

Meeting Point



September 2023

TRUE BLUE TAXIS (OLVESTON)

Local Taxi Company



Honest, Reliable and Safe

Cash or Card Payments



Mobile:

07967 042794

Top-to-Tail Housekeeping

- Professional
- Dependable
- Comprehensive service

Trading
Standards
Accredited

**Felina
Contract Cleaning**

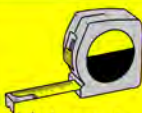
01454 201562
07790 050187
cleaning@felina.biz
www.felina.biz



Local Carpentry, Building & Plumbing

No Job Too Small

- Painting & Decorating
- Maintenance & Repairs
- Kitchen/Bathroom Fitting
- Static Home Repair & Refurbishments
- Handyman Service



For More Info Visit:

alvestonbuilders.co.uk

Over 40 Years
of Experience



Card Payments
Taken



Contact Mike

Tel: 01454 614887

Mobile: 07932 153300/07711 411075

Email: enquire@alvestonbuilders.co.uk

THORNBURY Chiropractic CLINIC

www.thornburychiropractic.co.uk

The Georgian House, 6 The Plain

Chiropractic

Johnatan Williams Msc DC

Carol Williams MSc DC

Acupuncture

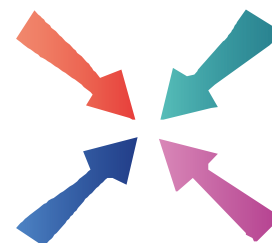
David Sanders Lic Ac. M.B. Ac.C

Massage

Josie Cole MTI

Open weekdays 8.30am-7pm

01454 418259



Meeting Point

Volume 47, Number 12, September 2023

The community magazine for the villages of Olveston,
Tockington, Old Down, Lower Hazel, Awkley, Ingst, Aust, Elberton and Littleton upon Severn

EDITOR:

Marelin Orr-Ewing
Courtlands
Olveston
Bristol BS35 4DU
Tel: 01454 610081
[meetingpointeditor@
gmail.com](mailto:meetingpointeditor@gmail.com)

ASSISTANT EDITOR:

Angela Williams
Ashlea
Haw Lane
Olveston
Bristol BS35 4EG
Tel 01454 612850
[meetingpointmagazine@
gmail.com](mailto:meetingpointmagazine@gmail.com)

ADVERTISING:

Bernard Amos
Tel: 01454 620388
[meetingpointadvertising@
gmail.com](mailto:meetingpointadvertising@gmail.com)

Publication date
1st of each month

Material for October 2023
to the Editor or Deputy Editor
by 4th September 2023

From the Editor

As it says above, Meeting Point is the community magazine for the villages that are listed, and we prioritise articles that cover information and events in this area. This month we have details of a Fayre in Tockington, a Fete in Aust, the St Mary's Summer Soirée in Oldbury-on-Severn and a village talent contest and a fundraiser for the Scouts in Olveston.

We also go wider than these villages, and for good reasons, as there is so much going on just a few miles away in Thornbury. This month we have got details of groups you can join for singing or painting or gardening. There is also information about the Thornbury Arts Festival, which is keeping going despite the closure of The Armstrong Hall.

I hope you enjoy reading our latest 'Volunteering' article, and that it inspires you to visit the Volunteer Fair that is being held in Thornbury on September 14th.

This month's cover photograph is by Angela Hague

Meeting Point Founded in 1976 by the Anglican and Methodist churches in Olveston, near Bristol.

Meeting Point magazine and Meeting Point Directory are online at the
Community Website: www.olvestonandaust.com

Thornbury Motors

- New and Used car sales
- Servicing, repairs and MOTs on all makes



thornburymotors.co.uk 01454 412535



Grovesend Road
Thornbury
Bristol
BS35 2EF



SAVAGE ASSOCIATES

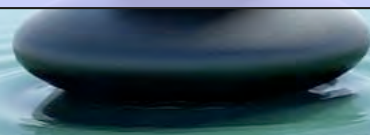
Accountants·Business Advisors
Corporate & Personal Tax Consultants

The Coach House, Aust Road
Olveston, Bristol BS35 4DE
Tel 01454 610388 Fax 01454 201541

for an initial consultation please contact:
edd.savage@savageassociates.co.uk

Vicarage Farm Holistic Therapy Centre

Bringing balance back
into your life.
Offering a wide range of
Holistic Treatments.



Hypnotherapy

A safe and effective treatment: to
remove stress, anxiety, depression
and phobias. Allowing positive and
powerful changes in your life.

Tel 01454 614390
www.vicaragefarm.org

Line of Coins

This year the 1st Olveston Scout Group 'Line of Coins' will be held on Saturday 30th September, starting at 10am outside the Crusty Loaf. We will be selling cakes and drinks at the Olveston Methodist Hall, whilst the young people from the Scout Group will be out on The Street laying coins from the Crusty Loaf to Olveston Stores. We would be very grateful if you could start saving your coins ready for the event and we would like to welcome you all along to donate coins (or maybe notes?) and join us for coffee and cakes. With prices rising everywhere, our annual fundraising event provides a vital boost to the funds and so please support your local Scout Group and help us to keep it thriving to support the children of our Parish.

As ever, the volunteer leaders and Board of Trustees have been working really hard to offer an exciting programme of activities for the sections, and to keep our facilities at the hut in good shape. I'd like to take the opportunity here to say a massive thank you to Olveston Parish Council for their recent support to help us put some improved lighting in the car park at the hut to improve safety and security. The support of the local community is vital to us and so we hope to see as many of you as possible on Saturday 30th September.



Scout Leaders Simon Richardson (left) and Simon Young (right)

D. YOUNG
GARDEN SERVICES
Fully Qualified with over 16 years Experience
Grass Cutting Hedge Cutting Turfing Fencing
General Landscaping

Tel: 01454 416206 Mob: 07545 131488
Email: d.younggardenservices@hotmail.com

MD Aerials 
Call Michael Dagger
T: 01454 418 341 M: 07817 304 236

Freeview – Freesat – Sky – DAB Aerials

 Wall mounting LCD & Plasma
televisions setting up & tuning

 mikemdaerials@gmail.com
www.mdaerials.co.uk

T. EDWARDS PLANT
Digger and Driver Hire

- Site/garden clearance
- Footings
- Drainage/soakaways
- Driveway preparation
- Stump removal
- Fencing & turfing
- Narrow access equipment



Price or day work t: 07900 372349
t.edwardsplant@gmail.com
CPCS/CITB qualified & insured

Guitar & Piano Lessons

Local lessons for children & adults
beginners to advanced

Contact Max & Andy
max@crotchetfactory.co.uk 07859 912 438

Ukulele, Keyboard & Recorder lessons also available

 **S.J FARR**

KITCHEN FITTING
SERVICES

Mobile: 07915673649

Our Associated Services Include:

- Plumbing
- Wall & Floor Tiling
- Decorating
- Plastering

City & Guilds Qualified

WERN New Village Agent in Severn Vale

WEST OF ENGLAND RURAL NETWORK



Hi, I'm Elizabeth Woodland, the newly appointed Village Agent in Severn Vale - covering the parishes of Aust, Oldbury on Severn, Olveston, Rockhampton and Hill.

This is a new project linking people in rural areas with advice and support for independent living, health and wellbeing:

- Free confidential service
- One to one support
- Signposting to appropriate professionals
- For anyone over 18 years old

More information on the project can be found here:
www.wern.org.uk/village-agents or please contact me on 07880 344460
or elizabeth@wern.org.uk

Olveston and Tockington WI

After a quiet August, with just a pub lunch on the agenda, WI is starting the new school year with some exciting events.

At the September meeting our very talented WI member, Sue, will be inspiring us by sharing her love and experience of textile art. We have a new book group starting and both the stitching and walking groups will be restarting.

A group of us is off to Rangeworthy, to watch a local production of The Calendar Girls.

WI is more than just 'Jam and Jerusalem'! Please contact Angela Green on 01454 615222 if you would like to know more about Olveston and Tockington WI.

Wanted - Hand Bell Ringers

St Mary's Church has a very fine set of hand bells. Currently we do not have enough ringers. We would like to recruit more members to utilise the bells we have and make an even more joyous sound. It is not difficult, and you don't need to read music. We practise on Saturday mornings. If you are interested, please contact Jean Fooks on 619461 or Angela Williams on 612850.

Phoenix Flooring Limited

DISABLED ACCESS

Finance Available
Buy now, pay monthly
Provided by **iDeal Finance**

RESIDENTIAL & COMMERCIAL FLOORING SPECIALISTS

Carpets • Luxury Vinyl Tiles • Laminates
Engineered Wood • Room Size Remnants
Vinyls • Artificial Grass

CASH & CARRY

OPEN TO THE PUBLIC AND TRADE

Tel: 01454 620707
email: enquiries@phoenixflooringltd.co.uk
www.phoenixflooringltd.co.uk

LGBTQ FRIENDLY
Love is love

Unit 15 Hemingway Business Centre
Walker Way, Thornbury, Bristol, BS35 3US

Brigadoon

'Brigadoon' is The Parish Players' exciting new musical production, which will take place at Olveston Parish Hall in February 2024. Now is the time to get involved if you want to join in the fun – on stage, behind the scenes, or both.

This truly romantic Scottish tale sees two American tourists, Tommy and Jeff, lost on a Highland moor in 1940s Scotland. They are confused to find a bustling village where nothing is marked on the map. It becomes clear that they have stumbled upon the long-lost and enchanted 'Brigadoon', which is only visible to outsiders on one day every 100 years. Visitors can stay, but only if they find true love and are willing to give up the world beyond.

The audience can be sure to be carried along by this captivating story that combines romance, comedy and tragedy. Once again, we can rely on the touch of experienced local director Linda Evans and musical director Chloe Allsopp-Jones to provide a fantastic evening of escapism against a delightful and uplifting musical backdrop.



Image: Birmingham Museums Trust on Unsplash

The musical, with script and lyrics by Alan Jay Lerner and music by Fredrick Loewe, first appeared on Broadway in 1947. Numerous other famous productions have since followed, including the well-known film in 1954 and a television version in the 1960s.

Amongst the many engaging musical numbers, 'Almost Like Being in Love' is the best remembered.

Being part of The Parish Players is a great opportunity for people of all ages to take part in a creative journey while having a lot of fun at the same time. Back stage skills and front of house, looking after our wonderful audience, are just as important as being on stage, and you will meet lots of new friends along the way.

2 Men Went To Mow

All Aspects of Garden Maintenance, Plants & Shrubs Supplied, Garden Rubbish Removal, Fully Insured

Garden and Tree Service Tel: 07956 311901
Local, Friendly and Reliable Email kev@2menwenttomow.co.uk

Tree Surgery (NPTC Qualified)
All Types of Tree Work Undertaken
Contract Grass Cutting
Beds & Borders Maintained
Pruning and Hedge Cutting
Planting

FREE ESTIMATES!

L. & J. Gulwell
Family Funeral Directors

1 Quaker Lane,
Thornbury
BS35 2AD

Local independent family funeral directors
for over 50 years

Specialists in bespoke funeral services, burials,
cremations & pre-paid funeral plans

Call 24hrs 01454 418 779 • www.funerals.uk.net

COMPANION AND DRIVING SERVICE

Driving Miss Daisy
We're There For You

Now taking bookings in your area!

- For people of all ages unable to drive but wish to remain independent
- Supported trips to the doctor, hospital, shops, bank, hairdresser, vet, etc.
- Social outings, holidays, help at home and much, much more
- DBS checked and First-Aid trained
- Dementia friendly
- Wheelchair Accessible Vehicle
- Fully Licensed

To book your Daisy
07951 079 558 / 0333 014 6211
northbristol@drivingmissdaisy.co.uk
www.drivingmissdaisy.co.uk

Top quality Nursing and Residential Care

Beech House

Beech House Care Home provides excellence in all aspects of care for all our residents, offering the best in nursing care for the elderly and residential care for people with a diagnosis of dementia.

Our unique care service includes:

- beautiful gardens
- purpose built homes with 24/7 air circulation
- spacious rooms and wide corridors
- top quality chefs
- television with DVD and telephone in each room
- wheelchair provision at no additional cost
- high technology baths and walk-in showers
- regular minibus trips
- programme of interesting and stimulating activities

RECENTLY RATED Outstanding by Care Quality Commission

To arrange a visit, telephone **01454 412266**
For more information see www.bristolcarehomes.co.uk

Bristol Care Homes
providing a unique care service

If you'd like to take part in this year's show, come along to Olveston Parish Hall (Upper Tockington Road, BS32 4LQ) on Monday 2nd October at 7.30pm. Alternatively, please email us with offers of backstage help.

Rehearsals and auditions will then continue every Monday and Thursday evening (other than October half term and the Christmas holidays) until show week in February half term. Performances will be at 7.30pm on Wednesday 14th to Saturday 17th February 2023 inclusive (write the dates in your diary now). Tickets will go on sale in January.

You can contact us via secretaryparishplayers@gmail.com or, alternatively, keep an eye on our Facebook page at www.facebook.com/OlvestonParishPlayers.

Final Call for Calendar Girls

Rangeworthy Village Hall from 21st to 23rd September.

Performances each night at 7.30pm and a matinée on Saturday at 2.30pm. The play is suitable for those over 16 years. Adult tickets £12 and Concessions £10 are bookable online via: www.ticketsource.co.uk/collaborative-productions or by TicketSource box office 0333 666 3366 for which there is a £2 telephone booking fee (which includes postage of tickets) on top of the usual 7% booking fee. Group bookings of 10+ get one ticket free. Tickets are also available in person with cash at the Rose & Crown in Rangeworthy.

Performances are in aid of BUST, which supports the Breast Care Centre at Southmead Hospital and Blood Cancer UK.

Don't Forget - Aust Fete



Saturday 2nd September
The Boar's Head,
Aust.
There will be lots going on.....

Alveston Gardens Association

4th September: From Oasis to Sandy Point, with Pam Turner.
2nd October: Pot Plants in the House, with Nick Morgan.
Meetings are in the Jubilee Hall, Alveston, at 7.30pm.

Learn with Bern

Knitting & Crochet Classes



Individual & Small Group Tuition

Over Lane, Almondsbury

Tel 07359515347

hunkaboo.learn@gmail.com

GRANGE CARPETS



- CARPETS
- VINYL
- LAMINATE FLOORS
- RUGS
- CURTAINS
- BLINDS

Serving the local community since 1984, Grange Carpets are your first choice for flooring, rugs, curtains, and blinds. We supply most leading brands of carpet and vinyl as well as ILIV curtains and the Think Rugs range. Our carpet prices include standard fitting, with a free home measurement and consultation service.

Grange Carpets is a member of the Associated Carpet Group.

GRANGE CARPETS
28 ST MARY STREET
THORNBURY
BRISTOL BS35 2AT

01454 419805

First Friday Community Cafés at Tockington Chapel

The Community Café at Tockington Chapel is organised by members of the community, for the community. We would value other people (or groups) offering to run the Café on some of the 'First Fridays' during the year. Forthcoming dates are Friday 6th October, Friday 3rd November and Friday 1st December. Running the Café involves opening up the Chapel at 9am, making teas and coffees, serving cake and chatting to our many friendly visitors and closing up just after 11.30.

If you (maybe with a group of friends) would be happy to help run the Café on an occasional basis, please get in touch on TOCS.friends@gmail.com. We also welcome donations of cakes!

The Café has proved very successful since it started in February. We donate the proceeds to the Methodist Church in exchange for free use of their building, which is a valuable hub for the Tockington community and currently needs the community's support.

The next Community Café events will be held on 1st September and 6th October, 9.00-11.30am. We look forward to seeing you there! Tea, coffee, squash and delicious cake will be available, cash payments only please.

(The Methodist Church has asked us to mention here that they will not be holding their usual Saturday coffee morning at Olveston Methodist Hall on 23rd September, because of the Harvest Fayre on the same day.)



Nigel
Vili

www.manwithavan.info
Removals ✓ Clearances ✓ Deliveries ✓
Scrap cars ✓ We're local ✓
Call: 07742791139

Cheaper than a skip!

PLAN-IT STONE
MARBLE • GRANITE • QUARTZ

Quartz Worktops

Worktop Manufacture – Templating & Installation
www.planitstone.co.uk



0% Finance available

Email: sales@planitstone.co.uk

Trade and Public Welcome

Call: 0117 329 1718

Wider range of materials, at a better price than B&Q, Wren, Howdens. Deal Direct with your local Worktop manufacture

 **PawsPetCare**
...simply for the love of animals

Providing care for your pets
when you need it

Contact Helen for a friendly and reliable service
07493 153520 or enquiries@pawspetcare.com
www.pawspetcare.com

Frontline Martial Arts

Traditional Martial Arts / Taekwondo

Mighty Mites (under 10's): Fridays 4.30-5.15pm at
Juniors (ages 10-13): Mondays 7.15-8.15pm
Adults/over 13's: Mondays 8.15-9.45pm
at Alveston Youth Centre



Tel: 07771 692222
www.frontline-ma.co.uk

THE WHITE HART INN Olveston



Traditional 17th Century English Pub

Catering for Parties and Functions
Wide variety of cask & keg beers
Skittle alley & pool table available
Book now for Skittle Matches
Award winning courtyard garden

Telephone: 01454 612175

SEVERN SIDE TAXIS

SIX SEAT COMFORT
AIR CONDITIONED CAR

AIRPORTS
BUS STATIONS



HOSPITALS
EVENINGS OUT

RING STEVE WARD
07879 601011

FRANCIS DESIGN & BUILD Carpentry & Building Services

For all aspects of carpentry

Doors, Skirting, Kitchens, Fencing,
Decking, Stairs, Timber frame etc.

Call Craig on 07970 514409
(or, if busy)

email: craigyoung0308@live.co.uk

Friends of St. Mary's

The prize winners in the August draw, held on 3rd August 2023 were:

Amount	Number	Name
£150	484	Mrs R Arkell, Olveston
£75	542	Mr N Fear, Tockington
£50	337	Mr D Baker, Olveston
£25	228	Miss J Davies, Olveston
£25	402	Mrs N Slaytor, Tockington
£20	299	Mrs J Dickens, Aust
£20	439	Mr D Skinner, Sneyd Park
£20	164	Mrs P Kemp, Stoke Lodge
£20	540	Mrs S Chick, Olveston
£20	175	Mr B Morgan, Tockington

If you are not yet a member and wish to join the lottery, please telephone
Andy Phillips on 01454 614890 or email andisp28@hotmail.co.uk.

Don't forget, if you're not in – you can't win!



Thornbury Stroke Support Group.

A Volunteer

Years ago, I would occasionally bump into a friend who lived in Orchard Rise. He'd always ask if I was interested in volunteering at the Stroke Group and I'd always say, 'I'll think about it' until one day I found myself saying 'Yes, OK', and I'm glad I did.

This friendly, thriving, group exists to encourage all stroke survivors with their rehabilitation by providing regular weekly social activities, alternating between entertainment with afternoon tea and cake and painting and craft afternoons.

Every week in Thornbury pool there is swimming or just enjoying the buoyancy of the water whilst chatting with others, then more chatting in

Severnside Heating & Plumbing



- Installations
- Servicing
- Repairs

Working locally since 2003. An experienced heating and plumbing engineer. For a no obligation quote please call Mike
Mob: 07554 825813 Tel: 01454 613780



LA Electrical Services YOUR LOCAL ELECTRICIANS

New Builds, Rewires, Consumer Units, EV Charge Points, Landlord Reports (EICR), Testing & Inspection, Sockets, Lighting, CCTV, Security, Solar and Battery Storage & much more

f t i /laelectrical
01454 633 336
LAELECTRICAL.COM

Dave Webb

Painter - Decorator

07809 869149

01454 201640

*Reliable, professional, friendly service.
Please ask for your free quotation*



Early Years Group Music Classes for ages 0-3 years

- Severn Beach, Littleton on Severn
- All welcome from £3 a session
- Piano teaching for children age 4+



Janet Harrison
Suzuki Piano Teacher
Janet_harrison@outlook.com
T: 07562 212435



Squire Sweep

A chimney sweep service from
Michael Squire

Tel: 07504 253 467

Email: squiresweep@gmail.com

Visit: www.squiresweep.co.uk

the cafe. There are fortnightly indoor bowls sessions from September to March also in the leisure centre.

We meet on Thursday afternoons in the Jubilee Hall in Alveston during the winter months and, in the summer, we arrange trips out by coach or car and there's a summer holiday too.

The group currently has about 40 stroke survivors, some are wheelchair users, and a similar number of volunteers who support the activities including providing lifts and who derive great pleasure from the companionship. Some volunteers are involved in several activities and others just help with one.

For further information please telephone Jill Davis, the Chairman, on 01454 613961 or email tdstrokegroup@gmail.com or visit: <https://thornburystrokegroup.wordpress.com>

Come and Sing - Vivaldi Gloria and Schubert Mass in G

On Sunday October 1st, St Helen's Church, Alveston, is holding a Come and Sing day in aid of the organ fund. The day will start at 1pm with a choir only rehearsal with a short break for a late lunch (please bring your own). The orchestra will join the rehearsal during the day. There will be a performance at 7pm.

If you would like to take part, please email revsrural@gmail.com including the following information: In the subject line *Vivaldi* and in the message, your name and your voice. Please add the words *Vocal Score* to the message if you need one. For example – David Moss, Tenor, Vocal Score.

If there is space, you will get an email with the BACs details for payment of £10 to confirm your place.

Soloists: If you would like to be considered for a solo, please email chris@cheesetoasties.com



For Detailed Aerial Photos of Homes,
Rooftop Inspections & Orthomosaics
call Neil on 07986 162088



motion
motiondesignsprint

Do you know we print the Meeting Point Magazine?

We also print for lots of local clubs, events and businesses.

Based in Severn Beach we offer convenient off-road parking right outside our door!

We print everything from Wedding Stationery to Business Stationery

Our professional design and modern printing techniques have saved time and money for lots of people.

Fast, efficient and professional.

Why not let us print for you?

01454 631289
info@motionprinting.co.uk
www.motionprinting.co.uk

ALMONDSBURY PHYSIOTHERAPY AND SPORTS INJURY CLINIC

Louise Brinson
Chartered Physiotherapist, hpc reg

Almondsbury Surgery, Sundays Hill
Almondsbury, BS32 4DS

Tel: 07786915442
Fax: 014540615745
E-mail: physiolouise@hotmail.co.uk

Also at Aztec Spa Leisure Club

ACE1
Window & Gutter Cleaning

Window Cleaning
Gutter Cleaning & Repair
Fascia & Soffit Cleaning
Conservatory Roof
Solar Panel Cleaning
Power Washing

M: 07590 201264
T: 01454 436162

 Gleaming Insurance

Olveston and Tockington A great venue for :

Parish Hall
07780 515317

- Fitness
- Parties
- Public events
- Music & Dance

Check availability & book online at www.olvostonparishhall.co.uk

"Our newly decorated Hall"





News from St. Mary's

In November 2021 St Mary's achieved an Eco Church Bronze Award. The vision for 2023 is to achieve next level of Eco Church Award, the Silver Award. To achieve the Silver Award, we have to show a deeper commitment to actions that are both caring of others and of the whole of

God's creation. A questionnaire is being prepared which will build a picture of where we are as a church and to encourage us in working for the Silver Award. Please respond when the questionnaire is available.

Summer Soirée

Saturday September 16th 6-9pm
Cherry Trees Oldbury on Severn
Come along before the nights close in, to our Summer Soirée in the marquee, which includes a two-course meal with entertainment.
Proceeds to the organ renovation.
Tickets £15 contact Steph Fairhead 01454 413990

Harvest Festival

Sunday September 17th 11am
Followed by wine and cheese.

Village Talent Concert

Saturday September 30th 7.30pm
Enjoy an evening of music, poetry and comedy by members of the village!
A paying bar will be available. Proceeds to the organ renovation.
Tickets £5 on the door

From the Registers of St. Mary's

Sunday July 16th Baptism of Hallie May Grundy
Baptism of Riley Jacob Lewis

Thursday July 27th Funeral of Hilda Mary Bailey

Bristol Carriage Masters

- Religious or non-religious funerals
- Bespoke funerals for burial or cremation
- Fully guaranteed pre-paid funeral plans
- Direct cremations



177 Crow Lane, Henbury, Bristol, BS10 7DR
Telephone: 0117 950 8066
Website: www.bcm-funerals.co.uk
Email: admin@bcm-funerals.co.uk

Windmillcare Homes

— great places to Live



Windmill House

The original, elegant home in a delightful rural setting with 2 acres of beautiful gardens delivering unrivalled care

01454 413818



OSBOURNE COURT

Our brand new purpose-built home providing exceptional specialist dementia care in the heart of the village of Stoke Gifford

0117 944 8700

**Residential, Short-term Respite
and Day Care available**

enquiries@windmillcare.com

or www.windmillcare.com

TOCKINGTON OSTEOPATHY

HELPING YOU BACK TO HEALTH

Effective Treatment of:

- Back and Neck Pain
- Arthritic and Rheumatoid Pain
- Joint Pain and Injuries
- Sciatica and Trapped Nerves
- Tendonitis and Muscle Injuries
- Tension Headaches

Please call on **07870 219249** or visit our website www.tockingtonosteopathy.co.uk to make an appointment or discuss how we can help.

Run by Natalie Gladstone - over 20 years' experience.

Easy parking on site - all major health insurances covered.

Old Down Hill, Tockington, BS32 4PA.

Old Down Cricket Club

Tony Gardner

150 Club Winners August 2023:

£50 Andrew Kitchen
£15 Bill Finch
£5 Neil Cross

Latest £25 Bonus Ball Winners:

15/07/23 Neil Cross
22/07/23 Paddy Gardner
29/07/23 James Green
05/08/23 Paddy Gardner

August/September Fixtures at The Park:

26/08/23 1st XI v Frampton Cotterell CC
02/09/23 2nd XI v Golden Hill CC

1.00pm Start, All spectators welcome.

ODCC Race Night and Auction

Roger Riggs

I would like to thank everybody who purchased tickets and attended the evening on June 23rd, or donated prizes, to help raise funds for the new roller and also help the wonderful local charity, St Peter's Hospice. It was good to hear from St Peter's Hospice and all the good work they do in the area.

It was a great evening, with lots of fun, and the 'Race Night' was superbly hosted by the great John Pullin. What a brilliant auctioneer he is. At the end of the evening we were able to present a cheque to St Peter's Hospice for £1500 and over £7000 to ODCC, towards the cost of the roller

Special thanks must go to our hard-working local councillors, Mathew Riddle and Tony Williams, for their support on the night with the draw. Did you forget to pull my ticket out gents? Also, local businesses for their great help - Circuit Hospitality, King Lifting, Sullivans Garden Machinery, Arron Banks, Fox Inn, Anchor Oldbury and many more. Massive thanks to you all. Thank you also to Rob Birtles, who worked so hard from day one, with printing and laminating posters, and for his time on the night.



Tel: 01454 885766
Mob: 07724 166917

Ridge Roofing and Property Maintenance

Roofing ❖ Chimney Repairs ❖ Lead Work
Guttering ❖ External Painting
General Maintenance ❖ **FREE Estimates**



D-CR DOMESTIC APPLIANCES

Tel: 01454 850522 - Mobile: 07917441539
Email: d-cr@live.co.uk - Web: www.d-crdomesticappliances.co.uk

DOMESTIC APPLIANCE REPAIR SPECIALIST

- WASHING MACHINE
- TUMBLE DRYER
- DISHWASHER
- FRIDGE FREEZER
- COOKER
- HOB OR HOOD

Fast, friendly and efficient service
Sales - Service - Repair



EARTHWORKSUK

We offer a range of recycled and quarried products including 6F5, type 1, topsoil and decorative stone. These can be delivered straight to you on site or collected from us at our yard in Cromhall. Check out all we can offer you on our website or contact us using the details below.



Skip Hire



Top Soil



Recycled Aggregates



Grab Lorry Hire



Tipper Hire

info@earthworksuk.co.uk www.earthworksuk.co.uk
Orders Line: 07782472727
Bristol: 01179 828265 - South Glos: 01454 501037




Lending with Heart and Mind

South Gloucestershire Council fund a not-for-profit loan scheme for homeowners and landlords*.

We understand the expense of maintaining your home and we work with you to take the stress out of funding repairs, improvements or adaptations.

We see you as an individual, not a credit score. Our knowledgeable team of advisers will guide you through the process of applying for a home improvement loan.

For a no-obligation assessment or more information visit www.lendology.org.uk or call 01823 461099

Heatherton Park Studios, Bradford on Tone, Taunton, TA4 1EU

*subject to eligibility

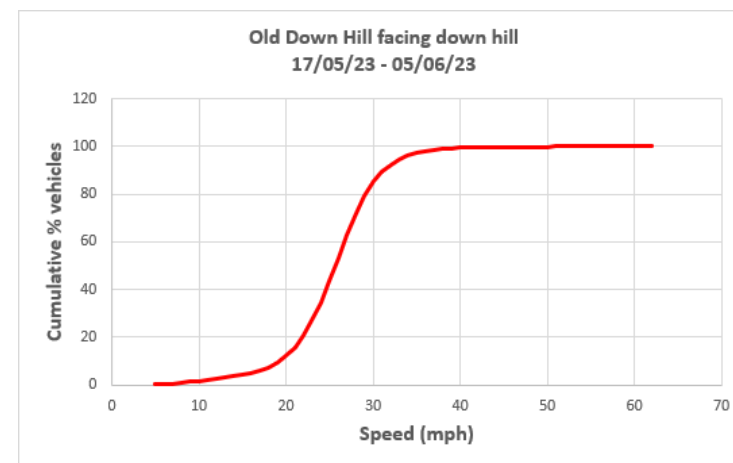


Olveston Parish Council

Pat Savage

Speed Watch and VAS

Councillor Miles Grocott along with Councillor Tony Turnbull organise the positioning of the VAS throughout the Parish. Miles recently attended an Avon & Somerset Police Community Speedwatch meeting. Progress is being made with a view to having available a much more sophisticated system of running Speedwatch. It is still very much in its early stages of development but could be a game changer! See below the latest VAS data.



LINELA

embroid | print | promote

One place for everything promotional.
Specialising in embroidery,
printing and branded gifts



T Shirt Printing
Sports wear
Work wear
School wear
Promotional Products

Call us: 01454 615300

Email us: sales@linela.co.uk

www.linela.co.uk



Livewire Electricals
Electrical & Mechanical Solutions



Domestic, Commercial
and Industrial Installations

All electrics for new build, extensions and
alterations to satisfy mandatory Building
Regulations. Landlords safety inspections
Portable Appliance Testing (PAT)

Electrical and electronic service and repair
For 24 hour call-out service available please
call Peter Jones: Tel: 07880 858785

Email: pete.livewire@blueyonder.co.uk

Local number Tel: 01454 613482

Visit our web site at
livewire-electrics.co.uk

BonneFreshClean
Carpet & Upholstery Cleaning Specialists

Love the look and smell of
clean and fresh carpets and
upholstery?

Bonne Fresh Clean brings to
you a professional carpet and
upholstery service that will
leave them sparkling and fresh.

Call for a free
no obligation
quote today!

- Thorough, gentle deep cleaning, no residues
- Child and pet friendly treatments
- Latest industry approved qualification and full insurance



Bonne Fresh - Relax and enjoy beautifully clean
and fresh carpets and upholstery!

T: 01454 436001 M: 07774 908410

W: www.bonnefreshclean.co.uk

44 Townsend Lane, Almondsbury, Bristol, BS32 4EQ

Cookin' On Gas Ltd



Repairs & Sales of all
domestic appliances:

GAS
safe
REGISTER
211879

Gas & Electric Cookers and Hobs
Washing Machines, Dishwashers
Tumble Dryers

www.cookinongasltd.co.uk

enquiries@cookinongasltd.co.uk

Matt Cole
1 Olive Gardens Tel 01454 851545
Alveston Mob 07715 705670

622 Bus Service

South Glos. Council has managed to partially save the above bus service. It will now run from Severn Beach to Thornbury during school times both in the morning and the afternoon. It can still be used by the public. The 84 and 85 service to Winterbourne has also been temporarily saved. A final decision will be made by the West of England Combined Authority in April/May 2024.

New Councillors

The Council is very pleased to announce the appointment of two new Councillors - Steve Richie and Amanda Symons - who both live in Tockington. Amanda is a school registrar and Steve is a retired town planner. No doubt you will join us in welcoming them to the Council. We are pleased to report that we have returned to our full quota of nine.

The Wizard of Oz Review



Marlwood School's production of The Wizard of Oz really sent the audience to 'Somewhere Over the Rainbow' and brought them safely back again with great success. Kansas was replaced through a spectacular cyclone scene to arrive in the magical land of Oz with great ingenuity and theatrical stagecraft.

Beauty at the Barn

4, Grey Gables, Vicarage Lane, Olveston
For appointments telephone Nicola on
01454 201717



Jessica Manicures
GELeration Nails
Shellac Nails
Jessica Pedicures
Spray Tanning
Waxing
Ear Piercing
Eyelash Perming
Eyebrow Shaping
Eyelash tinting
And more....
Evening appointments available
Gift vouchers available



Olveston & Tockington Tennis Club

Introducing a brand new coaching
programme with TH Tennis.
Offering 5 days/week coaching
from kids to adults

Clubspark.lta.org.uk/THTennis

www.ottctennis.co.uk

Now's the time to get back
on court.

The Marlwood pupil cast and crew under the masterful directorship of Mrs Ferguson (supported by other gifted members of staff), created a wonderful show which reminded us of what is the most important – family and love!

We empathised as Dorothy, excellently portrayed by Eleanor, was desperately trying to forewarn Auntie Em and Uncle Henry that Miss Gulch wanted to take her precious Toto away. The sentiment continued as she found herself in Oz, confronted by the Wicked Witch of the West, and her dilemma of how she was going to manage to get home again. Luckily, she had an elegant and glamorous Glinda, Caitlin, to point her to the Yellow Brick Road, as well ensuring those red slippers passed on to their rightful new owner. The creatively didn't stop there as Dorothy with her new, real, faithful Toto (Sukhi) came across her fellow companions; Scarecrow (Aoibhinn), Tin Man (Josh) and The Lion (Nathanael), each encounter set differently but conjoined by the familiar yellow brick road (made out of Lego!).



Along the way there were some great comedy moments – Dorothy's encounter with Professor Marvel and the Wizards of Oz's unveiling spring to mind, which showed great maturity and comedic timing by Izan and James. I can't leave out the wonderfully strong villainous performance by the Wicked Witch of the West, played by Molly, who delivered her lines malevolently.

All supporting performances were strong; in Kansas Daisy playing Auntie Emm alongside Sam as Uncle Henry, in Oz the Mayor (Sid), Coroner (Lily), Barrister (Emily). The fantastic supporting ensemble which made up the Lullaby League, Lollipop guild, Apple Trees, Emerald city



MYNEAT TECHNICAL SUPPORT FOR YOU - AT HOME

I'm Jed, the Tech Guy - I have a world of technical knowledge and the patience of a saint!
No matter how big or small your issue, I can solve it either in person, over the phone or on line.

LAPTOPS, COMPUTERS, PRINTERS, MOBILE PHONES, TV's, XBOX, JUST ABOUT ANYTHING REALLY

And best of all – I can come to you! Silver Surfers and technophobes - I'm your man.

I know your requirements are unique and because I work independently for you,
I can deliver the most affordable solutions to your doorstep.

I also support local customers with personal shopping. If you need a trip to Curry's PC World, John Lewis, Apple or the store of your choice I can advise you on the best deal to match your tech requirements.

So what are you waiting for, call me and your tech issues will be resolved in no-time!

Email: help@myneat.co.uk Tel: 01454 406000 Web: myneat.co.uk

PREMIER HOMECARE Delivering Outstanding Live-In Care

A COVID-safe and affordable alternative to nursing home care.

Our fully managed, affordable 24 hour Live-In Care service allows you or your loved one to continue living in the safe, familiarity and comfort of the family home.

Our staff are hand picked specifically to match the personal needs and requirements of each individual client; guaranteeing you a bespoke and tailored service.

24 hour Care at Home - carers carry out all required duties following a personalised care-plan. They can manage medication, personal care, domestic duties as well as shopping and meal preparation plus trips out where required.

0117 456 2490
www.premier-homecare.co.uk

homecare.co.uk
Homecare.co.uk Review Score for Premier Homecare

Offices at:
24 Canford Lane
Westbury-on-Trym
BS9 3DH

67 Stoke Hill,
Stoke Bishop
BS9 1EP

Inspected and rated **Outstanding** by CQC

"We are delighted with the Live-In care that our mother receives in her home. The carers are patient, kind and very well-trained. We trust them completely with our mother's care."
ML, November 2020

el cuisine

Catering for any occasion
Private parties, Birthday and Anniversary Celebrations,
Weddings, Funerals, Corporate Events,
Formal Dinners, Shoot Lunches... whatever the occasion

www.el-cuisine.co.uk Please contact Emma 07931952939 info@el-cuisine.co.uk

Friday 29 September
OPEN DAY
Reception - Year 8

Join us to discover just what makes our school so special!

By appointment only from 9.30am



Tockington Manor School

Scan the QR code / Visit www.tockingtonmanorschool.com / Call 01454 613229



residents were brilliant too. Choreography was provided by two students and all the dancers did very well, particularly in the jitterbug dance.

The number of staff who also joined the production is very large and a reflection of the strong school community. Mr Stewart's musical direction, not only in person as leader of the Emerald City Brass Band, also ensured the Cyclone Percussion and Samba Band enhanced the production. Mrs Barnes supported vocal work so that all the singers gave assured performances which enable them to shine in their singing. English teacher Mr Blunt was assistant director, and a skilled follow spot operator.

The set was amazing, each tableaux told its own story. The creativity and inventiveness as the farmhouse was blown away in the wind and rebuilt was ingenious, let alone the horse, sheep and other props which got caught up in the whirlwind. The colourful giant lollipops, the rainbow, the vicious crows awaiting to peck at Scarecrow's straw, the knitted apples, the castle were all ingeniously created as well as some of the visual effects. Designed by the art department's Miss Birkin and brought to life by her dedicated team of students during many lunchtimes.

Mrs Bagnall's (Marlwood Theatrical Services) costumes were great, and she and her team made sure that each role was suitably dressed to able to portray their respective roles, be it the wobbly Scarecrow, a rather awkward Tin Man or even Nikko's wings (the Wicked Witch's main hench man).

Of course, not only was there an ensemble of able performers on stage but there was also a very slick pupil backstage crew who were enhanced by the excellent sound and lighting team. Mrs Ferguson enables so many young people to join in and be a part of this summer production journey. Her 'can do' attitude means she always says 'yes' to a last-minute request as well as encouraging those school clubs to take part. Throughout the academic year her talent spotting eagle eyes ensure pupils are nurtured and create some magic moments in her production.

On Friday evening it was an emotional moment as the cast gathered for their final curtain call. Let us not forget that these young people did this production whilst juggling end of year exams, normal school classes and other external commitments. They should be so proud of themselves, no matter what part they played, because they all came together as a whole and made memories for themselves as well as their audience.

The amazing talent in Marlwood school meant that the audience left with smiles on their faces, eager to come back next year. I wonder what production Marlwood will choose to do next? Whatever it is, I can't recommend it highly enough. Go along and see it.






We are hiring

Join our Team at Beech House in Thornbury



Contact us
0117 992 7012

keeping your garden beautiful...

ask us about LAZYLAWN

- LazyLawn - superior artificial grass supply and installation - licensee for Bristol & South Wales
- landscape design and build with 25 years experience
- tree surgery
- garden makeovers
- regular garden maintenance

Garretts Gardens and Landscapes

for Garretts Gardens or Landscapes
t 01454 614111 m 07974 109919
info@garrettslandscapes.co.uk
www.garrettsgardens.co.uk



The agent
for all seasons

Come rain or shine,
lisa costa estate
agents have the
experience and
knowledge to take
you smoothly through
the moving process.



lisa costa

RESIDENTIAL SALES & LETTINGS

53 High Street | Thornbury | BS35 2AR
01454 279734 | sales@lisacosta.co.uk | lisacosta.co.uk

Please note: If your property is currently on the market, the terms and conditions of your Existing agency agreement must be considered before instructing ourselves.

Classic Car Meet-Up

St. Helen's, Alveston



If you have a classic car, come and join us on September 9th 10am to 12noon. Bring your car, and park it up in the graveyard. Tea and bacon sarnies will be served in the church. Spectators welcome. Look forward to seeing you.

Green Force



Would it be preferable to be caught in a flood or a wildfire? There's no choice - we would just strive to survive. But those extremes are with us now in all parts of the world. The average global temperature this year is 17.18 C, and in 2016 it was 16.92 C. Last month the head of the United Nations said, "global warming has now become global boiling". Sea levels are rising each year too because the ice caps are melting, and it is forecast that the global sea level might have risen by 24 inches by 2100.

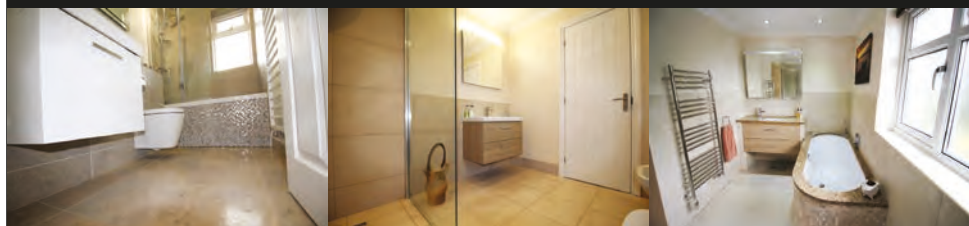
What does Net Zero mean? Net Zero means not adding to, and reducing by 1.5% to zero, the level of the global temperature, which at present is still rising because so little action has been taken by governments.

Greenhouse gases include carbon dioxide (CO₂) and methane (CH₄). CO₂ is released when oil, gas and coal (fossil fuels) are burned. CH₄ is produced through farming and from landfill, which is essentially our unrecyclable household rubbish. These gases cause global warming by trapping the sun's energy. Not all emissions can be reduced to zero, so those that remain need to be compensated for by removing greenhouse gases from the atmosphere. This is known as offsetting. Natural offsetting methods include planting trees and restoring peatlands, eating less red meat and utilising more renewable energy resources such as solar and wind power.

Paul Whittaker

BATHROOMS & WETROOMS

DESIGN . SUPPLY . INSTALLATION



Tel: 07879 666221 . Website: www.paulwhittakerbathrooms.co.uk



Village Care

Our local Care and Support staff can assist with all your Homecare requirements, from cleaning and domestic duties to personal care, we can tailor our service to meet your needs.

Please contact us for a free no obligation assessment.

T: 01454 415861 E: info@village-care.co.uk

63 High Street Thornbury www.village-care.co.uk

What will Net Zero mean for individuals? Individuals will have to adjust their lifestyle and make improvements to help meet the target.

Have you thought of.....starting literally at home and checking your house has good insulation especially roof and windows? Light bulbs can be changed to LEDs which use less energy. However small the changes, in the long run your energy bills will be lower, and your house will be warmer. Also any small changes made individually add to the nation's 2050 target of 0%.

Please note that there is a Recycling Week 19th – 25th September, when we can all make sure to recycle as much as possible.

Tockington Harvest Fayre

A reminder that Tockington Harvest Fayre will be on Saturday 23rd September from 2.00pm – 4.30pm on Tockington Green. We will be serving delicious cream teas and cakes all afternoon and will have lots of stalls including toys, garden produce, plants, books and 'As New' items. Music and dancing displays will keep you entertained, as well as tombolas, skill games and a raffle.

Offers of help in preparing, running stalls and clearing up are always really appreciated, so if you can spare some time - please contact Maggie on 01454 610053 or Jane Sawyer, email jane@prologue.co.uk.

The afternoon begins with the crowning of the Harvest Queen and then the children's 'Lovely Bug Ball' fancy dress competition will be judged. The other children's competitions are:

- 1) Design a sign/ poster for a wildlife friendly garden, with the words 'Bee Friendly' (A4 landscape)
- 2) Make a 3D model of a bee or hedgehog using any medium (junk, clay, cake!)

Competition entries can be brought along on the morning of the 23rd and must be labelled with the child's name, age and contact details.

We would be grateful for any donations of 'As New' items/unwanted presents, good quality books, toys, toiletries, bottles for the tombola, plants and vegetables. Please leave items in the box placed in Olveston Methodist Church porch, alternatively contact Maggie or Jane as above, we can always collect if needed. All proceeds from the Fayre will go towards Olveston and Tockington Methodist Church and the upkeep of their buildings.

** Please note there will be no Saturday Morning Coffee at Olveston Methodist Hall on the 23rd September.*



Legal advice that brings balance to life

Award winning legal advice to help you navigate change and plan for the future.

gl LAW

Let's talk about you or your business www.gl.law 0117 906 9400

BUSINESS SERVICES · PROPERTY · DISPUTES · FAMILY LAW · WILLS & PROBATE

- All makes servicing and repairs
- Petrol and Diesel MOT Testing
- Tyres, Exhausts and Batteries
- Air Conditioning
- Latest Bosch On-Board Diagnostics
- Vehicle Sales



GREEN LANE GARAGE
OLVESTON

New Road, Olveston, BS35 4DX
01454 202030






Hanham Health
health matters...

Almondsbury Surgery

Autumn / Winter Vaccinations

Almondsbury Surgery will be offering FLU and Covid vaccinations to eligible patients from September 2023. We will contact eligible patients when appointments become available. Eligible groups include:

- Care Home Residents
- Frontline Health & Social Care Workers
- Age 65yr+
- Pregnant women
- Under 65yr at risk with a chronic disease as listed below:
 - Coronary Heart Disease
 - Diabetes
 - Asthma (requiring inhaled or systemic steroids, or causing hospital admission in last year)
 - Chronic Renal Disease
 - Chronic Liver Disease
 - Chronic Respiratory Disease
 - Immunosuppression
 - Chronic Neurological Disease, including Stroke or TIA
- Close contacts of immunocompromised individuals
- Carers
- Children aged 2 or 3 years on 31st August 2023

School campaign – vaccine to be administered by schools, unless in an at-risk group:

- Primary school children (unless in at-risk group)

New Access & Appointment System

Hanham Health implemented a new access and appointment system on 16th August - Anima. Further information on how to access our services is available on our website. By allowing patients to access our services online, we hope to free up the telephone lines for those who really need it. Improvements to our telephony system are planned for late 2023/early 2024, to introduce better information and options for patients queuing. Regrettably these changes cannot be made sooner due to our existing contract.

We thank you for your support and understanding during the transition.

gsharchitects



FREE CONSULTATION

For further information please contact us on:

info@gsharchitects.co.uk
www.gsharchitects.co.uk
Almondsbury, Bristol

07780 000220

Build without planning permission

Quality design service from
concept to completion

Planning, construction drawings and
contract administration service
tailored to suit you

Domestic, Commercial,
and Sustainable Architecture.

Experienced working with
Listed Buildings

Build your dream home in your
garden

Development Advice and Appraisal

3D Visualisation Services

RIBA 

New Passage Cat Kennels

*Large Runs ~ Heated Chalets
Licensed Cattery
in Pilning*

Tel: 01454 632 456
www.catkennels.co.uk



Design & Planning

Home Extensions - Change of Use - Floor Plans
Full Planning & Building Regs drawing service
Almondsbury based with successful local projects

contact Julian Lowther for friendly professional advice

t:0117 2591059 julian@jfl-planning.co.uk
m:0789 0179546 www.jfl-planning.co.uk

G.V.R PITCHER & SONS

The Yard
Haw lane
Olveston
Bristol



TEL: 01454 619299
MOB: 07989 208964

Property Care & Improvements

Olveston Parish Historical Society

Here's what's in store for 2023/24. Everyone welcome... just turn up!

Wed. 4th Oct. 2023: Welcome, all! After a short AGM, we'll have an update from Aaron Girdlestone on the local Excavations at Lower Hazel. This summer's dig, carried out by volunteers and university students, has revealed that the site is more extensive than first thought, with mysteries still to unravel.

Wed. 1st November 2023: Cocktail and gin history specialist, Anistatia Miller, has recently returned to study (MA, MSc, PhD) and is discovering a huge amount about The History of Brewing in Bristol from the 16th to the 18th Centuries. Come along and hear - it's fascinating!

Wed. 6th December 2023: A welcome return for Dr Mark Lewis, Senior Curator (Roman) at the National Roman Legion Museum in Caerleon, who will give us a talk called Saturnalia: From Roman Winterfests to Modern Christmas Customs. Discover how some of our present customs have Roman origins.

Wed. 10th January 2024: Nine or ten years ago, some of us visited the Bristol Port Company at Avonmouth, learned about its history and had a fascinating guided coach tour around the site. Spool forward a decade and now one of the company's directors, John Chaplin, will give us an illustrated talk about the Challenges and Opportunities of Planning for the Future at Bristol Port Company.

Wed. 7th February 2024: Professor Richard Coates has been investigating The Shirehampton Remount Depot (1914 -1927) and can explain how this vitally important site coped with mind-bogglingly vast numbers of horses and mules needed for haulage and pack duties on the Western Front.

Wed. 6th March 2024: Philip Ashford returns to tell us about The Experience of Travel in the Bristol Channel 1420-1820. Using diaries, government papers, private memoirs and business sources, Philip will explain why people of all sorts came and went, and the hazards they encountered at sea.

Wed. 3rd April 2024: Local landowner John Gunnery will be giving us a fascinating talk about Tockington Park. Expect to hear about the deer park and the Roman villa! Not to be missed.


Venue: Olveston Methodist Church, The Street, Olveston. 7.30pm

Annual membership rate for all 7 talks is £10 in total (pay on the night) or £3 for a single meeting (pay on the night).

Programme Secretary: Jenny Newley 01454 202011

Website: <http://www.olvoston.com/historical-society>

****Introductory Offer****
£10 off any 60 min treatment



Pamela MacLeod
HOLISTIC THERAPIES
REFLEXOLOGY • MASSAGE • AROMATHERAPY

Member of Federation
of Holistic Therapists

07765804144

FULL BODY MASSAGE	60 MINS	£45
*AROMATHERAPY MASSAGE	60 MINS	£48
BACK, SHOULDER & NECK MASSAGE	30 MINS	£25
REFLEXOLOGY	60 MINS	£45

Please allow at least 15 minutes for Consultation

**A blend of pure essential oils will be tailored to address each individual's needs.*



**Winning the gold medal for
children's sports classes**



**It's the magical combination of imaginative play, sport and
burning energy! Outdoor classes this summer for 2-7 year olds.**

- The Chantry, Thornbury - Friday mornings
- Almondsbury Creative - Saturday mornings

Contact: Hannah Shears Email: hshears@miniathletics.com

www.miniathletics.com

Mini Athletics Bristol








BATHROOM & WET ROOM DESIGN & INSTALLATIONS

TILING • GENERAL PLUMBING • PLASTERING

BILLY COOK
WJC PLUMBING & TILING

07748 085 920
WJCPLUMBING@OUTLOOK.COM

 [FACEBOOK.COM/WJCPLUMBINGANDTILING](https://www.facebook.com/WJCPLUMBINGANDTILING)
 [INSTAGRAM.COM/WJCPLUMBINGANDTILING](https://www.instagram.com/WJCPLUMBINGANDTILING)

Thornbury Art Club - What's On

Tuesday 5th September. Tuesday Painting Studio Group. 1.30-4.30pm. Tel. 01454 414433

Thursday 7th September. Thursday Painting Studio Group. 1.30-4.30pm. Tel. 07776271010

Tuesday 26th September. Monthly Club Night. 7.15 for 7.30pm.

Vicki Norman will be giving an oil painting demonstration, which will include tips and useful observations for painters in all media. Visitors welcome. Non-members £5. Tel. 01454 414433 for further details.

Venue: St. Mary's Church Hall, Eastbury Rd, Thornbury, BS35 1DR

We are also planning to begin an evening weekly Studio Group. Beginners and experienced painters are all welcome to any Club activities. For enquiries, please visit <https://www.thornburyartclub.org.uk/> or find us on www.facebook.com/ThornburyArtClub

Contact: Mary Drown 01454 414433, chairthornburyart@gmail.com or Pat Howarth 01454 822468, patricia.howarth@hotmail.co.uk

Thornbury Choral Society

Congratulations to Thornbury Choral Society on reaching its 60th Anniversary.

After our summer break, Thornbury Choral Society resumes rehearsals on Monday, September 4th at 8.00pm. As usual, our rehearsals will take place at the United Reformed Church. The first rehearsal will be preceded at 7.30pm by the AGM.

We shall be preparing for our Autumn Concert, which will be in St. Mary's Church on Saturday, November 25th at 7.30pm. The choir will be performing The German Requiem by Brahms and some pieces by Mendelssohn.

On Monday, September 11th, we will be holding a 'Welcome Evening' at 7.30pm prior to the rehearsal. If you are interested in finding out more about us, do come along. We are always looking to recruit new members. We are sure that there are many new residents who have come into the area and enjoy singing and are looking to meet new people. Do come and find out more about us.

For more information look on our website:
www.thornburychoralsociety.org.uk



GARDEN MACHINERY SPECIALISTS
SALES, SERVICE AND SPARES

E-MAIL: themowerdoctor@hotmail.co.uk WEBSITE: www.themowerdoctor.net
ADDRESS: Unit 2-3 The Rearing Unit, Oldbury Lane, Oldbury-On Severn, BS35 1RF
TELEPHONE: 01454 411 701







DEALERS FOR:








PHYSIOTHERAPY
CHIROPRACTIC
PODIATRY
CHIROPODY

"Optimise your Health"

Please Enquire:

Tel: 01454 528608
Email: info@optimuscp.com
Web: optimuscp.com

11 The Plain, Thornbury, BS35 2AG

OLDOWN
TREE SURGEONS

TREE SURGERY AND HEDGE MAINTENANCE

PROFESSIONAL. QUALIFIED. FULLY INSURED.

www.oldowntrees.org

Antony Leicester 07800512408 info@oldowntrees.org



Computer support and solutions for the home and business user.

- PC/laptop repairs
- Virus removal
- Wifi/broadband issues
- Sponsors of Olveston FC

EC COMPUTERS

How can we help? Tel: 01454 281 500 Web: www.eccomputers.co.uk

IT Support/Repairs Office Equipment Print Solutions Telecoms Cyber Security Managed Services Software/Database applications

Thornbury Arts Festival



The closure of the town's Armstrong Hall complex has caused major difficulties for festival organisers, but they have found alternative venues for the events planned. The determined volunteers hope a mix of three evening shows, a variety of lunchtime talks and a guided walk will appeal to a wide range

of festival-goers. The programme will run on seven days between September 27th and October 4th.

The first evening performance features Britain's Got Talent semi-finalists, the Big Gospel Choir. The singers have regularly appeared on TV and their powerful voices and beautiful vocal arrangements will fill St Mary's Church on Thursday, September 28th.

Cop-turned comedian Alfie Moore, star of the hit BBC Radio 4 comedy series It's a Fair Cop, will entertain an audience in Tytherington Village Hall on Friday, September 29th. Alfie spent 20 years on the beat, where a keen sense of humour was key to his success and his survival, and dealing with everyday incidents generated a host of stories that you just couldn't make up.

On Saturday September 30th Marlwood School Drama Hall will host Posting Letters to the Moon, when letters written by Celia Johnson and Peter Fleming during the Second World War will be read by their daughter, Lucy Fleming, and Simon Williams, who plays Justin Elliott in BBC Radio 4's The Archers. Celia told of coping with a house full of evacuated children, learning to drive a tractor, dealing with rationing, and becoming an auxiliary policewoman, while continuing to act. In 1945 she starred in the film *Brief Encounter*, for which she received an Oscar nomination. Peter was away for most of the war and wrote about his adventures and trials in India and the Far East.

The lunchtime talks will be given in Thornbury's United Reformed Church, with topics ranging from wartime Land Girls (Fiona Warin) and the NHS at 75 (Dr Nancy North) to writing a debut novel (Justine Pullan) and the life of an auctioneer (Philip Taubenheim).

Meanwhile, the festival's popular guided walk will see local historian Meg Wise leading a party around Thornbury on Sunday, October 1st, to discover where some of the town's ancient inns and beer houses used to be and learn about the history of pubs still open today.

Visit the festival website www.thornburyartsfestival.org.uk for full details about events and tickets.

YOUR PC GURU

COMPUTING FOR 'MERE' MORTALS

01454 616365

- Home visits
- Computer Repair
- Phone & Tablet setup
- Home Wireless & Broadband
- Smart Home Tech
- Complete Mac support

www.yourpcguru.co.uk
Technology Advice & Repairs

JC 4x4 Ltd SPECIALIST IN LANDROVER

SERVICE • REPAIR WORK • DIAGNOSTICS • MOTS • OTHER VEHICLES WELCOME

CALL JAMES: 01454 261067 / 07966 086447



07307 727244

Free Quotes

Domestic	Radiant heating
Commercial	Boilers
Breakdowns/ call outs	Radiators
Servicing	Plumbing
Installations	
Warm air heating	LPG, natural gas, oil



www.edgeheatingandplumbing.com info@edgeheatingandplumbing.com



Thornbury Community Permaculture

Thornbury Community Permaculture (TCPP) was started in March 2022 at the Alexandra Way Care Home, Alexandra Way, Thornbury. The purpose of the TCPP is to create a space and place where volunteers can learn about and practice the permaculture principles of 'earth care', 'people care' and 'future care'. The main activities within the garden are to transform the outdoor space by planting pollinator friendly plants, setting up no-dig beds to improve soil health and creating self-sustaining systems to feed the garden such as composting, comfrey plant 'tea', and leaf mulch stores. A new sensory bed was begun this year and the planting has been chosen to increase biodiversity as well as engaging the senses.

All volunteers over 16 years old are welcome to Thursday morning sessions which run from 9.30am to 11.30am. Suitable clothing should be worn for the weather conditions and garden tools will be provided.

TCPP is a project supported by Sustainable Thornbury. For more information visit: www.sustainablethornbury.org

September at Thornbury Library

Ready, Steady, Read

This year's Summer Reading Challenge finishes on 9th September for all primary age children. Don't forget to come and get your certificate, medal, and free swim voucher when you have read our six books.

Community Learning

Saturday 2nd and 9th September 9.30 - 12

Come along and find out about, and sign up for, free courses throughout the autumn with Aimee from South Gloucestershire Community Learning.

For more information about what is happening at Thornbury Library, please visit: <https://beta.southglos.gov.uk/thornbury-library>



XL Plumbing & Heating Solutions Ltd

- General Plumbing
- Boiler Installation, Servicing & Maintenance
- Gas Safety Certificates
- Bathroom Installation & Tiling

Contact Mark Mob: 07738 726803
Email: xlplumbing@hotmail.co.uk
Tel: 01454 549008
Web: www.xlplumbing.co.uk





**NORTH BRISTOL
BATHROOM SHOWROOM
BS32 4HY**

**Scan the QR code for a
No obligation
Design & Quotation
Appointment**





Use code ALM25 to receive
25% DISCOUNT

**North Bristol Bathroom Showroom
Gloucester Road
Almondsbury
Bristol
BS32 4HY**

 **0117 980 7419**

 **showroom@nbbs.plumbing**

 **@nbbshowroom**

 **North Bristol Bathroom Showroom**



Volunteer Fair

Thornbury Volunteer Centre invites you to join them at a Volunteer Fair on Thursday 14th September between 9am-1pm in St Mary Shopping Centre, Thornbury. There will be charitable and volunteering stalls who will be promoting their organisations, publicising volunteering opportunities and selling a wide range of goods. Please visit us and find out how you can make a difference to your local community.

This event is sponsored by the St Mary Centre, Thornbury and South Glos Council.

Thornbury Volunteer Centre can be contacted via mail@volunteer-thornbury.co.uk

Yours Faithfully

Trevor Cook

Focal Minister, St. John's, Aust

As I began to write this (in late July), the sound of harvesters, tractors and trailers reverberated across the fields and through the lanes; the harvest had begun. One or two fields were stripped with seemingly effortless ease as God's bounty was gathered in. And then the heavens opened!

For, despite the apparent ease of gathering in, the harvest's success is still affected by factors over which mankind has no control, factors that we attribute to God; factors such as good weather, freedom from pests and disease and, especially in these days, the ravages of war

Harvest success is thus a gift from God; a gift facilitated by farmers and growers who work hand-in-hand in a partnership between God and man if you will. A cooperation that we recognise in our Harvest Festivals as we sing the first verse of that favourite harvest hymn:-

"We plough the fields and scatter

the good seed on the land

but it is fed and watered

by God's almighty hand"

Whatever the effect of the atrocious July weather this year, we rest our hopes in God; just as we also offer thanks to all those men and women whose aim in life is to feed us.

So let us thank God for the bounty of the harvest and celebrate together when, in the words of another hymn, *All is safely gathered in.*

MEMORIALS &
MONUMENTS



Supplied & Erected

NEIL VIZARD
01454 419108

BAMFIELD
TREE SERVICES
TREE SURGERY AND LOGS



www.bamfieldtreeservices.co.uk
07761 810483

prestige
event equipment hire

Supplying you with the best equipment to succeed!
CELEBRATIONS & CORPORATE EVENTS

CUTLERY, CHINA, GLASSWARE, LINEN, REFRIGERATION,
COOKING EQUIPMENT, BARBEQUES, FURNITURE & MORE

Fast and Efficient, we stock a wide variety of
equipment covering anything from
WEDDINGS to FESTIVALS.

For a FREE quote please call: 01179613170
info@prestigecateringhire.co.uk
www.prestigecatering.co.uk

**'Indawes
- Outdawes'**

Decorating and
Home Improvements

Painting | Wall Papering
Floor Laying

Martin Dawes 07720 509653
martin.dawes@live.com

Window Cleaning

07976 694744 - 0117 9085794



M. Gray Window Cleaning

Family run business for over 25 years
experience working in the Almondsbury,
Olveston, Aust areas - and nearby.

Email: mgwc1@hotmail.com

Church News

ST MARY the VIRGIN, OLVESTON

Sep 3	10am 6pm	Holy Communion Evensong	Rev David Moss Rev David Moss
Sep 10	10am 6pm	Morning Prayer Holy Communion	Rev Ann Lloyd Rev David Bone
Sep 17	10am 6pm	Harvest Service Holy Communion	Janet McBride Rev Ann Lloyd
Sep 24	10am 6pm	Holy Communion Evening Prayer	Rev Ann Lloyd Janet McBride

Every Saturday in Term Time, 'REFRESH', 4.30-5.30 - Fun, relaxed church for families, all welcome.

Every Wednesday, Holy Communion, 10am. NB. Clergy may change.

Contact: Rev David Moss, 01454 415190; email: mossds@gmail.com

CHAPELRY OF ST JOHN, AUST

Sep 10	10am	Morning Prayer	Trevor Cook
Sep 24	10am	Harvest Service	Trevor Cook

Contact: Trevor Cook, 01454 618442

Church Wardens: Jenn Dickens 632312 and Jon Burnett 633835

ST MARY DE MALMESBURY, LITTLETON-ON-SEVERN

Sep 10	9am	Morning Prayer	Rev Ann Lloyd
Sep 24	3pm	Harvest Service	Tracey Black

Contacts: Tracey Black 417660 and Tim Pyper 416422 /07802 419451

HOLIDAY LET 6 BERTH HOLIDAY HOME
(2 Bed, 1 Ensuite)



LADRAM BAY
OTTERTON . BUDLEIGH SALTERTON . EX9 7BX

Central Heating . Double-Glazed
Private Beach . Fishing Trips . Cliff Walks
Restaurant . Bar . Live Entertainment
Indoor Pool . Kids Club
Shop . Cafe . Takeaway

Tony Gardner
07889 727 729

greenside
Landscaping

The Cottage, Hortham Lane,
Almondsbury, Bristol BS32 4JP

Greenside Landscaping can offer a wide range of services including:

**Artificial Grass ~ Brick & Block Driveways
Decking ~ Fencing & Gates
Garden Design ~ Patios & Paths
Planting ~ Ponds & Water Features
Turfing & Seeding ~ Walling**

We pride ourselves on flexibility and we strive to meet our client's requirements and budgets.

www.greenside-landscaping.co.uk
Tel: 01594 841559 Mob: 07980 384321
Email: paulbradburn@hotmail.com

MORAS
Decorating Services

ANDREW MORAS
Quality Painting and Decorating Services

For your **FREE** no obligation quote contact Andrew:

07962069036

✉ andrew@morasdecorating.co.uk
www.morasdecorating.co.uk

Tavira
Algarve, Portugal
3 Bed Apartment
"can accommodate up to 8 people"

Modern 3-bedroom apartment in picturesque & historic Algarve town. 2-bathrooms including one en-suite, 2-balconies & roof terrace. Fully furnished, sleeps 6-8. Easy walking to thriving town centre. Close to railway station, golf courses & beaches. 30 minutes drive from Faro. Ideal for families or golfers. Tel: 07889 727729
Email: anthonyar@aol.com - www.aminpadtavira.co.uk

TAVIRA - EAST ALGARVE
EASYJET & RYANAIR
NOW FLYING TO FARO
FROM BRISTOL

BEDLAM
www.bedlambeds.com

- Free local delivery
- Free assembly
- Free disposal of your bed

Divans / Mattresses / Ottoman & Wall beds /
Memory foam & latex mattresses / Beds made
to measure / Pine, Metal & leather beds

**Open Tuesday to Friday: 9am-5pm
Saturday: 10am-3pm**

Visit our showroom: The Old Post Office
26a Gloucester Road, Rudgeway, Bristol,
BS35 3RY (by the speed camera)

01454 617 277 or 07887 853479

Thornbury Stairlifts
SALES SERVICING & REPAIRS

• New & Re-conditioned Stairlifts & Warranty
• Removals & Relocations
• Free Surveys & Quotes – No Obligation
• Rentals for Straight Stairs

Independent, Professional & Friendly Advice
Over 24 years practical experience

Independent Stairlift Specialist
01454 413748 07833 318722
www.thornburystairlifts.co.uk

ST JOHN THE EVANGELIST, ELBERTON

Sep 10	9am	Morning Prayer	Judith Heybyrne
Sep 24	6.30pm	Harvest Service	Judith Heybyrne

Contact: Judith Heybyrne 616725

Church Wardens: Catherine Gunnery 413225 and Cheryl Meredith 411065

OLVESTON AND TOCKINGTON METHODIST CHURCH

Sep 3	10am	Tock Ch	Morning Worship led by Rev Dr Simon Edwards
Sep 10	10am	Olv Ch	Morning Worship led by Rosalie Doyle
Sep 17	10am	Tock Ch	Morning Worship led by Mr K Thomas
Sep 24	10am	Olv Ch	Morning Worship led by Mr J Creech

Contact: Rev Dr Simon Edwards 418176, simon.edwards@methodist.org.uk

THE VINE House of Prayer, Pilning Street, Awkley BS35 4HL

Meeting at 11am every Sunday and on the 1st and 3rd Wednesdays of each month at 2.30pm.

Contact: 01454 612084

THE OASIS CHURCH, OLD DOWN

Services at 6.30pm every Sunday. All are welcome.

Contact: Neil Mobbs, cnmobbs@hotmail.com

AUST EVANGELICAL and LITTLETON EVANGELICAL CHURCHES

Contact: Danny Bamfield 01454 419324 e-mail danny@thebamfields.co.uk

RC CHURCH OF CHRIST THE KING, Thornbury -

Mass on Sundays at 9.30 and 10.30am

Contact: 01454 412223, www.ctk-thornbury.org.uk

SOCIETY OF FRIENDS (QUAKERS), Thornbury

Contact: Chris Willmore, chriswillmore@blueyonder.co.uk

Diary Dates for September

Information believed to be correct at going to press.

1 Fri	Haven Memory Café First Friday Community Café	10.15 9 - 11.30	URC TMC
2 Sat	Litter pick Aust Fete at the Boars Head	10.30 2pm	OPH
4 Mon			
5 Tues	Over 60's Coffee Morning every Tuesday Citizens Advice, every Tuesday, Town Hall Macular and Low Vision Group RBL Women's Section	10-12 10-12 10.30 7.30	DGCL TMH DGCL
6 Wed	Table Tennis every Wednesday	7pm	PH
7 Thurs	Thornbury Farmers' Market Coffee Shop 'Good Afternoon Choir', every week Thornbury Art Club every Thursday	9.30 9-12 1-3 1.30	S+M URC SMCH
8 Fri			
9 Sat	Coffee Morning at Olveston Methodist Hall Edward Jenner talk	10.30 7.30	OMH SMCH
11 Mon	Men's Walk and Chat Group, 2 nd and 4 th Mondays, meet Tock Green Severn Vale Flower Club, demonstration	9.30 2pm	SMCH
12 Tues	Thornbury Memory Café WI	10.15 7.30	TMH OPH
14 Thurs	Thornbury Farmers' Market Coffee Shop	9.30 9-12	S+M
15 Fri	Haven Memory Café	10.15	URC
16 Sat	St Mary's Summer Soirée Oldbury on Severn	6-9	
18 Mon		2pm	SMCH
19 Tues	Thornbury Art Club - club night Olveston Parish Council	7.30 7.30	SMCH OPH
21 Thurs	Farmers' Market Coffee Shop 'Calendar Girls' - until Saturday	9.30 9-12	S+M

23 Sat	Tockington Harvest Fayre, The Green	2pm	
25 Mon	Men's Walk and Chat Group, Tock Green Severn Vale Flower Club, practice	9.30 2pm	SMCH
26 Tues	Thornbury Memory Cafe	10.15	TMH
28 Thurs	Coffee Shop	9-12	S+M
29 Fri			
30 Sat	Scouts Line of Coins (Starts at Crusty Loaf) plus cakes and drinks Village Talent Contest	10am 7.30	OMH S+M

KEY: **AMC** - Alveston Methodist Church, **AMH** - Alveston Methodist Hall, **CS** - Castle School, **CTK** - Christ the King, **DGCL** - Daldry Gardens Community Lounge, **EVH** - Elberton Village Hall, **OC** - Oasis Church, Old Down, **OMC** - Olveston Methodist Church, **OMH** - Olveston Methodist Hall, **OPH** - Olveston Parish Hall, **QAMP** - Queen Alexandra Memorial Pavilion, Old Down, **S+M** - St Mary's Church, **SMCH** - St Mary Church Hall Thornbury, **TCC** - Turnberries, **TMC** - Tockington Methodist Church, **TMH** - Thornbury Methodist Church Hall, **URC** - United Reform Church



Contact details for any clubs or organisations in the Meeting Point area can be found in the Meeting Point Directory on the community website: www.olvostonandaust.com. If you would like to update your organisation's details, please email: meetingpointsecretary@olvostonandaust.com

Advertisements Neither Meeting Point, its editor, nor management committee accept any responsibility or give any guarantee in case of any dispute or claim as to quality, condition or delivery of commodities or services advertised in this magazine. It is not to be taken that publication implies recommendation. It is always advisable to check prices when ordering goods or services.

Views expressed by contributors are not necessarily those of the editor or Meeting Point magazine
Copyright Meeting Point 2023. Copyright remains with the author(s) and Meeting Point. No part of this publication may be reproduced or transmitted in any form without the prior permission of the copyright owners.

Meeting Point is printed by Motion Printing Ltd.



Matrix

Vehicle Solutions

- Valeting
- Detailing
- Based In Olveston
- Machine Polishing
- Ceramic coating
- Fully accredited/insured



Tel. 07852 127772
www.matrixvaleting.com
matrixvaleting@hotmail.com