

Meeting Point



45th Anniversary

October 2021

TRUE BLUE TAXIS
(OLVESTON)

Local Taxi Company



Honest, Reliable and Safe
Cash or Card Payments



Mobile:

07967 042794

Top-to-Tail Housekeeping

- Professional
- Dependable
- Comprehensive service

**Trading
Standards
Accredited**

**Felina
Contract Cleaning**

01454 201562
07790 050187
cleaning@felina.biz
www.felina.biz



Weddings | Funerals | Bouquets | or just because...

Beautiful
flowers for any
occasion...

Our Shop is open Tuesday to
Saturday ~ 9.00am to 5.00pm

Taking walk in and phone orders

Delivering to BS35 and
surrounding areas ~ Tuesday to
Saturday from 9.00am to 5.00pm

Holding socially distanced
meetings for weddings and
memorials should you wish to
discuss plans

Please call for prices or pop into
the Shop in The Arcade,
Thornbury



t: 01454 416111

e: flowers@joliesfleurs.co.uk

THORNBURY
Chiropractic
CLINIC

www.thornburychiropractic.co.uk

STOPTOBER

GIVE UP SMOKING WITH

ACUPUNCTURE

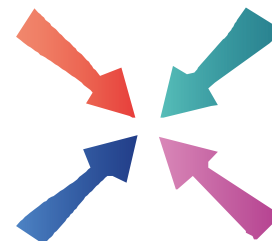
SPECIAL OFFER

4 sessions for £120

(usual price £130)

FREE consultations available

01454 418259



Meeting Point

Volume 46, Number 1, October 2021

The community magazine for the villages of Olveston,
Tockington, Old Down, Lower Hazel, Awkley, Ingst, Aust, Elberton and Littleton upon Severn

EDITOR:

Marelin Orr-Ewing

Courtlands

Olveston

Bristol BS35 4DU

Tel: 01454 610081

**meetingpointeditor@
gmail.com**

ASSISTANT EDITOR:

Angela Williams

Ashlea

Haw Lane

Olveston

Bristol BS35 4EG

Tel 01454 612850

**meetingpointmagazine@
gmail.com**

ADVERTISING:

Bernard Amos

Tel: 01454 620388

**meetingpointadvertising@
gmail.com**

Publication date

1st of each month

**Material for November 2021
to the Editor or Deputy Editor
by 11th October 2021.**

From the Editor

As you will see from this month's cover, Meeting Point is celebrating its 45th Anniversary.

There have been many changes to the look of the magazine over these 45 years, from typed to word-processed, from 12 pages to 48, from black and white to colour and, last month, we moved to a glossier paper which enhances the many photographs we now use.

Meeting Point is run by a committee with each member having his or her own role which, each month, contributes towards the production and delivery of the magazine. Readers might not know that one member of the current committee – June Robbins - has been with Meeting Point since day one and another – Trevor Watkins – joined in 1982.

I hope you enjoy this anniversary edition, which includes a mixture of information about local events and articles of interest – rather like the first edition back in October 1976.

Marelin

This month's cover is by the late Kate Hickman

Meeting Point Founded in 1976 by the Anglican and Methodist churches in Olveston, near Bristol.

**Meeting Point magazine and Meeting Point Directory are online at the
Community Website: www.olvostonandaust.com**

Thornbury Motors

- New and Used car sales
- Servicing, repairs and MOTs on all makes



thornburymotors.co.uk 01454 412535



Grovesend Road
Thornbury
Bristol
BS35 2EF



SAVAGE ASSOCIATES

Accountants·Business Advisors
Corporate & Personal Tax Consultants

The Coach House, Aust Road
Olveston, Bristol BS35 4DE
Tel 01454 610388 Fax 01454 201541

for an initial consultation please contact:
edd.savage@savageassociates.co.uk

Vicarage Farm Holistic Therapy Centre

Bringing balance back
into your life.
Offering a wide range of
Holistic Treatments.

Hypnotherapy

A safe and effective treatment: to
remove stress, anxiety, depression
and phobias. Allowing positive and
powerful changes in your life.

Tel 01454 614390
www.vicaragefarm.org

Historical Society: Autumn Exhibition

Archives Exhibition: Parish Hall, Tockington.

Sunday 31st Oct. 12.30 - 4.30pm. Drop in any time. All welcome. Free entry.
Covid precautions will be in place.

We have decided not to hold indoor evening meetings before the new year but, to show that we're still active, we thought we'd put on a public exhibition of items from the archives of Olveston Parish Historical Society. Drop in when you're passing and see photos of the local villages in years gone by!

We'll have pictures of the building of both Severn Bridges and associated roadworks, the local celebration in 1995 of the 50th anniversary of VE Day, The Villages at Work around 1994, and much else.



The construction of the Second Severn Crossing, which opened in 1996

You'll also be able to see the results of a couple of recent projects:

- the transcribing and digital plotting of all the memorial inscriptions outside and inside the church of St Mary's Olveston. (We were worried that some gravestones were flaking and inscriptions were being lost.)
- the transcription of Olveston and Elberton manorial court records from the 18th and 19th centuries. You're bound to recognise some familiar local place names and surnames. Discover whether your great-great-great-grandfather was ever fined for not digging his ditches!

Come and join us. We'd love to see you.

D. YOUNG
GARDEN SERVICES
Fully Qualified with over 16 years Experience
Grass Cutting Hedge Cutting Turfing Fencing
General Landscaping

Tel: 01454 416206 Mob: 07545 131488
Email: d.younggardenservices@hotmail.com

hair of the hound
PROFESSIONAL DOG GROOMING SERVICE

- FULL GROOMS
- PUPPY PACKAGE
- NAIL CLIPPING
- DE-SHEDDING PACKAGE
- BATH & BRUSH
- HAND STRIPPING
- EAR CLEANING/PLUCKING
- TEETH CLEANING

Find us : 20 Strode Common, Alveston, Thornbury BS35 3PJ
Tel : 07936 067 107 Web : hairofthehound.co.uk
facebook : search hairofthehound

T. EDWARDS PLANT
Digger and Driver Hire

- Site/garden clearance
- Footings
- Drainage/soakaways
- Driveway preparation
- Stump removal
- Fencing & turfing
- Narrow access equipment

Price or day work t: 07900 372349
t.edwardsplant@gmail.com
CPCS/CITB qualified & insured

Divine
Bathrooms & Wet Rooms

07584 666154
Email: info@divinebathrooms.co.uk
Web: divinebathrooms.co.uk

iphe
Registered Plumber

S.J FARR
KITCHEN FITTING
SERVICES

Mobile: 07915673649

Our Associated Services Include:

- Plumbing
- Wall & Floor Tiling
- Decorating
- Plastering

City & Guilds Qualified

Geoff Gulliver
Carpentry & Joinery, Littleton
ALSO
UPVC Doors, Windows and
Conservatories. For a very
competitive **FREE** estimate

Ring (01454) 414947



St Mary's Church Tower Restoration

Peter Floyd

I still can't quite believe the amazing towers and bridges all around the church tower are all made of scaffold poles – indeed such was the interest, that a competition to guess the number used was held at the Church Fete last month. I guessed 300 but the number is in fact 823. What do I know?

Viewed from the ground and the air, during the day and floodlit at night, they are a fascinating 'cat's cradle' sight, quite apart from their job of providing access to replace the pinnacles; repair the clock and restore the tower after long years of letting in the rain.



The new pinnacles are now in position and the old ones (on the ground by the south wall of the church) are being offered for sale. The church still needs further funds, and it is hoped that local people might buy them, but we are aware that they may be quite popular to decorate peoples' gardens, (I wouldn't mind one myself) so we are seeking professional guidance in setting the guide price for bids. Advice on bidding can be obtained from Mike Wright 07967473020.

Even when this part of the work has been completed and the scaffolding removed, another, different 'cat's cradle' will go up around the external spiral staircase which, having been meanly built and squashed into the corner of the church between the chancel and north transept and with no foundations, is gently sliding down the side of the church and so must be underpinned and restored as well.

At the end of years of effort, we hope on completion that the heart of the greatest building in Olveston will be renewed and protected, making it good for a few more centuries.

Our newly extended stylish Thornbury Showroom now offers a Cash & Carry service

We have lots of carpet and vinyl remnants – are you looking for quality flooring at greatly reduced prices?
Why not pop along and see what we have in stock.

We offer FREE home visits, measures and quotes



**LAMINATE | CARPETS | VINYL | ARTIFICIAL GRASS
READY TO TAKE AWAY ON THE DAY**

**Phoenix Flooring
Limited** 

Unit 15 Hemingway Business Centre, Walker Way,
Thornbury Bristol BS35 3US
Opening Hours: Mon to Sat 9am - 5pm



These two photographs, taken by drone, give us a 'birds-eye' view of the work in progress.



2 Men Went To Mow

All Aspects of Garden Maintenance, Plants & Shrubs Supplied, Garden Rubbish Removal, Fully Insured

Garden and Tree Service Tel: 07956 311901
Local, Friendly and Reliable Email kev@2menwenttomow.co.uk

Tree Surgery (NPTC Qualified)
All Types of Tree Work Undertaken
Contract Grass Cutting
Beds & Borders Maintained
Pruning and Hedge Cutting
Planting

FREE ESTIMATES!

L. & J. GULWELL

Independent Family Funeral Directors

1 Quaker Lane • Thornbury

Tel: (01454) 418779

24hr Service

email: info@funerals.uk.net www.funerals.uk.net

Private Chapels of Rest

COMPANION AND DRIVING SERVICE

Driving Miss Daisy®
We're There For You

Now taking bookings in your area!

- For people of all ages unable to drive but wish to remain independent
- Supported trips to the doctor, hospital, shops, bank, hairdresser, vet, etc.
- Social outings, holidays, help at home and much, much more
- DBS checked and First-Aid trained
- Dementia friendly
- Wheelchair Accessible Vehicle
- Fully Licensed

To book your Daisy
07951 079 558 / 0333 014 6211
northbristol@drivingmissdaisy.co.uk
www.drivingmissdaisy.co.uk

Top quality Nursing and Residential Care

Beech House

Beech House Care Home provides excellence in all aspects of care for all our residents, offering the best in nursing care for the elderly and residential care for people with a diagnosis of dementia.

Our unique care service includes:

- beautiful gardens
- purpose built homes with 24/7 air circulation
- spacious rooms and wide corridors
- top quality chefs
- television with DVD and telephone in each room
- wheelchair provision at no additional cost
- high technology baths and walk-in showers
- regular minibus trips
- programme of interesting and stimulating activities

RECENTLY RATED Outstanding by Care Quality Commission

To arrange a visit, telephone **01454 412266**
For more information see www.bristolcarehomes.co.uk

Bristol Care Homes
providing a unique care service

Oveston's Proud Connection with the Tokyo Paralympics



Here is Oveston resident, June Hahn, reading one of the congratulatory cards she received after her granddaughter, Sophie Hahn, retained her Paralympic gold medal and broke the world record ... yet again!

All at Meeting Point add their congratulations to June and Sophie. Well done!

Alveston Repair Café

16th October. 10am to 1pm in St Helen's Church Alveston



The Alveston Repair Café is back! Our volunteers will be undertaking repairs to electrical goods, clothes, ceramics, bicycles and much more. A small voluntary contribution to costs is requested. Come along and bring your broken possessions. We hate to see things thrown away unnecessarily and aim to help return items to use and reduce scrap. We also hope that we will share repair skills and above all enjoy the day. Everyone is welcome.

This event is supported by the Alveston Parish Council and the Alveston Community Forum

www.olvestonpreschool.co.uk/pilning-site

Pilning Pre-School

NOW OPEN!

Offering amazing childcare to children aged 2-5 at the heart of our local community.

Pilning Village Hall
Open 9:00am - 3:00pm
Tel: 01454612074

Find us on Facebook

News from St.Mary's

Debbie Harries

Pet Service

We are having a Pet Service on Sunday October 3rd at 9.30am. Please come along with your pets! We would love to see you all with your 4 and 2 legged friends!

Art in Isolation

There will be an art exhibition at St Mary's over the weekend of 16th and 17th October. This will be pieces that people have created during the lockdown, so please come along and have a look! Tea and coffee will be available.

Quiz!

Our quizzes are back and the first one is on Saturday October 23rd at 7.30pm. Sweet and Sour Chicken is on the menu. Tickets £6. A maximum of six people per team. To book contact Debbie on oboe-debbie@live.co.uk We look forward to welcoming you back!

Church Fete



On Saturday 4th September, St Mary's held their Summer Fete, and what a wonderful afternoon it was! The sun came out along with so many villagers! It was a joy to see Olveston buzzing again! Thank you to all who worked so hard on the day and everyone who donated items. It just wouldn't have happened without you!



Photographs by John Hodges

 **PawsPetCare**
...simply for the love of animals

Providing care for your pets
when you need it

Contact Helen for a friendly and reliable service
07493 153520 or enquiries@pawspetcare.com
www.pawspetcare.com

Frontline Martial Arts

Traditional Martial Arts / Taekwondo

Mighty Mites (under 10's): Fridays 4.30-5.15pm at
Juniors (ages 10-13): Mondays 7.15-8.15pm
Adults/over 13's: Mondays 8.15-9.45pm
at Alveston Youth Centre



Tel: 07771 692222
www.frontline-ma.co.uk

SEVERN SIDE TAXIS

SIX SEAT COMFORT
AIR CONDITIONED CAR



AIRPORTS
BUS STATIONS

HOSPITALS
EVENINGS OUT

RING STEVE WARD
07879 601011

THE WHITE HART INN Olveston



Traditional 17th Century English Pub

Catering for Parties and Functions
Wide variety of cask & keg beers
Skittle alley & pool table available
Book now for Skittle Matches
Award winning courtyard garden

Telephone: 01454 612175

FRANCIS

DESIGN & BUILD

Carpentry & Building Services

For all aspects of carpentry

Doors, Skirting, Kitchens, Fencing,
Decking, Stairs, Timber frame etc.

Call Craig on 07970 514409
(or, if busy)

email: craigyoung0308@live.co.uk



Greenforce

Making Space for Wildlife is an Olveston Parish Council initiative, which aims to help restore nature in our little part of the world, and to engage residents with these efforts. The project is currently focussing on two species, hedgehogs and swifts, and the article that follows sets out what exactly they plan to do for hedgehogs. This picture is of the Greenforce hedgehog box that is hidden discreetly in a corner of the churchyard, which may hopefully become the winter home of some wildlife, even a hedgehog!



Did you know..... that the palm oil industry is causing havoc with climate change? Deforestation in Indonesia is causing the displacement of indigenous people by taking over their land for the large-scale production of palm oil.

Half the palm oil imported into Europe is used as biofuel, which is three times more damaging to the atmosphere than fossil fuels.

Palm oil ingredients are used widely in beauty products such as shampoos, shower gels and make-up. Palm oil is also used heavily in processed foods and plenty of items that we enjoy such as peanut butter.

Have you thought of.....reading the labels of everyday items that are purchased and see how often palm oil is listed? There are similar products available which don't contain palm oil.


Making Space for Wildlife

Melinda Evans




As readers of Meeting Point may recall, the Making Space for Wildlife project has decided to focus on two species for now. One of them is swifts (more on this in future editions) and the other is the much-loved hedgehog.

As many people will know, hedgehog numbers have decreased significantly in recent years. There are a few reasons for this but, in residential areas, major factors include being killed on roads and fences that restrict their movement. The good news is that there

Severnside Heating & Plumbing 

- Installations
- Servicing
- Repairs

Working locally since 2003. An experienced heating and plumbing engineer. For a no obligation quote please call Mike
Mob: 07554 825813 Tel: 01454 613780



LA Electrical Services

Sockets, Lights, Security Lighting, Landlords Reports, Inspection & Testing, Consumer Units, Electric Heating, Rewires, New Builds, Garden Electrics, Car Charging Points, Solar PV, and More..

Your Local Electrician Richard Corney

  **01454 633 336**
laelectrical.com



"The Friendly pub where you arrive as our Guest and leave as our Friend"

 **GARDEN AND GROUND MAINTENANCE**

RAYS
GARDEN SERVICES

- Stump grinding
- Tree pruning & removal
- Hedges & shrubs trimmed
- Grass cutting
- Fencing
- Turfing
- Garden clearance
- Spraying for weed control
- Patios power washed
- Gravel areas laid

For a no obligation quote please call Chris Till on
07971 460239 / 01454 851771
or visit raysgardenservice.co.uk

are several things that we can do to help them. The Making Space for Wildlife project has come up with a 'hedgehog strategy', to give them some extra help. We will provide more information over the coming months but, in a nutshell, this is what we would like to do:

- 1) Work out where hedgehogs are in the Parish, using information sent in by residents. This could also be sightings in the recent past, especially from the past summer. We would like to collect this information using Hedgehog Street's 'Big Hedgehog Map', which is publicly available, see link below. If you have seen a hedgehog and would like to record this, there are two ways to go about this:
 - a. The best way is to record the hedgehog yourself on Hedgehog Street's Big Hedgehog Map, it is very easy to use. You will need the date of sighting, location of sighting and whether the hedgehog was alive or not. See <https://bighedgehogmap.org/>.
 - b. Send the information to us on olvestonhedgehogs@gmail.com and we can help to log the sighting. Please let us know when you saw the hedgehog, whether it was alive or not, plus a description of its location. A photo, drawing/map or screenshot might be useful here.
- 2) Using this information, encourage residents to create so-called 'hedgehog highways' (holes in fences) in areas where they are known to occur. hedgehog highways have been shown to be very effective in boosting hedgehog numbers in residential areas.
- 3) Explore the possibility of signage warning motorists of hedgehogs, particularly in areas where they are known to occur.
- 4) Help distribute information about what residents can do to help hedgehogs.

We know that some residents are already doing things to help hedgehogs, such as putting out food and having a hedgehog highway in their fences. St Mary's Church already has a hedgehog home in the churchyard.

Of course, if you want to get started there is no need to wait! Much of the information about what can be done to help hedgehogs can be found online. The Hedgehog Street website is particularly good and has an enormous amount of information and resources <https://www.hedgehogstreet.org/>.

If you find a hedgehog that you are concerned about, try contacting the British Hedgehog Preservation Society on 01584 890801, or there is information on their website too: <https://www.britishhedgehogs.org.uk/found-a-hedgehog/>



Making Space for Wildlife is part of the Olveston Parish Council Biodiversity backed and funded initiative.

**FOR ALL YOUR
PRINTING AND
DESIGN NEEDS**

motion
motiondesign&print

01454 631289
Based Severn Beach

BUSINESS CARDS
HEADED PAPER
NCR SETS & PADS
FLYERS & LEAFLETS
BANNERS & POSTER
CORREX PRINTING
BROCHURES & FOLDERS
GRAPHIC DESIGN
WEBSITE DESIGN

info@motionprinting.co.uk
www.motionprinting.co.uk

ACE1
Window & Gutter Cleaning

Window Cleaning
Gutter Cleaning & Repair
Fascia & Soffit Cleaning
Conservatory Roof
Solar Panel Cleaning
Power Washing



M: 07590 201264
T: 01454 436162

Table Tennis

Jeanette and John Treby

Table tennis is now in full swing on Wednesday evenings at 7pm in Olveston Parish Hall. We have a range of adult players of all abilities so, if you are a beginner or more experienced, you will be very welcome to join us for a fun evening.

If you are interested in joining us, contact us on 01454 202319 or john.treby@btinternet.com

Olveston and Tockington W.I.

After last month's first indoor gathering in ages, Olveston and Tockington WI is once again meeting in the Parish Hall. On Tuesday October 12th at 7.30 pm, we shall be hearing about a very enterprising woman who built her own theatre on the side of a cliff!

If you're interested, do come and join us. Contact Angela Green on 615222, if you'd like more details.

The Old Golf Course at Hazel

In the August magazine there was an article about the golf course that once occupied the land above and below Hazel Lane, Old Down. We invited any readers who knew more about this site to get in touch, and we were pleased to get some interesting feedback, so thanks to those who did! We now know it was called the Olveston Golf Club and there is plenty of information about it on the following website: www.golfsmislinglinks.co.uk.

St Mary's Church, Thornbury

On Sunday October 24th there will be a very special and unique Choral Evensong at St Mary's Church, Thornbury.

All the music has been written by members of the choir, as well as the words of the anthem and the hymns. It is an idea which has come from Mark Hoskins, a member of the choir, who says he has been thinking about a 'home-grown' Evensong for quite a long time. The service will begin at 6pm so come along to St Mary's and enjoy this unusual service. You will be most welcome.

ALMONDSBURY PHYSIOTHERAPY AND SPORTS INJURY CLINIC

Louise Brinson
Chartered Physiotherapist, hpc reg

Almondsbury Surgery, Sundays Hill
Almondsbury, BS32 4DS

Tel: 07786915442
Fax: 014540615745
E-mail:
physiolouise@hotmail.co.uk

Also at Aztec Spa Leisure Club

Olveston and Tockington
Parish Hall
07780 515317

A great venue for:

- Fitness
- Parties
- Public events
- Music & Dance

Check availability & book online at www.olvostonparishhall.co.uk

"Our newly decorated Hall"





Bristol Carriage Masters

- Religious or non-religious funerals
- Bespoke funerals for burial or cremation
- Fully guaranteed pre-paid funeral plans
- Direct cremations



177 Crow Lane, Henbury, Bristol, BS10 7DR
Telephone: 0117 950 8066
Website: www.bcm-funerals.co.uk
Email: admin@bcm-funerals.co.uk

Windmillcare Homes

— great places to Live



Windmill House

The original, elegant home in a delightful rural setting with 2 acres of beautiful gardens delivering unrivalled care

01454 413818



OSBOURNE COURT

Our brand new purpose-built home providing exceptional specialist dementia care in the heart of the village of Stoke Gifford

0117 944 8700

Residential, Short-term Respite and Day Care available

enquiries@windmillcare.com

or www.windmillcare.com

'Indawes - Outdawes'

Decorating and Home Improvements

Painting | Wall Papering
Floor Laying

Martin Dawes 07720 509653
martin.dawes@live.com

**ROG SKUSE
PAINTER AND DECORATOR**

FOR ALL YOUR
INTERNAL AND EXTERNAL DECORATIONS

CALL ROG
ON
07870459771

Is it a Moth or is it a Butterfly? That is the question.

Paul Godwin

So, what is the difference between a moth and a butterfly? They both belong to the same scientific order Lepidoptera and to many of us they seem very similar. Both have variations in colour, shapes and flight patterns. They are pollinators and have the same life cycle (mating, eggs, caterpillar, pupa, adult). But the main differences are as follows;

Butterflies, as a rule, only fly during the daytime.

Most butterflies have a relatively straight antennae with a 'club' at the end. In moths the antenna is sometimes curved and without a 'club'. In many males the antennae are feathery, thus enabling them to detect female scent.

Moths usually fold their wings down alongside their bodies in rest where many butterflies rest their wings above their bodies

Butterflies have four wings which are completely separate, whereas moths have their forewings and hindwings connected by a small 'hook' on each side of their body.

Please note there will be some exceptions to the above and just to cause some further debate, moths in France are called 'butterflies of the night' - *papillons de la nuit!*

There are significantly many more types of moths than butterflies.

Approximately 2500 moth species (daytime and night flying) are accounted for in UK and Ireland. However, most of us will only see a small number of these as day flying moths. Many are also micro moths which are difficult to see and identify.

As with butterflies, the protection of habitat is very important and certain moths will thrive in certain conditions. It is believed that in an average garden during the course of a year over a hundred different species of daytime or night-time moths may visit. Gardeners can do a lot to support moths by planting nectar rich flowers that the adult can thrive on throughout the year, such as bluebell, clovers, buddleia, lavender, scabious, daisy and French marigold. As well as larval food plants such as apple, birch, hawthorn and currants. It is also beneficial to have wild areas which can support grasses, nettles, thistles and knapweed.

I have very recently taken an interest in daytime flying moths by identifying some of those large caterpillars we occasionally see on our roads and footpaths. Many of these caterpillars are actually moths and not butterflies. The naming and identification of moth families and groups is beyond this


Tel: 01454 885766
Mob: 07724 166917

Ridge Roofing and Property Maintenance

Roofing ❖ Chimney Repairs ❖ Lead Work
 Guttering ❖ External Painting
 General Maintenance ❖ FREE Estimates

D-CR DOMESTIC APPLIANCES



Fast, friendly and efficient service
Sales - Service - Repair

Tel: 01454 850522 - Mobile: 07917441539
Email: d-cr@live.co.uk - Web: www.d-crdomesticappliances.co.uk

DOMESTIC APPLIANCE REPAIR SPECIALIST

- WASHING MACHINE
- TUMBLE DRYER
- DISHWASHER
- FRIDGE FREEZER
- COOKER
- HOB OR HOOD

Proud member of: 


Rotary

TOOLS FOR SELF RELIANCE
 Practical help for practical people.

People Can't Work Without Tools!


Thornbury Rotary Club, along with other Rotary clubs, has been supporting "Tools for Self Reliance" for many years. It is a UK based charity working to help relieve poverty in Africa by renovating and sending redundant tools to them. They then work with local African organisations to deliver a programme of tools and training that brings about effective and sustainable change for carpenters, builders, blacksmiths, artisans and their communities. Primary countries they work in are **Ghana, Malawi, Sierra Leone, Uganda and Zambia.**

So, if you have tools you no longer require, please contact
 Rotarian

Robin Cole-Morgan on 01454 414281
 He will arrange to pick up the tools and take them away at a time that suits everyone.

What you could declutter and donate:
 Garden Tools and Workshop Tools (for example, spanners, screwdrivers, chisels, planes, and hammers). They can be hand tools or powered.

Thank you!



YOUR OLD LAMBRETTA SCOOTERS WANTED IN ANY CONDITION FROM BASKETS OF PARTS TO COMPLETE BIKES CASH WAITING
CALL 07930 163347 AND 01453 810092

article but, for those who would like to learn more, there is a very interesting book I have referenced at the end of this article. Photographing moths has also proved to be quite difficult as most have been found quite deep in grasses, shrubs and trees. However, below is a selection of moths and caterpillars I have identified and photographed locally.

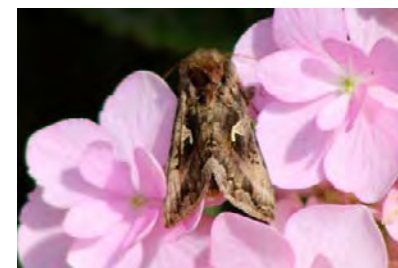
The Rusty Tussock Moth Caterpillar or Vapourer



This photograph of the caterpillar was taken in June in my garden in Olveston. It was beneath an apple tree on garden furniture. As you will see it has a striking appearance. The adults have quite a different lifestyle to many moths. The male flies by day and night between July and October but the females are not capable of flying as they have very

rudimentary wings. The female, once mated, will lay her eggs on her own cocoon from which she emerged and then die. The eggs will hatch the following spring. So, this moth is likely to stay very localised to an area and its wider dispersal is dependent on the caterpillar crawling to new locations. Tussock moths are 'furry' and have a feathery antenna and the male has a very defined white spot on each forewing. At the time of writing I have not seen the adult, but will keep a look out for the moth fluttering around our trees well into October. Food plants for the larvae are broad leaved trees and shrubs such as pyracantha and cotoneaster.

Silver Y Moth



This moth is an immigrant from continental Europe and is a very common day time flying moth. Its numbers can vary greatly each year and can be seen throughout the UK and especially in areas close to the coast. Food plants for the larvae are clover, nettles and, with apologies to gardeners and allotment holders, cabbage and runner beans. They are named as

such due to the silver Y which can be seen on its wings. The adult can be seen throughout the year and numbers can increase in winter when mild winds blow up from the continent. This photograph was taken on a hydrangea in my garden in August.

LINELA

embroid | print | promote

One place for everything promotional.
Specialising in embroidery,
printing and branded gifts



T Shirt Printing
Sports wear
Work wear
School wear
Promotional Products

Call us: 01454 615300

Email us: sales@linela.co.uk

www.linela.co.uk



Livewire Electricals
Electrical & Mechanical Solutions



Domestic, Commercial
and Industrial Installations

All electrics for new build, extensions and alterations to satisfy mandatory Building Regulations. Landlords safety inspections
Portable Appliance Testing (PAT)
Electrical and electronic service and repair
For 24 hour call-out service available please call Peter Jones: Tel: 07880 858785
Email: pete.livewire@blueyonder.co.uk
Local number Tel: 01454 613482
Visit our web site at
livewire-electrics.co.uk

BonneFreshClean
Carpet & Upholstery Cleaning Specialists

Love the look and smell of clean and fresh carpets and upholstery?

Bonne Fresh Clean brings to you a professional carpet and upholstery service that will leave them sparkling and fresh.

Call for a free no obligation quote today!

- Thorough, gentle deep cleaning, no residues
- Child and pet friendly treatments
- Latest industry approved qualification and full insurance



Bonne Fresh - Relax and enjoy beautifully clean and fresh carpets and upholstery!

T: 01454 436001 M: 07774 908410
W: www.bonnefreshclean.co.uk
44 Townsend Lane, Almondsbury, Bristol, BS32 4EQ

Rubbish problems?



Clearance from
Garages
Houses
Offices
and much more.

Call Nigel
01454 529 003

Shaded Broad Bar

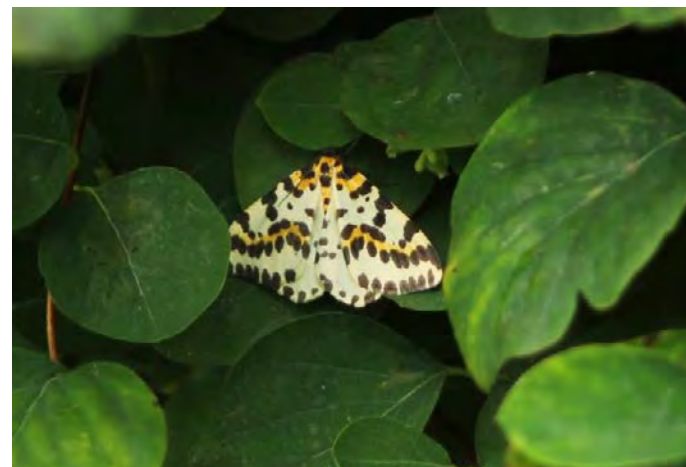


The shaded Broad Bar is featured as part of the UK's Biodiversity Action Plan as a species in need for research. This is a government response to the conservation of habitats. The photograph was taken in August at Harnhill.

It is found in grassy habitats throughout the UK and flies from June into September. It

is a nectar feeding moth which flies in daytime but feeds on flowers usually at night. It is named for its distinctive 'broad band' but colours can vary greatly. The larvae feeds on vetch and clover. Whilst classified as a daytime moth it also flies at night

The Magpie Moth



The colouring of this moth gives a warning to predators that it is distasteful. Whilst it is not specifically classified as a daytime moth, it is frequently disturbed and flies when that occurs. It is found across the lowland areas of the UK, with the

exception of the far north, and can be quite frequently observed flying. It has a wide-ranging habitat of woodland, moorland and grassland. This one was observed between Oldbury on Severn and Littleton on Severn. The adult drinks nectar from flowers and the caterpillars eat leaves from hawthorn, blackthorn and currant bushes. It overwinters as a caterpillar and the adult can be seen from spring

Beauty at the Barn

4, Grey Gables, Vicarage Lane, Olveston
For appointments telephone Nicola on
01454 201717



Jessica Manicures
GELeration Nails
Shellac Nails
Jessica Pedicures
Spray Tanning
Waxing
Ear Piercing
Eyelash Perming
Eyebrow Shaping
Eyelash tinting
And more...
Evening appointments available
Gift vouchers available



Olveston & Tockington Tennis Club

"Your local tennis club, next to Olveston Parish
hall"

Make 2021 the year to get back
on court.

Coaching for all ages.

Fabulous clubhouse with changing
facilities, kitchen, TV and table tennis.

Call Martin 07720509653

Everyone welcome

BREED BINS
Skip Hire Ltd

LOCAL TO ALMONDSBURY

T: 01179 692817

M: 07974 088147

E: breed.bins@yahoo.co.uk

Commercial and Domestic Skip Hire
& Aggregate Supplies



MD Aerials

Call Michael Dagger

T: 01454 418 341 M: 07817 304 236



Freeview – Freesat – Sky – DAB Aerials

Wall mounting LCD & Plasma
televisions setting up & tuning



mike@mdaerials.co.uk
www.mdaerials.co.uk

MOBILE BEAUTICIAN

(Based in Olveston)

- Waxing
- Shellac coloured gels
- Massage
- Manicures
- And much more!
- St Tropez Spray Tanning
- Ear Piercing
- Facials
- Pedicures

All available in the comfort of your own home
and better than salon prices!

Call Katie 07707 021195

www.kbeauty.co.uk



RB Foot Health Clinic

Professional Mobile Foot Health Care

...footcare in
the comfort
of your own home

For the professional
treatment of

Callus
Corns

Cracked Heels

Fungal & Thickened Nails

Ingrowing Toe Nails

Toe Nail Cutting

Contact Rachael
Mob: 07760 595224
info@rbfoothealthclinic.co.uk
www.rbfoothealthclinic.co.uk

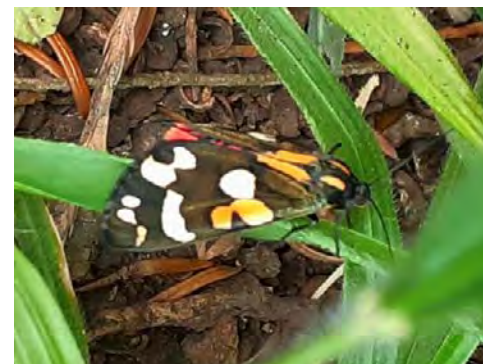
Rachael Button - DIP SAC MPS PRACT QUALIFIED NURSE

The Cinnabar Moth Caterpillar



This photograph is of the caterpillar feeding on common ragwort at Harnhill, which has been a very common sight this summer. The Cinnabar Moth also features on the UK's Biodiversity Action Plan for research. The caterpillar can strip a whole plant if they are in sufficient numbers and as you can see the two in the photograph are making a good meal of this plant. The caterpillar will climb down the plant to pupate in or close to loose debris on the ground, where the adult begins to emerge in late April and may occasionally fly until October. The adult is identified by distinctive red and black patterns but should not be confused with Burnet Moths which have similar colours but differing patterns.

Scarlet Tiger Moth



The Scarlett Tiger moth flies earlier in the year, between June and July and its distribution is damp sites such as riverbanks and marshes. It is common within the midlands, southern and southwest England and Wales. It is not seen in northern areas of England, Scotland, Wales or Ireland. This photograph was taken in our garden. Their colouration makes them quite unmistakable. The

caterpillars hatch in July, initially feeding on common comfrey, but then take to other plants. The caterpillars hibernate until spring, when they resume feeding and then spin a cocoon close to the ground before the adult emerges to fly in June.

If you are interested in further reading, there is a very useful book called Wild Guides; Britain's Day Flying Moths (Newland, Still and Swash). For online information try www.butterfly-conservation.org and www.ukmoths.org.uk.



Delivering the highest standards of homecare in South Gloucestershire for 14 years

Premier Homecare is the leading homecare provider in North Bristol and South Gloucestershire, having cared for over 2,000 families, ensuring they are safe, healthy and looked after

- Short and long term home help
- Flexible hours
- Bespoke care support
- Highly trained and reliable carers
- Personal Care
- From cleaning to 24 hour Live-In care

Inspected and rated
Outstanding ☆
Care Quality Commission

good care guide
★★★★★

Great British Care Awards
2016 WINNER

Call today for help with a loved one

PREMIER HOME CARE

0117 959 2013
www.premier-homecare.com



Catering for any occasion
Private parties, Birthday and Anniversary Celebrations,
Weddings, Funerals, Corporate Events,
Formal Dinners, Shoot Lunches... whatever the occasion

www.el-cuisine.co.uk Please contact Emma 07931952939 info @el-cuisine.co.uk

Tockington Manor School and Nursery for boys and girls aged 2 to 13 years

We're open for socially-distanced private tours

Come for a tour and discover our small friendly classes, enviable success rate in securing senior school places, wrap around care and dedicated nursery facilities.

If you're considering a school place for your child in September 2021 please contact us to arrange a private tour.




Call to book your private tour or 1:2:1 video call: 01454 613229

Friends of St. Mary's

The prize winners in the September draw, held on 4th September 2021 were:

Amount	Number	Name
£150	311	Mr & Mrs A Maunder, Cornwall
£75	173	Mrs B Morgan, Tockington
£25	479	Mrs S Farr, Olveston
£25	539	Dr & Mrs M Wright, Olveston
£25	300	Mrs J Rawles, Olveston
£20	221	Mrs S A Pearce, Ingst
£20	297	Mrs J Dickens, Aust
£20	242	Mr J Mason, Tockington
£20	499	Revd D Bone, Tockington
£10	500	Mrs P King, Olveston
£10	431	Mrs A Harley, Alveston
£10	485	Mrs S E Lyons, Ingst

If you are not yet a member and wish to join the lottery, please telephone Andy Phillips on 01454 614890 or email andisp28@hotmail.co.uk.

As you can see from our winners this month, we are blessed with members who have moved from our area who still want to support our beloved Church. These are loyal members, some of whom were in our local lottery for years before moving out of the area. We are lucky to have members in Wales, Dorset, Cornwall & Birmingham, so thank you to them for still supporting the Lottery and the Church, and thanks to all the loyal members who allow us to continue to thrive after 27 years.



The Bristol Ensemble

The Armstrong Arts Group is pleased to present a treat for Thornbury and beyond. The concert by members of the Bristol Ensemble, Bristol's professional chamber orchestra led by violinist Roger Huckle, with guest oboe player Imogen Triner, will once again visit Thornbury with a concert of popular classical music.

The concert, sponsored by the Joan Hawkins fund at Quartet Community Foundation, takes place at Thornbury's United Reformed Church on October 16th at 7.30pm. Tickets cost £18, to include wine or juice, and are available by contacting armstrongartsgrouph Thornbury@gmail.com or 01454 850933

Natalie Gladstone BSc(Hons) Ost
OSTEOPATH

Back & neck pain, arthritic/ joint pain,
sports injuries, pre /post natal, whiplash,
cranial treatments, rehabilitation Pilates.

Tel: 07870 219 249

www.nataliegladstoneosteopath.co.uk

OLD DOWN HILL, TOCKINGTON

Easy parking. Day & evening appointments.
REGISTERED: EXPERIENCED: PROFESSIONAL



Digger and Driver Available
Out-Door Services

A. D. D. PLANT

Groundwork, Digging & Clearing
Turfing, Any outdoor work

Tel: 01454 417372

Mobile: 07866 407683



keeping your garden
beautiful...

ask us about
LAZYLAWN

- LazyLawn - superior artificial grass supply and installation - licensee for Bristol & South Wales
- landscape design and build with 25 years experience
- tree surgery
- garden makeovers
- regular garden maintenance

**Garretts Gardens
and Landscapes**

for Garretts Gardens or Landscapes
t 01454 614111 m 07974 109919
info@garrettslandscapes.co.uk
www.garrettsgardens.co.uk



The agent
for all seasons

Come rain or shine,
lisa costa estate
agents have the
experience and
knowledge to take
you smoothly through
the moving process.



lisa costa

RESIDENTIAL SALES & LETTINGS

53 High Street | Thornbury | BS35 2AR
01454 279734 | sales@lisacosta.co.uk | lisacosta.co.uk

Please note: If your property is currently on the market, the terms and conditions of your Existing agency agreement must be considered before instructing ourselves.



Two Marlwood Dads and One London Marathon

The Friends of Marlwood School's next project is a big one - the size of a couple of tennis and netball courts to be more precise. Readers of Meeting Point may recall FOMS recently helped to finance the cleaning and general sprucing up of Marlwood School's tennis and netball courts in the spring. This was Stage 1 of a two-stage project to improve tennis and netball facilities at the school. FOMS is now planning Stage 2 of the project which is to upgrade the area into a multi-sport facility.

FOMS are delighted to have the support of two Marlwood dads, who have both not only secured a place in the ballot for this year's London Marathon but have also nominated FOMS as their charity for their marathon efforts. Chris Kedward and George Evans will be running the marathon on Sunday 3rd October in London. Between them they will kick-start FOMS' fundraising efforts for Stage 2 of the court refurbishment project. This will be the first London Marathon both dads have entered.

New headteacher of Marlwood School, Seema Purewal, praised the efforts of FOMS, saying "Once again FOMS rises to the challenge of raising more funds towards upgrading the school facilities – focussing on the school tennis and netball courts. This time, dedicated dads George Evans and Chris Kedward put their best foot forward as they train hard to prepare for the London marathon on 3rd October. This is a prime example of the Marlwood community in action, and Marlwood pupils are so fortunate to have already benefitted from such an active PTA. I look forward to supporting them with this event and many more to come. Good luck. We'll be cheering you all the way!"



Chris (left) pictured with George and Seema Purewal. If you would like to donate to their fundraising efforts it would be much appreciated, the details are here:

Chris: <https://tinyurl.com/Chris-Kedward>

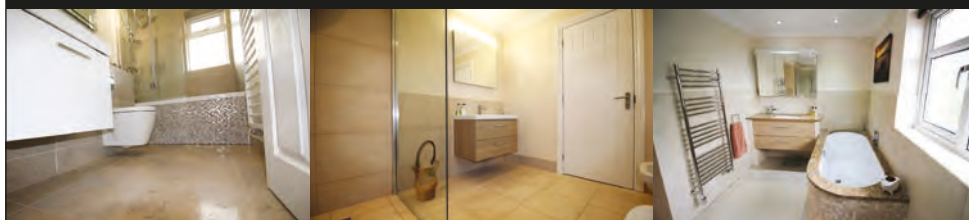
George: <https://tinyurl.com/Soilfix-George>

FOMS would like to thank them and wish them both the best of luck.

Paul Whittaker

BATHROOMS & WETROOMS

DESIGN . SUPPLY . INSTALLATION



Tel: 07879 666221 . Website: www.paulwhittakerbathrooms.co.uk

Dunkley's
Chartered Accountants
30 YEAR ANNIVERSARY

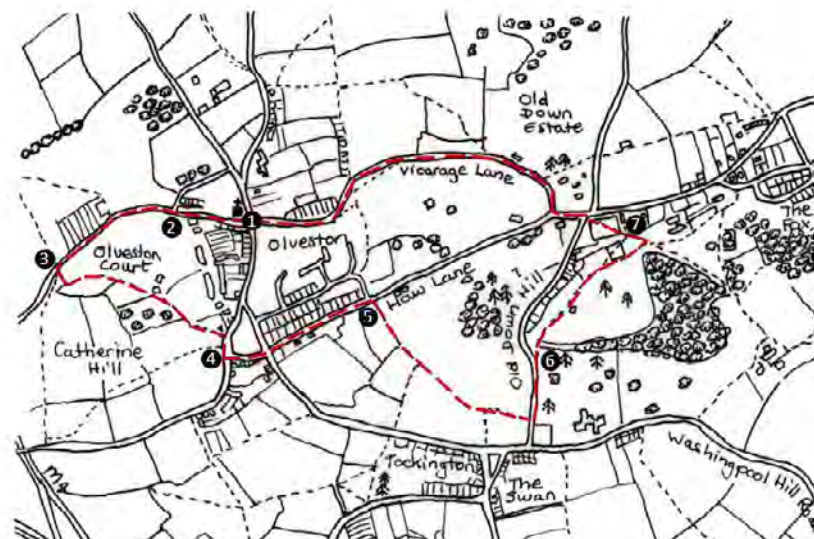
**HELPING CHARITIES AND
NOT-FOR-PROFITS
OVERCOME THEIR UNIQUE
ACCOUNTING CHALLENGES**

GET IN TOUCH TODAY TO SEE HOW WE CAN HELP YOU!

T: 01454 619900 E: ADVICE@DUNKLEYS.ACCOUNTANTS
WOODLANDS GRANGE, WOODLANDS LANE, BRADLEY STOKE, BS32 4JY

A Walk for an Autumn Day *Angela Hague*

This walk starts from St Mary's Church in Olveston and takes a path behind old Olveston Court, a former fortified manor house with a moat and battlemented walls (13C to 15C). The route affords a tantalising glimpse of the roof of the old gatehouse. The walk takes in two of the old Olveston village water pumps and the wonderful views from Tockington Hill or 'Old Down Deer Park' with the tall pine trees that form part of the Olveston Parish Logo. A recent ring count estimated that the oldest trees date to around 1880 (See January 2021 Meeting Point)! The paths cross fields that are sometimes home for cattle, so take care to keep dogs on their leads if this is the case. The walk is about 2.9 miles, with two wooden stiles and a stone one.



Start at St Mary's Church **1** From the war memorial, turn down Church Hill. Notice the water pump by Church Farm **2**. Continue straight on and along The Common. After the track bends left, there is a path signposted on the left. A kissing gate leads into a field **3**. Keep the hedge on your left and through another kissing gate on the left. To the left, after a few hundred yards, the path gives glimpses of what remains of the fortifications of Olveston Court and a view of St Mary's Church tower (at the time of writing, clad in scaffolding for the replacement of its limestone pinnacles) and to the right the fields and old orchards of Catherine Hill. Following this path, come out onto The Green. Turn right to find the second water pump **4**.

C.D GARDEN SERVICES

Need help in the garden?
Weeding £30-£120
Grass cutting and strimming small £25
medium £40 Large £60-£70
hedge cutting £30-£60
conifer £50-£80
tree trimming £30-40
tree removal £25-£70
window cleaning and seals £6-£12
Any other enquires please contact me
cain dibley
07393334947

Rebecca's Sewing Room

Seamstress all your sewing needs

01454 633905 | 07855745849
 33 Cross Hands Road, Pilning, Bristol BS35 4JB
 rebeccadunsford@hotmail.co.uk
 www.rebeccassewingroom.wordpress.com

Tavira

Algarve, Portugal
 3 Bed Apartment
*can accommodate up to 8 people

Modern 3-bedroom apartment in picturesque & historic Algarve town. 2-bathrooms including one en-suite, 2-balconies & roof terrace. Fully furnished, sleeps 6-8. Easy walking to thriving town centre. Close to railway station, golf courses & beaches. 30 minutes drive from Faro. Ideal for families or golfers. Tel: 07889 727729
 Email: anthonyar@aol.com - www.amintpadtavira.co.uk

TAVIRA - EAST ALGARVE
 EASYJET & RYANAIR
 NOW FLYING TO FARO
 FROM BRISTOL

lendology.cic **South Gloucestershire Council**

Lending with Heart and Mind

South Gloucestershire Council fund
 a not-for-profit loan scheme for homeowners
 and landlords*.

We understand the expense of maintaining your home and we work with you to take the stress out of funding repairs, improvements or adaptations.

We see you as an individual, not a credit score. Our knowledgeable team of advisers will guide you through the process of applying for a home improvement loan.

For a no-obligation assessment
 or more information visit
www.lendology.org.uk or call 01823 461099

Heatherton Park Studios, Bradford on Tone, Taunton, TA4 1EU

*subject to eligibility

Turn left at the road junction in the direction signposted 'Tockington Alveston' to reach the crossroads. Cross the road with care and continue straight ahead up Haw Lane. Just past the top of Orchard Rise, there is a signpost towards a footpath on the right. Go across the road and through a metal kissing gate 5, taking a field path to Tockington. When the path meets Old Down Hill at another kissing gate, the walk turns left uphill. Take care here, as for a few yards there is no pavement. Cross the road and join the pavement, then where the road bends left there is a wooden kissing gate ahead on the right as you start up the hill 6. Go through this gate and climb steeply up. It is stiff climb, but the views are worth it!

Coming out onto Tockington Hill, stop to admire the views, and continue behind the cricket pitch to see the old pine trees and the new ones recently planted. (An alternative to avoid a stile is to cross over the cricket pitch, using the kissing gates). In the evening there are sometimes several rabbits here – if you get close, they will hop quickly into the woodland. Turn left after the cricket pitch and go through the kissing gate into the social club car park 7. Walk diagonally across the football pitch (or skirt round it if a game is in progress). Cross the road towards the junction at the top of Foxholes Lane, bearing left to follow Haw Lane for a short distance. Turn right into Vicarage Lane. There are some good views of the Severn to the right – a good place to see the sun set. There is a choice to walk on the bridle path to the left of Vicarage Lane or to stay on the lane back to the starting point (mud and traffic dependent). The tower of St Mary's Church again becomes visible and guides us back to the centre of the village.

Over 60s Tea Room

We are very pleased to say that the Over 60s Tea Room in Thornbury High Street will now be able to welcome our customers five days a week, Monday to Friday, from 10am to 3pm. Thanks to the lovely people who have generously offered to bake for us, we are also able to sell delicious homemade cake at 50p a slice to go with your cup of tea or coffee. If you have never called in to see us before, why not pop into our attractive little tearoom at the side entrance of the Town Hall to meet your friends or to make new ones. If you want to bring your lunch with you, you are very welcome to do so.

If you can spare three hours a month and you like to meet people, why not volunteer to help us at the tearoom? If you would like to know more about what is involved phone Sandra on 01454 418690.

gsharchitects



FREE CONSULTATION

For further information please contact us on:

info@gsharchitects.co.uk
www.gsharchitects.co.uk
Almondsbury, Bristol

07780 000220

Build without planning permission

Quality design service from
concept to completion

Planning, construction drawings and
contract administration service
tailored to suit you

Domestic, Commercial,
and Sustainable Architecture.

Experienced working with
Listed Buildings

Build your dream home in your
garden

Development Advice and Appraisal

3D Visualisation Services

RIBA

Thornbury and District U3A Welcome Meeting

Monday, 25th October in St Mary's Church Hall, Eastbury Road, Thornbury,
from 3:30pm.

We are very pleased to announce that U3A groups resumed their face-to-face meetings in September. Our Groups mainly meet during the day and interests range from Archaeology to Walking. Some meet weekly, others less often and they include physical activities, crafts, board and card games, language lessons, organised visits to gardens and churches, concerts and theatre as well as purely 'educational' topics. Details of all our groups can be found on our website: www.thornburyu3a.org.uk.

Our numbers have greatly reduced due to the Covid-19 pandemic and to this end would like to invite anyone who is interested in what we are about, to come along to our Welcome Meeting on 25th October. We would love to meet you.

For further information visit our website or phone our Membership Secretary, Jackie Gitsham on 858438 or our Chairman, Norman Taylor on 418396.

New Passage
Cat Kennels

Large Runs ~ Heated Chalets
Licensed Cattery
in Pilning

Tel: 01454 632 456
www.catkennels.co.uk

jfl
Design & Planning



Home Extensions - Change of Use - Floor Plans
Full Planning & Building Regs drawing service
Almondsbury based with successful local projects

contact Julian Lowther for friendly professional advice

t:0117 2591059 julian@jfl-planning.co.uk
m:0789 0179546 www.jfl-planning.co.uk

G.V.R PITCHER & SONS

The Yard
Haw lane
Olveston
Bristol



TEL: 01454 619299
MOB: 07989 208964

Property Care & Improvements

NEAT
NOSE EVERYTHING ABOUT TECH

Tel: 07887 652358
Jed's N.E.A.T. Services
(Nose Everything About Technology)



Technology brings us together and makes life easier. But.....

What should you buy?

How does it work?

And what if anything goes wrong?

Phones / laptops / tablets / TV's / Smart home systems. I can.....

- Help you choose what's right for you
- Teach you how it works
- Fix existing 'tech' problems

HOME VISITS – VIRTUAL REMOTE ASSISTANCE – PERSONAL SHOPPING

PRICING POLICY – Please pay me what you think is fair – SIMPLE ☺

ABOUT ME

Jed Williams – I'm 16 years old, live locally & have had my own business for over 3 years
Email: me@jedwilliams.co.uk Website: myneat.co.uk Tel: 07887 652358

CAR - VAN - MINIBUS

**SELF DRIVE - LOW-COST - SHORT/LONG TERM
WIDE VEHICLE SELECTION - CONTRACT HIRE**

- Fully Comprehensive Insurance
- Extra Low Off Peak Rates
- No Hidden Charges
- Breakdown Cover
- Cars
- Minibuses
- Transits
- Sprinters
- Lutons & Tail Lifts

THORNBURY
SELF DRIVE HIRE

Established Over 20 Years

www.tsdhire.co.uk
Mob: 07768 232424
Email: info@tsdhire.co.uk

01454 414111

COOPER ROAD, THORNBURY IND. EST., THORNBURY, BRISTOL BS35 3UP

THORNBURY AUTOBODIES

Car & Commercial Body Repairs

- Crash Repair • Re-Sprays • Dent Repair
- Spray Booth Facilities • Full Body Jigging • Recovery
- Top Standard Of Work
- Fully Insured
- Insurance & Private Work

Courtesy Vehicles • Free Estimates • Over 25 Years Experience

THORNBURY
01454 419985

Email: thornburyautobodies.ps@gmail.com www.thornburyautobodies.co.uk
Cooper Road, Thornbury Industrial Estate, BS35 3UP

WJC

Plumbing & Tiling

Bathroom & Wet Room Design & Installations
Tiling • General Plumbing
Kitchen Installation • Plastering

Billy Cook
WJC Plumbing & Tiling

07748 085 920
wjcpumbing@outlook.com

Leon and Marianne Vitti

Pat Thirkettle

This month's profile is a welcome to a young couple, Leon and Marianne, who moved into the village this year. Leon comes from Swindon, chose to leave school at sixteen and worked for a pharmaceutical company for three years before joining Dick Lovett the luxury car dealership as a sales trainee. He has been with the company for twenty-five years and has worked within many of their dealerships throughout the Southwest but more recently for BMW and MINI in Bath.

Marianne was born in Bristol but moved to Shirenewton near Chepstow at a young age. After attending Filton College, she started work at the Mall the year it opened in 1998. She undertook various managerial roles with the Arcadia retail group until in 2013 she took a total career change to work for Dick Lovett at Cribbs Causeway.

Leon and Marianne met later in life through work and in 2017 joined their families, buying a house together in Park Farm, Thornbury, where they lived with their daughters Hollie, Chloe, Sofia and their dog Snoopy. After four years the house in Thornbury became too small so they sought a house in the countryside and, having found a property in Olveston during lockdown, they were able to take advantage of the Stamp Duty 'holiday' and move into the village.

Leon, Marianne and Chloe with Snoopy



Leon has a keen interest in team sports and Marianne in equestrian sports but, more importantly, they both enjoy time with the family. They work full time and have not been able to explore all the village has to offer but look forward to getting more involved in

the coming months. They both really enjoy living in Olveston and say they have lovely neighbours who have made them feel very welcome.



GARDEN MACHINERY SPECIALISTS
SALES, SERVICE AND SPARES

E-MAIL: themowerdoctor@hotmail.co.uk WEBSITE: www.themowerdoctor.net
ADDRESS: Unit 2-3 The Rearing Unit, Oldbury Lane, Oldbury-On Severn, BS35 1RF
TELEPHONE: 01454 411 701







DEALERS FOR:











PHYSIOTHERAPY
CHIROPRACTIC
PODIATRY
CHIROPODY

"Optimise your Health"

Please Enquire:

Tel: 01454 528608
Email: info@optimuscp.com
Web: optimuscp.com

49 The High Street, Thornbury, BS35 2AS

OLDOWN
TREE SURGEONS

TREE SURGERY AND HEDGE MAINTENANCE

PROFESSIONAL. QUALIFIED. FULLY INSURED.

www.oldowntrees.org

Antony Leicester 07800512408 info@oldowntrees.org



Computer support and solutions for the home and business user.

- PC/laptop repairs
- Virus removal
- Wifi/broadband issues
- Sponsors of Olveston FC

EC COMPUTERS

How can we help? Tel: 01454 281 500 Web: www.eccomputers.co.uk

IT Support/Repairs Office Equipment Print Solutions Telecoms Cyber Security Managed Services Software/Database applications

New Book by Local Author

Sheila Lally

I have worked in health and social care for over 40 years. I completed a general nurse training in the 1980s and have experience of working with older people and their families from both a health and social care perspective. I have always found working with older people rewarding and promote the view that aging can be a positive experience. My experience, and the experiences of my siblings, in caring for our mother has been the impetus for writing this book and has influenced its content.



Useful information, theories and case studies are presented to help individuals who are caring for older relatives or friends. It aims to help caregivers navigate through the often complex processes of adult care. It is a positive look at aging and discusses how older people can keep engaged within their communities and presents steps that can be taken to overcome loneliness and social isolation. The book provides a practical guide to caring for an older or vulnerable person and what help you can expect from the Government, NHS and charities. The book can be ordered online or from bookshops.

- All makes servicing and repairs
- Petrol and Diesel MOT Testing
- Tyres, Exhausts and Batteries
- Air Conditioning
- Latest Bosch On-Board Diagnostics
- Vehicle Sales



New Road, Olveston, BS35 4DX

01454 202030



YOUR PC GURU

COMPUTING FOR 'MERE' MORTALS

01454 616365

- Home visits
- Computer Repair
- Phone & Tablet setup
- Home Wireless & Broadband
- Smart Home Tech
- Complete Mac support

www.yourpcguru.co.uk
Technology Advice & Repairs

JC 4x4 Ltd SPECIALIST IN LANDROVER

SERVICE • REPAIR WORK • DIAGNOSTICS • MOTS • OTHER VEHICLES WELCOME

CALL JAMES: 01454 261067 / 07966 086447



07307 727244

Free Quotes

Domestic	Radiant heating
Commercial	Boilers
Breakdowns/ call outs	Radiators
Servicing	Plumbing
Installations	
Warm air heating	LPG, natural gas, oil



www.edgeheatingandplumbing.com info@edgeheatingandplumbing.com

Almondsbury Horse Show

On a much less than perfect summer's day, amidst sometimes monsoon conditions, Almondsbury Horse show finally hosted their 77th event. After a turbulent, trying and sometimes tragic year for people during Covid, the show was held once again at Washingpool Farm, Tockington. This wonderful site was once again, kindly lent by Mr Bruce Farr and Mr David Spratt, providing beautiful countryside views and perfect space for everyone who attended.

We were very disappointed that the dog show was unable to go ahead due to the lack of easement, and sadly the dressage/showing classes were withdrawn too, but despite the weather and the restricted classes, large numbers of competitors, spectators and supporters still attended the show, in the fabulous grounds, to enjoy a day of equestrian competition and entertainment.

The event catered for all ages and abilities with classes ranging from show jumping, to clear round jumping, the ever-popular gymkhana games, and a last minute, wonderfully welcome, inclusion of the agility/orienteering group, Wessex Le Trec. They provided demonstrations and free 'have a go' sessions throughout the day, which created a lot of interest and enjoyment. We are very grateful to them stepping in last minute and look forward to them being involved next year.

We are delighted to announce this year's sponsorship and support from NFU who contributed an incredible £1000 to support this event. We are extremely grateful, as this will enable us to keep this wonderful event going for years to come. We are also extremely grateful to Almondsbury Community Shop and NCJ Farrier service for their wonderful generosity.

A number of other local businesses support this show by sponsoring classes, advertising in the programme or by donating prizes for our raffle and silent auction and for this we are incredibly grateful. This support enables the committee to not only keep this wonderful traditional event alive, but also raises a lot of money for Great Western Air Ambulance (GWAA) and St Peter's Hospice, two amazingly deserving charities.

Many stalls were interested and planned for this year, but sadly some were unable to attend due to the Covid situation. We hope to build up the number of stalls in the coming years. GWAA and St Peter's Hospice advertised the work they do by bringing along stands and next year, hopefully, Avon Riding for the Disabled (RDA) will be working with the show to create an RDA class in the main ring.

We were delighted to have two silent auction prizes, very kindly provided by local support, Jolie Fleurs donating a truly wonderful bouquet of beautiful flowers, and a beautiful cake in suitable equine style from a local donator.



Dave Webb

Painter - Decorator

07809 869149

01454 201640

*Reliable, professional, friendly service.
Please ask for your free quotation*



Squire Sweep

A chimney sweep service from
Michael Squire

Tel: 07504 253 467

Email: squiresweep@gmail.com

Visit: www.squiresweep.co.uk

Even though the weather 'dampened' some things, people's appetites were not, and the refreshments went down a treat. The burgers and hot dogs, provided by Perry's of Alveston were consumed in large numbers, selling out by the end of the day. Ice creams are always a treat, and the newly introduced bar did well. A big thank you to Frampton Sailing Club for their loan of the wonderful marquee to house the bar and seating.

This was a truly great day for all concerned and it was so lovely to see people out and about once again, having great fun and catching up with friends and family in a friendly environment. The committee are delighted to announce that they have raised around £4000 for the charities. They hope to be even bigger and better next year and encourage all local people to come along and support this event.

**Save the date: Next year's show Sunday July 3rd 2022.*

Olveston Parish Hall



This is a reminder that the 2021 Autumn Supper will be held on Saturday 9th October - 7.00pm for 7.30pm.

Prices are being held at the 2019 amount of £12.50 or £75 for a table of 6. This will include a two-course supper with coffee and post supper entertainment.

We are so pleased to be able to hold this very popular annual event. To reserve a place or a table please contact Pat Savage:
patsavage1948@icloud.com or 07703281625

MEDWAY DESIGNS Sewing & Alterations

- Bridal Wear •Alterations
- Evening Wear •Day Wear
- Soft Furnishings & re-upholstery

Ask about sewing lessons

Delivery & Collection Service Available

Lois Coulson
0117 969 1798 /
07950 396064

loiscoulson@ymail.com

14 Watch Elm Close, Bradley Stoke

Call now for a friendly personal service

Cookin' On Gas Ltd



**Repairs & Sales of all
domestic appliances:**



Gas & Electric Cookers and Hobs
Washing Machines, Dishwashers
Tumble Dryers

www.cookinongas.co.uk
enquires@cookinongasltd.co.uk

Matt Cole
1 Olive Gardens Alveston
Tel 01454 851545
Mob 07715 705670



XL Plumbing & Heating Solutions Ltd

- General Plumbing
- Boiler Installation, Servicing & Maintenance
- Gas Safety Certificates
- Bathroom Installation & Tiling

Contact Mark Mob: 07738 726803
Email: xlplumbing@hotmail.co.uk
Tel: 01454 549008
Web: www.xlplumbing.co.uk



MEMORIALS &
MONUMENTS



Supplied & Erected
NEIL VIZARD
01454 419108

BAMFIELD
TREE SERVICES
TREE SURGERY AND LOGS



www.bamfieldtreeservices.co.uk
07761 810483

prestige
event equipment hire

Supplying you with the best equipment to succeed!
CELEBRATIONS & CORPORATE EVENTS

CUTLERY, CHINA, GLASSWARE, LINEN, REFRIGERATION,
COOKING EQUIPMENT, BARBEQUES, FURNITURE & MORE

Fast and Efficient, we stock a wide variety of
equipment covering anything from
WEDDINGS to FESTIVALS.

For a FREE quote please call: 01179613170
info@prestigecateringhire.co.uk
www.prestigecatering.co.uk

HK **Harkell**
Building services

- MAINTENANCE
- BRICKWORK
- ROOFING
- FENCING
- REPAIRS
- PLASTERING
- CARPENTRY
- PATIO ETC

FOR A FREE QUOTATION PLEASE CALL
TEL: 01454 617110 MOBILE: 0787 6682546

Window Cleaning

07976 694744 - 0117 9085794



M. Gray Window Cleaning

Family run business for over 25 years
experience working in the Almondsbury,
Olveston, Aust areas - and nearby.

Email: mgwc1@hotmail.com

From the Registers of St Mary's, Olveston

June 29th

Funeral of Trevor Anderson

Yours Faithfully

Revd. C. Neil Mobbs
Oasis Church

I wonder if like me you watch Gardener's World on BBC2 on Friday evenings? It is a programme I look forward to because I love seeing well-presented gardens of different types. I remember when our children were young, they, my wife, her mother, and I used to visit gardens open to the public on Saturday or Sunday afternoons. It was a beautiful and healing experience. The one thing that disappoints me is that we do not give credit to our wonderful Creator God who is behind such splendour and beauty in creation.

A verse in the Bible, Genesis, chapter 8 verse 22 reads:

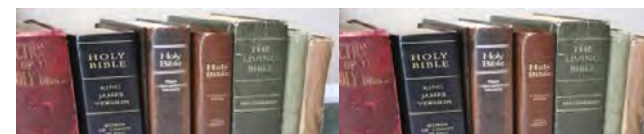
"As long as the earth endures,
Seed time and harvest,
Cold and heat,
Summer and winter, day and night,
Will never cease."

God has kept His promise until now.

In Romans, chapter 1 verse 20, St. Paul says God's power and His divine nature have been clearly seen in His creation. One day we shall have the privilege of going to heaven. (If we trust in Jesus as our friend and Saviour).

It says in 1 Corinthians, chapter 2 verse 9,
"No eye has seen, no ear has heard, no mind has conceived, what God has prepared for those who love Him"

I look forward to seeing you there, to be thrilled with even greater beauty and splendour. God bless you.



greenside
Landscaping

The Cottage, Hortham Lane,
Almondsbury, Bristol BS32 4JP

Greenside Landscaping can offer a wide range of services including:

**Artificial Grass ~ Brick & Block Driveways
Decking ~ Fencing & Gates
Garden Design ~ Patios & Paths
Planting ~ Ponds & Water Features
Turfing & Seeding ~ Walling**

We pride ourselves on flexibility and we strive to meet our client's requirements and budgets.

www.greenside-landscaping.co.uk
Tel: 01454 250648 Mob: 07980 384321
Email: paulbradburn@hotmail.com

MORAS
Decorating Services

ANDREW MORAS
Quality Painting and Decorating Services

For your **FREE** no obligation quote contact Andrew:

07962069036

✉ andrew@morasdecorating.co.uk
www.morasdecorating.co.uk

**Your advert could be
here and reaching
1,500 households**

**Contact Bernard
meetingpointadvertising@
gmail.com**

BEDLAM
www.bedlambeds.com

- Free local delivery
- Free assembly
- Free disposal of your bed

Divans / Mattresses / Ottoman & Wall beds /
Memory foam & latex mattresses / Beds made
to measure / Pine, Metal & leather beds

**Open Tuesday to Friday: 9am-5pm
Saturday: 10am-3pm**

Visit our showroom: The Old Post Office
26a Gloucester Road, Rudgeway, Bristol,
BS35 3RY (by the speed camera)

01454 617 277 or 07887 853479

Thornbury Stairlifts
SALES SERVICING & REPAIRS



- New & Re-conditioned Stairlifts & Warranty
- Removals & Relocations
- Free Surveys & Quotes – No Obligation
- Rentals for Straight Stairs

Independent, Professional & Friendly Advice
Over 24 years practical experience



Independent Stairlift Specialist
01454 413748 07833 318722
www.thornburystairlifts.co.uk

Church News

ST MARY THE VIRGIN, OLVESTON

Oct 3	9.30am 6pm	Holy Communion Evensong	Rev David Bone Trevor Cook
Oct 10	9.30am 6pm	Matins BCP Holy Communion	Rev David Moss Rev Ann Lloyd
Oct 17	9.30am 6pm	Morning Prayer Holy Communion BCP	P Harrod & J McBride Rev David Moss
Oct 24	9.30am 6pm	Holy Communion Evening Prayer	Rev Ann Lloyd Janet McBride
Oct 31	9.30am 6pm	Holy Communion Service of Thanksgiving for the Departed	Rev David Moss Revs David Moss & Ann Lloyd

Also, every Wednesday at 10am, Holy Communion.

Online services will continue at www.stmarysolveston.org.uk.

Also visit *Revs Rural* on YouTube, every week.

Contact: Rev David Moss, 01454 415190; email: mossds@gmail.com

CHAPELRY OF ST JOHN, AUST

Oct 10	10am	Morning Prayer	Trevor Cook
Oct 24	10am	Holy Communion	Rev David Bone

Contact: Trevor Cook, 01454 618442

Church Wardens: Jenn Dickens 632312 & Clive Roberts 632238

ST MARY DE MALMESBURY, LITTLETON-ON-SEVERN

Oct 10	9am	Morning Prayer	Mrs Tracey Black
Oct 24	9am	Holy Communion	Mrs Tracey Black

Contacts: Tracey Black 417660 & Tim Pyper 416422 /07802 419451

ST JOHN THE EVANGELIST, ELBERTON

Oct 10	9am	Morning Prayer	Mrs Judith Heybyrne
Oct 24	9am	Holy Communion	Mrs Judith Heybyrne

Contacts: Judith Heybyrne 616725 and John Gunnery 413225

OLVESTON AND TOCKINGTON METHODIST CHURCH

Oct 3	10am	Tock Ch	Harvest Festival led by Rev Simon Edwards
Oct 10	10am	Olv Ch	Morning Worship led by Mrs Sarah James
Oct 17	10am	Tock Ch	Morning Worship led by Rev David Hardy
Oct 24	10am	Olv Ch	Morning Worship with Holy Communion led by Rev Simon Edwards
Oct 31	10am	Tock Ch	Morning Worship led by Mrs Rosalie Doyle

Contact: Rev Simon Edwards 418176, email: simon.edwards@methodist.org.uk

THE VINE House of Prayer, Pilning Street, Awkley BS35 4HL

At present, meeting at 11am every Sunday.

Contacts: Mike and Barbara Matthews, tel. 07512 917229 or email: thevine_awkley@hotmail.com

THE OASIS CHURCH, OLD DOWN

Services at 6.30pm every Sunday. All are welcome.

Contacts: Jenny Parfitt jennyparfitt@ymail.com & Sue Tett stett56@hotmail.co.uk

AUST EVANGELICAL and LITTLETON EVANGELICAL CHURCHES

Contact: Danny Bamfield 01454 419324 email danny@thebamfields.co.uk

RC CHURCH OF CHRIST THE KING, Thornbury -

Mass on Sundays at 9.30 and 10.30am

Contact: 01454 412223 www.ctk-thornbury.org.uk

SOCIETY OF FRIENDS (QUAKERS), Thornbury

Contact: Brian Hawkins, hawkinsb863@gmail.com 01454 854867

Events in October

Monday 4 October, **Monday Movies at St Mary's**, 7.30pm

Saturday 9 October **Autumn Supper at the Parish Hall**

Monday 11 October, **Severn Vale Flower Club**, 2pm, St Mary's Church Hall Thornbury.

Monday 18 October, **Monday Movies at St Mary's**, 7.30pm

Coffee Morning every Tuesday at 10.30 at Daldry Gardens lounge.

Coffee Shop every Thursday at St Mary's Church Olveston, 9-12 in Term Time and 10-12 in school holidays.



Contact details for any clubs or organisations in the Meeting Point area can be found in the Meeting Point Directory on the community website: www.olvostonandaust.com. If you would like to update your organisation's details, please email: meetingpointsecretary@olvostonandaust.com

Advertisements Neither Meeting Point, its editor, nor management committee accept any responsibility or give any guarantee in case of any dispute or claim as to quality, condition or delivery of commodities or services advertised in this magazine. It is not to be taken that publication implies recommendation. It is always advisable to check prices when ordering goods or services.

Views expressed by contributors are not necessarily those of the editor or Meeting Point magazine.

Copyright Meeting Point 2021. Copyright remains with the author(s) and Meeting Point. No part of this publication may be reproduced or transmitted in any form without the prior permission of the copyright owners.

Meeting Point is printed by Motion Printing Ltd.

HOLIDAY LET 6 BERTH HOLIDAY HOME

Central Heating . Double-Glazed
Private Beach . Fishing Trips . Cliff Walks
Restaurant . Bar . Live Entertainment
Indoor Pool . Kids Club
Shop . Cafe . Takeaway

OTTERTON . BUDLEIGH SALTERTON . EX9 7BX

(2 Bed, 1 Ensuite)

Tony Gardner
07889 727 729



OLVESTON STORES & POST OFFICE

NOW STOCKING - JON THORNER'S FULL RANGE

NEW COSTA EXPRESS MACHINE IN STORE

HOME DELIVERIES (NO MINIMUM SPEND)

NEWSPAPERS DELIVERED (SMALL CHARGE)

PAYZONE FACILITY FOR BILL PAYMENTS, GAS, AND ELECTRIC TOP UPS

OUR INSTORE POST OFFICE OFFERS A WIDE RANGE OF SERVICES

CAR TAX
BILL PAYMENTS
CURRENCY ORDERS
POSTAGE
A RANGE OF INSURANCES
&
MUCH MORE

01454 612269

olvestonstores@btconnect.com

BONDS *of* THORNBURY

INDEPENDENT ESTATE AGENTS



A truly local independent estate agency with over 40 years of experience and with unrivalled knowledge of the property market within Thornbury and South Gloucestershire.
Our caring sales business is based on our reputation, honesty and integrity.

Please contact: Rowena Moncrieffe
for further details...

14 The Plain, Thornbury

Tel No: 01454 858007

www.bondsofthornbury.co.uk

enquiries@bondsofthornbury.co.uk

