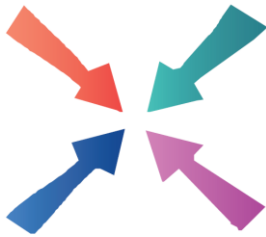


Meeting Point



October 2018



Meeting Point

Volume 43, Number 1, October 2018

The community magazine for the villages of Olveston, Tockington, Old Down, Lower Hazel, Awkley, Ingst, Aust, Elberton and Littleton upon Severn

EDITOR:

Marelin Orr-Ewing
Courtlands
Olveston
Bristol BS35 4DU
Tel: 01454 610081
meetingpointeditor@gmail.com

ASSISTANT EDITOR:

Angela Williams
Ashlea
Haw Lane
Olveston
Bristol BS35 4EG
Tel 01454 612850
meetingpointmagazine@gmail.com

ADVERTISING:

Nigel Dawes
Cromwell House
The Street,
Olveston
Bristol BS35 4DR
Tel: 01454 201558
julie.dawes@tiscali.co.uk

Publication date
1st of each month

Material for November 2018
to the Editor or Deputy Editor
by 8th October 2018.

From the Editor

Ever since I spotted a framed newspaper article on the wall of the pub at Littleton on Severn, I have been intrigued by the whale that was washed up on the river bank nearby. We often take visitors to 'Whale Wharf' and tell them what we know of the story. I hope you will enjoy – as I did - Nick Fear's fascinating article about this whale, and others, that have been stranded on this local stretch of the river.

It is good to see that Monday Movies are back at St. Mary's after their well-deserved summer break. Other regular October events are also featured. For example, there's a magic and music evening being put on by OPTA (the Twinning Association), well worth attending, you could go and support the Fun Run and, if running is not your 'thing', you could always exercise your brain cells at the Church Quiz.

We have a full-page article this month from Olveston and Tockington W.I. which celebrated its centenary last month. I didn't make it to the anniversary tea, but I did hear the bells ring out on September 3rd. Wonderful!

Marelin

The cover is by Lisa Helyar

Meeting Point Founded in 1976 by the Anglican and Methodist churches in Olveston, near Bristol

Meeting Point magazine and Meeting Point Directory are online at the Community Website: www.olvostonandaust.com

News from St Mary's

Debbie Harries



Quiz Night

Our next quiz is on Saturday October 20th at 7.30pm. Tickets £5. Corned Beef Hash is on the menu! Please contact Debbie on oboe-debbie@live.co.uk to book your team. There is a maximum of 6 per team. We look forward to seeing you there for another good evening.

Harvest Festival

This is on Sunday October 7th. Apologies for the wrong date published last month. The service will be at 10.30am followed by a pork hotpot lunch along with children's entertainment! A warm welcome to all.

Sunday October 28th 10am

We are very pleased to welcome David and Olivia Gatehouse, from OMF (Overseas Missionary Fellowship) International, who are speaking at our 10am service. They have been serving in China for nearly twenty years and their main ministry focus has been to unreached ethnic minorities. They will give a short mission report accompanied by a PowerPoint presentation, plus a display regarding their work in China

At the end of the service they are very happy to answer any questions and share more about what they do. There will also be an opportunity to make a donation to support their work.

From the Registers of St. Mary's Olveston

28th August Funeral Service for Pamela Sylvia Fox

2nd September Baptism of Genevieve Kate, daughter of Andrew John and Fiona Claire Dunkley

Litter Pick

Rod Williams (612850)

There will be a litter pick on Saturday 6th October.

Please meet at the Parish Hall car park at 1pm.



**BAGUETTE
MAGIQUE**

**AN EVENING OF MAGIC AND MUSIC
FOR THE WHOLE FAMILY**

Tickets £8 per adult, £4 per child

Tickets in advance only
available from Lucy Shrimpton 07752 942284

**Friday 5th October 6:30pm to 9pm-ish
at Parish Hall in Tockington**

BAR
FOOD INCLUDED
ICE-CREAM
PARLOUR

ORGANISED BY OLVESTON PARISH TWINNING ASSOCIATION



Taking the Train to Bristol

Rod Williams

We travelled into Bristol from Severn Beach the other day. I wonder how many people realise how good this service is?

Super trains and extremely cheap, just £3 return to Temple Meads for a walk down to the Harbourside or £2 to Clifton Down. Trains are every 2 hours, at approximately ten minutes to even numbered hours.

You can find exact details on the Great Western Railway website.

Tea and Chat

Do you find it difficult to get out and socialise? Would you like to meet other people for tea and cake once a month? Transport is provided and it's all free.

The October Tea and Chat will be on Friday October 26th at 2.30pm at Westmead, Aust Road, Olveston. BS35 4DE

For details or to request transport if necessary please telephone:

Lynn 01454 612201 or Lesley 01454 613804.

Olveston Fun Run October 7th

There is a 1km run for younger children around the school grounds plus a single lap 5km off-road course along the footpaths and bridleways of Olveston. Each participant who finishes will receive a medal. Entry Forms and details of entry fees available from the Olveston School Office or by emailing olvestonfunrun@gmail.com

The 1km run starts at 10.00am and the 5km run starts at 10.30am Registration is from 9.00am at the school.

We also need volunteers to be Marshalls, First Aiders and to help with refreshments so, if you can help, please contact Charlotte on 07780886342 or email olvestonfunrun@gmail.com

Olveston and Tockington Methodist Church

A message from the new Methodist Minister, Rev. Simon Edwards.

"September is always a time of change in the life of the church, with the start of a new year which brings challenges, opportunities, joys and sorrows. This September was certainly a time of change for my family and me, as we moved to this area from Trowbridge.

Perhaps you would like to know a little about me? I grew up in Liverpool in a Methodist family, with my twin brother and older sister. I met Hannah, my wife, when we were both students at Cliff College. Since then I have worked as a youth worker for a Methodist Circuit in Liverpool, in a menswear shop in Dover and as a Family and Children's worker in the Dover and Deal Methodist Circuit. Hannah and I have been married for fifteen years and have lived in six different houses during our marriage! We have four children (and another on the way), Naomi is four and is very cheeky, Lydia is six; both girls have a gift of looking at me in a particular way which will always get them what they want! Thomas is nine and loves to ask questions, Ben is almost twelve and wants to know how everything works."

I'm sure we will hear more from Simon in due course.

Tom Kilminster

Pat Thirkettle

This month we are pleased to profile another local young man running his own business. Tom Kilminster has lived in the village since he was four and went to Olveston Primary School and then on to Marlwood School. He has always been a regular at the gym and was very keen on fitness training which he



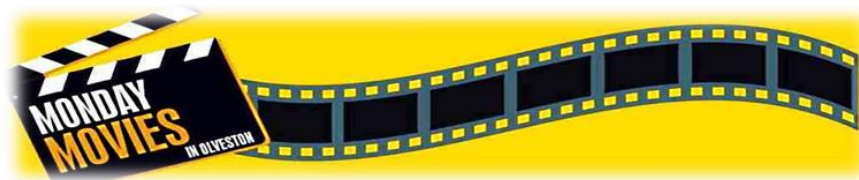
taught after leaving school, as well as doing a variety of jobs from working in a menswear shop in the Mall to kitchen and bathroom tiling.

However, he really wanted to work outdoors as his love of gardening stems from pottering around with his Granddad on their allotment in Little Stoke, which led him to work at Old Down Country Park for five years. Initially he helped with the restoration of the garden around the house, which had become much neglected and is now restored to its former glory. The walled kitchen garden also needed much attention and is now a valuable attraction for the Country Park due to the hard work of Tom and his colleagues. He learnt many skills on the job such as the general maintenance of gardening as well as doing several courses on the use of chain saws, hedges cutters and strimmers.

Eventually he felt he had the skills to work on his own and four and a half years ago started his business Serene Green. He never advertised, work came from word of mouth and referrals mostly in the village, but he has also ventured out to central Bristol and Wales - so this is his first publicity. He particularly likes doing hard landscaping and creating small gardens in collaboration with the owners. He really enjoys being outside, interacting with people and taking pride in creating a nice outdoor space. He has done some work for the Parish Council and it pleases him to be able to help the local community.

Tom has been heavily involved with Olveston Football Club, he managed both reserve and first teams for a total of five years which has seen the club win several titles, while also helping to maintain the pitch and delivering training sessions. This year he stood down in order to concentrate on his business.

Tom's long-term ambitions are to take a garden design course, to expand to have a team, (at present he has two who help out on an ad hoc basis), and to continue delivering good quality work. Tom can be contacted on *07738442738*.



AUTUMN PROGRAMME BEGINS

Trevor Anderson

Refreshed after our summer break, we begin our autumn Programme this month. Our two October films are described below, and leaflets are now available giving further details of these plus those for the next two months. Movie Club members will be receiving theirs by email and paper copies are available to pick up from just inside the church door.

Everyone is welcome (you don't need to be a Movie Club member), admission is free and there is no need to book.

MONDAY MOVIES (7.30pm on the 1st and 3rd Mondays of each month)

Mon 1 Oct: Comfort food for fans of period drama. A writer forms an unexpected bond with the residents of Guernsey when she decides to write about the book club they formed during the wartime Nazi occupation of the island. From the producers of *The Best Exotic Marigold Hotel* and with an all-star cast comes a compelling romantic drama with an intriguing mystery at its heart. (2018, 2h 4m, Cert 12)

Mon 15 Oct: More 'lovely' than ever! This breath-taking new DVD restoration has been released to celebrate the 50th Anniversary of the beloved adaptation of the famous Broadway musical. Starring Audrey Hepburn as a London flower girl and Rex Harrison as a snobbish professor, this musical extravaganza won eight academy Awards. (1964, 2h 40m, Cert U)

CHILDREN'S MOVIE CLUB (10.00am most Mondays in the school hols)

Would you like to join our CMC team? We urgently need more adults to keep the Club going. If you think you might like to help, please contact Martin Gibson on mrtngibs@aol.com

All the films are shown in **St Mary's Church, Olveston** and doors open 30 minutes before the start. Refreshments are available at all the shows, plus licensed bar in the evenings and popcorn and soft drinks in the mornings.



We make no charge for entry, but we do value and appreciate a small **donation** towards church running costs if you have enjoyed the show.

For copyright reasons we can't name the films here, but if you join the Movie Club we'll send you titles and full details by email. It costs nothing to join – just email me at trevoranderson@btinternet.com

Craft and Chat

Craft Sessions are re-starting for Autumn on Fridays in Littleton Village Hall.

We have a friendly group of people who enjoy working together and chatting. We have knitted small easy jumpers for children in Gambia and small hats for babies in Southmead hospital. We have space for more people so please come and join us.

If knitting isn't your thing, please bring something else to do, or just come for a chat and a coffee/tea. We have some ideas for simple hand sewing projects so there is something for everyone. If you would like to learn to knit we can help you and provide needles and wool - the jumpers we knit are an ideal first project!

All ages welcome, it would be lovely to have some children coming along.

Sessions are on the second and fourth Fridays of each month. The first session is October 26th, from 10am -12 noon , then November 9th and 23rd and December 14th.

For more information contact Janet Harrison 07562 212435 or warren@townsendhouse.me.uk

Teaching Trees in Old Down.

As Autumn draws on, the woodland is full of fruits and nuts, colours and animal activity. A fantastic time to spend some time learning outdoors.

Royal Forestry Society's Teaching Trees project works with primary schools and landowners, offering educational visits to local woodlands. In Old Down, Peter and Tessa offer such an opportunity to primary school children.



"We have lived in our small woodland for 40 years, where we, our children and grandchildren have had fun. So, we have been delighted to welcome children to experience woodland for themselves. We have been pleased that they have enjoyed it, leaving it tidy, and look forward to seeing them again soon"

Our curriculum linked sessions give children the opportunity to learn about trees, wildlife and forestry in a fun and hands-on way. Through their experiences they gain an appreciation of woodlands' value for the environment, timber production and enjoyment. We welcome all primary schools, by prior arrangement, and even have a pot of funding that can go towards the cost of transport.

To involve your primary school in Teaching Trees contact georgia.spooner@teachingtrees.org.uk or go to <http://www.rfs.org.uk/learning> and follow the Teaching Trees links. Alternatively, follow us on Facebook <https://www.facebook.com/RFSTeachingTreesGloucestershire/>

CRUK Wine Tasting Challenge

Fancy an enjoyable evening of wine tasting that will also, in a fun way, test your knowledge of wines?

Thornbury and District Cancer Research UK Committee are holding just that on Saturday 13th October in St Mary's Church Hall, Eastbury Road, Thornbury at 7.15pm for a 7.30pm start.

Tickets are £15 per person which includes the tasting of different wines together with cheese, pate and nibbles. Do come and join us all for what promises to be an evening of fun whilst raising much needed funds for Cancer Research UK.

For tickets please call Jennie on 01454 415856 or alternatively contact any of our Committee Members that you may know. Don't delay or all the tickets will be gone!

CRUK Autumn Fair

Thornbury and District Cancer Research UK Autumn Fair is being held at St. Helen's Primary School, Greenhill Road, Alveston BS35 2QX on Saturday October 20th, from 10am to 12.30pm. Entry £3 and includes coffee/tea and cake.

Do drop in and get your Christmas cards and gifts early. We will have an abundance of home produce including jams, marmalade, chutneys, fruit pies, puddings, cakes and savouries plus jewellery, stationary, books, craft items and a whole lot more including a raffle.

All proceeds go to Cancer Research UK to help beat cancer!

For further information, please contact Pam on 01454 416941

Olveston and Tockington W.I.

Vicki Townsend

This has been a busy time for the members, being the celebration of 100 years of Olveston and Tockington W.I. August saw the Annual Dinner at the Anchor Inn at Oldbury on Severn, a delicious meal was enjoyed by all. On 3rd September the bells of St. Mary's Church were rung at 7pm, to mark the date and time that the first meeting began 100 years ago. The Centenary



Afternoon Tea was held on 8th September at Olveston Parish Hall, the event was hugely successful. Over 100 visitors were treated to traditional W.I. hospitality, a tasty choice of sandwiches and cakes, made by members with endless tea and coffee available. Kim Prewett, our

retiring President, had assembled an extensive historical display from the archives. Kim cut the anniversary cake baked by The Crusty Loaf, reminding everyone that the W.I. had met in the Parish Hall throughout its 100 years. Issy Phillips masterminded a craft exhibition and Pat King organised the Kiddies Corner, with drawing, games and children's treats. Thanks to all the members who provided the food together with time setting up and clearing the hall and a very special thanks to all those who attended, to make this a memorable event, which exceeded all our expectations.

At the meeting on September 11th we were treated to an entertaining talk by Ruth Mitchell, a makeup artist and model maker, who has worked on television and film projects, including time spent with Aardman Productions. Ruth now lectures on stage make up at Filton College and she showed us some amazing slides of work produced by her students.

Our meeting on October 9th at 7.30pm, will see Jane Leslie telling us about her experience of entering the female equivalent of the Iron Man contest. Come and join us as we enter our 101st year.

Friends of St. Mary's

The prize winners in the August draw, held on 6th September 2018 at the Friends' Committee Meeting were:

<u>Amount</u>	<u>Number</u>	<u>Name</u>
£150	605	Mrs M Lewis, Olveston
£75	389	Mrs S Shaw, Olveston
£25	316	Mrs Y Williams, Olveston
£25	227	Mrs P Halfyard, Edgbaston
£25	354	Mrs J Robbins, Olveston
£20	321	A M Bennett, Alveston
£20	599	Miss J Davies, Olveston
£20	563	Mr B Brown, Olveston
£10	328	Mr A Goodbrook, Olveston
£10	383	Mr R Bisiker, Tockington
£10	255	F M Riley, Bitton
£10	361	Mr & Mrs T Roper, Tockington

If you are not yet a member and wish to join the lottery, please telephone Andy Phillips on 01454 614890.

St. Peter's Hospice - Tea and Cake

St Peters Hospice Severnside Support Group would be delighted to welcome you to Tea and Cake in Rockhampton Village Hall on Sunday 14th October at 2.30p.m.

Homemade cake stall, Books, Crafts, Raffle, Christmas cards. Entrance £3.00 to include tea/coffee and cake. Please come along and support St Peter's, your local Hospice.

Thornbury Town Trust

An interesting vacancy has arisen for an enthusiastic self- motivated person to become clerk to the Thornbury Town Trust, a charity supporting local good causes. It is for a twelve-hour week working from home

An understanding of the new GDPR regulations would be preferable.

Closing date for applications is 19th October, with interviews to be held on 1st November.

To obtain a job description contact Clive Parkinson 23 Church Road Thornbury BS35 1EL or Margaret Powell 07790074448

Olveston Parish Allotments and Gardeners Association AGM

Our AGM will be held on Friday 2nd November in Olveston Parish Hall

Doors open at 7pm for AGM at 7.30pm.

Our speaker will be Reg Maule, gardening expert and local radio presenter.

All are welcome. There will be a charge of £5 for non-members.

It is necessary for all who wish to attend to let us know, so we can plan seating and cater for light refreshments. Telephone 619289 or email olveston.allotments@gmail.com

South Gloucestershire Women's Luncheon Club

Joyce Davies

During the autumn/winter months (October – March) the Luncheon Club meets at Almondsbury Old School Hall. We have an excellent caterer who provides a two-course lunch, with tea or coffee to follow, for £12.50. Lunch is followed by a speaker or entertainer and a variety of interests is covered.

Membership is £17 for the season and if you are interested in coming to the first lunch on October 11th please contact Audrey Rosser 01454 620176

The Royal British Legion Women's Section - Olveston Branch

Sue Harris

We took advantage of the glorious weather in July and our chairman Rose hosted a BBQ at Tomorosa for members and guests. In August we returned to our regular monthly meeting and welcomed Phil Savage who entertained us with a presentation on Antarctica. Our meeting on the 4th September was a Bingo Evening and our next meeting, on October 2nd, will be about flower arranging.

Alveston Gardens Association



Out and About with AGA.

A Presentation by Dr George Hargreaves

7.30pm in Alveston Jubilee Hall, Monday 1st Oct.

All welcome – Visitors (£3)

Full programme on www.alveston.org

Aust Parish Council Matters

Tim Pyper (austparishcouncil@googlemail.com)

Vacancy for clerk

As promised in the last issue, the advertisement for my successor was published in the middle of September. The closing date for applications will be 12th October. If anyone would be interested, you can find the advertisement on the Aust Parish Council pages of the Olveston website. I would be happy to answer any questions.

Planning applications

At the last meeting in September, there were no new planning applications to consider, a first in my time as clerk. However, things are about to get busier. Some months ago, the owner of Whale Wharf submitted an application to convert the buildings to general office use. South Gloucestershire planners say that he implemented his educational facility consent, as a result of which, the old office use, limited to research and development, has lapsed. The developer argues otherwise.

The traffic officer has written a report based on the educational use, which would mean a much smaller volume of traffic. He has recommended refusal. The main report by the planners is expected within the next few weeks and is expected to be a refusal unless the application is called to the committee.

Funnily enough, South Gloucestershire council has received some public comments supporting the application – surprisingly, mainly from the Box area, where it is thought the developer lives.

Greenacres

This is the site between the A403 and the Aust roundabout, that the owner tried some years ago to use for a Travellers' site. It has been used for waste disposal in recent years – supposedly all for inert waste – but in recent months

a lot of rubbish, old cars, etc. has been brought in and some fires started. South Gloucestershire has taken enforcement action against the owner and the site should be clear by the end of October, if the notices are obeyed. It would be very useful if anyone were able to get a photograph of anyone bringing rubbish or waste only the site or could note when a fire is started. Any information to me, please.

'Into the Woods' - TMTG'S 50th Anniversary Musical.

Rehearsals are in full swing for Thornbury Musical Theatre Group's next show, the fairy tale musical 'Into the Woods'. In our 50th Anniversary year we have opted to perform something a little different, giving our audiences a chance to see a musical which is rarely seen on the amateur stage

'Be careful what you wish for' seems to be the ongoing theme in this story which follows the Baker and his wife who wish to have a child, Cinderella who wishes to go the King's Festival, and Jack who wishes his cow would give some milk. When the Baker and his wife are visited by the neighbourhood witch, who reveals to them that she placed a curse on their family, the two set off on a journey into the woods to reverse the curse. Along the way, we meet Little Red, who is trying to visit her grandmother, the Wolf who loves tasty little girls, the Witch's daughter Rapunzel, and the Princes chasing after their loves. When it appears that everyone has got their wish and will seemingly live happily ever after, Jack's beanstalk brings them a visit from an angry Giant and we see how the consequences of their actions haunt them in disastrous ways. The community must come together to save each other and their kingdom, but sacrifices must be made. There are many twists and turns along the way, sometimes funny, sometimes sad, revealing the darker side to fairy tales. Consequently, the show is suitable for children of Key Stage 2 and older.

Performances are at the Armstrong Hall in Thornbury from Wednesday 24th to Saturday 27th October at 7.30pm nightly, including a matinée on Saturday at 2.30pm.

Tickets from £10.50. Contact the Box Office on 07516 270140 or book online at www.tmtg.org.uk. Tickets are also available at Lisa Costa Residential Sales and Lettings at 53 High Street, Thornbury. The staff are big fans of TMTG and always delighted to meet our audience members but remember it's a very busy office so please be patient if they're not available the first time you call.

For more information about 'Into the Woods' go to our website: www.tmtg.org.uk or follow us on Facebook.

Wild Boar

Trevor Cook

I was returning from tea at the Speech House, in the Forest of Dean, with my Mum one Sunday afternoon in Spring, when we chanced upon a line of stopped cars and realised that they were watching a small herd of wild boar, rooting along the roadside. I say herd, but I understand that the collective noun is a 'sound'. Anyway the 'sound' didn't appear to be at all concerned by the watching public and sauntered unconcernedly along the road.



They have become a regular sight and quite a pest in the Forest of Dean, for they are reported to have desecrated graveyards, dug up sports pitches and caused damage to many of the roadside verges. But

surely they wouldn't come here would they? One would have hoped that the width and depth of the River Severn would contain them. However, according to the website www.britishwildboar.org.uk sightings have been reported in the centre of Gloucester City and in the Cotswolds. They seem to have crossed the river and are moving slowly south through the rest of Gloucestershire.

The nearest sighting recorded in the Meeting Point area is near the village of Tresham, out past Wotton under Edge. At that rate it is just possible that sooner or later one of us will be surprised by the sight of a wild pig roaming through our woods or in the fields - if we have not spotted some already!

What to do if you do chance upon them? The advice is, firstly, that they will be more afraid of you rather than the other way around. However, you should not approach them and if possible leave the area by the same route you approached or make a detour, giving the animals a wide berth. If you see wild boar and you have a dog off the lead, call the dog to heel and put it on a lead immediately. Although our physical fears may be allayed it is the damage that they cause to the countryside that distresses those who live with wild boar in their backyard.

Annual Donkey Nativity Carol Concert at Rudgeway

Although Christmas is some time off, tickets are now available for the annual Donkey Nativity. Last year there were six concerts, and they were all sold out! This year there will be a choice of 12 dates, from Monday December 3rd to Saturday December 15th.

All the old favourites will be back, a genuine stable, carols, musicians, the Nativity cast, car parking, mulled wine, hot chocolate and mince pies and of course the flock of sheep and, star billing, the donkeys, who love joining in the carols.

Tickets are a bargain at £8 each and are available now from Rudgeway Donkeys, Home Farm, Rudgeway. To purchase tickets, come at any time during daylight hours.

All the funds raised will go to Donkey charities abroad and in particular 'The Safe Haven for Donkeys' in the Holy Land.

Tales from the Graveyard!

Olveston Parish Historical Society

Wed. 3rd October 7.30 pm. Olveston Methodist Church

St Mary's churchyard contains a treasure-trove of village history – some of which is being lost as the memorials decay. A terrific community effort, in which many local residents took part, has resulted in all the surviving information from the gravestones in St Mary's Churchyard Olveston being transcribed and put online on the community website, for people from

Olveston and all around the world to view.

In the first talk of our new season, Tales from the Graveyard, Richard Newley will explain what was involved in the project and describe some of the detective work involved. He will show you how you can access the results of the project on-line.

Eric Garrett will tell how the churchyard developed and expanded through the centuries to meet ever-growing need. Finally, Eric and Richard will highlight some of the families commemorated in



the graveyard, using recent family history enquiries from around the world.

There will be a brief AGM before the talk and tea, coffee and biscuits will be served.

Everyone's welcome to this talk... just turn up.

To join for the year (7 lively, interesting talks), it's just £8 - a bargain! Pay on the night. £2 for a single meeting.

The Annual Programme of talks will be available at this meeting and will also be on the community website:

<http://www.olveston.com/historical-society>



The Bristol Ensemble Concert

Saturday 20th October is a date for your diary when members of the Bristol Ensemble, Bristol's professional Chamber Orchestra led by violinist Roger Huckle, will once again visit Thornbury with a concert of popular classical music. Following five previous Thornbury Autumn concerts, Roger has designed a feast of strings with pieces by Mendelsson, Holst, Grieg and Elgar.

It will be a unique experience to hear members of the Bristol Ensemble in the United Reformed Church in Chapel Street Thornbury. The Bristol Ensemble is a musician's collective inspired and led by Roger Huckle, bringing together the best of the region's performers noted for their accessible and passionate performances.

This eagerly awaited concert will be held in the United Reformed Church on Saturday 20th October at 7.30pm. Tickets at £16 each, to include interval finger food, can be obtained from Thornbury Town Hall or by phoning 01454 412272.

Seven Pieces for Seven Ages *Nicki Barnes*

Friday October 12th 7.45 - Candlelight concert in Rockhampton Church.

Please join me for an evening of meaningful music for flutes in aid of the charity War Child. Tickets £10 (£5 for under 16s) to include a glass of wine. Call 07973 796508 or email nicki@tombarnes.co.uk

The Whales of the River Severn

Nick Fear

Looking at the turbulent waters of the local River Severn occasionally shows traces of the fish that live beneath. Surface splashes and swirls may be caused by the renowned salmon or eels which have always been associated with the river. The idea that a whale caused the disturbance may not be a first thought, but they have been known in the area for centuries.

One of the first recorded instances dates from 1678 when a local trader purchased a 'sea-elephant' for a princely sum. In 1875 a whale weighing over 2 tons beached near Lydney and was taken to Gloucester. In 1907 another found between Awre and Frampton on Severn was promptly cut into pieces and enjoyed by local people. In 1925 a whale measuring 48 feet in length and 19 feet across, which had been seen spouting mid channel, came ashore at Sudbrook opposite Severn Beach. July 1943 saw a Greenland Whale 20 feet long and weighing over 2 tons reaching Awre. It was a welcome addition to the wartime austerity diet and was efficiently and quickly divided and distributed.

Perhaps the most famous and locally connected whale was the stranded wonder of 1885. In January, two local boatmen James White and Enoch Durnell came across a huge object lying in the river about a mile above Aust Cliff. A closer examination showed it to be a fresh, but sadly dead, whale left on the mud bank by a receding tide. With the help of one of Wintle's coal barges the whale was recovered on the next tide to Littleton Pill. It rested at Keen's Wharf, the area still known as Whale Wharf today. It was discovered to be around 68 feet long, its tail fin measured 16 feet and its jaws were 18 feet across. Examinations found its mouth to be lined with an elastic material edged with hairs like those in a horse's mane. Its weight was calculated at between 30 and 40 tons. Wooden props were applied to its mouth which allowed people to enter the body of what was described as a harmless and inoffensive creature. Many people from the area visited the site and wondered at the spectacle. The fishy smell can only be imagined, but perhaps the keen winds of the Severn redirected this.

William Sindry of Olveston traded as a smith and wheelwright, but also described himself as an engineer master. He was an innovator who, amongst other skills, ran and owned a celebrated steam traction engine. He was engaged to attend the site and raise the inanimate mass from the creek. His engine - always an exciting sight for locals - was cheered into action and began its work belching steam and sparks. He managed to drag the carcass inland, but despite the 35 horse-power of the machine, it was not strong enough to raise it to an onshore pit which had been dug.



The ownership of the river's valuable bounty was keenly debated by involved parties. Their wishes were frustrated by Mr Cox, the Deputy Receiver of Wrecks for the district. He took possession of the whale as he maintained that, as flotsam and jetsam, the carcass was Crown property. Instructions came from London and the whale was towed on a high tide into Bristol Docks. Here it attracted more public attention and photographers offered images for sale. Mr Thatcher of College Green advertised his art as, 'This huge hill of flesh now in Bristol beautifully photographed'. The mammal's fame was such that even Queen Victoria accepted images of it.

In February local papers described the sad end of the leviathan which 'had proved something more than a nine days wonder'. Sold at auction it had been ignominiously rendered for oil and manure. The only remains were fragments of skin obtained by interested sightseers and a few bones rescued for local museums. In fact, Thornbury Museum has a small display about the whale in its upstairs gallery and this includes part of the whale, the baleen plates from inside its mouth. Baleen, also known as whalebone, was used to make corsets and collar stiffeners.

The whales of the Rivers Severn have been consigned to history, but their descendants live on. Bearing them in mind is always worthwhile when looking at the river, for one of them may surface, following their ancestors' migration voyage.

Thornbury Picture House: Giselle

Thornbury Picture House (TPH) is presenting another evening of international quality 'Event Cinema' at the Cossham Hall on Friday 2nd November at 7.30pm (Doors open 7.00pm).

Following the successful screening of Matthew Bourne's ballets, *The Car Man* and *Sleeping Beauty*, in collaboration with More2Screen, Thornbury Picture House is screening the English National Ballet's *Giselle* as imagined by the celebrated choreographer Akram Khan with staging and costumes by Tim Yip (*Crouching Tiger, Hidden Dragon*).

The traditional romantic ballet has been reimagined by Akram Khan with Artistic Director and Lead Principal of English National Ballet, Tamara Rojo, dancing the role of Giselle, one of a community of migrant workers cast out of their jobs in a condemned garment factory; the story continues reflecting the conflict between the 'haves' and the 'have nots'.

The production (Cert U) was filmed in a year ago in Liverpool and released in late April 2018. The critics have rated it highly 'The Ballet Event of the year' *Daily Express*; 'It may well rank as the Masterpiece of 21st century dance' *Mail on Sunday*; 'A beautiful and intelligent remaking of the beloved classic'; *New York Times*.

Tickets £10 (Concessions £8 for over 65's or under 18's) are available from Thornbury Town Hall or at the TPH film night on Oct 19th or can be reserved by phoning 01454412272.

Severn Vale Flower Club

Our Open Meeting will be held in the Armstrong Hall Thornbury on Monday 5th November. Doors open at 6.30pm for 7.30pm. There will be refreshments, raffle and charity sales tables.

'A Classic Christmas' is the title of a floral demonstration to be given by Michael Bowyer MBE. Michael comes from Salisbury and is a well-known demonstrator, speaker, judge and teacher, and has been involved with many flower festivals.

For tickets and more information, please contact 01453 811089 or 01454 885213.

St Peter's Hospice Golf Day

St Peters Hospice Severnside Support Group would be delighted to welcome you to our annual Golf Day by kind permission of Thornbury Golf Centre on Friday 5th October from 11.00am.

This is a four ball Stableford competition to be played for the Men's, Ladies and Mixed Team trophies, plus prizes.

Entry is £140.00 per team of four and includes a hot buffet. For more information please contact 01454 417543 or email k.burgess@talktalk.net.

Please come along and support St Peters, your local Hospice.



Thornbury and District U3A

Have you recently retired or reduced your commitments leading up to retirement? Are you new to the area and looking to make new friends? Thornbury U3A promotes keeping us mentally and physically engaged and active in an enjoyable and friendly atmosphere. 'Learn, Laugh and Live' is the U3A motto and aims to provide opportunities for members to do so without having to travel too far or enrol on expensive course. We already have over 1,800 members and around 90 different groups meeting at various venues throughout the area but there is always room for more! The groups mainly meet during the day and range from Archaeology to Walking; some meet weekly, other less often and they include physical activities, crafts, board and card games, organised visits to gardens, concerts and theatre as well as purely educational topics. Details of all our groups can be found on our website: www.thornburyu3a.org.uk.

Our next Welcome Meeting will be held on Monday 8th October at 3.30p.m. in St Mary's Church Hall, Eastbury Rd, Thornbury. Please come along; we would love to meet you.

For further information visit our website www.thornburyu3a.org.uk or for membership enquiries membership@thornburyu3a.org.uk

Alternatively phone our Membership Secretary, Jackie Gitsham on (01454) 858438 or Chairman, Alison Makepeace on (01454) 415019

Advent Windows

Debbie Harries

As we announced in last month's Meeting Point, we are hoping to create these again this year. Over the last few years all sorts of people in Olveston have mounted Advent Windows as a kind of living Advent Calendar, and they've been very popular! If you would like to be part of it this year, please get in touch with Debbie Harries on 01454 613273 or oboe-debbie@live.co.uk by the end of October. Thank you.

Yours Faithfully

Rev. David Moss

St John the Evangelist, Elberton

Did you have a good holiday? It is always nice when people have remembered you have gone away, thought about you and taken time to ask how you enjoyed your holiday? Our journey to God starts when we have love and concern for others.

This summer we returned from our annual camping holiday to the Isles of Scilly. The site at Troy Town, St Agnes, is a set in four fields running parallel to the rocky shore, bounded by a low stonewall. We pitched our tent with the doors opening westward and awoke every morning to incredible views over the Western Rocks and the Bishop Rock Lighthouse. The outlook cannot be overstated, by day it is both beautiful and at the same time a little surreal because of the desolate rocks. Our youngest said it would be a good setting as the backdrop to the next Star Wars film. As the days drew to a close, the calm clear skies treated us to amazing sunsets. Clear nights brought with them views of the heavens; stars; milky way; and even meteor showers.

On returning home, photos reminded us of a visit when the weather was not so good and the Atlantic, with its prevailing westerly winds, threw everything it possibly could at us. When, cold and wet, we thought about packing up and going home and would have done so had we not been on an island. Why do we go back to St Agnes? Maybe because at this point, when the sun failed to warm us, the hospitality of the Islanders did. They took pity on those of us camping, blessed us and opened up the community centre as a place of refuge. Faith in God is nurtured when we stop thinking of our needs and start thinking of others. "Love your neighbour as yourself" said Jesus.

Back in Olveston, we were soon aware that the sun-drenched landscape told a different tale. The same sunshine we had enjoyed on holiday had brought hardship to farmers at home. Farming has always been a very vulnerable and sometimes lonely living. At harvest time we thank God for his goodness and pray for those who commit their lives to providing food for our plates.

Church News

ST MARY THE VIRGIN, OLVESTON

Oct 7	8am	Holy Communion	Rev Helen Webb Revs Moss & Lloyd
	10am	Harvest Festival	
	6pm	NO SERVICE	
Oct 14	8am	Holy Communion	Rev Ann Lloyd Mr Trevor Cook Rev Ann Lloyd
	10am	Morning Prayer with Choir	
	6pm	Holy Communion	
Oct 21	8am	Holy Communion	Rev Ann Lloyd Revs Moss & Bone Trevor Cook
	10am	Holy Communion with Choir	
	6pm	Evensong	
Oct 28	8am	Holy Communion	Rev David Bone Janet McBride Rev Ann Lloyd
	10am	Fourth Sunday	
	6pm	Evensong with Choir, All Souls	

Information on services correct at time of going to press.

Rev David Moss, 01454 415190; email: mossds@gmail.com

Verger: Mrs. June Robbins, 01454 617491

www.stmarysolveston.org.uk/index.html

PRAYER GROUP: Mondays, 2.45pm in the Chancel

WEDNESDAY HOLY COMMUNION: At 9.15am except 4th Wed when it is at Olveston Methodist Church

Morning Prayer 8.30am daily ex. Wed

CHAPELRY OF ST JOHN, AUST

Oct 14	9.45	Holy Communion	Revs D Moss & A Parker
Oct 28	9.45	Morning Prayer	Rev Ann Parker

Focal Minister: Rev Ann Parker, 01454 632329

e-mail annatdibley@btinternet.com

Church Wardens: Jon Burnett 633835 & Jenn Dickens 632035

ST MARY DE MALMESBURY, LITTLETON-ON-SEVERN

Oct 7	9am	Holy Communion	Rev David Moss
Oct 21	9am	Morning Prayer	Mrs Tracey Black

Contact Mrs Tracey Black 01454 417660

ST JOHN THE EVANGELIST, ELBERTON

Oct 14	9am	Morning Prayer	Judith Heybyrne
Oct 28	9am	Holy Communion	Rev David Moss

Contact Mrs Tracey Black 01454 417660

OLVESTON AND TOCKINGTON METHODIST CHURCH

Oct 7	10.00	Tock C	Morning Worship led by Mr Glyn Varney
Oct 14	10am	Olv. Ch.	Morning Worship led by Mrs Jenny Bourne
Oct 21	10am	Tock Ch.	Morning Worship with Holy Communion led by Rev Simon Edwards
Oct 28	10am	Olv. Ch.	Morning Worship led by Rev Sandy Williams

NORTHWICK LUNCHEON GROUP: This meets at 12.30pm on Wed.10th October. To book your lunch please ring 416528

TOCKINGTON LUNCHEON GROUP Thurs. Oct 18th 12.15 No need to book

COFFEE MORNINGS: Sats 10.30 - 12 noon in Olveston Methodist Hall

PRAYER MEETINGS Tuesdays 9.00-10.00 in Olveston Methodist Church.

THE OLVESTON COMPUTER CLINIC Olveston Methodist Hall Friday 7-9pm
Ring 07833 354672 or 07957 433091 for further information.

CONTACT: Rev Simon Edwards Tel 01454 418176, **email**
simon.edwards@methodist.org.uk

THE VINE House of Prayer

Pilning Street, Awkley BS35 4HL

Designated as a 'House of Prayer for all Nations' in 2005 we continue to meet in a relaxed atmosphere seeking, with God's help, to find ways to influence the world in which we live through prayer and relevant actions. This also includes sharing our own personal situations and praying for one another and the communities of which we are a part Times of worship (in various forms), applying Biblical Truths, and a time of remembrance of the death and resurrection of Jesus in sharing Communion are essential in our meeting together. We meet, on Sundays at 10.30am and Mondays and Wednesdays at 7.30pm We also visit other Churches and events so please check our Notice Board or contact.

Mike and Barbara Matthews, tel. 07512 917229 or email:
thevine_awkley@hotmail.com

THE OASIS CHURCH, OLD DOWN

Oct 7	6.30pm	Tony Ward
Oct 14	6.30pm	Phil Nutt
Oct 21	6.30pm	Brian Miller
Oct 28	6.30pm	Vision of Hope

Each Thurs at 7.30pm Prayer & Praise Time
Contacts Jenny Parfitt jennyparfitt@ymail.com
Sue Tett stett56@hotmail.co.uk

AUST EVANGELICAL CHURCH Family Worship 11.00am

For more details contact Danny Bamfield 01454 419324.
e-mail danny@thebamfields.co.uk

LITTLETON EVANGELICAL CHURCH

Evening Worship every Sunday at 6pm for details tel. 413247

RC CHURCH OF CHRIST THE KING, Thornbury -

Sun 8.30am Mass 11.00 Family Mass
Monday-Friday Daily Mass at 10am
Tel 01454 412223 www.ctk-thornbury.org.uk

SOCIETY OF FRIENDS (QUAKERS), Thornbury

Meeting for Worship Sundays 10.30-11.30: The Hanover Room, The Chantry, Castle St. Wheelchair accessible. Children welcome with prior notice.

Local contact: Roger Howell rog3er2@gmail.com 01454 415035

National: www.quaker.org.uk Bristol area: www.bristolquakers.org.uk

Diary Dates for October 2018

The information given below is believed to be correct as we go to press.

1 st Mon	Monday Movie	7.30pm	StM
2 nd Tues	Friends of Daldry Gardens Coffee morning Tea/Coffee & Bisc. 50p Monthly Raffle British Legion Women. Sally, Flower Arr'g	10.30-12.00 7.30pm	DGCL DGCL
3 rd Wed	Holy Communion followed by tea and cake. Table Tennis every week OPHS: Tales from the Graveyard & AGM	2.30pm 7.00-8.30pm 7.30pm	DGCL PH OMC
4 th Thurs	Thornbury Farmers' Market Coffee Shop Olveston Playgroup	9.00-1.30 9.00-12.00 9.30-11.30	OS+ MH
5 th Fri	St Peter's Hospice Golf Day. Tel 417543 Haven Memory Café Thornbury Carers' Support Group Computer Clinic every week Baquette Magique, OPTA	From 11am 10.15-11.45 1.00-3.00 7.00-9.00pm 6.30pm	URC Chy MH PH
6 th Sat	Flu Clinic, Alm. Surgery patients. Coffee Morning Litter Pick	09.00 - 12.00 10.30 -12.00 1pm	OSH MH PH
7 th Sun	Olveston School Fun Run		
8 th Mon	U3A Welcome Meeting, StM Church Hall, Thornbury Parish Players rehearsals start	3.30pm 7.30pm	 PH
9 th Tues	Friends of Daldry Gardens Coffee morning WI. 'Iron Man' by Jane Leslie Aust Parish Council	10.30-12.00 7.30pm 7.30pm	DGCL PH EVH
10 th Wed	Table Tennis	7.00-8.30pm	
11 th Thurs	Coffee Shop Olveston Playgroup Craft Session, Littleton	09.00-12.00 09.30-11.30 10-12	Ost MH LVH
12 th Fri	Memory Café Computer Clinic	10.15-11.45 7.00-9.00pm	TMH MH
13 th Sat	Coffee Morning Coffee Morning	10.30-12.00 10.30-12.00	MH AVH
15 th Mon	Monday Movie	7.30pm	StM
16 th Tues	Friends of Daldry Gardens Coffee morning	10.30-12.00	DGCL
17 th Wed	Jazz at the White Hart Olveston Table Tennis	8.30pm 7.00-8.30pm	 PH

18 th Thurs	Thornbury Farmers' Market Coffee Shop	09.00-1.30 09.00-12.00	OS+
19 th Fri	Haven Memory Café Computer Clinic	10.15-11.45 7.00-9.00pm	URC MH
20 th Sat	Coffee Morning Parish Council Surgery Quiz and Supper	10.30-12.00 10.30-12.00 7.30pm	MH MH StM
23 rd Tues	Friends of Daldry Gardens Coffee morning Olveston Parish Council	10.30-12.0 7.30pm	DGCL AP
24 th Wed	Table Tennis Alveston Historical Soc. TMTG Into the Woods 'til 27 th inc Sat Mat	7.00-8.30pm 7.30pm 7.30pm	PH AMC AH
25 th Thurs	Coffee Shop Olveston Playgroup Craft Session, Littleton	09.00-12.00 09.30-11.30 10-12	OS+ MH LVH
26 th Fri	Memory Café Computer Clinic	10.15-11.45 7.00-9.00pm	TMH MH
27 th Sat	Coffee Morning	10.30-12.00	MH
30 th Tues	Friends of Daldry Gardens Coffee morning	10.30-12.00	DGCL
31 st Wed	Table Tennis	7.00-8.30pm	PH
Looking ahead to November			
2 nd	OPAGA AGM and Talk	7.30pm	PH

KEY: **AC** Aust Church; **AH** – Armstrong Hall; **AMC** – Alv Meth. Ch.; **AMH**- Alv Meth. Hall; **AP** – Alexandra Pavilion; **AVH** – Aust Village Hall; ; **CH** – Cossham Hall; **Chy** – Chantry ;**CS** Castle Sch.**CTK** Christ the King **DGCL** – Daldry Gardens Community Lounge; **EVH** – Elberton Village Hall; **LVH** Littleton Village Hall **MH** – Olv.Meth.Hall;**OMC** Olv Meth Ch **OS** – Olv. School; **OS+** – Olv. Stores; **OSH** Old Sch. Hall Alm; **PH** – Olv Parish Hall; **StM** St Mary's Church, Olv.; **StMA** Almondsbury Church **StMTSt Mary's Thorn** **TCh** Tock Chapel; **TBCh** - Thornbury Baptist Church; **TMH** – Thorn. Methodist Hall; ; **TMS** Tock Manor Sch.. **URC** United Reform Ch Th

Contact details for any clubs or organisations in the Meeting Point area can be found in the Meeting Point Directory on the community website: www.olvostonandaust.com. If you would like to update your organisation's details, please email: meetingpointsecretary@olvostonandaust.com

Advertisements Neither Meeting Point, its editor, nor management committee accept any responsibility or give any guarantee in case of any dispute or claim as to quality, condition or delivery of commodities or services advertised in this magazine. It is not to be taken that publication implies recommendation. It is always advisable to check prices when ordering goods or services.

Views expressed by contributors are not necessarily those of the editor or Meeting Point magazine.

Copyright Meeting Point 2018. Copyright remains with the author(s) and Meeting Point. No part of this publication may be reproduced or transmitted in any form without the prior permission of the copyright owners.

Meeting Point is printed by Motion Printing LTD.