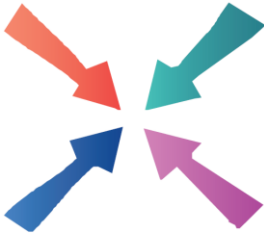


Meeting Point



November 2017



Meeting Point

Volume 42, Number 2, November 2017

The community magazine for the villages of Olveston, Tockington, Old Down, Lower Hazel, Awkley, Ingst, Aust, Elberton and Littleton upon Severn

From the Editor

EDITOR:

Marelin Orr-Ewing
Courtlands
Olveston
Bristol BS35 4DU
Tel: 01454 610081
meetingpointeditor@gmail.com

ASSISTANT EDITOR:

Angela Williams
Ashlea
Haw Lane
Olveston
Bristol BS35 4EG
Tel 01454 612850
meetingpointmagazine@gmail.com

ADVERTISING:

Nigel Dawes
Cromwell House
The Street,
Olveston
Bristol BS35 4DR
Tel: 01454 201558
julie.dawes@tiscali.co.uk

Publication date
1st of each month

Material for December 2017
to the Editor or Deputy Editor
by 6th November 2017.

I really love the month of November and this is not just because it's my birthday month. I like it because autumn has well and truly arrived, the leaves have changed colour and, mostly, have fallen. And, whilst I love walking in the countryside, and working in my garden, I also like the fact that I can now retreat indoors much earlier and light a fire.

There are is one local event, however, that will definitely tempt me away from my seat in front of the fire and that is the illustrated talk about New Zealand being held in the Parish Hall on 18th November. The subject matter sounds fascinating and, judging by the image accompanying the article, the photographs will be amazing.

This month's beautiful cover reminds us that 11th November is Armistice Day, when there will be a gathering at 11 am by the War Memorial outside St Mary's Church, Olveston.

Marelin

The cover is by Peter Haworth

Meeting Point Founded in 1976 by the Anglican and Methodist churches in Olveston, near Bristol

Meeting Point magazine and Meeting Point Directory are online at the Community Website: www.olvostonandaust.com

News from St. Mary's



Revd. David Moss' Licensing

As reported last month, Revd. David Moss' licensing will take place at St. Mary's, Olveston on Thursday, 2nd November 2017, starting at 7.30pm. We look forward to seeing you there.

However, it has been decided to allow David additional time to settle in to his new role. To this end Revd. Philip Rowe has agreed to remain as Vicar of Olveston and Aust until the end of the year. David does plan to be with us for some services during this time, but at the time of going to press a timetable has not been made available.

Memorial Service

For all who are mourning the loss of someone they loved, regardless of whether the bereavement was recent or long ago, a Memorial Service will be held at St Mary's Olveston at 6pm on Sunday, 5th November. We hope you can join us, as this service has been helpful to many others in the past.

At this service there will be an opportunity to light a candle, as well as having the name of your loved one(s) remembered in the prayers. Please mention the name(s) you wish remembered to the sidesperson as you enter the church. Afterwards there will be a chance to meet and talk with others over light refreshments. Please do attend with as many of your family and friends as you wish.

Remembrance

The village Remembrance Service and parade will be held on Sunday, 12th November.

Armistice Day itself will be commemorated by a gathering at the War Memorial outside the church at 11am on Saturday, 11th November.

Quiz night

The next quiz is on Saturday, 25th November, in the church. This time it's designated as the Lasagne quiz. Quiz and meal cost £5 each and bookings can be made via email to Debbie Harries at oboe-debbie@live.co.uk

Toy Service

Our service on 3rd December will again feature the Reach Up, Reach Out puppet team from Kingswood who will be performing sketches and songs related to Christmas. There will also be a collection of new toys which will be

donated to the Salvation Army who distribute them to disadvantaged children in Bristol at Christmas. It is a lively, fun service with a different take on Christmas!

Alpha Course

This year's Alpha Course begins on Wednesday 1st November in Almondsbury Vicarage. All are welcome as we explore the basics of the Christian faith in a relaxed atmosphere. Please contact Philip Rowe for more details.

Outreach Project

With thanks to everyone who contributed to St Mary's Springs of Hope Appeal which raised an amazing £17,812. The renovation of the hospital at Sachibondu, Zambia has now been completed. The solar water pump provided by the appeal (to be known as The Holy Roly Pump or HRP dedicated to the life and work of Roly) is complete and will provide fresh clean drinking water to the hospital and the site. It is hoped that there will be a self funded visit to the hospital next year when a plaque will be dedicated.

The drop in centre for vulnerable women in St Paul's, which the appeal helped to convert and refit, is open and providing a much needed facility where women in need can go during the day for companionship, care and safety.

If anyone would like more information or see photos please contact Gail gail@gaillowe.com or 612709

From the Registers of St Mary de Malmesbury, Littleton upon Severn

19th August Marriage of Samantha Jenkins and Glen Bickle

From the Registers of St Mary's, Olveston

2nd October Funeral of Christian Virginia Jessie Simpson followed by
Burial in the Churchyard.

November News from The Chantry

Quiz Night Thursday November 23rd 7.30pm: £1 per person, up to 4 to a team. Bar open.

Thornbury & South Glos Model Railway Club Weekend

18th and 19th November Saturday 10am-5pm and Sunday 10am-4pm.
Admission adults £5, children £2, family (2+2) £10.

Chris – our Postie

Pat Thirkettle

For two months running we have profiled someone born and bred locally and now, for November, it is Chris Clark. Chris was born in Alveston before his parents moved to Whale Wharfe in Littleton, so he went to St Helen's School, followed by Olveston School and then Marlwood. Until 1982 there were a variety of businesses in Whale Wharfe, but in 1981 the river Severn flooded dramatically; there was water up to the first floor of his parents' house and water extended towards Littleton past Brick Cottages. The flood defences that we know today were then built, and Whale Wharfe was sold. Chris' parents moved to Thornbury, but by this time Chris was in the army.



He joined the Parachute Regiment at seventeen and soon found himself on deployment in Northern Ireland for ten months at the height of the troubles. Initially, when asked what it was like, he smiled and shrugged his shoulders, but on further questioning he admitted it was pretty horrific being attacked with bricks and petrol bombs. He spent six years in the army and returned to Thornbury, where he soon married Sharon. They now live in Alveston, have a daughter Stacey, a son Jacob and two little grandchildren.

Chris worked locally in a variety of jobs, but redundancy prompted him to apply to the Post Office in 2003. Initially he worked in Thornbury, and then he worked ten years in Pilning until being offered the Olveston duty; apparently nobody else wanted it as it is a large area and therefore heavy and takes longer.

This was our gain, and for the last twelve years Chris has become a fixture; he knows everyone (unless you live in the Tockington/Old Down area because your delivery comes from Patchway!) and they know that he is keeping a friendly eye out particularly for those who are elderly or housebound.

His is a most positive and cheerful character with a cheery word for all. If at all unsure, he will knock and see if all is well and offer to do shopping. He could retire sooner but intends to work until compulsory retirement in seven years time – good news indeed for Olveston.

The Charter for Trees, Woods and People

Richard Lloyd

Olveston Parish Council is supporting the Charter for Trees, Woods and People. The Charter is a UK-wide initiative led by the Woodland Trust to raise awareness of the benefits brought by trees and woods. It is to be launched in Lincoln on 6th November, 800 years to the day since Henry III signed the influential 1217 Charter of the Forest, following the Magna Carta. Olveston Parish Council has applied to be recognised as a local council charter branch. In return for encouraging residents to register their support by signing the Charter (which is easy to do online), the Council will be receiving a Tree Charter Legacy Tree.

The Tree Charter will draw its strength from the number of signatures collected. Please look at the website www.treecharter.uk for more information about the Charter and the link for signing it. For every signature, a tree will be planted somewhere in the UK.

Alveston Gardens Association



Monday 6th November

7.30pm, Alveston Jubilee Hall

“The AGM”

Followed by Roy Cheek who will introduce us to
“Irresistible Garden Plants for Butterflies”

Tools for Self Reliance

Nigel Dawes

You cannot work without tools. African artisans – builders, blacksmiths, seamstresses and more – need tools to farm the land, build schools and homes, sew school uniforms and make desks for students. TSR works with local, experienced, organizations across Africa to give artisans the tools and training they need to earn a living and build their communities for the future.

If you have any garden or garage tools that you no longer need, such as spanners, screw drivers, hammers, biscuit tins or even that old sewing machine you have in the spare room, please contact me and I can collect on behalf of the Thornbury Rotary Club. Tel: 01454 201558

Watch Your Speed!

Adrian Baxter (Speed Watch Coordinator)

In early October I was doing the school run and I turned into Vicarage Lane from the Alveston Road. Driving slower than is indicated on the road signs, at around 25-30 mph, I drove through the various bends before reaching the last bend where the foot path and small fenced off area for foot and horse traffic begins at the top of the hill. Coming around this bend I was confronted with 2 families, children on scooters and one in charge of a dog right there in the middle of the road, only just reacting to the noise of my vehicle. If I had been going much faster, such as the maximum allowed speed of 60mph, there would have been a very serious incident.

I was fortunate that I wasn't in a hurry and I am always cautious on Vicarage Lane because I often encounter vehicles driving up the hill at around 50-60 mph and they don't slow much for the bends. Luckily, on this morning, I hadn't been distracted by my own children in the car and therefore because of my low speed I didn't screech or skid at all when I stopped. On this occasion I truly believe that the pedestrians had no idea of how much danger they had put themselves, their children and their animals, into.

As the coordinator of Speed Watch I feel it's important to tell these real life stories to raise awareness of the dangers. I would like to gauge feelings on this and I would like parishioners support to ask South Glos. Council to consider reducing the speed limit to 30 mph from the Alveston Road junction, all the way down to where it becomes a 20 mph zone. If you have any comments please email them to me:

speedwatch@olvestonparishcouncil.gov.uk

As the clocks go back please remember: Be Safe & Be Seen!

Old Down Cricket Club

Tony Gardner 07889 727729

150 Club Winners October 2017:

£50 Grantley Browning

£15 John Welsher

£5 Sylvia Gould

Latest £25 Bonus Ball Winners:

09/09/17 Alex Grosvenor

30/09/17 Andy Rowen

07/10/17 Sylvia Gould

Up the Down!!

Traffic, Parking and Safety in our Villages

Pat Hinton

In the Autumn of 2015 a Steering Group was established to consider various significant issues within the Parish. It was planned to enable local people to be actively engaged in matters that directly affect them and to influence decisions made. This, it was hoped, would enable a stronger, more vibrant and resilient community.

Traffic and parking was considered to be a major area of concern in the villages and so a sub-group was established with the aim of identifying specific traffic, parking and safety issues within the Parish and to recommend actions to address such issues and enforcement by all road users. The Traffic and Parking sub-group met first in January 2016 and at regular intervals since that time. The group identified certain key problem areas and the report of the sub-group was submitted to the Olveston Parish Steering Group in March 2016 and the Chair of the sub group made a presentation to this group in July 2016.

The main issues raised and covered in the report were:

- Speed and volume of traffic through the villages especially as a “cut-through” via Washingpool Hill and Old Down Hill, through Olveston towards Aust and the Severn Bridge
- Inconsiderate, illegal and dangerous parking, for example close to busy junctions – ie Pool Corner, The Green in Tockington and along The Street in Olveston
- Safety of pedestrians and all road users (with consideration of parking restrictions, street lighting, traffic-calming measures)

In response to these concerns:

- Meetings have since taken place with representatives of Olveston Parish Council, South Gloucestershire Council (SGC) and Matthew Riddle, local councillor.
- A ‘walkabout’ was carried out around the villages with representatives of the Parish Council and SGC identifying key areas of concern.
- The option of a full traffic and parking review by SGC is under consideration.
- Traffic speed readings have recently been completed and assessed.
- A ‘smiley face’ camera has been sited periodically outside the Parish Hall as a deterrent to speeding motorists and it is hoped to install a permanent “reminder” in due course.

- Speed Watch groups have been active in the area.
- A 20mph limit has been agreed around Tockington Manor School to the entrance with Manor Park following consultation.
- Instances of anti-social parking have been addressed
- There has been a consultation to reduce the speed limit on Washingpool Hill to 30mph
- The Council and Police have been actively involved in surveying traffic and monitoring traffic speeds in the villages.

Our sub-group will continue to work with these organisations to improve traffic and parking conditions in our villages.

What can we all do to help?

- Be considerate when parking and travelling through our villages.
- Anyone witnessing any minor traffic incident should report these to the Clerk to the Parish, Richard Rogers at *clerk@olvestonparishcouncil.gov.uk*, who will then report them monthly to the Parish Council and SGC (Currently only incidents where personal injury is involved are reported through the police to the Council.)
- More people are needed to join the Speed Watch Volunteers who monitor the speed of the traffic at various locations through the villages. Anyone who would like to join this group of volunteers should contact Adrian Baxter *adrian.baxter@olvestonparishcouncil.gov.uk*
- Anyone observing breaches of the 7.5 tonne weight restriction in the villages should report these to Alan Cahill at South Gloucestershire Council on *01454 864560*.
- Parking on pavements – particularly a problem in Olveston – should be reported to the Police through the local PCSO (*peter.wozniak@avonandsomerset.police.uk*) who can enforce local regulations, or contact Parking Attendants via South Gloucestershire Council on *01454 868000*.

If there is anyone who feels passionately about these matters and would like to join our group you would be very welcome.

Please contact: Pat Hinton *01454 612884* or *pathinton5331@gmail.com*

Our local football heroes

Olveston Parish Historical Society: all welcome.

Wednesday, 1 November 2017, 7.30pm, Olveston Methodist Church

It's just a few years after the First World War. The country's not in a strong state economically. It's a time when self-help is needed to get initiatives off the ground. If you're a local Olveston man, whiling away an hour kicking a ball around with your mates (and the ball might well be an inflated sheep's bladder acquired from a local butcher), you can't really imagine having proper facilities for playing football. Enter Colonel Turner, owner of Olddown House. He asks a few questions, makes a suggestion or two, encourages you to see whether there would be local support for a football club ... and before too long, that spirit of self-help is 'kicking' in!

Come and hear Eric Garrett tell the story of **Olveston United Football Club, 1926 to 1976**. As a former player himself, he's almost bound to include photos of himself in football gear. See if you can spot him – and maybe other local residents who played for the Club over the decades.

The Club are currently the G.F.A. Senior Amateur Champions for the year 2016-17, following their success in the Cup Final on 24 April 2017. Congratulations to all concerned!



This talk is open to all. If you sign up for annual society membership (£8), payable on the night, you get entry to this, plus five more history talks. Or it's £2 to attend a single meeting, payable on the door. Hope to see you there!

www.olveston.com/historical-society

Olveston School Christmas Fair

We are delighted to invite you to join us for our ever-popular Christmas Fair on **Friday 1st December from 3:30pm - 5:30pm**.

This wonderful event will be buzzing with activity for children and adults alike. There will be craft areas, games for children, a variety of stalls, tombola, and a raffle. Christmas Trees will be on sale and, despite being very busy, Father Christmas will be making an appearance. Plenty of refreshments will be on offer including a festive BBQ, delicious cakes and drinks. All are welcome and we look forward to seeing you.



Parish Matters

Richard Rogers

(clerk@olvestonparishcouncil.gov.uk)

Olveston Parish Council would like to thank Nick Gingell for all his hard work during his short time as a Parish Councillor. This included moving the road signage project forward, and arranging the repairs to the Old Down Play Area to extend its life. Nick has had to resign due to increased workload following a new job, and this creates another vacancy on the Council. Any interested parishioners are welcome to email me (see above) or log their interest on the Parish Website. Unless South Glos. Council indicate that a local election has to be held, a formal advert for this vacancy will be published shortly on the noticeboards and the local websites.

The Parish Council is continuing to run its surgeries on the third Wednesday of every month in the Olveston Methodist Hall (access via the sliding door in the Church vestibule) between 6:30 and 8:00 in the evening. Please feel free to come along to meet Councillors, to raise any local issues that you feel that the Parish Council can help with, or to find out more about how the parish operates if you are thinking about applying to be a member of the Council!

We have recently reviewed usage of the Parish Council noticeboards in Old Down, Olveston, and in Tockington. It was felt that although the local websites do a good job in providing contact information for Parish Councillors and meeting dates, it was also important to permanently publish this on the noticeboards. The boards are used for Statutory Notices, Official Notices, and will be available for A5 sized Community Information Notices.

The consultation on the Local Government Boundary Commission for England draft recommendations for South Gloucestershire closes on 6th November 2017. These include a reduction in the number of District Councillors to 61, and to place Olveston in a new Severn Vale Ward returning two Councillors. If approved the new arrangements are scheduled for the 2019 council elections. To find out more go to <https://consultation.lgbce.org.uk/node/9254>.

There are other consultations on the Pharmaceutical Needs Assessment 2018 for South Gloucestershire and on the South Gloucestershire Food Plan 2017, which explores our relationship with food and seeks to help shape a better food culture for the people of today and future generations.

Photographic Tour of New Zealand



Cathedral Cove NZ

International award winning photographer and Associate of the Royal Photographic Society, Peter Haworth, will be presenting a photographic travel talk about New Zealand on Saturday 18th November at Olveston Village Hall, Tockington. Doors open at 7.00pm.

During the past nine years Peter has travelled this amazing country and will talk about the “Hotspots” of his travel including landscapes, seascapes, natural history, astronomical and street photography.

Money raised from this charity evening will be distributed to two charities: PENNY BROHN UK– living with cancer and AUTICULATE a charity helping autistic children and young people to adapt into society.

Peter’s daughter in-law, Jan, was diagnosed with cancer in her mid 30s. The holistic approach offered by the Penny Brohn centre was a great support to Jan who is now helping others in Auckland, New Zealand, with the skills she learnt whilst undergoing recovery.

Thomas, one of Peter’s grandchildren suffers from Asperger’s Syndrome and anxiety. He has learnt social skills and gained confidence whilst under the care of the AUTICULATE charity.

Tickets for this evening are £10 each which includes a glass of wine on arrival. There will be a bar, tea and cake, raffle and Hotspot draw. Tickets can be purchased by contacting Jane Haworth Tel: 01454 612441. Please get your tickets in advance as this is going to be a very popular event.

This evening has been organised in appreciation of the help both charities have given members of Peter's family and is supported by local travel agent "C the World Travel", www.ctheworld.co.uk

Making Space for Wildlife *Catherine Offer*



Olveston
Parish Council

for the Logo Competition during the afternoon. We are very fortunate to have such a high profile personality taking an interest and supporting our local project. Thank you to all the children who entered the competition and all the adults who supported them. We have some amazing entries.

The launch day for 'Making Space for Wildlife' is Friday January 5th 2018. An open day and exhibition will be held in Olveston Methodist Hall and Chapel to promote ideas for our own gardens and allotments as well as the public spaces. Mike Dilger (ornithologist, ecologist and BBC presenter) will be making a short presentation and awarding the prizes

A meeting was held with Sally Pattison, Biodiversity officer for South Gloucestershire, who is supporting the project with her expert advice. She is delighted to be involved with 'Making Space for Wildlife' as Olveston is the first parish in the area with a project promoting biodiversity. The next Volunteers meeting is on **November 9th at 7.30pm in Olveston Methodist Hall**. We need help with many aspects of this project and everyone is welcome to get involved. Please come along to find out more.

The Parish Council has become a branch member of the Tree Charter. Please read Richard Lloyd's article to find out more, and please sign up to support the Charter for Trees, Woods and People. Trees are vital for our health and wellbeing. The Parish will be receiving a 'Legacy Tree' to plant in the Vicarage Lane play area.

catherine.offer@olvestonparishcouncil.gov.uk

Save a Life Day

Saturday November 11th 2017. Free Resuscitation Training sessions in Olveston Parish Hall. Last chance to book.

savealife@olvestonparishcouncil.gov.uk or 07979368589

Exercise on your Doorstep *Neill White*

Since March 2015, I have been leading circuit training sessions at Olveston School Hall every Tuesday and Thursday evening and their popularity and attendance has grown steadily. There is now a great mix of local people attending, with ages from 16 to 60+.

I have also recently started running two HIIT classes (High Intensity Interval Training) on Monday mornings in the Olveston Methodist Hall. This type of exercise is widely recognised as being one of the most effective ways of improving fitness levels and burning more calories and fat than other forms of exercise. It can be done by almost anyone, to their own personal level and limits. The sessions are designed for all levels of fitness and experience and the exercises can be modified for anyone if required. They are also designed to be challenging, so that you get the most benefit from the one hour classes!

New attendees are guaranteed a warm welcome and there is a lovely social and community atmosphere, where local villagers have got to know each other better. For more information and to discuss these sessions, please contact Neill White (Personal Trainer) on 07590 121 618 or email neill@nto-consulting.co.uk

Severn Vale Flower Club

“Bah Humbug” is the title of the floral demonstration to be held at our Open Meeting on Monday 6th November in the Armstrong Hall, Thornbury.

Doors open at 6.30pm for 7.30pm. There will be refreshments and raffle and sales table. Our Demonstrator for the evening is Nick Grounds. Nick is an excellent National Demonstrator and an Auctioneer by trade. For tickets and more information please ring 01453 811089 or 01454 885213.

Thank you

Stella Chick

Stella and her daughters Helen Kate and Alison would like to extend their sincere thanks to everyone who has given such support, encouragement, help and kindness over the past year while John was battling against his illness. We have been overwhelmed and humbled by the size of our post bag. Thank you.

Nuthatches

Trevor Cook

Some birders bemoan their lot in the summer because they can't see the birds for the leaves - and then again in autumn when each falling leaf becomes a potential 'little brown jobby'. But if it was easy to spot birds it wouldn't be as interesting. Anyway, as the storms of November clear away the leaves, it can be a good time to see a Nuthatch as you wander through mature woodland.



As you can see from the photographs it's a bright and colourful bird and so easily identified. Its signature call is remarkably loud for a small bird and can be used as an invitation to seek it out. However, you won't find it flitting about amongst the twigs or in the low bushes but rather clinging onto or under the large branches of a

tree or even clinging on to its trunk. For the Nuthatch likes to walk up and down tree trunks and is the only bird that can walk *down* a tree trunk.

You can sometimes find them if you drop down to Sheepcombe Brake, along the footpath that runs from the Inner Down cul-de-sac and through the Brake towards the Washing Pool. I have found them there and people living in the area say that they regularly see them.



Nuthatches will sometimes come into gardens and onto bird feeders but, as a woodland bird, they will not stray too far away from their home in the woods. In other words you might have to go to see them instead of the other way around.

Aust Parish Council Matters

Tim Pyper (austparishcouncil@googlemail.com)

South Gloucestershire Policies, Sites and Places Plan

The planning inspector has reported on the draft PSP and has approved it with some modifications. None of these affect Aust parish directly, except for the omission of the nature reserve and fishing ponds at Whale Wharf from the proposed designation as local green spaces. This document will however affect the future development of the whole area. It will be considered by South Gloucestershire Council and (if approved) adopted on 8 November.

South Gloucestershire is participating with the three other councils in what used to be Avon to develop a joint spatial strategy. This will be a high level strategic plan to establish the number of homes and jobs needed in the plan area up to 2036. It is due for adoption in 2018. It is likely that some housing will be needed in villages but sites for this are unlikely to be identified apart from those with strategic sites (such as the possible garden village at Buckover). However, there is likely to be some pressure for small scale developments.

Documents relating to all these issues can be found on South Gloucestershire's website.

Internal Audit

The council has to have an internal auditor whose role is basically to review the council's annual financial and governance statements. For the past 7 years, Mike Robinson has very kindly done this for us. He has now moved to Thornbury. We therefore need to appoint a successor.

You would need no professional qualification; what is required is an understanding of: basic book keeping and accounting; risk management affecting a small parish council; and governance.

Are there any volunteers out there?

Craft Sessions for All at Littleton Village Hall



No special skills required, just bring along those projects you've been meaning to finish. Share ideas and inspiration.

Thursday mornings: November 16th & 30th and December 7th & 21st.

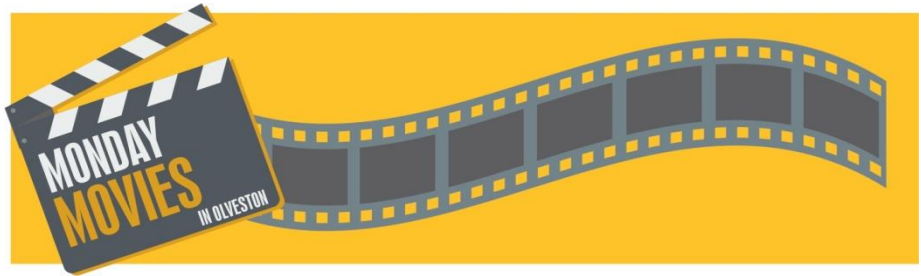
10am - 12 noon Littleton Village Hall.

Knitting needles and wool provided if you would like to learn to knit, but for all other crafts please bring your own materials.

Tea and coffee provided, suggested donation £2 a time.

For more information phone Janet Harrison 07799303737 or email warren@townsendhouse.me

Or, just turn up to one of the sessions. See you there!



NOVEMBER PROGRAMME

Trevor Anderson

Greetings to all readers from the Movie Club Team in Olveston. Our November programme features two very different films, the first one chosen to reflect the November theme of 'Remembrance' and the second a cult classic of wild comedy and music from the 1980s which has comfortably survived the test of time.

Everyone is welcome (you don't need to be a Movie Club member) and there is no need to book. Admission is free, although a donation at the end towards expenses is always welcomed and appreciated.

MONDAY MOVIES (1st and 3rd Mondays of each month at **7.30pm**)

Mon 6 Nov: The epic and inspiring true story of an American army medic and conscientious objector who, during the bloodiest battle of World War II, saved 75 men without firing or carrying a gun. It's a gripping wartime tribute to faith, valour, and the courage of remaining true to one's convictions. (2016, Cert 15)

Mon 20 Nov: Comedy classic packed with car chases, music and cameo appearances. Two brothers have sold their souls to rhythm'n'blues. When they learn that the church orphanage in which they were raised is threatened with closure they decide to stage a fund-raising gig. As they set off on their 'mission from God' they seem to make more enemies along the way - will they come up with the money in time? (1980, Cert 15)

CHILDREN'S MOVIE CLUB (Mondays at **10.00am** in the school hols)

No school holidays in November, so no films. (Boo,,,))

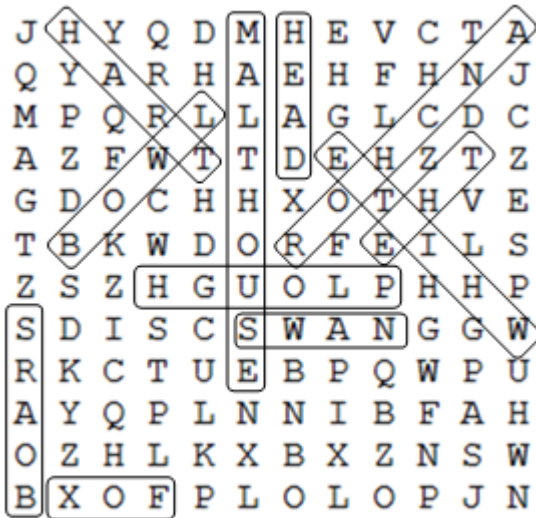
All the films are shown in **St Mary's Church, Olveston** and doors open 30 minutes before the start. Refreshments are available at all the shows, plus licensed bar in the evenings and popcorn and soft drinks in the mornings.



We make no charge for entry, but we do value and appreciate a small **donation** at the end towards expenses if you have enjoyed the evening.

For copyright reasons we can't name the films here, but if you join the Movie Club we'll send you titles and full details by email. It costs nothing to join – just email me at trevoranderson@btinternet.com

October Puzzle Answers



Here are the 8 pubs:

- Anchor
- Plough
- Malthouse
- White Hart
- Boar's Head
- Swan
- Fox
- Bowl

November Puzzle

Here is the November puzzle and it is simply a challenge.....

How many words of 3 letters or more can you make from the name **Guy Fawkes**?

There's no business like it!

Bristol-based revue group, Three Men's Company, will be making a return visit to the Cossham Hall, Thornbury at 7.30 p.m. on Friday 24th November. The title of the show is inspired by Irving Berlin's classic show-stopper from *Annie Get Your Gun*, "There's No Business like Show Business".

The Artists will be donating their services, and proceeds of the evening will benefit the Armstrong Hall Redevelopment Fund (Phase 1).

Tickets £10 (to include interval finger food) from Thornbury Town Hall or call 01454 412272.

Thornbury Chamber of Commerce

Thornbury Chamber of Commerce would like to draw our attention to the following events:

Thursday November 30th Late Night Shopping in Thornbury. Many shops will be staying open until 8pm. There will be music and special offers on the evening.

Saturday December 2nd Small Business Saturday. This is a national event, Thornbury will be taking part.

Saturday December 9th Thornbury Christmas Food & Gift Fair.
10am – 2pm. Returning by popular demand! There will be approximately 50 stalls in Castle Street and the Plain.

Friends of St. Mary's

The prize winners in the October draw, held on 5th October 2017 at the Friends Committee Meeting were :-

<u>Amount</u>	<u>Number</u>	<i>Name</i>
£150	461	Mr R J Smith, Olveston
£75	307	Mrs B Morgan, Tockington
£25	359	Mrs J Hawkins, Alveston
£25	587	Mr D Jeckells, Olveston
£25	424	Mrs E Screen, Rudgeway
£20	603	Dr E Saunders, Olveston
£20	471	Mrs J Panes, Olveston
£20	151	Mrs H Dangerfield, Olveston
£10	275	Mrs L Evans, Alveston
£10	224	Mr R Panes, Olveston
£10	386	Mrs M Baker, Olveston
£10	208	Mrs C Black, Thornbury
£10	364	Mr R Newley, Olveston

If you are not yet a member and wish to join the lottery please telephone Andy Phillips on 01454 614890. Thanks !

Latest news from A Forgotten Landscape

November! The year may be winding down but we're not! There's still plenty to be done and lot of activities you can get involved in. Here's a smattering, but do check our website, www.aforgottenlandscape.org.uk, for more!

Tuesday Talks – this autumn's Tuesday Talk series will be held at St Peter's Church, Cross Hands Rd, Pilning BS35 4JB. All talks start at 7:30 and run for about an hour. Please see our website to book your place.

Digging the Toot: results from the community excavation at Oldbury-on-Severn. Tuesday 7 November

How old is Oldbury Camp? It's a question that's been hanging over the ancient monument in Oldbury-on-Severn (locally known as 'The Toot') for decades. And trying to answer this question has been the main driver behind A Forgotten Landscape's archaeology projects. Over two weeks of excavation in June, a team of volunteers recovered archaeological finds, recorded archaeological features and took scientific samples. More than 60 people took part, ranging from residents of Thornbury and Oldbury, to Bristol, London and even New Zealand, helping archaeologists to excavate three trenches across the hillfort, and a number of smaller test pits around the edges.



In this talk, Manda Forster of DigVentures, the company that led the excavation, will look through the evidence we recovered during the archaeological dig and talk about how the hillfort was built, how old we think it is and what we found out about Oldbury-on-Severn along the way.

Weekend Hedge Laying Course. Rockhampton

Saturday 18 & Sunday 19 November 9-4pm or Saturday 9 & Sunday 10 December 9-4pm.

Learn the traditional art of hedge laying on a practical weekend course. Julian Smith, who has more than 20 years' experience of hedgelaying, will be teaching the local Berkeley style. This course is suitable for anybody with little or no experience of hedge laying. Both courses are free and all tools are

provided but you must book a place. Over the weekend we will also discuss other aspects of hedgerow management and tool maintenance. Please visit our website to register.

Beginners Bird Watching. Pilning

Sunday 26 November 10:30-12:30

Come and witness the great migrations along the Severn with Rupert Higgins, naturalist. Learn to identify a range of birds and generally enjoy a wild morning out along the River. The Severn estuary is a fantastic site to spot waders and ducks, we are likely to see curlew, wigeon, shelduck, dunlin and many more species. This event is free but you must book a place – please see our website.



For more details on these & other events visit www.aforgottenlandscape.org.uk/get-involved/events

Tockington Harvest Fayre

Garry Phillips



The Havest Fayre was held on Saturday September 16th and once again the weather was good to us. Although we had prepared for rain, with lots of tents covering the stalls and games, thankfully they were not needed. This year's Queen was Rosie Williams and her attendants were Annabelle Baker and Emily Seevaratnam. The Green was full of people all afternoon and they were able to enjoy music

from Thornbury's ukulele band, dancing displays, including one from the Brownies, together with a brilliant fancy dress parade. We raised £2,400, which will be used for the maintenance and upkeep of our four Methodist buildings in Tockington and Olveston.

Our thanks to all our helpers and to all of you who came and made it another successful and happy Harvest Fayre. We hope to see you all again next year.

Yours Faithfully

Ann Parker

I spent ages thinking about my 'Yours Faithfully' article for Meeting Point. I then wrote it, and saved it, but when I came to send it - after a short break - I couldn't find it. The problem was that I could not remember the title! So this is my second attempt! I'm sure I am not the only one with a bad memory. The funny thing is, and I know I share this with thousands of other people, I can remember the past really well and there is a lot of it!

I have recently moved to a smaller house and I am just starting to sort through all the stuff in the garage, which includes photographs. I've had a lovely time sorting through them all and mostly I can remember where and when the photo was taken, including one of the first school trip that I led. This was taking children from Sunderland to spend an educational week walking the fields and hills of Middleton in Teasdale. One morning the monitors announced, "There's snow on the tops Miss", in May! So we set off for High Force Falls, a wonderful place. It was snowing when we started so we are all bundled up but by the time we got to High Force the temperature had soared and we were all discarding clothes as fast as we could, within reason! During the week one girl became so ill that we had to call the doctor out and he said if we couldn't get her home he'd call an ambulance from Darlington. Luckily the Head was due to arrive that evening and, although reluctant, she took our girl home with her. What a week? What a start to my teaching career? But some lovely memories.

The importance of memories is that they provide a way of channelling our experiences, they ground who and what we are. When we can't remember, we get distressed. I know that if I relax the word, or the name, will come to me. The photos added a dimension to my memories, but they aren't as important as the memories themselves.

I like to think that I have mellowed a bit, after a pretty chequered Christian history. God stuck with me in what I think of as my wilderness years, He was always there, just loving me and waiting for me to come back and love Him back. Here I am now, with rich and happy memories, and a deep gratitude to my Lord and God for picking me up, and looking after me, as He still is. For you all I would wish that your memories give you pleasure, and to remember that God is always there, whether you want Him to be or not, whether you feel His presence or not, always loving, always caring.

Church News

ST MARY THE VIRGIN, OLVESTON

Nov 5	8am 10am 6pm	Holy Communion Holy Communion Memorial Service	Rev Philip Rowe Rev Philip Rowe Rev Philip Rowe
Nov 12	8am 10am 6pm	Holy Communion Remembrance Service NO SERVICE	Rev Helen Webb Rev P Rowe & Mr T Cook
Nov 19	8am 10am 6pm	Holy Communion Holy Communion with Choir Evensong	Rev Ann Lloyd Revs D Bone & P. Rowe Rev P Rowe & P Harrod
Nov 26	8am 10am 6pm	Holy Communion Fourth Sunday Evensong with Choir	Rev David Bone Mr Paul Harrod Rev Philip Rowe

Information on services correct at time of going to press.

Rev Philip Rowe, 01454 613223; email: office@stmaryssevernside.org.uk

Verger: Mrs. June Robbins, 01454 617491

www.stmarysolveston.org.uk/index.html

PRAYER GROUP: Mondays, 2.45pm in the Chancel

WEDNESDAY HOLY COMMUNION: At 9.00am except 4th Wed when it is at Olveston Methodist Church

Morning Prayer 8.30am daily ex. Wed

CHAPELRY OF ST JOHN, AUST

Nov 12	10am	Joint Remembrance Service with Aust Evangelical Church	Rev Ann Parker
Nov 26	10am	Holy Communion	Rev Ann Parker

Focal Minister: Rev Ann Parker, 01454 632329

e-mail annatdibley@btinternet.com

Church Wardens: Jon Burnett 633835 & Jenn Dickens 632035

ST MARY DE MALMESBURY, LITTLETON-ON-SEVERN

Nov 5	9am	Morning Prayer	Mrs Tracey Black
Nov 19	9am	Holy Communion	Rev. David Moss

Contact Mrs Tracey Black 01454 417660

ST JOHN THE EVANGELIST, ELBERTON

Nov 12	9am	Matins	TBA
Nov 26	9am	Holy Communion	TBA

Contact Mrs Tracey Black 01454 417660

OLVESTON AND TOCKINGTON METHODIST CHURCH

Nov 5	10am	Tock. Ch.	Morning Worship with Holy Communion led by Rev Pete Brazier
Nov 12	10am	St Mary's	Remembrance Day Service
Nov 19	10am	Tock. Ch.	Service led by members of the congregation
Nov 26	10am	Olv. Ch.	Morning Worship led by Rev Pete Brazier

NORTHWICK LUNCHEON GROUP: This meets at 12.30pm on Wed. 8th November. To book your lunch please ring 416528

TOCKINGTON LUNCHEON GROUP This meets on Thursday 30th November at 12.15 for their **Christmas Lunch**. To book please ring 613241

COFFEE MORNINGS: Sats 10.30 - 12 noon in Olveston Methodist Hall

PRAYER MEETINGS Tuesdays 9.00-10.00 in Olveston Methodist Church.

HOUSE GROUP Tuesday 2nd November at 7 The Green Olveston at 10.30am and Tuesday 21st November, led by Rev Sandy Williams, at 6 Manor Close Tockington at 10.30am

THE OLVESTON COMPUTER CLINIC Olveston Methodist Hall

Monday 2-4pm Wednesday 10-12 Friday 7-9pm

Ring **07833 354672** or **01957 433091** for further information.

CONTACT: Rev Pete Brazier Tel **01454 418176**,

e-mail pete@thebigfishcafe.co.uk

THE VINE, AWKLEY

The Vine, Pilning Street, Awkley

We meet in a relaxed, informal manner for worship, prayer & conversational Bible studies incorporating Communion, on Sundays at 10.30am and Mondays and Wednesdays at 7.30pm. We also visit other Churches and events so please check our Notice Board or contact .

Mike and Barbara Matthews, tel. 07512 917229 or email:
thevine_awkley@hotmail.com

AUST EVANGELICAL CHURCH Family Worship 11.00am

For more details contact Ann Roberts 632564.

e-mail ann.roberts@bylanes.co.uk

LITTLETON EVANGELICAL CHURCH

Evening Worship every Sunday at 6pm for details tel. 413247

THE OASIS CHURCH, OLD DOWN

Nov 5	6.30pm	Neil Mobbs
Nov 12	6.30pm	Ian Thornley
Nov 19	6.30pm	Martin Taylor
Nov 26	6.30pm	Mike Jenkinson

Each Thurs at 7.30pm Prayer & Praise Time

For further information please contact Jenny Parfitt jennyparfitt@gmail.com

RC CHURCH OF CHRIST THE KING, Thornbury -

Sun 8.30am Mass 11.00 Family Mass

Monday-Friday Daily Mass at 10am

Tel 01454 412223 www.ck-thornbury.org.uk

SOCIETY OF FRIENDS (QUAKERS), Thornbury

Meeting for Worship Sundays 10.30-11.30: The Hanover Room, The Chantry, Castle St. Wheelchair accessible. Children welcome with prior notice.

Local contact: Roger Howell rog3er2@gmail.com 01454 415035

National: www.quaker.org.uk Bristol area: www.bristolquakers.org.uk

Diary Dates for November 2017

The information given below is believed to be correct as we go to press.

1 st Wed	Computer Clinic every week Holy Communion followed by Tea & Cake Table Tennis O.P.H.S. Olv. Football Club Eric Garrett	10.00-12.00 2.30pm 7.00-8.30pm 7.30pm	MH DGCL PH OMC
2 nd Thu	Thornbury Farmer's Market Coffee Shop Olveston Playgroup Licensing Service of Rev. David Moss	9.00-1.30pm 9.00-12.00 9.30-11.30 7.30pm	OS+ MH StM
3 rd Fri	Haven Memory Café Thornbury Carers Support Group Computer Clinic every week	10.15-11.45 1.00-3.00pm 7.00-9.00pm	URC Chy MH
4 th Sat	Coffee Morning	10.30-12.00	MH
6 th Mon	Computer Clinic every week Monday Movie	2.00-4.00pm 7.30pm	MH StM
7 th Tue	Friends of Daldry Gardens Coffee Morning Tea/Coffee & bis. 50p Monthly Raffle	10.30-12.00	DGCL
8 th Wed	Table Tennis	7.00-8.30pm	PH
9 th Thu	Coffee Shop Olveston Playgroup	9.00-12.00 9.30-11.30	OS+ MH
10 th Fri	Friends of Daldry Gardens Coffee Morning	10.30 12.00	DGCL
11 th Sat	Coffee Morning Coffee Morning Resuscitation training tel 07979368589	10.30-12.00 10.30-12.00	AVH MH PH
14 th Tue	Friends of Daldry Gardens Coffee Morning Memory Café W.I. Aust Parish Council	10.30-12.00 10.15-11.45 7.30pm 7.30pm	DGCL TMH PH EVH
15 th Wed	Beat Surgery Table Tennis Th. Meth. Players The Small Hours' until Saturday 18th Jazz at the White Hart Olveston	10.30-11.15 7.00-8.30pm 7.45 8.30pm	OS+ PH TMH
16 th Thu	Thornbury Farmer's Market Coffee Shop Olveston Playgroup	9.00-1.30pm 9.00-12.00 9.30-11.30pm	OS+ MH
17 th Fri	Haven Memory Café Thornbury. Film Club 'Timbuktu',	10.15-11.45 7.30pm	URC CH

18 th Sat	Coffee Morning New Zealand Hotspots Photo travel talk	10.30-12.00 7.00pm	MH PH
20 th Mon	Monday Movie	7.30pm	StM
21 st Tue	Friends of Daldry Gardens Coffee Morning	10.30-12.00	DGCL
22 nd Wed	Table Tennis Alv. History Soc. 'Tudor Christmas Eatables'	7.00-8.30pm 7.30pm	PH AMC
23 rd Thu	Coffee Shop Olveston Playgroup	9.00-12.00 9.30-11.30	OS+ MH
25 th Sat	Coffee Morning Quiz	10.30-12.00 7.00pm	MH StM
26 th Sun	Aust Quiz Night at Boar's Head	7.30pm	
28 th Tue	Friends of Daldry Gardens Coffee Morning Memory Café	10.30-12.00 10.15-11.45	DGCL TMH
29 th Wed	Table Tennis	7.00-8.30pm	PH
30 th Thu	Coffee Shop Olveston Playgroup	9.00-12.00 9.30-11.30	OS+ MH
Looking ahead to December			
9 th Dec	Salvation Army Christmas Concert	7.30pm	StM
9 th Dec	Thornbury. Christmas Food Fair	10.00-2.00	

KEY: AC Aust Church; AH – Armstrong Hall; AMC – Alv Meth. Ch.; AMH- Alv Meth. Hall; AP – Alexandra Pavilion; AVH – Aust Village Hall; ; CH – Cossham Hall; Chy – Chantry ;CS Castle Sch. CTK Christ the King DGCL – Daldry Gardens Community Lounge; EVH – Elberton Village Hall; LVH Littleton Village Hall MH – Olv.Meth.Hall; OMC Olv Meth Ch OS – Olv. School; OS+ – Olv. Stores; OSH Old Sch. Hall Alm; PH – Olv Parish Hall; StM – St Mary's Church, Olv.; StMA Almondsbury Church StMTSt Mary's Thorn TCh Tock Chapel; TBCh - Thornbury Baptist Church; TMH – Thorn. Methodist Hall; ; WR – Wesley Rooms. URC United Reform Ch Th

Contact details for any clubs or organisations in the Meeting Point area can be found in the Meeting Point Directory on the community website: www.olvestonandaust.com. If you would like to update your organisation's details, please email: meetingpointsecretary@olvestonandaust.com

Advertisements Neither Meeting Point, its editor, nor management committee accept any responsibility or give any guarantee in case of any dispute or claim as to quality, condition or delivery of commodities or services advertised in this magazine. It is not to be taken that publication implies recommendation. It is always advisable to check prices when ordering goods or services.

Views expressed by contributors are not necessarily those of the editor or Meeting Point magazine.

Copyright Meeting Point 2017. Copyright remains with the author(s) and Meeting Point. No part of this publication may be reproduced or transmitted in any form without the prior permission of the copyright owners.

Meeting Point is printed by Motion Printing LTD.