

Meeting Point



May 2023

TRUE BLUE TAXIS
(OLVESTON)

Local Taxi Company



Honest, Reliable and Safe

Cash or Card Payments



Mobile:

07967 042794

Top-to-Tail Housekeeping

- Professional
- Dependable
- Comprehensive service

**Trading
Standards
Accredited**

**Felina
Contract Cleaning**

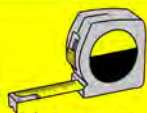
01454 201562
07790 050187
cleaning@felina.biz
www.felina.biz



Local Carpentry, Building & Plumbing

No Job Too Small

- Painting & Decorating
- Maintenance & Repairs
- Kitchen/Bathroom Fitting
- Static Home Repair & Refurbishments
- Handyman Service



For More Info Visit:

alvestonbuilders.co.uk

**Over 40 Years
of Experience**



**Card Payments
Taken**



Contact Mike

Tel: 01454 614887

Mobile: 07932 153300/07711 411075

Email: enquire@alvestonbuilders.co.uk

THORNBURY
Chiropractic
CLINIC

www.thornburychiropractic.co.uk

The Georgian House, 6 The Plain

Chiropractic

Johnatan Williams Msc DC

Carol Williams MSc DC

Acupuncture

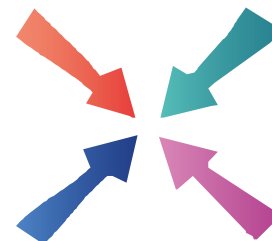
David Sanders Lic Ac. M.B. Ac.C

Massage

Josie Cole MT1

Open weekdays 8.30am-7pm

01454 418259



Meeting Point

Volume 47, Number 8, May 2023

The community magazine for the villages of Olveston,
Tockington, Old Down, Lower Hazel, Awkley, Ingst, Aust, Elberton and Littleton upon Severn

EDITOR:

Marelin Orr-Ewing
Courtlands
Olveston
Bristol BS35 4DU
Tel: 01454 610081
[meetingpointeditor@
gmail.com](mailto:meetingpointeditor@gmail.com)

ASSISTANT EDITOR:

Angela Williams
Ashlea
Haw Lane
Olveston
Bristol BS35 4EG
Tel 01454 612850
[meetingpointmagazine@
gmail.com](mailto:meetingpointmagazine@gmail.com)

ADVERTISING:

Bernard Amos
Tel: 01454 620388
[meetingpointadvertising@
gmail.com](mailto:meetingpointadvertising@gmail.com)

Publication date
1st of each month

Material for June 2023
to the Editor or Deputy Editor
by 9th May 2023

From the Editor

Many street parties have been organised locally to celebrate the Coronation, with details spread by social media, word of mouth or notes through the door. In addition, Meeting Point has got details of two special 'Coronation Teas' and a 'Coronation Coffee Morning' plus a very special concert in Thornbury which features music from previous Coronations. If you want to, you can watch the Coronation on the television at home, but there is also the option to join with others in St Mary's, Olveston, and see it on the big screen.

Later in the month, there is a Murder Mystery evening in Olveston, which sounds very interesting, and there is information about how you can join in the Aust Pilgrimage. This month's 'volunteering article' is from somebody who works once a week at Slimbridge. As anybody who has been there knows, this is a beautiful place and well worth a visit.

Whatever you do this month, and it has the bonus of an extra Bank Holiday, I hope that you have a really enjoyable time.

Meeting Point Founded in 1976 by the Anglican and Methodist churches in Olveston, near Bristol.

**Meeting Point magazine and Meeting Point Directory are online at the
Community Website: www.olvestonandaust.com**

Thornbury Motors

- New and Used car sales
- Servicing, repairs and MOTs on all makes



thornburymotors.co.uk 01454 412535



Grovesend Road
Thornbury
Bristol
BS35 2EF



SAVAGE ASSOCIATES

Accountants·Business Advisors
Corporate & Personal Tax Consultants

The Coach House, Aust Road
Olveston, Bristol BS35 4DE
Tel 01454 610388 Fax 01454 201541

for an initial consultation please contact:
edd.savage@savageassociates.co.uk

Vicarage Farm Holistic Therapy Centre

Bringing balance back
into your life.
Offering a wide range of
Holistic Treatments.



Hypnotherapy

A safe and effective treatment: to
remove stress, anxiety, depression
and phobias. Allowing positive and
powerful changes in your life.

Tel 01454 614390
www.vicaragefarm.org

Coronation Celebration Tea on Tockington Green

Come along and celebrate the Coronation with delicious cream teas and cakes on Bank Holiday Monday 8th May on Tockington Green. We shall be serving between 2.00pm and 4.30pm. Come along, bring your family and friends and make this a special, village occasion. There will be gluten free, dairy free and vegan treats too, plus decaff. drink options and plant milks available – just ask. Cash or card payments accepted, and you can 'take-away' as well. We will be there come rain or shine!

All proceeds will go towards the upkeep of Olveston and Tockington Methodist Church. Offers of help always welcome – contact Maggie on 01454 610053.

Volunteering at Slimbridge

A Volunteer

My love of Slimbridge started back in the 1960s when, as a Brownie I went on a trip to the Wildfowl and Wetland Centre. On that occasion I was very privileged to meet Sir Peter Scott in his home (now a museum, open to the public), he signed my autograph book and drew a pen and ink sketch of a duck in flight - which is still much treasured.



I volunteer as a Welcome Host, an indoor role which is very much customer focused. It's important that visitors get the most out of their day, so I help with signposting visitors to events, exhibits and talks. The role is busy and varied and includes selling bags of bird food and centre guides using a till to process

D. YOUNG
GARDEN SERVICES
Fully Qualified with over 16 years Experience
Grass Cutting Hedge Cutting Turfing Fencing
General Landscaping

Tel: 01454 416206 Mob: 07545 131488
Email: d.younggardenservices@hotmail.com

MD Aerials
Call Michael Dagger
T: 01454 418 341 M: 07817 304 236

Freeview – Freesat – Sky – DAB Aerials

Wall mounting LCD & Plasma
televisions setting up & tuning

mike@mdaerials.co.uk
www.mdaerials.co.uk

T. EDWARDS PLANT
Digger and Driver Hire

- Site/garden clearance
- Footings
- Drainage/soakaways
- Driveway preparation
- Stump removal
- Fencing & turfing
- Narrow access equipment

Price or day work t: 07900 372349
t.edwardsplant@gmail.com
CPCS/CITB qualified & insured

Divine
Bathrooms & Wet Rooms

07584 666154

Email: info@divinebathrooms.co.uk
Web: divinebathrooms.co.uk

S.J FARR
KITCHEN FITTING
SERVICES

Mobile: 07915673649

Our Associated Services Include:

- Plumbing
- Wall & Floor Tiling
- Decorating
- Plastering

City & Guilds Qualified

Geoff Gulliver
Carpentry & Joinery, Littleton
ALSO
UPVC Doors, Windows and
Conservatories. For a very
competitive **FREE** estimate

Ring (01454) 414947

payments. I also assist visitors who require additional assistance by hiring out mobility scooters and manual wheelchairs.

Another aspect of the role is promoting the benefits of WWT membership and signing up new members on a computerised system. We have a live Twitter feed so I also update the sightings book so that visitors know what birds have been seen and where.

I volunteer every Saturday morning, there is a daily briefing at 9.15 and the doors open to the public at 9.30. At weekends there is often a queue outside the door and if the sun is shining you can expect to have a hectic day. My shift finishes at 1.00 pm.

There is something for visitors to Slimbridge all year round. There is Welly Boot Land and an adventure playground for children, canoe safaris and many other talks and activities. The serious birders and photographers arrive early and head straight for the hides.

Slimbridge is a special place to volunteer, however busy and hectic it is I only have to look out of the window and see the beautiful swans, geese and ducks on the lake to feel immediately calmed. I've made friends with fellow volunteers and enjoy the wonderful environment. It feels good to play a small part in an organisation that does such important conservation work.

I chose an indoors based role but there are outside volunteering roles available too, to find out more visit www.wwt.org.uk.



News from St Mary's

Debbie Harries

The Coronation

St Mary's will be screening the Coronation of King Charles on Saturday May 6th at 11am.

If you would like to come along and be part of this special occasion, doors will be open from 10am

Coronation Celebration Service

Sunday May 7th 11am

This will be a special choral service to celebrate the Coronation of the King. It will be followed by fizz and canapés. We look forward to seeing you!

Phoenix Flooring Limited 

DISABLED ACCESS

Finance Available
Buy now, pay monthly
Provided by **iDeal Finance**

RESIDENTIAL & COMMERCIAL FLOORING SPECIALISTS

Carpets • Luxury Vinyl Tiles • Laminates
Engineered Wood • Room Size Remnants
Vinyls • Artificial Grass

CASH & CARRY **OPEN TO THE PUBLIC AND TRADE**

Tel: 01454 620707
email: enquiries@phoenixflooringltd.co.uk
www.phoenixflooringltd.co.uk

 **Unit 15 Hemingway Business Centre**
Walker Way, Thornbury, Bristol, BS35 3US



The Film for May

The Monday Movie on May 1st is a Kenneth Branagh film from 2021. In August 1969, surrounded by sporadic violence and growing danger, nine-year-old Buddy finds himself confronted with the ugly reality of sectarian conflict. As the stranglehold of increasing turmoil tightens around his once-peaceful working-class neighbourhood, Buddy tries his best to understand 'The Troubles' - after all, someone must be responsible for forcing people to flee their homes. Buddy's family come face to face with a nearly impossible, life-altering, decision - to stay or start packing?

Doors open at 7pm and the film starts at 7:30pm. Free admission (but donations always welcome). Licensed bar, coffee and tea.

Fish and Quiz Results



The 10th Annual Fish and Quiz evening was held on Friday 24th February in the Olveston Parish Hall. The winning team, pictured, was Fingers Crossed.

The total amount raised on the evening was £420, which was divided between the appeals in respect of the war in Ukraine and the recent earthquakes in Turkey and Syria.



Olveston Parish Hall Annual General Meeting

The AGM will be held in the Hall at 7.30pm on Thursday May 11th. Please come and support your wonderful local amenity and the people who run it. We need some new blood on our Management Committee, so if you feel that you may be able to contribute to our team then please come and find out more. Wine and Cheese will be served to further induce attendance.

2 Men Went To Mow

All Aspects of Garden Maintenance, Plants & Shrubs Supplied, Garden Rubbish Removal, Fully Insured

Garden and Tree Service Tel: 07956 311901
Local, Friendly and Reliable Email kev@2menwenttomow.co.uk

Tree Surgery (NPTC Qualified)
All Types of Tree Work Undertaken
Contract Grass Cutting
Beds & Borders Maintained
Pruning and Hedge Cutting
Planting

FREE ESTIMATES!

L. & J. Gulwell
Family Funeral Directors

1 Quaker Lane,
Thornbury
BS35 2AD

Local independent family funeral directors
for over 50 years

Specialists in bespoke funeral services, burials,
cremations & pre-paid funeral plans

Call 24hrs 01454 418 779 • www.funerals.uk.net

COMPANION AND DRIVING SERVICE

Driving Miss Daisy
We're There For You

Now taking bookings in your area!

- For people of all ages unable to drive but wish to remain independent
- Supported trips to the doctor, hospital, shops, bank, hairdresser, vet, etc.
- Social outings, holidays, help at home and much, much more
- DBS checked and First-Aid trained
- Dementia friendly
- Wheelchair Accessible Vehicle
- Fully Licensed

To book your Daisy
07951 079 558 / 0333 014 6211
northbristol@drivingmissdaisy.co.uk
www.drivingmissdaisy.co.uk

Top quality Nursing and Residential Care

Beech House

Beech House Care Home provides excellence in all aspects of care for all our residents, offering the best in nursing care for the elderly and residential care for people with a diagnosis of dementia.

Our unique care service includes:

- beautiful gardens
- purpose built homes with 24/7 air circulation
- spacious rooms and wide corridors
- top quality chefs
- television with DVD and telephone in each room
- wheelchair provision at no additional cost
- high technology baths and walk-in showers
- regular minibus trips
- programme of interesting and stimulating activities

RECENTLY RATED Outstanding by Care Quality Commission

To arrange a visit, telephone **01454 412266**
For more information see www.bristolcarehomes.co.uk

Bristol Care Homes
providing a unique care service

Aust Pilgrimage

Trevor Cook

Aust Pilgrimage 2023

Saturday 20th May

All Welcome

8.00am Service in Bristol Cathedral
after which you can either
Walk to Aust, or
make your own way to St John at Aust for
5.00pm Pilgrimage Service

St Augustine of Canterbury in St Gregory's Church, Harfield

For many years the Pilgrimage to Aust has taken place on a Saturday on or near to the Feast Day of St Augustine of Canterbury. It commemorates the meeting of Augustine with the Celtic Bishops which, according to Bede, took place at St Augustine's Oak, which, he says "lies on the border between Hwiccas and the West Saxons". Aust, on the banks of the River Severn, is thought by many to be the place where this meeting could have taken place.

Pilgrims meet at Bristol Cathedral at 8.00am on the morning of the pilgrimage and walk the 15 miles to the Chapelry of St John at Aust, where there will be a tea followed by a Pilgrimage Service at 5.00pm.

We would like to encourage those who might find the full walk too long to join in along the way - details of the route are published on Facebook (search for *Aust Pilgrimage*) or at www.austpilgrimage.wordpress.com, or to arrange their own walk (or travel by other means) to Aust Church, or simply to join those who have walked at St John's for the Pilgrimage Service at 5.00pm.

For more information about the Pilgrimage see:

www.austpilgrimage.wordpress.com or [Facebook \(Aust Pilgrimage\)](https://www.facebook.com/AustPilgrimage) or email: austpilgrimage@yahoo.com

Aust Parish Council

Annual Parish Assembly

The Annual Parish Assembly is an opportunity for residents to hear about what the parish council has been doing over the past year and to raise any issues which they might want the council to consider over the coming year, as well as a chance to discuss other matters of general interest to residents. These meetings date back many years to when we did not have the many methods of communication which we enjoy now but are still a useful way for residents to keep in touch with the parish council, and vice versa.

Learn with Bern

How to Knit & Crochet



Individual & Small Group Tuition

Thursday, Friday or Saturday

Over Lane, Almondsbury

hunkaboo.learn@gmail.com

for further details

GRANGE CARPETS



- CARPETS
- VINYL
- LAMINATE FLOORS
- RUGS
- CURTAINS
- BLINDS

Serving the local community since 1984, Grange Carpets are your first choice for flooring, rugs, curtains, and blinds. We supply most leading brands of carpet and vinyl as well as ILIV curtains and the Think Rugs range. Our carpet prices include standard fitting, with a free home measurement and consultation service.

Grange Carpets is a member of the Associated Carpet Group.

GRANGE CARPETS
28 ST MARY STREET
THORNBURY
BRISTOL BS35 2AT

01454 419805

www.manwithavan.info

Removals ✓ Clearances ✓ Deliveries ✓

Scrap cars ✓ We're local ✓

Cheaper than a skip!

Call: 07742791139



Quartz Worktops

Worktop Manufacture – Templating & Installation
www.planitstone.co.uk



0% Finance available

Email: sales@planitstone.co.uk

Trade and Public Welcome

Call: 0117 329 1718

Wider range of materials, at a better price than B&Q, Wren, Howdens. Deal Direct with your local Worktop manufacture

This year's assembly was held on 11th April. The chairman, Steve Meredith, described the parish council's activities over the year and Matthew Riddle (our local South Glos. Council ward councillor) reported on SGC matters. Cllr Riddle also encouraged residents to join the Community Engagement Forum which brings together the villages of Severn Vale with key organisations such as the police and SGC. See <https://beta.southglos.gov.uk/local-community-meetings> for more details. Other matters discussed included the possible fate of the Whale Wharf complex, a new Village Agent service aimed at supporting vulnerable and elderly people in our area, traffic congestion around Aust roundabout and the lengthy closure of Sandy Lane, Aust.

We also took the opportunity to thank two long-serving councillors who are standing down. Catherine Collinson has served as a parish councillor for eight years and Claire Hawkins for five years. They were thanked warmly for their service to the community and presented with bouquets of flowers as a token of appreciation.

Parish Council Election and Vacancies

All parish councils in South Gloucestershire are up for election on 4th May. However, only four people have stood for election to Aust Parish Council (which has seven council seats available.) The election is therefore uncontested and the four people who put themselves forward automatically become councillors. Thank you to Ian Jenkins, Steve Meredith, David Spratt and Jeremy Warren for stepping up to represent your community for another four years. This means that there are three vacancies, which can be filled by co-option. Anyone who thinks they might be interested in being part of the council is warmly encouraged to talk to one of the current councillors (contact details at bit.ly/austpc_main) or contact the Clerk to ask any questions they might have and find out a bit more about what is involved.

Parish councillors get involved in a broad range of village issues; in recent months we have covered litter, highway maintenance, traffic, the Jubilee celebrations and many other matters.

Noticeboards

By the time you read this, we will hopefully have a shiny new parish noticeboard in Elberton. This has been funded by the Community Infrastructure Levy, which is a charge on development designed to improve infrastructure alongside new buildings in the parish. The new board has one side with open access; residents are invited to use this to advertise any events of community interest (though no commercial advertising please.) The noticeboard in Littleton has also recently been refreshed and is similarly available for notices of general interest. The board at Aust is locked but I am happy to display any notices sent to me.

 **PawsPetCare**
...simply for the love of animals

Providing care for your pets
when you need it

Contact Helen for a friendly and reliable service
07493 153520 or enquiries@pawspetcare.com
www.pawspetcare.com

Frontline Martial Arts

Traditional Martial Arts / Taekwondo

Mighty Mites (under 10's): Fridays 4.30-5.15pm at
Juniors (ages 10-13): Mondays 7.15-8.15pm
Adults/over 13's: Mondays 8.15-9.45pm
at Alveston Youth Centre



Tel: 07771 692222
www.frontline-ma.co.uk

SEVERN SIDE TAXIS

SIX SEAT COMFORT
AIR CONDITIONED CAR

AIRPORTS
BUS STATIONS



HOSPITALS
EVENINGS OUT

RING STEVE WARD
07879 601011

THE WHITE HART INN Olveston



Traditional 17th Century English Pub

Catering for Parties and Functions
Wide variety of cask & keg beers
Skittle alley & pool table available
Book now for Skittle Matches
Award winning courtyard garden

Telephone: 01454 612175

FRANCIS DESIGN & BUILD Carpentry & Building Services

For all aspects of carpentry

Doors, Skirting, Kitchens, Fencing,
Decking, Stairs, Timber frame etc.

Call Craig on 07970 514409
(or, if busy)
email: craigyoung0308@live.co.uk

Next Parish Council Meeting

Our next meeting will be held on **Tuesday 16th May at 7:30pm** in Elberton village hall. Agendas for council meetings are posted on the village noticeboards at least five days before the date of the meeting and are also available on the council web page (bit.ly/austpc_docs). Residents are very welcome to attend.

Aust Parish Council

Serving the communities of Aust, Elberton
& Littleton-upon-Severn

Emma Pattullo, Parish Clerk

(01454) 837271 / austparishcouncil@gmail.com



ARMSTRONG
ARTS
GROUP

The Buffalo Gals



For an uplifting and amusing night out, The Buffalo Gals will have your feet tapping to the delights of 'Old -Time' country music.

The band revels in the traditional old songs and tunes of Appalachia, early bluegrass, early country music, blues and rags, ballads, spirituals, Cajun and gospel, all brought to life with a talent for fresh arrangement.

Through the driving energy of banjo and fiddle, soaring harmonies and syncopated, percussive step-dance, the visual and musical delights of this band, as well as their humour, repartee and rapport with audiences, produce irresistible shows for most music venues.

The show takes place on Saturday May 13th at 7.30pm at the Methodist Church Hall, High Street Thornbury. Tea/coffee served during the interval. Tickets £15 from AAGThornbury@gmail.com

NB. AAG would welcome up-to date certificated first aiders who would appreciate complimentary tickets to steward at events.
Contact: janeparfittrail@gmail.com



For Detailed Aerial Photos of Homes,
Rooftop Inspections & Orthomosaics
call Neil on 07986 162088



Severnside Heating & Plumbing



- Installations
- Servicing
- Repairs

Working locally since 2003. An experienced heating and plumbing engineer. For a no obligation quote please call Mike
Mob: 07554 825813 Tel: 01454 613780



LA Electrical Services
YOUR LOCAL ELECTRICIANS

New Builds, Rewires, Consumer Units, EV Charge Points, Landlord Reports (EICR), Testing & Inspection, Sockets, Lighting, CCTV, Security, Solar and Battery Storage & much more

f t i /laelectrical
01454 633 336
LAELECTRICAL.COM

Baby and Toddler Music!



Have fun and enjoy music with your child

Meet others and share music as well as a cuppa and maybe cake
Suitable for ages from 0-4 with a supporting adult of any age

10:30am Wednesdays in Severn
Beach Village Hall
£2-5 for an hour session dependent on numbers

FFI Contact Janet Harrison janet_harrison@outlook.com or 07562 212435 or turn up to a session

Dave Webb

Painter - Decorator

07809 869149

01454 201640

*Reliable, professional, friendly service.
Please ask for your free quotation*



Squire Sweep

A chimney sweep service from
Michael Squire

Tel: 07504 253 467

Email: squiresweep@gmail.com

Visit: www.squiresweep.co.uk

Thornbury Choral Society

Saturday, May 13th, 7.30pm at St. Mary's Church, Thornbury (BS35 1HQ).

This concert by the Choral Society and the Thornbury Camerata will be a very special one as it is a celebration of the Coronation.

Conducted by Steven Kings, we shall be performing music which has been used for previous coronations. Handel's Coronation Anthems were composed for George II in 1727 and we shall sing three of them : Let Thy hand be strengthened, The King shall rejoice and the ever popular Zadok the Priest. Mozart's Mass in C Major was probably used at the coronation of both Leopold II in Prague in 1791 and at the crowning of Francis I of Austria a year later. The concert also includes Symphony No. 6 in F Major by William Boyce.

Soloists are Charlotte Newstead (soprano) Rebecca Chellappah (mezzo – soprano) John Bacon (tenor) Robert Marson (bass)

Ticket prices are £15 (Pre- booked) £17 (on the door) £5 (under 18s). Available from tickets@thornburychoralsociety.org.uk or 01454 417865 or from Horders Stationers (after April 26th).

Do come and join us for what will be a most enjoyable evening.

Coronation Celebration Tea Party

St Peter's Hospice Severnside Support Group would be delighted to welcome you to 'Afternoon High Tea' to celebrate the Coronation on Thursday 11th May, at Methodist Church Hall in Thornbury at 2.30pm. Musical entertainment from Lizzie Adkins.

Tickets are priced at £10.00 (to include a full homemade high tea) and are available from Hospice Shop in Thornbury or pay on door. Do come along and celebrate this special occasion.

Please support St Peters – your local hospice.

Littleton on Severn Village Hall

Coronation coffee morning

Friday May 5th 10.30 – 12 noon

Coronation-themed monthly Friday coffee morning

Village Hall AGM

Thursday May 11th 7pm

Please note the change in date from previously advertised.

motion
motiandesignsprint

Do you know we print the Meeting Point Magazine?

We also print for lots of local clubs, events and businesses.

Based in Severn Beach we offer convenient off-road parking right outside our door!

We print everything from Wedding Stationery to Business Stationery

Our professional design and modern printing techniques have saved time and money for lots of people.

Fast, efficient and professional.

Why not let us print for you?

01454 631289
info@motionprinting.co.uk
www.motionprinting.co.uk

ALMONDSBURY PHYSIOTHERAPY AND SPORTS INJURY CLINIC

Louise Brinson
Chartered Physiotherapist, hpc reg

Almondsbury Surgery, Sundays Hill
Almondsbury, BS32 4DS

Tel: 07786915442
Fax: 014540615745
E-mail: physiolouise@hotmail.co.uk

Also at Aztec Spa Leisure Club

ACE1

Window & Gutter Cleaning

Window Cleaning
Gutter Cleaning & Repair
Fascia & Soffit Cleaning
Conservatory Roof
Solar Panel Cleaning
Power Washing

M: 07590 201264
T: 01454 436162

 Gleaming Insurance

Olveston and Tockington

Parish Hall

07780 515317

A great venue for :

- Fitness
- Parties
- Public events
- Music & Dance

Check availability & book online at www.olvostonparishhall.co.uk

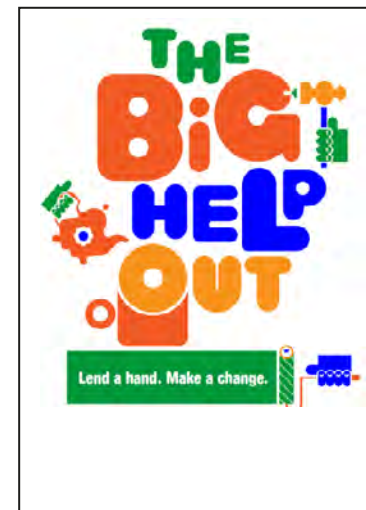
"Our newly decorated Hall"





Thornbury Volunteer Centre

Monday 8th May is to be a National Day of Volunteering. People are being encouraged to volunteer in their local community as part of celebrations for King Charles III's coronation. The aim is to bring communities together, encourage more people to volunteer and create a lasting volunteering legacy from the Coronation.



Thornbury Volunteer Centre has created a dedicated webpage for organisations seeking volunteers to help out around this time. If your organisation plans to get involved and would like details to be posted to this page, please email mail@volunteer-thornbury.co.uk with brief details of what the volunteers will be needed for, together with contact details.

If you, your friends or work colleagues would like to help out, please visit our Big Help Out webpage for details of where you can be of assistance. Then please contact the relevant organisation direct:

volunteer.thornbury.co.uk/bighelpout

Alveston Repair Café

The Alveston Repair Café on Saturday 25th March was very well attended, with 39 items being worked on, 25 of which were either repaired or held to be repaired later. Judging by the level of chatter and the number of cakes consumed, it is safe to say that everyone enjoyed the morning.

The next Repair Café will be held on Saturday 20th May from 10am to 1pm in St Helen's church in Alveston.

XL Plumbing & Heating Solutions Ltd

- General Plumbing
- Boiler Installation, Servicing & Maintenance
- Gas Safety Certificates
- Bathroom Installation & Tiling

Contact Mark Mob: 07738 726803
Email: xlplumbing@hotmail.co.uk
Tel: 01454 549008
Web: www.xlplumbing.co.uk





Bristol Carriage Masters

- Religious or non-religious funerals
- Bespoke funerals for burial or cremation
- Fully guaranteed pre-paid funeral plans
- Direct cremations



177 Crow Lane, Henbury, Bristol, BS10 7DR
Telephone: 0117 950 8066
Website: www.bcm-funerals.co.uk
Email: admin@bcm-funerals.co.uk

Windmillcare Homes

— great places to Live



Windmill House

The original, elegant home in a delightful rural setting with 2 acres of beautiful gardens delivering unrivalled care

01454 413818



OSBOURNE COURT

Our brand new purpose-built home providing exceptional specialist dementia care in the heart of the village of Stoke Gifford

0117 944 8700

**Residential, Short-term Respite
and Day Care available**

enquiries@windmillcare.com

or www.windmillcare.com

TOCKINGTON OSTEOPATHY

HELPING YOU BACK TO HEALTH

Effective Treatment of:

- Back and Neck Pain
- Arthritic and Rheumatoid Pain
- Joint Pain and Injuries
- Sciatica and Trapped Nerves
- Tendonitis and Muscle Injuries
- Tension Headaches

Please call on **07870 219249** or visit our website www.tockingtonosteopathy.co.uk to make an appointment or discuss how we can help.

Run by Natalie Gladstone - over 20 years' experience.

Easy parking on site - all major health insurances covered.

Old Down Hill, Tockington, BS32 4PA.

Thornbury Heritage Trail

Thornbury is currently undergoing many changes that will shape its future, but its rich and interesting heritage will never change. With spring approaching and the weather improving, maybe now is an ideal time to have a stroll around the town and find out or remind yourself about the history of Thornbury?

The Thornbury Heritage Trail was created by Thornbury and District Heritage Trust (which runs the museum) to celebrate the Millennium in 2000. It covers a total distance of 3.7 Km (or 2¼ miles) and it's an enjoyable way of discovering the previous importance of the town and its history. A recently updated guidebook to the Trail can be bought from the Museum, or from Horders on the High Street, for just £2.

If you prefer a digital version, you can download the Guide (a 28-page booklet) and print an enlarged map for free from <https://www.thornburymuseum.org.uk/our-area/thornbury/town-trail/> Enjoy an afternoon stroll in the sun and discover some local history as you go!

Starting at the Town Hall, you can follow the Trail's bronze way-markers, set into the pavements, and, by consulting the Trail Guide, you can bring the history of local buildings and places to life. Here's an example from Castle Street:

11 Castle Street, Porch House.

This is a significant example of a large medieval hall house with a later two-storey porch. In 2016, tree ring dating of structural timbers suggested it was built in 1401.



In the early 1900s, tailor Thomas Cox Smith had a type of pommel or vaulting horse in his workshop here. When he made riding habits, he would get his customers to sit on it so he could check the fit and drape of the outfits when "seated" on a horse!

Along the Trail, there are also seven illustrated information boards which tell you more about that particular location.

Once you reach St Mary's Church, you can enjoy the countryside section of the Trail - rural footpaths with Trail marker posts highlighting points of interest along the way - before you return to the town's footpaths.



Ridge Roofing and Property Maintenance

Roofing ❖ Chimney Repairs ❖ Lead Work
Guttering ❖ External Painting
General Maintenance ❖ **FREE Estimates**

Tel: 01454 885766
Mob: 07724 166917



DOMESTIC APPLIANCE REPAIR SPECIALIST

- WASHING MACHINE
- TUMBLE DRYER
- DISHWASHER
- FRIDGE FREEZER
- COOKER
- HOB OR HOOD

Fast, friendly and efficient service
Sales - Service - Repair

Tel: 01454 850522 - Mobile: 07917441539
Email: d-cr@live.co.uk - Web: www.d-crdomesticappliances.co.uk



EARTHWORKSUK

We offer a range of recycled and quarried products including 6F5, type 1, topsoil and decorative stone. These can be delivered straight to you on site or collected from us at our yard in Cromhall.
Check out all we can offer you on our website or contact us using the details below.

Skip Hire

Top Soil

Recycled Aggregates

Grab Lorry Hire

Tipper Hire

info@earthworksuk.co.uk www.earthworksuk.co.uk
Orders Line: 07782472727
Bristol: 01179 828265 - South Glos: 01454 501037




Lending with Heart and Mind

South Gloucestershire Council fund
a not-for-profit loan scheme for homeowners
and landlords*.

We understand the expense of maintaining
your home and we work with you to take the
stress out of funding repairs, improvements or
adaptations.

We see you as an individual, not a credit score.
Our knowledgeable team of advisers will guide
you through the process of applying for a home
improvement loan.

For a no-obligation assessment
or more information visit
www.lendology.org.uk or call 01823 461099

Heatherton Park Studios, Bradford on Tone, Taunton, TA4 1EU

*subject to eligibility



Be aware that the rural section has some stiles, and it may be muddy at times, but it is well worth the effort. If you are unable to go along the rural path, it is easy to retrace your steps back to the town and then follow the remaining way-markers to complete the Trail.

Please also take the time, now or on another occasion, to visit Thornbury & District Museum in Chapel Street.

Check out our website for opening times, current exhibitions and much more. We look forward to welcoming you.

www.thornburymuseum.org.uk

Friends of St Mary's

The prize winners in the April draw, held on 6th April 2023 were:

| Amount | Number | Name |
|--------|--------|-----------------------------------|
| £150 | 337 | Mr D Baker, Olveston |
| £75 | 244 | Ms M Dale, Olveston |
| £50 | 594 | Mrs S Roos, Olveston |
| £25 | 614 | Mrs S Fairhead, Oldbury on Severn |
| £25 | 387 | Mrs M Baker, Olveston |
| £20 | 647 | Mr D Baker, Olveston |
| £20 | 552 | Mrs B Kingscott, Almondsbury |
| £20 | 287 | Mrs A Harley, Alveston |
| £20 | 404 | Mrs A Knapp, Tockington |
| £20 | 501 | Rev'd D Bone, Tockington |

If you are not yet a member and wish to join the lottery, please telephone Andy Phillips on 01454 614890 or email andisp28@hotmail.co.uk.

Don't forget, if you're not in you can't win!

LINELA

embroid | print | promote

One place for everything promotional.
Specialising in embroidery,
printing and branded gifts



T Shirt Printing
Sports wear
Work wear
School wear
Promotional Products

Call us: 01454 615300

Email us: sales@linela.co.uk

www.linela.co.uk

BonneFreshClean

Carpet & Upholstery Cleaning Specialists

Love the look and smell of
clean and fresh carpets and
upholstery?

Bonne Fresh Clean brings to
you a professional carpet and
upholstery service that will
leave them sparkling and fresh.

Call for a free
no obligation
quote today!

- Thorough, gentle deep cleaning, no residues
- Child and pet friendly treatments
- Latest industry approved qualification and full insurance



Bonne Fresh - Relax and enjoy beautifully clean
and fresh carpets and upholstery!

T: 01454 436001 M: 07774 908410

W: www.bonnefreshclean.co.uk

44 Townsend Lane, Almondsbury, Bristol, BS32 4EQ



Livewire Electrical
Electrical & Mechanical Solutions



Domestic, Commercial
and Industrial Installations

All electrics for new build, extensions and
alterations to satisfy mandatory Building
Regulations. Landlords safety inspections
Portable Appliance Testing (PAT)

Electrical and electronic service and repair
For 24 hour call-out service available please
call Peter Jones: Tel: 07880 858785

Email: pete.livewire@blueyonder.co.uk

Local number Tel: 01454 613482

Visit our web site at
livewire-electrics.co.uk

Cookin' On Gas Ltd



Repairs & Sales of all
domestic appliances:

GAS
safe
REGISTER
211879

Gas & Electric Cookers and Hobs
Washing Machines, Dishwashers
Tumble Dryers

www.cookinongas.co.uk
enquires@cookinongasltd.co.uk

Matt Cole
1 Olive Gardens Tel 01454 851545
Alveston Mob 07715 705670

Marlwood's Got Talent Returns

Friday 12 May at 7pm at Marlwood School.

This is a great all-round, feel-good, red-carpet
family event. Tickets are priced at £5 per
adult and £2.50 per child, to get tickets please
contact:

sarahwalters2@mac.com.

More information about Friends of Marlwood
is on our Facebook page: @Friends of
Marlwood School or please
email: marlwoodfriends@gmail.com.



Marlwood Community Council - Volunteers Needed

Di Steer

Over the years the governance of Marlwood School has changed in
accordance with CSET (Castle School Education Trust) policies. The
Marlwood School Local Governance Committee has been replaced by
Marlwood School Community Council. This new council aims to provide an
increased parental and community perspective on a range of areas relevant to
Marlwood School to ensure that the school is fulfilling the Trust's ambitions to
provide 'A Great Education for Every Child' and that it is fulfilling its own
values of love learning, respect, challenge and community. Whilst the
Community Council does not form part of the accountability structure, the local
perspective gained from the work we do will be invaluable in shaping the
future of Marlwood School.

There are currently vacancies for members of the local community to join the
Council. It is an extremely rewarding role to undertake, and we are hoping
there will be some of you who would be able to support the school in this way.
We meet six times a year, usually at 5pm for approximately 1.5 hours, and
there are opportunities to see the school in action and to support specific
areas of education that Marlwood School offers.

Beauty at the Barn

4, Grey Gables, Vicarage Lane, Olveston
For appointments telephone Nicola on
01454 201717



Jessica Manicures
GELation Nails
Shellac Nails
Jessica Pedicures
Spray Tanning
Waxing
Ear Piercing
Eyelash Perming
Eyebrow Shaping
Eyelash tinting
And more...
Evening appointments available
Gift vouchers available



Olveston & Tockington Tennis Club

Introducing a brand new coaching
programme with TH Tennis.
Offering 5 days/week coaching
from kids to adults

Clubspark.lta.org.uk/THTennis

www.ottctennis.co.uk

Now's the time to get back
on court.

If you would like more information about what the role entails and would like to register your interest in the opportunity of becoming a member of the Community Council at Marlwood School, please contact the Chair, Di Steer, at: di.steer@cset.co.uk.

A Murder Mystery

Murder at the Manor by Paul Harrod, Friday 19th and Saturday 20th May

You are invited to a charity murder mystery evening at Olveston Parish Hall. This will be enacted on stage with opportunities to talk to the cast, ask questions and work out who committed the dastardly deed. It starts at 7pm with drinks and nibbles, followed by a two-course meal.

£15 each, sitting in teams of 6-8 people.
A cash bar will be open all evening.

All proceeds from the two evenings will be donated to the Aanandit Charity, which helps support underprivileged children and young people in Nepal.

If you would like to come along and challenge your 'little grey cells', please contact Paul Harrod on paul.harrod@gmail.com or Lesley Clarke on 07803 589770.

Olveston and Tockington WI

The Women's Institute is democratic and member-led and has a resolutions process which puts members at the heart of decisions about our campaigning activity. Every issue that we campaign on stems directly from a resolution put forward by members and adopted at the Annual Meeting. WI members have a unique opportunity to turn a concern into a national campaign every year, backed by the whole of the WI. We will be discussing the resolutions currently proposed at our May meeting. We will also be having a talk from Audrey Shepherd about the history of the WI.

Regular extra activities each month include a walk and a 'stitch, knit and natter' session. We also have a skittles match planned.

If you are interested in joining us, please contact Angela Green on 01454 615222. We meet on the second Tuesday of the month at 7.30pm at Olveston Parish Hall.



MYNEAT TECHNICAL SUPPORT FOR YOU - AT HOME

I'm Jed, the Tech Guy - I have a world of technical knowledge and the patience of a saint!
No matter how big or small your issue, I can solve it either in person, over the phone or on line.

LAPTOPS, COMPUTERS, PRINTERS, MOBILE PHONES, TV's, XBOX, JUST ABOUT ANYTHING REALLY

And best of all – I can come to you! Silver Surfers and technophobes - I'm your man.

I know your requirements are unique and because I work independently for you,
I can deliver the most affordable solutions to your doorstep.

I also support local customers with personal shopping. If you need a trip to Curry's PC World, John Lewis, Apple or the store of your choice I can advise you on the best deal to match your tech requirements.

So what are you waiting for, call me and your tech issues will be resolved in no-time!

Email: help@myneat.co.uk Tel: 01454 406000 Web: myneat.co.uk

PREMIER HOMECARE Delivering Outstanding Live-In Care

A COVID-safe and affordable alternative to nursing home care.

Our fully managed, affordable 24 hour Live-In Care service allows you or your loved one to continue living in the safe, familiarity and comfort of the family home.

Our staff are hand picked specifically to match the personal needs and requirements of each individual client; guaranteeing you a bespoke and tailored service.

24 hour Care at Home - carers carry out all required duties following a personalised care-plan. They can manage medication, personal care, domestic duties as well as shopping and meal preparation plus trips out where required.

0117 456 2490
www.premier-homecare.co.uk

homecare.co.uk
Homecare.co.uk Review Score for Premier Homecare

Offices at:
24 Canford Lane
Westbury-on-Trym
BS9 3DH

67 Stoke Hill,
Stoke Bishop
BS9 1EP

Inspected and rated Q
Outstanding

"We are delighted with the Live-In care that our mother receives in her home. The carers are patient, kind and very well-trained. We trust them completely with our mother's care."
ML, November 2020

el cuisine

Catering for any occasion
Private parties, Birthday and Anniversary Celebrations,
Weddings, Funerals, Corporate Events,
Formal Dinners, Shoot Lunches... whatever the occasion

www.el-cuisine.co.uk Please contact Emma 07931952939 info@el-cuisine.co.uk

Tockington Manor School and Nursery
for boys & girls aged 2 - 13

Limited places
available for
Reception
and Year 7
2023 entry

Book your private tour of the school with
our Headmaster at a time convenient to you.
01454 613229 www.tockingtonmanorschool.com Scan the QR.




Olveston GP Road Race

This cycle race, taking place on Sunday 28th May, passes eleven times through the villages of Olveston, Tockington, Old Down, Alveston and Elberton. These details about the event, with timings and suggested viewing points, will help those of you who would like to watch the race and how to avoid it if that is your preference.

The timetable on the day will be as follows:

- 9:30 – Race organisation team arrive at the HQ which is Marlwood School, Alveston.
- 10:00 – Race warning signs are distributed around the circuit. Although no roads are closed, junctions are shut down by accredited marshals each lap for a few minutes when the race passes that point.
- 10:00 – The Finish area by The Crescent in Old Down will be set up. This will not affect traffic in any way.
- 11:30 – Race participants begin to arrive at Marlwood School for race sign-on. There are 80 elite cyclists taking part in the event.
- 13:00 – Accredited Marshals will move to their positions on each major junction on the circuit. These marshals have police authority to stop traffic with the STOP sign they hold.
- 13:00 – Race stewards and red flag marshals move into positions around the circuit, in particular to assist at marshal points in Olveston and Tockington.
- 13:30 – The race convoy and riders will move out from Marlwood School and the race begins. The race convoy will include several lead vehicles and officials' vehicles which are identified by signage and yellow flashing lights on the vehicles. They are supported by motorcycle outrider that warn traffic of the approaching race. Competitors are required to obey the rules of the road and there are race commissaires in following vehicles that can remove riders that do not adhere to this.
- 13:40 – The riders will be approaching their first ascent of Old Down Hill, which they will go up 11 times in total. This is the best position from which to watch the race. Please do not park on Old Down Hill. There is limited parking available at Queen Alexander Memorial Pavilion (QAMP) which is on the right at the top of the hill.
- 13:45 – The riders will pass through the finish point for the first time by The Crescent. This is also a good point to watch the race. The race finishes after 10 further laps.
- 15:00 – This is about the mid-point of the race and there is likely to be a breakaway group a few minutes ahead of the main bunch of riders.
- 16:20 – Approximate race finish time by The Crescent, Old Down. There **are** likely to be several groups of riders that finish over a period of up to 5-6 minutes.

Rotary 

TOOLS FOR SELF RELIANCE
Practical help for practical people.

People Can't Work Without Tools!

Thornbury Rotary Club, along with other Rotary clubs, has been supporting "Tools for Self Reliance" for many years. It is a UK based charity working to help relieve poverty in Africa by renovating and sending redundant tools to them. They then work with local African organisations to deliver a programme of tools and training that brings about effective and sustainable change for carpenters, builders, blacksmiths, artisans and their communities. Primary countries they work in are **Ghana, Malawi, Sierra Leone, Uganda and Zambia.**

So, if you have tools you no longer require, please contact Rotarian

Robin Cole-Morgan on 01454 414281

He will arrange to pick up the tools and take them away at a time that suits everyone.

What you could declutter and donate:
Garden Tools and Workshop Tools (for example, spanners, screwdrivers, chisels, planes, and hammers). They can be hand tools or powered.

Thank you!

keeping your garden beautiful... 

- LazyLawn - superior artificial grass supply and installation - licensee for Bristol & South Wales
- landscape design and build with 25 years experience
- tree surgery
- garden makeovers
- regular garden maintenance

Garretts Gardens and Landscapes

for Garretts Gardens or Landscapes
t 01454 614111 m 07974 109919
info@garrettslandscapes.co.uk
www.garrettsgardens.co.uk



*The agent
for all seasons*

Come rain or shine,
lisa costa estate
agents have the
experience and
knowledge to take
you smoothly through
the moving process.



lisa costa

RESIDENTIAL SALES & LETTINGS

53 High Street | Thornbury | BS35 2AR
01454 279734 | sales@lisacosta.co.uk | lisacosta.co.uk

Please note: If your property is currently on the market, the terms and conditions of your Existing agency agreement must be considered before instructing ourselves.

16:40 – Finish area is cleared of riders and return to Marlwood School.
17:30 – Presentation to riders at Marlwood School.

We ask horse riders and pet owners to please be advised of the race, and to take care. We apologise for any inconvenience caused.

The race organisers would also like to extend an invitation to local residents to help out on the day as stewards. If you are interested, please contact Brian O'Kelly: brian.okelly@bristolroadclub.com



Aerial Archive

Nick Fear

There is an amazing aerial photographic archive on the Historic England web site. The local RAF photographs from the 1940s and 50s are just wonderful. If you are interested, it is really worth a look. Site navigation is not that easy, so I hope this helps:

Go to Historic England website: <https://historicengland.org.uk>

On the top line click on 'images & books' and go to 'browse our collections'.

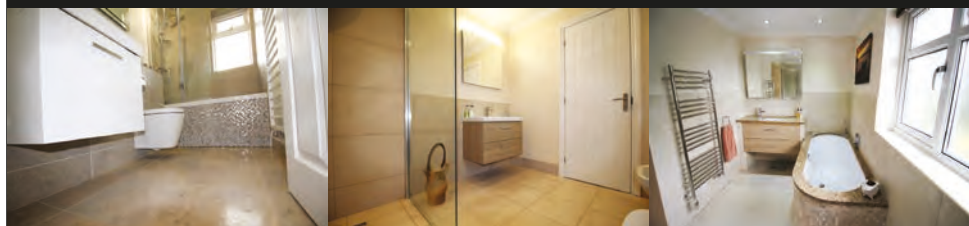
At present, top of the page is an aerial photograph of showing Tewksbury and beside it the words 'Aerial Photo Explorer', click on these.

Scroll down slightly and you will see a map of the country covered in what looks like 'beehive' circles, polygons, in different colours. Use the mouse

Paul Whittaker

BATHROOMS & WETROOMS

DESIGN . SUPPLY . INSTALLATION



Tel: 07879 666221 . Website: www.paulwhittakerbathrooms.co.uk



Village Care

Our local Care and Support staff can assist with all your Homecare requirements, from cleaning and domestic duties to personal care, we can tailor our service to meet your needs.

Please contact us for a free no obligation assessment.

T: 01454 415861 E: info@village-care.co.uk

63 High Street Thornbury www.village-care.co.uk

curser to zoom in on our area. When you get to, say, the Severn bridges you will see a map below the polygons and you can zoom in on where you wish to look.

You will see lots of yellow lines which are in fact area boxes. The mauve triangles are the RAF historical photo markers, the red circles are more modern images.

Zoom in again to a square and click on this. If the square has a triangle or circle click on this. A small photo square will appear, click on this. A larger image will appear and you can click it once more to enlarge it.

Sometime there are multiple images for one area, and these will be indicated above the photo box.



Susty Fest

Thornbury's Festival of Sustainability
10am to 2pm on Saturday 20 May
St Mary's Centre, Thornbury, BS35 2AD

Come along to find out about: electric cars, home energy efficiency (reduce your bills), growing your own food, nature on your doorstep, recycling, composting, and how to log your wildlife sightings and make your own wildflower seed bombs!

Organised by CATS (Climate Action Thornbury and Surroundings) with support from South Gloucestershire Council. For more information email: cats@sustainablethornbury.org

Friends

It's great to be able to talk to people who may have had the same life experiences as yourselves. People who lived through the privations of the forties, or the fifties - when Britain was recovering from the war years. Perhaps you even lived through the thirties! If you find it difficult to get out now and would like to rekindle old friendships or make some new friends, why not come to Tea and Chat? You'll meet people just like you!

The next Tea and Chat will be in Oasis Church in Old Down on Friday May 5th at 2.30. Tea and cake are free and so is transport if you need it. The only thing we ask for is a small donation of a pound towards the heating.

If you are interested call Lynn on 01454 612201 or Lesley on 01454 613804



Legal advice
that brings
balance to life

Award winning legal advice
to help you navigate change
and plan for the future.

gl LAW

Let's talk about you or your business www.gl.law 0117 906 9400

BUSINESS SERVICES · PROPERTY · DISPUTES · FAMILY LAW · WILLS & PROBATE

- All makes servicing and repairs
- Petrol and Diesel MOT Testing
- Tyres, Exhausts and Batteries
- Air Conditioning
- Latest Bosch On-Board Diagnostics
- Vehicle Sales



GREEN LANE GARAGE
OLVESTON

New Road, Olveston, BS35 4DX
01454 202030






Olveston Parish Council

Pat Savage

Speedwatch

The speed at which some vehicles travel through the villages continues to cause concern. Whilst the VAS monitors do act as a deterrent to oncoming speeding motorists, the Parish cannot afford to have them installed at all approaches. Whilst Speedwatch has been tried at various times in both Olveston and Tockington, there has been a shortage of volunteers. We hope to recommence soon, when the police will conduct the training. If you are at all interested, please contact: miles.grocott@olvestonparishcouncil.gov.uk

Local Council Elections

These will take place on Thursday 4th May. Whilst all those eligible to vote will receive a Polling Card which should ideally be taken to the Polling Station. In the past it was acceptable just to confirm one's postal address, however now a form of personal identity will be required in the form of a driving licence, passport, or an older person's bus pass. If you do not have any of these, you can apply for a Voter Authority Certificate. Please telephone 08003280280 to obtain an application form.

Councillors

Lyndsey Gethin and Martyn Sukey will be stepping down as Councillors at the above elections. Both Lyndsey and Martyn have worked tirelessly on the Council's behalf. They were both particularly involved in the very successful Jubilee celebrations. We wish them both well for the future. It does mean the Council is now two persons short. Whilst the nominations have already been submitted it is still possible to be co-opted. If you are at all interested, please contact the Clerk on: olvestonparishcouncil.gov.uk

Tockington Quarry

Work has now commenced at the quarry to install a pathway for easy access. This will involve removing both dead and dying trees. A specialist wildlife camera will be installed to track mammals and indeed all inhabitants of the quarry. Please check on our website to see how the photos can be viewed. We do hope all of you will have an opportunity to enjoy a walk in the quarry.

gsharchitects



FREE CONSULTATION

For further information please contact us on:

info@gsharchitects.co.uk
www.gsharchitects.co.uk
Almondsbury, Bristol

07780 000220

Build without planning permission

Quality design service from
concept to completion

Planning, construction drawings and
contract administration service
tailored to suit you

Domestic, Commercial,
and Sustainable Architecture.

Experienced working with
Listed Buildings

Build your dream home in your
garden

Development Advice and Appraisal

3D Visualisation Services

RIBA 

New Passage Cat Kennels

**Large Runs ~ Heated Chalets
Licensed Cattery
in Pilning**

**Tel: 01454 632 456
www.catkennels.co.uk**



Design & Planning

Home Extensions - Change of Use - Floor Plans
Full Planning & Building Regs drawing service
Almondsbury based with successful local projects

contact **Julian Lowther** for friendly professional advice

t:0117 2591059 julian@jfl-planning.co.uk
m:0789 0179546 www.jfl-planning.co.uk

G.V.R PITCHER & SONS

**The Yard
Haw lane
Olveston
Bristol**



**TEL: 01454 619299
MOB: 07989 208964**

Property Care & Improvements

Old Down Cricket Club

Tony Gardner

150 Club Winners March 2023:

£50 Ian Watkins
£15 Diane Buckley
£5 Ben Riggs

Latest £25 Bonus Ball Winners:

18/02/23 Harry Kitchen
25/02/23 Roger Riggs
04/03/23 Russell Knight

150 Club Winners April 2023:

£50 John Welsher
£15 Paddy Gardner
£5 Angus MacDonald

Latest £25 Bonus Ball Winners:

25/03/23 Barry Reeves
08/04/23 Harry Kitchen

May Fixtures at The Park:

06/05/23 1st XI v Old Bristolians Westbury CC
13/05/23 2nd XI v Old Park CC
20/05/23 1st XI v Backwell Flax Bourton CC
27/05/23 2nd XI v Old Bristolians Westbury CC

1.00pm Start, All spectators welcome.



Wild Isles, or Wildlife-less Isles?

"Extraordinary. Dramatic. Beautiful. Sir David Attenborough celebrates the wonders of British wildlife. It's our home, as you've never seen it before".

At our recent committee meeting, we spoke about how skilfully the BBC's latest nature documentary series, *Wild Isles*, brings home the magnificence of British wildlife. However, we also reflected the show did not also accurately

Looking for a role to fit around you?

Imagine a career where you can make a real difference
to people in your community and each day brings new rewards?



Don't be daunted by the prospect of starting something different – especially if you're new to healthcare. In South Gloucestershire we believe in creating development opportunities for all our colleagues and welcome a range of transferrable skills.

Whether your background is clinical or clerical, entry-level or management, we'd love to hear your story!



Talk to us to find out more

sirona.recruitment@nhs.net

0300 124 5444

www.sirona-cic.org.uk/work-with-us/sirona-care-health-south-glos/

Service provided by



BATHROOM & WET ROOM DESIGN & INSTALLATIONS

TILING • GENERAL PLUMBING • PLASTERING

BILLY COOK

WJC PLUMBING & TILING

07748 085 920

WJCPLUMBING@OUTLOOK.COM

• [FACEBOOK.COM/WJCPLUMBINGANDTILING](https://www.facebook.com/WJCPLUMBINGANDTILING)

• [INSTAGRAM.COM/WJCPLUMBINGANDTILING](https://www.instagram.com/WJCPLUMBINGANDTILING)

convey the true state of our natural environment. England is one of the most nature-depleted countries in the world and nature is in real peril. The Chief Executive of the Environment Agency recently warned of a 'silent spring' for wildlife in the UK, unless businesses, governments and individuals act.

At times the challenge ahead can feel overwhelming. However, a journey of a thousand miles begins with a single step. Could you take an action? One a week, one a month or one a year? Breaking it down into lots of small actions makes it much easier. Whatever is achievable for you will help wildlife in our gardens and on these Wild Isles.

Here's some ideas:

- ✓ Plant a tree
- ✓ Create a hedgehog highway/hole (and log it on the Big Hedgehog Map: <https://bighedgehogmap.org/holes-for-hedgehogs-home/map-hedgehog-sighting>)
- ✓ Do No Mow May this month
- ✓ Create a pond
- ✓ Leave some weeds to grow, especially dandelions!
- ✓ Provide water for wildlife
- ✓ Take children or grandchildren on a walk and show them the wildlife,
- ✓ Feed the birds (and keep the feeders clean)
- ✓ Choose pollinator-friendly flowers and plants at the garden centre
- ✓ Avoid using pesticides
- ✓ Sow some wildflower seeds
- ✓ Join a local action group
- ✓ Keep a log book or photograph the wildlife you see and research it
- ✓ Make a log pile
- ✓ If possible keep cats inside from dusk to dawn, especially in spring and mid-winter
- ✓ Pick up litter
- ✓ Support a wildlife charity
- ✓ Write to your MP
- ✓ Buy peat-free compost
- ✓ Take part in citizen science projects like the Big Garden Birdwatch and the Big Butterfly Count
- ✓ Don't squish spiders
- ✓ Leave a messy corner in your garden
- ✓ Build a bee hotel
- ✓ Create a mini-meadow
- ✓ Grow herbs



Making Space for Wildlife is part of the Olveston Parish Council Biodiversity backed and funded initiative.



GARDEN MACHINERY SPECIALISTS
SALES, SERVICE AND SPARES

E-MAIL: themowerdoctor@hotmail.co.uk WEBSITE: www.themowerdoctor.net
ADDRESS: Unit 2-3 The Rearing Unit, Oldbury Lane, Oldbury-On Severn, BS35 1RF
TELEPHONE: 01454 411 701







DEALERS FOR:








PHYSIOTHERAPY
CHIROPRACTIC
PODIATRY
CHIROPODY

"Optimise your Health"

Please Enquire:

Tel: 01454 528608
Email: info@optimuscp.com
Web: optimuscp.com

11 The Plain, Thornbury, BS35 2AG

OLDOWN
TREE SURGEONS

TREE SURGERY AND HEDGE MAINTENANCE

PROFESSIONAL. QUALIFIED. FULLY INSURED.

www.oldowntrees.org

Antony Leicester 07800512408 info@oldowntrees.org



Computer support and solutions for the home and business user.

- PC/laptop repairs
- Virus removal
- Wifi/broadband issues
- Sponsors of Olveston FC

EC COMPUTERS

How can we help? Tel: 01454 281 500 Web: www.eccomputers.co.uk

IT Support/Repairs Office Equipment Print Solutions Telecoms Cyber Security Managed Services Software/Database applications



Green Force

Did you know that..... the world is facing an imminent water crisis?

Demand is forecast to be greater than supply by 40% by 2030. Changes in efficiency of water use could make a big contribution to water problems, including those caused by climate change. Water is the mainstay of all life both plant and animal, so without water life will perish and without water there will be no food. *Governments must agree globally to invest heavily and effectively in water management.* There was a big international conference held by United Nations in New York recently, which made this statement.

In our country water must be redirected from high rainfall areas to top up reservoirs where needed. Could water from Scotland be piped to England? River courses could be changed in upper regions to meander and fill flood plains. There are hundreds of warehouses in office parks and distribution sites with huge roof areas where rainwater could be salvaged and recycled. Desalination of seawater could be a possibility - at a cost. It is estimated that in the UK an individual uses up to 141 litres daily. Compulsory water meters would be a way of alerting us to usage just as smart electricity ones do for energy consumption in our homes.

Have you thought of.....conserving water?

This is something we can all do. We can have fewer and shorter showers and we can turn the tap off while brushing our teeth. A water butt can be installed to save rainwater for our gardens. Every little amount saved reduces not only consumption but the water bill too.

It has been widely publicised recently that our natural water supplies, such as lakes, rivers and reservoirs, are being contaminated by sewage. contaminated river water eventually flows into the sea and changes the natural balance there. Investment and better practice are essential to correct this situation, which is becoming urgent.



Pamela MacLeod
HOLISTIC THERAPIES
REFLEXOLOGY • MASSAGE • AROMATHERAPY

Member of Federation of Holistic Therapists

07765804144

****Introductory Offer****
£10 off any 60 min treatment

| | | |
|-------------------------------|---------|-----|
| FULL BODY MASSAGE | 60 MINS | £45 |
| *AROMATHERAPY MASSAGE | 60 MINS | £48 |
| BACK, SHOULDER & NECK MASSAGE | 30 MINS | £25 |
| REFLEXOLOGY | 60 MINS | £45 |

Please allow at least 15 minutes for Consultation

**A blend of pure essential oils will be tailored to address each individual's needs.*

YOUR PC GURU

COMPUTING FOR 'MERE' MORTALS

01454 616365

- Home visits
- Computer Repair
- Phone & Tablet setup
- Home Wireless & Broadband
- Smart Home Tech
- Complete Mac support

www.yourpcguru.co.uk
Technology Advice & Repairs

JC 4x4 Ltd SPECIALIST IN LANDROVER

SERVICE • REPAIR WORK • DIAGNOSTICS • MOTS • OTHER VEHICLES WELCOME

CALL JAMES: 01454 261067 / 07966 086447



07307 727244

Free Quotes

| | |
|-----------------------|-----------------------|
| Domestic | Radiant heating |
| Commercial | Boilers |
| Breakdowns/ call outs | Radiators |
| Servicing | Plumbing |
| Installations | |
| Warm air heating | LPG, natural gas, oil |



www.edgeheatingandplumbing.com info@edgeheatingandplumbing.com

Events in June

There will be more about each of these events in the June edition, however, here is enough detail so that you can make enquiries or book tickets in advance.

Bingo

We will be holding a bingo afternoon with tea and cakes at St Mary's Olveston on Saturday June 10th at 2.30pm. Contact Debbie oboe-debbie@live.co.uk
Tickets £5

Thornbury Orchestra Concert

Saturday 10th June at 7.30pm, Marlwood School, Alveston. Tickets on the door £10 for adults, with children and concessions free. For more details contact info@thornburyorchestra.org.uk.

A Chilled Evening of Local Folk Music - Pilot Whale Research

Saturday, June 10th, St Helen's church Alveston Church.
Tickets are £10.00, £6.00 for children. This will include two hours of music, a hot dog and glass of wine. To book please email revsrural@gmail.com
FFI <https://www.facebook.com/PilotWhaleResearch/>

Octopus Drama Group present A Bunch of Amateurs by Ian Hislop and Nick Newman.

Wednesday 14th June – Saturday 17th June Christ the King Church Hall, Castle Street. Tickets on sale from Rosie and Rex Gift Shop on Thornbury High St. Tickets £8 (This is an adult only production)

Opera in a Box perform Don Giovanni

Saturday June 18th Rockhampton Village Hall Field 2.30pm
Tickets are £20 from AAGThornbury@gmail.com

Alveston Local History Society

We are planning a day trip to Westbury Court Garden and Dean Heritage Centre on Thursday 18th May. Transport will be by Turners Coaches from Alveston Shops at 9.30am. We will visit Westbury Court Garden in the morning, have lunch at a local pub, then spend the afternoon at Dean Heritage Centre. Returning by about 5pm. Expected cost to be £30 plus lunch.

Please sign-up ASAP and give your money to Frances Houghton
Tel 417048, 2 Beanhill Crescent. Please provide your name, address, phone number and email address.



North Bristol Bathroom Showroom
BS32 4HY

Scan the QR code for a
No obligation
Survey, Design & Quotation
Appointment

North Bristol Bathroom Showroom
Gloucester Road
Almondsbury
Bristol
BS32 4HY

Tel: 0117 980 7419
Email: showroom@nbpsplumbing

Yours Faithfully

Rev. David Moss
Vicar of North Severnside

On the 6th May 2023 we will be glued to our screens watching the Coronation of King Charles. The essential elements of the coronation service used in modern times can be traced back to the crowning of King Edgar at Bath in A.D. 973 the first king of all England. At his coronation, there was a procession, an oath or promise, anointing and investiture followed by the Mass. At King Charles III coronation there will be the investiture, the singing of Zadok the Priest, the consecration of the new king with oil and the giving of communion. The communion bread and wine are a central part of the service. They bear witness to the fact that as Christ gave his life up as a sacrifice for the sins of humanity, so too will the new king be called to lay his life down for his people.

The services on the Coronation Day have now been published, but the words of the sermon of course, still remain a mystery. So I thought, for interests sake, I would do some digging and look back at the words given to Charles I and II at their Coronations. One sermon caught my attention, which was a plea at the coronation of King Charles I, that his time as king should be filled with piety, peace, and plenty.

Piety. A plea to work to keep places of worship open and full.

Peace. A plea for the new king to be a diplomat who works for the resolution of conflict.

Plenty (for all). A plea for the king to make sure the poor are well cared for and well homed.

We are a few hundred years on from 27th March 1644, but I still think that as Charles III is consecrated that we should pray that his reign is blessed with these three things. God Save the King!

Almighty God, the fountain of all goodness,
bless our Sovereign Lord, King Charles,
and all who are in authority under him
that they may order all things
in wisdom and equity, righteousness and peace,
to the honour of your name,
and the good of your Church and people,
through Jesus Christ our Lord. Amen.

MEMORIALS &
MONUMENTS



Supplied & Erected

NEIL VIZARD
01454 419108

BAMFIELD
TREE SERVICES
TREE SURGERY AND LOGS



www.bamfieldtreeservices.co.uk
07761 810483

prestige
event equipment hire

Supplying you with the best equipment to succeed!
CELEBRATIONS & CORPORATE EVENTS

CUTLERY, CHINA, GLASSWARE, LINEN, REFRIGERATION,
COOKING EQUIPMENT, BARBEQUES, FURNITURE & MORE

Fast and Efficient, we stock a wide variety of
equipment covering anything from
WEDDINGS to FESTIVALS.

For a FREE quote please call: 01179613170
info@prestigecateringhire.co.uk
www.prestigecatering.co.uk

**'Indawes
- Outdawes'**

Decorating and
Home Improvements

Painting | Wall Papering
Floor Laying

Martin Dawes 07720 509653
martin.dawes@live.com

Window Cleaning

07976 694744 - 0117 9085794



M. Gray Window Cleaning

Family run business for over 25 years
experience working in the Almondsbury,
Olveston, Aust areas - and nearby.

Email: mgwc1@hotmail.com

Church News

ST MARY the VIRGIN, OLVESTON

| | | | |
|--------|-------------|---|---------------------------------|
| May 7 | 11am | A special service to celebrate the Coronation of King Charles 111 No evening service | Rev David Moss |
| May 14 | 10am 6pm | Holy Communion Holy Communion | Rev David Moss Rev Ann Lloyd |
| May 21 | 10am 6pm | Morning Prayer Holy Communion | Janet McBride Rev David Moss |
| May 28 | 10am 6pm | Holy Communion Evening Prayer | Rev Ann Lloyd Rev David Bone |

Every Saturday in Term Time, 'REFRESH', 4.30-5.30 - Fun, relaxed church
for families, all welcome.

Every Wednesday, Holy Communion, 10am. NB. Clergy may change.

Contact: Rev David Moss, 01454 415190; email: mossds@gmail.com

CHAPELRY OF ST JOHN, AUST

| | | | |
|--------|------|----------------|-------------|
| May 14 | 10am | Morning Prayer | Trevor Cook |
| May 28 | 10am | Holy Communion | Trevor Cook |

Contact: Trevor Cook, 01454 618442

Church Wardens: Jenn Dickens 632312 and Clive Roberts 632238

HOLIDAY LET 6 BERTH HOLIDAY HOME
(2 Bed, 1 Ensuite)



LADRAM BAY
OTTERTON . BUDLEIGH SALTERTON . EX9 7BX

Central Heating . Double-Glazed
Private Beach . Fishing Trips . Cliff Walks
Restaurant . Bar . Live Entertainment
Indoor Pool . Kids Club
Shop . Cafe . Takeaway

Tony Gardner
07889 727 729

greenside
Landscaping

The Cottage, Hortham Lane,
Almondsbury, Bristol BS32 4JP

Greenside Landscaping can offer a wide range of services including:

Artificial Grass ~ Brick & Block Driveways
Decking ~ Fencing & Gates
Garden Design ~ Patios & Paths
Planting ~ Ponds & Water Features
Turving & Seeding ~ Walling

We pride ourselves on flexibility and we strive to meet our client's requirements and budgets.

www.greenside-landscaping.co.uk
Tel: 01594 841559 Mob: 07980 384321
Email: paulbradburn@hotmail.com

BEDLAM
www.bedlambeds.com

- Free local delivery
- Free assembly
- Free disposal of your bed

Divans / Mattresses / Ottoman & Wall beds /
Memory foam & latex mattresses / Beds made
to measure / Pine, Metal & leather beds

Open Tuesday to Friday: 9am-5pm
Saturday: 10am-3pm

Visit our showroom: The Old Post Office
26a Gloucester Road, Rudgeway, Bristol,
BS35 3RY (by the speed camera)

01454 617 277 or 07887 853479

MORAS
Decorating Services

ANDREW MORAS
Quality Painting and Decorating Services

For your **FREE** no obligation quote contact Andrew:

07962069036

✉ **andrew@morasdecorating.co.uk**
www.morasdecorating.co.uk

Tavira
Algarve, Portugal
3 Bed Apartment
"can accommodate up to 8 people"

Modern 3-bedroom apartment in picturesque & historic Algarve town.
2-bathrooms including one en-suite, 2-balconies & roof terrace.
Fully furnished, sleeps 6-8. Easy walking to thriving town centre.
Close to railway station, golf courses & beaches. 30 minutes drive from Faro. Ideal for families or golfers. Tel: 07889 727729
Email: anthonyar@aol.com - www.aminpadtavira.co.uk

TAVIRA - EAST ALGARVE
EASYJET & RYANAIR
NOW FLYING TO FARO
FROM BRISTOL

Thornbury Stairlifts
SALES SERVICING & REPAIRS

• New & Re-conditioned Stairlifts & Warranty
• Removals & Relocations
• Free Surveys & Quotes – No Obligation
• Rentals for Straight Stairs

Independent, Professional & Friendly Advice
Over 24 years practical experience

Independent Stairlift Specialist
01454 413748 07833 318722
www.thornburystairlifts.co.uk

ST MARY DE MALMESBURY, LITTLETON-ON-SEVERN

| | | | |
|--------|-----|----------------|---------------|
| May 14 | 9am | Morning Prayer | Rev Ann Lloyd |
| May 28 | 9am | Holy Communion | Tracey Black |

Contacts: Tracey Black 417660 and Tim Pyper 416422 /07802 419451

ST JOHN THE EVANGELIST, ELBERTON

| | | | |
|--------|-----|----------------|-----------------|
| May 14 | 9am | Morning Prayer | Judith Heybyrne |
| May 28 | 9am | Holy Communion | Judith Heybyrne |

Contacts: Judith Heybyrne 616725 and John Gunnery 413225

OLVESTON AND TOCKINGTON METHODIST CHURCH

| | | | |
|--------|------|-----------|---|
| May 7 | 11am | St Mary's | Village Service to Celebrate the Coronation of King Charles 111 |
| May 14 | 10am | Olv Ch | Morning Worship with Holy Communion led by Rev Dr Simon Edwards |
| May 21 | 10am | Tock Ch | Morning Worship led by Mrs Alison Smith |
| May 28 | 10am | Olv Ch | Morning Worship led by Mrs Rosalie Doyle |

Contact: Rev Dr Simon Edwards 418176,
simon.edwards@methodist.org.uk

THE VINE House of Prayer, Pilning Street, Awkley BS35 4HL Meeting at 11am every Sunday and on the 1st and 3rd Wednesdays of each month at 2.30pm.

Contacts: Mike and Barbara Matthews, tel. 07512 917229 or email: thevine_awkley@hotmail.com

THE OASIS CHURCH, OLD DOWN

Services at 6.30pm every Sunday. All are welcome.

Contact: Neil Mobbs, cnmobbs@hotmail.com

AUST EVANGELICAL and LITTLETON EVANGELICAL CHURCHES

Contact: Danny Bamfield 01454 419324 e-mail danny@thebamfields.co.uk

RC CHURCH OF CHRIST THE KING, Thornbury
 Mass on Sundays at 9.30 and 10.30am
Contact: 01454 412223, www.ctk-thornbury.org.uk

SOCIETY OF FRIENDS (QUAKERS), Thornbury
Contact: Chris Willmore chriswillmore@blueyonder.co.uk

Diary Dates for May

Information believed to be correct at going to press.

| | | | |
|----------|--|-------------------------------|-----------------------|
| 1 Mon | Bank Holiday Monday Movies Alveston Gardens Assoc. 'Buying Abroad' | 7.30 7.30 | S+M JHA |
| 2 Tues | Over 60's Coffee Morning every Tuesday Citizens Advice, every Tuesday Macular and Low Vision Group | 10-12 10-12 10.30 | DGCL TCC TMH |
| 3 Wed | Table Tennis every Wednesday | 7pm | PH |
| 4 Thurs | Local Elections Thornbury Farmers' Market Coffee Shop 'Good Afternoon Choir', every week | 9.30 9-12 1-3 | PH S+M URC |
| 5 Fri | Coffee Morning Haven Memory Café Coronation Coffee Morning | 9- 11.30 10.15 10.30 | TMC URC LVH |
| 6 Sat | Coronation Day TV screening at St Mary's Church | | |
| 8 Mon | Bank Holiday. Cream Teas on Tockington Green | 2pm | TMC |
| 9 Tues | Thornbury Memory Café WI Aust Parish Council | 10.15 7.30 7.30 | TMH PH EVH |
| 11 Thurs | Coffee Shop Olveston Parish Hall AGM Littleton Parish Hall AGM | 9-12 7.30 7.00 | S+M OPH LVH |
| 13 Sat | Coffee Morning at Olveston Methodist Hall | 10.30 | OMH |

| | | | |
|----------|---|--------------|-----------|
| 15 Mon | SV Flower Club demo by Sally Taylor | 2pm | SMCH |
| 16 Tues | Aust Parish Council | 7.30 | EVH |
| 18 Thurs | Coffee Shop Thornbury Farmers' Market | 9-12 9.30 | S+M |
| 19 Fri | Haven Memory Café | 10.15 | URC |
| 20 Sat | Aust Pilgrimage Coffee Morning at Olveston Methodist Hall | 09.30 | OMH |
| 22 Mon | Men's Walk and Chat Group. Meet Tock Green SV Flower Club Practice | 9.30 2pm | SMCH |
| 23 Tues | Thornbury Memory Café Olveston Parish Council | 10.15 7pm | TMH PH |
| 24 May | Alveston History Society. 'Child Care in Earlier Times'. | | |
| 25 Thurs | Coffee Shop | 9-12 | S+M |
| 27 Sat | Coffee Morning at Olveston Methodist Hall | 10.30 | OMH |
| 29 Mon | Spring Bank Holiday | | |

KEY: **AMC** - Alveston Methodist Church, **AMH** - Alveston Methodist Hall, **CS** - Castle School, **CTK** - Christ the King, **DGCL** - Daldry Gardens Community Lounge, **EVH** - Elberton Village Hall, **JHA** - Jubilee Hall Alveston **LVH** - Littleton Village Hall **OC** - Oasis Church, Old Down, **OMC** - Olveston Methodist Church, **OMH** - Olveston Methodist Hall, **OPH** - Olveston Parish Hall, **QAMP** - Queen Alexandra Memorial Pavilion, Old Down, **S+M** - St Mary's Church, **SMCH** - St Mary Church Hall Thornbury, **TCC** - Turnberries, **TMC** - Tockington Methodist Church, **TMH** - Thornbury Methodist Church Hall, **URC** - United Reform Church

Contact details for any clubs or organisations in the Meeting Point area can be found in the Meeting Point Directory on the community website: www.olvostonandaust.com. If you would like to update your organisation's details, please email: meetingpointsecretary@olvostonandaust.com

Advertisements Neither Meeting Point, its editor, nor management committee accept any responsibility or give any guarantee in case of any dispute or claim as to quality, condition or delivery of commodities or services advertised in this magazine. It is not to be taken that publication implies recommendation. It is always advisable to check prices when ordering goods or services.

Views expressed by contributors are not necessarily those of the editor or Meeting Point magazine
Copyright Meeting Point 2023. Copyright remains with the author(s) and Meeting Point. No part of this publication may be reproduced or transmitted in any form without the prior permission of the copyright owners.

Meeting Point is printed by Motion Printing Ltd.



Matrix

Vehicle Solutions

- Valeting
- Detailing
- Based In Olveston
- Machine Polishing
- Ceramic coating
- Fully accredited/insured



Tel. 07852 127772
www.matrixvaleting.com
matrixvaleting@hotmail.com