

Meeting Point



May 2022

TRUE BLUE TAXIS
(OLVESTON)

Local Taxi Company



Honest, Reliable and Safe

Cash or Card Payments



Mobile:

07967 042794

Top-to-Tail Housekeeping

- Professional
- Dependable
- Comprehensive service

**Trading
Standards
Accredited**

**Felina
Contract Cleaning**

01454 201562
07790 050187
cleaning@felina.biz
www.felina.biz



Weddings | Funerals | Bouquets | or just because...

**Beautiful
flowers for any
occasion...**

Our Shop is open Tuesday to
Saturday ~ 9.00am to 5.00pm

Taking walk in and phone orders

Delivering to BS35 and
surrounding areas ~ Tuesday to
Saturday from 9.00am to 5.00pm

Holding socially distanced
meetings for weddings and
memorials should you wish to
discuss plans

Please call for prices or pop into
the Shop in The Arcade,
Thornbury



t: 01454 416111

e: flowers@joliesfleurs.co.uk



**THORNBURY
Chiropractic
CLINIC**

www.thornburychiropractic.co.uk

The Georgian House, 6 The Plain

Chiropractic

Johnatan Williams MSc DC

Carol Williams MSc DC

Acupuncture

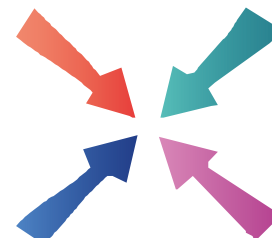
David Sanders Lic Ac. M.B. Ac.C

Massage

Josie Cole MTI

*Open weekdays 8.30am-7pm
and Saturday mornings*

01454 418259



Meeting Point

Volume 46, Number 8, May 2022

The community magazine for the villages of Olveston,
Tockington, Old Down, Lower Hazel, Awkley, Ingst, Aust, Elberton and Littleton upon Severn

EDITOR:

Marelin Orr-Ewing
Courtlands
Olveston
Bristol BS35 4DU
Tel: 01454 610081
[meetingpointeditor@
gmail.com](mailto:meetingpointeditor@gmail.com)

ASSISTANT EDITOR:

Angela Williams
Ashlea
Haw Lane
Olveston
Bristol BS35 4EG
Tel 01454 612850
[meetingpointmagazine@
gmail.com](mailto:meetingpointmagazine@gmail.com)

ADVERTISING:

Bernard Amos
Tel: 01454 620388
[meetingpointadvertising@
gmail.com](mailto:meetingpointadvertising@gmail.com)

Publication date
1st of each month

Material for June 2022
to the Editor or Deputy Editor
by May 9th 2022

From the Editor

If you are experiencing a sense of 'déjà vu' looking at this month's cover, you are right, you have seen it before. The painting was commissioned to commemorate the 200th Anniversary of the Olveston Chapel and used as our April 2020 cover. An article in this month's edition explains what happened and why, over two years later, we are using it again.

I am really pleased to say that the Church News and Diary pages are now almost back to pre-pandemic size, as more and more events are scheduled in our area. We have got details of several concerts, a couple of films (one of which I really want to see), a quiz night and a pilgrimage. Find out about these events, and more, within the magazine.

The cover this month is by Peter Floyd

Meeting Point Founded in 1976 by the Anglican and Methodist churches in Olveston, near Bristol.

**Meeting Point magazine and Meeting Point Directory are online at the
Community Website: www.olvostonandaust.com**

Thornbury Motors



- New and Used car sales
- Servicing, repairs and MOTs on all makes



thornburymotors.co.uk

01454 412535



Grovesend Road
Thornbury
Bristol
BS35 2EF



SAVAGE ASSOCIATES

Accountants·Business Advisors
Corporate & Personal Tax Consultants

The Coach House, Aust Road
Olveston, Bristol BS35 4DE
Tel 01454 610388 Fax 01454 201541

for an initial consultation please contact:
edd.savage@savageassociates.co.uk

Vicarage Farm Holistic Therapy Centre

Bringing balance back
into your life.
Offering a wide range of
Holistic Treatments.

Hypnotherapy

A safe and effective treatment: to
remove stress, anxiety, depression
and phobias. Allowing positive and
powerful changes in your life.

Tel 01454 614390

www.vicaragefarm.org

A Small Step

Martin Gibson

One of the roles of a Parish Council is to protect and improve the environment for the benefit of residents. Many of these activities are obvious and can be seen by all, such as grass cutting and maintenance of our three play areas. There are some small matters, however, which might pass unnoticed. One of these is the recent improvement to the stile on the footpath leading from Olveston Green, alongside Ty Nant and Sunnyside, down to the back of Olveston Court.

It is an ancient stone stile (although not listed), one side of which is relatively low and easy to climb over for both dogs and elderly people, but the other side is another 12 inches deeper, making access extremely difficult. Paramount to finding a solution was the need not to alter this heritage monument.

At the end of March, a local stonemason, on behalf of the Parish Council, created a new step in local stone, on the lower side, resulting in much improved 'climbability'. Sometimes, little things matter.



D. YOUNG
GARDEN SERVICES
Fully Qualified with over 16 years Experience
Grass Cutting Hedge Cutting Turfing Fencing
General Landscaping

Tel: 01454 416206 Mob: 07545 131488
Email: d.younggardenservices@hotmail.com

MD Aerials
Call Michael Dagger
T: 01454 418 341 M: 07817 304 236

Freeview – Freesat – Sky – DAB Aerials

Wall mounting LCD & Plasma
televisions setting up & tuning

mike@mdaerials.co.uk
www.mdaerials.co.uk

T. EDWARDS PLANT
Digger and Driver Hire

- Site/garden clearance
- Footings
- Drainage/soakaways
- Driveway preparation
- Stump removal
- Fencing & turfing
- Narrow access equipment

Price or day work t: 07900 372349
t.edwardsplant@gmail.com
CPCS/CITB qualified & insured

Divine
Bathrooms & Wet Rooms

07584 666154
Email: info@divinebathrooms.co.uk
Web: divinebathrooms.co.uk

iphe
Registered Plumber

S.J FARR
KITCHEN FITTING
SERVICES

Mobile: 07915673649

Our Associated Services Include:

- Plumbing
- Wall & Floor Tiling
- Decorating
- Plastering

City & Guilds Qualified

Geoff Gulliver
Carpentry & Joinery, Littleton
ALSO
UPVC Doors, Windows and
Conservatories. For a very
competitive **FREE** estimate

Ring (01454) 414947

Aust Parish Council

Tree Planting



As part of the Parish Council Jubilee celebrations, we have planted two oak trees, one in Elberton and the other on the new flood defences at Aust. Residents gathered to mark the planting of the tree in Elberton whilst two of the younger residents wielded the spades. (See photograph) If you have visited Woodwell Meadows nature

reserve in Littleton lately, you will also have noticed some new trees in the lower meadow, which were put in place by South Gloucestershire Council as part of their ongoing management of the site.

Jubilee Grant Success

We are pleased to announce that the Parish Council has been successful in gaining grant funding of £1450 from South Gloucestershire Council to fund the Jubilee celebration event on Sunday 5th June. The event will take place at the Boar's Head in Aust – many thanks to them for agreeing to host. It will include family-friendly games during the day as well as evening entertainment. More details will be posted on the parish website and noticeboards when available, but in the meantime please save the date!

South Gloucestershire Local Plan

South Gloucestershire Council has recently been consulting on the next phase of the Local Plan. This is a strategic document which will shape development across the county in the coming years. Aust village is one of the areas identified for some small-scale development, but the plan does not include any proposals for Elberton or Littleton. Since the parish is within the North Bristol green belt, we are protected from the larger scale development which has been seen around some small villages in other parts of the county.

Parish Councillors have considered the Local Plan, but concluded that, until more detail is available, it is difficult to assess the impact it may have on Aust

Phoenix Flooring Limited



**Carpets • Luxury Vinyl Tiles • Laminates
Engineered Wood • Room Size Remnants
Vinyls • Artificial Grass**

Tel: 01454 620707

email: enquiries@phoenixflooringltd.co.uk

www.phoenixflooringltd.co.uk

**Unit 15 Hemingway Business Centre Walker Way,
Thornbury BS35 3US**

parish. We will of course be keeping a close eye on any future consultations as well as any subsequent planning applications.

Annual meeting of the Parish Council

The next council meeting will be on Tuesday 10th May at 7:30pm in Elberton village hall. This is the Annual Meeting, at which the Chairman for the coming year is elected from amongst the existing councillors. Residents are, as always, very welcome to attend.

Emma Pattullo, Clerk (01454) 837271 austparishcouncil@gmail.com

THORNBURY Carnival

It has been a challenging couple of years for the committee, who were forced to cancel the Carnival in 2020 when the pandemic hit. Although disappointed, they pushed ahead with plans for 2021, only to have to pull the event in the eleventh hour when restrictions were extended by four weeks last summer.

The committee has taken the difficult decision to remove the Parade from the programme again this year. Liam Williams, Chair of Thornbury Carnival Committee, explained that, historically, the Parade has been very resource-intensive, and the committee is just not in a position to commit to delivering it this year or in the near future. Instead, they are putting all their efforts into the activities taking place on the Mundy Playing Fields. As Liam said, *"The event will be different this year, different but still brilliant fun!"*

This year the Carnival will encompass two separate events – Thornbury Carnival Presents 'Swing in the Park' on Friday 1st July from 6pm until 10pm and Thornbury Carnival 'The Main Event' on Saturday 2nd July from 11am until 10pm. The Saturday event will feature a main stage with a wide range of professional acts plus a fully licensed bar, a number of local food concessions, a funfair and free children's activities.

In addition, building on previous years success with vintage vehicles, this year will feature a Show 'n' Shine for the first time. A wide range of unique and interesting vintage vehicles have already been secured, many of which have not played a part in the Carnival previously.

Contact Information: Sarah Openshaw 07847 035 246 or marketing@thornburycarnival.co.uk



2 Men Went To Mow

All Aspects of Garden Maintenance, Plants & Shrubs Supplied Garden Rubbish Removal, Fully Insured

Garden and Tree Service Tel: 07956 311901
Local, Friendly and Reliable Email kev@2menwenttomow.co.uk

Tree Surgery (NPTC Qualified)
All Types of Tree Work Undertaken
Contract Grass Cutting
Beds & Borders Maintained
Pruning and Hedge Cutting
Planting

FREE ESTIMATES!

L. & J. GULWELL

Independent Family Funeral Directors

1 Quaker Lane • Thornbury

Tel: (01454) 418779

24hr Service

email: info@funerals.uk.net www.funerals.uk.net

Private Chapels of Rest



COMPANION AND DRIVING SERVICE

Now taking bookings in your area!

- For people of all ages unable to drive but wish to remain independent
- Supported trips to the doctor, hospital, shops, bank, hairdresser, vet, etc.
- Social outings, holidays, help at home and much, much more
- DBS checked and First-Aid trained
- Dementia friendly
- Wheelchair Accessible Vehicle
- Fully Licensed

To book your Daisy
07951 079 558 / 0333 014 6211
northbristol@drivingmissdaisy.co.uk
www.drivingmissdaisy.co.uk

Top quality Nursing and Residential Care



Beech House

Beech House Care Home provides excellence in all aspects of care for all our residents, offering the best in nursing care for the elderly and residential care for people with a diagnosis of dementia.

Our unique care service includes:

- beautiful gardens
- purpose built homes with 24/7 air circulation
- spacious rooms and wide corridors
- top quality chefs
- television with DVD and telephone in each room
- wheelchair provision at no additional cost
- high technology baths and walk-in showers
- regular minibus trips
- programme of interesting and stimulating activities

RECENTLY RATED Outstanding by Care Quality Commission



To arrange a visit, telephone **01454 412266**
For more information see www.bristolcarehomes.co.uk

Bristol Care Homes
providing a unique care service



Olveston Parish Council

Pat Savage

Olveston Parish Council The Queen's Platinum Jubilee Celebrations

THURSDAY 2ND JUNE

9pm Lantern Parade
Set off 9.30pm Meeting at Olveston War Memorial to Tockington Green
Glow sticks will be available at the event or bring your own lantern

FRIDAY 3RD JUNE

11:30 Parade setting off from Olveston War Memorial
Classic Cars
Horses
Uniform Groups

12:15 Speeches and Refreshments
Olveston and Tockington Parish Hall

12:45 Soap Box Derby

1:30 - 7:30 Jubilee Garden Party
Pavilion Field, Tockington Manor School
Fun filled afternoon for all the family
Community Stalls, Face Painting, Licensed Bar & Live Music
Football, Rounders, Tug of War, Jubilee Jog, Dog Show, Pudding Contest...

5:00 Tea Party — bring your own
(Hog roast, pizza & drinks available to purchase)

7:30 Barn Dance Olveston and Tockington Parish Hall
Tickets £15 available from Olveston Stores, Crusty Loaf & Eventbrite
queensjubileeolveston.eventbrite.co.uk

SUNDAY 5TH JUNE

11:00 Commemorative Church Service at St Mary's Church, Olveston
A special service to celebrate the Queen's Platinum Jubilee featuring music from her Coronation in 1953

Volunteers wanted!
For more information regarding events or to get involved please email pat.savage@olvestonparishcouncil.gov.uk

Olveston Parish Council



www.olvestonpreschool.co.uk/pilning-site

Pilning Pre-School

NOW OPEN!

Offering amazing childcare to children aged 2-5 at the heart of our local community.

Pilning Village Hall
Open 9:00am - 3:00pm
Tel: 01454612074

Find us on Facebook

As I sit compiling this article for Meeting Point it is the beginning of April. However, by the time the magazine lands on your doorstep it will be the end of April with just over five weeks to go to the Platinum Celebrations! Apologies therefore if you feel that not much is happening in the Parish apart from the forthcoming celebrations! So, here goes.....

Programme of Events

We are really looking forward to seeing everybody at all the fantastic events we have planned for the Queen's Platinum Jubilee on 2nd/3rd June, including the Parade from St. Mary's Church to the Parish Hall. There'll be classic cars, uniformed groups, horses and much more. The poster advertising the events we have planned appears on the previous page.

Old Down Celebrations

Old Down will be holding a Jubilee Street Party on Thursday 2nd June. Activities on the day will include children's games, competitions and more. Please do keep an eye on the Old Down Neighbours' Facebook Page and The Old Down Community WhatsApp page for more details.

Volunteers

You will all appreciate that an event such as we have planned for the Jubilee will not be possible without the aid of volunteers. If you feel you can help in any way either on the day or in the build up to the event, please contact one of the following:

*martin.gibson@olvestonparishcouncil.gov.uk
lyndsey.gethin@olvestonparishcouncil.gov.uk
pat.savage@olvestonparishcouncil.gov.uk
martyn.suker@olvestonparishcouncil.gov.uk*

Road Closures

To keep everybody safe and to ensure we all enjoy the events, we have asked South Gloucestershire Council (SGC) for permission to close vehicular access to The Street, New Road and part of Upper Tockington Road for the duration of the parade – approximately 40 minutes. To limit the disruption the roads will be closed for the minimum amount of time and be reopened as soon as the parade has passed and it is safe to do so. It's also proposed that part of Upper Tockington Road (from the bend at Highbury and Westfield down to the Parish Hall) will remain closed for about one hour for the Soapbox Derby starting at 12.45. For the safety of the afternoon's activities, we expect to close a small section of Washingpool Hill Road outside Tockington Manor School between 13.30 and 18.00.

More details will be available closer to the event and once we have agreement from SGC.

 **PawsPetCare**
...simply for the love of animals

Providing care for your pets
when you need it

Contact Helen for a friendly and reliable service
07493 153520 or enquiries@pawspetcare.com
www.pawspetcare.com

Frontline Martial Arts

Traditional Martial Arts / Taekwondo

Mighty Mites (under 10's): Fridays 4.30-5.15pm at
Juniors (ages 10-13): Mondays 7.15-8.15pm
Adults/over 13's: Mondays 8.15-9.45pm
at Alveston Youth Centre



Tel: 07771 692222
www.frontline-ma.co.uk

SEVERN SIDE TAXIS

SIX SEAT COMFORT
AIR CONDITIONED CAR

AIRPORTS
BUS STATIONS



HOSPITALS
EVENINGS OUT

RING STEVE WARD
07879 601011

THE WHITE HART INN Olveston



Traditional 17th Century English Pub

Catering for Parties and Functions
Wide variety of cask & keg beers
Skittle alley & pool table available
Book now for Skittle Matches
Award winning courtyard garden

Telephone: 01454 612175

FRANCIS DESIGN & BUILD Carpentry & Building Services

For all aspects of carpentry

Doors, Skirting, Kitchens, Fencing,
Decking, Stairs, Timber frame etc.

Call Craig on 07970 514409
(or, if busy)

email: craigyoung0308@live.co.uk



Marlwood's Got Talent

Marlwood's toe-tapping, show-stopping, heart-warming Marlwood's Got Talent made an incredible 'sold out' return on 11th March. The news of the event had already spread beyond the borders of the Severn Vale before it had even begun. First with a shout-out on BBC Radio 1 early that day (thanks to Eleanor B of Year 9). Then, just before the show started, BBC Radio 2's Sara Cox interviewed Andrew T, one of the FOMS organisers, during her All Request Friday show. Meaning that by 7pm, the place to be that night was Marlwood School!



The audience was wowed by the huge range of talent Marlwood has to offer, including vocal acts, stand-up comedy, dance performances, piano recitals, electric guitar solos and... a world record attempt to peel an orange in the fastest time. Support acts included the Olveston Parish Players singing a piece from their recent performance of Calamity Jane, plus a very funny Teacher Act.

Left to right: George (Audience vote winner), Mrs Morgan (judge), Maddie (Judges' winner), Mrs Payne (judge), Mr Richards (judge) and Mr Hulin (host)
Photo: Imogen Roberts

Host Mr Hulin led us through the evening and the acts were judged by teachers Mr Richards, Mrs Payne and Mrs Morgan. Maddie from Year 11 won the Judges' vote, singing 'She used to be mine' from the musical Waitress, whilst George from Year 10 won the audience vote with his rendition of Chuck Berry's 'Johnny Be Good'. It was also wonderful to see students supporting and encouraging each other throughout the evening – it's not easy to get up on stage and perform in front of a packed hall.

Special thanks go to companies The Wave, Blossom & Bee, Olveston Stores, Celebrations of Thornbury, Paragon Customer Communications (O2 prize), Pink Sorbet, Crusty Loaf Bakery, and Lee's Mend a Shoe who all donated prizes for the raffle. Thank you to all the FOMS volunteers who organised the event, brilliantly led by Lucy S. Thanks too to the pupils who supported

Severnside Heating & Plumbing



- Installations
- Servicing
- Repairs

Working locally since 2003. An experienced heating and plumbing engineer. For a no obligation quote please call Mike
Mob: 07554 825813 Tel: 01454 613780



Sockets, Lights, Security Lighting, Landlords Reports, Inspection & Testing, Consumer Units, Electric Heating, Rewires, New Builds, Garden Electrics, Car Charging Points, Solar PV, and More..

Your Local Electrician Richard Corney



01454 633 336
laelectrical.com

Baby and Toddler Music!



Have fun and enjoy music with your child
Meet others and share music as well as a cuppa and maybe cake
Suitable for ages from 0-4 with a supporting adult of any age

10:30am Wednesdays in Severn Beach Village Hall

£2-5 for an hour session dependent on numbers

FFI Contact Janet Harrison janet_harrison@outlook.com or 07562 212435 or turn up to a session



**"The Friendly pub
where you arrive as
our Guest and leave
as our Friend"**

BOARS HEAD AUST

01454 632278

- Your local friendly Village pub
- Open 7 days a week
- Food Served from 12.00pm to 9pm every day
- 1st Friday of the month is Quiz Night
- Breakfast Available
- Chefs Table Food Experience
- Parties Catered for
- Open Log Fires
- Real Ales and Premium drinks available
- 5 star Food Hygiene rating

MAIN ROAD, AUST, BS35 4AX

backstage, they did an incredible job. MGT really was a fantastic community event, and all funds raised will go towards the refurbishment of the school's tennis and netball courts.

More information about FOMS is on our Facebook page: [@Friends of Marlwood School](https://www.facebook.com/Friends-of-Marlwood-School) or please email marlwoodfriends@gmail.com.



Making Meadows

As readers of Meeting Point might remember, a second major theme for the Making Space for Wildlife project is habitats. One very important but much diminished habitat across the UK is grasslands. Meadows and the variety of plants they contain are very beneficial to wildlife, in particular insects and birds. With this in mind, and with the agreement of the Parish Council, we have identified two grassed locations in the parish where we would like to create small meadows by encouraging non-grass species to grow. The two locations are the playing fields in Vicarage Lane and Old Down. The meadow areas will be situated around the perimeter of the fields, so they should not get in the way of other activities.

During early April we removed several small sections of grass turf in each area and sowed wildflower seeds. The idea is to create numerous bare patches of soil in the selected areas, in the hope that over time the wildflowers will establish amongst the grass and ultimately (fingers crossed) become more dominant in these areas. It's a bit experimental as this is not the 'proper' way to make a meadow, but we thought it was worth a try. This will work alongside less grass cutting in these areas.

Making Space for Wildlife is part of the Olveston Parish Council Biodiversity backed and funded initiative.

Alveston Gardens Association



Summertime in Western Scotland with Mary Fenton

Monday 2nd May 2022
7.30pm in Alveston Jubilee Hall

All welcome – Visitors (£3)

motion
motiondesignsprint

Do you know we print the Meeting Point Magazine?

We also print for lots of local clubs, events and businesses.

Based in Severn Beach we offer convenient off-road parking right outside our door!

We print everything from Wedding Stationery to Business Stationery

Our professional design and modern printing techniques have saved time and money for lots of people.

Fast, efficient and professional.

Why not let us print for you?

01454 631289
info@motionprinting.co.uk
www.motionprinting.co.uk

ALMONDSBURY PHYSIOTHERAPY AND SPORTS INJURY CLINIC

Louise Brinson
Chartered Physiotherapist, hpc reg

Almondsbury Surgery, Sundays Hill
Almondsbury, BS32 4DS

Tel: 07786915442
Fax: 014540615745
E-mail: physiolouise@hotmail.co.uk

Also at Aztec Spa Leisure Club

ACE1
Window & Gutter Cleaning

Window Cleaning
Gutter Cleaning & Repair
Fascia & Soffit Cleaning
Conservatory Roof
Solar Panel Cleaning
Power Washing

M: 07590 201264
T: 01454 436162

Gleaming Insurance

Olveston and Tockington Parish Hall

A great venue for:

- Fitness
- Parties
- Public events
- Music & Dance

07780 515317

Check availability & book online at www.olvostonparishhall.co.uk

"Our newly decorated Hall"





Severn Bridge Road Race May 8th

Between 10.00 and approximately 13.00 preparation for the race is undertaken. Although no roads are closed, junctions are shut down by accredited marshals each lap for a few minutes when the race passes that point. These marshals have police authority to stop traffic with the STOP sign they hold.



13:30: The race convoy and riders will move out from Marlwood School and the race begins. The race convoy will include several lead vehicles and officials' vehicles which are identified by signage and yellow flashing lights. They are supported by motorcycle outriders warning traffic of the approaching race. Competitors are required to obey the rules of the road and there are race commissaires in following vehicles that can remove riders that do not adhere to this.

13:40: The riders will be approaching their first ascent of Old Down Hill, which they will go up 11 times in total. This is the best position from which to watch the race. Please do not park on Old Down Hill, however you can park in Queen Alexander Memorial Pavilion (QAMP) which is on the right at the top of the hill.

13:45: The riders will pass through the finish point - The Crescent, Old Down - for the first time. This is also a good point to watch the race. The race finishes after 10 further laps.

15:00: This is about the mid-point of the race and there is likely to be a breakaway group a few minutes ahead of the main bunch of riders.

16:15: Approximate race finish time. There is likely to be several groups of riders that finish over a period of up to 5-6 minutes.

16:30: Finish area is cleared of riders and return to Marlwood School.

17:30: Presentation to riders at Marlwood School.

Bristol Carriage Masters

- Religious or non-religious funerals
- Bespoke funerals for burial or cremation
- Fully guaranteed pre-paid funeral plans
- Direct cremations



177 Crow Lane, Henbury, Bristol, BS10 7DR
Telephone: 0117 950 8066
Website: www.bcm-funerals.co.uk
Email: admin@bcm-funerals.co.uk

Windmillcare Homes

— great places to Live



Windmill House

The original, elegant home in a delightful rural setting with 2 acres of beautiful gardens delivering unrivalled care

01454 413818



OSBOURNE COURT

Our brand new purpose-built home providing exceptional specialist dementia care in the heart of the village of Stoke Gifford

0117 944 8700

Residential, Short-term Respite
and Day Care available

enquiries@windmillcare.com

or www.windmillcare.com

'Indawes - Outdawes'

Decorating and
Home Improvements

Painting | Wall Papering
Floor Laying

Martin Dawes 07720 509653
martin.dawes@live.com

Your advert could be
here and reaching
1,500 households

Contact Bernard
[meetingpointadvertising@
gmail.com](mailto:meetingpointadvertising@gmail.com)

Olveston and Tockington Methodist Church: The 200th Anniversary of Olveston Chapel

In the March 2020 edition of Meeting Point, we gave notice of the planned celebration - in April - of the 200th anniversary of the founding of Olveston Chapel. Full details were due to be provided in the April magazine, with a weekend of events, setting out the story of the Church and its place in the life of the community. In honour of the anniversary, a new portrait of the Chapel, painted by Peter Floyd, was commissioned, and used as the April 2020 cover. Alas, by April, we were writing instead: *"In the light of the current concern about the coronavirus infection, we have reluctantly made the decision to postpone"*. Hopes of later in the year, or of May 2021, met a similar fate.

This year we aim to proceed on Sunday 8th May, although on a much smaller scale than originally planned. There will be a Service of Thanksgiving in the Chapel at 4pm, followed by light refreshments in the Hall afterwards. The service will be led by our own minister, Dr Simon Edwards and the guest preacher will be the Rev Dr Leslie Griffiths, also known as Lord Griffiths of Burry Port, who hits the headlines from time to time as a member of the House of Lords. Leslie was due to be with us in 2020 and has assured us that he will be delighted to visit us this May instead.

We hope that many of you will wish to join us for this special occasion.

Cancer Research Quiz Night

Thornbury and District Fundraising Group for Cancer Research UK is holding a Quiz Night, with a Fish and Chip Supper, at Manorbroom Primary School, Park Road, Thornbury BS35 1JW on Friday 20th May 2022. The quiz starts at 7.30pm sharp - so please be there by 7.15pm at the latest.

Tickets are £12.50 per person which includes both admission and a fish and chip supper. Tickets available from Tony Flintoff on 07707159645 or any Committee Member. Please let us know if anyone on your quiz team has any specific dietary requirements.

There will not be a bar, so please bring your own drinks (glasses will be provided). There will also be an excellent raffle in aid of the charity.

Don't delay - tickets for this event are limited and will sell out quickly!

Tel: 01454 885766
Mob: 07724 166917

Ridge

Roofing and Property Maintenance

Roofing ❖ Chimney Repairs ❖ Lead Work
Guttering ❖ External Painting
General Maintenance ❖ **FREE Estimates**



D-CR

DOMESTIC APPLIANCES



DOMESTIC APPLIANCE REPAIR SPECIALIST

- WASHING MACHINE
- TUMBLE DRYER
- DISHWASHER

- FRIDGE FREEZER
- COOKER
- HOB OR HOOD

Fast, friendly and efficient service
Sales - Service - Repair

Tel: 01454 850522 - Mobile: 07917441539
Email: d-cr@live.co.uk - Web: www.d-crdomesticappliances.co.uk

EARTHWORKSUK

We offer a range of recycled and quarried products including 6F5, type 1, topsoil and decorative stone. These can be delivered straight to you on site or collected from us at our yard in Cromhall. Check out all we can offer you on our website or contact us using the details below.

Skip Hire

Top Soil

Recycled Aggregates

Grab Lorry Hire

Tipper Hire

info@earthworksuk.co.uk www.earthworksuk.co.uk
Orders Line: 07782472727
Bristol: 01179 828265 - South Glos: 01454 501037




Lending with Heart and Mind

South Gloucestershire Council fund
a not-for-profit loan scheme for homeowners
and landlords*.

We understand the expense of maintaining
your home and we work with you to take the
stress out of funding repairs, improvements or
adaptations.

We see you as an individual, not a credit score.
Our knowledgeable team of advisers will guide
you through the process of applying for a home
improvement loan.

For a no-obligation assessment
or more information visit
www.lendology.org.uk or call 01823 461099

Heatherton Park Studios, Bradford on Tone, Taunton, TA4 1EU

*subject to eligibility

Adrian Holmes

Bernard Amos

Adrian arrived in Olveston 12 years ago, via a journey with numerous twists and turns. He was born in Plymouth and started his working career in the timber trade, selling mainly hard woods such as teak and mahogany. He was a sales representative out 'on the road' and had a lot of dealings with boat builders all along the south coast which were typically on the banks of little creeks and made small timber fishing boats. That's where his love of traditional boats and sailing developed. He describes that time as the end of an era for the small, traditional, timber built sailing boats, but his love of sailing small dinghies has remained a passion ever since and he eventually rose to the dizzy heights of Commodore of the Baltic Wharf Sailing Club in Bristol.

With an interest in dealing with people face to face, he has remained in sales and marketing. In 1975, he changed from the timber industry to dealing with bathroom furniture, working for the famous Scottish company, Carron. This required a move to Stirling in Scotland where Adrian took on the role of product manager for their bathroom division, which he describes as mainly a marketing role. After two successful years, he was asked to move back south to manage a product launch and set up a new sales region which meant he was back in a sales role, which is where he felt most comfortable. He decided Thornbury would make a good base and moved first into Crispin Lane and, later, to Alveston. It was whilst living there that he discovered Olveston and particularly loved the surrounding area, especially the trees and woods around Old Downand the White Hart!

During 1984, the Carron company began to run into some financial difficulties, but one of Adrian's Bristol customers asked him to help them set up a new bathrooms division on an agency basis. Starting from scratch, he managed to build up a substantial turnover, such that the company offered him a job. But by this point Adrian had decided that he didn't want to work for someone else, so he left to start his own agency, which is what he has done ever since..... or at least until the end of March 2022 when he decided it was time to retire from full time work, although he will probably take on a small amount of consultancy work.

Adrian's wife, Bev, had been part of his group of friends in his youth in Plymouth but, with all his moves, they lost contact with each other for 14 years. Then, when visiting a client company (where he didn't know Bev was working), they met again and the rest is, as they say, history. In 1990, with a growing family of five children, they moved from Alveston to a bigger house in Henleaze, where they stayed for 20 years. However, he had always hankered after living in Olveston, so 12 years ago, when The Barn became available, he

LINELA

embroid | print | promote

One place for everything promotional.
Specialising in embroidery,
printing and branded gifts



T Shirt Printing
Sports wear
Work wear
School wear
Promotional Products

Call us: 01454 615300

Email us: sales@linela.co.uk

www.linela.co.uk



Livewire Electricals
Electrical & Mechanical Solutions



Domestic, Commercial
and Industrial Installations

All electrics for new build, extensions and
alterations to satisfy mandatory Building
Regulations. Landlords safety inspections
Portable Appliance Testing (PAT)

Electrical and electronic service and repair
For 24 hour call-out service available please
call Peter Jones: Tel: 07880 858785

Email: pete.livewire@blueyonder.co.uk

Local number Tel: 01454 613482

Visit our web site at
livewire-electrics.co.uk

BonneFreshClean
Carpet & Upholstery Cleaning Specialists

Love the look and smell of
clean and fresh carpets and
upholstery?

Bonne Fresh Clean brings to
you a professional carpet and
upholstery service that will
leave them sparkling and fresh.

Call for a free
no obligation
quote today!

- Thorough, gentle deep cleaning, no residues
- Child and pet friendly treatments
- Latest industry approved qualification and full insurance



Bonne Fresh - Relax and enjoy beautifully clean
and fresh carpets and upholstery!

T: 01454 436001 M: 07774 908410

W: www.bonnefreshclean.co.uk

44 Townsend Lane, Almondsbury, Bristol, BS32 4EQ

Local Man With a Van



**I'm available for small
moving jobs,
rubbish collections
and house clearances.**

**Call Nigel
01454 529 003**

took the opportunity finally to move into Olveston. His wife and daughter had horses liveried in Old Down, so that was an added bonus of the move.



Adrian is a man of many interests. As well as being an accomplished dinghy sailor, he has a keen interest all motor sports, particularly classic motorcycles and cars. He has painted on and off for most of his life (and said that it had been more off than on for a lot of his working life), but it has become a more serious interest over the last four or five years. He is very involved with Severn Vale Art Trail * showing his paintings in various locations in Thornbury.

Since moving to The Barn, a lot of work has been carried out and now there are some lovely spaces where a studio and potential small gallery have been created. During the Art Trail period, the studio is open as part of the trail and people are welcome to visit and view more of his work. He now plans to use the facilities to encourage all sorts of artists, not just painters, to create a local arts community with a place to interact, create and learn.

In the summer, Adrian is going to auction one of his paintings (seen on the easel in the photo) and donate the proceeds to a local charity. Watch this space for more information!

*www.severnvalarttrail.org

Beauty at the Barn

4, Grey Gables, Vicarage Lane, Olveston
For appointments telephone Nicola on
01454 201717



Jessica Manicures
GELeration Nails
Shellac Nails
Jessica Pedicures
Spray Tanning
Waxing
Ear Piercing
Eyelash Perming
Eyebrow Shaping
Eyelash tinting
And more....
Evening appointments available
Gift vouchers available



Olveston & Tockington Tennis Club

*"Your local tennis club, next to Olveston Parish
hall"*

**Make 2022 the year to get back
on court.**

Coaching for all ages.

**Fabulous clubhouse with changing
facilities, kitchen, TV and table tennis.**

Call Martin 07720509653

Everyone welcome



2nd May. We will be showing Stephen Spielberg's 2021 reworking of the 1957 musical - one of the greatest of all time – which explores forbidden love and the rivalry between two New York gangs of different ethnic backgrounds. Nominated for 7 Oscars and 5 Bafta Awards the film transposes the star-crossed lovers of Shakespeare's Romeo and Juliet from Renaissance-era Verona to post-war New York.

16th May. We have one of those unbeatable British comedy/dramas, which was made in 2018. On the eve of retirement, a middle class, judgmental snob discovers her husband has been having an affair with her best friend and is forced into exile with her bohemian sister who lives on an impoverished inner-city council estate. There is a stellar cast including Imelda Staunton, Celia Imrie, Timothy Spall, Joanna Lumley, David Hayman and John Sessions to name but a few! *"There is a certain creaky charm to this tale of late-life second chances and senior dance classes."* The Guardian.

All movies start at 7:30pm, doors open 7pm. All welcome, there is no entry charge, but donations are gratefully received to cover expenses. Licensed bar and refreshments before and during the interval.

If you would like to join our mailing list, please email:
mondaymoviesolveston@gmail.com.



Tel: 07887 652358
Jed's N.E.A.T. Services
(Nose Everything About Technology)



Technology brings us together and makes life easier. But.....
What should you buy?
How does it work?
And what if anything goes wrong?

Phones / laptops / tablets / TV's / Smart home systems. I can.....

- Help you choose what's right for you
- Teach you how it works
- Fix existing 'tech' problems

HOME VISITS – VIRTUAL REMOTE ASSISTANCE – PERSONAL SHOPPING

PRICING POLICY – Please pay me what you think is fair – SIMPLE ☺

ABOUT ME

Jed Williams – I'm 16 years old, live locally & have had my own business for over 3 years
Email: me@jedwilliams.co.uk Website: myneat.co.uk Tel: 07887 652358

Old Down Cricket Club

Tony Gardner

150 Club Winners April 2022:

£50 Richard Panes
£15 James Finch
£5 Simon Panes

Latest £25 Bonus Ball Winners:

12/03/22 Andrew Kitchen
19/03/22 Russell Knight
26/03/22 Tracey Jarvis
02/07/22 Andy Rowen

Up the Down!



Delivering the highest standards of homecare in South Gloucestershire for 14 years

Inspected and rated
Outstanding ☆

CareQuality Commission

good care guide
★★★★★

Great British Care Awards
2016 WINNER

Premier Homecare is the leading homecare provider in North Bristol and South Gloucestershire, having cared for over 2,000 families, ensuring they are safe, healthy and looked after

Call today for help with a loved one

PREMIER HOME CARE

0117 959 2013
www.premier-homecare.com

- Short and long term home help
- Flexible hours
- Bespoke care support
- Highly trained and reliable carers
- Personal Care
- From cleaning to 24 hour Live-In care



el cuisine

Catering for any occasion
Private parties, Birthday and Anniversary Celebrations,
Weddings, Funerals, Corporate Events,
Formal Dinners, Shoot Lunches... whatever the occasion

www.el-cuisine.co.uk Please contact Emma 07931952939 info @el-cuisine.co.uk



Tockington Manor School and Nursery
for boys & girls aged 2 - 13

Discover our

- Family approach to education
- Envious Senior School entry
- Year 7 & 8 Pathway Programme
- Wrap-around care
- Small friendly classes
- Excellent facilities

Book your private tour at a time convenient to you
01454 613229

Passerines or Perching Birds: Part 2

Paul Godwin

In last month's magazine Paul introduced readers to this order of birds and provided descriptions, and photographs, of three examples he had spotted locally. This month he writes about two more birds, and adds an interesting postscript.....

The Goldfinch

This bird is frequently seen in mature gardens, land where wild teasels and thistles grow, or the margins of woodland. It is very identifiable with its red face, black and white head and yellow wing bars. As with many birds you can often hear them before you see them. Their song is a very melodic with a rapid twittering. They fly in flocks outside of the breeding season and are very identifiable in flight with an undulating or dancing flight pattern. This autumn and winter I have seen many more flocks of goldfinch than previous years. In our garden we have a flock which arrives daily, throughout the day, to eat sunflower hearts from the feeder. There are approximately 1.2 million breeding pairs throughout the UK. Many will migrate south in autumn to mainland Europe and return by March. I did wonder this year, as we have had (at the time of writing) such a warm winter, if some decided to not make the journey to Europe but to stay here? This photograph was taken December 2021 in our Olveston garden.



The Long-Tailed Tit



A very beautiful bird, sometimes seen in mixed flocks doing acrobatics in trees and shrubs whilst feeding on tiny insects. Its most distinguishing features being its long tail and rounded body, which makes it

Natalie Gladstone BSc(Hons) Ost

OSTEOPATH

Back & neck pain, arthritic/ joint pain,
sports injuries, pre /post natal, whiplash,
cranial treatments, rehabilitation Pilates.

Tel: 07870 219 249

www.nataliegladstoneosteopath.co.uk

OLD DOWN HILL, TOCKINGTON

Easy parking. Day & evening appointments.
REGISTERED: EXPERIENCED: PROFESSIONAL



Digger and Driver Available
Out-Door Services

A. D. D. PLANT

Groundwork, Digging & Clearing
Turfing, Any outdoor work

Tel: 01454 417372

Mobile: 07866 407683



keeping your garden
beautiful...

ask us about
LAZYLAWN

- LazyLawn - superior artificial grass supply and installation - licensee for Bristol & South Wales
- landscape design and build with 25 years experience
- tree surgery
- garden makeovers
- regular garden maintenance

**Garretts Gardens
and Landscapes**

for Garretts Gardens or Landscapes
t 01454 614111 m 07974 109919
info@garrettslandscapes.co.uk
www.garrettsgardens.co.uk

Come rain or shine,
lisa costa estate
agents have the
experience and
knowledge to take
you smoothly through
the moving process.



lisa costa

RESIDENTIAL SALES & LETTINGS

53 High Street | Thornbury | BS35 2AR
01454 279734 | sales@lisacosta.co.uk | lisacosta.co.uk

Please note: If your property is currently on the market, the terms and conditions of your Existing agency agreement must be considered before instructing ourselves.

quite unique amongst European birds. In summer the flock will just consist of family birds, but in winter, especially in woodland, they can be seen in large flocks. They move between trees in small numbers almost appearing to take it in turns. This photograph was taken towards end of February within a flock of approximately 15 birds. I have also seen them this year moving in flocks with goldcrests on the edges of woodland. They are an occasional garden visitor and again with a distinctive high thin voice you often hear them before you see them. The photograph on the previous page was taken in March 2021, along field edges near Mumbleys.

Postscript

Last month I wrote about robins and how numbers may increase in autumn due to an influx of migrating birds. I thought readers might be interested to know that in March, whilst crossing the North Sea on an expedition cruise from Dover to Norway, we saw a robin. When we were a day and a half out to sea it started to fly alongside the ship, and only very occasionally coming to land on the bow. It was incredible to see such a small bird in a large sea, contending with sea conditions and wind. It stayed for about an hour with the ship. I wondered how it knew where it was going, and how it had the energy for such a journey when it could not touch land. My best guess is that it was flying towards Scandinavia, or the German coastline, returning from its winter in the UK to its summer breeding area. On the return journey we observed a warbler (but could not be specific as to type) and another robin, again flying eastward. I couldn't help but be excited and amazed at how these small birds are able to make such journeys.

Alveston Singers' Summer Concert

After a somewhat gloomy couple of years, Alveston Singers are ready to help get you in the mood to celebrate the joy of the Queen's Jubilee. In our concert, entitled Music Fit for a Queen, we'll be singing music that was written especially for royal occasions such as coronations, weddings, and even a musical glad-to-hear-you-are-feeling-better card.

The concerts will be at the United Reformed Church in Thornbury on Saturday 21st May and at the Methodist Church, Alveston on Tuesday 24th May, both starting at 7:30pm.

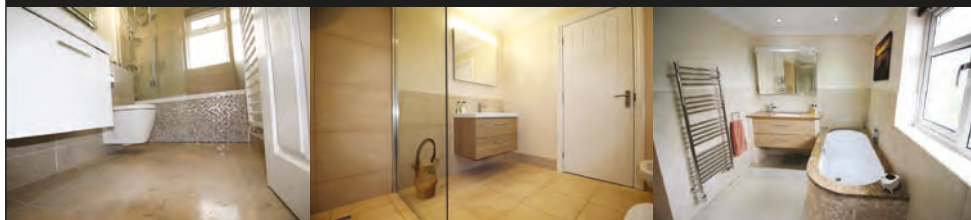
To cheer you up even more, entry to our concerts is absolutely free. However, we know that you enjoy supporting local charities so we will be collecting for Thornbury Stroke Support group and the Alzheimer's Society. Come along to raise the flag and raise your spirits.

Enquiries: Clive 417669

Paul Whittaker

BATHROOMS & WETROOMS

DESIGN . SUPPLY . INSTALLATION



Tel: 07879 666221 . Website: www.paulwhittakerbathrooms.co.uk



Aust Pilgrimage

Following a break due to Covid, the Aust pilgrimage resumes its annual walk this year on Saturday 21st May. The pilgrimage commemorates St Augustine's journey to meet the Welsh bishops on the banks of the River Severn in 603. He intended to sort out differences between the Roman and Celtic Churches. This encounter did not end in reconciliation, but it did pave the way for the Synod of Whitby, 61 years later, when agreement was reached.

The Pilgrimage begins with a short service at 8.00am in Bristol Cathedral, after which pilgrims make their way to the Church of St John at Aust for a Pilgrimage Service at 5.00pm. (Any dogs which have accompanied pilgrims will also be welcome). Some Pilgrims walk from the Cathedral following what has become a traditional route, a distance of around 16 miles. Others begin their walk at the Holy Family Church at Highwood Road, Patchway, which is open from 11.45am to 12.15pm for light refreshments. Please note that if you are either following the traditional route from the Cathedral, or from The Holy Family, hiking boots or stout walking shoes will make the journey more comfortable, and you will need to bring a picnic lunch to eat on the way. Some follow their own route to Aust, either on foot or by car, for the service at 5.00pm and meet other Pilgrims at The Boar's Head.

For further information: email: austpilgrimage@yahoo.co.uk or www.austpilgrimage.wordpress.com or Facebook: *Aust Pilgrimage*

Olveston and Tockington W.I.

Angela Green

Olveston and Tockington WI recently held a meeting in the White Hart for our new members. We had a lovely evening with some great ideas, and lots of interest shown in future activities.

At our meeting this month we are off in spirit Around the World in Eighty Days, to the accompaniment of songs and music. And to chime with this happy theme, we are having a little competition: Bring your most interesting, or most beautiful, souvenir from a holiday anywhere and we'll see which is everyone's favourite.

If you would like to join us, you'll be very welcome. We meet in the Parish Hall at 7.30pm on Tuesday 10th May. Ring me on 615222 for more details.

Dunkley's
Chartered Accountants
30 YEAR ANNIVERSARY

**LESS THAN 6 MONTHS TO
GO...MTD IS COMING
FOR ALL VAT REGISTERED
BUSINESSES!**

TALK TO US ABOUT HOW WE CAN HELP YOUR
BUSINESS PREPARE AHEAD OF 1 APRIL 2022

T: 01454 619900 E: ADVICE@DUNKLEYS.ACCOUNTANTS

WOODLANDS GRANGE, WOODLANDS LANE, BRADLEY STOKE, BS32 4JY



**Legal advice
that brings
balance to life**

Award winning legal advice
to help you navigate change
and plan for the future.

gl LAW

Let's talk about you or your business www.gl.law 0117 906 9400

BUSINESS SERVICES · PROPERTY · DISPUTES · FAMILY LAW · WILLS & PROBATE

- All makes servicing and repairs
- Petrol and Diesel MOT Testing
- Tyres, Exhausts and Batteries
- Air Conditioning
- Latest Bosch On-Board Diagnostics
- Vehicle Sales



**GREEN LANE
GARAGE**
OLVESTON

New Road, Olveston, BS35 4DX
01454 202030






GreenForce

Do you know what a carbon footprint is? A carbon footprint is how much carbon is released into the atmosphere as a result of everyday activities. It can apply to ourselves, to livestock, crops, land use, and to the supply chain including packaging.

Many of us heat our homes using gas-fired boilers or use gas for cooking. We eat plenty of meat in our diet and we use petrol and diesel to fuel our cars. We are all responsible for adding to climate change every day. The figure for the UK is nearly 5.5 tonnes per person, with the global average sitting at around 4.7 tonnes.

Have you thought of finding out what your carbon footprint is? There are several websites available, one of which is from the Worldwide Fund for Nature: www.footprint.wwf.org.uk/

The best site to use must follow these criteria:

- designed for your country of residence
- includes all four main categories of household consumption (transportation, housing, food, and goods, services, and leisure)

It is possible to cut back on meat consumption. Livestock could be kept less intensively too which would reduce their carbon footprint. Crops could be grown using manure as fertiliser instead of manufacturing it. Manure can be made into pellets which makes it lighter to transport. Food can be bought locally. Wine bottles are being reduced in weight from 650gms to 500gms to reduce carriage costs and it is gradually being realised that glass is the best substitute for plastic as it's fully recyclable! And our lifestyles could be modified too. As always is the case, every little adds to the whole, but change isn't easy, and it comes with a cost.



Alveston Repair Café

The next Repair Café is on 21st May.
St Helen's Church, Alveston.
10am to 1pm.

gsharchitects



FREE CONSULTATION

For further information please contact us on:

info@gsharchitects.co.uk
www.gsharchitects.co.uk
Almondsbury, Bristol

07780 000220

Build without planning permission

Quality design service from
concept to completion

Planning, construction drawings and
contract administration service
tailored to suit you

Domestic, Commercial,
and Sustainable Architecture.

Experienced working with
Listed Buildings

Build your dream home in your
garden

Development Advice and Appraisal

3D Visualisation Services

RIBA 

New Passage Cat Kennels

**Large Runs ~ Heated Chalets
Licensed Cattery
in Pilning**

**Tel: 01454 632 456
www.catkennels.co.uk**



Design & Planning

Home Extensions - Change of Use - Floor Plans
Full Planning & Building Regs drawing service
Almondsbury based with successful local projects

contact Julian Lowther for friendly professional advice

t:0117 2591059 julian@jfl-planning.co.uk
m:0789 0179546 www.jfl-planning.co.uk

G.V.R PITCHER & SONS

**The Yard
Haw lane
Olveston
Bristol**



**TEL: 01454 619299
MOB: 07989 208964**

Property Care & Improvements

Souper Natter

Would you love some company and a smiling face? Come and join our friendly bunch for a chat and enjoy free tea/coffee and cake with us!

Monday 16th May, 10am-12pm, The Slimbridge Room, The Chantry,
Thornbury.

For further details contact Sato on: soupernatter@gmail.com or 07971 670880

Thornbury Eisteddfod is Back

March 2022 saw the return of Thornbury Eisteddfod, thanks to the generosity of the Thornbury Lions and the hard work of Kate Phillipson-Masters and a small team.

A successful Vocals Morning in the Whitsun Hall with a small but enthusiastic number of entrants, was followed by a lovely Choirs Morning in St Mary's Church. The final Instrumentals Morning was also held in the Whitsun Hall. The culmination was a concert in the United Reformed Church for chosen cup winners to showcase their talent.

Hopefully 2023 will see a larger numbers of entries, including some for Speech and Drama. Copies of the syllabus will be available to download from www.thornburyartsfestival.com in the autumn and entries will be accepted from November 2022 until January 2023.

Thornbury Eisteddfod is affiliated to the British and International Federation of Festivals, and the adjudicators are professionals who are approved by them.

Digital Champions

If you, or someone you know, needs help to get online or would like to learn more about what you can do online, the Digital Champions can help. The Digital Champions run free one-to-one support sessions to help you feel more confident using the internet and online services.

Based in seven South Gloucestershire libraries: Thornbury, Downend, Emersons Green, Hanham, Staple Hill, Yate and Winterbourne, the Digital Champions can help you complete specific tasks such as applying for a blue badge, setting up an email account or learning how to make video calls.

CAR - VAN - MINIBUS

**SELF DRIVE - LOW-COST - SHORT/LONG TERM
WIDE VEHICLE SELECTION - CONTRACT HIRE**

- Fully Comprehensive Insurance
- Extra-Low Off Peak Rates
- No Hidden Charges
- Breakdown Cover
- Cars
- Minibuses
- Transits
- Sprinters
- Lutons & Tail Lifts

THORNBURY SELF DRIVE HIRE

Established Over 20 Years

www.tsdhire.co.uk
Mob: 07768 232424
Email: info@tsdhire.co.uk

01454 414111

COOPER ROAD, THORNBURY IND. EST., THORNBURY, BRISTOL BS35 3UP

THORNBURY AUTOBODIES

Car & Commercial Body Repairs

- Crash Repair • Re-Sprays • Dent Repair
- Spray Booth Facilities • Full Body Jigging • Recovery
- Top Standard Of Work
- Fully Insured
- Insurance & Private Work

Courtesy Vehicles • Free Estimates • Over 25 Years Experience

THORNBURY
01454 419985

Email: thornburyautobodies.ps@gmail.com www.thornburyautobodies.co.uk
Cooper Road, Thornbury Industrial Estate, BS35 3UP

WJC

Plumbing & Tiling

Bathroom & Wet Room Design & Installations
Tiling • General Plumbing
Kitchen Installation • Plastering

Billy Cook
WJC Plumbing & Tiling

07748 085 920
wjcpumbing@outlook.com

You can book a session and bring your own device along (such as a laptop, tablet or smartphone), or use one of the library computers on the day - just let us know when you book.

To book your session, visit the library during staffed hours and speak to library staff or phone 01454 865022 (lines open Monday to Friday 10am to 4pm and Saturday 9.30am to 12pm).

Transcendent Troubadours of Gypsy Cabaret and Swing



Intrigued? Moscow Drug Club is a curious musical place where elements of Berlin Cabaret, Hot Club de France, French Musette and storytelling meet. Imagine having a few drinks and staggering arm in arm into the darkness of an Eastern European cobbled street and stumbling into a bar where Django Reinhard and Tom Waits are having an after-hours jam with the local Tziganes.

Evocative and inspiring, the musicians combine their original material with songs by the likes of Jaques Brel, Tom Waits, Leonard Cohen and Eartha Kitt, to deliver an intoxicating and intimate musical experience. You are cordially invited to share a wry smile with us as you enter the darkly comic world of Moscow Drug Club.....this way please, and mind the cobbles!

The performance takes place on Friday 13th May at 7.30pm at The Ship, Thornbury Road, Thornbury, BS35 3LL. Tickets are £14 and food is available for £10 to be eaten earlier.

Bookings can be made by emailing AAGThornbury@gmail.com or call 01454 850933.

Thornbury Choral Society Concert

Thornbury Choral Society will be presenting a concert with full orchestra in Castle School, Thornbury on Saturday 14th May at 7.30pm. This will be their first full concert since the lockdown in 2020 meant that singing in enclosed spaces was no longer permitted, and rehearsals ceased.

The main works are both by Haydn - his Harmoniemesse and his Symphony No 1 in D major. Soloists in the mass are - Soprano: Emily Wenman,



GARDEN MACHINERY SPECIALISTS
SALES, SERVICE AND SPARES

E-MAIL: themowerdoctor@hotmail.co.uk WEBSITE: www.themowerdoctor.net
ADDRESS: Unit 2-3 The Rearing Unit, Oldbury Lane, Oldbury-On Severn, BS35 1RF
TELEPHONE: 01454 411 701







DEALERS FOR:








PHYSIOTHERAPY
CHIROPRACTIC
PODIATRY
CHIROPODY

"Optimise your Health"

Please Enquire:

Tel: 01454 528608
Email: info@optimuscp.com
Web: optimuscp.com

11 The Plain, Thornbury, BS35 2AG

OLDOWN
TREE SURGEONS

TREE SURGERY AND HEDGE MAINTENANCE

PROFESSIONAL. QUALIFIED. FULLY INSURED.

www.oldowntrees.org

Antony Leicester 07800512408 info@oldowntrees.org



Computer support and solutions for the home and business user.

- PC/laptop repairs
- Virus removal
- Wifi/broadband issues
- Sponsors of Olveston FC

EC COMPUTERS

How can we help? Tel: 01454 281 500 Web: www.eccomputers.co.uk

IT Support/Repairs Office Equipment Print Solutions Telecoms Cyber Security Managed Services Software/Database applications

Alto: Harriet Hougham-Slade, Tenor: Deryck Webb and Bass: Daniel Robson. Music is provided by the Thornbury Camerata and the conductor is Stephen Kings. The final work is the Miserere by Zelenka. It is not clear whether Haydn knew of Zelenka - he was only a teenage chorister when Zelenka died - but they share a passion for religious choral music - much in vogue in the Germany of the time.

Tickets are available from choir members and, after 1st May, from Horders, Stationers, in Thornbury High Street. Alternatively contact 01454 854718 or thornburychoral@gmail.com

Friends of St.Mary's

The prize winners in the April draw, held on 7th April 2022 were:

Amount	Number	Name
£150	209	Ms M Dale, Olveston
£75	274	Mr & Mrs J Croome, Exmouth
£25	264	Mrs J Hughes, Olveston
£25	253	Mr & Mrs R Williams, Olveston
£25	401	Mrs N Slaytor, Tockington
£25	412	Mr R Lloyd, Tockington
£20	185	Mr B Morgan, Tockington
£20	370	Dr & Mrs M Wright, Olveston
£20	186	Mr G Clark, Olveston
£20	353	Mrs J Jones, Olveston
£10	252	Mr & Mrs R Williams, Olveston
£10	387	Mrs M Baker, Olveston

If you are not yet a member and wish to join the lottery, please telephone Andy Phillips on 01454 614890 or email andisp28@hotmail.co.uk.

Don't forget, if you're not in – you can't win!



XL Plumbing & Heating Solutions Ltd

- General Plumbing
- Boiler Installation, Servicing & Maintenance
- Gas Safety Certificates
- Bathroom Installation & Tiling

Contact Mark Mob: 07738 726803
Email: xlplumbing@hotmail.co.uk
Tel: 01454 549008
Web: www.xlplumbing.co.uk



**YOUR PC
GURU**

COMPUTING FOR 'MERE' MORTALS

01454 616365

- Home visits
- Computer Repair
- Phone & Tablet setup
- Home Wireless & Broadband
- Smart Home Tech
- Complete Mac support

www.yourpcguru.co.uk
Technology Advice & Repairs

JC 4x4 Ltd SPECIALIST IN LANDROVER 

SERVICE • REPAIR WORK • DIAGNOSTICS • MOTS • OTHER VEHICLES WELCOME

CALL JAMES: 01454 261067 / 07966 086447


**EDGE
HEATING
& PLUMBING**

07307 727244

Free Quotes

Domestic	Radiant heating
Commercial	Boilers
Breakdowns/ call outs	Radiators
Servicing	Plumbing
Installations	
Warm air heating	LPG, natural gas, oil



www.edgeheatingandplumbing.com info@edgeheatingandplumbing.com

May at Thornbury Library

Hats on for her Majesty

Wear your most extravagant hat and join us for a morning tea party
11am-12.30pm Monday May 30th

Crowns, Corgis, Hearts and Horses

Create your own crown or hat using some of the Queen's favourite things.
Take a princess or knight selfie. Enjoy a treasure hunt around the library
Wednesday 1st June 9.30am-11am

Family Story time and Simple Activities

Lovely stories to listen to and crafts to make
Saturday 7th and 21st May 9.30am

Book Worms for Year 7 and up.

Come and spend an hour with others who love reading.
A great way of finding great new authors with no set book to read
Thursday May 12th 4pm-5pm

To book any of the above activities, and find out about others, pop in or email:
thornbury.library@southglos.gov.uk or call 01454 868006

Some events coming up in June....

Saturday June 18th

Dan Lewis-Leaver, and his band Pilot Whale Research, are playing live at St. Mary's, Olveston. 8pm, doors open 7.15pm. Free entry/donations to charity.

Sunday June 19th

Sevenside Songs of Praise. 6pm at St. Mary's Vicarage Garden, Almondsbury.

Thursday June 23rd to Saturday June 25th

Thornbury Arts Festival www.thornburyartsfestival.org.uk

Full details of these events, and plenty of others, will appear in the June edition of Meeting Point.



Dave Webb

Painter - Decorator

07809 869149

01454 201640

*Reliable, professional, friendly service.
Please ask for your free quotation*



Squire Sweep

A chimney sweep service from
Michael Squire

Tel: 07504 253 467

Email: squiresweep@gmail.com

Visit: www.squiresweep.co.uk

Yours Faithfully

Revd Dr Simon Edwards

Olveston and Tockington Methodist Church

I ignored it for several months. It brought pain for a day or two, then the pain subsided, and I carried on. I was aware of it every day though, hoping that it would sort itself out. I was wrong and the pain returned. I am talking about a tooth! Finally, I visited the dentist, and I mentioned the ongoing saga of this tooth. She duly inspected the offending gnasher, tapped it with something and said 'Hmmmm, I can't see anything, but let's take an X-Ray.' A moment later she made a noise that I've only ever heard from a mechanic. 'It's an extraction I'm afraid. The tooth is cracked all the way down the root.' A few weeks later the tooth was removed, and the pain was gone.

Why am I sharing this with you? Well, I think that there are times when we hold on to things for far longer than we should. Perhaps someone said something in a moment of anger, someone failed to greet us as we would have wanted, someone didn't appreciate our hard work and effort. There are all sorts of things which we hold on to, they can be big or small. And holding on to them doesn't bring comfort and peace, it brings pain and resentment.

Matthew 11: 28 says 'come to me, all you who are weary and burdened, and I will give you rest.' Christ calls us to let go of those things which burden us, those things which weigh us down, the things which bring anger and hurt. We need to take them to him and be released to live without them, to live free from their power over us. It will hurt to pull it out, but once it's gone, it's gone!

So, a plea; go to the dentist! But more than that, allow Christ to help you let go of that which burdens you, so that you are free to live.

MEDWAY DESIGNS Sewing & Alterations

- Bridal Wear •Alterations
- Evening Wear •Day Wear
- Soft Furnishings & re-upholstery

Ask about sewing lessons

Delivery & Collection Service Available

Lois Coulson

0117 969 1798 /

07950 396064

loiscoulson@ymail.com

14 Watch Elm Close, Bradley Stoke

Call now for a friendly personal service

Cookin' On Gas Ltd



Repairs & Sales of all
domestic appliances:



Gas & Electric Cookers and Hobs
Washing Machines, Dishwashers
Tumble Dryers

www.cookinongas.co.uk
enquires@cookinongasltd.co.uk

Matt Cole
1 Olive Gardens Tel 01454 851545
Alveston Mob 07715 705670

HOLIDAY LET 6 BERTH HOLIDAY HOME

(2 Bed, 1 Ensuite)



Central Heating . Double-Glazed
Private Beach . Fishing Trips . Cliff Walks
Restaurant . Bar . Live Entertainment
Indoor Pool . Kids Club
Shop . Cafe . Takeaway

Tony Gardner
07889 727 729

MEMORIALS &
MONUMENTS



Supplied & Erected
NEIL VIZARD
01454 419108

BAMFIELD
TREE SERVICES
TREE SURGERY AND LOGS



www.bamfieldtreeservices.co.uk
07761 810483

prestige
event equipment hire

Supplying you with the best equipment to succeed!
CELEBRATIONS & CORPORATE EVENTS

CUTLERY, CHINA, GLASSWARE, LINEN, REFRIGERATION,
COOKING EQUIPMENT, BARBEQUES, FURNITURE & MORE

Fast and Efficient, we stock a wide variety of
equipment covering anything from
WEDDINGS to FESTIVALS.

For a FREE quote please call: 01179613170
info@prestigecateringhire.co.uk
www.prestigecatering.co.uk

HK **Harkell**
Building services

- MAINTENANCE
- BRICKWORK
- ROOFING
- FENCING
- REPAIRS
- PLASTERING
- CARPENTRY
- PATIO ETC

FOR A FREE QUOTATION PLEASE CALL
TEL: 01454 617110 MOBILE: 0787 6682546

Window Cleaning

07976 694744 - 0117 9085794



M. Gray Window Cleaning

Family run business for over 25 years
experience working in the Almondsbury,
Olveston, Aust areas - and nearby.

Email: mgwc1@hotmail.com

Church News

ST MARY the VIRGIN, OLVESTON

May 1	9.30am	Holy Communion	Revs Lloyd and Bone
	6pm	Evensong	Rev David Moss
May 8	9.30am	Morning Prayer	Rev David Moss
	6pm	Holy Communion	Rev David Moss
May 15	9.30am	Morning Prayer	Janet Mc Bride
	6pm	Holy Communion BCP	Rev Ann Lloyd
May 22	9.30am	Holy Communion	Rev Ann Lloyd
	6pm	Evening Prayer	Paul Harrod
May 29	9.30am	Holy Communion	Rev David Bone
	6pm	Evening Prayer	Paul Harrod

Every Wednesday, Holy Communion, 10am, usually with Rev Ann Lloyd

Contact: Rev David Moss, 01454 415190; email: mossds@gmail.com

CHAPELRY OF ST JOHN, AUST

May 8	10am	Morning Prayer & Baptism	Rev David Moss
May 22	10am	Holy Communion	Trevor Cook

Contact: Trevor Cook, 01454 618442

Church Wardens: Jenn Dickens 632312 & Clive Roberts 632238

ST MARY DE MALMESBURY, LITTLETON-ON-SEVERN

May 8	9am	Morning Prayer	Tracey Black
May 22	9am	Holy Communion	Rev David Moss

Contacts: Tracey Black 417660 & Tim Pyper 416422 /07802 419451

ST JOHN THE EVANGELIST, ELBERTON

May 8	9am	Morning Prayer	Judith Heybyrne
May 22	9am	Holy Communion	Judith Heybyrne

Contacts: Judith Heybyrne 616725 and John Gunnery 413225

greenside
Landscaping

The Cottage, Hortham Lane,
Almondsbury, Bristol BS32 4JP

Greenside Landscaping can offer a wide range of services including:

**Artificial Grass ~ Brick & Block Driveways
Decking ~ Fencing & Gates
Garden Design ~ Patios & Paths
Planting ~ Ponds & Water Features
Turfing & Seeding ~ Walling**

We pride ourselves on flexibility and we strive to meet our client's requirements and budgets.

www.greenside-landscaping.co.uk
Tel: 01454 250648 Mob: 07980 384321
Email: paulbradburn@hotmail.com

MORAS
Decorating Services

ANDREW MORAS
Quality Painting and Decorating Services

For your FREE no obligation quote contact Andrew:

07962069036

✉ andrew@morasdecorating.co.uk
www.morasdecorating.co.uk

Tavira
Algarve, Portugal
3 Bed Apartment
*can accommodate up to 8 people

Modern 3-bedroom apartment in picturesque & historic Algarve town. 2-bathrooms including one en-suite, 2-balconies & roof terrace. Fully furnished, sleeps 6-8. Easy walking to thriving town centre. Close to railway station, golf courses & beaches. 30 minutes drive from Faro. Ideal for families or golfers. Tel: 07889 727729 Email: anthonyar@aol.com - www.aminpadtavira.co.uk

TAVIRA - EAST ALGARVE
EASYJET & RYANAIR
NOW FLYING TO FARO
FROM BRISTOL

BE DLAM
www.bedlambeds.com

- Free local delivery
- Free assembly
- Free disposal of your bed

Divans / Mattresses / Ottoman & Wall beds / Memory foam & latex mattresses / Beds made to measure / Pine, Metal & leather beds

**Open Tuesday to Friday: 9am-5pm
Saturday: 10am-3pm**

Visit our showroom: The Old Post Office
26a Gloucester Road, Rudgeway, Bristol,
BS35 3RY (by the speed camera)

01454 617 277 or 07887 853479

Thornbury Stairlifts
SALES SERVICING & REPAIRS

• New & Re-conditioned Stairlifts & Warranty
• Removals & Relocations
• Free Surveys & Quotes
– No Obligation
• Rentals for Straight Stairs

Independent, Professional & Friendly Advice
Over 24 years practical experience

Independent Stairlift Specialist
01454 413748 07833 318722
www.thornburystairlifts.co.uk

OLVESTON AND TOCKINGTON METHODIST CHURCH

May 1	10am	Tock Ch	Morning Worship led by Rev Ken Luxton
May 8	4pm	Olv Ch	Olveston Chapel's 200 th Anniversary Service led by Rev Dr Simon Edwards. Guest Preacher Dr Leslie Griffiths - Lord Griffiths of Burry Port
May 15	10am	Tock Ch	Morning Worship led by Rev Dr John Emmett
May 22	10am	Olv Ch	Morning Worship led by David Head
May 29	10am	Tock Ch	Morning Worship led by Rosalie Doyle

Contact: Rev Dr Simon Edwards 418176,
simon.edwards@methodist.org.uk

THE VINE House of Prayer, Pilning Street, Awkley BS35 4HL
Meeting at 11am every Sunday and on the 1st and 3rd Wednesdays of each month at 2.30pm.

Contact: Mike and Barbara Matthews 07512 917229 or
thevine_awkley@hotmail.com

THE OASIS CHURCH, OLD DOWN

Services at 6.30pm every Sunday. All are welcome.

Contacts: Jenny Parfitt jennyparfitt@ymail.com & Sue Tett
stett56@hotmail.co.uk

AUST EVANGELICAL and LITTLETON EVANGELICAL CHURCHES

Contact: Danny Bamfield 01454 419324 danny@thebamfields.co.uk

RC CHURCH OF CHRIST THE KING, Thornbury

Mass on Sundays at 9.30 and 10.30am

Contact: 01454 412223 www.ctk-thornbury.org.uk

SOCIETY OF FRIENDS (QUAKERS), Thornbury

Contact: Brian Hawkins, hawkinsb863@gmail.com 01454 854867

Diary Dates for May

1 Sunday			
2 Monday	Monday Movies	7.30	StM
3 Tuesday	Over 60's coffee morning, every Tuesday	10-12	DGCL
4 Wednesday			
5 Thursday	Coffee Shop, every Thursday Thornbury Farmers' Market Parish Hall AGM	9 - 12 9 - 1.30 7.45	StM OPH
6 Friday	Over 60's Bingo or Quiz, every Friday	2-4	DGCL
7 Saturday			
8 Sunday			
9 Monday	Severnvale Flower Club	2pm	SMCH
10 Tuesday	Over 60's coffee morning Thornbury Memory Café Aust Parish Council WI. 'Around the World in 80 Days'. Aust Parish Council	10-12 10.15-11.45 7.30 7.30 7.30	DGCL TMH EBH OPH EVH
11 Weds			
12 Thursday			
13 Friday	Over 60's Bingo or Quiz	2-4	DGCL
14 Saturday			
15 Sunday			
16 Monday	Monday Movies	7.30	StM
17 Tuesday	Over 60's coffee morning	10-12	DGCL
18 Weds			
19 Thursday	Thornbury Farmers' Market	9 - 1.30	
20 Friday	Over 60's Bingo or Quiz	2-4	DGCL
21 Saturday	Aust Pilgrimage (see article for details) Alveston Repair Café :St Helen's	10 - 1.00	

22 Sunday			
23 Monday	Severnvale Flower Club	2pm	SMCH
24 Tuesday	Over 60's coffee morning, every Tuesday Thornbury Memory Café Olveston Parish Council	10-12 10.15-11.45 7.30	DGCL TMH OPH
25 Wednesday	Alveston Historical Society, Kurt Adams, 'Local Archaeological Finds'.	7.30	AMH
26 Thursday			
27 Friday	Over 60's Bingo or Quiz	2-4	DGCL
28 Saturday			
29 Sunday			
30 Monday			
31 Tuesday	Over 60's coffee morning	10-12	DGCL
2 nd and 3 rd June	Platinum Jubilee Celebrations	See posters	

KEY: **AMH** - Alveston Methodist Hall, **DGCL** - Daldry Gardens Community Lounge, **EVH** - Elberton Village hall, **OPH** - Olveston Parish Hall, **StM** - St Mary's Church, Olveston, **SMCH** - St Mary Church Hall Thornbury, **TMH** - Thornbury Methodist Church Hall

Contact details for any clubs or organisations in the Meeting Point area can be found in the Meeting Point Directory on the community website: www.olvestonandaust.com. If you would like to update your organisation's details, please email: meetingpointsecretary@olvestonandaust.com

Advertisements Neither Meeting Point, its editor, nor management committee accept any responsibility or give any guarantee in case of any dispute or claim as to quality, condition or delivery of commodities or services advertised in this magazine. It is not to be taken that publication implies recommendation. It is always advisable to check prices when ordering goods or services.

Views expressed by contributors are not necessarily those of the editor or Meeting Point magazine
Copyright Meeting Point 2022. Copyright remains with the author(s) and Meeting Point. No part of this publication may be reproduced or transmitted in any form without the prior permission of the copyright owners.

Meeting Point is printed by Motion Printing Ltd.



Matrix

Vehicle Solutions

- Valeting
- Detailing
- Based In Olveston
- Machine Polishing
- Ceramic coating
- Fully accredited/insured



Tel. 07852 127772

www.matrixvaleting.com

matrixvaleting@hotmail.com