

Meeting Point



July 2021

TRUE BLUE TAXIS
(OLVESTON)

Local Taxi Company



Honest, Reliable and Safe

Cash or Card Payments



Mobile:

07967 042794

Top-to-Tail Housekeeping

- Professional
- Dependable
- Comprehensive service

**Trading
Standards
Accredited**

**Felina
Contract Cleaning**

01454 201562
07790 050187
cleaning@felina.biz
www.felina.biz



Weddings | Funerals | Bouquets | or just because...

**Beautiful
flowers for any
occasion...**

Our Shop is open Tuesday to
Saturday ~ 9.00am to 5.00pm

Taking walk in and phone orders

Delivering to BS35 and
surrounding areas ~ Tuesday to
Saturday from 9.00am to 5.00pm

Holding socially distanced
meetings for weddings and
memorials should you wish to
discuss plans

Please call for prices or pop into
the Shop in The Arcade,
Thornbury



t: 01454 416111

e: flowers@joliesfleurs.co.uk



THORNBURY
Chiropractic
CLINIC

www.thornburychiropractic.co.uk

The Georgian House, 6 The Plain

Chiropractic

Johnatan Williams Msc DC
Carol Williams MSc DC
Joanna Dinham BSc DC

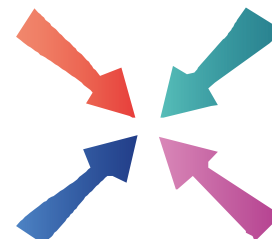
Acupuncture

David Sanders Lic Ac. M.B. Ac.C

Massage

Lucy Luke MTI
Josie Cole MTI (Saturday availability)
**Open weekdays 8.30am-7pm
and Saturday mornings**

01454 418259



Meeting Point

Volume 45, Number 10, July 2021

The community magazine for the villages of Olveston,
Tockington, Old Down, Lower Hazel, Awkley, Ingst, Aust, Elberton and Littleton upon Severn

EDITOR:

Marelin Orr-Ewing
Courtlands
Olveston
Bristol BS35 4DU
Tel: 01454 610081
[meetingpointeditor@
gmail.com](mailto:meetingpointeditor@gmail.com)

ASSISTANT EDITOR:

Angela Williams
Ashlea
Haw Lane
Olveston
Bristol BS35 4EG
Tel 01454 612850
[meetingpointmagazine@
gmail.com](mailto:meetingpointmagazine@gmail.com)

ADVERTISING:

Bernard Amos
Tel: 01454 620388
[meetingpointadvertising@
gmail.com](mailto:meetingpointadvertising@gmail.com)

Publication date
1st of each month

Material for August 2021
to the Editor or Deputy Editor
by 5th July 2021.

From the Editor

At the back of this month's magazine, after the Church News section, we have the small beginnings of a 'Diary Dates' section. In the past this has run to a page or more, but I'm just pleased that local events are starting up, albeit gently and carefully. I will certainly be putting both the Jam Jar Flower Festival at St. John's Church, Elberton and the Aust Village Fete onto my calendar.

As somebody who enjoys a glass of cider now and then, I enjoyed reading the article about the Littleton Community Cider Club. I think it is wonderful how members of the local community have worked together to restore and use this lovely orchard. I'm looking forward to getting a chance to taste their latest vintage - but will make sure that somebody else is driving home afterwards!

Marelin

This month's cover is by Les Harper.

Meeting Point Founded in 1976 by the Anglican and Methodist churches in Olveston, near Bristol.

Meeting Point magazine and Meeting Point Directory are online at the
Community Website: www.olvostonandaust.com

Thornbury Motors

- New and Used car sales
- Servicing, repairs and MOTs on all makes



thornburymotors.co.uk 01454 412535



Grovesend Road
Thornbury
Bristol BS35 2EF



SAVAGE ASSOCIATES

Accountants·Business Advisors
Corporate & Personal Tax Consultants

The Coach House, Aust Road
Olveston, Bristol BS35 4DE
Tel 01454 610388 Fax 01454 201541

for an initial consultation please contact:
edd.savage@savageassociates.co.uk

Vicarage Farm Holistic Therapy Centre

Bringing balance back
into your life.
Offering a wide range of
Holistic Treatments.



Hypnotherapy

A safe and effective treatment: to
remove stress, anxiety, depression
and phobias. Allowing positive and
powerful changes in your life.

Tel 01454 614390
www.vicaragefarm.org

St Mary's Church Tower Restoration Project

Peter Floyd



ST MARY'S CHURCH
TOWER RESTORATION
PROJECT

In January's Meeting Point, Mark Hancock of Centreline, our main contractor and architectural sculptor, gave us a detailed description of how the huge new pinnacles are to be carved.

The French limestone stone arrived from France at Centreline's yard at Miserden in the Cotswolds and as you can see from the photograph, the work is now well in hand. Two thirds of the material in the square stone blocks that came from the quarry has already been carved away to create the tapering pinnacles, each of which is over 6'0 tall, in 5 horizontal sections, with just the bottom section taking 3 days to rough out.



There are 4 crockets a side, with one more at the top, 17 crockets per pinnacle and 68 crockets in all, each one to be carved as foliage, with the one at the top as an opening bud.

You can see something similar over the canopied medieval tomb in the southeast aisle of St Mary's.

The photograph shows Mark with the top 3 sections, roughed out in 3 dimensions, to the shape of the pinnacle. The crockets are still in block form, the foliage hidden within the blocks and about to be revealed by his mallet and chisel.

Once the weight of the heaviest stone has been assessed, a strong enough hoist will be chosen, the scaffolding erected, and the work

will begin from the pinnacles down.

As you can imagine this is a complex, traditional and time-consuming process which cannot be hurried, and meanwhile we shall all be waiting eagerly for the work on site to begin.

D. YOUNG
GARDEN SERVICES
Fully Qualified with over 16 years Experience
Grass Cutting Hedge Cutting Turfing Fencing
General Landscaping

Tel: 01454 416206 Mob: 07545 131488
Email: d.younggardenservices@hotmail.com

hair of the hound
PROFESSIONAL DOG GROOMING SERVICE

- FULL GROOMS
- PUPPY PACKAGE
- NAIL CLIPPING
- DE-SHEDDING PACKAGE
- BATH & BRUSH
- HAND STRIPPING
- EAR CLEANING/PLUCKING
- TEETH CLEANING

Find us : 20 Stode Common, Alveston, Thornbury BS35 3PJ
Tel : 07936 067 107 Web : hairofthehound.co.uk
facebook : search hairofthehound

T. EDWARDS PLANT
Digger and Driver Hire

- Site/garden clearance
- Footings
- Drainage/soakaways
- Driveway preparation
- Stump removal
- Fencing & turfing
- Narrow access equipment

Price or day work t: 07900 372349
t.edwardsplant@gmail.com
CPCS/CITB qualified & insured

Divine
Bathrooms & Wet Rooms

07584 666154
Email: info@divinebathrooms.co.uk
Web: divinebathrooms.co.uk

iphe
Registered Plumber

S.J FARR
KITCHEN FITTING
SERVICES

Mobile: 07915673649

Our Associated Services Include:

- Plumbing
- Wall & Floor Tiling
- Decorating
- Plastering

City & Guilds Qualified

Geoff Gulliver
Carpentry & Joinery, Littleton
ALSO
UPVC Doors, Windows and
Conservatories. For a very
competitive **FREE** estimate

Ring (01454) 414947

Littleton Community Cider Club Celebrates its 10th Anniversary

Jim Turton

2020 proved a difficult year for us all, not least the Littleton Community Cider Club. 2020 was the 10th anniversary of the formation of the club and we are a little upset that we have been unable to celebrate it with an extravaganza for the parish, in the orchard of the White Hart, Littleton. Alas this will now have to wait until – we hope – summer 2021. As we didn't start drinking the first batch until 2011, then I think we can justifiably call 2021 our 10th anniversary.

I'd like to start with a brief history of the club and how it came about.

In the early 1980s when Smiles brewery (now long gone) bought the White Hart at Littleton from David Hickman, they decided to turn the old paddock at the back of the pub, into an orchard. The Long Ashton Research Station (formerly the National Fruit and Cider Institute) was invited to recommend and supply trees for a cider orchard. A number of varieties were planted on the 1.5 acre site, which included some old varieties such as Dabinett, Frederick, Yarlington Mill and many others. Alas the L.A.R.S. closed in 2003, but Smiles brewery did get some apples pressed and bottled for a while and local cider makers took apples for their own pressings. However, the orchard fell into disrepair and the trees were not well looked after. In 2000 and 2001 when Howard and Liz Turner were running the pub, I and a few friends took some of the apples to a friend of mine who has a press in, of all places, Long Ashton. We made some Littleton cider and it proved to be an excellent blend – if not slightly dangerous!

When Youngs brewery took over from Smiles in 2005, the Orchard had deteriorated further and was becoming overgrown with weed and brambles. Again a few local cider makers took some of the apples, but essentially the orchard was not well used or cared for and many trees had become inaccessible with overgrowth.

In 2009, Neil Harvey (Big Neil) moved into the house next door to the White Hart and being fond of a drink, was immediately interested in using the apples. The White Hart had no objection and Neil found a farm auction in Somerset that was selling a Cider Press and other equipment. He whipped up some local interest to buy it with a view to returning the orchard behind the White Hart to its rightful purpose and making Littleton cider on site. Hence the Littleton Community Cider Club was born. Fifteen members all signed up, each with a substantial investment, to buy the press and equipment. And so



2 Men Went To Mow

All Aspects of Garden Maintenance, Plants & Shrubs Supplied, Garden Rubbish Removal, Fully Insured

Garden and Tree Service Tel: 07956 311901
Local, Friendly and Reliable Email kev@2menwenttomow.co.uk

Tree Surgery (NPTC Qualified)
All Types of Tree Work Undertaken
Contract Grass Cutting
Beds & Borders Maintained
Pruning and Hedge Cutting
Planting

FREE ESTIMATES!

L. & J. GULWELL

Independent Family Funeral Directors

1 Quaker Lane • Thornbury

Tel: (01454) 418779

24hr Service

email: info@funerals.uk.net www.funerals.uk.net

Private Chapels of Rest



COMPANION AND DRIVING SERVICE

Driving Miss Daisy®
We're There For You

Now taking bookings in your area!

- For people of all ages unable to drive but wish to remain independent
- Supported trips to the doctor, hospital, shops, bank, hairdresser, vet, etc.
- Social outings, holidays, help at home and much, much more
- DBS checked and First-Aid trained
- Dementia friendly
- Wheelchair Accessible Vehicle
- Fully Licensed

To book your Daisy
07951 079 558 / 0333 014 6211
northbristol@drivingmissdaisy.co.uk
www.drivingmissdaisy.co.uk



All flooring work and fitting undertaken by experienced professionals

Phoenix Flooring Limited



Friendly and professional staff on hand to help you every step of the way

Residential & Commercial Flooring Specialists

- Carpets • Carpet Tiles • Luxury Vinyl Tiles
- Vinyls • Laminates • Engineered Wood
- Room Size Remnants • Artificial Grass

COMS Safety Scheme **CHAS**

smas worksafe contractor

SSIP

5 Chelford Grove, Stoke Lodge, Bristol, BS34 6DD
Mon-Fri 8-5pm Sat 9-1pm

Unit 15 Hemingway Business Centre, Walker Way, Thornbury, Bristol BS35 3US
Mon-Fri 9-5pm Sat 9-5pm

COME VISIT US AT ONE OF OUR SHOWROOMS

www.phoenixflooringltd.co.uk Tel: 01454 617723 / 620707 Email: enquiries@phoenixflooring.org

we saved a century old cider press from going to a museum and installed it in the White Hart orchard instead, with the blessing (and some financial support) of the then Landlord, Jamie Reed.

Restoration was not a simple task as the press and equipment needed substantial cleaning and repair work. Various parts were distributed around the villages and teams scrubbed, stripped, repaired and repainted it. The whole lot was re-assembled in the pub orchard, overseen by our engineer Mike Whitfield, and was ready for pressing the autumn 2010 crop. The brambles were cleared, the rubbish picked up and the trees were pruned. By spring 2011 the club members were eager with anticipation to test the results of their efforts (and expense). The first tasting went well, and giggling could be heard in the orchard from all corners of the village. A few members lost their voice and could only squeak. Others had trouble returning home and 'bodies' were reported in the village roads. The cider was good, easy to drink and strong. We all now understood where the expression 'legless' came from, and many learnt what their scrumpy limits were. Some wives and partners were not so understanding but nevertheless the club survived with a large enough membership to keep it healthy.

The club thrived and many long weekends were spent cleaning up the orchard, clearing around and between the trees and generally tidying up the whole area. The White Hart benefited not only by selling some of the output, but by having a very accessible and well-maintained area for their customers to explore, exercise their dogs and children, and they have hosted events there that attract new customers.

Every year since (2020 excepted) we have held several barbeques for the village and wider community, who also help out with picking the apples in the autumn. A great social event. We hold a very successful and spectacular Wassail at the White Hart every January. You may have come to one. There is always a big bonfire, a Green Man and a Wassail Queen, who is chosen on the night from the visitors. We have a proper procession through the orchard, a traditional tree blessing, and a choir. We sell our 'Lifesaver' cider and mulled cider at a competitive price and the pub puts on a barbeque. These events have become increasingly popular over the years.

We were very honoured when 'A forgotten Landscape' adopted us to run their Apple Day events. We also ran Cider making experiences for their members and volunteers. These events proved very popular and helped with the club finances.

The club has also inherited a 9M x 9M traditional centre pole and guyed marquee which we use for events, but also hire out locally at a very modest



Tel: 07887 652358
Jed's N.E.A.T. Services
(Nose Everything About Technology)



Technology brings us together and makes life easier. But.....

What should you buy?

How does it work?

And what if anything goes wrong?

Phones / laptops / tablets / TV's / Smart home systems. I can.....

- Help you choose what's right for you
 - Teach you how it works
 - Fix existing 'tech' problems

HOME VISITS – VIRTUAL REMOTE ASSISTANCE – PERSONAL SHOPPING

PRICING POLICY – Please pay me what you think is fair – SIMPLE 😊

ABOUT ME

Jed Williams – I'm 16 years old, live locally & have had my own business for over 3 years

Email: me@jedwilliams.co.uk Website: myneat.co.uk Tel: 07887 652358

Top quality Nursing and Residential Care



Beech House

Beech House Care Home provides excellence in all aspects of care for all our residents, offering the best in nursing care for the elderly and residential care for people with a diagnosis of dementia.

Our unique care service includes:

- beautiful gardens
- purpose built homes with 24/7 air circulation
- spacious rooms and wide corridors
- top quality chefs
- television with DVD and telephone in each room
- wheelchair provision at no additional cost
- high technology baths and walk-in showers
- regular minibus trips
- programme of interesting and stimulating activities



To arrange a visit, telephone 01454 412266
For more information see www.bristolcarehomes.co.uk

Bristol Care Homes
providing a unique care service

rate. We are always happy to erect it if anyone needs it for that special function.

As a club we have aspired to make really good cider. This is not so much just for the pleasure of drinking it, but for the pleasure of keeping alive a craft and involving the whole community in the process. We strive to always improve our cider and experiment a little. We continually try to improve the process by which we make it and exercise a high degree of control and cleanliness. Our cider brand is 'Littleton Lifesaver' and you can usually find it for sale in the White Hart. It is a traditional dry, still cider and weighs in at about 6.5% abv. Please try it when you next visit.

Our club is not a profit-making enterprise. We aim to cover our costs and no more. Above all the cider club is a social club with a strong community ethic. We derive enormous pleasure from hosting barbeques and get-togethers in the orchard for the wider community. We host an annual meeting of local cider makers for tasting our brews and trading techniques but mainly just to be sociable. Pressing days are always fun, good hard work and everybody is welcome to help where they can – or just to watch the process.

The club meets once a month, and we also have monthly work parties to keep up with the maintenance of the orchard and equipment. As a club we are registered with HM customs, hold a hygiene certificate and carry insurance to cover the club activities and marquee hire.

Members come and go, and we are always happy to welcome new members from around the parish. If anybody would like to join us, then please contact me at jteturton@gmail.com or our membership secretary ian.dibble63@gmail.com.



www.olvestonpreschool.co.uk/pilning-site



Pilning Pre-School



Offering
amazing
childcare to
children
aged 2-5 at
the heart of
our local
community.

Pilning
Village Hall
Open 9:00am
- 3:00pm
Tel:
01454612074



Olveston Parish Council

Pat Savage

Councillor Vacancy

Following the recent resignation of Councillor Robert Harris, there is a vacancy on the Parish Council. Robert worked tirelessly on the Council's behalf. We wish him well as he pursues a more leisurely time on the Bowls green! Do you have time or expertise which could benefit your local community? Would you like to make a difference and be involved in shaping its future? There is much to get involved with; over the next year the Council will be progressing and developing projects which will benefit the lives and well-being of our residents. Perhaps you have some local knowledge, an interest in the environment, biodiversity, or planning, or perhaps just a general desire to get involved? If you are interested in joining a diverse team of volunteer Councillors and helping to look after our parish, you could be just the person.

Check out the Olveston Parish Council website for more information by visiting www.olvestonparishcouncil.gov.uk for additional information and to obtain an application form contact the Clerk to the Council by emailing clerk@olvestonparishcouncil.gov.uk

VAS Sensors

We have now purchased a second sensor to add to the one donated by a local businessman. The sensors are moved around the Parish at regular intervals. Councillor Miles Grocott has now taken on the responsibility of ensuring their siting and retrieving the information relating to speeding throughout the villages.

Speed Awareness

A refresher session was held recently at the Parish Hall Car Park. It was good to see those of you from previous exercises and to welcome new volunteers. If you are interested in joining the team, please email the clerk@olvestonparishcouncil.gov.uk

 **PawsPetCare**
...simply for the love of animals

Providing care for your pets
when you need it

Contact Helen for a friendly and reliable service
07493 153520 or enquiries@pawspetcare.com
www.pawspetcare.com

Frontline Martial Arts

Traditional Martial Arts / Taekwondo

Mighty Mites (under 10's): Fridays 4.30-5.15pm at
Juniors (ages 10-13): Mondays 7.15-8.15pm
Adults/over 13's: Mondays 8.15-9.45pm
at Alveston Youth Centre



Tel: 07771 692222
www.frontline-ma.co.uk

SO SMART

Cosmetic Paint & Alloy Wheel Refurbishment

www.sosmartalloywheels.com

Bumper scuffs
Machine polishing
Minor panel damage
Kerb Damage
Fully Refurbished

Mobile Service available for Alloy Wheel Repairs

M: 07816526304
E: sosmart2k3@aol.com
Based in Almondsbury, South Glous

THE WHITE HART INN Olveston



Traditional 17th Century English Pub

Catering for Parties and Functions
Wide variety of cask & keg beers
Skittle alley & pool table available
Book now for Skittle Matches
Award winning courtyard garden

Telephone: 01454 612175

FRANCIS DESIGN & BUILD Carpentry & Building Services

For all aspects of carpentry

Doors, Skirting, Kitchens, Fencing,
Decking, Stairs, Timber frame etc.

Call Craig on 07970 514409
(or, if busy)

email: craigyoung0308@live.co.uk



Old Down Play Area - Grand Re-opening Competition

Great news! Old Down Play Area is set to re-open with a whole new range of equipment in August this year. So, we are launching an exciting and fun competition to find out who will have the pleasure of performing the grand opening ceremony. And it could be you – if you're 11 years old or under that is! Yes, rather than bringing in a local celebrity we thought it would be a great idea to ask the children of the parish to create a drawing of what outdoor play means to them. The area was designed and chosen by the local children, so it only seems fitting that one of them should open it.

The winner of the best drawing will get to cut the ribbon and declare the new playground, with all its fantastic play equipment, officially open! The drawing will be professionally framed and given back as a keepsake, and an etched copy of it will be mounted within the playground.

The Old Down Play Area Project (ODPAP for short) has been a real team effort. It's been chaired by Councillor Di Buckley and supported by Helen Mansi as Secretary.



New Clamber Stack with Tower and Slide

Work will start on the refurbishment at the end of July with an expected finish date of mid-August. Funding is mainly from charitable grants with a shortfall

Severnside Heating & Plumbing



- Installations
- Servicing
- Repairs

Working locally since 2003. An experienced heating and plumbing engineer. For a no obligation quote please call Mike
Mob: 07554 825813 Tel: 01454 613780



LA Electrical Services

Sockets, Lights, Security Lighting, Landlords Reports, Inspection & Testing, Consumer Units, Electric Heating, Rewires, New Builds, Garden Electrics, Car Charging Points, Solar PV, and More..

Your Local Electrician Richard Corney



01454 633 336
laelectrical.com



GARDEN AND GROUND MAINTENANCE

- Stump grinding
- Tree pruning & removal
- Hedges & shrubs trimmed
- Grass cutting
- Fencing
- Turfing
- Garden clearance
- Spraying for weed control
- Patios power washed
- Gravel areas laid

For a no obligation quote please call Chris Till on
07971 460239 / 01454 851771
or visit raysgardenservice.co.uk



**"The Friendly pub
where you arrive as
our Guest and leave
as our Friend"**

BOARS HEAD AUST

01454 632278

- Your local friendly Village pub
- Open 7 days a week
- Food Served from 12.00pm to 9pm every day
- 1st Friday of the month is Quiz Night
- Breakfast Available
- Chefs Table Food Experience
- Parties Catered for
- Open Log Fires
- Real Ales and Premium drinks available
- 5 star Food Hygiene rating

MAIN ROAD, AUST, BS35 4AX

top-up being provided by Olveston Parish Council. There will be a lot more to play on for all different ages and some state-of-the-art equipment. The Clamber Stack with its tower and slide (pictured on the previous page) will be the first of its type in the country. Parish Council Chairman John Hughes says *"The Parish Council is delighted to support all those that have contributed their time to make the new play area a real gem for all the children in the Parish. We very much look forward to seeing the results of the competition and the play area reopening."*

The "What Outdoor Play Means to You" competition is open to all children in the parish, 11 years old and under, and will be split into three age groups for judging, with one overall winner. There will be prizes for each of the runners up in the three age categories. Drawings can use any medium but must be the child's own original work. The judging panel will be made up of members of the Parish Council and Helen Mansi. Drawings together with name, age and contact details can be scanned and e-mailed to ODPAP@outlook.com or posted into the Olveston Parish Council post box at the Queen Alexandra Memorial Pavilion (at the back of the Old Down football field). The closing date for all entries is 1st August 2021. So, sharpen up the pencils, break out the brushes, put pen to paper and get your little ones involved. Further details of how to enter, together with the competition rules, terms and conditions, can be found on the Olveston Parish Council website: www.olvostonparishcouncil.gov.uk

Pilning Station Update

IC Awkley

Transport Correspondent

I cycled to Pilning Station on the afternoon of Saturday 5th June to watch the 15.32 train depart. This is the Cardiff to Taunton service, one of only two trains that stop at Pilning each week - you know the story.



To my surprise eleven passengers got on the train: a mixture of cyclists, walkers and drinkers who had been in The Plough.

Well done to the Pilning Station Group for promoting this local station.

**FOR ALL YOUR
PRINTING AND
DESIGN NEEDS**

motion
motiondesign&print

01454 631289
Based Severn Beach

BUSINESS CARDS
HEADED PAPER
NCR SETS & PADS
FLYERS & LEAFLETS
BANNERS & POSTER
CORREX PRINTING
BROCHURES & FOLDERS
GRAPHIC DESIGN
WEBSITE DESIGN

info@motionprinting.co.uk
www.motionprinting.co.uk

ALMONDSBURY PHYSIOTHERAPY AND SPORTS INJURY CLINIC

Louise Brinson

Chartered Physiotherapist, hpc reg

Almondsbury Surgery, Sundays Hill
Almondsbury, BS32 4DS

Tel: 07786915442

Fax: 014540615745

E-mail:

physioulouise@hotmail.co.uk

Also at Aztec Spa Leisure Club

ACE1
Window & Gutter Cleaning
Window Cleaning
Gutter Cleaning & Repair
Fascia & Soffit Cleaning
Conservatory Roof
Solar Panel Cleaning
Power Washing



M: 07590 201264
T: 01454 436162

Olveston and Tockington

Parish Hall
07780 515317

A great venue for :

- Fitness
- Parties
- Public events
- Music & Dance

Check availability & book online at www.olvestonparishhall.co.uk

"Our newly decorated Hall"



Aust Parish Council

Emma Pattullo

Aust PC has continued to meet via Zoom until May. A successful Annual Parish Assembly was held in April, with a number of residents attending. A range of interesting issues was raised, including the flood defence works at Aust, overnight parking concerns and problems with postal addresses in Elberton.

Unfortunately, the PC was not able to hold a normal council meeting in April as it clashed with the mourning period following the death of HRH Prince Philip. The May meeting was therefore rather longer than usual. May is the start of the council year, and I am pleased to report that Catherine Collinson has been elected as Chairman of the Parish Council for another year. It was also the first meeting for our new councillor, Jeremy Warren. Welcome Jeremy, and thanks for stepping up to represent your community!

Following a successful internal audit, the council has signed off the accounts and governance return for the last financial year. These and the supporting paperwork are legally available for inspection during the 'public rights period' which will run from 7th June – 16th July inclusive. More details can be found on the parish council noticeboards or can be obtained from myself, my contact details are below.

Due the expiry of legislation allowing the parish council to meet remotely, we will be returning to holding in-person meetings at Elberton Village Hall from 8th June. (As I was employed during the coronavirus restrictions, I am looking forward to finally meeting all the councillors in real life, rather than via a Zoom screen!)

Residents are permitted to attend physical council meetings, although we reserve the right to limit numbers in order to maintain social distancing. You will also be asked to wear a face covering at all times, unless you are addressing the meeting or are medically exempt. If you would rather not attend a meeting in person, you are welcome to raise any issues of concern with your local councillors or contact myself. Draft minutes of each meeting are normally published on the web page within one week of the meeting, or I can provide copies on request.

Emma Pattullo
Parish Clerk
01454 837271
austparishcouncil@gmail.com

The home of fair price funerals

A direct cremation from £1475*

A simple funeral service from £2480*

Bespoke funeral services for burial or cremation

Religious, spiritual or humanist funeral services

Fully guaranteed pre-paid funeral plans



177 Crow Lane, Henbury, Bristol, BS10 7DR
Telephone: 0117 950 8066
Website: www.bcm-funerals.co.uk
Email: admin@bcm-funerals.co.uk

*Conditions apply

Windmillcare Homes

— great places to Live



Windmill House

The original, elegant home in a delightful rural setting with 2 acres of beautiful gardens delivering unrivalled care

01454 413818



OSBOURNE COURT

Our brand new purpose-built home providing exceptional specialist dementia care in the heart of the village of Stoke Gifford

0117 944 8700

**Residential, Short-term Respite
and Day Care available**

enquiries@windmillcare.com

or www.windmillcare.com

'Indawes - Outdawes'

Decorating and
Home Improvements

Painting | Wall Papering
Floor Laying

Martin Dawes 07720 509653
martin.dawes@live.com

ROG SKUSE PAINTER AND DECORATOR

FOR ALL YOUR
INTERNAL AND EXTERNAL DECORATIONS

CALL ROG
ON
07870459771

News from St. Mary's

Debbie Harries



Bristol Sinfonietta

We have some wonderful news to give you about an upcoming event which will lift everyone's spirits!!

On Saturday 17th July at 7.30pm the Bristol Sinfonietta will be returning to give us another concert of outstanding classical music. Due to Covid restrictions it is two years since they played for us, so we are hoping that the church will be as full as we are allowed, to celebrate the return of this superb professional orchestra.

Tickets are priced at only £8. It will be a fabulous evening with music for everybody. Please do come and support these wonderful musicians, who are playing this concert in aid of the Church Tower Fund.

Craft Bus

We are hoping to have the Arc Bus visiting the village on Saturday July 17th between 10.30am and 12pm. Parents can visit the bus with their children and enjoy a craft morning! This is free of charge. The bus will be parked at Cromwell Court opposite the Olveston Stores.

Look out for further information around the village.

Lockdown Art Exhibition. October 2/3rd St Mary's Church

Have you been painting, drawing or sewing during the Pandemic? On October 2nd and 3rd, St Mary's Church is hosting an informal exhibition of how creative you have been during the Pandemic. There are already around a dozen committed Artists willing to display some of their work, but if you have something to exhibit, please get in touch with Sue, 614861, or any church member. We will muster all the screens and tables we can, but the items can be displayed just as they are. Any donations raised during the Exhibition will go towards the increased cost of heating the church for which the PCC have agreed to use 50% sustainable Gas, when the contract is up for renewal in two years' time.



Tel: 01454 885766
Mob: 07724 166917

Ridge Roofing and Property Maintenance

Roofing ❖ Chimney Repairs ❖ Lead Work
Guttering ❖ External Painting
General Maintenance ❖ **FREE Estimates**

D-CR DOMESTIC APPLIANCES

Fast, friendly and efficient service
Sales - Service - Repair

Tel: 01454 850522 - Mobile: 07917441539
Email: d-cr@live.co.uk - Web: www.d-crdomesticappliances.co.uk



DOMESTIC APPLIANCE REPAIR SPECIALIST

- WASHING MACHINE
- TUMBLE DRYER
- DISHWASHER

- FRIDGE FREEZER
- COOKER
- HOB OR HOOD

Proud member of:
 **WTA**
Whitapudi's Trade Association

Business for Sale

Successful local oven cleaning business for sale. Very simple to run, this well established franchise offers many advantages including:



- Immediate cash flow** with work scheduled in the diary from day one.
- Lots of lovely **repeat customers** with new customers added every week.
- Hours to suit:** part-time or full-time, one or two people.
- Full training and support.
- Experience days available.

Call now for more Information:
07557 110 932 | ovenclean.com



Trevor Anderson

Les Harper



Once again Meeting Point is very sad to report the death of a past editor. Trevor died after a short spell in hospital. He served, uniquely, two periods as Editor; firstly in 1989/1990 and then in 1999/2001. He was very dedicated and meticulous in this role and was much liked and admired by the rest of the Meeting Point team. He had a rather dry Irish sense of humour, and devised ingenious April 1st articles, published under the enigmatic byline 'Dr Rovert'.

In 1998, while he was Assistant Editor, Trevor set in train the complete transformation of the way Meeting Point is produced, taking advantage of the developing technologies which he had observed. Previously the editor's manuscript was typewritten by a small team of typists, advertisements and illustrations were literally cut and pasted by the late, great, Freddy Pitts, the pages were photocopied commercially and then collated, stapled and folded by another team of volunteers. In the new system the editor wrote the text on a home computer, adverts and illustrations were inserted by a graphic artist at the Printers, finally the magazine was printed and bound mechanically by the Printers. There was some sadness at the demise of the old hands-on processes which involved many volunteers, but the result was a much better quality magazine, with capability to include more illustrations and eventually full colour.



Trevor was much involved in many local activities and organisations and will be greatly missed. We send our sympathy to Isobel and to the family.

This photograph was taken in 1991 at Meeting Point's 15th Anniversary, with Trevor (in the brown sweater) are previous editors, Rev. John Randall (the magazine's founder), and Freddy Pitts our Chairman then and for many years.

LINELA

embroid | print | promote

One place for everything promotional.
Specialising in embroidery,
printing and branded gifts



T Shirt Printing
Sports wear
Work wear
School wear
Promotional Products

Call us: 01454 615300

Email us: sales@linela.co.uk

www.linela.co.uk

BonneFreshClean

Carpet & Upholstery Cleaning Specialists

Love the look and smell of
clean and fresh carpets and
upholstery?

Bonne Fresh Clean brings to
you a professional carpet and
upholstery service that will
leave them sparkling and fresh.

Call for a free
no obligation
quote today!

- Thorough, gentle deep cleaning, no residues
- Child and pet friendly treatments
- Latest industry approved qualification and full insurance



Bonne Fresh - Relax and enjoy beautifully clean
and fresh carpets and upholstery!

T: 01454 436001 M: 07774 908410

W: www.bonnefreshclean.co.uk

44 Townsend Lane, Almondsbury, Bristol, BS32 4EQ



Livewire Electricals
Electrical & Mechanical Solutions



Domestic, Commercial
and Industrial Installations

All electrics for new build, extensions and
alterations to satisfy mandatory Building
Regulations. Landlords safety inspections
Portable Appliance Testing (PAT)

Electrical and electronic service and repair
For 24 hour call-out service available please
call Peter Jones: Tel: 07880 858785

Email: pete.livewire@blueyonder.co.uk

Local number Tel: 01454 613482

Visit our web site at
livewire-electrics.co.uk



People Can't Work Without Tools!

Thornbury Rotary Club, along with other Rotary clubs, has
been supporting "Tools for Self Reliance" for many years. It is a
UK based charity working to help relieve poverty in Africa by
renovating and sending redundant tools to them. They then work
with local African organisations to deliver a programme of tools
and training that brings about effective and sustainable
change for carpenters, builders, blacksmiths, artisans and
their communities. Primary countries they work in are Ghana,
Malawi, Sierra Leone, Uganda and Zambia.

So, if you have tools you no longer require, please contact
Rotarian

Robin Cole-Morgan on 01454 414281

He will arrange to pick up the tools and take them away at a time
that suits everyone.

What you could declutter and donate:

Garden Tools and Workshop Tools (for example, spanners,
screwdrivers, chisels, planes, and hammers). They can be hand
tools or powered.

Thank you!

Friends of St. Mary's

The prize winners in the June draw, held on 3rd June 2021 at the Friends'
Committee Meeting were:

Amount	Number	Name
£150	166	Mrs E Dobson, Rudgeway
£75	510	Mr P Floyd, Old Down
£25	409	Mr C Fairhead, Oldbury-on-Severn
£25	365	Mr G Clark, Olveston
£25	247	Ms M Dale, Olveston
£20	599	Miss J Davies, Olveston
£20	303	Mrs B Morgan, Tockington
£20	385	Dr R Slade, Olveston
£20	496	Mrs E Marsh, Tockington
£10	620	Mr T Anderson, Olveston
£10	534	Dr & Mrs M Wright, Olveston
£10	241	Ms M Dale, Olveston

If you are not yet a member and wish to join the lottery, please telephone
Andy Phillips on 01454 614890.

Old Down Cricket Club

Tony Gardner
07889727729

150 Club Winners June 2021:

£50	Reg Purchase
£15	Simon Panes
£5	Robin Davey

Latest £25 Bonus Ball Winner:

22/05/21 Russell Knight

July Fixtures at The Park (Start 1.00pm)

03/07/21	2nd XI v Nailsea
10/07/21	1st XI v Winterbourne
17/07/21	2nd XI v Brislington
24/07/21	1st XI v PR Royal
31/07/21	2nd XI v Bedminster

Up the Down!

Beauty at the Barn

4, Grey Gables, Vicarage Lane, Olveston
For appointments telephone Nicola on
01454 201717



Jessica Manicures
GELeration Nails
Shellac Nails
Jessica Pedicures
Spray Tanning
Waxing
Ear Piercing
Eyelash Perming
Eyebrow Shaping
Eyelash tinting
And more...
Evening appointments available
Gift vouchers available



Olveston & Tockington Tennis Club

"Your local tennis club, next to Olveston Parish
hall"

**Make 2021 the year to get back
on court.**

Coaching for all ages.

**Fabulous clubhouse with changing
facilities, kitchen, TV and table tennis.**

Call Martin 07720509653

Everyone welcome



LOCAL TO ALMONDSBURY

T: 01179 692817

M: 07974 088147

E: breed.bins@yahoo.co.uk

**Commercial and Domestic Skip Hire
& Aggregate Supplies**



MD Aerials

Call Michael Dagger



T: 01454 418 341 M: 07817 304 236



Freeview – Freesat – Sky – DAB Aerials

Wall mounting LCD & Plasma
televisions setting up & tuning



mike@mdaerials.co.uk
www.mdaerials.co.uk

MOBILE BEAUTICIAN

(Based in Olveston)

- Waxing
- Shellac coloured gels
- Massage
- Manicures
- And much more!
- St Tropez Spray Tanning
- Ear Piercing
- Facials
- Pedicures

All available in the comfort of your own home
and better than salon prices!

Call Katie 07707 021195

www.kbeauty.co.uk



RB Foot Health Clinic
Professional Mobile Foot Health Care

...footcare in
the comfort
of your own home

For the professional
treatment of

**Callus
Corns**

Cracked Heels

Fungal & Thickened Nails

Ingrowing Toe Nails

Toe Nail Cutting

Contact Rachael
Mob: 07760 595224
info@rbfoothealthclinic.co.uk
www.rbfoothealthclinic.co.uk

Rachael Button - DIP SAC MPS PRACT QUALIFIED NURSE



GreenForce

This month the Green Force Group wish to let you know that our church, St Mary's, is doing its best to be as green as possible within the constraints of its existing finances.

In May, the treasurer David Prothero presented the church council with the following quotations relating to the costs for both renewable and non-renewable gas which is used for heating the church.

Non-renewable: Annual Cost = £4,246 (duration of contract - 36 months)

25% renewable: Annual Cost = £4,461 (duration of contract - 24 months)

50% renewable: Annual Cost = £4,667 (duration of contract - 24 months)

100% renewable: Annual Cost = £5,077 (duration of contract - 24 months)

The Parochial Church Council then asked Green Force for their view. Resulting from this, the PCC voted unanimously to accept the following conclusions:

(a) On termination of the present gas supply contract, the PCC adopts a 50% renewables contract for the supply of gas for a two-year term at an increased cost of £400 annually. The new contract is due in 2022.

(b) The PCC monitors the condition of the Gas Boiler with a view to replacement at the end of its anticipated viability with a Hydrogen Boiler if hydrogen becomes a realistic alternative to gas. The expected viability is about 10 years.

Red Kites

IC Awkley*

Whilst the occasional sighting of a red kite over Olveston is becoming more common, seeing six at one time most be worthy of record. On the morning of Sunday 13th June, whilst cycling along Ingst Lane, a large flock of birds was observed following the silage cutters in a nearby field. The birds were swooping down into the newly mown grass, presumably feasting on small mammals such as voles and mice. Some young rabbits were also seen to be dashing for cover. Amongst the gulls, crows and rooks, were no less than six red kites and four buzzards. The kites were easily the most accomplished



Delivering the highest standards of homecare in South Gloucestershire for 14 years

Inspected and rated
Outstanding ☆
Care Quality Commission

good care guide
★★★★★

Great British Care Awards
2016 WINNER

Premier Homecare is the leading homecare provider in North Bristol and South Gloucestershire, having cared for over 2,000 families, ensuring they are safe, healthy and looked after

Call today for help with a loved one

PREMIER HOME CARE

0117 959 2013
www.premier-homecare.com

- Short and long term home help
- Flexible hours
- Bespoke care support
- Highly trained and reliable carers
- Personal Care
- From cleaning to 24 hour Live-In care



el cuisine

Catering for any occasion
Private parties, Birthday and Anniversary Celebrations,
Weddings, Funerals, Corporate Events,
Formal Dinners, Shoot Lunches... whatever the occasion

www.el-cuisine.co.uk Please contact Emma 07931952939 info @el-cuisine.co.uk



Tockington Manor School and Nursery
for boys and girls aged 2 to 13 years

We're open for socially-distanced private tours

Come for a tour and discover our small friendly classes, enviable success rate in securing senior school places, wrap around care and dedicated nursery facilities.

If you're considering a school place for your child in September 2021 please contact us to arrange a private tour.

Call to book your private tour or 1:2:1 video call: 01454 613229

flyers, as they performed aerobatic tight turns before diving into the mown grass.

Earlier that morning, two more red kits had been seen flying low over Pilning Station. In fact, in the course of 30 minutes, I saw more red kites than trains. I may well give up train spotting for bird spotting if things carry on like this.

** Meeting Point's Transport Correspondent is now considering a new post as our Ornithological Correspondent.*

Thornbury Rambling Club

Tony Kite

Did you go walking and exploring during lockdown? Did you discover new footpaths? Would you like to continue this exploration in company now that we have greater freedom to meet up and walk in the lovely countryside?

Thornbury Rambling Club (TRC) is a local walking club with members who live in your area. Regular walks are held, mainly on Sundays but not exclusively so, and they occur throughout the year. Our programme takes in local footpaths as well as more distant visits to places such as the Cotswolds, Forest of Dean, Mendips, Quantocks and many more beautiful areas.

These walks vary to suit the conditions and are always good company. If you are interested in flowers, wildlife, geology or local information there is usually someone in the group who is able to answer your questions and queries.

Visit our website at thornburymblers.org.uk to see our programme of walks or get in touch with the club secretary Helen Willoughby at thornburymblers@gmail.com, or Tony Kite on 01454 201042.

A Mystery

Ceri Dash

My mother, who lives in Orchard Rise, received a letter through her letter box that has been passed between various houses in the road. It is addressed to a Mrs Joan Morris at 4 Orchard Rise. This lady doesn't live there anymore, but maybe once did.

I've taken the liberty of opening the letter to see if I can find any more clues as to the sender. It is a birthday card plus several black and white original photographs. (Probably dating from the 1940s or 1950s)

It would be such a shame for these to not get to the intended recipient. Can Meeting Point readers help in anyway? Get in touch with the editor if you have any ideas.

Natalie Gladstone BSc(Hons) Ost

OSTEOPATH

Back & neck pain, arthritic/ joint pain,
sports injuries, pre /post natal, whiplash,
cranial treatments, rehabilitation Pilates.

Tel: 07870 219 249

www.nataliegladstoneosteopath.co.uk

OLD DOWN HILL, TOCKINGTON

Easy parking. Day & evening appointments.
REGISTERED: EXPERIENCED: PROFESSIONAL



Digger and Driver Available
Out-Door Services

A. D. D. PLANT

Groundwork, Digging & Clearing
Turfing, Any outdoor work

Tel: 01454 417372

Mobile: 07866 407683



keeping your garden
beautiful...

ask us about
LAZYLAWN

- LazyLawn - superior artificial grass supply and installation - licensee for Bristol & South Wales
- landscape design and build with 25 years experience
- tree surgery
- garden makeovers
- regular garden maintenance

Garretts Gardens and Landscapes

for Garretts Gardens or Landscapes
t 01454 614111 m 07974 109919
info@garrettslandscapes.co.uk
www.garrettsgardens.co.uk

Come rain or shine,
lisa costa estate
agents have the
experience and
knowledge to take
you smoothly through
the moving process.



lisa costa

RESIDENTIAL SALES & LETTINGS

53 High Street | Thornbury | BS35 2AR
01454 279734 | sales@lisacosta.co.uk | lisacosta.co.uk

Please note: If your property is currently on the market, the terms and conditions of your Existing agency agreement must be considered before instructing ourselves.

Old Down Play Area Competition

GRAND REOPENING

It could be you!
that gets to cut the
ribbon.....



To enter just tell us in a drawing 'What outdoor play means to you'
The winner of the best picture will officially open the new playground
There's prizes too for the runners up
Open to all parish children 11 years and under
Entries can be emailed to ODPAP@outlook.com or posted to OPC post box at
Queen Alexandra Memorial Pavilion, Old Down Football Field

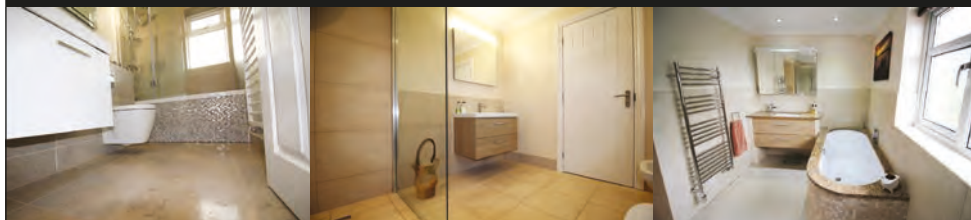
CLOSING DATE FOR ENTRIES
1 AUGUST 2021

Full details can be found in the July Meeting
Point or visit
www.olvostonparishcouncil.gov.uk

Paul Whittaker

BATHROOMS & WETROOMS

DESIGN . SUPPLY . INSTALLATION



Tel: 07879 666221 . Website: www.paulwhittakerbathrooms.co.uk

**Your advert could be here
and reaching 1,500 households**

**Contact Bernard
meetingpointadvertising@gmail.com**

Armstrong Hall Action Alliance

In March this year, the Armstrong Hall Charitable Trust regrettably announced the permanent closure of the Armstrong Hall Complex, as funding sources are no longer available for refurbishment post-Covid. In response to the Trust's decision to keep the Armstrong Hall closed, individuals from across Thornbury and the surrounding area have come together to form the Armstrong Hall Action Alliance (AHAA). Made up of members from several of the Hall's historic user groups, as well as other individuals concerned about the impact of the Hall's closure upon Thornbury, AHAA hopes to work with the council to find a way of restoring the Armstrong Hall Complex and opening it, once again, for the benefit of the community.

Many groups rely on the Armstrong Hall as a location for their activities in 'normal' times. This includes the thriving Thornbury Arts Festival and Jazz Festivals, the 100-strong membership of Thornbury Musical Theatre Group, performing youth organisations such as the Northavon Youth Theatre Company and TMTG Juniors which have given stage experience to hundreds, if not thousands of young people in the town over the years. In addition, there is the Thornbury Picture House, active U3A societies, Thornbury Horticultural Society, exercise classes, charities and local schools and more that make use of the space. For many of these groups, there is simply not a viable alternative venue within the town should the Armstrong Hall remain closed.

Turnberries has been regularly cited as an option, however in its current form, it is not fit for purpose for bigger and more active groups or for larger events. And while a redevelopment of the Turnberries site has been suggested by the Armstrong Hall Trust, such redevelopment projects take years. Many user groups quite literally cannot afford to wait this long, with cash reserves already dwindling due to the pandemic, and as such they may be lost from the community permanently.

The newly formed Armstrong Hall Action Alliance aims to restore the Armstrong Hall complex to compliant use, to meet the pre-existing and immediate post-Covid needs of the community, while looking to the future and the needs of the town.

To get involved or keep up to date with the progress of AHAA, please email info@ahaathornbury.co.uk or search Armstrong Hall Action Alliance on Facebook. The group is particularly interested in receiving your memories of the Armstrong Hall and what it means to you so please get in touch if you have something to share.

Maria Vizard - Tailor Made Tuition

Bespoke tutoring meeting the individual needs of your child.



For further information please contact me:
 Maria Vizard, BEd Hons NPQSL QTS
 Email: Vizard243@btinternet.com
 Mobile: 07801983643/01454417255

- Primary age- Year 9
- Locally based but will consider travelling to you
- Competitive pricing: £15.00 for 30 mins or £25.00 per hour (discounts available for siblings/pre-paid block of sessions/pupils eligible for FSM)
- Fun and engaging sessions
- Developing a love for learning whilst nurturing a growth mindset
- Pre and Post Learning sessions offered
- Revision and entry exam preparation sessions available



Thornbury Art Club's Summer Exhibition 2021

Thornbury Art Club is emerging from what we hope was a very productive 'Lockdown'. Our 2021 Summer Exhibition opens at the end of the month.

Put the dates in your diary now! -- Saturday July 24th – Sunday August 1st.

We look forward to welcoming back visitors to this annual event which is the highlight of the year... a chance to show our skills and what we have been doing over the past twelve months. We are always striving to improve, trying new techniques, exploring different ideas to bring life and depth to our paintings.

So, do come and see what has inspired us this year. It will be a very diverse and interesting show because there are so many participating artists. We are delighted that members of Thornbury & District Stroke Support Group are exhibiting with us - so many contrasting styles, thought processes, choices of materials, etc. There will be something to appeal to everyone, and a great selection in cards. Most paintings are for sale, so this will be a chance to acquire a piece of art that is quite unique.

Our Summer Exhibition takes place at the Methodist Church Hall, Castle Court, Thornbury, just a few steps from the High Street. Opening times are: Monday – Saturday, 10am – 6pm, and Sundays, 2pm – 4pm. Entry is free, with good disabled access. We look forward to seeing you!

June Quiz Answers

- | | |
|-----------------------|-----------------------|
| 1. All over the world | 9. Forever and a day |
| 2. Children in need | 10. Man overboard |
| 3. Flat iron | 11. Read all about it |
| 4. High seas | 12. Cake mix |
| 5. Peace be with you | 13. Double decker bus |
| 6. Round Robin | 14. Dust to dust |
| 7. Altar boy | 15. The game is up |
| 8. Double cream | |

Rebecca's Sewing Room

Seamstress all your sewing needs

01454 633905 | 07855745849
 33 Cross Hands Road, Pilning, Bristol BS35 4JB
rebeccadunsford@hotmail.co.uk
www.rebeccassewingroom.wordpress.com

Tavira
 Algarve, Portugal
 3 Bed Apartment
*can accommodate up to 8 people



Modern 3-bedroom apartment in picturesque & historic Algarve town. 2-bathrooms including one en-suite, 2-balconies & roof terrace. Fully furnished, sleeps 6-8. Easy walking to thriving town centre. Close to railway station, golf courses & beaches. 30 minutes drive from Faro. Ideal for families or golfers. Tel: 07889 727729
 Email: anthonyar@aol.com - www.amintpadtavira.co.uk



Lending with Heart and Mind

**South Gloucestershire Council fund
 a not-for-profit loan scheme for homeowners
 and landlords*.**

**We understand the expense of maintaining
 your home and we work with you to take the
 stress out of funding repairs, improvements or
 adaptations.**

We see you as an individual, not a credit score.
 Our knowledgeable team of advisers will guide
 you through the process of applying for a home
 improvement loan.

For a no-obligation assessment
 or more information visit
www.lendology.org.uk or call 01823 461099

Heatherton Park Studios, Bradford on Tone, Taunton, TA4 1EU

*subject to eligibility

gsharchitects



FREE CONSULTATION

For further information please contact us on:

info@gsharchitects.co.uk
www.gsharchitects.co.uk
Almondsbury, Bristol

07780 000220

Build without planning permission

Quality design service from
concept to completion

Planning, construction drawings and
contract administration service
tailored to suit you

Domestic, Commercial ,
and Sustainable Architecture.

Experienced working with
Listed Buildings

Build your dream home in your
garden

Development Advice and Appraisal

3D Visualisation Services

RIBA

Introducing the Tree Bumblebee, *Bombus hypnorum*

Pat Thirkettle



Our two cats started to climb the *Hydrangea Petiolaris* covering our piggery to sit on top of the bird box. We know, and the local birds also know, that it is unwise to use it, although we did fledge three great tits from it a few years ago. It turns out that we have a nest of Tree Bumblebees, with which we are delighted because of the cats!

Tree bumblebees first arrived in Wiltshire in 2017 from their natural habitat in mainland Europe, through Asia and up to the Arctic Circle and have spread to the Scottish Lowlands. They are unique amongst UK species of bees with a tawny to reddish thorax, a black abdomen and a white tail.



The queens do nest-searching flights looking for a home in March and April, and all should be over by late July when the new queen leaves to hibernate underground. The colonies can build to 400 bees, but most are much smaller. They do not sting, are highly active, agile, rapid and effective pollinators.

The top photo shows the bird box covered in yellow splodges of bee faeces and there is always a hum of bee 'chatter', sometimes louder than others.

There is more information on the Bumblebee Conservation Trust website, and I wonder how many other nests there are in the Meeting Point area.

Bee photo taken from the Bee Conservation Trust website:

<https://www.bumblebeeconservation.org/>

**New Passage
Cat Kennels**

**Large Runs ~ Heated Chalets
Licensed Cattery
in Pilning**

**Tel: 01454 632 456
www.catkennels.co.uk**

jfl
Design & Planning



Home Extensions - Change of Use - Floor Plans
Full Planning & Building Regs drawing service
Almondsbury based with successful local projects

contact *Julian Lowther* for friendly professional advice

t:0117 2591059 julian@jfl-planning.co.uk
m:0789 0179546 www.jfl-planning.co.uk

G.V.R PITCHER & SONS

**The Yard
Haw lane
Olveston
Bristol**



**TEL: 01454 619299
MOB: 07989 208964**

Property Care & Improvements

CAR - VAN - MINIBUS

**SELF DRIVE - LOW-COST - SHORT/LONG TERM
WIDE VEHICLE SELECTION - CONTRACT HIRE**

- Fully Comprehensive Insurance
- Extra Low Off Peak Rates
- No Hidden Charges
- Breakdown Cover
- Cars
- Minibuses
- Transits
- Sprinters
- Lutons & Tail Lifts

THORNBURY
SELF DRIVE HIRE

Established Over 20 Years

www.tsdhire.co.uk
Mob: 07768 232424
Email: info@tsdhire.co.uk

01454 414111

COOPER ROAD, THORNBURY IND. EST., THORNBURY, BRISTOL BS35 3UP

THORNBURY AUTOBODIES

Car & Commercial Body Repairs

- Crash Repair • Re-Sprays • Dent Repair
- Spray Booth Facilities • Full Body Jigging • Recovery
- Top Standard Of Work
- Fully Insured
- Insurance & Private Work

Courtesy Vehicles • Free Estimates • Over 25 Years Experience

THORNBURY
01454 419985

Email: thornburyautobodies.ps@gmail.com www.thornburyautobodies.co.uk
Cooper Road, Thornbury Industrial Estate, BS35 3UP

WJC

Plumbing & Tiling

Bathroom & Wet Room Design & Installations
Tiling • General Plumbing
Kitchen Installation • Plastering

Billy Cook
WJC Plumbing & Tiling

07748 085 920
wjcpumbing@outlook.com

Butterflies

Paul Godwin

Butterfly watching has become a very popular pastime and has now moved from the collection of butterflies to identification and study through photography. Organisations such as Butterfly Conservation collect these records and can therefore map species across the country. In Britain and Ireland there are 59 species. Butterflies have specific habitats and therefore are not visible in all areas, some are migrants and others resident.

Butterflies belong to an order of insects known Lepidoptera which means 'scale wing' and there are five resident British butterfly families in the UK;

- Hesperidae – Skippers
- Pieridae – Whites and Yellows
- Lycaenidae – Hairstreaks, coppers, blues
- Nymphalidae – vanessids, fritillaries and browns
- Papilionidae – Swallowtail

There are 4 stages in the life cycle of a butterfly: The egg, caterpillar, chrysalis, and the adult. Each species of butterfly will spend different amounts of time at each various stage.

The photographs below are a small collection of butterflies I have photographed locally in woods, fields, and lanes within our local area between April and June this year. I have included an example from each family other than Papilionidae (Swallow tails) as I have not identified these within this area.

Some, such as the Orange Tip butterfly were very abundant this year between April and May whilst others such as the Speckled Wood were more abundant in June. Populations of different types can vary greatly between years as weather conditions and land management in gardens, woods and fields can affect this. Some butterfly types have a very specific habitats and if this is disturbed it can significantly affect a population of butterfly in a specific year.



The Orange Tip

Belongs to the Pieridae Family and has been highly visible in our area this year. This photograph was taken near Mumbleys (Bond Lane) in April. It is the male who has the orange tipped wings and is without doubt the most visible. The female can be confused with a Green Veined White but can be identified by



GARDEN MACHINERY SPECIALISTS
SALES, SERVICE AND SPARES

E-MAIL: themowerdoctor@hotmail.co.uk WEBSITE: www.themowerdoctor.net
ADDRESS: Unit 2-3 The Rearing Unit, Oldbury Lane, Oldbury-On-Severn, BS35 1RF
TELEPHONE: 01454 411 701








DEALERS FOR:










optimus™

"Optimise your Health"

Please Enquire:

Tel: 01454 528608
Email: info@optimuscp.com
Web: optimuscp.com

49 The High Street, Thornbury, BS35 2AS

PHYSIOTHERAPY

CHIROPRACTIC

PODIATRY

CHIROPODY

OLDOWN

TREE SURGEONS

TREE SURGERY AND HEDGE MAINTENANCE

PROFESSIONAL. QUALIFIED. FULLY INSURED.

www.oldowntrees.org

Antony Leicester 07800512408 info@oldowntrees.org



EC COMPUTERS

Computer support and solutions for the home and business user.

- PC/laptop repairs
- Virus removal
- Wifi/broadband issues
- Sponsors of Olveston FC

How can we help? Tel: 01454 281 500 Web: www.eccomputers.co.uk

IT Support/Repairs Office Equipment Print Solutions Telecoms Cyber Security Managed Services Software/Database applications

the black spot on the front edge of her fore wings. Both the male and female have beautiful green marbled underside to their wings which gives them excellent camouflage on plants such as cow parsley. There is only one brood per year, and they emerge in April and can last into early July although writing in June I sense that the recent rain has shortened their season. Eggs are laid on Cuckoo flowers, Garlic Mustard, and hatch after a week. The caterpillar stage lasts for about 25 days and when the Chrysalis is formed amongst vegetation it remains for 10 or 11 months before hatching.

Small Copper

This belongs to the Lycaenidae Family. The photograph was taken in fields on The Common, Olveston in May. They thrive in hot and sunny conditions. In cold and wet conditions their population is significantly



affected. They can be seen near or on the ground resting on stones in the sunshine or in long grasses. They can produce 3 broods in a good year between April and November. In cool and wet summers their populations crash and take several years to recover. The eggs are laid on sorrel or dock leaves. The caterpillar emerges in about 1 week and can be found on underside of leaves and this stage can last for up to six months. The chrysalis stage is short and is about a month until the butterfly emerges. It does not commonly visit gardens and favours flowery fields, long grasses, heaths and hillsides. The male tends to be smaller with more pointed wings.

Common Blue

The Common Blue belongs to the Lycaenidae family and is sighted quite frequently. It occurs in meadows, woodlands as well as gardens. The one in picture was taken near Littleton on Severn in May. It produces a double brood and can be seen in May and June and again in August and September. Eggs are laid in a range of plants including clover and caterpillars emerge after 9 days. The caterpillars produced later in the year can hibernate and spend 10 months at this stage. Often the chrysalis is formed near ant nests and last about two weeks. The male adult is blue, and its wings edged with black with

YOUR PC GURU

COMPUTING FOR 'MERE' MORTALS

01454 616365

- Home visits
- Computer Repair
- Phone & Tablet setup
- Home Wireless & Broadband
- Smart Home Tech
- Complete Mac support

www.yourpcguru.co.uk
Technology Advice & Repairs

JC 4x4 Ltd SPECIALIST IN LANDROVER

SERVICE • REPAIR WORK • DIAGNOSTICS • MOTS • OTHER VEHICLES WELCOME

CALL JAMES: 01454 261067 / 07966 086447



Free Quotes

Domestic	Radiant heating
Commercial	Boilers
Breakdowns/ call outs	Radiators
Servicing	Plumbing
Installations	
Warm air heating	LPG, natural gas, oil



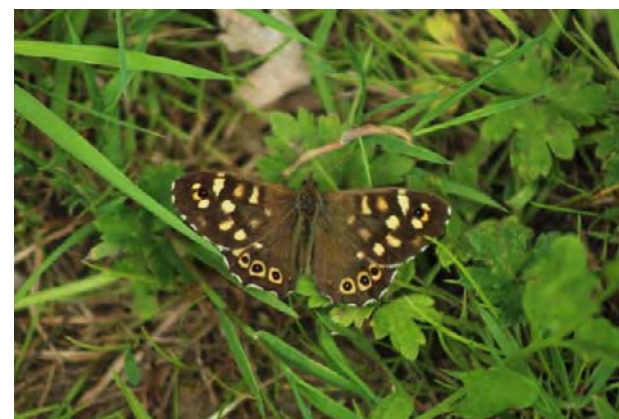
www.edgeheatingandplumbing.com info@edgeheatingandplumbing.com



clear white wing margins. The female shares the white wing margins, but colour is variable and can be brown with a hint of blue or blue with orange margins but both male and female share similar underwing colours.

Speckled wood

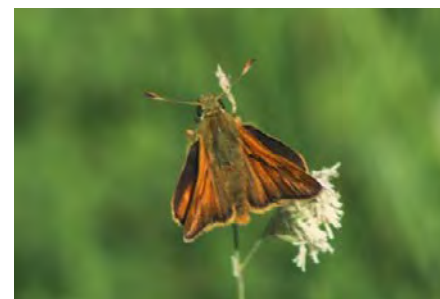
Currently very abundant in woodland glades, lanes, and hedgerows where there is dappled sunlight. This photograph taken in woodland near Old Down in June. It is one of the



butterflies most tolerant of shade. It belongs to the Nymphalidae family. Populations of this butterfly increase in cooler wet years and decrease when it has been dry. They mainly feed on aphid honeydew from leaves in woodland. The male is very territorial and can often be seen spiralling into the air

fending off rival males. The speckled wood can overwinter as a caterpillar or chrysalis that can give rise to broods in March up to October. The caterpillar can hibernate for six to eight months.

Large Skipper



The Large Skipper belongs to the Hesperidae family. Skippers are very often described as moth like. Most are small in size and their flight can be described as 'fast skipping' or 'buzzing'. This photograph was taken in a grass field in Vicarage Lane Olveston in June. They produce one brood in May and June. Populations peak in July but they will have gone by



Dave Webb

Painter - Decorator

07809 869149

01454 201640

*Reliable, professional, friendly service.
Please ask for your free quotation*



Squire Sweep

A chimney sweep service from
Michael Squire

Tel: 07504 253 467

Email: squiresweep@gmail.com

Visit: www.squiresweep.co.uk

MEDWAY DESIGNS Sewing & Alterations

- Bridal Wear •Alterations
- Evening Wear •Day Wear
- Soft Furnishings & re-upholstery

Ask about sewing lessons

Delivery & Collection Service Available

Lois Coulson
0117 969 1798 /
07950 396064

loiscoulson@ymail.com

14 Watch Elm Close, Bradley Stoke

Call now for a friendly personal service

Cookin' On Gas Ltd



Repairs & Sales of all
domestic appliances:



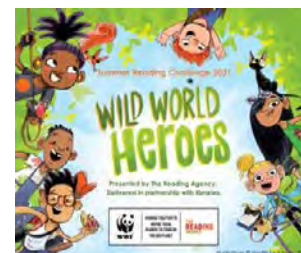
Gas & Electric Cookers and Hobs
Washing Machines, Dishwashers
Tumble Dryers

www.cookinongas.co.uk
enquires@cookinongas.co.uk

Matt Cole
1 Olive Gardens Tel 01454 851545
Alveston Mob 07715 705670

August. The female produces her eggs and lays them in grass fields and the eggs will hatch in approx. two weeks where the caterpillar stage will then last 10 months so will hibernate at this stage. The chrysalis is formed in late April early June and will last for 3 weeks until the adult is formed. The success of this can be very much affected through grass cutting when at the caterpillar stage.

So, these are but a few examples of butterflies you may see in the surrounding woods, fields, and gardens in our area. Others seen locally up to the time of writing have included Brimstone, Green Veined whites, Tortoise Shell, Painted Lady, Holly Blue, Peacock, Comma and Brown Argus. These will be joined by others as the summer months progress.



Thornbury Library News

Pack your bags, we're headed to the library to join *Wild World Heroes*, Summer Reading Challenge 2021! To get involved, children read 6 books over the summer holiday and collect stickers to complete their special *Wild World Heroes* poster to get a medal and certificate. It's fun and free to take part. Join the *Wild World Heroes* for the Summer Reading Challenge at a South Gloucestershire library from Saturday 10th July to Saturday 11th September, and discover how you can make a difference to the environment too.

Rhymetime returns to Thornbury Library on Fridays at 9.30am. This is a bookable event and numbers are extremely limited. Please email thornbury.library@southglos.go.uk and leave your name and phone number and we will call you to book you in.

If you have a newborn or baby aged 0 – 12 months you can pick up a Bookstart Baby Bag or Newborn Pack by visiting the library or ordering ahead using Click and Collect.



XL Plumbing & Heating Solutions Ltd

- General Plumbing
- Boiler Installation, Servicing & Maintenance
- Gas Safety Certificates
- Bathroom Installation & Tiling

Contact Mark Mob: 07738 726803
Email: xlplumbing@hotmail.co.uk
Tel: 01454 549008
Web: www.xlplumbing.co.uk



MEMORIALS &
MONUMENTS



Supplied & Erected
NEIL VIZARD
01454 419108

BAMFIELD
TREE SERVICES
TREE SURGERY AND LOGS



www.bamfieldtreeservices.co.uk
07761 810483

prestige
event equipment hire

Supplying you with the best equipment to succeed!
CELEBRATIONS & CORPORATE EVENTS

CUTLERY, CHINA, GLASSWARE, LINEN, REFRIGERATION,
COOKING EQUIPMENT, BARBEQUES, FURNITURE & MORE

Fast and Efficient, we stock a wide variety of
equipment covering anything from
WEDDINGS to FESTIVALS.

For a FREE quote please call: 01179613170
info@prestigecateringhire.co.uk
www.prestigecatering.co.uk

HK **Harkell**
Building services

- MAINTENANCE
- BRICKWORK
- ROOFING
- FENCING
- REPAIRS
- PLASTERING
- CARPENTRY
- PATIO ETC

FOR A FREE QUOTATION PLEASE CALL
TEL: 01454 617110 MOBILE: 0787 6682546

Window Cleaning

07976 694744 - 0117 9085794



M. Gray Window Cleaning

Family run business for over 25 years
experience working in the Almondsbury,
Olveston, Aust areas - and nearby.

Email: mgwc1@hotmail.com



Jam Jar Flower Festival

St. John's Church, Elberton

Saturday 3rd July 3pm – 5pm

- Prize for the best Jam Jar – entries from all ages welcome.
- Cream Teas

For more information contact: 01454 616725

Yours Faithfully.

Revd. Simon Edwards

Olveston and Tockington Methodist Church

I have not always had reliable cars, the first few I had were a bit dodgy. On one the throttle cable snapped in the middle of rush hour near Liverpool, on another the clutch blew on the M2, while one car had the whole engine replaced twice! I remember the feelings of helplessness, anger and frustration - I had been let down by my cars, they had failed me!

It isn't only cars though, sometimes we are failed by people, and our response can sometimes be to say, "I will never trust them again" or even, "I'm going to get my own back". We hear this too much on the news, don't we?

I always find myself amazed as I read the story of Jesus and Peter meeting after Jesus' resurrection. Peter had denied that he knew Jesus three times, despite telling Jesus that he never would. He had failed Jesus and now he is face to face with him, risen and alive, standing beside the sea of Galilee. I wonder if Peter thinks Jesus will want nothing to do with him, perhaps he thinks Jesus will enact some vengeance, and yet that isn't what happens. As they talk, Jesus asks Peter, "Do you love me?" He asks three times - once for each denial, and they find a way moving forward together. A way not based on vengeance and retribution, not based on apportioning blame and judgement, a way based on love and respect and hope.

Imagine what the world could be like if that were the starting point for us all – love not hate, hope not despair, forgiveness not retribution, peace not anger. Martin Luther King Jr. said, "Darkness cannot drive out darkness; only light can do that. Hate cannot drive out hate; only love can do that." I pray we might find our way to build that kind of world together.

greenside
Landscaping

The Cottage, Hortham Lane,
Almondsbury, Bristol BS32 4JP

Greenside Landscaping can offer a wide range of services including:

Artificial Grass ~ Brick & Block Driveways
Decking ~ Fencing & Gates
Garden Design ~ Patios & Paths
Planting ~ Ponds & Water Features
Turfing & Seeding ~ Walling

We pride ourselves on flexibility and we strive to meet our client's requirements and budgets.

www.greenside-landscaping.co.uk
Tel: 01454 250648 Mob: 07980 384321
Email: paulbradburn@hotmail.com

BEDLAM
www.bedlambeds.com

- Free local delivery
- Free assembly
- Free disposal of your bed

Divans / Mattresses / Ottoman & Wall beds /
Memory foam & latex mattresses / Beds made
to measure / Pine, Metal & leather beds

Open Tuesday to Friday: 9am-5pm
Saturday: 10am-3pm

Visit our showroom: The Old Post Office
26a Gloucester Road, Rudgeway, Bristol,
BS35 3RY (by the speed camera)

01454 617 277 or 07887 853479

MORAS
Decorating Services

ANDREW MORAS
Quality Painting and Decorating Services

For your **FREE** no obligation quote contact Andrew:

07962069036

✉ andrew@morasdecorating.co.uk
www.morasdecorating.co.uk

Music Lessons for All
Guitar, Piano, Keyboard or Recorder

Contact highly qualified, experienced teachers
Andy & Maxine Warn

Tel: 07916 253267
Email: max@crotchet-factory.co.uk

Thornbury Stairlifts
SALES SERVICING & REPAIRS



- New & Re-conditioned Stairlifts & Warranty
- Removals & Relocations
- Free Surveys & Quotes – No Obligation
- Rentals for Straight Stairs

Independent, Professional & Friendly Advice
Over 24 years practical experience

Independent Stairlift Specialist
01454 413748 07833 318722
www.thornburystairlifts.co.uk

Church News

ST MARY the VIRGIN, OLVESTON

July 4	9.30am	Holy Communion	Revs A Lloyd & D Bone
	6pm	Evensong	Rev David Moss
July 11	9.30am	Matins BCP	Rev Ann Lloyd
	6pm	Holy Communion	Rev David Moss
July 18	9.30am	Morning Prayer	P Harrod & J McBride
	6pm	Holy Communion BCP	Rev David Moss
July 25	9.30am	Holy Communion	Rev Ann Lloyd
	6pm	Evensong	Paul Harrod

NB. Also services every Wednesday at 10am.

Online services will continue at www.stmarysolveston.org.uk.

Also visit Revs Rural on YouTube, every week.

Contact: Rev David Moss, 01454 415190; email: mossds@gmail.com

CHAPELRY OF ST JOHN, AUST

July 11	10am	Morning Prayer	Trevor Cook
July 25	10am	Holy Communion	Rev David Moss

Contact: Trevor Cook, 01454 618442

Church Wardens: Jenn Dickens 632312 & Clive Roberts 632238

ST MARY DE MALMESBURY, LITTLETON-ON-SEVERN

July 11	9am	Morning Prayer	Mrs Tracey Black
July 25	9am	Holy Communion	Rev David Moss

Contacts: Tracey Black 417660 & Tim Pyper 416422 /07802 419451

ST JOHN THE EVANGELIST, ELBERTON

July 11	9am	Morning Prayer	Mrs Judith Heybyrne
July 25	9am	Holy Communion	Rev David Moss

Contacts: Judith Heybyrne 616725 and John Gunnery 413225

OLVESTON AND TOCKINGTON METHODIST CHURCH

July 4	10am	Tock Ch	Morning Worship led by Mrs Rosemary Shaw
July 11	10am	Olv Ch	Morning Worship with Holy Communion, led by Rev Simon Edwards
July 18	10am	Tock Ch	Morning Worship led by Mr John Creech
July 25	10am	Olv Ch	Morning Worship led by Mrs Rosalie Doyle

Contact: Rev Simon Edwards 418176
email: simon.edwards@methodist.org.uk

THE VINE HOUSE OF PRAYER, Pilning Street, Awkley BS35 4HL

Contact: Mike and Barbara Matthews, tel. 07512 917229 or email: thevine_awkley@hotmail.com

THE OASIS CHURCH, Old Down

Contacts: Jenny Parfitt jennyparfitt@ymail.com & Sue Tett stett56@hotmail.co.uk

AUST EVANGELICAL and LITTLETON EVANGELICAL CHURCHES

Contact: Danny Bamfield 01454 419324 email danny@thebamfields.co.uk

RC CHURCH OF CHRIST THE KING, Thornbury

Mass on Sundays at 9.30 and 10.30am

Contact: 01454 412223, www.ctk-thornbury.org.uk

SOCIETY OF FRIENDS (QUAKERS), Thornbury

Contact: Brian Hawkins, hawkinsb863@gmail.com 01454 854867

HOLIDAY LET 6 BERTH HOLIDAY HOME

(2 Bed, 1 Ensuite)



OTTERTON . BUDLEIGH SALTERTON . EX9 7BX



Central Heating . Double-Glazed
Private Beach . Fishing Trips . Cliff Walks
Restaurant . Bar . Live Entertainment
Indoor Pool . Kids Club
Shop . Cafe . Takeaway



Tony Gardner
07889 727 729

From the Registers of St Mary's

June 8th Funeral Service for Robin Bush, formerly of Tockington.

July Events

Saturday 3rd Thornbury Carnival, Mundy Playing Field.

Saturday 3rd Elberton Church Jam Jar Flower Festival with cream teas. 3pm -5pm.

Sunday 4th Almondsbury Gymkhana, Washingpool, Tockington.

Saturday 24th Thornbury Art Exhibition, Methodist Church (ends Aug.1st)

Saturday 31st Aust Village Fete.



Picture taken at a previous Gymkhana

Contact details for any clubs or organisations in the Meeting Point area can be found in the Meeting Point Directory on the community website: www.olvostonandaust.com. If you would like to update your organisation's details, please email: meetingpointsecretary@olvostonandaust.com

Advertisements Neither Meeting Point, its editor, nor management committee accept any responsibility or give any guarantee in case of any dispute or claim as to quality, condition or delivery of commodities or services advertised in this magazine. It is not to be taken that publication implies recommendation. It is always advisable to check prices when ordering goods or services.

Views expressed by contributors are not necessarily those of the editor or Meeting Point magazine.

Copyright Meeting Point 2021. Copyright remains with the author(s) and Meeting Point. No part of this publication may be reproduced or transmitted in any form without the prior permission of the copyright owners.

Meeting Point is printed by Motion Printing Ltd.

- All makes servicing and repairs
- Petrol and Diesel MOT Testing
- Tyres, Exhausts and Batteries
- Air Conditioning
- Latest Bosch On-Board Diagnostics
- Vehicle Sales



New Road, Olveston, BS35 4DX

01454 202030



Dunkley's

Chartered Accountants
30 YEAR ANNIVERSARY

**HERE TO HELP
YOUR BUSINESS
REACH ITS FULL
POTENTIAL**

TALK TO US ABOUT HOW WE CAN
SUPPORT YOUR BUSINESS MOVING FORWARD

T: 01454 619900 E: ADVICE@DUNKLEYS.ACCOUNTANTS

WOODLANDS GRANGE, WOODLANDS LANE, BRADLEY STOKE, BS32 4JY