

Meeting Point



February 2023

TRUE BLUE TAXIS
(OLVESTON)

Local Taxi Company



Honest, Reliable and Safe

Cash or Card Payments



Mobile:

07967 042794

Top-to-Tail Housekeeping

- Professional
- Dependable
- Comprehensive service

**Trading
Standards
Accredited**

**Felina
Contract Cleaning**

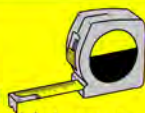
01454 201562
07790 050187
cleaning@felina.biz
www.felina.biz



Local Carpentry, Building & Plumbing

No Job Too Small

- Painting & Decorating
- Maintenance & Repairs
- Kitchen/Bathroom Fitting
- Static Home Repair & Refurbishments
- Handyman Service



For More Info Visit:

alvestonbuilders.co.uk

**Over 40 Years
of Experience** ✓ **Card Payments
Taken** ✓

Contact Mike

Tel: 01454 614887
Mobile: 07932 153300/07711 411075
Email: enquire@alvestonbuilders.co.uk

THORNBURY
Chiropractic
CLINIC

www.thornburychiropractic.co.uk

The Georgian House, 6 The Plain

Chiropractic

Johnatan Williams Msc DC

Carol Williams MSc DC

Acupuncture

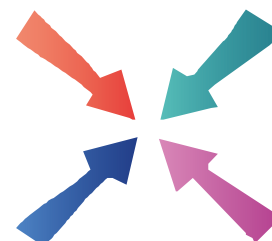
David Sanders Lic Ac. M.B. Ac.C

Massage

Josie Cole MTI

*Open weekdays 8.30am-7pm
and Saturday mornings*

01454 418259



Meeting Point

Volume 47, Number 5, February 2023

The community magazine for the villages of Olveston,
Tockington, Old Down, Lower Hazel, Awkley, Ingst, Aust, Elberton and Littleton upon Severn

EDITOR:

Marelin Orr-Ewing
Courtlands
Olveston
Bristol BS35 4DU
Tel: 01454 610081
[meetingpointeditor@
gmail.com](mailto:meetingpointeditor@gmail.com)

ASSISTANT EDITOR:

Angela Williams
Ashlea
Haw Lane
Olveston
Bristol BS35 4EG
Tel 01454 612850
[meetingpointmagazine@
gmail.com](mailto:meetingpointmagazine@gmail.com)

ADVERTISING:

Bernard Amos
Tel: 01454 620388
[meetingpointadvertising@
gmail.com](mailto:meetingpointadvertising@gmail.com)

Publication date
1st of each month

Material for March 2023
to the Editor or Deputy Editor
by 6th February 2023

From the Editor

I love this month's cover photograph of snowdrops, and, at the time of writing (a full two weeks before the magazine is delivered) snowdrops can already be seen in many places around our villages. Rock House in Elberton, which has a magnificent showing of snowdrops, will be open through the National Garden Scheme on February 5th. Definitely worth a visit.

This month we have got details about a very special film, featuring the long lives of two local residents, which will be shown in St. Mary's, Olveston. There is a final reminder about the Parish Players' production of Kiss Me Kate, which will be running during the half-term week. And, I am pleased to see, the return of the Parish Hall Fish and Quiz.

This month's cover is by Lisa Helyer

Meeting Point Founded in 1976 by the Anglican and Methodist churches in Olveston, near Bristol.

**Meeting Point magazine and Meeting Point Directory are online at the
Community Website: www.olvestonandaust.com**

Thornbury Motors

- New and Used car sales
- Servicing, repairs and MOTs on all makes



thornburymotors.co.uk 01454 412535



Grovesend Road
Thornbury
Bristol
BS35 2EF



SAVAGE ASSOCIATES

Accountants·Business Advisors
Corporate & Personal Tax Consultants

The Coach House, Aust Road
Olveston, Bristol BS35 4DE
Tel 01454 610388 Fax 01454 201541

for an initial consultation please contact:
edd.savage@savageassociates.co.uk

Vicarage Farm Holistic Therapy Centre

Bringing balance back
into your life.
Offering a wide range of
Holistic Treatments.



Hypnotherapy

A safe and effective treatment: to
remove stress, anxiety, depression
and phobias. Allowing positive and
powerful changes in your life.

Tel 01454 614390
www.vicaragefarm.org

Eric and Jean - The Movie!

Martin Gibson

The exclusive preview of this brand-new film, produced and directed by local film maker Steve Humphries, will be screened on February 15th at St Mary's Church, Olveston, starting at 7.30pm. Doors open at 7pm and there is a licensed bar, tea and coffee. Admission is free, though donations are always welcome and everyone is welcome.

Fall in love with our beautiful parish all over again when you see it through the eyes of history, told in this incredible new film. Using original footage, shot by Steve, and featuring heart-warming, 'warts and all' interviews with much loved and respected figures in the local community, Eric Garrett and Jean Panes.

Eric Garrett, aged 93, has spent years carefully recording and preserving every aspect of the history of the parish and his beloved Olveston, but this time the spotlight is on him. Hear how after losing his father to malaria, contracted during his military service, a heartbroken nine-year-old Eric helped feed his family who were in dire straits. 98 year old Jean Panes, who still lives independently in the village, recalls how her family had to adjust to a different life when her father returned from the First World War, suffering from shell shock - what we would now recognise as PTSD.



Eric aged seven

From innocent country childhoods to the shocking hardships of two world wars, this film follows their stories with happy memories of love and romance, sad times of struggle and loss, all set to the beautiful backdrop of our parish. The film uses many extraordinary photographs from Eric's collection, as well as period archive film, new face to face interviews and drone shots, in which we see the village and its landmark buildings from above for the first time.

Steve Humphries has made many award-winning films for the BBC, ITV, Channel 4 and the Discovery and National Geographic networks through his independent company Testimony Films. *"I've really enjoyed making this film. I wanted to honour the lives of Eric and Jean who are both much loved and respected figures in the local community and who both have fascinating personal stories."*

D. YOUNG
GARDEN SERVICES
Fully Qualified with over 16 years Experience
Grass Cutting Hedge Cutting Turfing Fencing
General Landscaping

Tel: 01454 416206 Mob: 07545 131488
Email: d.younggardenservices@hotmail.com

MD Aerials
Call Michael Dagger
T: 01454 418 341 M: 07817 304 236

Freeview – Freesat – Sky – DAB Aerials

Wall mounting LCD & Plasma
televisions setting up & tuning

mike@mdaerials.co.uk
www.mdaerials.co.uk

T. EDWARDS PLANT
Digger and Driver Hire

- Site/garden clearance
- Footings
- Drainage/soakaways
- Driveway preparation
- Stump removal
- Fencing & turfing
- Narrow access equipment

Price or day work t: 07900 372349
t.edwardsplant@gmail.com
CPCS/CITB qualified & insured

Divine
Bathrooms & Wet Rooms

07584 666154

Email: info@divinebathrooms.co.uk
Web: divinebathrooms.co.uk

S.J FARR
KITCHEN FITTING
SERVICES

Mobile: 07915673649

Our Associated Services Include:

- Plumbing
- Wall & Floor Tiling
- Decorating
- Plastering

City & Guilds Qualified

Geoff Gulliver
Carpentry & Joinery, Littleton
ALSO
UPVC Doors, Windows and
Conservatories. For a very
competitive **FREE** estimate

Ring (01454) 414947

Steve - also an established author - has written a book, 'For the Love of Olveston', to accompany the film. It tells the broader history of the parish through the memories of Eric, Jean and several other 'ninety somethings' including Ted Addis, and is illustrated with over a hundred photographs from Eric's private collection. You will be able to flick through the preview copy at the viewing, when orders can be placed.



Jean, aged seven, with her father

Olveston and Tockington W.I.

At our Christmas party we had a great sing-a-long of Christmas songs as part of the musical entertainment provided by Bristol Fingers and Frets Orchestra. The buffet was splendid, with a variety of goodies and not one mince pie in sight!

After a talk in January from Phil Savage about his trip to the Antarctic, we are looking forward to a hint of spring with a visit to Painswick to see the snowdrops. Peter Bruce will be telling us about hat making in Winterbourne at our meeting in February.

Olveston and Tockington WI meet on the second Tuesday of the month at 7.30pm at Olveston Parish Hall. Please contact Angela Green on 01454 615222 if you would like to know more about OTWI.

Phoenix Flooring Limited 

DISABLED ACCESS

Finance Available
Buy now, pay monthly
Provided by **iDeal Finance**

RESIDENTIAL & COMMERCIAL FLOORING SPECIALISTS

Carpets • Luxury Vinyl Tiles • Laminates
Engineered Wood • Room Size Remnants
Vinyls • Artificial Grass

CASH & CARRY **OPEN TO THE PUBLIC AND TRADE**

Tel: 01454 620707
email: enquiries@phoenixflooringltd.co.uk
www.phoenixflooringltd.co.uk

 **Unit 15 Hemingway Business Centre**
Walker Way, Thornbury, Bristol, BS35 3US

Kiss Me, Kate

Kiss Me, Kate

Weds 15 –
Sat 18 February 2023
7.30pm
Parish Hall, Tockington

Tickets on sale
01454-202011



Looking for something to brighten your dark winter evenings? Tickets for the Parish Players production of Kiss Me, Kate have been selling fast, but some may still be available.

The show takes place at the Parish Hall, Tockington BS32 4LQ, at 7.30pm on Wednesday 15th to Saturday 18th February (half term week).

Tickets are £10 for adults, £7 for children and £12 for premium seats. To buy your tickets, please call the Box Office on 01454 202011.

For up-to-date information (but not ticket sales), see:
www.facebook.com/OlvestonParishPlayers.

We're really looking forward to bringing you a show week of light, colour and joy.



Pamela MacLeod
HOLISTIC THERAPIES
REFLEXOLOGY • MASSAGE • AROMATHERAPY

Member of Federation
of Holistic Therapists

07765804144

****Introductory Offer****
£10 off any 60 min treatment

FULL BODY MASSAGE	60 MINS	£45
*AROMATHERAPY MASSAGE	60 MINS	£48
BACK, SHOULDER & NECK MASSAGE	30 MINS	£25
REFLEXOLOGY	60 MINS	£45

Please allow at least 15 minutes for Consultation

**A blend of pure essential oils will be tailored to address each individual's needs.*



2 Men Went To Mow

All Aspects of Garden Maintenance, Plants & Shrubs Supplied, Garden Rubbish Removal, Fully Insured

Garden and Tree Service Tel: 07956 311901
Local, Friendly and Reliable Email kev@2menwenttomow.co.uk

Tree Surgery (NPTC Qualified)
All Types of Tree Work Undertaken
Contract Grass Cutting
Beds & Borders Maintained
Pruning and Hedge Cutting
Planting

FREE ESTIMATES!



L. & J. Gulwell
Family Funeral Directors

1 Quaker Lane,
Thornbury
BS35 2AD

Local independent family funeral directors for over 50 years
Specialists in bespoke funeral services, burials, cremations & pre-paid funeral plans

Call 24hrs 01454 418 779 • www.funerals.uk.net



COMPANION AND DRIVING SERVICE

Driving Miss Daisy
We're There For You

Now taking bookings in your area!

- For people of all ages unable to drive but wish to remain independent
- Supported trips to the doctor, hospital, shops, bank, hairdresser, vet, etc.
- Social outings, holidays, help at home and much, much more
- DBS checked and First-Aid trained
- Dementia friendly
- Wheelchair Accessible Vehicle
- Fully Licensed

To book your Daisy
07951 079 558 / 0333 014 6211
northbristol@drivingmissdaisy.co.uk
www.drivingmissdaisy.co.uk

Top quality Nursing and Residential Care



Beech House

Beech House Care Home provides excellence in all aspects of care for all our residents, offering the best in nursing care for the elderly and residential care for people with a diagnosis of dementia.

Our unique care service includes:

- beautiful gardens
- purpose built homes with 24/7 air circulation
- spacious rooms and wide corridors
- top quality chefs
- television with DVD and telephone in each room
- wheelchair provision at no additional cost
- high technology baths and walk-in showers
- regular minibus trips
- programme of interesting and stimulating activities







To arrange a visit, telephone **01454 412266**
For more information see www.bristolcarehomes.co.uk

Bristol Care Homes
providing a unique care service

Green Force

Did you know..... there is a 'Carbon Cycle'?



Carbon as carbon dioxide is talked about relentlessly in connection with climate change. We humans create the gas through burning fossil fuels and wasting food. We do this in a linear fashion with waste as the end product. But nature copes with carbon in a circular way so there is no waste. This is called the carbon cycle. Last October, Green Force demonstrated how to find out your personal carbon footprint by using an on-line App

The Carbon Cycle is the process where carbon compounds are interchanged in the oceans and around the atmosphere of the earth.

These are the Carbon Cycle Steps

1. Carbon present in the atmosphere is absorbed by plants for photosynthesis which is how plants make their energy.
2. These plants are then consumed by animals which breathe out CO₂ back into the atmosphere.
3. These animals and plants eventually die and decompose releasing carbon into the atmosphere
4. Some of the carbon that is not released back into the atmosphere eventually becomes fossil fuels and limestone.
5. These are then used for man-made activities, which pump more carbon back into the atmosphere.

The importance of the Carbon Cycle

Even though carbon dioxide is found in the atmosphere, it plays a vital role in balancing the energy and traps the long-wave radiations from the sun, acting like a blanket over the planet. If the carbon cycle is disturbed it will result in serious consequences such as climatic changes and global warming. Carbon is an integral component of every life form on earth from proteins and fats and even to our DNA. All known life on earth is based on carbon. The carbon cycle, along with the nitrogen and oxygen cycles, play a vital role in the existence of life on earth. The oceans have a carbon cycle too. They absorb more carbon than they give out, so the seas form a 'carbon sink'. Marine animals convert carbon to calcium carbonate, and this forms the raw building material required to create hard shells, like the ones found in clams and oysters.

We humans should try and reduce any sort of waste whenever possible.

www.olvestonpreschool.co.uk/pilning-site

Pilning Pre-School

NOW OPEN!

Offering amazing childcare to children aged 2-5 at the heart of our local community.

Pilning Village Hall
Open 9:00am - 3:00pm
Tel: 01454612074

Find us on Facebook

News from St Mary's

Debbie Harries



The journey to Easter 2023 begins on Ash Wednesday, 22nd February, with a Benefice Holy Communion at St Mary's Olveston at 10am.

For many people Lent is a time of fasting, choosing to go without. Today too many people are 'going without' not by choice but by circumstances. This year we are remembering the cry of Isaiah: '*Is not this the fast that I choose: to lose the bonds of injustice?*' So, we are invited to reflect on the injustices of the world and ask what God is calling us to do about them.

To do so we will use the booklet *Embracing Justice*. There will be groups to look at this together; some meeting during daytime and some in the evening. The booklet and details of these groups will be available shortly.

Thank You for the Windows

Thank you to all who designed and lit up an advent window, they were beautiful and much appreciated throughout December. If anyone wants to do one this year, please let me know, it is never too early to start planning. Contact Debbie at: oboe-debbie@live.co.uk



Olveston Parish Hall Annual Fish and Quiz

The 2023 Annual Quiz will be held on Friday 24th February. Doors open at 7.00 for a prompt 7.30 start. The ticket price is £11 to include a Fish and Chips supper followed by a mini ice-cream. Payment can be made at the door, and we now have a card machine. Please note - teams of four people maximum.

We will hold a raffle with all proceeds going to a chosen charity, which we will announce on the evening. There will be a cash/card bar. To reserve a place please contact: patsavage1948@icloud.com

 **PawsPetCare**
...simply for the love of animals

Providing care for your pets
when you need it

Contact Helen for a friendly and reliable service
07493 153520 or enquiries@pawspetcare.com
www.pawspetcare.com

Frontline Martial Arts

Traditional Martial Arts / Taekwondo

Mighty Mites (under 10's): Fridays 4.30-5.15pm at
Juniors (ages 10-13): Mondays 7.15-8.15pm
Adults/over 13's: Mondays 8.15-9.45pm
at Alveston Youth Centre



Tel: 07771 692222
www.frontline-ma.co.uk

SEVERN SIDE TAXIS

SIX SEAT COMFORT
AIR CONDITIONED CAR

AIRPORTS
BUS STATIONS



HOSPITALS
EVENINGS OUT

RING STEVE WARD
07879 601011

THE WHITE HART INN Olveston



Traditional 17th Century English Pub

Catering for Parties and Functions
Wide variety of cask & keg beers
Skittle alley & pool table available
Book now for Skittle Matches
Award winning courtyard garden

Telephone: 01454 612175

FRANCIS

DESIGN & BUILD

Carpentry & Building Services

For all aspects of carpentry

Doors, Skirting, Kitchens, Fencing,
Decking, Stairs, Timber frame etc.

Call Craig on 07970 514409
(or, if busy)

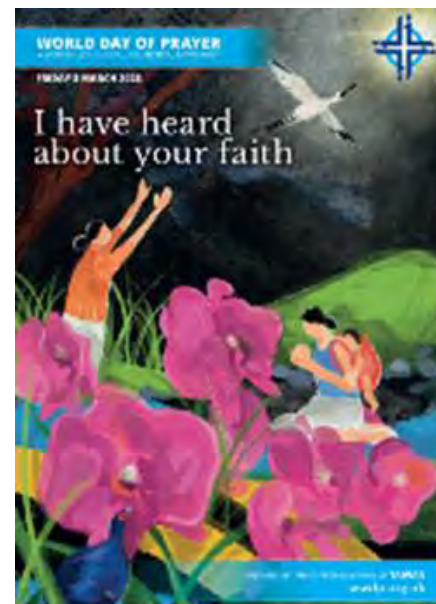
email: craigyoung0308@live.co.uk

World Day of Prayer

Jo Baxter

This year's World Day of Prayer falls on Friday 3rd March, so please save the date in your diaries.

I Have Heard About Your Faith



Johanna@baxterfamily.uk
FFI: www.wwdp.org.uk

This Global Day of Prayer is for anyone who wishes to spend an hour of their day wishing to join with the people of Taiwan, to give thanks for their beautiful island, their people and to encourage one another in our faith just as Apostle Paul did in his letters.

This is a women-led, global and ecumenical movement which is open to all!

The 10am service is yet to have a home (look out for posters, info in your church newsletter or next month's Meeting Point) but if you would like to take part, offer a lift to someone you know normally attends, spread the word that this is happening then, please contact:

If you can't make the service but would like a booklet at home on the day, do please get in touch at the above email address or mobile 07773 709155.

Other local services are: 7pm service at St Helen's, Alveston at All Saints Compton Greenfield at 7:30pm.

From the Registers of Olveston and Tockington Methodist Church

Monday 28th November at Tockington Church
Service of Thanksgiving for the life of Caroline Winifred Lewtas

Severnside Heating & Plumbing



- Installations
- Servicing
- Repairs

Working locally since 2003. An experienced heating and plumbing engineer. For a no obligation quote please call Mike
Mob: 07554 825813 Tel: 01454 613780



LA Electrical Services YOUR LOCAL ELECTRICIANS

New Builds, Rewires, Consumer Units, EV Charge Points, Landlord Reports (EICR), Testing & Inspection, Sockets, Lighting, CCTV, Security, Solar and Battery Storage & much more

f t i /laelectrical

01454 633 336

LAELECTRICAL.COM

Dave Webb

Painter - Decorator

07809 869149

01454 201640

*Reliable, professional, friendly service.
Please ask for your free quotation*



Baby and Toddler Music!



Have fun and enjoy music with your child

Meet others and share music as well as a cuppa and maybe cake
Suitable for ages from 0-4 with a supporting adult of any age

10:30am Wednesdays in Severn
Beach Village Hall

£2-5 for an hour session dependent on numbers

FFI Contact Janet Harrison janet_harrison@outlook.com or 07562 212435 or turn up to a session



Squire Sweep

A chimney sweep service from
Michael Squire

Tel: 07504 253 467

Email: squiresweep@gmail.com

Visit: www.squiresweep.co.uk

Thornbury Rotary Swimarathon



Thornbury Rotary Club is pleased to announce that the annual Thornbury Swimarathon is returning again in March. This very popular community event has, over the years, generated funds to support many local and national charities and charitable initiatives.

The event will take place on Friday March 3rd and Saturday March 4th. The principal beneficiaries this time are the charities South Gloucestershire Young Carers (www.carerssupportcentre.org.uk/young-carers) and Paul's Place South West (www.paulsplace.org.uk), an organisation that helps enhance the lives of adults who are physically disabled. Rotary President Stuart Hill has expressed his delight that the Swimarathon continues to be popular amongst sponsors, both private and corporate, and all those who take part.

This fun event is free to enter and is open to all ages, as long as swimmers can manage the length of the pool. The swimming is carried out in relay style, with a team of up to 6 people taking it in turns to swim a length. Please contact organiser Bernard Amos to enter a team, via email, RotarySwimarathon@icloud.com or mobile 07443 971716.

Adult teams have been reducing over the years, so Bernard is very keen to hear from people who might be able to represent different sports clubs, companies, charities, other organisations and groups. There is an opportunity for charitable organisations taking part to benefit by receiving back a sizeable percentage of the money raised by their teams. Bernard would also like to hear from more schools, cubs, brownies, youth groups and so on.

Thornbury Rotary's website is undergoing some changes, but information about the Swimarathon and other Rotary activities is still available to view via www.ThornburyRotary.org. Sponsors can make pledges and payments with swimmers' sponsorship forms or by donating directly through the JustGiving page: www.justgiving.com/campaign/thornburyswim23.

This year's event is supported by Thornbury Radio through which there will be regular updates



For Detailed Aerial Photos of Homes,
Rooftop Inspections & Orthomosaics
call Neil on 07986 162088



motion
motiondesignsprint

Do you know we print the Meeting Point Magazine?

We also print for lots of local clubs, events and businesses.

Based in Severn Beach we offer convenient off-road parking right outside our door!

We print everything from Wedding Stationery to Business Stationery

Our professional design and modern printing techniques have saved time and money for lots of people.

Fast, efficient and professional.

Why not let us print for you?

01454 631289
info@motionprinting.co.uk
www.motionprinting.co.uk

ALMONDSBURY PHYSIOTHERAPY AND SPORTS INJURY CLINIC

Louise Brinson
Chartered Physiotherapist, hpc reg

Almondsbury Surgery, Sundays Hill
Almondsbury, BS32 4DS

Tel: 07786915442
Fax: 014540615745
E-mail: physiolouise@hotmail.co.uk

Also at Aztec Spa Leisure Club

ACE1
Window & Gutter Cleaning

Window Cleaning
Gutter Cleaning & Repair
Fascia & Soffit Cleaning
Conservatory Roof
Solar Panel Cleaning
Power Washing

**M: 07590 201264
T: 01454 436162**

 Gleaming Insurance

Olveston and Tockington
Parish Hall
07780 515317

A great venue for :

- Fitness
- Parties
- Public events
- Music & Dance

Check availability & book online at www.olvostonparishhall.co.uk

"Our newly decorated Hall"





A Feghoot for February

Tony Turnbull

In response to last month's article about 'Feghoots', I'm afraid I cannot offer an original one. However, the reference to My Word on Radio 4 does bring to mind one that I remember. I'm sure it was Frank Muir who recounted it as I recall his lisp, and the phrase he was given was *A rose-red city, half as old as time*, which are the last two lines from quite a famous poem titled 'Petra'. Frank told the story in his usual round-about way, which I can't reproduce in its full glory, but the gist of it was as follows:

A young man called Arthur left school and started working at a garden centre. He wasn't the brightest of employees and, unfortunately, he didn't know an awful lot about plants. He made a lot of mistakes and the manager ended up keeping a record of them, since he knew that one day Arthur would have to go. The final entry, before Arthur was sacked, was:

A rose - "Red Settee" - Arthur sold as Thyme.

Severn Vale Flower Club - Flower Arranging Classes

Here is an opportunity to attend some basic flower arranging classes suitable for beginners and improvers alike, covering posies, triangles, table arrangements, parallels and foamless designs. These classes are also suitable for anyone contemplating helping out with church flowers.



Cost about £25-£30 depending on number of participants:

Monday 6th/20th March & April 3rd 2023
(further dates tba) 2pm – 4pm

St Mary's Hall, Eastbury Close, Thornbury, BS35 1DR

If you are interested contact Brenda on b.cook@tinyworld.co.uk or Sally on ssjttaylor@hotmail.co.uk

XL Plumbing & Heating Solutions Ltd



- General Plumbing
- Boiler Installation, Servicing & Maintenance
- Gas Safety Certificates
- Bathroom Installation & Tiling

Contact Mark Mob: 07738 726803
Email: xlplumbing@hotmail.co.uk
Tel: 01454 549008
Web: www.xlplumbing.co.uk



Bristol Carriage Masters

- Religious or non-religious funerals
- Bespoke funerals for burial or cremation
- Fully guaranteed pre-paid funeral plans
- Direct cremations



177 Crow Lane, Henbury, Bristol, BS10 7DR
Telephone: 0117 950 8066
Website: www.bcm-funerals.co.uk
Email: admin@bcm-funerals.co.uk

Windmillcare Homes

— great places to Live



Windmill House

The original, elegant home in a delightful rural setting with 2 acres of beautiful gardens delivering unrivalled care

01454 413818



OSBOURNE COURT

Our brand new purpose-built home providing exceptional specialist dementia care in the heart of the village of Stoke Gifford

0117 944 8700

**Residential, Short-term Respite
and Day Care available**

enquiries@windmillcare.com

or www.windmillcare.com

TOCKINGTON OSTEOPATHY

HELPING YOU BACK TO HEALTH

Effective Treatment of:

- Back and Neck Pain
- Arthritic and Rheumatoid Pain
- Joint Pain and Injuries
- Sciatica and Trapped Nerves
- Tendonitis and Muscle Injuries
- Tension Headaches

Please call on **07870 219249** or visit our website www.tockingtonosteopathy.co.uk to make an appointment or discuss how we can help.

Run by Natalie Gladstone - over 20 years' experience.

Easy parking on site - all major health insurances covered.

Old Down Hill, Tockington, BS32 4PA.

Friends of St. Mary's

The prize winners in the January draw, held on 5th January 2023, were:

Amount	Number	Name
£150	567	Mrs M Shurmer, Olveston
£75	247	Ms M Dale, Olveston
£50	629	Mr & Mrs J Poulton,
£25	361	Olveston Mr & Mrs T Roper,
£25	261	Fern Hill Mrs A Knight,
£25	652	Olveston
£20	242	Mr B Bradley, Olveston
£20	580	Mr J Mason, Tockington
£20	363	Mr P Haworth, Olveston Mrs
£20	484	J Hahn, Olveston
		Mrs R Arkell, Olveston

If you are not yet a member and wish to join the lottery, please telephone Andy Phillips on 01454 614890 or email andisp28@hotmail.co.uk.

Don't forget, if you're not in – you can't win!

Old Down Cricket Club

Tony Gardner

150 Club Winners January 2023:

- £50 Tony Gardner
- £15 Tracey Jarvis
- £5 Audrey Evans

Latest £25 Bonus Ball Winners:

- 17/12/22 John Peplow
- 24/12/22 Andrew Kitchen
- 31/12/22 Andrew Kitchen
- 07/01/23 Reg Purchase

Shirley Ann Hairdressing Salon

After many years of working locally, this hairdressing salon is now officially closed. Both Shirley and Sam would like to thank all customers for their very loyal support over the last 28 years. We wish you a very happy and healthy 2023.

Tel: 01454 885766
Mob: 07724 166917

Ridge

Roofing and Property Maintenance

Roofing ❖ Chimney Repairs ❖ Lead Work
Guttering ❖ External Painting
General Maintenance ❖ **FREE Estimates**



D-CR

DOMESTIC APPLIANCES



DOMESTIC APPLIANCE REPAIR SPECIALIST

- WASHING MACHINE
- TUMBLE DRYER
- DISHWASHER

- FRIDGE FREEZER
- COOKER
- HOB OR HOOD

Fast, friendly and efficient service
Sales - Service - Repair

Tel: 01454 850522 - Mobile: 07917441539
Email: d-cr@live.co.uk - Web: www.d-crdomesticappliances.co.uk

EARTHWORKSUK

We offer a range of recycled and quarried products including 6F5, type 1, topsoil and decorative stone. These can be delivered straight to you on site or collected from us at our yard in Grombail. Check out all we can offer you on our website or contact us using the details below.

Skip Hire

Top Soil

Recycled Aggregates

Grab Lorry Hire

Tipper Hire

info@earthworksuk.co.uk www.earthworksuk.co.uk
Orders Line: 07782472727
Bristol: 01179 828265 - South Glos: 01454 501037




Lending with Heart and Mind

South Gloucestershire Council fund a not-for-profit loan scheme for homeowners and landlords*.

We understand the expense of maintaining your home and we work with you to take the stress out of funding repairs, improvements or adaptations.

We see you as an individual, not a credit score. Our knowledgeable team of advisers will guide you through the process of applying for a home improvement loan.

For a no-obligation assessment or more information visit
www.lendology.org.uk or call 01823 461099

Heatherton Park Studios, Bradford on Tone, Taunton, TA4 1EU

*subject to eligibility

The Thrush Family

Paul Godwin

I had always thought that in the United Kingdom there were only two types of thrushes - the song thrush and the mistle thrush. However, I recently found out that I was wrong! The genus or Latin name for thrush is 'Turdus'. The term 'true thrush' is then used for birds within that family group (Turdidae). In the United Kingdom it is possible to see six types of thrush: blackbird (Turdus merula), fieldfare (Turdus pilaris), redwing (Turdos ilacus), song thrush (Turdus philomelos), mistle thrush ((Turdus viscivorus) and the ring ouzel (Turdus torquatus). Now I have found this out, it does seem quite obvious when you look at the characteristics of those birds.

Five of these thrushes we can see in wintertime, including in our gardens when the weather turns cold. This is especially the case if you have berries, apples and fallen leaves in your gardens. The exception is the ring ouzel which is a summer migrant and favours uplands and remote areas such as moorland or mountain areas. We are unlikely to see it locally.

Blackbird

The blackbird is a bird which we are all familiar with. It is a resident breeding bird which is primarily ground feeding on worms and insects, but also eats berries and fruit from trees especially in winter. It is often seen rummaging around in fallen leaves in winter trying to find insects to eat. In summer the male bird can be heard singing a rich and varied song often at dusk. It is estimated that 4.9 million pairs nest in the UK, but outside of the breeding season this number can treble with birds migrating to the UK from Northern Europe. This being one of the reasons why we see more blackbirds in gardens in wintertime. The sexes are dissimilar, and the RSPB website has interesting information on juvenile and adult bird recognition if you are interested. It is worth reading as female and juvenile blackbirds can be confused with other thrushes.

Fieldfare

The fieldfare is a 'winter thrush' and only an extremely small number breed in this country. We may see them between October and March. It migrates from Scandinavia and Russia, around 700,000 to the UK each year. In a mild winter most will stay out in the fields, mainly around trees and hedges where berries or fruit may be found. They can frequently be seen in mixed flocks with redwings sometimes in large numbers. In the December cold snap, in an orchard near Oldbury on Severn, I saw a mixed flock of what was probably in excess of one hundred birds. Key characteristics are its blue/grey head, in flight you will note its white under wing and pale grey rump. Its breast and flanks are orange/yellow and heavily spotted. Its call is a rapid *chack-chack-*

LINELA

embroid | print | promote

One place for everything promotional.
Specialising in embroidery,
printing and branded gifts



T Shirt Printing
Sports wear
Work wear
School wear
Promotional Products

Call us: 01454 615300

Email us: sales@linela.co.uk

www.linela.co.uk

BonneFreshClean

Carpet & Upholstery Cleaning Specialists

Love the look and smell of
clean and fresh carpets and
upholstery?

Bonne Fresh Clean brings to
you a professional carpet and
upholstery service that will
leave them sparkling and fresh.

Call for a free
no obligation
quote today!

- Thorough, gentle deep cleaning, no residues
- Child and pet friendly treatments
- Latest industry approved qualification and full insurance



Bonne Fresh - Relax and enjoy beautifully clean
and fresh carpets and upholstery!

T: 01454 436001 M: 07774 908410

W: www.bonnefreshclean.co.uk

44 Townsend Lane, Almondsbury, Bristol, BS32 4EQ



Livewire Electricals
Electrical & Mechanical Solutions



Domestic, Commercial
and Industrial Installations

All electrics for new build, extensions and
alterations to satisfy mandatory Building
Regulations. Landlords safety inspections
Portable Appliance Testing (PAT)

Electrical and electronic service and repair

For 24 hour call-out service available please

call Peter Jones: Tel: 07880 858785

Email: pete.livewire@blueyonder.co.uk

Local number Tel: 01454 613482

Visit our web site at

livewire-electrics.co.uk

Cookin' On Gas Ltd



Repairs & Sales of all
domestic appliances:

Gas & Electric Cookers and Hobs
Washing Machines, Dishwashers
Tumble Dryers

www.cookinongas.co.uk
enquires@cookinongasltd.co.uk

Matt Cole
1 Olive Gardens
Alveston
Tel 01454 851545
Mob 07715 705670

chack and the sexes are similar. The photograph below was taken in our back garden (Olveston) during the cold snap in December 2022.



Whilst they form large flocks in open settings, within our garden they are highly territorial, trying to protect food sources from other birds. The only threat to them would be the Sparrow Hawk.

Redwing



This is a beautifully marked bird and another winter migrant to our shores from the taiga forests of Scandinavia and Russia. The numbers of migrants are higher than fieldfares with over a million birds present between October and March. The flocks are said

Beauty at the Barn

4, Grey Gables, Vicarage Lane, Olveston
For appointments telephone Nicola on
01454 201717



Jessica Manicures
GELeration Nails
Shellac Nails
Jessica Pedicures
Spray Tanning
Waxing
Ear Piercing
Eyelash Perming
Eyebrow Shaping
Eyelash tinting
And more...
Evening appointments available
Gift vouchers available



Olveston & Tockington Tennis Club

*"Your local tennis club, next to Olveston Parish
hall"*

**Make 2023 the year to get back
on court.**

Coaching for all ages.

**Fabulous clubhouse with changing
facilities, kitchen, TV and table tennis.**

Call Martin 07720509653

Everyone welcome

to be nomadic and do not stay in one particular area for more than a few days, which does explain as to why I have seen large flocks (approx 50) around Elberton at the beginning of January but only for a short period. In December, during the spell of very cold weather, we saw around our garden a flock of around 10 with only about 2 of these coming into the garden to feed. They are not so territorial in the garden and seem willing to share the space and food with other birds. At night during October or November you may hear a high pitched tseep. This is likely to be a migrating redwing, a sound I have heard on numerous occasions. The redwing's distinguishing features are its orange/red flanks and underwing, which give it its name, and also its bold facial markings. The sexes are similar. My photograph of a redwing was taken in our garden in December 2022, just before the temperature plummeted.

Song Thrush and Mistle Thrush



These are recognisable birds which most people will have seen locally. They can easily be confused with each other. The key differences between them are the markings on the lower breast and underparts of the song thrush are 'spear headed' whilst the mistle thrushes lower spots are 'rounded'. The song thrush is smaller than the mistle thrush and its underwings in flight are a buff colour rather than white. The mistle thrush also has a longer neck and its behaviour is more territorial and aggressive.



**Technology brings us together and makes life easier but it can be confusing
What should you buy? How does it work?
And what if anything goes wrong?**

Phones / Laptops / Tablets / TV's / Printers / Smart home systems

- I can help you choose what's right for you
- I can teach you how it works
- I can fix most existing 'tech' problems

**HOME VISITS – VIRTUAL REMOTE ASSISTANCE – PERSONAL SHOPPING
TECHNICAL SUPPORT FOR YOU AT HOME OR AT WORK**

PRICING POLICY – Please pay me what you think is fair – SIMPLE!

ABOUT ME

Jed Williams – I'm 18 years old, live locally & have had my own business for 5 years
Email: help@myneat.co.uk - Mob: 07887 652358 - Landline: 01454 406000 – Web: myneat.co.uk

PREMIER HOMECARE Delivering Outstanding Live-In Care

A COVID-safe and affordable alternative to nursing home care.

Our fully managed, affordable 24 hour Live-In Care service allows you or your loved one to continue living in the safe, familiarity and comfort of the family home.

Our staff are hand picked specifically to match the personal needs and requirements of each individual client; guaranteeing you a bespoke and tailored service.

24 hour Care at Home - carers carry out all required duties following a personalised care-plan. They can manage medication, personal care, domestic duties as well as shopping and meal preparation plus trips out where required.

0117 456 2490
www.premier-homecare.co.uk

homecare.co.uk
Homecare.co.uk Review Score for Premier Homecare

Offices at:
24 Canford Lane
Westbury-on-Trym
BS9 3DH

67 Stoke Hill,
Stoke Bishop
BS9 1EP

Inspected and rated Q
Outstanding ☆

"We are delighted with the Live-In care that our mother receives in her home. The carers are patient, kind and very well-trained. We trust them completely with our mother's care."
ML, November 2020

el cuisine

Catering for any occasion
Private parties, Birthday and Anniversary Celebrations,
Weddings, Funerals, Corporate Events,
Formal Dinners, Shoot Lunches... whatever the occasion

www.el-cuisine.co.uk Please contact Emma 07931952939 info@el-cuisine.co.uk

Tockington Manor School and Nursery
for boys & girls aged 2 - 13

Limited places
available for
Reception
and Year 7
2023 entry

Book your private tour of the school with
our Headmaster at a time convenient to you.
01454 613229 www.tockingtonmanorschool.com Scan the QR.



It is thought 1.1 million pairs of song thrushes nest in the UK and 160,000 mistle thrushes. Both are also a migratory visitors. Some breeding birds of the UK - especially those in the north - will migrate south out of the breeding season, with some going to Europe.

The song thrush has a beautiful and vibrant song, comprising phrases that are repeated two or three times. The mistle thrush often sings during and after rain and holds another name 'the rain bird'. Its song is also different; it is loud and can be described as 'blackbird like' containing brief phrases and long pauses. If you see a thrush singing loudly at the very top of a tree it is quite likely to be the mistle thrush. The fact that the mistle thrush eats mistletoe berries gives a clue to its name. My photograph of a song thrush was taken early in December 2022, in our garden.

So, get yourself out and about and see if you can spot five different thrushes in February and, if any of you see a ring ouzel locally, then I'm sure Meeting Point would be pleased to hear from you.



February's Film

Monday 6th February
St. Mary's Church

A buttoned-up civil servant (played by national treasure Bill Nighy) receives an end-of-life prognosis. At first he sets out on a self-destructive booze-up, but then realises there really is something useful he can do – which is to pressurise the local council into building a much needed children's play area. Considered by many as the very best film of 2022, this is a remake of the critically acclaimed 1952 film Ikiru - To Live.

Doors open at 7pm, curtains up at 7:30pm. Licensed bar, tea/coffee. No admission charge (though donations are always welcome) and everyone welcome.

Join us for Coffee

Saturday coffee mornings are starting again in Olveston Methodist Hall on the 2nd and 4th Saturday of the month.

The first one will be on February 25th 10.30am - 12.00pm.

**'Indawes
- Outdawes'**
Decorating and
Home Improvements
Painting | Wall Papering
Floor Laying

Martin Dawes 07720 509653
martin.dawes@live.com

Digger and Driver Available
Out-Door Services
A. D. D. PLANT
Groundwork, Digging & Clearing
Turving, Any outdoor work

Tel: 01454 417372
Mobile: 07866 407683




The agent
for all seasons

keeping your garden
beautiful... ask us about
LAZYLAWN

- LazyLawn - superior artificial grass supply and installation - licensee for Bristol & South Wales
- landscape design and build with 25 years experience
- tree surgery
- garden makeovers
- regular garden maintenance

**Garretts Gardens
and Landscapes**
for Garretts Gardens or Landscapes
t 01454 614111 m 07974 109919
info@garrettslandscapes.co.uk
www.garrettsgardens.co.uk

Come rain or shine,
lisa costa estate
agents have the
experience and
knowledge to take
you smoothly through
the moving process.

lisa costa
RESIDENTIAL SALES & LETTINGS

53 High Street | Thornbury | BS35 2AR
01454 279734 | sales@lisacosta.co.uk | lisacosta.co.uk

Please note: If your property is currently on the market, the terms and conditions of your Existing agency agreement must be considered before instructing ourselves.



King Alfred the Great

It was 'standing room only' the last time Professor Ronald Hutton came to speak in Thornbury, so don't miss learning all about the most famous English king in the first half of a millennium of England's history.

King Alfred the Great is the only king who regularly features as a modern screen hero, and is often regarded as the person who created England itself. The Victorians thought him the most perfect of our monarchs. More recently it has been appreciated how completely the historical resources we have for him were created by Alfred's own propaganda machine, so that our image of him is the result of 'spin'.

Can we still find a real person behind the image and discover how 'great' he was? Where does 'burning the cakes' come in? Questions are to follow the talk. Professor Ronald Hutton's talk takes place in St.Mary's Church Hall, Eastbury Road, BS35 1DR on Tuesday 21st February at 7.30pm.

Tickets are £7.50 from AAGThornbury@gmail.com or 01454 850933.

How to Banish the Blues in March

Step one: Open your diary to Saturday 25th March.

Step two: Write in 'Thornbury Jazz Festival 2023, Marlwood School Drama Hall, from 4:00 – 9:30 pm'.

Step three: Book your tickets now!

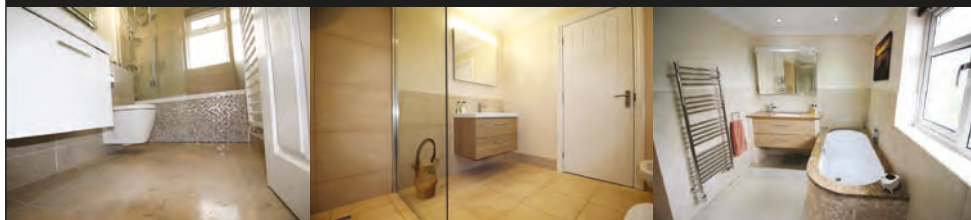
You'll enjoy four fabulous acts to please all jazz fans, from big-band swing to cool and mellow. We get off to a resounding start with terrific local talent – the Thornbury Swing Band with solo vocalist Shairon Lloyd. Next up are the Class Act Quartet, with smooth standards for two guitars, flute and bass. They are followed by the Mood Indigo Trio – vocalist Will Grealish with piano and bass – dipping into the Great American Songbook. Top of the bill are acclaimed New Orleans veterans of the Bristol jazz scene, Cass Caswell and the six-piece Storyville Strutters.

There's plenty of parking at Marlwood, Vattlingstone Lane, Alveston, BS35 3LA, and the excellent Hawkes House pizza van will be on hand with a range of hot food. Tickets are £25. Early booking is strongly recommended, by emailing AAGThornbury@gmail.com or on 01454 850933

Paul Whittaker

BATHROOMS & WETROOMS

DESIGN . SUPPLY . INSTALLATION



Tel: 07879 666221 . Website: www.paulwhittakerbathrooms.co.uk

Dunkley's

Chartered Accountants
30 YEAR ANNIVERSARY

HELPING YOU

MAKE THE RIGHT SOFTWARE
CHOICE FOR YOUR BUSINESS

TALK TO US ABOUT OUR CLOUD ACCOUNTING
SOFTWARE PACKAGES

T: 01454 619900 E: ADVICE@DUNKLEYS.ACCOUNTANTS

WOODLANDS GRANGE, WOODLANDS LANE, BRADLEY STOKE, BS32 4JY



Olveston Parish Council

Pat Savage

Greetings to all residents from the Parish Council serving the communities of Old Down, Olveston and Tockington.

Annual Parish Assembly

It will be held on Thursday 20th April from 7.00 to 9.00 pm. This is an opportunity for all members of the Community to meet and share with fellow Parishioners their activities and interests. In this respect we will be contacting the clubs and organisations who meet regularly in the Parish. If you have not heard, please do get in touch. We are looking for a short presentation of about ten minutes detailing the organisation. Should you wish to do a screen presentation then the Parish Hall has recently invested in an electric screen. For details please contact pat.savage@olvestonparishcouncil.gov.uk. Refreshments will be served at the end of the presentations.

NB We are looking for somebody to take the minutes of this Assembly - not verbatim, just bullet points. They can record if they wish, for reference, eg using an iPad. We will pay for services rendered. For more information contact: clerk@olvestonparishcouncil.gov.uk.

Vicarage Lane Play Area

In December 2022 the Council organised an open morning at the village hall where the proposed designs for the new equipment were on display. A number of families did pop in and were able to add their views and suggestions to the designs. As this was held in the run up to Christmas, we aim to hold a further open morning later in the spring.

Coronation Celebrations

Having celebrated the 70th Anniversary of the late Queen's reign in 2022, on 6th May 2023 we will celebrate the Coronation of Charles the Third. Whilst the celebrations may not be as elaborate as last year, nonetheless the Council would like to mark the occasion. The Coronation ceremony, which will be televised, will take place late morning and conclude in the early afternoon at around 2.30pm. The provisional plan would be to then hold an event possibly at the Vicarage Lane Play Area with entertainment for the children, a cash bar and family picnic finishing with a Hog roast later in the evening. The plans are very much in their infancy at the moment, so any suggestions or offers of help would be much appreciated. Please contact: pat.savage@olvestonparishcouncil.gov.uk

Legal advice
that brings
balance to life

Award winning legal advice
to help you navigate change
and plan for the future.





Let's talk about you or your business

www.gl.law 0117 906 9400

BUSINESS SERVICES · PROPERTY · DISPUTES · FAMILY LAW · WILLS & PROBATE

- All makes servicing and repairs
- Petrol and Diesel MOT Testing
- Tyres, Exhausts and Batteries
- Air Conditioning
- Latest Bosch On-Board Diagnostics
- Vehicle Sales



GREEN LANE GARAGE
OLVESTON

New Road, Olveston, BS35 4DX

01454 202030

the Good Garage Scheme




Parish Council Meetings

They are held on the fourth Tuesday of the month at the Queen Alexandra Memorial Pavilion and commence at 7.30pm. The agendas are posted on the village notice boards at least five days before the date of the meeting.

Piracy and Warfare in the Bristol Channel 1400 to 1700



In a change to our advertised programme (the original speaker having had to withdraw for health reasons), we're delighted that Philip Ashford is coming to tell us about Piracy and Warfare in the Bristol Channel over a 300-year period.

Philip has many good stories to tell. For instance, in 1443, Sir Henry Stradling and his wife and daughter were abducted in the Bristol Channel by locally born Bridgwater pirates, and Henry's father had to sell land in three counties to ransom the family. Not what you're hoping for when you embark on a sea voyage with your nearest and dearest! The idea caught on and pirates arrived from further afield.

In the 1500s, Bristol had to work hard to protect its lucrative wine trade, by equipping ships and mariners to fight the growing menace. Between 1610 and 1620, 29 Bristol ships were captured in the Channel by 'Barbary Turks', pirates from the North African coast. In the 1620s, these pirates took over and held the island of Lundy for 5 years.

But what happened to some of the Bristol crews and ships that were captured by Barbary Turks in the Bristol Channel? More than they bargained for, is the answer. Come to the talk and hear the details!

Olveston Parish Historical Society, Wed. 1st February 7.30pm. Methodist Church, The Street, Olveston.

If you're not a member, just pay on the door: £3. All welcome!

gsharchitects



FREE CONSULTATION

For further information please contact us on:

info@gsharchitects.co.uk
www.gsharchitects.co.uk
Almondsbury, Bristol

07780 000220

Build without planning permission

Quality design service from
concept to completion

Planning, construction drawings and
contract administration service
tailored to suit you

Domestic, Commercial,
and Sustainable Architecture.

Experienced working with
Listed Buildings

Build your dream home in your
garden

Development Advice and Appraisal

3D Visualisation Services

RIBA 

**New Passage
Cat Kennels**

**Large Runs ~ Heated Chalets
Licensed Cattery
in Pilning**

**Tel: 01454 632 456
www.catkennels.co.uk**

jfl
Design & Planning



Home Extensions - Change of Use - Floor Plans
Full Planning & Building Regs drawing service
Almondsbury based with successful local projects

contact *Julian Lowther* for friendly professional advice

t:0117 2591059 julian@jfl-planning.co.uk
m:0789 0179546 www.jfl-planning.co.uk

G.V.R PITCHER & SONS

**The Yard
Haw lane
Olveston
Bristol**



**TEL: 01454 619299
MOB: 07989 208964**

Property Care & Improvements

What is a School Governor?

A Volunteer

I have been a school governor in a local Primary School for quite a few years. I initially volunteered to join the governors when I was considering retirement and thinking about how I would occupy my time. Since I have a background in education, volunteering in a school seemed like an obvious choice. However, I soon found that primary schools are very different from secondary, where my experience had been, and I have really enjoyed learning about the differences. I also soon found that most governors do not have a background in education and that it was really not necessary – schools need a wide range of skills and backgrounds in their governors as they are really like small businesses dealing with all the issues that businesses do. The time I spend on governors' business varies – some weeks it may be up to 3 or 4 hours and some weeks none at all. There are also training sessions which are really helpful – you are not just thrown in at the deep end.



A lot of the work of being a governor involves attending meetings. This is because our role is to support the school in making strategic decisions about how the school will run. We are not there to help with the day to day running of the school – although I will come back to this later. We are there to hear reports from the Headteacher about developments in the school and updates on issues such as staffing, finances and children's attainment. We are also

CAR - VAN - MINIBUS

SELF DRIVE - LOW-COST - SHORT/LONG TERM
WIDE VEHICLE SELECTION - CONTRACT HIRE

- Fully Comprehensive Insurance
- Extra-Low Off Peak Rates
- No Hidden Charges
- Breakdown Cover
- Cars
- Minibuses
- Transits
- Sprinters
- Lutons & Tail Lifts

THORNBURY
SELF DRIVE HIRE

Established Over 20 Years

01454 414111

www.tsdhire.co.uk
 Mob: 07768 232424
 Email: info@tsdhire.co.uk

COOPER ROAD, THORNBURY IND. EST., THORNBURY, BRISTOL BS35 3UP

THORNBURY AUTOBODIES

Car & Commercial Body Repairs

- Crash Repair • Re-Sprays • Dent Repair
- Spray Booth Facilities • Full Body Jigging • Recovery
- Top Standard Of Work
- Fully Insured
- Insurance & Private Work

Courtesy Vehicles • Free Estimates • Over 25 Years Experience

THORNBURY
01454 419985

Email: thornburyautobodies.ps@gmail.com www.thornburyautobodies.co.uk
 Cooper Road, Thornbury Industrial Estate, BS35 3UP

WJC

Plumbing & Tiling

Bathroom & Wet Room Design & Installations
 Tiling • General Plumbing
 Kitchen Installation • Plastering

Billy Cook
 WJC Plumbing & Tiling

07748 085 920
 wjcplumbing@outlook.com

there to challenge the Head to explain how children are progressing – the balance between support and challenge is a delicate one!

During my time as a governor I have been a member of committees monitoring finance and the curriculum – most governing bodies delegate much of their business to smaller committees so that the full group of governors does not have to keep on top of all the wide range of issues. Of course schools have regular visits from Ofsted – which can be stressful, but if we know our school well then it can be a pleasure to show the inspectors how well they are doing.

If this all sounds a bit dry, it really isn't! The joy of being involved in a school is getting to know the children and seeing them enjoying their learning. It is important to get into the school more informally from time to time to get a feel for how it is working. And of course there are regular events such as concerts, plays, sports days and fairs to which we are invited. This was a bit limited during the last couple of years but it is great that everything is now getting back to normal.

I said I would come back to involvement in day-to-day activities. This is something that being a governor has introduced me to – although it is separate from my role as a governor. I volunteer to help out with some of the children's learning each week and find this provides an invaluable insight for me to see the school in action as well as being a useful extra support to some of the teachers. Schools are always keen to hear from local people who can offer their time and/or skills – for example by hearing children read each week.

I feel that I have gained a lot from my involvement as a Primary School governor and would encourage anyone to get involved – we all have lots to offer to this important part of our local community.

FFI: www.gov.uk/become-school-college-governor

Walk and Talk

Carers Support Centre for Bristol and South Gloucestershire is happy to announce new Walk and Talks for unpaid carers and the people they care for. Walk and Talks are popular, easy, walks around local green areas launched last September centre by the Fishponds based charity. On a Walk and Talk, carers get a chance to enjoy a break from their caring responsibilities by being outdoors in the company of other carers.

One of the charity's friendly support workers leads the walk, offering a listening ear and providing information to support walkers in their caring role. The overall aim of Walk and Talk is to improve the health and wellbeing of carers and those they care for. The groups take place once a week over six

TMD
THE MOWER DOCTOR

GARDEN MACHINERY SPECIALISTS
SALES, SERVICE AND SPARES

E-MAIL: themowerdoctor@hotmail.co.uk WEBSITE: www.themowerdoctor.net
ADDRESS: Unit 2-3 The Rearing Unit, Oldbury Lane, Oldbury-On Severn, BS35 1RF
TELEPHONE: 01454 411 701








DEALERS FOR:






optimus
"Optimise your Health"

Please Enquire:

PHYSIOTHERAPY
CHIROPRACTIC
PODIATRY
CHIROPODY

Tel: 01454 528608
Email: info@optimuscp.com
Web: optimuscp.com

11 The Plain, Thornbury, BS35 2AG

OLDOWN
TREE SURGEONS

TREE SURGERY AND HEDGE MAINTENANCE

PROFESSIONAL. QUALIFIED. FULLY INSURED.

www.oldowntrees.org

Antony Leicester 07800512408 info@oldowntrees.org

EC COMPUTERS

Computer support and solutions for the home and business user.

- PC/laptop repairs
- Virus removal
- Wifi/broadband issues
- Sponsors of Olveston FC

How can we help? Tel: 01454 281 500 Web: www.eccomputers.co.uk

IT Support/Repairs Office Equipment Print Solutions Telecoms Cyber Security Managed Services Software/Database applications

weeks. There is a range of groups, such as carers on their own, carers and those they care for, and age-specific groups like young adult carers.

It is free to take part and all carers are welcome. The Carers Support Centre's aim is to make the walks as inclusive as possible. So, whatever your background, whatever your walking ability, Carers Support Centre want you to come and join them and your fellow carers on a Walk and Talk. The new Walk and Talks are scheduled to take place in the new year in Bradley Stoke, Horfield and Winterbourne, with more planned for later in the year.

For more information about Walk and Talk, and to take part, contact Stacey on 0117 939 2562, email her at walk@carerssupportcentre.org.uk or visit the charity's website at: <https://www.carerssupportcentre.org.uk>

Roy Garlick

Les Harper



We were very sorry to hear, just a few days before Christmas, of the death of Roy Garlick.

Roy was editor of Meeting Point from April 1993 to June 1995, taking over from Joyce Davis and succeeded by Bill Morgan.

We remember Roy for the meticulous way he worked, which characterised all he did, as did his charming and gentlemanly manner. He will be missed by all who knew him. We send our sympathy to his wife Rita.

Roy was active in many aspects of local life. He sang in St Mary's Church Choir for more than 40 years and was their Treasurer. He performed in The Parish Players from the earliest days in their revue era. The photo shows Roy in 1995, enjoying the Celebrations of the 50th Anniversary of VE Day.

February at Thornbury Library

The Perilous Phlogisticon

Presented by local performers The Red Herrings. A Steampunk plot of murder and mystery.

Saturday 11th February at 2pm.

Tickets £3.20 Library Members £6.40 Non-Members

YOUR PC GURU

COMPUTING FOR 'MERE' MORTALS

01454 616365

- Home visits
- Computer Repair
- Phone & Tablet setup
- Home Wireless & Broadband
- Smart Home Tech
- Complete Mac support

www.yourpcguru.co.uk
Technology Advice & Repairs

JC 4x4 Ltd SPECIALIST IN LANDROVER

SERVICE • REPAIR WORK • DIAGNOSTICS • MOTS • OTHER VEHICLES WELCOME

CALL JAMES: 01454 261067 / 07966 086447



07307 727244

Free Quotes

Domestic	Radiant heating
Commercial	Boilers
Breakdowns/ call outs	Radiators
Servicing	Plumbing
Installations	
Warm air heating	LPG, natural gas, oil



www.edgeheatingandplumbing.com info@edgeheatingandplumbing.com

Fairy Tales Craft Session and Treasure Hunt

Wednesday 15th February 10.30am-12pm

Have wonderful fun being creative in the library or pick up a craft bag between 11th February and 18th February to create at home

Keeping warm and well

Come and relax with a warm drink in the library throughout the day on Wednesdays and Thursdays 9.30am-4.pm

Use the computers or use your own iPad, phone etc. (wifi available), read a book, a newspaper, browse the shelves, enjoy a communal puzzle or just relax.

Have You Read...?

A book group for everyone. Come and enjoy an open book group with a difference. No set novel to read. Just drop in for an hour for refreshments and a chat.

Friday 3rd February 2pm-3pm

BFG's (Book Focus Group) for Years 7 and up

Come and spend an hour discussing your favourite books with others.

A great way of finding brilliant new authors to read

Thursday 9th February 4pm-5pm

Computer Support One to One

Book a session with our computer volunteer for IT and digital support

Every Thursday 9.30am, 10.30am, 11.30am

Sight Support West of England Drop-in

Support and advice for people with visual impairments.

Monday 20th February 10am-1pm

Exciting News

Award winning author Rachel Joyce will be at Thornbury Library on March 18th

More information to come in the March Newsletter

Yours Faithfully

Danny Bamfield
Aust Evangelical Church

Faith. When someone says this word, it is almost always associated with believing in God. Strange in some ways as it means - to trust or have confidence in. Everyone has faith in something whether it is themselves, a



friend, science, etc, the list is endless. I think the bible's explanation of faith is unbeatable.

'Faith is the substance of things hoped for, the evidence of things not seen.'
Hebrews 11v1

Substance? Evidence? These are things you can test and prove.

Growing up in a Christian family is something I count as a privilege. I can't remember a time when I didn't believe in God, but as I came to the age of reason in my teens, I wondered about some of the things I was taught and morally I wasn't that bothered about some of the things I did that now make me wince. I started reading my bible regularly at 14 and made a conscious decision to follow Jesus Christ at around 16 at a Christian youth event.

The next year someone gave me a book called 'They Speak in Other Tongues' by John Sherrill. I was amazed by this book, and it bothered me for about six months, as I had never had this Pentecostal experience. Eventually it did happen to me. Suddenly it felt like the fire of God had fallen and I was wrapped in the love of God, for two weeks it felt like I was being hugged. The bible came alive and as one preacher described it, the words seemed to come out and dance on the page. The other thing I noticed was that I seemed to be in a spiritual fight that wasn't easy, but I was given the grace to push through, usually by a verse in the bible and grew stronger as a result. I was also convicted of things that were wrong in my life and needed changing, something that still happens today, yet it doesn't seem heavy, more releasing.

By this time, I was praying in tongues and reading my bible daily. I became so amazed at the power of God to be able to change me that I decided I was going to believe the bible unless it was proven wrong- *'Let God be true and every man a liar'* Romans 3v4, is a verse that I discovered which seemed to back this view.

I came to believe in the truth of the bible, firstly in that Jesus is alive and can bring us forgiveness and a relationship with God. Secondly the historical accounts of creation, man's fall, the flood, Moses and Israel, the ten commandments of the Old Testament, etc, made sense and it is easy to find plenty of evidence to support this. Therefore, I developed a faith with substance and evidence not just a 'head in the clouds' approach to religion, something that remains as strong in me today nearly 40 years later. It's this 'faith' I recommend to anyone who is interested, something real and personal to the heart, yet factual with evidence for the mind.

If you struggle with the factual, I recommend a book I read recently 'Evidence that Demands a Verdict' by Josh McDowell, but facts are only evidence pointing to the truth; Jesus said *'I am the way, the truth and the life'* and *'if you hold to my teachings...you will know the truth and the truth will set you free'*.

MEMORIALS &
MONUMENTS



Supplied & Erected

NEIL VIZARD
01454 419108

BAMFIELD
TREE SERVICES
TREE SURGERY AND LOGS



www.bamfieldtreeservices.co.uk
07761 810483

prestige
event equipment hire

Supplying you with the best equipment to succeed!
CELEBRATIONS & CORPORATE EVENTS

CUTLERY, CHINA, GLASSWARE, LINEN, REFRIGERATION,
COOKING EQUIPMENT, BARBEQUES, FURNITURE & MORE

Fast and Efficient, we stock a wide variety of
equipment covering anything from
WEDDINGS to FESTIVALS.

For a FREE quote please call: 01179613170
info@prestigecateringhire.co.uk
www.prestigecatering.co.uk

HK **Harkell**
Building services

- MAINTENANCE
- BRICKWORK
- ROOFING
- FENCING
- REPAIRS
- PLASTERING
- CARPENTRY
- PATIO ETC

FOR A FREE QUOTATION PLEASE CALL
TEL: 01454 617110 MOBILE: 0787 6682546

Window Cleaning

07976 694744 - 0117 9085794



M. Gray Window Cleaning

Family run business for over 25 years
experience working in the Almondsbury,
Olveston, Aust areas - and nearby.

Email: mgwc1@hotmail.com

Church News

ST MARY the VIRGIN, OLVESTON

Feb 5	10am 6pm	Holy Communion Evensong	Revs Lloyd & Bone Rev David Moss
Feb 12	10am 6pm	Morning Prayer Holy Communion	Janet McBride Fran Brealey
Feb 19	10am 6pm	Morning Prayer Holy Communion	Fran Brealey Rev David Moss
Feb 22	10am	Ash Wednesday Benefice Service	Revs Lloyd, Moss and Bone
Feb 26	10am 6pm	Holy Communion Evensong	Rev Ann Lloyd Fran Brealey

Every Saturday in Term Time, 'REFRESH', 4.30-5.30 - Fun, relaxed church for families, all welcome.

Every Wednesday, Holy Communion, 10am.

NB. Clergy may change.

Contact: Rev David Moss, 01454 415190; email: mossds@gmail.com

CHAPELRY OF ST JOHN, AUST

Feb 12	10am	Morning Prayer	Trevor Cook
Feb 26	10am	Holy Communion	Trevor Cook

Contact: Trevor Cook, 01454 618442

Church Wardens: Jenn Dickens 632312 and Clive Roberts 632238

ST MARY DE MALMESBURY, LITTLETON-ON-SEVERN

Feb 12	9am	Morning Prayer	Tracey Black
Feb 26	9am	Holy Communion	Rev David Bone

Contacts: Tracey Black 417660 and Tim Pyper 416422 /07802 419451

ST JOHN THE EVANGELIST, ELBERTON

Feb 12	9am	Morning Prayer	Judith Heybyrne
Feb 26	9am	Holy Communion	Judith Heybyrne

Contacts: Judith Heybyrne 616725 and John Gunnery 413225



green side
Landscaping

The Cottage, Hortham Lane,
Almondsbury, Bristol BS32 4JP

Greenside Landscaping can offer a wide range of services including:

Artificial Grass ~ Brick & Block Driveways
Decking ~ Fencing & Gates
Garden Design ~ Patios & Paths
Planting ~ Ponds & Water Features
Turfing & Seeding ~ Walling

We pride ourselves on flexibility and we strive to meet our client's requirements and budgets.

www.greenside-landscaping.co.uk
Tel: 01594 841559 Mob: 07980 384321
Email: paulbradburn@hotmail.com



MORAS
Decorating Services

ANDREW MORAS
Quality Painting and Decorating Services

For your **FREE** no obligation quote contact Andrew:

07962069036

✉ andrew@morasdecorating.co.uk
www.morasdecorating.co.uk



Tavira
Algarve, Portugal
3 Bed Apartment!
"can accommodate up to 8 people"

Modern 3-bedroom apartment in picturesque & historic Algarve town. 2-bathrooms including one en-suite, 2-balconies & roof terrace. Fully furnished, sleeps 6-8. Easy walking to thriving town centre. Close to railway station, golf courses & beaches. 30 minutes drive from Faro. Ideal for families or golfers. Tel: 07889 727729 Email: anthonyar@aol.com - www.aminpadtavira.co.uk



BE DLAM
www.bedlambeds.com

- Free local delivery
- Free assembly
- Free disposal of your bed

Divans / Mattresses / Ottoman & Wall beds / Memory foam & latex mattresses / Beds made to measure / Pine, Metal & leather beds

**Open Tuesday to Friday: 9am-5pm
Saturday: 10am-3pm**

Visit our showroom: The Old Post Office
26a Gloucester Road, Rudgeway, Bristol,
BS35 3RY (by the speed camera)

01454 617 277 or 07887 853479



Thornbury Stairlifts
SALES SERVICING & REPAIRS



- New & Re-conditioned Stairlifts & Warranty
- Removals & Relocations
- Free Surveys & Quotes - No Obligation
- Rentals for Straight Stairs

Independent, Professional & Friendly Advice
Over 24 years practical experience



Independent Stairlift Specialist
01454 413748 07833 318722
www.thornburystairlifts.co.uk

OLVESTON AND TOCKINGTON METHODIST CHURCH

Feb 5	10am	Tock Ch	Morning Worship led by Mr Chris Sledge
Feb 12	10am	Olv Ch	Morning Worship led by Mrs Rosalie Doyle
Feb 19	10am	Tock Ch	Morning Worship led by Mr Ken Luxon
Feb 26	10am	Olv Ch	Morning Worship led by Mr Ken Thomas

Contact: Rev Dr Simon Edwards 418176,
simon.edwards@methodist.org.uk

THE VINE HOUSE OF PRAYER, Pilning Street, Awkley

Meeting at 11am every Sunday and on the 1st and 3rd Wednesdays of each month at 2.30pm.

Contacts: Mike and Barbara Matthews, tel. 07512 917229 or email:
thevine_awkley@hotmail.com

THE OASIS CHURCH, OLD DOWN

Services at 6.30pm every Sunday. All are welcome.

Contact: Neil Mobbs, cnmobbs@hotmail.com

AUST EVANGELICAL and LITTLETON EVANGELICAL CHURCHES

Contact: Danny Bamfield 01454 419324 e-mail danny@thebamfields.co.uk

RC CHURCH OF CHRIST THE KING, Thornbury -

Mass on Sundays at 9.30 and 10.30am

Contact: 01454 412223, www.ctk-thornbury.org.uk

SOCIETY OF FRIENDS (QUAKERS), Thornbury

Contact: Brian Hawkins, hawkinsb863@gmail.com 01454 854867



HOLIDAY LET 6 BERTH HOLIDAY HOME
(2 Bed, 1 Ensuite)

LADRAM BAY
OTTERTON . BUDLEIGH SALTERTON . EX9 7BX

Central Heating . Double-Glazed
Private Beach . Fishing Trips . Cliff Walks
Restaurant . Bar . Live Entertainment
Indoor Pool . Kids Club
Shop . Cafe . Takeaway

Tony Gardner
07889 727 729

Diary Dates for February

Information believed to be correct at going to press.

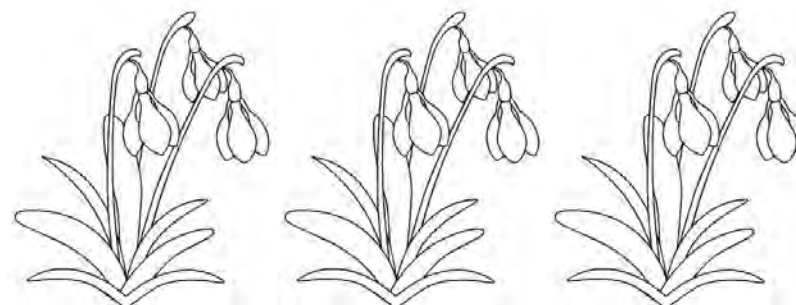
1 Wed	OPHS: Research the History of Your House	7.30	OMC
2 Thurs	Thornbury Farmers' Market Coffee Shop 'Good Afternoon Choir', every week	9- 1.30 9-12 1-3	S+M URC
3 Fri	Over 60's Bingo or Quiz	2-4	DGCL
4 Sat	'Refresh', relaxed fun for families	4.30	S+M
5 Sun	Tortworth Lake open	10am	
6 Mon	Severn Vale Flower Club Monday Movies	2pm 7.30	SMCH S+M
7 Tues	Over 60's Coffee Morning Citizens Advice, every Tuesday Thornbury Memory Café Aust Parish Council	10-12 10-12 10.15 7.30	DGCL TCC TMH EVH
9 Thurs	Thornbury Farmers' Market Coffee Shop	9 - 1.30 9-12	S+M
10 Fri	Over 60's Bingo or Quiz	2-4	DGCL
11 Sat	Coffee Morning	10.30 -12	OMH
14 Tues	Over 60's Coffee Morning Thornbury Memory Café WI Aust Parish Council	10-12 10.15 7.30 7.30	DGCL TMH PH EVH
15 Wed	'Kiss Me, Kate' - The Parish Players	7.30	PH
16 Thur	Thornbury Farmers' Market Coffee Shop	9- 1.30 10-12	S+M
21 Tues	Thornbury Memory Cafe Olveston Parish Council	10.15 7.30	TMH PH
22 Wed	Alveston Historical Soc. 'A Visit to the Antipodes in 1852 and its Impact on a unique Gloucestershire house'.	7.30	AMC

23 Thurs	Coffee Shop	9-12	S+M
25 Sat	Coffee Morning	10.30 - 12	OMH
28 Tues	Olveston Parish Council	7.30	PH

KEY: **AMC** - Alveston Methodist Church, **AMH** - Alveston Methodist Hall, **CS** - Castle School, **CTK** - Christ the King, **DGCL** - Daldry Gardens Community Lounge, **EVH** - Elberton Village Hall, **OMC** - Olveston Methodist Church, **OMH** - Olveston Methodist Hall, **OPH** - Olveston Parish Hall, **S+M** - St Mary's Church, **SMCH** - St Mary Church Hall Thornbury, **TCC** - Turnberries Community Centre, **TMH** - Thornbury Methodist Church Hall, **URC** - United Reform Church

Looking Forward March

25 Sat Thornbury Jazz Festival at Marlwood School, 4.00-9.30pm.



Contact details for any clubs or organisations in the Meeting Point area can be found in the Meeting Point Directory on the community website: www.olvestonandaust.com. If you would like to update your organisation's details, please email: meetingpointsecretary@olvestonandaust.com

Advertisements Neither Meeting Point, its editor, nor management committee accept any responsibility or give any guarantee in case of any dispute or claim as to quality, condition or delivery of commodities or services advertised in this magazine. It is not to be taken that publication implies recommendation. It is always advisable to check prices when ordering goods or services.

Views expressed by contributors are not necessarily those of the editor or Meeting Point magazine
Copyright Meeting Point 2023. Copyright remains with the author(s) and Meeting Point. No part of this publication may be reproduced or transmitted in any form without the prior permission of the copyright owners.

Meeting Point is printed by Motion Printing Ltd.



OLVESTON STORES & POST OFFICE

NOW STOCKING - JON THORNER'S FULL RANGE

NEW COSTA EXPRESS MACHINE IN STORE

HOME DELIVERIES (NO MINIMUM SPEND)

NEWSPAPERS DELIVERED (SMALL CHARGE)

PAYZONE FACILITY FOR BILL PAYMENTS, GAS, AND ELECTRIC TOP UPS

OUR INSTORE POST OFFICE OFFERS A WIDE RANGE OF SERVICES

CAR TAX
BILL PAYMENTS
CURRENCY ORDERS
POSTAGE
A RANGE OF INSURANCES
&
MUCH MORE

01454 612269

olvestonstores@btconnect.com

BONDS *of* THORNBURY

INDEPENDENT ESTATE AGENTS



A truly local independent estate agency with over 40 years of experience and with unrivalled knowledge of the property market within Thornbury and South Gloucestershire.

Our caring sales business is based on our reputation, honesty and integrity.

Please contact: Rowena Moncrieffe
for further details...

14 The Plain, Thornbury

Tel No: 01454 858007

www.bondsofthornbury.co.uk

enquiries@bondsofthornbury.co.uk

