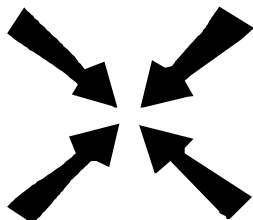


MEETING POINT



FEBRUARY 2016



Meeting Point

Volume 40, Number 5, February 2016

The community magazine for the villages of Olveston, Tockington, Old Down, Lower Hazel, Awkley, Ingst, Aust, Elberton and Littleton upon Severn

EDITOR:

Chris Bolton
The Old Meeting House
The Green, Olveston
Bristol BS35 4EJ
Tel: 01454 610056
*meetingpointeditor@
gmail.com*

ASSISTANT EDITOR:

Angela Williams
Ashlea
Haw Lane
Olveston
Bristol BS35 4EG
Tel 01454 612850
*meetingpointmagazine@
gmail.com*

ADVERTISING:

Nigel Dawes
Cromwell House
The Street,
Olveston
Bristol BS35 4DR
Tel: 01454 201558
julie.dawes@tiscali.co.uk

Publication date
1st of each month

**Material for March 2016
to the Editor or Deputy Editor
by 8th February 2016.**

From the Editor

Always on the look-out for interesting anniversaries, I noticed that 28th February marks 60 years since Francis Crick and James Watson announced the double-helix structure of DNA. It's astonishing to contemplate how far the applications deriving from it have reached in only 60 years, mainly in medicine, of course, but also forensic science, genealogy and evolution. What a momentous piece of pure science that was!

Closer to the present, this edition sees the return of Marcus Bean's study of Olveston's annual weather, as well as his interesting review of trends over 20 years. Nine-year old Rebekah Vizard gives us a charming account of a Brownie Sleepover. And, as ever, there is news of an impressive range of things for you to do during the month.

The picture on this month's cover is "Rainbow over the Village" by Alex Stagg. This was one of the winning entries in Littleton-on-Severn's Photography Competition in 2015.

Meeting Point Founded in 1976 by the Anglican and Methodist churches in Olveston, near Bristol

**Meeting Point magazine and Meeting Point Directory are online at the
Community Website: www.olvestonandaust.com**

Olveston Parish Matters

Richard Rogers (clerk@olvestonparishcouncil.gov.uk)

January's 'Parish Matters' article gave comprehensive contact details for Councillors as well as the new website details (www.olvestonparishcouncil.gov.uk). Further information has now been uploaded and a new Parish Council logo has also been created.

South Glos Council have complimented the parish on the level of response to the Olveston Parish Housing Needs Survey, and the Parish Council would like to pass their thanks onto everyone who responded. South Glos Council expect to publish the initial findings within the next two months.

Olveston Parish Steering Group and its various Sub Groups have continued to meet and develop their ideas on a number of projects. The 'Communications' Sub Group looking at further ways to make information available and to establish how residents can best access pertinent information are shortly to publish a questionnaire on this subject, and all residents are again asked to respond.

Surprisingly given the strength of feeling expressed in the Parish Vision Survey, there are currently insufficient volunteers for the Sub Group looking into Parking and Traffic issues. Anyone interested should contact the Clerk as soon as possible, please.

As this article goes to press, Olveston Parish Council will be interviewing for a new Councillor, and it hoped that someone will be in place by the beginning of February.

Come along and meet all the Councillors at the **Annual Parish Assembly at 7:30 pm on Tuesday 17th May 2016 in the Parish Hall**. There will be updates on the Housing Needs Survey as well as briefings on the work being undertaken by the Sub Committees to the Olveston Parish Steering Group – we look forward to seeing you then. Alternatively the next **Parish Council Meeting is on Tuesday 23rd February**.

From the Registers St Mary's Olveston

13th December 2015: Baptism of Holly-Rose, daughter of Edward Brown and Holly Ford.

9th January 2016: Wedding of John Neville Hallworth and Joanne Rachel Girdler.

2015 Weather Report for Olveston

Marcus Bean

Listed below are the highlights for the year, followed by a short summary for each month.

1. Temperature (degrees Celsius)			Date recorded
1.1	Highest day maximum temperature	32.2	2 nd July
1.2	Lowest day maximum temperature	3.9	8 th February
1.3	Highest night temperature	17.8	1 st July
1.4	Lowest night temperature	-4.3	23 rd January
2. Barometric pressure (millibars)			
2.1	Maximum pressure	1041	8 th February
2.2	Minimum pressure	977	30 th January
3. Wind			
3.1	Maximum speed	56 mph	15 th January
3.2	Prevailing direction	Westerly	95 days
4. Rainfall (millimetres)			
4.1	Maximum in one day	26.97	14 th August
4.2	Wettest Month	120.14	November
4.3	Driest month	15.23	April
4.4	Total for the year	822.68	
	Equivalent to	32.29 inches	

Commentary

January was a fairly typical month with a mixture of high and low pressure systems, 7 days with gales and a cold spell at the month end. Temperature was 0.5°C below average and we had one snow shower and a thunderstorm. The first half of **February** was dominated by high pressure and little rain. We had 11 nights with sub-zero temperatures. It was an unusually quiet **March** with no gales or air frosts but much cloud. On 20th a partial eclipse of the sun occurred with approx. 80% obscuration. Very little rain fell in **April**, with high pressure dominating and higher than normal levels of sunshine. Rainfall was less than a third of normal. **May** was typical, with constantly changing weather and quite cool, with temperature 1.5°C below norm. Cool dry conditions prevailed in **June** with 19 days without rain. Rainfall was an inch below norm, and temperature was 1°C below average. The beginning of **July** was very hot;

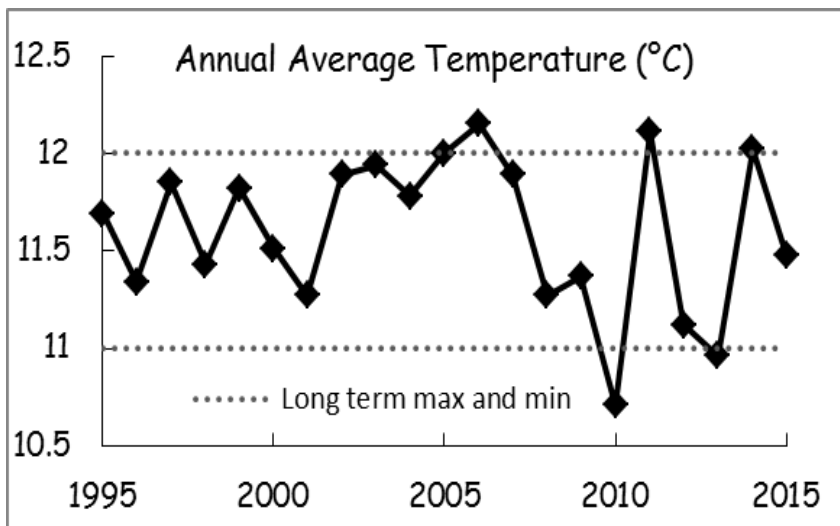
mid-month was dry, but significant rainfall occurred at the month end. Cold and wet conditions returned in **August** with Atlantic low pressure systems in constant attendance. Temperature was 1°C below norm and rainfall 1¼ inches over average. Settled weather returned in **September** but despite this, chilly conditions prevailed, resulting in the temperatures being 2°C below average. High pressure dominated in **October**; there were 21 days without rain, with total rainfall being 1.5inches below norm, the lowest I have recorded for this month. Wet, windy and mild conditions returned in **November**, with rainfall being an inch over norm and temperatures 2°C above average. Atlantic low pressure systems dominated the weather in **December** bringing wet and windy weather, and also extremely mild conditions: it was the warmest December I have recorded.

The year as a whole was unexceptional with rainfall marginally below average – due to a dry second quarter – whilst pressure and temperature were close to norm.

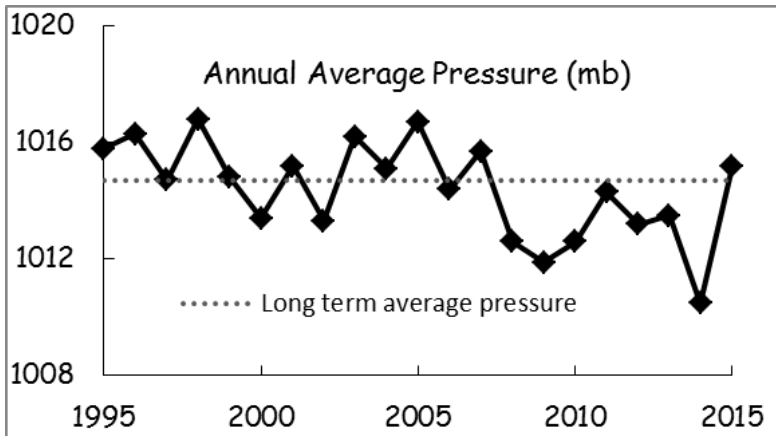
Long Term Weather Review: 1995 to 2015

The charts should be read in conjunction with the following comments:

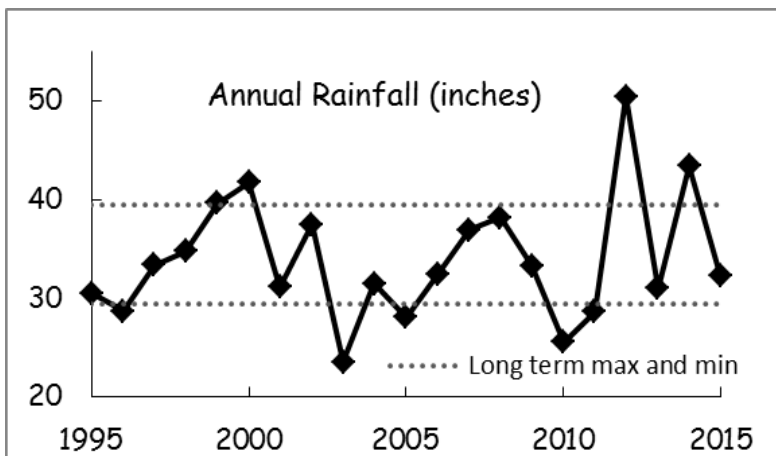
The first twelve years of the average temperature chart show variation within the long term range. However, the late period shows greater swings, but without a warming trend



The first ten years of the average pressure chart (next page) shows fairly significant fluctuations around the long term mean. The later years show the same variability but around a much lower mean pressure than the long term.



Whilst the rainfall has shown significant variations over the years it has mainly remained within the max/min range – until 2012 when the record for Olveston was recorded. Since then, significant variation has occurred.



When viewing the charts it should be remembered that, other than for rainfall, these are annual averages, and are thus fairly insensitive, with any variations being significant.

I leave the reader to draw their own conclusions from the charts, but it is worthy of note that the very dry year of 2003 had less than half the rainfall of the wettest year, 2012. Also, the variation of 1.4°C in average temperature between 2010 and 2011 is quite remarkable.

A final thought: our proximity to the Severn Estuary provides a small area with a unique micro-climate. This probably explains why a Saxon called Ælf established his farmstead here – Ælftūn – thus resulting in the founding of our village (known reference being in 955-9 AD).



OPTA Annual Quiz

Friday 5th February Parish Hall, Tockington

- Doors open 7pm for a prompt 7.30pm start.
- Teams of 4 (max)
- £5 per person to include assorted refreshments.
- There will be a bar serving beer, wine and soft drinks.

This is always a very popular event, so please can you ring Noel on 01454 614099 to reserve your table?

Two other important dates for your diaries:

- The **Great Olveston Wine Challenge** will be held in the **Parish Hall on Friday April 15th**.
- We have been invited to Bréhan for the 2016 twinning visit from **Friday April 29th to Monday May 2nd**.

More information will follow in future editions of Meeting Point.

Tockington and Olveston Methodist Church

A big **THANK YOU** to all those kind people who turned out on a damp, dark Sunday afternoon to give their support to our Festive Afternoon Tea.

Through your generosity, the amazing sum of £370 was raised, enabling Caring at Christmas to take more of the homeless out of the cold and off the streets for Christmas. A hot shower, a clean bed, three good meals a day. Fresh clothes and a friendly face – what a wonderful Christmas gift, given with no wrapping paper, not tinsel, no glitter, just love. Thank you.

News from St Mary's

Roly Bain

What are you doing for Lent in 2016?

On Ash Wednesday, 10th February there will be a Severnside Holy Communion at All Saints, Easter Compton at 7.30 p.m., and also at St Mary's with ashes at 9 a.m.

Giving up chocolate or alcohol during Lent is for many of us an expression of "fasting" – a small stand against the consumer culture and a recognition that others have to "do without" whether it's Lent or not. Why not put the savings made towards the "**Loaves & Fishes**" project run by the Sisters of the Church in St Paul's Bristol, and thereby feed the homeless and the needy?



There will be groups meeting to look at the very current problem of '**Migration and movement**' prepared by **Us.** (the new name for USPG) and '**The Psalms – prayers for today's church**' – a York Course written by Bishop Stephen Cotterell, **Lent Films** on Tuesdays at 7.30 are set out in a separate leaflet.

Lent Preachers

We're also having a series of Lenten preachers at our 10am services. Canon John Poarch, known to many people in this area but now retired and living in Horfield, kicks us off on Feb 14th. The Revd Debbie Dewes, Vicar of St Luke, Brislington and formerly on the staff at Bath Abbey, is coming on the 21st. On Feb 29th we welcome the Rt Revd Richard Atkinson, Bishop of Bedford.

Confirmation service

The Bishop of Bristol is coming here for a Confirmation service on Monday, March 7th, at 7.30pm. If you'd like to be confirmed, please have a word with Roly. It's never too late!

Fizz 'n' Fish Off!

We had advertised that we would be having a Fish 'n' Fish evening on Feb 6th as a pre-Lent celebration, but we have now decided to cancel it, not least because there's a similar event in the Village Hall at the end of the month. Sorry to disappoint you.

Quizzes

Thank you to those who came to the Quiz last month – there were 84 of us, the stew and dumplings were excellent, and we made a profit of £563.50 for church funds. The next one for your diaries is April 23rd and we'll be serving Spag Bol. If you want to be on the mailing list for Quizzes, email Roly at roly@rolybain.co.uk.

Friends of St. Mary's

The prize winners in the January draw, held on 7th January 2016 at the Friends' Committee Meeting were:-

<u>Amount</u>	<u>Number</u>	<u>Name</u>
£150	175	Mrs B Morgan, Tockington
£75	512	Mrs R Arkell, Olveston
£25	330	Mr & Mrs K Lazell, Tockington
£25	545	Mrs S Chick, Olveston
£25	297	Mrs J Dickens, Aust
£20	276	Mrs L Evans, Alveston
£20	547	Mr & Mrs W J Harries, Olveston
£20	301	Mrs J Rawles, Olveston
£10	200	Dr D Shaw, Olveston
£10	394	Mrs S McLeavy, Olveston
£10	335	Mr & Mrs A Bates, Olveston
£10	559	Mrs C Healey, Olveston
£10	378	Mr N H Dawes, Olveston

If you are not yet a member and wish to join the lottery please telephone Andy Phillips on 01454 614890.

Old Down Cricket Club

Tony Gardner 07889 727729

150 Club Winners January 2016:

£50	Matt Snell
£15	Steve Clarke
£5	Chris Northover

Latest £25 Bonus Ball Winners:

5th December	Dave Gardner
12th December	Dave Gardner
26th December	Andy Rowen
9th January	Paddy Gardner

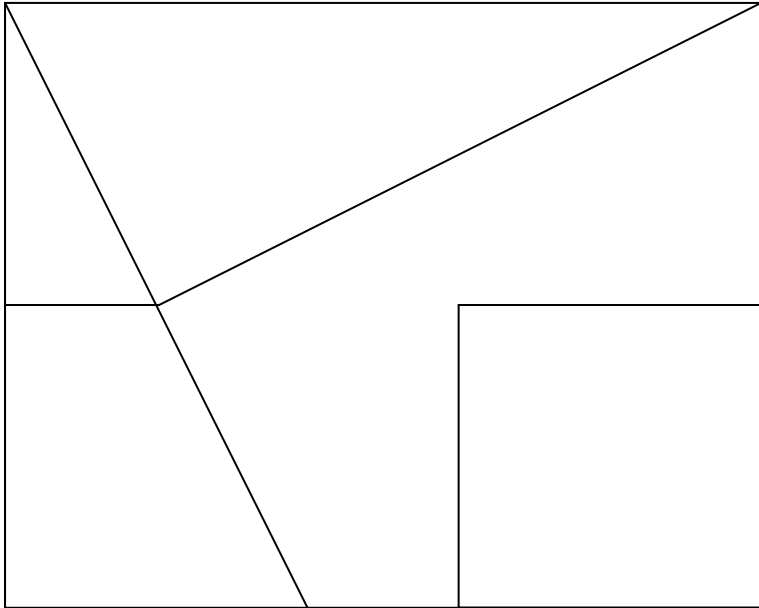
Up the Down!!

Jan's Feb Puzzle

Jan Winter

Cut the 5 pieces out. Can you rearrange them, using all 5 pieces, to make:

- A right angled triangle
- A parallelogram
- A cross
- A trapezium
- A square?



Happy Birthday, Robin!

Peter Floyd

Many people will remember Robin Bush, whose parents used to live at Tockington Court; who later built Tockington House next door, where Robin lived and where the church fete was held for many years.

He was a cheerful member of the St Mary's Church Council and a church warden who worked hard to keep the building in good order.

Robin later lived in a cottage on Tockington Green until he became disabled and he now lives at St Monica's in Bristol, though he still enjoys visiting Olveston from time to time.

He will be 80 in January and since he receives Meeting Point, we wish him a very Happy Birthday!

A Brownie's Sleepover @Bristol

By Rebekah Vizard, age 9

On Saturday 21 November 2015, first Olveston Brownies went to the @Bristol sleepover. We went by train from Severn Beach to Bristol Temple Meads and walked from the station to the M-Shed; it was dark by the time we got there. One of my favourite exhibits there was a war time Anderson Shelter, it had sound effects of an air raid. We then walked to the Millennium Square to have our tea. I had a tuna roll, ready salted crisps, orange and a Refresher. We sat on a bench near the ice rink and some very pretty Christmas lights.

When we got to @Bristol we went upstairs in the lift to unpack, I was sleeping next to Leah & April. Brown Owl gave us 2 stickers and a band to put on, this had a barcode on it so we could save our progress on a website, and when we went home we could see everything that we had done. After a short time looking at some of the exhibits Brown Owl collected us together and we went upstairs for a talk about 'Space'. They told us about explosions, rockets and what would happen if you were in Space and needed the toilet!

Next we went to see some other exhibits. There was a flour grinder, a photo booth, milking a cow, water works, a slow motion jump and a do your own weather report activity. My favourite thing was a bit like a brain competition. The first thing you had to do was jump at the same time as your partner, then you had to scan your hand, next you had to wind a wheel really fast, some buttons lit up and you needed to press them really fast. Finally, there was a race to the end, scan your hand again and then watch it online. After this we headed to the Planetarium, we put on 3D glasses and went into a large dome. We looked up to the sky and there were lots and lots of stars, then we zoomed in to some planets. The man that was doing the talk showed us The Pegasus, dragon and other historical people. Soon after this it was time for bed at 11:00pm!

The next morning it was lights on at 6:15am. After breakfast we did an activity where we made rockets out of a tube, an A4 piece of card and some sticky tape. We fired our rockets off a pipe attached to a bottle, we stamped on the bottle to fire the rockets and tried to aim for a box hanging from the ceiling. It was then time to pack up and leave for the train station. I had a great time at @ Bristol. I hope we go again. Thank you to all of our leaders for giving up their time and making it a wonderful experience.

Movies at St Mary's: Feb Trevor Anderson



Here at **St Mary's Movie Club** in Olveston we show films for the 'grown-ups' on the first and third Monday evenings of each month and for 'children of all ages' every Monday morning during school holidays. As I'm sure all readers now know, everyone is welcome to all the films (you don't need to be a Movie Club member) and there is no need to book.

This month we have another *ExtraSpecial* for you. And this year our March Monday Movie will be on **Feb 29th**! Read on to find out more...

MONDAY MOVIES (*Recent releases and popular classics*)

Mon 1st Feb at 7.30pm. Against the backdrop of America's sub-prime mortgage crisis, this is a troubling look at corruption in the housing sector, when temptation knocks. A drama of great power and subtlety, it manages to talk about one of today's most pressing and troubling issues without getting preachy or overbearing. (2015, Cert 15)

Mon 29th Feb at 7.30pm. (Our 'March' Monday Movie!) Despite just two albums, she was one of the biggest music icons in British history. With a voice oft described as a combination of Billie Holiday, Dinah Washington and Sarah Vaughan, she was a pop star with soul. But while her music made her a star, her chaotic personal life stole headlines. This is her story in her own words and features unseen archival footage and unheard tracks. (2015, Cert 15)

MONDAY MOVIES EXTRA (*Quality 'non-mainstream' films*)

Mon 15th Feb at 7.30pm: This *ExtraSpecial* is a beautifully acted drama from France. A successful artist, (Daniel Auteuil) weary of Parisian life and on the verge of divorce, returns to the country to live in his childhood house. He needs someone to make a real vegetable garden again out of the wilderness it has become. The gardener (Jean-Pierre Darroussin) happens to be a former schoolfriend. A warm, fruitful conversation starts between the two men.... *In French with English subtitles.* (2007, Cert 12)

CHILDREN'S MOVIE CLUB (*Every Monday morning in the hols*)

Mon 8th Feb at 10.00am: A Disney animated feature about the emotions inside an 11-year-old girl's head - Joy, Sadness, Fear, Disgust and Anger - and how they work together to help her negotiate moving house and starting at a new school. (2015, Cert U)

Refreshments available at all the shows, plus licensed bar in the evenings. Admission is free although a **donation** at the end towards expenses is always appreciated.

For copyright reasons we can't name the films here, but if you **join the Movie Club** we'll send you titles and full details by email. It costs nothing to join – just email me at trevoranderson@btinternet.com.

The early years of Bristol Zoo

Wednesday, 3 February 2016, 7.30pm, Olveston Methodist Church

How was Bristol Zoo stocked with wild animals in the early years after its opening in 1836?



Dr Andy Flack recently obtained his doctorate at the University of Bristol by finding out exactly that!

Expect tales of individual enterprise, use of imperial trade routes – and some behaviour which would not meet modern ethical standards...

His talk is entitled: **Bristol**

Zoo, the Wild Animal Trade and Imperial Networks in the 19th Century.

This meeting is open to everyone and all are very welcome. £2 for a single meeting, payable at the door. You can see the rest of the programme here:

www.olvoston.com/historical-society

Free Forest Friday Sessions at Stepping Stones

Does your child get fed up with being indoors in the winter? If so then why not send them to Stepping Stones on Friday mornings for our new forest session from 9am - 12.00? Forest activities will include climbing and hiding, den making, mud painting, bug hunting, crafts and other activities. Songs, stories and snack take place in our den. Safety is an important issue; the children are taught the rules before entering the woods and the leaders have forest skills training. Having been awarded some funding we are able to offer **3 free sessions in February/March for any new child aged 2 - 4**. If you would like to know more or would like your child to experience for themselves, free of charge, the excellent outside learning opportunities we offer, please contact Gill on 07853 173221 or email gillpowell1961@hotmail.co.uk.

Olveston Parish Hall

Parish Fish and Quiz

The Annual Fish and Quiz will be held in the Parish Hall on **Friday 26th February 2016**

Time: 7.30 for 8.00

For tickets contact: 01454 610388 or email: pat@savageassociates.co.uk

Annual General Meeting

This will be held on **Thursday 17th March (St Patrick's Day!)** in the **Parish Hall at 7.30**. Wine and nibbles will be available after the Meeting. We look forward to seeing you!

Police report for December

The following crimes occurred in December:

- Burglary at Old Down Cricket Club where unknown offenders gained entry, causing damage but no property was stolen.
- Burglary at a building site in Olveston where offenders damaged a container to which it is believed they were trying to gain access.
- Burglary at a residential property in Hill, where unknown offenders were disturbed by the occupant; an antique clock was stolen in the process.

*PCSO 9317 Kelly Dimery
CN212 Severn Beat
Tel: 0117 945 5902*

Dog Walkers: a Special Request

Parents at Olveston School recently noticed that all along the pavement and outside school was a lot of large dog poo. The thought of children walking through this, then sitting cross-legged on the carpet in classrooms is not pleasant! And it's not fair to expect the school's staff to have to clear it up.

So: can dog walkers please be particularly careful in this sensitive locality?

Thornbury in Old Photographs

A Thornbury & District Museum talk at the United Reformed Church, Chapel St. (opposite the Wheatsheaf), Wednesday 17 February, 7.30pm



Looking at old photographs of familiar places can be eye-opening and often gives rise to all kinds of stories and reminiscences.

Meg Wise will be showing slides of some of the town's old buildings and streets, talking about their history and describing how they have changed over the course of time.

Tickets for the talk are £5 (includes refreshments) and they must be **booked in advance** from Thornbury & District Museum: phone 857774 or email enquiries@thornburymuseum.org.uk. Alternatively, call in at the museum once it re-opens on 2 February. See below for opening times.

Check out this and much more on www.thornburymuseum.org.uk

What links...

...a single lady from Oldbury-on-Severn, a world speed record-breaker, a bluebird and the lid of an old-fashioned toffee tin?

The answer can be found in a new museum exhibition: **"History in the Making"**, featuring items from the Museum's collection that were manufactured, sold or used in the Thornbury area, from bricks to commemorative glassworks and ceramics – and that toffee tin lid.



As a market town in an agricultural area, there were many skilled tradesman and craftsmen working here: for instance, saddlers, carpenters, builders, tailors and bonnet-makers. The exhibition also features a patchwork quilt made in Aust around 1850 (an Aust Quilt, not the now-famous Thornbury Quilt!) which was recently donated to the Museum, along with a copy of a diary which has proved to be a mine of interesting information about several local families in the 19th century. The Museum re-opens to the public on Tuesday 2nd February and the exhibition will run until the end of April. Free. Tues to Fri, 1pm to 4pm, Sat 10am to 4pm, from Tues 2 Feb onwards.

Women's World Day of Prayer

Irene Parsons

At the last count I was surprised to see that I have been fortunate to have visited more than 78 countries. Although every country has its own customs, I realise through talking to women all round the world that all our desires are the same. We want peace, food for our families, good education and health.

It's so exciting to know that annually Christian women all round the world are praying for these same things on the first Friday in March. This year's service has been written by women from Cuba. Come along to our service at The Oasis Church, Old Down on 4 March at 10.30 am and join with us and women worldwide.

If you happen to be abroad on that day, why not join in locally wherever you are, or if you're at work then reflect for a moment. Do you too, want any of these things for your world?

"Annie"

Richard Newley

The Parish Players' 2016 musical production of "Annie" opens on **Wednesday February 10th**. If you haven't got your tickets already, seats may still be available for the Wednesday, Thursday, Friday and Saturday performances at **7.30pm in the Parish Hall** (£10 for adults, £7 for children). In addition there is a preview evening on Tuesday 9th February.

Don't miss out on this wonderful musical, set in 1930's New York! Please phone Richard and Jenny Newley at the Box Office on **01454 202011** for information, to check availability and to purchase your tickets.

Cancer Research UK Quiz

Once again, by popular request, Thornbury and District Cancer Research UK Committee are holding a **QUIZ NIGHT with Fish and Chip supper on Friday 18th March** at Manorbrook Primary School, Thornbury, commencing at 7.30pm sharp - so please be there at 7.15pm.

Tickets are priced at £10 per a person which includes both admission and a fish and chip supper.

There will be a Licensed Bar and an excellent Raffle.

Tickets available from Gill Blackborough on 07866580608 or any Committee Member. Don't delay since tickets for this event will be quickly sold out !!

Olveston & Tockington W.I.

January's meeting saw a talk by Emma Slade, a policewoman in Bristol, who gave an insight into her work involvement with street workers and human trafficking - an international problem which is increasingly coming to the attention of all sections of the public. It was an extremely interesting and insightful account, which gave members a view of this important area of policing.

Our meeting on **16th February, 7.30pm at the Parish Hall**, has a talk on **Midwifery**, an area of life touched by many members of the W.I.!! Ladies, do come along.

St Peter's Hospice - Annual Quiz

St Peters Hospice Severnside Support Group would be delighted to welcome you to the Annual Quiz on **Friday 4th March at the Armstrong Hall commencing at 7.15pm**. The quiz team should be made up of four people, an excellent supper is served and a very good raffle takes place. The cost is £28.00 per table of four.

For further information and to reserve your table please telephone Mary on 01454 412567, thank you.

Please come along and support St Peters, your local Hospice.



Swimarathon reminder



The **Rotary Club of Thornbury's Swimarathon** will be taking place at the Thornbury Leisure Centre on the evenings of **4th, 5th and 6th March 2016**.

We need your help! Please enter a team!

We will be swimming to the Caribbean sound of the Castle School Steel Band and the vocal support of many excited onlookers! It's a great atmosphere. You don't have to be fast, you don't have to be a great swimmer and you don't have to swim on your own. In fact, you can have as many as 6 in a team, each taking it in turn to swim lengths. Each session is 55 minutes. Once you've finished you'll receive your personal certificate to prove you did it!

For 2016 we are delighted to be able to support 2 Bristol charities, **Jessie May Children's Hospice** and **The National Eye Research Centre** as well as local

charities and good causes. Over £12,000 was raised in 2015 through the Swimathon and this year we're hoping that even more teams will be taking part in this family event.

If you fancy entering a team and taking the plunge, please do not hesitate to contact Derek Baker by email: swimathon@thornburyrotary.org or mobile: **07984 949827**. Team entry forms, sponsorship forms and posters are available at: www.thornburyrotary.org/swimathon

Aladdin

The Thornbury Musical Theatre Group will be performing 'Aladdin' at the Armstrong Hall in Thornbury during half term from **Wednesday 10th to Saturday 13th February**.

Directed by our very own Emily Costa, this very original and funny production provides all the necessary ingredients for a first-class and spectacular pantomime of the famous oriental rags to riches tale.

Bursting with comedy and visual business, courtesy of Widow Twankey, Wishee Washee and the two Chinese Policemen (Yu-Dun-Wong and Hu-Dun-Pong), this sensational production provides ample opportunity for audience participation, slapstick and traditional pantomime fun. With a vibrant mix of singing and dancing, this is the perfect pick-you-up for mid-February, suitable for all ages.

If you're ready to embark upon an unforgettable journey into the Land of the Magic Lamp where Aladdin falls in love with the beautiful Princess, let this "in-genie-ous" pantomime make your wish come true!

Performances start at 7.30 pm nightly and there will also be matinees at 2.30 pm on the Friday and Saturday. Tickets are bookable online at www.tmtg.org.uk. £12 Adults, £10 Concessions and a family ticket for 4 costs £36. Group discounts of 10% can be arranged via our Box Office for 10+ seats. For enquiries call Angie at the Box Office on 07516 270140. Tickets are also available at Lisa Costa Residential Sales and Lettings at 53 High Street, Thornbury.

For more information about 'Aladdin' and our group generally, take a look at www.tmtg.org.uk or contact us by e-mail at membership@tmtg.org.uk. You can also follow us on Facebook.

A Forgotten Landscape - Update

An earlier Meeting Point introduced 'A Forgotten Landscape' (AFL), a project funded by the Heritage Lottery Fund and run through South Gloucestershire Council. AFL aims to work with local people to conserve, restore, enhance and explore the natural and cultural heritage of the Lower Severn Vale Levels.

AFL run workshops, talks and volunteer projects. This article describes some forthcoming talks, but there is much more on offer, as you can find out at www.aforgottenlandscape.org.uk, or by talking to Katie Scaife on 01454 863043.

AFL has a programme of Tuesday Talks, featuring a speaker or speakers on the first Tuesday of every month from February to April. Talks last about an hour, and take place at **7:30 pm at the White Hart, Littleton-on-Severn**.

Register for the event via Eventbrite (www.eventbrite.co.uk) and get a complimentary cup of tea, coffee or soft drink when you arrive!

Talk 1: Tuesday 2 Feb: 'Amazing Migrations'

Ed Drewitt, naturalist, broadcaster, and wildlife detective will give an illustrated talk looking at the amazing bird migration along the river Severn. Every winter thousands of birds arrive on the Severn Estuary. Discover the amazing facts behind where have they come from and where they go to when spring arrives. Come and find out more at what promises to be an entertaining evening.

Talk 2: Tuesday 1 March: 'The Uncertain Severn'

Join us for an intriguing evening exploring the changeable Severn, the impact it's had on the landscape in the past and what we might expect in the future. John Morgan, Researcher at the University of Exeter, will talk about historical flooding in South Gloucestershire and how people dealt with flooding in the past while Pru Foster, Research Fellow from the University of Bristol's Cabot Institute will get us all imagining what might happen along the Severn in the future. What will happen as the climate changes? Come along and share your stories of the Severn past and present. This promises to be interactive, thoughtful, and lively!

Talk 3: Tuesday 5 April: 'Orchards, apples, and the Noble Chafer beetle'

Traditional orchards, once common along the Severn, are wildlife havens as well as having historical and cultural importance. Adam Bates (Nottingham and Trent University) has been studying orchards and in particular searching for one small green beetle – the Noble Chafer. Rare at the best of times, mysteriously only found so far in orchards north of the Severn (Herefordshire, Worcestershire, and Gloucestershire) but never on the south side. Find out what makes these special places and this beetle so fascinating.



Northavon Youth Theatre Company

40 Years - Where Did They Go?

In 1975, members of Thornbury Arts Festival Committee came up with the novel idea of including a dramatic performance by youngsters as a regular feature of the annual Arts Festival, so the Northavon School of Drama was established and those aged 6 to 16 years were invited to audition to join the School, where they were given guidance and tuition in Dance, Singing and Acting, culminating in a musical production, under the banner of the Northavon Children's Theatre Company, funded and staged annually at Easter by TAF. With Jenny Davies as the first Principal of the School, 1976 saw its inaugural production of *The Fantastic Mr Fox*, bringing author Roald Dahl to Thornbury! But when career promotion for Jenny's husband and a move to Cornwall intervened, her place was filled by Linda Evans, a local Drama teacher and trained actress. Shows such as *Beauty and the Beast*, *The Lion*, *the Witch and the Wardrobe* and *Toad of Toad Hall* were very successful, but following the 1982 production of *The Wizard of Oz*, Linda decided to make the Northavon School of Drama and its productions completely independent of Thornbury Arts Festival, so the community Drama School, one of the very first of its kind in the South-West and even the United Kingdom, began a new chapter, with keen amateur performer and teacher of English & Drama: Lyn Bedford joining Linda as Choreographer and Assistant.

1986 saw another change, with Linda stepping down and Lyn taking on the rôles of Principal and Director, changing the age range to 11 to 18 years and the performance name to the Northavon Youth Theatre Company, offering tuition in all theatrical areas, while endorsing 'life skills' such as team building, development of confidence and concentration, plus opportunities to perform in Musicals, Showcases and Concerts in the community. Lyn is proud to offer "Drama Without Discrimination" to young people from many different backgrounds and often to those with physical and emotional problems, but all are welcome, with the emphasis on friendship and fun!

40 years, 47 productions, (such as '*Carousel*', '*Miss Saigon*', '*Anything Goes*' & '*Les Misérables*'), and 12 theatrical awards later, from March 23 to 26, Thornbury's Armstrong Hall will stage NYTC's 40th Anniversary show, the 1920s riotous romp: ***Thoroughly Modern Millie***. So why not join us in celebrating one of Thornbury's proudest achievements? More next month!
www.nytc.org.uk.

Jazz with Jessica and the Park Row Five

Were you privileged to hear Jessica Radcliffe sing in Thornbury with the National Youth Jazz Orchestra in the Festival or on several occasions in Thornbury since then?

Jessica, originally from Bristol, is a rising star in the highly competitive world of jazz singers. She performs regularly with the National Youth Jazz Orchestra.

We are delighted to welcome her back to Thornbury once again in company with The Park Row Five in a relaxed Jazz Café setting on Saturday 27th February 2016.

You can enjoy an evening of original arrangements of a wide range of jazz classics, blues and ballads from Gershwin and Ellington to masters of Latin jazz and beyond, performed by The Park Row Five with Gareth Williams on saxophone and flute, Rob Bartlett on trumpet, Stuart Potter on keyboard and piano, Ray Loadman on double bass and James Heming on drums, all accompanying Jessica's exhilarating jazz vocals.

It will be an evening of great music in the Armstrong Hall to appeal to all tastes. Finger food will be served in the interval and is included in the price of the ticket. Bar available.

The concert, which is part of the fund raising project in aid of the Armstrong Hall Redevelopment Project (Phase 1) will be held in the **Armstrong Hall on Saturday 27th February at 7.30pm**. Tickets at £12 each are on sale now at Thornbury Town Hall or by phone on 412272.

Yours Faithfully

Revd Helen Webb, St Mary's Olveston

I sit here writing this at the beginning of January, vainly trying to cling on to the remnants of Christmas and New Year cheer before 2016 starts to whip past and before I know it the clocks go forward and it's May Bank Holiday!

If women's magazines are to be believed February is a dismal month with nothing to look forward to – Christmas, New Year and the January sales well and truly over - the only positive thing being the fact it's shorter than all the other months! I actually like February – quite often this is when we get those lovely crisp frosty blue-skied mornings, beautiful sunsets and sometimes the lowering grey skies which threaten/promise snow. It's when the snowdrops

and crocuses start appearing (I know they're all out already this year) and it's like a big deep breath as we move from the darkness and cold of winter to the promise of light and growth in spring.

This February is even more special – it's a Leap Year so we get an extra day – February 29th! We have Julius Caesar to thank for the extra day once every four years and Pope Gregory XIII to thank for keeping it going when he revised the Julian calendar in 1582.

Wouldn't it be great if this extra day wasn't included in the calendar, printed in our diaries after February 28th and before March 1st but the day was given to us to use as and when we wanted to? What would you do with a free extra day? Stay in bed all day? Get to the bottom of the ironing pile? Do those annoying little tasks which seem to hang around on the bottom of your 'to do' list – the dripping tap, sticking door, squeaky floorboard? Empty your work email in-box? Hit the shops? Go to the seaside? Meet up with friends? Crack that tricky level on your favourite game? Clear out your wardrobe? Do something with that forgotten corner of the garden? Plan the summer holiday? Start some meaningful revision? Bake that recipe from 'Bake Off' that you have been meaning to attempt? Sort a few years' worth of photographs? Write those letters? Start researching your family tree? Watch that box set you've had sitting on the shelf for ages?

The list is endless ... but I imagine there are very few of us who would immediately say "spend some quality time with God". By the time we get to February 29th this year we will be half-way through Lent – the time when we remember Jesus spending forty days and nights alone in the wilderness with God, His Father. A time spent preparing for several years of preaching, teaching, healing and introducing people to God while coping with scorn, fear, disbelief and eventually death. Jesus knew he needed 'time out' to spend with God to be effective in what He was called to do. Christians are encouraged to try and spend time with God, at this time of year particularly as they prepare for Easter. Many different people try to have times of reflection and prayer, time spent with God, to enrich their relationship with Him.

What about us? – We may not have the opportunity of a free day to use when we want but maybe we could grab a few hours here and there to spend alone with God, If Jesus found the strength from all those hours spent in God's company to face what He did maybe we might find encouragement and strength from spending time with God too.

Church News

ST MARY THE VIRGIN, OLVESTON

Feb 7	8am	Holy Communion	Rev Philip Rowe
	10am	Holy Communion	Rev P Rowe & Rev D Bone
	6pm	Evensong with Choir	Rev R Bain & Mr D Jones
Feb 10	9am	Holy Communion with Ashing	Rev Roly Bain
Feb 14	8am	Holy Communion (BCP)	Rev David Bone
	10am	Morning Worship with Choir	Elveen Mead & Canon J Poarch
	10am	Breakfast Club	Breakfast Club Team
	6pm	Holy Communion	Rev Philip Rowe
Feb 21	8am	Holy Communion	Rev Roly Bain
	10am	Holy Communion with Choir	Rev P Rowe & Debbie Dewes
	3.45	Back to Front	Paul Harrod
	6pm	Evensong	Mrs Janet Mc Bride
Feb 28	8am	Holy Communion (BCP)	Rev Roly Bain
	10am	Fourth Sunday	Rev R Bain & Richard Atkinson
	6pm	Evensong (BCP) with Choir	Elveen Mead & Rev P Rowe

Information on services correct at time of going to press.

Rev Philip Rowe, 01454 613223; email: office@stmaryssevernside.org.uk

Rev Roly Bain for Baptisms, Marriages & Funerals 01454 616593.

Verger: **Mrs. June Robbins**, 01454 617491

www.stmarysolveston.org.uk/index.html

PRAYER GROUP: Mondays, 2.45pm in the Chancel

WEDNESDAY HOLY COMMUNION: At 9.00am led by the Rev. Roly Bain except 4th Wed when it is at Olveston Methodist Church

Morning Prayer 8.30am daily ex. Wed

CHAPELRY OF ST JOHN, AUST

Feb 14	5.30	Holy Communion.	Rev. Ann Parker
Feb 28	5.30	Evening Service	Rev. Ann Parker

Focal Minister: **Rev Ann Parker**, 01454 632329

e-mail annatdibley@btinternet.com

Church Wardens: **Jon Burnett** 633835 & **Jenn Dickens** 632035

ST MARY DE MALMESBURY, LITTLETON-ON-SEVERN

Feb 7	9am	Matins	Mrs Tracey Black
Feb 21	9am	Holy Communion	Rev Anupama Hansell

Contact Mrs Tracey Black 01454 417660

ST JOHN THE EVANGELIST, ELBERTON

Feb 14	9am	Matins	Sandra Edgerton
Feb 28	9am	Holy Communion	TBA

www.alveston.org/alveston/sthelens-church-alveston

OLVESTON AND TOCKINGTON METHODIST CHURCH

Feb 7	10am	Tock. Ch	Morning Worship led by Mrs Debs Brazier
	6pm	St Andrews.	Evening Worship led by Rev Caroline Carter
Feb 14	10am	Olv. Ch	Morning Worship led by Mrs Rosalie Doyle
Feb 21	10am	Tock. Ch.	Morning Worship led by Rev Ann Parker
Feb 28	10am	Olv. Ch..	Morning Worship with Holy Communion led by Rev Pete Brazier
	6pm	Hanham Ch	Meth. Ch. Circuit Taster Service-Digital Worship-Led by Rev Pete Brazier

NORTHWICK LUNCHEON GROUP: This meets at 12.30pm on Wed. 10th Feb ..
To book your lunch please ring 416528

TOCKINGTON LUNCHEON GROUP meets at 12.15pm in the Swan on Thurs
18th Feb. .. To book please ring 613241 or 612112

COFFEE MORNINGS: Sats 10.30 - 12 noon in the Olveston Methodist Hall.

PRAYER MEETINGS Tuesdays 9.00-10.00 in Olv. Methodist Church.

HOUSE GROUP Thurs 18th Feb at 10.30am at 7 The Green Olveston

THE OLVESTON COMPUTER CLINIC Olveston Methodist Hall

Monday 2-4pm Wednesday 10-12 Friday 7-9pm

Ring 07833 354672 or 07957 433091 for further information.

CONTACT: Rev Pete Brazier Tel 01454 418176,

e-mail pete@thebigfishcafe.co.uk

THE VINE, AWKLEY

The Vine, Pilning Street, Awkley

We meet in a relaxed, informal manner for worship, prayer & conversational Bible studies incorporating Communion, on Sundays at 10.30am and Mondays and Wednesdays at 7.30pm We also visit other Churches and events so please check our Notice Board or contact .

Mike and Barbara Matthews, tel. 07512 917229 or email:
thevine_awkley@hotmail.com

THE OASIS CHURCH, OLD DOWN

Feb 7	6.30pm	Ian Thornley
Feb 14	6.30pm	Paul Ashford
Feb 21	6.30pm	Mike Jenkinson
Feb 28	6.30pm	Tony McQueen

Each Thurs at 7.30pm Prayer & PraiseTime

For further information please contact **Ceri Morgan-Davies** 413043

Paul Ashford, 07774 110 814 or email: Paul@CalebGroup.net

AUST EVANGELICAL CHURCH Family Worship 11.00am

For more details contact **Ann Roberts** 632564.

e-mail ann.roberts@bylanes.co.uk

LITTLETON EVANGELICAL CHURCH

Evening Worship every Sunday at 6pm; for details tel. 413247

RC CHURCH OF CHRIST THE KING, Thornbury -

Sun 8.30am Mass 11.00 Family Mass

Monday-Friday Daily Mass at 10am

Tel 01454 412223 www.ctk-thornbury.org.uk

SOCIETY OF FRIENDS (QUAKERS), Thornbury

Meeting for Worship Sundays 10.30-11.30: The Hanover Room, The Chantry, Castle St. Wheelchair accessible. Children welcome with prior notice.

Local contact: Roger Howell at rogerhowell2@talktalk.net 01454 415035

National: www.quaker.org.uk Bristol area: www.bristolquakers.org.uk

Diary Dates for February 2016

The information given below is believed to be correct as we go to press.

1 st Mon	Computer Clinic every week Monday Movie	2-4pm 7.30pm	MH StM
2 nd Tue	Tockington Toddlers Friends of Daldry Gardens Coffee Morning A Forgotten Landscape 'Amazing Migrations' Talk	9.30-11.30 10.30-12.00 7.30	WR DGCL WHLS
3 rd Wed	Computer Clinic every week Beat Surgery Holy Communion at Daldry Gardens Table Tennis O.P.H.S. Bristol Zoo-Wild Animal Trade	10.00-12.00 10.30-11.15 2.30pm 7-8.30pm 7.30pm	MH OSt DGCL PH OMC
4 th Thu	Thornbury Farmer's Market Coffee Shop Olveston Toddlers	9.00-1.30 9.00-12.00 1.45-3.15	OSt MH
5 th Fri	Thornbury. Carers' Support Group Computer Clinic every week Quiz O.P.T.A. (Twinning Assn.)	1.00-3pm 7.00-9.00pm 7.30pm	Chy MH PH
6 th Sat	Coffee Morning	10.30-12.00	MH
7 th Sun	Bingo every Sun at Sports & Social club	7pm	
8 th Mon	Children's Movie	10.00am	StM
9 th Tue	Tockington Toddlers Friends of Daldry Gardens Coffee Morning Memory Café Aust Parish Council	9.30-11.30 10.30-12.00 10.15-11.45 7.30pm	WR DGCL TMH EVH
10 th Wed	'Annie' 'til Sat 13th	7.30pm	PH
11 th Thu	Coffee Shop S. Gos Ladies Lunch Club in Almondsbury Thornbury & District Flower Club Demo	10.00-12.00 12.15 7.30pm	OSt OSH TMH
13 th Sat	Coffee Morning Coffee Morning	10.30-12.00 10.30-12.00	MH AVH
15 th Mon	Monday Movie Extra	7.30pm	StM
16 th Tue	Tockington Toddlers Friends of Daldry Gardens Coffee Morning W.I., 'Midwifery'	9.30-11.30 10.30-12.00 7.30	WR DGCL PH
17 th Wed	Severn. Vale. Flower Club A.G.M. & Demo. Table Tennis Jazz at the White Hart Olveston	1pm 7-8.30 8.30pm	AH PH

18 th Thu	Thornbury Farmer's Market Coffee Shop Olveston Toddlers	9.00-1.30 9.00-12.00 1.45-3.15	OS+ MH
19 th Fri	Th. Picture House 'Belle'	7.30pm	CH
20 th Sat	Coffee Morning	10.30-12.00	MH
23 rd Tue	Tockington Toddlers Friends of Daldry Gardens Coffee Morning Memory Café Olveston. Parish Council meeting	9.30-11.30 10.30-12.00 10.15-11.45 7.30pm	WR DGCL TMH AP
24 th Wed	Table Tennis Alv. Local History Soc. Disasters of Brunel	7.00-8.30pm 7.30pm	PH AMC
25 th Thu	Coffee Shop Olveston Toddlers	9.00-12.00 1.45-3.15	OS+ MH
26 th Fri	Parish Hall Fish and Quiz	7.30 for 8.00	PH
27 th Sat	Coffee Morning	10.30-12.00	MH
28 th Sun	Aust Quiz Night at Boars Head	7.30pm	
29 th Mon	Severn. Vale. Flower Club Practice Monday Movie	1.30pm 7.30	AH StM

Looking ahead to March

1 st Tue	AFL Talk 'Uncertain Severn'	7.30	WHLS
4 th Fri	World Women's Day of Prayer	10.30	Oasis

KEY: **AC** Aust Church; **AH** – Armstrong Hall; **AMC** – Alveston Methodist Church; **AMH**- Alveston Methodist Hall; **AP** – Alexandra Pavilion; **AVH** – Aust Village Hall; ; **CH** – Cossham Hall; **Chy** – Chantry ;**CS** Castle Sch.**CTK** Christ the King **DGCL** – Daldry Gardens Community Lounge; **EVH** – Elberton Village Hall;**JH** Jubilee Hall **LVH** Littleton Village Hall **MH** – Olv.Methodist Hall;**OMC** Olv Meth Ch **OS** – Olveston School; **OSt** – Olveston Stores OSH Old Sch. Hall Alm; **OV** – Olveston Vicarage; **PH** – Olveston Parish Hall; **StM** St Mary's Church, Olv.; **StMA** Almondsbury Church **StMT** St Marys Thornbury ;**TCh** Tockington Chapel **TBCh** - Thorn Baptist Ch.; **TMH** – Thorn. Meth. Hall; **WHLS** – White Hart, Littleton-on-Severn ; **WR** – Wesley Rooms.

Contact details for any clubs or organisations in the Meeting Point area can be found in the Meeting Point Directory on the community website: www.olvestonandaust.com. If you would like to update your organisation's details, please email: meetingpointsecretary@olvestonandaust.com

Advertisements Neither Meeting Point, its editor, nor management committee accept any responsibility or give any guarantee in case of any dispute or claim as to quality, condition or delivery of commodities or services advertised in this magazine. It is not to be taken that publication implies recommendation. It is always advisable to check prices when ordering goods or services.

Views expressed by contributors are not necessarily those of the editor or Meeting Point magazine.

Copyright Meeting Point 2016. Copyright remains with the author(s) and Meeting Point. No part of this publication may be reproduced or transmitted in any form without the prior permission of the copyright owners.

Meeting Point is printed by **Bristol Business Centre**.