

# Meeting Point



December 2023

## TRUE BLUE TAXIS (OLVESTON)

Local Taxi Company



Honest, Reliable and Safe

Cash or Card Payments



Mobile:

**07967 042794**

## Top-to-Tail Housekeeping

- Professional
- Dependable
- Comprehensive service

Trading  
Standards  
Accredited

**Felina  
Contract Cleaning**

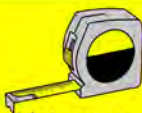
01454 201562  
07790 050187  
cleaning@felina.biz  
www.felina.biz



## Local Carpentry, Building & Plumbing

No Job Too Small

- Painting & Decorating
- Maintenance & Repairs
- Kitchen/Bathroom Fitting
- Static Home Repair & Refurbishments
- Handyman Service



For More Info Visit:

[alvestonbuilders.co.uk](http://alvestonbuilders.co.uk)

Over 40 Years of Experience ✓ Card Payments Taken ✓

Contact Mike

Tel: 01454 614887  
Mobile: 07932 153300/07711 411075  
Email: [enquire@alvestonbuilders.co.uk](mailto:enquire@alvestonbuilders.co.uk)

## THORNBURY Chiropractic CLINIC

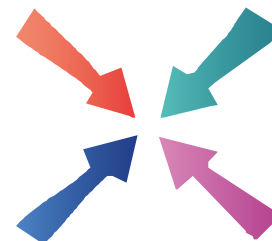
[www.thornburychiropractic.co.uk](http://www.thornburychiropractic.co.uk)

Wishing you a Merry  
Christmas and a Happy New  
Year from all the team

**Chiropractic  
Acupuncture  
Holistic Massage**

Open Monday to Friday

**01454 418259**



# Meeting Point

**Volume 48, Number 3, December 2023**

The community magazine for the villages of Olveston,  
Tockington, Old Down, Lower Hazel, Awkley, Ingst, Aust, Elberton and Littleton upon Severn

## From the Editor

This month's cover photograph was taken by Les Harper in 2021 and shows Christmas trees in St Mary's Church, Olveston. Which is, of course, a timely reminder of the Christmas Tree Festival that is being held there this month, from the 2<sup>nd</sup> to the 9<sup>th</sup>. Do go along if you can and have a look at this year's display.

We have got details of various Christmas events in the area this month – such as carol singing both on the Green in Tockington and in the White Hart, Olveston, the Advent Windows trail around the villages and a very festive themed meeting of the Olveston Parish Historical Society. We have also put together details of the Christmas opening hours – where they are available - of a number of local businesses. We hope you will find this useful.

All of us who work together to produce and deliver Meeting Point would like to take this opportunity to wish readers a Merry Christmas and a Happy and Healthy New Year.

Meeting Point Founded in 1976 by the Anglican and Methodist churches in Olveston, near Bristol.

### EDITOR:

Marelin Orr-Ewing  
Courtlands, Olveston  
Bristol BS35 4DU  
Tel: 01454 610081  
[meetingpointeditor@gmail.com](mailto:meetingpointeditor@gmail.com)

### ASSISTANT EDITOR:

Angela Williams  
Ashlea, Haw Lane  
Olveston  
Bristol BS35 4EG  
Tel 01454 612850  
[meetingpointmagazine@gmail.com](mailto:meetingpointmagazine@gmail.com)

### ADVERTISING:

Bernard Amos  
Tel: 01454 620388  
[meetingpointadvertising@gmail.com](mailto:meetingpointadvertising@gmail.com)

### TREASURER:

John Clayton  
[meetingpointtreasurer@gmail.com](mailto:meetingpointtreasurer@gmail.com)

Publication date  
1st of each month  
Material for January 2024  
to the Editor or Deputy Editor by  
4<sup>th</sup> December 2023

Meeting Point magazine and Meeting Point Directory are online at the  
Community Website: [www.olvestonandaust.com](http://www.olvestonandaust.com)



# Thornbury Motors

- New and Used car sales
- Servicing, repairs and MOTs on all makes



thornburymotors.co.uk 01454 412535



Grovesend Road  
Thornbury  
Bristol  
BS35 2EF



## SAVAGE ASSOCIATES

Accountants·Business Advisors  
Corporate & Personal Tax Consultants

The Coach House, Aust Road  
Olveston, Bristol BS35 4DE  
Tel 01454 610388 Fax 01454 201541

for an initial consultation please contact:  
edd.savage@savageassociates.co.uk

## Vicarage Farm Holistic Therapy Centre

Bringing balance back  
into your life.  
Offering a wide range of  
Holistic Treatments.



### Hypnotherapy

A safe and effective treatment: to  
remove stress, anxiety, depression  
and phobias. Allowing positive and  
powerful changes in your life.

Tel 01454 614390  
www.vicaragefarm.org

## Message to the Parishioners of Olveston, Tockington and Old Down

The Parish Church of St. Mary's Olveston has been the spiritual heart of our villages for centuries. The building is open daily during daylight hours for people to find a quiet place to meditate or pray. It is also much used for family occasions such as weddings, christenings, and funerals. The community uses it for secular and social activities such as concerts, quizzes, movie nights and exhibitions, plus it has strong links with the nearby primary school. The graveyard is still in use and is a haven for wildlife.

With the New Church Year starting on Advent Sunday 3<sup>rd</sup> December, the Parochial Church Council is nominating it also as 'Gift Sunday' and is asking parishioners to consider how they might help keep this beautiful Church running and active. These are challenging times, with inflation recently at levels not seen for many years. In the light of the continuously increasing cost (typically £7,000 per month) of maintaining St Mary's mission and the building in which it is based, parishioners are invited to find ways of supporting it into the future.

If you are able to help us in whatever way works for you, for example with our planned giving scheme which can be gift aided, please contact David Prothero (Church Treasurer) by email [diprothero@talk21.com](mailto:diprothero@talk21.com) or leave a letter addressed to him or myself on the table by the Church entrance.

With many thanks  
Reverend David Moss (Vicar) 01454 415190

## Pilot Whale Research



Local resident Dan Lewis-Leaver, and his band, will be back at St Mary's Olveston on December 2nd. After their success playing live at the church last year, the six-piece band return to play a Christmas gig with some new songs and old Christmas cover versions. With their blend of ethereal folk music, the band will play two 45 minutes sets, starting at 7.30. Entry is free, with a paid bar and with welcome donations to the church.

<https://pilotwhaleresearch.bandcamp.com/>

**D. YOUNG**  
GARDEN SERVICES  
*Fully Qualified with over 16 years Experience*  
Grass Cutting Hedge Cutting Turfing Fencing  
General Landscaping

Tel: 01454 416206 Mob: 07545 131488  
Email: d.younggardenservices@hotmail.com

**MD Aerials**  
Call Michael Dagger  
T: 01454 418 341 M: 07817 304 236

Freeview – Freesat – Sky – DAB Aerials

Wall mounting LCD & Plasma  
televisions setting up & tuning

mikemdaerials@gmail.com  
www.mdaerials.co.uk

**T. EDWARDS PLANT**  
Digger and Driver Hire

- Site/garden clearance
- Footings
- Drainage/soakaways
- Driveway preparation
- Stump removal
- Fencing & turfing
- Narrow access equipment

Price or day work t: 07900 372349  
t.edwardsplant@gmail.com  
CPCS/CITB qualified & insured

**Guitar & Piano Lessons**

Local lessons for children & adults  
beginners to advanced

Contact Max & Andy  
max@crotchfactory.co.uk 07859 912 438

Ukulele, Keyboard & Recorder lessons also available

**S.J FARR**  
KITCHEN FITTING  
SERVICES

Mobile: 07915673649

Our Associated Services Include:

- Plumbing
- Wall & Floor Tiling
- Decorating
- Plastering

City & Guilds Qualified

**Geoff Gulliver**  
Carpentry & Joinery, Littleton  
ALSO  
UPVC Doors, Windows and  
Conservatories. For a very  
competitive **FREE** estimate

**Ring (01454) 414947**

## News from St. Mary's

Debbie Harris

### Salvation Army Concert

Sunday December 3rd 2pm

We are delighted to welcome the Salvation Army band from Easton again this year for a Christmas concert. This will also be combined with our toy service. Donations of new unwrapped toys will be appreciated and the Salvation Army will distribute them to deprived children at Christmas. We look forward to welcoming you!

### Carol singing in the White Hart

Friday December 22nd 9pm

This is always a great evening led by the choir. Come along for a sing! Donations to charity

We look forward to seeing you at our services over Christmas. See details in the Church News section of this magazine and on our website.



## Advent Windows

Look out for the living advent calendar. Each day in December a new window will be lit up and stay lit until Christmas Day. A huge thank you to everyone who has designed one and we hope you enjoy them.

Here is where they are:

1. Waypoint, New Road, Olveston
2. 19 The Green, Olveston
3. Lavender Cottage, Vicarage Lane, Olveston
4. Holly Cottage, New Road, Olveston
5. Travalan, New Road, Olveston
6. 2 Bramley Close, Olveston
7. 2 Elberton Road, Olveston
8. Hawthorn Cottage, Haw Lane, Olveston
9. 14 The Crescent, Old Down
10. Hollywell House, Haw Lane, Olveston
11. Church Hill House, Vicarage Lane, Olveston
12. Corner Cottage, Elberton Road, Olveston
13. The Wesley Rooms, Tockington
14. Sedgely House, The Street, Olveston
15. 12 Laxton Close, Olveston
16. Foxleaze, Haw Lane, Olveston
17. 21 Orchard Rise, Olveston



**Phoenix Flooring Limited** 

**DISABLED ACCESS**

**Finance Available**  
Buy now, pay monthly  
Provided by **iDeal Finance**

**RESIDENTIAL & COMMERCIAL FLOORING SPECIALISTS**

Carpets • Luxury Vinyl Tiles • Laminates  
Engineered Wood • Room Size Remnants  
Vinyls • Artificial Grass

**CASH & CARRY** **OPEN TO THE PUBLIC AND TRADE**

Tel: 01454 620707  
email: [enquiries@phoenixflooringltd.co.uk](mailto:enquiries@phoenixflooringltd.co.uk)  
[www.phoenixflooringltd.co.uk](http://www.phoenixflooringltd.co.uk)

 **Unit 15 Hemingway Business Centre**  
Walker Way, Thornbury, Bristol, BS35 3US

18. Eastcombe House, Haw Lane, Olveston
19. 1 Orchard Rise, Olveston
20. 19 Orchard Rise, Olveston
21. Honeysuckle Cottage, New Road, Olveston
22. The Cottage, New Road, Olveston
23. 12 Orchard Rise, Olveston
24. St Mary's Church, Olveston

## Table Tennis

Wednesday Evening Adult Table Tennis at Olveston Parish Hall.

We are looking for new faces to join our 7pm - 8.30pm table tennis sessions. These are fun evenings, and we welcome players of all levels. We have three tables so we can play doubles or singles. A very good way to improve your fitness. Please contact Jeanette or John Treby on 01454 202319

## 'Concorde - First to Last' A Film Tribute

Concorde Alpha Foxtrot, the last to fly, landed at Filton on November 26<sup>th</sup>, 2003, and now two local residents, Bill Morgan, of Tockington, and Lindsey Henniker-Heaton, of Olveston, have joined a group of enthusiasts, led by the current Sir George White, to sponsor a definitive film to mark the 20th anniversary of this event.

'Concorde - First to Last' uses 150 minutes of rare archive footage to tell the complete story of the western world's first and only supersonic airliner, from its inception in 1956 until the final flight, sharing interviews with key players in the project, including test pilots, engineers, and shopfloor workers.

The film would make a great Christmas present for Concorde enthusiasts and is available as a DVD from the Aerospace Bristol museum and online shop – [www.aerospacebristol.org](http://www.aerospacebristol.org) - with an HD stream version available from [www.bellevuefilms.co.uk](http://www.bellevuefilms.co.uk) Bill (01454 613442) also has a stock of the DVDs if you wish to collect one.

## Alveston Gardens Association

Monday 4th December 7.30pm, Jubilee Hall, Alveston  
Pest and Disease Control without the use of Chemicals, with Roger Umpelby



- General Building
- Carpentry
- Extensions
- Conversions
- Listed Buildings
- Kitchen Installations



**CONTACT**  
TEL: 07414801910  
EMAIL: RJCConstruction2@gmail.com

Find us on **facebook**



1 Quaker Lane,  
Thornbury  
BS35 2AD

Local independent family funeral directors  
for over 50 years

Specialists in bespoke funeral services, burials,  
cremations & pre-paid funeral plans

Call 24hrs 01454 418 779 • [www.funerals.uk.net](http://www.funerals.uk.net)



**COMPANION  
AND  
DRIVING SERVICE**

**Now taking bookings in your area!**

- For people of all ages unable to drive but wish to remain independent
- Supported trips to the doctor, hospital, shops, bank, hairdresser, vet, etc.
- Social outings, holidays, help at home and much, much more
- DBS checked and First-Aid trained
- Dementia friendly
- Wheelchair Accessible Vehicle
- Fully Licensed

To book your Daisy  
**07951 079 558 / 0333 014 6211**  
[northbristol@drivingmissdaisy.co.uk](mailto:northbristol@drivingmissdaisy.co.uk)  
[www.drivingmissdaisy.co.uk](http://www.drivingmissdaisy.co.uk)

**Top quality Nursing and Residential Care**



**Beech House**

Beech House Care Home provides excellence in all aspects of care for all our residents, offering the best in nursing care for the elderly and residential care for people with a diagnosis of dementia.

Our unique care service includes:

- beautiful gardens
- purpose built homes with 24/7 air circulation
- spacious rooms and wide corridors
- top quality chefs
- television with DVD and telephone in each room
- wheelchair provision at no additional cost
- high technology baths and walk-in showers
- regular minibus trips
- programme of interesting and stimulating activities





RECENTLY RATED  
**Outstanding**  
by Care Quality Commission

To arrange a visit, telephone **01454 412266**  
For more information see [www.bristolcarehomes.co.uk](http://www.bristolcarehomes.co.uk)

**Bristol Care Homes**  
providing a unique care service



## December's Movie

Put aside all your preconceptions and immerse yourself in the biggest box office film of 2023. It's not what you think, in fact it is a film containing many ethical discussions – not the least being about patriarchy in true life.

A (famous) doll living in her own perfect world finds the need to transfer into the real world, bringing her boyfriend with her. Here she finds out that it is nothing like the continual sunshine, fun, gaiety, and 'pink' of her original life.

This is a film which touches upon every human emotion – happiness, sorrow, pain, love, and doubt – and deservedly pulled in more cinema followers in 2023 than any other film.

See it for yourself in St Mary's Church, Olveston (this is a community event and admission is free, though donations are always welcome) on Monday 4<sup>th</sup> December.

Doors open at 7pm with coffee/tea and a licensed bar and the film starts promptly at 7:30pm.

NB. Our licensing agreement does not allow us to name the film.

## First Friday Community Café



The First Friday Community Café at Tockington Chapel takes place between 10.00-12.00 on the first Friday of the month. Forthcoming dates are Friday 1st December, Friday 5th January and Friday 2nd February. Children and dogs are welcome. Tea, coffee, squash and delicious cake are always available, cash payments only please. We thank everyone who has donated a cake so far – they are always appreciated.

The café is a community event, and we would welcome you as an occasional helper, perhaps with a group of your friends. Please get in touch at [TOCS.friends@gmail.com](mailto:TOCS.friends@gmail.com). We donate the proceeds to the Methodist Church in exchange for free use of their building, which is a valuable hub for the Tockington community and currently needs the community's support.



## Learn with Bern

Knitting & Crochet Classes



**Individual & Small Group Tuition**

**Over Lane, Almondsbury**

**Tel 07359515347**

**[hunkaboo.learn@gmail.com](mailto:hunkaboo.learn@gmail.com)**

## GRANGE CARPETS



- CARPETS
- VINYL
- LAMINATE FLOORS
- RUGS
- CURTAINS
- BLINDS

Serving the local community since 1984, Grange Carpets are your first choice for flooring, rugs, curtains, and blinds. We supply most leading brands of carpet and vinyl as well as ILIV curtains and the Think Rugs range. Our carpet prices include standard fitting, with a free home measurement and consultation service.

*Grange Carpets is a member of the Associated Carpet Group.*

GRANGE CARPETS  
28 ST MARY STREET  
THORNBURY  
BRISTOL BS35 2AT

01454 419805

## Friends of St. Mary's

The prize winners in the November draw, held on 2nd November 2023 were:

Amount	Number	Name
£150	254	Mrs S Roos, Olveston
£75	172	Mr A Clarke, Olveston
£50	392	Ms A Chick, Redland
£25	651	Mr B Bradley, Olveston
£25	323	Mr D Baker, Olveston
£20	626	Mr E Garrett, Tockington
£20	512	Mrs R Arkell, Olveston
£20	282	Mr N Dawes, Olveston
£20	454	Mrs P MacLeod, Olveston
£20	358	Mrs S Foley, Olveston

If you are not yet a member and wish to join the lottery, please telephone Andy Phillips on 01454 614890 or email [andisp28@hotmail.co.uk](mailto:andisp28@hotmail.co.uk).

Don't forget - if you're not in, you can't win!

## Olveston and Tockington Methodist Church - Property update

Just over a year ago in November's Meeting Point, we told the parish community that our Church Council had decided to reduce the number of our premises and invited anyone who wished to do so, to share views on what should happen. We had a very substantial response and have been deeply grateful for the support and encouragement offered by so many individuals, and from St Mary's. We have a target of two years in which to plan and implement our decisions.

This update focuses on Olveston where we are reactivating the changes which we were about to make in 2020 until the pandemic brought everything to a juddering halt. Three years on, it remains our goal to provide the existing Chapel with the facilities to function as a fully independent building. The existing Hall is to be marketed with planning permission for a private dwelling. We are very sad to have to lose the Hall; it has served the community well since it was built in 1937, but it would require substantial funding to maintain in the future, which we do not have. The proceeds from its sale will enable the upgrading essential to securing the future of the Chapel building, available for church and community purposes.



**www.manwithavan.info**  
Removals ✓ House Clearances ✓  
Rubbish collections ✓  
**Call: 07742 791139**

**Cheaper  
than a  
skip!**



## Quartz Worktops

Worktop Manufacture - Templating & Installation  
[www.planitstone.co.uk](http://www.planitstone.co.uk)



0% Finance available

Email: [sales@planitstone.co.uk](mailto:sales@planitstone.co.uk)

Trade and Public Welcome

Call: 0117 329 1718

Wider range of materials, at a better price than B&Q, Wren, Howdens. Deal Direct with your local Worktop manufacture

 **PawsPetCare**  
...simply for the love of animals

Providing care for your pets  
when you need it

Contact Helen for a friendly and reliable service  
07493 153520 or [enquiries@pawspetcare.com](mailto:enquiries@pawspetcare.com)  
[www.pawspetcare.com](http://www.pawspetcare.com)

## Frontline Martial Arts

Traditional Martial Arts / Taekwondo

Mighty Mites (under 10's): Fridays 4.30-5.15pm at  
Juniors (ages 10-13): Mondays 7.15-8.15pm  
Adults/over 13's: Mondays 8.15-9.45pm  
at Alveston Youth Centre



Tel: 07771 692222  
[www.frontline-ma.co.uk](http://www.frontline-ma.co.uk)

## THE WHITE HART INN Olveston



Traditional 17th Century English Pub

Catering for Parties and Functions  
Wide variety of cask & keg beers  
Skittle alley & pool table available  
Book now for Skittle Matches  
Award winning courtyard garden

Telephone: 01454 612175

## SEVERN SIDE TAXIS

SIX SEAT COMFORT  
AIR CONDITIONED CAR



AIRPORTS  
BUS STATIONS

HOSPITALS  
EVENINGS OUT

RING STEVE WARD  
**07879 601011**

## FRANCIS

DESIGN & BUILD

Carpentry & Building Services

For all aspects of carpentry

Doors, Skirting, Kitchens, Fencing,  
Decking, Stairs, Timber frame etc.

Call Craig on 07970 514409  
(or, if busy)

email: [craigyoung0308@live.co.uk](mailto:craigyoung0308@live.co.uk)

When we made a partial upgrade in 2011, we experimented with differing layouts, installed good IT equipment, and looked for ways in which to provide for flexibility in the use of furniture. This process will continue. The upgraded chapel will be dual purpose, still functioning as a religious building. In 2011 we purchased several new pieces of furniture for use in worship, including a communion table. These are kept on the dais and will continue in use.

To carry out these plans will require the support of the Methodist Church nationally, and dual-purpose buildings are on its agenda. It will be challenging but, we hope, rewarding. A display of the proposed changes to the Chapel building will be available on site by the end of the year.

To complete the picture, in Tockington, the Chapel on the Green will continue as it is; essential maintenance will be necessary not too far ahead. The Wesley Rooms also will continue to function as at present.

For more information, please feel free to contact any of the stewards: Simon Edwards (Minister), Trevor Watkins, Maggie Spooner, Jennifer Bone.



## King Arthur and the Knights of the Round Table

It can't be Panto time again? Oh yes it can! And this year you are in for a real treat when Octopus Drama Group takes to the boards with their very own version of King Arthur and The Knights of The Round Table. This hilarious pantomime, a real 'gigglefest', has been written specially for Octopus by group member, Peter James.

In this Panto, directed by Abi Baskerville, you will laugh out loud as King Arthur and his useless Knights, encounter the unusual residents of Bumbleton on Severn. On their travels they come across witches, elves and the inevitable halfwit side kick, whose job it is to keep you smiling from curtain up to the final Octopus song. They do a brilliant job! This is King Arthur and his Knights as you have never seen them before!

Tickets can be purchased from Rosie and Rex gift shop on Thornbury High Street from Friday December 1<sup>st</sup>.

Adults £8, Children £6. (Under 18s)

Performances will be in Christ the King Church Hall on Wednesday 10<sup>th</sup> – Friday 12<sup>th</sup> January at 7.30pm and on Saturday 13<sup>th</sup> January at 11am and 2.30pm.



### Severnside Heating & Plumbing



- Installations
- Servicing
- Repairs

Working locally since 2003. An experienced heating and plumbing engineer. For a no obligation quote please call Mike  
Mob: 07554 825813 Tel: 01454 613780



**Your advert could be  
here and reaching  
1,500 households**

**Contact Bernard  
meetingpointadvertising@  
gmail.com**



## Dave Webb

**Painter - Decorator**

**07809 869149**

**01454 201640**

*Reliable, professional, friendly service.  
Please ask for your free quotation*



## Early Years Group Music Classes for ages 0-3 years

- Severn Beach, Littleton on Severn
- All welcome from £3 a session
- Piano teaching for children age 4+



Janet Harrison  
Suzuki Piano Teacher  
Janet\_harrison@outlook.com  
T: 07562 212435



## Squire Sweep

A chimney sweep service from  
**Michael Squire**

**Tel: 07504 253 467**

**Email: [squiresweep@gmail.com](mailto:squiresweep@gmail.com)**

**Visit: [www.squiresweep.co.uk](http://www.squiresweep.co.uk)**

## Carols on the Green

On Tuesday 12th December at 6.30pm, join your friends and neighbours on Tockington Green for our annual festive sing-along. Don't miss this chance to bring out your Christmas jumpers and festive hats, as well as your best carol-singing voices! Remember also to bring a mug for mulled wine or other hot drinks, an appetite for mince pies, and donations to help fundraise for a new kitchen at Tockington Chapel.

Donations of wine are appreciated! Please contact Cath at South View on Tockington Green ([tocs.friends@gmail.com](mailto:tocs.friends@gmail.com)).



## St Peter's Hospice Christmas Coffee Morning

A Christmas coffee morning will be held on Saturday 9th December from 10.00am – 11.30am at the Methodist Church Hall in Thornbury.

Christmas cards, a gift stall, homemade cakes and a raffle etc., will be available. Entry, to include tea/coffee and cake, is £3.00 per person.

*Seasons Greetings*

**Personalised Christmas Cards**  
Choose a design you like and send us your photo and wording.  
**Pack of 10 cards for £9.99**

**A4 Personalised Calendars**  
Just send us 12 images and we'll professionally print them.

£12.00 for 1  
£20.00 for 2  
£25.00 for 3

**01454 631289**  
info@motionprinting.co.uk  
www.motionprinting.co.uk

**motion**  
motiondesignsprint

ALMONDSBURY PHYSIOTHERAPY AND SPORTS INJURY CLINIC

**Louise Brinson**  
Chartered Physiotherapist, hpc reg

Almondsbury Surgery, Sundays Hill  
Almondsbury, BS32 4DS

**Tel: 07786915442**  
**Fax: 014540615745**  
**E-mail: [physioulouise@hotmail.co.uk](mailto:physioulouise@hotmail.co.uk)**

Also at Aztec Spa Leisure Club

**ACE1**  
Window & Gutter Cleaning  
Window Cleaning  
Gutter Cleaning & Repair  
Fascia & Soffit Cleaning  
Conservatory Roof  
Solar Panel Cleaning  
Power Washing

**M: 07590 201264**  
**T: 01454 436162**

 Gleaming Insurance

**Olveston and Tockington**  
*Parish Hall*  
07780 515317

A great venue for :

- Fitness
- Parties
- Public events
- Music & Dance

Check availability & book online at [www.olvostonparishhall.co.uk](http://www.olvostonparishhall.co.uk)

*"Our newly decorated Hall"*





## Aust Parish Council

### Council update

The parish council has had a busy few months since my last article. We have responded to a number of planning applications, including the proposed change of use of one of the buildings at Whale Wharf, Littleton, to a drug and alcohol treatment centre. Councillors also discussed speeding of vehicles around Aust, particularly on the A403 near the entrance to the village. Councillor Matthew Riddle, our South Glos ward councillor, has put forward a proposal for speed reduction measures on this stretch of road. The scheme will have to compete with others across South Glos. for funding. Cllr Riddle would be grateful if residents could report any significant incidents or near misses around the junction, as this will give further evidence of the need for speed reduction. He can be contacted on [matthew.riddle@southglos.gov.uk](mailto:matthew.riddle@southglos.gov.uk). In January, members will be considering the budget for the council for the next financial year. This is used to determine the 'precept', or share of council tax, which is collected on behalf of the PC by South Glos. Council.

You can keep up to date with the parish council's activities via our minutes which are published on the website: [bit.ly/austpc\\_docs](http://bit.ly/austpc_docs).

### Sandy Lane update

Residents of Aust will be well aware that the tunnel from Sandy Lane to the motorway slip road has been closed for many months. We have recently been informed by National Highways that planned repair works will not now start until January. The parish council will continue to press for works to be carried out as speedily as possible and will keep residents informed of any further updates.

The parish council and National Highways have been in discussion with South Glos. Council in the hope that SGC might adopt the Sandy Lane tunnels as part of the official highways network. Unfortunately, SGC have declined to do so.

### Waste and Recycling consultation

South Glos. Council are consulting residents about proposed changes to recycling and waste collection services. The purpose of these changes is to:

- Make it easier for people to recycle more,
- Reduce the carbon footprint of waste in South Gloucestershire, and
- Reduce costs, so that funding covers the cost of delivering the service.

Over the next three years, SGC want to roll out a weekly collection of flexible plastics for recycling to all households with a kerbside collection and introduce further measures which make it easier for you to recycle more of what you currently throw away. Once you're recycling more and creating more space in



*Bristol Carriage Masters*

- Religious or non-religious funerals
- Bespoke funerals for burial or cremation
- Fully guaranteed pre-paid funeral plans
- Direct cremations



177 Crow Lane, Henbury, Bristol, BS10 7DR  
Telephone: 0117 950 8066  
Website: [www.bcm-funerals.co.uk](http://www.bcm-funerals.co.uk)  
Email: [admin@bcm-funerals.co.uk](mailto:admin@bcm-funerals.co.uk)

## Windmillcare Homes

— great places to Live



### Windmill House

The original, elegant home in a delightful rural setting with 2 acres of beautiful gardens delivering unrivalled care

01454 413818



### OSBOURNE COURT

Our brand new purpose-built home providing exceptional specialist dementia care in the heart of the village of Stoke Gifford

0117 944 8700

Residential, Short-term Respite  
and Day Care available

[enquiries@windmillcare.com](mailto:enquiries@windmillcare.com)

or [www.windmillcare.com](http://www.windmillcare.com)

## TOCKINGTON OSTEOPATHY

HELPING YOU BACK TO HEALTH

### Effective Treatment of:

- Back and Neck Pain
- Arthritic and Rheumatoid Pain
- Joint Pain and Injuries
- Sciatica and Trapped Nerves
- Tendonitis and Muscle Injuries
- Tension Headaches

Please call on **07870 219249** or visit our website [www.tockingtonosteopathy.co.uk](http://www.tockingtonosteopathy.co.uk) to make an appointment or discuss how we can help.

Run by Natalie Gladstone - over 20 years' experience.

Easy parking on site - all major health insurances covered.

Old Down Hill, Tockington, BS32 4PA.

your black bin, SGC want to consider how often black bins for non-recyclable waste are collected, looking at options for a three or four weekly collection.

You can read more about the proposed changes and give your views on the SGC website:

[https://consultations.southglos.gov.uk/waste\\_less/consultationHome](https://consultations.southglos.gov.uk/waste_less/consultationHome). You can make comments until 7<sup>th</sup> January.

### Next parish council meeting

Our next meeting will be held on Tuesday 9<sup>th</sup> January at 7:30pm in Elberton village hall. Agendas for council meetings are posted on the village noticeboards at least five days before the date of the meeting and are also available on the council documents web page ([bit.ly/austpc\\_docs](http://bit.ly/austpc_docs)). Residents are very welcome to attend.

Until then, we wish you a happy and peaceful festive season!

## Aust Parish Council

Serving the communities of Aust, Elberton  
& Littleton-upon-Severn

Emma Pattullo, Parish Clerk

(01454) 837271

[austparishcouncil@gmail.com](mailto:austparishcouncil@gmail.com)



## Olveston and Tockington WI

December's WI meeting will be our Christmas meeting, and Judith Laing will be showing us how to make festive origami. There is also a Christmas wreath making evening and some of us will be joining WI members from all round the Thornbury area, in the URC in Thornbury, for a Carol Concert.

Olveston and Tockington WI meet at 7.30pm on the second Tuesday of the month at the Parish Hall. If you would like to join us, please contact Angela Green on 01454 615222 and scan the WI QR code to find out more about joining the UK's largest women's membership organisation.



## XL Plumbing & Heating Solutions Ltd

- General Plumbing
- Boiler Installation, Servicing & Maintenance
- Gas Safety Certificates
- Bathroom Installation & Tiling

Contact Mark Mob: 07738 726803  
Email: [xlplumbing@hotmail.co.uk](mailto:xlplumbing@hotmail.co.uk)  
Tel: 01454 549008  
Web: [www.xlplumbing.co.uk](http://www.xlplumbing.co.uk)



**Tel: 01454 885766**  
**Mob: 07724 166917**

# Ridge Roofing and Property Maintenance

Roofing ❖ Chimney Repairs ❖ Lead Work  
Guttering ❖ External Painting  
General Maintenance ❖ **FREE Estimates**



## D-CR

### DOMESTIC APPLIANCES



**DOMESTIC APPLIANCE REPAIR SPECIALIST**

- WASHING MACHINE
- TUMBLE DRYER
- DISHWASHER

- FRIDGE FREEZER
- COOKER
- HOB OR HOOD

**Fast, friendly and efficient service  
Sales - Service - Repair**

**Tel: 01454 850522 - Mobile: 07917441539**  
**Email: d-cr@live.co.uk - Web: www.d-crdomesticappliances.co.uk**

## EARTHWORKSUK

We offer a range of recycled and quarried products including 6F5, type 1, topsoil and decorative stone. These can be delivered straight to you on site or collected from us at our yard in Cromhall. Check out all we can offer you on our website or contact us using the details below.

**Skip Hire**

**Top Soil**

**Recycled Aggregates**

**Grab Lorry Hire**

**Tipper Hire**

info@earthworksuk.co.uk www.earthworksuk.co.uk  
Orders Line: 07782472727  
Bristol: 01179 828265 - South Glos: 01454 501037

### Save up to 70% on your electricity bill

Google ★★★★★

Solar PV installers since 2010



**ELECTRICAL SERVICES**

Your Trusted,  
Local Electricians

- Lighting
- Sockets
- Rewires
- Consumer Units
- EV Charge Points

- Solar Power
- Battery Storage
- Fault Finding
- Landlord Reports
- EICRs

f t i /laelectrical  
**01454 633 336**  
**laelectrical.com**




# Saturnalia: From Roman Winter Festivals to Modern Xmas Customs

*Jenny Newley*

**Wed. 6th Dec. 7.30pm. Methodist Church, The Street, Olveston**

Apart from sanitation, medicine, education, wine, public order, irrigation, roads, the fresh water system and public health ... what have the Romans ever done for *us*?



Well, Dr Mark Lewis would like to put forward a case for there being a Roman origin for some of our Christmas customs - decorating houses with midwinter greenery, work and business coming to a halt, schools and law courts closed, feasting, drinking, lighting candles, exchanging gifts, playing games, singing, wearing colourful clothes, and normal life, generally, being turned a bit upside down.

The Roman winter festival of Saturnalia was the most important festival of the year. The poet Catullus thought it was the

*best* time of year and berated a friend for spoiling the holiday by giving him a book of truly bad poetry (one which he'd probably been given himself and was off-loading on Catullus).

Pliny the Younger (who often tended towards stuffiness) wrote in a letter that he took great delight in retiring to the quietest rooms of his house during Saturnalia, "when the rest of the house is noisy with the licence of the holiday and festive cries. In this way, I don't get in the way of the rest of my household having a good time and they don't distract me from my studies."

Dr Mark Lewis is the Senior Curator (Roman) based at the National Roman Legion Museum in Caerleon and is making a welcome return to Olveston. He's looking forward to coming back and we're looking forward to having him. He's hugely knowledgeable but wears his knowledge very lightly and humorously. Don't miss this chance to hear him and to ask him questions.

All very welcome. Non-members: £3. Pay on the door (by cash, or cheque to OPHS - no cards). Free refreshments on offer before the meeting starts.

[www.olvoston.com/historical-society](http://www.olvoston.com/historical-society)



# LINELA

embroid | print | promote

One place for everything promotional.  
Specialising in embroidery,  
printing and branded gifts



**T Shirt Printing**  
**Sports wear**  
**Work wear**  
**School wear**  
**Promotional Products**

Call us: 01454 615300

Email us: sales@linela.co.uk

www.linela.co.uk



**Livewire Electricals**  
Electrical & Mechanical Solutions



Domestic, Commercial  
and Industrial Installations

All electrics for new build, extensions and alterations to satisfy mandatory Building Regulations. Landlords safety inspections  
Portable Appliance Testing (PAT)

Electrical and electronic service and repair  
For 24 hour call-out service available please call Peter Jones: Tel: 07880 858785

Email: pete.livewire@blueyonder.co.uk

Local number Tel: 01454 613482

Visit our web site at  
livewire-electrics.co.uk

**BonneFreshClean**  
Carpet & Upholstery Cleaning Specialists

Love the look and smell of clean and fresh carpets and upholstery?

Bonne Fresh Clean brings to you a professional carpet and upholstery service that will leave them sparkling and fresh.

Call for a free no obligation quote today!

- Thorough, gentle deep cleaning, no residues
- Child and pet friendly treatments
- Latest industry approved qualification and full insurance



Bonne Fresh - Relax and enjoy beautifully clean and fresh carpets and upholstery!

T: 01454 436001 M: 07774 908410

W: www.bonnefreshclean.co.uk

44 Townsend Lane, Almondsbury, Bristol, BS32 4EQ

**Cookin' On Gas Ltd**



Repairs & Sales of all domestic appliances:

GAS safe REGISTER 211879

Gas & Electric Cookers and Hobs  
Washing Machines, Dishwashers  
Tumble Dryers

www.cookinongasltd.co.uk

enquiries@cookinongasltd.co.uk

Matt Cole  
1 Olive Gardens Tel 01454 851545  
Alveston Mob 07715 705670

## Riding for the Disabled

A Volunteer



Riding for the Disabled Association  
Incorporating Carriage Driving

I first started volunteering at Riding for the Disabled (RDA) in 2018 at the Avon Riding Centre in Bristol. I have a lifelong love of horses and after retirement volunteering for the RDA seemed a natural fit. I stayed with Avon Riding Centre until covid struck and appreciated their structured approach to training as a dedicated RDA centre. In between lockdowns I took up riding again and finally settled into weekly sessions at Severnvale Equitation Centre, just outside of Chepstow. It was here that I was introduced to the Forest RDA group, a much smaller organisation who use the riding school horses and ponies for their clients.

I volunteer once a week and love it. Being a smaller group there are more opportunities to get involved with the horses so, if you are leading a horse, then you are responsible for finding it, tacking it up and warming it up ready for the lesson. If I'm not leading a horse then I'll be sidewalking a rider which entails walking alongside, encouraging them to engage with the instructor and helping them with their riding position.

The ages of the riders range from 3 to 47, though we only have a handful of adult riders. The riders all have various degrees of disability, some have difficulty with hearing or speaking, some are physically disabled, some have autism or cerebral palsy. You have to find the best way to communicate with the rider so that they have an enjoyable experience. It is so rewarding to see the instant transformation once the rider is on the horse. They almost always become calmer and the bond between the rider and horse is magical. The horses understand that they have to behave, put up with their reins being pulled or have a rider wriggling around in the saddle. Nothing phases them. To see the improvement in the riders, week on week, is so satisfying, you see them grow in confidence and in their riding ability. It provides a short break for the parent or carer and a therapeutic experience for the rider.

It's hard but enjoyable work, there are four back-to-back sessions every Thursday afternoon. All of the lessons are held in an indoor arena, baking hot in the summer and freezing in winter, you need to be fit enough to walk and run around the arena as required. There is always something to be done, setting up the poles in the arena, tacking and untacking the horses, meeting and greeting the parents and riders. Working with animals, however placid they appear, can be unpredictable so you have to be on your toes at all times, the safety of the rider is paramount.

## Beauty at the Barn

4, Grey Gables, Vicarage Lane, Olveston  
For appointments telephone Nicola on  
01454 201717



Jessica Manicures  
GELeration Nails  
Shellac Nails  
Jessica Pedicures  
Spray Tanning  
Waxing  
Ear Piercing  
Eyelash Perming  
Eyebrow Shaping  
Eyelash tinting  
And more...  
Evening appointments available  
Gift vouchers available



## Olveston & Tockington Tennis Club

Introducing a brand new coaching  
programme with TH Tennis.  
Offering 5 days/week coaching  
from kids to adults

[Clubspark.lta.org.uk/THTennis](http://Clubspark.lta.org.uk/THTennis)

[www.ottctennis.co.uk](http://www.ottctennis.co.uk)

Now's the time to get back  
on court.

## Tech support for you at home or business

LAPTOPS, COMPUTERS, PRINTERS,  
MOBILE PHONES, TV's, XBOX,  
JUST ABOUT ANYTHING  
REALLY.



I'm Jed,  
The Tech Guy  
I have a world of technical  
knowledge and the patience of a saint!  
No matter how big or small your issue, I  
can solve it either in person, over the phone or  
on line.

With 5 years of experience call Jed:  
**01454 406000**  
[Help@myneat.co.uk](mailto:Help@myneat.co.uk)

## Do you still use gmail for your small business?



A Professional Website designed and created  
A Professional Email Address using your domain  
Domain Registration & Hosting  
Microsoft 365 Basic  
A local 01454 Number

Give me a call  
or an email for  
more details!

**01454 406001**  
[businesswebelevate.co.uk](http://businesswebelevate.co.uk)  
[Help@businesswebelevate.co.uk](mailto:Help@businesswebelevate.co.uk)

Volunteering for the RDA is a very rewarding and fulfilling experience, it does help to be confident around horses, but initial and ongoing training is provided to ensure all volunteers remain up to date with safety protocols and best practice. If you are interested in finding out more about volunteering at any of the RDA centres, please check out local groups listed on [www.rda.org.uk](http://www.rda.org.uk)



## Tango Calor Trio

This musical evening presents a collective of wonderful musicians who share a love for Argentine tango. Tango Calor was set up by bandoneon player Mirek



Salmon (BBC National Orchestra of Wales, Welsh National Opera, RSC) in 2016. For this concert Mirek will be joined by guitar virtuoso Daniel Kellie described by D'Addario Strings as "Truly stunning" and sensational vocalist Indira Roman. Together they will take you on a journey from the classic tango of 1940s Buenos Aires to the beloved

music of Astor Piazzolla with a few seasonal surprises on the way! Expect romance, passion and fireworks!

16<sup>th</sup> December at 7.30pm in Porch House, Castle Street, Thornbury. Paying bar available. Tickets are £12 from: [AAGThornbury@gmail.com](mailto:AAGThornbury@gmail.com)

## When I Grow Up

Thornbury Musical Theatre Group Juniors are performing When I Grow Up, a musical mash up of all the spotlight stealing songs TMTG Juniors want to perform.

Olveston Parish Hall, Saturday 2nd December at 2.30 pm and 7.30 pm and Sunday 3rd December 2.30 pm at Olveston Parish Hall, Tockington. All tickets £8.

Tickets available from [www.ticketsource.co.uk/tmtg](http://www.ticketsource.co.uk/tmtg) or 07305 222922  
Please come and support us!



**PREMIER HOMECARE** Delivering Outstanding Live-In Care

A COVID-safe and affordable alternative to nursing home care.

Our fully managed, affordable 24 hour Live-In Care service allows you or your loved one to continue living in the safe, familiarity and comfort of the family home.

Our staff are hand picked specifically to match the personal needs and requirements of each individual client; guaranteeing you a bespoke and tailored service.

**24 hour Care at Home** - carers carry out all required duties following a personalised care-plan. They can manage medication, personal care, domestic duties as well as shopping and meal preparation plus trips out where required.

**0117 456 2490**  
www.premier-homecare.co.uk

9.8 homecare.co.uk  
Homecare.co.uk Review Score for Premier Homecare

Inspected and rated **Outstanding** by CQC

Offices at:  
24 Canford Lane  
Westbury-on-Trym  
BS9 3DH

67 Stoke Hill,  
Stoke Bishop  
BS9 1EP

"We are delighted with the Live-In care that our mother receives in her home. The carers are patient, kind and very well-trained. We trust them completely with our mother's care."  
ML, November 2020

**el cuisine**

Catering for any occasion  
Private parties, Birthday and Anniversary Celebrations,  
Weddings, Funerals, Corporate Events,  
Formal Dinners, Shoot Lunches... whatever the occasion

www.el-cuisine.co.uk Please contact Emma 07931952939 info@el-cuisine.co.uk

**Independent Preparatory School and Nursery**  
for Boys and Girls aged 2 - 13

- Small, friendly classes
- Envious success rate for Senior School entry
- Pathway Programme for Years 7 & 8
- Wrap-around care
- Excellent facilities

**TMS**

**Tockington Manor School**

Scan the QR code / Visit [www.tockingtonmanorschool.com](http://www.tockingtonmanorschool.com) / Call 01454 613229

## Brigadoon comes to Tockington!

Rehearsals are well underway for The Parish Players' 2024 production of 'Brigadoon'. This musical masterpiece will light up your evenings next February half term when it is staged at Olveston Parish Hall (Upper Tockington Road BS32 4LQ) at 7.30pm every evening from Wednesday 14th to Saturday 17th February 2024.

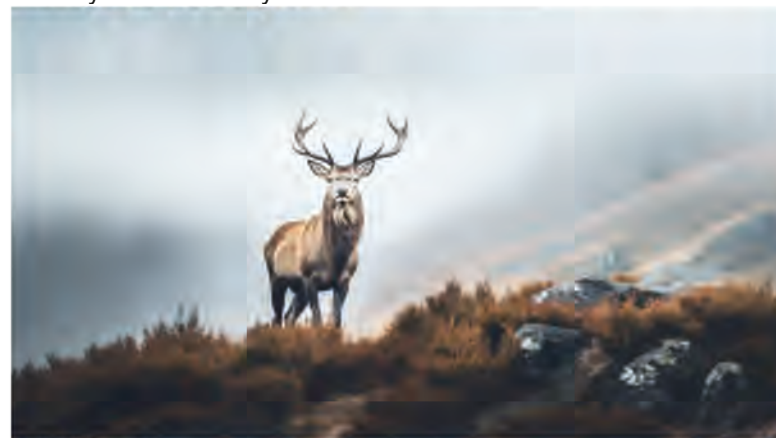


Image by Freepik

The engaging and mysterious story is the stuff of romantic legend, set in the Scottish Highlands. Through an enchantment, the village of Brigadoon appears only for one day every 100 years. No one can ever leave the village, or the enchantment will be broken, and no visitor can stay, unless they fall in love and give up the world outside. By chance, two 1940s servicemen stumble upon the village one day when it is visible. The rest, as they say, is history ... come along to find out for yourself!

Brigadoon first appeared on Broadway in 1947. Its script and lyrics are by Alan Jay Lerner, with music by Fredrick Loewe, the creative partnership that also wrote 'My Fair Lady'. Once again, The Parish Players are under the skilful and experienced direction of Linda Evans, with Chloe Allsopp-Jones as Musical Director. Tickets go on sale in January (details will be in the next issue of *Meeting Point*), so write the dates in your diary now and watch out for more information.

If you'd like to help backstage or front of house, it's not too late to get involved. The Parish Players always welcome new members to help with the scenery, costumes or make up, or to be part of the stage crew, refreshment team or programme sales.

You can contact us via [secretaryparishplayers@gmail.com](mailto:secretaryparishplayers@gmail.com) or, alternatively, via our Facebook page at [www.facebook.com/OlvestonParishPlayers](http://www.facebook.com/OlvestonParishPlayers).





## We are hiring

Join our Team at Beech House in Thornbury



Contact us  
0117 992 7012

keeping your garden beautiful...

- LazyLawn - superior artificial grass supply and installation - licensee for Bristol & South Wales
- landscape design and build with 25 years experience
- tree surgery
- garden makeovers
- regular garden maintenance

**Garretts Gardens and Landscapes**

for Garretts Gardens or Landscapes  
t 01454 614111 m 07974 109919  
info@garrettslandscapes.co.uk  
www.garrettsgardens.co.uk

Come rain or shine,  
lisa costa estate agents have the experience and knowledge to take you smoothly through the moving process.



**lisa costa**

RESIDENTIAL SALES & LETTINGS

53 High Street | Thornbury | BS35 2AR  
01454 279734 | sales@lisacosta.co.uk | lisacosta.co.uk

Please note: If your property is currently on the market, the terms and conditions of your Existing agency agreement must be considered before instructing ourselves.



## Olveston Parish Council

Pat Savage

### Coming Soon

We are pleased to announce that we are currently redesigning and updating the Parish Council website. The new site, which we will be launching early next year, will have all the usual information about the Council meetings, but will also focus on providing more useful guidance, as well as much more about our community in general and all it has to offer. Our aim is to make it simple to use and to be the 'go to' place for all information about our Parish. We'll keep you posted on the launch date.

### Village Gates

We are sure you have now had an opportunity to admire the gates which were installed at the beginning of October. We believe they enhance and contribute to the overall character of the Parish. The gates will be the responsibility of a Councillor who lives nearby. The surrounding grass will be cut as part of the normal grass cutting throughout the Parish.

On behalf of the Council, we wish all our Parishioners a Merry Christmas and a Prosperous and Peaceful New Year.

## Litter Picking.

The last litter pick of the year will be on Saturday 2nd December at 10.30am. Please meet at the Parish Hall car park.

After many years, Brenda and Geoff Cook have recently retired from litter picking along Aust Road, from Olveston to the junction with Redhill Lane, an unfailingly fertile stretch, and we are all indebted to their conscientious endeavours. FFI: Rod Williams, 07375 931239.



**Pamela MacLeod**  
**HOLISTIC THERAPIES**  
REFLEXOLOGY • MASSAGE • AROMATHERAPY

Member of Federation  
of Holistic Therapists

07765804144

**\*\*Introductory Offer\*\***

£10 off any 60 min treatment

FULL BODY MASSAGE	60 MINS	£45
*AROMATHERAPY MASSAGE	60 MINS	£48
BACK, SHOULDER & NECK MASSAGE	30 MINS	£25
REFLEXOLOGY	60 MINS	£45

**Please allow at least 15 minutes for Consultation**

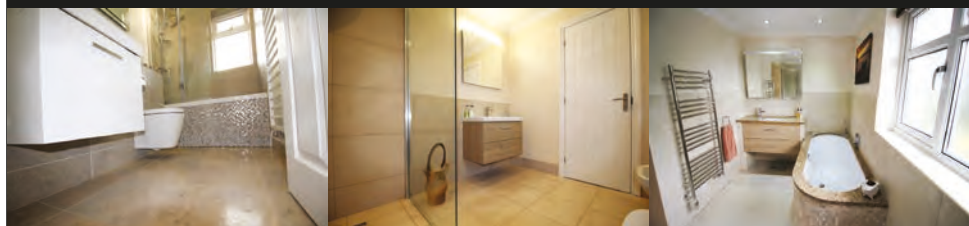
*\*A blend of pure essential oils will be tailored to address each individual's needs.*



# Paul Whittaker

## BATHROOMS & WETROOMS

DESIGN . SUPPLY . INSTALLATION



Tel: 07879 666221 . Website: [www.paulwhittakerbathrooms.co.uk](http://www.paulwhittakerbathrooms.co.uk)



## Village Care



Our local Care and Support staff can assist with all your Homecare requirements, from cleaning and domestic duties to personal care, we can tailor our service to meet your needs.

Please contact us for a free no obligation assessment.

T: 01454 415861 E: [info@village-care.co.uk](mailto:info@village-care.co.uk)

63 High Street Thornbury [www.village-care.co.uk](http://www.village-care.co.uk)

# Old Down Cricket Club

Tony Gardner

## 150 Club Winners November 2023:

£50 Rob Birtle  
£15 Richard Panes  
£5 Marilyn Green

## Latest £25 Bonus Ball Winners:

14/10/23 Paddy Gardner  
21/10/23 Alex Grosvenor  
28/10/23 Alex Grosvenor  
04/11/23 A Gardner

# Thornbury Library

## Consultation

South Gloucestershire Council is currently consulting on options to save money on the libraries service. The proposals presented in the consultation will have an impact on the way libraries in South Gloucestershire operate.

We are asking everyone to suggest where changes to opening hours, for example, would have the least and most impact. Please spare 5 minutes to fill in this consultation form and tell us what your local library means to you and how you prefer to use the library services in your area, we would really appreciate hearing your opinions.

Find out more and have your say by 10<sup>th</sup> January 2024. Either online: [www.southglos.gov.uk/librarysavings-consultation](http://www.southglos.gov.uk/librarysavings-consultation) or pick up a printed copy from your library.

## Children's Winter crafts

Saturday 16<sup>th</sup> December 10.45am-11.45am  
Make some lovely winter decorations for the festive season.

## Enjoy a Free Hot Drink in the Library

Available Mon, Wed, Thurs, Fri 9.30am-4.pm  
Use the computers or use your own iPad, phone etc. (wifi available)  
Read a book, a newspaper, browse the shelves, enjoy a communal puzzle, or just relax.

## Staffed Hours

Mon, Wed, Thurs, Fri: 9.30-5.30 Sat: 9.30-12.30

# LALU'S GARDEN SERVICES

01454 616034  
07490 514641



LALU's Garden Services  
07490 514641  
Clearance Landscaping, And Garden Maintenance

- All makes servicing and repairs
- Petrol and Diesel MOT Testing
- Tyres, Exhausts and Batteries
- Air Conditioning
- Latest Bosch On-Board Diagnostics
- Vehicle Sales



GREEN LANE GARAGE  
OLVESTON

New Road, Olveston, BS35 4DX  
**01454 202030**



the Good Garage Scheme



FSB

## Christmas/New Year Opening Hours

<b>Post Office</b>	Olveston Post Office	Normal opening hours apart from Dec 25th, 26th and Jan 1st.
<b>Food shops</b>	Olveston Stores	Normal opening hours apart from Dec 25th, 26th and Jan 1st.
	The Crusty Loaf Bakery	Open: Sat 23 <sup>rd</sup> Dec, 8am to 1pm. Then closed until Wed 3 <sup>rd</sup> Jan, 8am to 2pm.
	Premier general store, Alveston	Open: Christmas Day, Boxing Day, New Year's Day - 10am to 2pm each day
	Perry's (Butcher), Alveston	Open: 18 <sup>th</sup> to 20 <sup>th</sup> Dec, 8am - 5pm; 21 <sup>st</sup> Dec, 7am - 5pm; 22 <sup>nd</sup> Dec, 6am - 5pm; 23 <sup>rd</sup> Dec, 6am - 4pm. Closed: Xmas Eve to 27 <sup>th</sup> Dec. Open: 28 <sup>th</sup> Dec, 8am - 5pm; 29 <sup>th</sup> Dec, 7am - 5pm; 30 <sup>th</sup> Dec, 7am - 1pm. Closed: New Year's Eve, New Year's Day Open: 2 <sup>nd</sup> & 3 <sup>rd</sup> Jan, 8am - 1pm; 4th Jan, 8am - 5pm.
<b>Pharmacy</b>	Pharmacy, Alveston	Closed: Xmas Day, Boxing Day, New Year's Day
<b>Garage</b>	Green Lane Garage	Closed: From 22nd Dec to 3rd Jan.
<b>Pubs</b>	White Hart, Olveston	Information unavailable at time of going to press
	Boar's Head, Aust	Open: Xmas Eve, 12 - 6pm; Xmas Day, 12 - 3pm; Boxing Day, 12 - 6pm; New Year's Eve & New Year's Day, 12 - 6pm; Closed Wednesdays.
	White Hart, Littleton	Open: Xmas Eve, 12 - 9pm; Xmas Day, 12 - 7.30pm; Boxing Day, 11am - 6pm.
	The Fox, Old Down	Open: Xmas Day, 11.30 am - 1.30pm; New Year's Day, 12 - 5pm
	The Swan, Tockington	Information unavailable at time of going to press



**gsharchitects**



**FREE CONSULTATION**

For further information please contact us on:  
[info@gsharchitects.co.uk](mailto:info@gsharchitects.co.uk)  
[www.gsharchitects.co.uk](http://www.gsharchitects.co.uk)  
 Almondsbury, Bristol

07780 000220

Build without planning permission

Quality design service from concept to completion

Planning, construction drawings and contract administration service tailored to suit you

Domestic, Commercial, and Sustainable Architecture.

Experienced working with Listed Buildings

Build your dream home in your garden

Development Advice and Appraisal

3D Visualisation Services

**RIBA**

**New Passage  
Cat Kennels**

**Large Runs ~ Heated Chalets  
Licensed Cattery  
in Pilning**

**Tel: 01454 632 456  
[www.catkennels.co.uk](http://www.catkennels.co.uk)**

**jfl**  
**Design & Planning**

Home Extensions - Change of Use - Floor Plans  
Full Planning & Building Regs drawing service  
Almondsbury based with successful local projects

contact *Julian Lowther* for friendly professional advice

t:0117 2591059 [julian@jfl-planning.co.uk](mailto:julian@jfl-planning.co.uk)  
m:0789 0179546 [www.jfl-planning.co.uk](http://www.jfl-planning.co.uk)

**G.V.R PITCHER & SONS**

**The Yard  
Haw lane  
Olveston  
Bristol**



**TEL: 01454 619299  
MOB: 07989 208964**

**Property Care & Improvements**

<b>Medical help</b>	GPs' Surgeries	Closed: Xmas Day, Boxing Day, New Year's Day
	NHS 111 and 999 services	Can be rung at any time
	Yate Minor Injuries Unit (Walk-In)	Open: Every day, including weekends and bank holidays, from 8am to 8pm



## Green Force

Do you know.....vapes are becoming one of the defining images of our throwaway society? Disposable vapes are almost impossible to recycle and they create huge amounts of waste. For every vape sold, there's the production of plastic, mining for lithium, shipping for transport and packaging to sell it. Then the waste at the end of its life. In the UK we bin nearly 5 million vapes each week. The safest way to recycle any vape is with other small electrical appliances for the kerbside collection or find the nearest vape collection point.

The use of a lithium battery in a single-use product doesn't make sense. Over 10 tonnes of lithium were thrown out with disposable vapes in UK in one year - enough to make batteries for 1,200 electric cars. For a green transition we need to get the most use out of scarce minerals like lithium. Vapes also contain chemicals and nicotine which are hazardous waste that will leak into the environment when disposed of.

Christmas is on the doorstep, so think about how you can throw away less food, recycle paper and cardboard packaging, while celebrating the festive season. Happy Christmas and Best Wishes for 2024.

## Calendar Girls

Calendar Girls' was performed by local amateur group, Collaborative Productions, between 21<sup>st</sup> and 23<sup>rd</sup> September at Rangeworthy Village Hall and a total of £5,899.37 was raised from the four performances, which is being shared between two charities, BUST and Blood Cancer UK. We would like to thank the audiences for reaching deep into their pockets to support these charities. We are also grateful to our sponsor Renishaw plc, as well as the many people and companies who helped us in our quest to put on this production, some of whom offered their services free of charge.



**CHRISTMAS DAY MENU**

*All we want for Christmas*

4 COURSES  
(10 Edmonds Edmonds)

4 Courses for £69.99  
per person



Book your festive occasion or  
Christmas Day meal with us

For all festive and Christmas Day  
bookings please email Wayne  
and the team on  
[3291@greeneking.co.uk](mailto:3291@greeneking.co.uk) or call  
01454 614800.

A £10 deposit per person is  
required for all bookings.

We look forward to seeing you!



**FESTIVE FAYRE**

*All we want for Christmas*

2 COURSES OR 3 COURSES

2 Courses for £16.99  
3 Courses for £19.99

## A Cost of Living Crisis, Inflation, a Collapse in the Value of Sterling, War in Ukraine.....

What to do? The simple answer is to join the u3a Thornbury Investment Group 1 Club and share the pain. The Club meets at 10am on the second Wednesday of each month in the Tockington Methodist Church to share views, knowledge and expertise. The main aims of the Club are:

- Social - we meet in a local pub after monthly meetings for consolation, if our investments are not performing as hoped for, or to celebrate successes; so there is always an excuse for lunch and possibly a drink. We also meet with our other halves for a New Year's lunch and the awarding of prizes for the winners of Club competitions.
- Educational - There are individual and group competitions, for example small groups meet separately during the year to compete in managing their group's fantasy portfolios, so no money involved. At the main monthly Club meetings one of the groups will present an economic and market review to be followed by a small number of individual presentations on proposals for potential Club investments plus periodic discussions or presentations on financial topics.
- Investing - Each Member is expected to invest a relatively modest monthly amount in the Club's portfolio of investments. Members receive units in return that accumulate but which can be subsequently cashed in. Decisions on investing or selling Club assets are made by Club members who get one vote per person regardless of the number of units they hold. The aim is clearly to make a profit but also to learn about different types of investment. The purpose of this investment activity should therefore only be seen as a learning as opposed to a core element of a Member's personal finances.

Interested? You do not need to be an expert on financial matters, just somebody who is interested in investing and is prepared to contribute to the review of individual shares and to make a periodic proposal for an investment.

Why not come to a taster session by attending one of the Club's monthly meetings? If this appeals to you please email our Chairman Bill Peters [bill@onajourney.rest](mailto:bill@onajourney.rest). We look forward to hearing from you.



**BATHROOM & WET ROOM DESIGN & INSTALLATIONS**

**TILING • GENERAL PLUMBING • PLASTERING**

**BILLY COOK**  
WJC PLUMBING & TILING

07748 085 920  
[WJCPLUMBING@OUTLOOK.COM](mailto:WJCPLUMBING@OUTLOOK.COM)

• [FACEBOOK.COM/WJCPLUMBINGANDTILING](https://www.facebook.com/WJCPLUMBINGANDTILING)  
• [INSTAGRAM.COM/WJCPLUMBINGANDTILING](https://www.instagram.com/WJCPLUMBINGANDTILING)






**GARDEN MACHINERY SPECIALISTS**  
**SALES, SERVICE AND SPARES**

E-MAIL: [themowerdoctor@hotmail.co.uk](mailto:themowerdoctor@hotmail.co.uk) WEBSITE: [www.themowerdoctor.net](http://www.themowerdoctor.net)  
ADDRESS: Unit 2-3 The Rearing Unit, Oldbury Lane, Oldbury-On Severn, BS35 1RF  
TELEPHONE: 01454 411 701






DEALERS FOR:








**PHYSIOTHERAPY**  
**CHIROPRACTIC**  
**PODIATRY**  
**CHIROPODY**

"Optimise your Health"

Please Enquire:

Tel: 01454 528608  
Email: [info@optimuscp.com](mailto:info@optimuscp.com)  
Web: [optimuscp.com](http://optimuscp.com)

11 The Plain, Thornbury, BS35 2AG

**OLDOWN**  
TREE SURGEONS

TREE SURGERY AND HEDGE MAINTENANCE

PROFESSIONAL. QUALIFIED. FULLY INSURED.

[www.oldowntrees.org](http://www.oldowntrees.org)

Antony Leicester 07800512408 [info@oldowntrees.org](mailto:info@oldowntrees.org)



**Computer support and solutions for the home and business user.**

- PC/laptop repairs
- Virus removal
- Wifi/broadband issues
- Sponsors of Olveston FC

**EC COMPUTERS**

How can we help? Tel: 01454 281 500 Web: [www.eccomputers.co.uk](http://www.eccomputers.co.uk)

IT Support/Repairs Office Equipment Print Solutions Telecoms Cyber Security Managed Services Software/Database applications

## Thornbury Choral Society

Thornbury Choral Society resumes rehearsals, after the Christmas break, on Monday, January 8<sup>th</sup> 2024 at 8.00pm at the United Reformed Church.

We shall be preparing a programme of music by English composers including Holst, Vaughan Williams and Britten for our concert on May 14<sup>th</sup> 2024 . Also this term we shall be holding our Annual Choral workshop. This is on Saturday February 24<sup>th</sup> at 10.00am at Thornbury Baptist Church. We shall be studying Edward Elgar's Choral work Songs from the Bavarian Highlands.

We are always delighted to welcome new members. We are sure that there must be lots of singers who have recently moved into the area and are looking for the opportunity to sing in a good choir and make new friends. All details about the Society and future events can be found on our web-site: [www.thornburychoralsociety.org.uk](http://www.thornburychoralsociety.org.uk)

## A Note from the Severn Vale Village Agent

Peace of mind for Carers. The Carers Emergency card is a free service for carers who live with the person they care for or visit them regularly at their home in South Gloucestershire. The card identifies you as a carer, registers you for the Emergency carers relief service and in an emergency enables other carers to be contacted, or if they are not available the Rapid Response Team at South Gloucestershire Council will ensure the safety of the person you care for.

Apply for a Carers emergency card - contact Carers Emergency Card Carers Support Centre or call Carers Support Centre on 0117 9652200.

If you register as a carer whilst completing your application, you will have access to support and information from the Carers Support Centre to help you in your caring role. If you have questions or would like to know more, please get in contact with me.

More information on the project can be found here: [www.wern.org.uk/village-agents](http://www.wern.org.uk/village-agents)

Or contact me on 07880 344460 (please leave a message) or E: [elizabeth@wern.org.uk](mailto:elizabeth@wern.org.uk)

# YOUR PC GURU

COMPUTING FOR 'MERE' MORTALS

01454 616365

- Home visits
- Computer Repair
- Phone & Tablet setup
- Home Wireless & Broadband
- Smart Home Tech
- Complete Mac support

[www.yourpcguru.co.uk](http://www.yourpcguru.co.uk)  
Technology Advice & Repairs

## JC 4x4 Ltd SPECIALIST IN LANDROVER

SERVICE • REPAIR WORK • DIAGNOSTICS • MOTS • OTHER VEHICLES WELCOME

CALL JAMES: 01454 261067 / 07966 086447



07307 727244

## Free Quotes

Domestic	Radiant heating
Commercial	Boilers
Breakdowns/ call outs	Radiators
Servicing	Plumbing
Installations	LPG, natural gas, oil
Warm air heating	



[www.edgeheatingandplumbing.com](http://www.edgeheatingandplumbing.com) [info@edgeheatingandplumbing.com](mailto:info@edgeheatingandplumbing.com)

## Coming up in the New Year....



## The Severn Whalers

The Severn Whalers are rolling up at The Ship, Bristol Road, in Alveston on the evening of Friday 19th January 2024 at 7.30pm. A gathering of shipmates has been convened by the Armstrong Arts Group to keep the music going and the smiles on our faces!



The Severn Whalers is a North Bristol based shanty and sea song group and performs predominantly in the area along the banks of the River Severn. They love to entertain audiences, keeping the tales of old Bristol's seafaring alive, introducing

new songs and revitalising the old. They can often be found at Shanty Festivals all around the South West from Bristol down to Penzance and all stops in between. Tickets are £10 from [AAGThornbury@gmail.com](mailto:AAGThornbury@gmail.com)



## Thornbury Eisteddfod

The Eisteddfod will be running again next year, so come and sing a song, recite a poem, play the piano or flute or other musical instrument and have fun.

The dates are as follows:

Sunday March 10th, Instrumentals day.

Tuesday March 12th. Choirs and Mixed ensembles.

Saturday March 16th, Speech and Drama.

Sunday March 17th, Vocals.

Thornbury Eisteddfod is a celebration of the great range of talent in the local area. We hope that taking part in our festival will be an enjoyable and encouraging experience and provide a platform for our young performers.





**NORTH BRISTOL  
BATHROOM SHOWROOM  
BS32 4HY**








Scan the QR code for a  
**No obligation  
Design & Quotation  
Appointment**



Use code ALM25 to receive  
**25% DISCOUNT**

**North Bristol Bathroom Showroom  
Gloucester Road  
Almondsbury  
Bristol  
BS32 4HY**



**0117 980 7419**



**showroom@nbbs.plumbing**



**@nbbshowroom**



**North Bristol Bathroom Showroom**

There are competitive and non-competitive classes. All ages and abilities are welcome to take part.

Details are in the syllabus which can be downloaded from the Thornbury Arts Festival website: [www.thornburyartsfestival.com](http://www.thornburyartsfestival.com)

We are indebted to Thornbury Lions, who generously sponsor us each year.

## Yours Faithfully

*Danny Bamfield*

*Aust Evangelical and Littleton Evangelical Churches*

If I was asked 'what is the main reason you are a Christian?' It would have to be the love of Christ. When it comes to the crunch, to know and feel the love of God beats all. As one person in the Hebrides Revival said, 'When Jesus warms your heart you are never the same again'. In the down times he is there and no matter who you are, even one glance from your heart towards him is enough to draw him near. It is this relationship rather than religion that makes the difference. I have heard it said that relationship changes people, isn't that the same with God, if you can find him?

Churches can easily become places of rules and ritual where the spiritual longing of the heart is not fulfilled, people do not find what they are looking for. Yes, good teaching on the issues of life is important, but more so the love and presence of God. Jesus says in Revelation 3 v 20 'Here I am! I stand at the door and knock, if anyone hears my voice and opens the door, I will come in and eat with that person, and they with me.' This is very personal, and it comes with a promise-if you do something, I will do something, therefore it can be tested; if you hear his voice and open the door, he will come in.

In Britain today we still have the freedom to own a bible in our own language unlike many countries where it is strictly illegal. This has not always been the case. In the 1500s in an argument with a priest, Tyndale said 'If God spares my life, 'ere many years, I will cause the boy that drives the plough to know more of the scriptures than you do'. I feel like that boy, yet he paid for it with his life. His monument at North Nibley overlooks the Severn vale today. Surely such a sacrifice is deserving that we at least read about Jesus in the gospels and do not remain ignorant.



# TWAM

Tools with a Mission

**People Can't Work Without Tools!**

For many years, **Thornbury Rotary Club**, has been involved in the shipment of tools to areas of the world that desperately need them for self-sufficiency. The UK based charity, 'Tools with A Mission' works tirelessly, gathering donated tools, refurbishing them, sorting them, packing them into trade tool kits and despatching them to African countries where there is extreme poverty. Thornbury Rotary acts as a hub for collections from around the community. The trade kits and training are targeted at agricultural workers, builders, carpenters, electricians, motor mechanics, workshops, etc. The principal countries are:

**Uganda, Democratic Republic of Congo, Zambia, Zimbabwe, Malawi**

So, if you have tools you no longer need (including working computers, sewing machines, and knitting machines) please contact Rotarian

**Robin Cole-Morgan on 01454 414281**

He will arrange to pick up the tools and take them away at a time that suits everyone.

**Great opportunity to declutter!**

*Big thank you!*

## Rotary



For more information about TWAM, please visit <https://www.twam.uk>

# BAMFIELD

## TREE SERVICES

TREE SURGERY AND LOGS

[www.bamfieldtreeservices.co.uk](http://www.bamfieldtreeservices.co.uk)  
07761 810483

## Window Cleaning

**07976 694744 - 0117 9085794**



**M. Gray Window Cleaning**

Family run business for over 25 years  
experience working in the Almondsbury,  
Olveston, Aust areas - and nearby.

Email: [mgwc1@hotmail.com](mailto:mgwc1@hotmail.com)

## Church News

### ST MARY the VIRGIN, OLVESTON

Dec 3	10am 2pm  6pm	Holy Communion Salvation Army Concert / Toy Service No Service	Rev David Moss
Dec 10	10am 6pm	Morning Prayer Holy Communion	Rev Ann Lloyd Rev David Bone
Dec 17	10am 6pm	Holy Communion Village Carol Service	Janet McBride Rev Ann Lloyd
Dec 24	10am 4pm 11.15pm	Holy Communion Christingle Midnight Mass	Rev Ann Lloyd Rev David Moss Revs Bone & Lloyd
Dec 25	10am	Christmas Day Family Celebration	Paul Harrod
Dec 31	10am 6pm	Holy Communion No Service	Rev David Bone

Every Saturday in Term Time, 'REFRESH', 4.30-5.30 - Fun, relaxed church for families, all welcome. Every Wednesday, Holy Communion, 10am.

**Contact:** Rev David Moss, 01454 415190, [mossds@gmail.com](mailto:mossds@gmail.com)

### CHAPELRY OF ST JOHN, AUST

Dec 10	10am	Morning Prayer	Trevor Cook
Dec 24	5.15 6pm	Holy Communion Carol Service	Trevor Cook

**Contact:** Trevor Cook, 01454 618442

**Church Wardens:** Jenn Dickens 632312 and Jon Burnett 633835

## prestige

event equipment hire

Supplying you with the best equipment to succeed!  
CELEBRATIONS & CORPORATE EVENTS

CUTLERY, CHINA, GLASSWARE, LINEN, REFRIGERATION,  
COOKING EQUIPMENT, BARBEQUES, FURNITURE & MORE

Fast and Efficient, we stock a wide variety of  
equipment covering anything from  
WEDDINGS to FESTIVALS.

For a FREE quote please call: 01179613170  
[info@prestigecateringhire.co.uk](mailto:info@prestigecateringhire.co.uk)  
[www.prestigecatering.co.uk](http://www.prestigecatering.co.uk)

## 'Indawes - Outdawes'

Decorating and  
Home Improvements

Painting | Wall Papering  
Floor Laying

**Martin Dawes 07720 509653**  
[martin.dawes@live.com](mailto:martin.dawes@live.com)

## HOLIDAY LET 6 BERTH HOLIDAY HOME

(2 Bed, 1 Ensuite)

OTTERTON . BUDLEIGH SALTERTON . EX9 7BX

Central Heating . Double-Glazed  
Private Beach . Fishing Trips . Cliff Walks  
Restaurant . Bar . Live Entertainment  
Indoor Pool . Kids Club  
Shop . Cafe . Takeaway

**Tony Gardner**  
07889 727 729



**greenside**  
Landscaping

The Cottage, Hortham Lane,  
Almondsbury, Bristol BS32 4JP

Greenside Landscaping can offer a wide range of services including:

**Artificial Grass ~ Brick & Block Driveways  
Decking ~ Fencing & Gates  
Garden Design ~ Patios & Paths  
Planting ~ Ponds & Water Features  
Turfing & Seeding ~ Walling**

*We pride ourselves on flexibility and we strive to meet our client's requirements and budgets.*

www.greenside-landscaping.co.uk  
Tel: 01594 841559 Mob: 07980 384321  
Email: paulbradburn@hotmail.com

**BE DLAM**  
www.bedlambeds.com

- Free local delivery
- Free assembly
- Free disposal of your bed

Divans / Mattresses / Ottoman & Wall beds /  
Memory foam & latex mattresses / Beds made  
to measure / Pine, Metal & leather beds

**Open Tuesday to Friday: 9am-5pm  
Saturday: 10am-3pm**

**Visit our showroom:** The Old Post Office  
26a Gloucester Road, Rudgeway, Bristol,  
BS35 3RY (by the speed camera)

**01454 617 277 or 07887 853479**

**MORAS**  
Decorating Services

**ANDREW MORAS**  
Quality Painting and Decorating Services

For your **FREE** no obligation quote contact Andrew:

**07962069036**

✉ andrew@morasdecorating.co.uk  
www.morasdecorating.co.uk

**Tavira**  
Algarve, Portugal  
3 Bed Apartment  
"can accommodate up to 8 people"

Modern 3-bedroom apartment in picturesque & historic Algarve town.  
2-bathrooms including one en-suite, 2-balconies & roof terrace.  
Fully furnished, sleeps 6-8. Easy walking to thriving town centre.  
Close to railway station, golf courses & beaches. 30 minutes drive from  
Faro. Ideal for families or golfers. Tel: 07889 727729  
Email: anthonyar@aol.com - www.aminpadtavira.co.uk

TAVIRA - EAST ALGARVE  
EASYJET & RYANAIR  
NOW FLYING TO FARO  
FROM BRISTOL

**Thornbury Stairlifts**  
SALES SERVICING & REPAIRS

• New & Re-conditioned Stairlifts & Warranty  
• Removals & Relocations  
• Free Surveys & Quotes  
• No Obligation  
• Rentals for Straight Stairs

Independent, Professional & Friendly Advice  
Over 24 years practical experience

**Independent Stairlift Specialist**  
**01454 413748 07833 318722**  
www.thornburystairlifts.co.uk

## ST MARY DE MALMESBURY, LITTLETON-ON-SEVERN

Dec 10	3pm	Carol Service	Tracey Black
Dec 24	9am	Christmas Service	Tracey Black

**Contacts:** Tracey Black 417660 and Tim Pyper 416422 /07802 419451

## ST JOHN THE EVANGELIST, ELBERTON

Dec 3	2pm to 3.30	Drop-in to see future plans for the Church	
Dec 12	7.30	Carol Service	Judith Heybyrne
Dec 17	3pm	Christingle	Judith Heybyrne
Dec 25	9am	Christmas Day Service	Judith Heybyrne

**Contact:** Judith Heybyrne 616725

**Church Wardens:** Catharine Gunnery 413225 and Cheryl Meredith 411065

## OLVESTON AND TOCKINGTON METHODIST CHURCH

Dec3	10am	Tock Ch	Morning Worship with Holy Communion, led by Rev David Deeks
Dec 10	10am	Olv Ch	Morning Worship led by Rosemary Shaw
Dec 17	10am	Tock Ch	Morning Worship led by Adam Biddlestone
Dec 24	10am	Olv Ch	Carol Service, Simon Edwards
Dec 31	10am	Tock Ch	Morning Worship led by Forward Miasokwadzo

**Contact:** Rev Dr Simon Edwards 418176 simon.edwards@methodist.org.uk

## AUST EVANGELICAL and LITTLETON EVANGELICAL CHURCHES

**Contact:** Danny Bamfield 01454 419324 esther@thebamfields.co.uk

## THE OASIS CHURCH, OLD DOWN

Services at 6.30pm every Sunday. All are welcome.

**Contact:** Neil Mobbs, cnmobbs@hotmail.com

## SOCIETY OF FRIENDS (QUAKERS), Thornbury

**Contact:** Chris Willmore, chriswillmore@blueyonder.co.uk

**THE VINE House of Prayer, Pilning Street, Awkley BS35 4HL**  
 Meeting at 11am every Sunday and on the 1st and 3<sup>rd</sup> Wednesdays 2.30pm.  
**Contact:** 07512 917229, thevine\_awkley@hotmail.com

**RC CHURCH OF CHRIST THE KING, Thornbury**  
 Mass on Sundays at 9.30 and 10.30am  
**Contact:** 01454 412223, www.ckk-thornbury.org.uk

## Diary Dates for December

Information believed to be correct at going to press.

1 Fri	First Friday Community Café. Haven Memory Café Christmas Market at Olveston School	10-12 10.15 5.30	TMC URC
2 Sat	Park Run, Mundy Playing Field Litter Pick Advent Coffee Morning 10.30-1.30 Musical, 'When I Grow Up' 2.30/7.30 Christmas Fair at Littleton VH "Pilot Whale Research' Band Christmas Tree Festival 2 <sup>nd</sup> to 9th	9am 10.30 10.30  3pm 7.30 — — —	OPH OMH OPH  StM StM
3 Sun	Salvation Army Concert /Toy Service Musical, 'When I Grow Up'.	2pm 2.30	StM OPH
4 Mon	Monday Movies	7.30	StM
5 Tues	Over 60's Coffee Morning every Tuesday Citizens Advice every Tuesday Macular and Low Vision Group Thornbury Art Club, studio painting RBL Women's Section Severn Vale Flower Club	10am 10-12 10.30 1.30 7.30 7.30	DGCL TTH TMH SMCH DGCL SMCH
6 Wed	Table Tennis every Wednesday Thornbury Art Club, studio painting OPHS: 'Saturnalia'	7pm 7pm 7.30	PH AMCH OMC
7 Thurs	Thornbury Farmers' Market Coffee Shop 'Good Afternoon Choir', every week Thornbury Art Club, studio painting	9.30 9-12 1-3 1.30	StM URC SMCH

9 Sat	Coffee Morning at Olveston Methodist Hall, 2 <sup>nd</sup> & 4 <sup>th</sup> Saturdays St Peter's Christmas Coffee morning	10-12 10am	OMH TMH
11 Mon	Men's Walk and Chat Group Severn Vale Flower Club, demo	9.30 2pm	SMCH
12 Tues	Thornbury Memory Cafe WI	10.15 7.30	TMH OPH
14 Thur	Coffee Shop	9-12	StM
15 Fri	Haven Memory Cafe	10.15	URC
19 Tues	Thornbury Memory Café	10.15	TMH
21 Thur	Thornbury Farmers' Market Coffee Shop	9.30 10-12	StM
22 Fri	Carols in The White Hart, Olveston	9pm	
23 Sat	Coffee Morning	10.30	OMH
25 Mon	CHRISTMAS DAY		
28 Thur	Coffee Shop	10-12	StM
30 Sat	Coffee Morning	10-12	OMH

KEY: AMC - Alveston Methodist Church, AMH - Alveston Methodist Hall, CS - Castle School, CTK - Christ the King, DGCL - Daldry Gardens Community Lounge, EVH - Elberton Village Hall, OC - Oasis Church, Old Down, OMC - Olveston Methodist Church, OMH - Olveston Methodist Hall, OPH - Olveston Parish Hall, QAMP - Queen Alexandra Memorial Pavilion, Old Down, StM - St Mary's Church, StMT - Thornbury St Mary's Ch, SMCH - St Mary's Church Hall Thornbury, TCC - Turnberries, TMC - Tockington Methodist Church, TMH - Thornbury Methodist Church Hall, TTH - Thornbury Town Hall, URC - United Reform Church

**Contact details** for any clubs or organisations in the Meeting Point area can be found in the Meeting Point Directory on the community website: [www.olvostonandaust.com](http://www.olvostonandaust.com). If you would like to update your organisation's details, please email: [meetingpointsecretary@olvostonandaust.com](mailto:meetingpointsecretary@olvostonandaust.com)

**Advertisements** Neither Meeting Point, its editor, nor management committee accept any responsibility or give any guarantee in case of any dispute or claim as to quality, condition or delivery of commodities or services advertised in this magazine. It is not to be taken that publication implies recommendation. It is always advisable to check prices when ordering goods or services.

**Views** expressed by contributors are not necessarily those of the editor or Meeting Point magazine  
**Copyright Meeting Point 2023.** Copyright remains with the author(s) and Meeting Point. No part of this publication may be reproduced or transmitted in any form without the prior permission of the copyright owners.

Meeting Point is printed by Motion Printing Ltd.





## OLVESTON STORES & POST OFFICE

NOW STOCKING - JON THORNER'S FULL RANGE

NEW COSTA EXPRESS MACHINE IN STORE

HOME DELIVERIES (NO MINIMUM SPEND)

NEWSPAPERS DELIVERED (SMALL CHARGE)

PAYZONE FACILITY FOR BILL PAYMENTS, GAS, AND ELECTRIC TOP UPS

OUR INSTORE POST OFFICE OFFERS A WIDE RANGE OF SERVICES

CAR TAX  
BILL PAYMENTS  
CURRENCY ORDERS  
POSTAGE  
A RANGE OF INSURANCES  
&  
MUCH MORE

01454 612269

[olvestonstores@btconnect.com](mailto:olvestonstores@btconnect.com)

## BONDS *of* THORNBURY

INDEPENDENT ESTATE AGENTS



A truly local independent estate agency with over 40 years of experience and with unrivalled knowledge of the property market within Thornbury and South Gloucestershire.

Our caring sales business is based on our reputation, honesty and integrity.

Please contact: Rowena Moncrieffe  
for further details...

14 The Plain, Thornbury

Tel No: 01454 858007

[www.bondsofthornbury.co.uk](http://www.bondsofthornbury.co.uk)

[enquiries@bondsofthornbury.co.uk](mailto:enquiries@bondsofthornbury.co.uk)

