

Meeting Point



December 2022

TRUE BLUE TAXIS
(OLVESTON)

Local Taxi Company



Honest, Reliable and Safe

Cash or Card Payments



Mobile:

07967 042794

Top-to-Tail Housekeeping

- Professional
- Dependable
- Comprehensive service

**Trading
Standards
Accredited**

**Felina
Contract Cleaning**

01454 201562
07790 050187
cleaning@felina.biz
www.felina.biz



Weddings | Funerals | Bouquets | or just because...

**Beautiful
flowers for any
occasion...**

Our Shop is open Tuesday to
Saturday ~ 9.00am to 5.00pm

Taking walk in and phone orders

Delivering to BS35 and
surrounding areas ~ Tuesday to
Saturday from 9.00am to 5.00pm

Holding socially distanced
meetings for weddings and
memorials should you wish to
discuss plans

Please call for prices or pop into
the Shop in The Arcade,
Thornbury



**t: 01454 416111
e: flowers@joliesfleurs.co.uk**



**THORNBURY
Chiropractic
CLINIC**

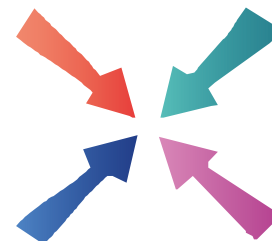
www.thornburychiropractic.co.uk

**Wishing you a Merry
Christmas and a Happy New
Year from all the team**

**Chiropractic
Acupuncture
Holistic Massage**

Open Monday to Saturday

01454 418259



Meeting Point

Volume 47, Number 3, December 2022

The community magazine for the villages of Olveston,
Tockington, Old Down, Lower Hazel, Awkley, Ingst, Aust, Elberton and Littleton upon Severn

EDITOR:

Marelin Orr-Ewing
Courtlands
Olveston
Bristol BS35 4DU
Tel: 01454 610081
[meetingpointeditor@
gmail.com](mailto:meetingpointeditor@gmail.com)

ASSISTANT EDITOR:

Angela Williams
Ashlea
Haw Lane
Olveston
Bristol BS35 4EG
Tel 01454 612850
[meetingpointmagazine@
gmail.com](mailto:meetingpointmagazine@gmail.com)

ADVERTISING:

Bernard Amos
Tel: 01454 620388
[meetingpointadvertising@
gmail.com](mailto:meetingpointadvertising@gmail.com)

Publication date
1st of each month

Material for January 2023
to the Editor or Deputy Editor
by 5th December 2022

From the Editor

As well as regular items about local organisations and activities, this month's magazine includes information about some of the festive offerings in the area, including our local 'Advent Windows', pantomimes, carol singing and an unusual, but brilliant, choice of film for the Monday Movie at St Mary's.

Recent conversations with friends and colleagues have made me realise how much voluntary work is undertaken by people living in the Meeting Point area, and just how varied it can be. So, this month, we have got the first in a new series of articles we are planning, where local people are invited to tell us about the voluntary activities that they enjoy. We hope that readers will find these articles interesting.

Finally, all of us who work together to produce and deliver Meeting Point wish you a Merry Christmas and a Happy and Healthy New Year.

Marelin

This month's cover is by Nick Fear and a collage of 2022 covers is on the centre pages.

Meeting Point Founded in 1976 by the Anglican and Methodist churches in Olveston, near Bristol.

**Meeting Point magazine and Meeting Point Directory are online at the
Community Website: www.olvostonandaust.com**

Thornbury Motors

- New and Used car sales
- Servicing, repairs and MOTs on all makes



thornburymotors.co.uk 01454 412535



Grovesend Road
Thornbury
Bristol
BS35 2EF



SAVAGE ASSOCIATES

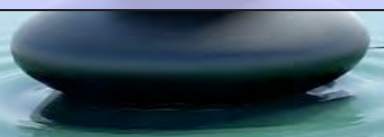
Accountants·Business Advisors
Corporate & Personal Tax Consultants

The Coach House, Aust Road
Olveston, Bristol BS35 4DE
Tel 01454 610388 Fax 01454 201541

for an initial consultation please contact:
edd.savage@savageassociates.co.uk

Vicarage Farm Holistic Therapy Centre

Bringing balance back
into your life.
Offering a wide range of
Holistic Treatments.



Hypnotherapy

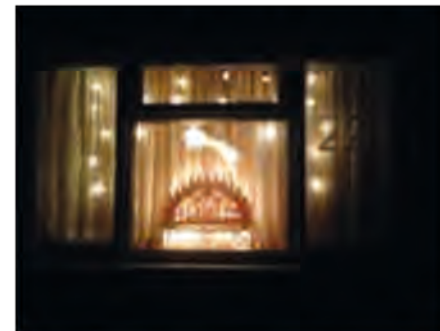
A safe and effective treatment: to
remove stress, anxiety, depression
and phobias. Allowing positive and
powerful changes in your life.

Tel 01454 614390
www.vicaragefarm.org

Advent Windows 2022

Look out for the Living Advent Calendar, which will be on view throughout Advent in our villages. Each day a new window will be lit up and stay lit until Christmas Day. We hope you enjoy them as you prepare for Christmas. Here's where they are:

1. Waypoint, New Road, Olveston.
2. 19 The Green, Olveston.
3. Alma House, Tockington Green, Tockington.
4. 47 Laxton Close, Olveston.
5. 2 Bramley Close, Olveston.
6. Herm, Haw Lane, Olveston.
7. The White Hart, Olveston.
8. The Wesley Rooms, Tockington
9. Orchard Lea, Vicarage Lane, Olveston.



10. Walnut Tree Cottage, Alveston Road, Old Down.
11. The Cottage, New Road, Olveston.
12. Hawthorn Cottage, Haw Lane, Olveston.
13. The Oasis Church, Old Down.
14. The White Hart, Olveston (2nd window!)
15. 12 Orchard Rise, Olveston.
16. Churchill Cottage, Vicarage Lane, Olveston.
17. 14 The Crescent, Old Down.
18. 1 Zion Cottages, Church Hill, Olveston.
19. 19 Orchard Rise, Olveston.
20. 13 Orchard Rise, Olveston.
21. Morton House, New Road, Olveston.
22. The Old Vicarage, Vicarage Lane, Olveston.
23. Travalan, New Road, Olveston.
24. St Mary's Church, Olveston

D. YOUNG
GARDEN SERVICES
Fully Qualified with over 16 years Experience
Grass Cutting Hedge Cutting Turfing Fencing
General Landscaping

Tel: 01454 416206 Mob: 07545 131488
Email: d.younggardenservices@hotmail.com

MD Aerials
Call Michael Dagger
T: 01454 418 341 M: 07817 304 236

Freeview – Freesat – Sky – DAB Aerials

Wall mounting LCD & Plasma
televisions setting up & tuning

mike@mdaerials.co.uk
www.mdaerials.co.uk

T. EDWARDS PLANT
Digger and Driver Hire

- Site/garden clearance
- Footings
- Drainage/soakaways
- Driveway preparation
- Stump removal
- Fencing & turfing
- Narrow access equipment

Price or day work t: 07900 372349
t.edwardsplant@gmail.com
CPCS/CITB qualified & insured

Divine
Bathrooms & Wet Rooms

07584 666154
Email: info@divinebathrooms.co.uk
Web: divinebathrooms.co.uk

iphe
Registered Plumber

S.J FARR
KITCHEN FITTING
SERVICES

Mobile: 07915673649

Our Associated Services Include:

- Plumbing
- Wall & Floor Tiling
- Decorating
- Plastering

City & Guilds Qualified

Geoff Gulliver
Carpentry & Joinery, Littleton
ALSO
UPVC Doors, Windows and
Conservatories. For a very
competitive **FREE** estimate

Ring (01454) 414947



December's Film

The film chosen for Monday December 5th might not, at first sight, seem very seasonal, but Christmas is all about reflection, remembrance, and nostalgia. Hence, the choice of a film which starts out in the mid-1950s and ends so sadly in 1977.

It is so easy to forget the impact made by a Mississippi teenager, 65 years ago, who literally changed the world with his music and movements. Until that time there was jazz, Frank Sinatra, Perry Como and Doris Day, but nothing which made you want to dance! Then along came.....and rock'n'roll was born. So put on your 'Blue Suede Shoes', 'Rock On' to St Mary's church and get 'All Shook Up' re-living your teenage years.

Doors open at 7pm, film starts at 7:30, licensed bar, tea and coffee, free admission (though we always welcome donations) and everybody - and we mean everybody - is welcome.

Friends of St Mary's

The prize winners in the November draw, held on 3rd November 2022 were:

Amount	Number	Name
£150	325	Mrs M James, Olveston
£75	352	Mrs V Brown, Olveston
£50	448	Mr M Belsten, Olveston
£25	184	Mr R Riggs, Almondsbury
£25	363	Mrs J Hahn, Olveston
£25	300	Mrs J Rawles, Olveston
£20	150	Mr G Williams, Olveston
£20	457	Mr S Webb, Olveston
£20	612	Mrs S Fairhead, Oldbury-on-Severn
£20	536	Dr & Mrs M Wright, Olveston

If you are not yet a member and wish to join the lottery, please telephone Andy Phillips on 01454 614890 or email andisp28@hotmail.co.uk.

A very Happy Christmas and a Healthy New Year to all our members and prospective members. Thank you for your support throughout 2022.

Our newly extended stylish Thornbury Showroom now offers a Cash & Carry service

We have lots of carpet and vinyl remnants – are you looking for quality flooring at greatly reduced prices?
Why not pop along and see what we have in stock.

We offer FREE home visits, measures and quotes

**LAMINATE | CARPETS | VINYL | ARTIFICIAL GRASS
READY TO TAKE AWAY ON THE DAY**

**Phoenix Flooring
Limited** 

Unit 15 Hemingway Business Centre, Walker Way,
Thornbury Bristol BS35 3US
Opening Hours: Mon to Sat 9am – 5pm



Robinson Crusoe and the Pirates



Pilning Village Players present a pantomime by
Alan P. Frayn
Pilning Village Hall
30th November to 3rd December 2022
Weekdays 7.30pm
Saturday 1.30 and 6.0pm
Tickets £7 and £5

Action-packed, original and funny, this exciting, colourful version of Robinson Crusoe and the Pirates offers a lively, vibrant and fun-filled production for our 2022 pantomime. Buckle your swash, raise the anchor and set sail with Robinson, Captain Seasalt and Nutty Nick into a world of adventure and hilarity. You'll meet a host of colourful characters along the way, including man-eating cannibals, magical beings and a band of marauding pirates, led by Cut-Throat, Cross-Bones and Skull-Duggery.

Staging the opening scene in Brazil (*unlike Hull, York or Plymouth in most other pantos*) has the advantage of introducing tropical scenery, glitzy costumes and Latin music, not to mention a delicious Dame – Señorita Margarita Juicilita! It also offers the bonus of an exciting Mardi Gras Finale! We'll have you dancing in the aisles!

On the right: Maddie Lewis, from Pilning, who is playing the Fool's role, the son of the Dame.

Why not book your tickets now? 01454 633786 or

Villageplayerspilning@gmail.com



2 Men Went To Mow

All Aspects of Garden Maintenance, Plants & Shrubs Supplied, Garden Rubbish Removal, Fully Insured

Garden and Tree Service Tel: 07956 311901
Local, Friendly and Reliable Email kev@2menwenttomow.co.uk

Tree Surgery (NPTC Qualified)
All Types of Tree Work Undertaken
Contract Grass Cutting
Beds & Borders Maintained
Pruning and Hedge Cutting
Planting

FREE ESTIMATES!

L. & J. Gulwell
Family Funeral Directors

1 Quaker Lane,
Thornbury
BS35 2AD

Local independent family funeral directors
for over 50 years

Specialists in bespoke funeral services, burials,
cremations & pre-paid funeral plans

Call 24hrs 01454 418 779 • www.funerals.uk.net

COMPANION AND DRIVING SERVICE

Driving Miss Daisy
We're There For You

Now taking bookings in your area!

- For people of all ages unable to drive but wish to remain independent
- Supported trips to the doctor, hospital, shops, bank, hairdresser, vet, etc.
- Social outings, holidays, help at home and much, much more
- DBS checked and First-Aid trained
- Dementia friendly
- Wheelchair Accessible Vehicle
- Fully Licensed

To book your Daisy
07951 079 558 / 0333 014 6211
northbristol@drivingmissdaisy.co.uk
www.drivingmissdaisy.co.uk

Top quality Nursing and Residential Care

Beech House

Beech House Care Home provides excellence in all aspects of care for all our residents, offering the best in nursing care for the elderly and residential care for people with a diagnosis of dementia.

Our unique care service includes:

- beautiful gardens
- purpose built homes with 24/7 air circulation
- spacious rooms and wide corridors
- top quality chefs
- television with DVD and telephone in each room
- wheelchair provision at no additional cost
- high technology baths and walk-in showers
- regular minibus trips
- programme of interesting and stimulating activities

RECENTLY RATED Outstanding by Care Quality Commission

To arrange a visit, telephone **01454 412266**
For more information see www.bristolcarehomes.co.uk

Bristol Care Homes
providing a unique care service

News from St Mary's



Christmas Coffee Morning

Saturday December 3rd 10am-12pm
Take a break from your Christmas preparations and come along to St Mary's for coffee, mulled wine, mince pies and Christmas music.

Salvation Army Concert

Sunday December 11th 4pm

Easton Salvation Army Brass Band returns for a Christmas Concert at St Mary's Church. All welcome to this special concert - a perfect start to Christmas. Donations to the Salvation Army.

Refresh

Saturday December 17th at 4.30pm

Our group from Refresh that meets at St Mary's on Saturdays, will be telling the Christmas story. Please come and join us. Following this we will be carol singing around the Advent Windows in the village

Christmas Carols in the White Hart

Friday December 23rd starting at 9pm

Come along and join us for our Christmas singalong with the choir.

For details of all our Christmas services, please see St Mary's services in the Church News section of the magazine.

Brownies' Activity Weekend

Olveston Brownies enjoyed a very busy activity weekend away in October when we stayed near Caldicot castle. Here is a summary in the words of several of our Brownies.

We had a great time playing tag rugby out in this massive field and then afterwards we had sweets from the tuck tin!

It was such fun staying and going to visit Caldicot castle. We did such a long walk over lots of bridges and saw horses and dogs. The best bit was the dungeon, seeing the dead person down there (mannequin!) and the murder holes!

I enjoyed every single bit of it the weekend was based on the film Shrek which we watched. I liked it when at the end of the film we all got up and danced

www.olvestonpreschool.co.uk/pilning-site

Pilning Pre-School

NOW OPEN!

Offering amazing childcare to children aged 2-5 at the heart of our local community.

Pilning Village Hall
Open 9:00am - 3:00pm
Tel: 01454612074

Find us on Facebook

around the hall. It was a lot of fun, and the food was great and the whole weekend was Shrek themed, so we had to eat Shrek swamp pizza and Princess Fiona salad! We did lots of cooking where we made gingerbread men and fairy cakes. It was amazing. We also did singing outside round the campfire where we had marshmallows and smores. Yummy! Shrek wore big green ears all the time, but she didn't get much sleep she said!

We stayed in a hall and it was all Shrek themed and 'The Dragon's Lair' was where we slept, the kitchen was called 'The Cave' and the toilets were called 'The Swamp'! I liked the sleeping bit as I got to sleep this time as I warmed up to sleeping on my air bed and I liked sliding across the floor in my sleeping bag!

The music was really good, we sang every time we washed up and we had to be waitresses in turn. We had to say what would you like to eat and then we went to get their food from the cave's serving hatch. I liked helping in The Cave too doing lots of cooking. We also made fairy glass jar lights which were so cool and pretty. We could decorate them with so many lovely bits of ribbons, lace and flowers, and we got to take them home.

The most important thing was that everyone joined in with everything and we all worked well together as a team, so everyone had great fun! I'm definitely going away on the next adventure with Brownies!

YOU ARE INVITED TO THE

FOOS CHRISTMAS MARKET

FRIDAY DECEMBER 2ND
5.30-8PM AT OLVESTON SCHOOL

EVERYONE IS WELCOME TO COME ALONG AND GET INTO THE FESTIVE SPIRIT!

ENJOY CHRISTMAS MARKET STALLS, FOOD, DRINKS, MUSIC AND EVEN JOIN IN WITH SOME CAROL SINGING!

IF YOU ARE A LOCAL CRAFTER OR STALL HOLDER AND WOULD LIKE A TABLE, PLEASE CONTACT
FOOSPAT@GMAIL.COM FOR MORE INFO- THANKS



PawsPetCare
...simply for the love of animals

Providing care for your pets
when you need it

Contact Helen for a friendly and reliable service
07493 153520 or enquiries@pawspetcare.com
www.pawspetcare.com

Frontline Martial Arts

Traditional Martial Arts / Taekwondo

Mighty Mites (under 10's): Fridays 4.30-5.15pm at
Juniors (ages 10-13): Mondays 7.15-8.15pm
Adults/over 13's: Mondays 8.15-9.45pm
at Alveston Youth Centre



Tel: 07771 692222
www.frontline-ma.co.uk

SEVERN SIDE TAXIS

SIX SEAT COMFORT
AIR CONDITIONED CAR



AIRPORTS
BUS STATIONS

HOSPITALS
EVENINGS OUT

RING STEVE WARD
07879 601011

THE WHITE HART INN Olveston



Traditional 17th Century English Pub

Catering for Parties and Functions
Wide variety of cask & keg beers
Skittle alley & pool table available
Book now for Skittle Matches
Award winning courtyard garden

Telephone: 01454 612175

FRANCIS DESIGN & BUILD Carpentry & Building Services

For all aspects of carpentry

Doors, Skirting, Kitchens, Fencing,
Decking, Stairs, Timber frame etc.

Call Craig on 07970 514409
(or, if busy)

email: craigyoung0308@live.co.uk



Olveston Parish Council

Pat Savage

Pavement Parking

This continues to be a problem, particularly in Olveston. The Council advises that where a parishioner identifies what is termed 'illegal parking', can they please take a photo and forward it to the clerk@Olvestonparishcouncil.go.uk?

Community Grants

Grants for the six months ended 30th September were awarded to the following:

Olveston Parish Players	£800
Friends of Marlwood School	£600
Olveston Parish Queen's Jubilee Celebrations	£1,750

Olveston Play Area

Martin Gibson gave a very detailed account of the play area in the October Meeting Point, when he outlined our future plans. We hope to incorporate some of the designs of the equipment which was installed at Old Down in 2021, together with some new pieces. There is even talk of having some adult equipment! We are planning an open morning at the Parish Hall when the proposed plans will be available:
Saturday 17th December 10.30 to 12.30
Refreshments will be served.

Hardship Funds

South Glos. Council continues to offer support to those in need and who have been affected by the rise in the cost of living and the high energy costs. Please access beta.southglos.gov.uk for details.

Season's Greetings

On behalf of the Chairman and the Council we wish all our parishioners a very Happy Christmas and a Prosperous New Year.

Severnside Heating & Plumbing



- Installations
- Servicing
- Repairs

Working locally since 2003. An experienced heating and plumbing engineer. For a no obligation quote please call Mike
Mob: 07554 825813 Tel: 01454 613780



LA

Electrical Services

YOUR LOCAL ELECTRICIANS

New Builds, Rewires, Consumer Units, EV Charge Points, Landlord Reports (EICR), Testing & Inspection, Sockets, Lighting, CCTV, Security, Solar and Battery Storage & much more

f t i /laelectrical

01454 633 336

LAELECTRICAL.COM

Baby and Toddler Music!



Have fun and enjoy music with your child
Meet others and share music as well as a cuppa and maybe cake
Suitable for ages from 0-4 with a supporting adult of any age

10:30am Wednesdays in Severn Beach Village Hall

£2-5 for an hour session dependent on numbers

FFI Contact Janet Harrison janet_harrison@outlook.com or 07562 212435 or turn up to a session



**"The Friendly pub
where you arrive as
our Guest and leave
as our Friend"**

BOARS HEAD AUST

01454 632278

- Your local friendly Village pub
- Open 7 days a week
- Food Served from 12.00pm to 9pm every day
- 1st Friday of the month is Quiz Night
- Breakfast Available
- Chefs Table Food Experience
- Parties Catered for
- Open Log Fires
- Real Ales and Premium drinks available
- 5 star Food Hygiene rating

MAIN ROAD, AUST, BS35 4AX

The National Coastwatch Institution (NCI)

A Volunteer Coastwatcher

'All Stations, All Stations

This is Nells Point NCI, Nells Point NCI

The Station is Now Open Until 20.00hrs Local Time

Listening Watch Channel 65

Nells Point NCI Out'

With these words transmitted on VHF Channel 65 to all vessels using the Bristol Channel, another watch commences at the Nells Point NCI station. For the next ten hours pairs of well-trained watchkeepers will be keeping a visual lookout across a swath of the Bristol Channel from their base at Nells Point, Barry. NCI watchkeepers provide the eyes and ears along the coast, closely observing all vessels and water-users, monitoring radio channels and providing a listening watch in poor visibility. When people get into trouble, the NCI is there to alert HM Coastguard and direct the appropriate rescue services to the casualty.

There are nearly 60 NCI stations situated around the coast of the United Kingdom, with over 2,600 volunteers giving up their time to act as watchkeepers or support workers. Nells Point is the nearest NCI station to the Meeting Point area, and the one the author of this brief article works from. From the observation tower at Nells Point a commanding view can be obtained across the Bristol Channel, covering an area from Sand Bay, near Weston-Super-Mare to Minehead, the islands of Flat Holm and Steep Holm and the Welsh approaches to Barry Roads.

It's a busy stretch of water, particularly during the summer months and on Bank Holiday weekends, when thousands of people flock to the beaches around Barry Island, using anything that floats to carry unsuspecting people out into the vicious currents of the Channel – with the second highest tidal range in the world (14 meters Spring tides). Meanwhile, large numbers of leisure and commercial vessels plough their way up and down the Channel, making the seaway a very busy place indeed.

High technology and sophisticated systems such as radar and telecommunications have vastly improved safety at sea, but there is no substitute for a watchful pair of eyes. Accidents do happen and a computer or technology cannot spot a distress flare, an overturned boat, a yacht with problems, a water sports enthusiast in difficulty, children or adults in trouble, or a possible pollution incident. This is why our lookouts and watchkeepers are

Seasons Greetings

Personalised Christmas Cards
Choose a design you like and send us your photo and wording.
Pack of 10 cards for £9.99

A4 Personalised Calendars
Just send us 12 images and we'll professionally print them.

£12.00 for 1
£20.00 for 2
£25.00 for 3

01454 631289
info@motionprinting.co.uk
www.motionprinting.co.uk

motion
motiondesign&print

ALMONDSBURY PHYSIOTHERAPY AND SPORTS INJURY CLINIC

Louise Brinson
Chartered Physiotherapist, hpc reg

Almondsbury Surgery, Sundays Hill
Almondsbury, BS32 4DS

Tel: 07786915442
Fax: 014540615745
E-mail: physiolouise@hotmail.co.uk

Also at Aztec Spa Leisure Club

Olveston and Tockington

Parish Hall
07780 515317

A great venue for :

- Fitness
- Parties
- Public events
- Music & Dance

Check availability & book online at www.olvostonparishhall.co.uk

"Our newly decorated Hall"





ACE1

Window & Gutter Cleaning

Window Cleaning

Gutter Cleaning & Repair

Fascia & Soffit Cleaning

Conservatory Roof

Solar Panel Cleaning

Power Washing

M: 07590 201264
T: 01454 436162

 Gleaming Insurance

an important service provider to all those people who use our coastal waters and coastlines.

Nells Point station is manned by a team of 52 fully trained and dedicated volunteers who keep a daylight watch 365 days a year. The station is equipped with a range of telecommunication and other instrumentation to monitor shipping movement on the Channel, including VHF radios, AIS and radar vessel monitoring, high-powered binoculars and weather forecasting and recording equipment. Close contact with the Maritime Coastguard Agency (MCA) at Milford Haven is maintained at all times, and the station is an integral part of the National Search and Rescue Service.



The watchkeepers at Nells Point come from all walks of life and offer a wide range of skills and experience. A maritime background is not deemed essential, though the ability to remain vigilant, act swiftly and decisively, cope with pressure and remain calm at all times is required. Full training ensures that all our

volunteers reach the high standard expected by NCI and MCA. Regular crew assessments take place and refresher training programmes are conducted to keep watchkeepers up to date with the latest legislation or new operational procedures.

Our surveillance work is mainly routine but watchkeepers are trained to act in an emergency, report to the MCA and, if required, coordinate with other search and rescue services, including our local RNLI stations. Watchkeepers provide an emergency contact point on land for both sea and shore users.

A log of all water-based activities is kept during each watch and, when requested, weather conditions and sea state can be passed to vessels at sea or those who are about to partake in water sport activity. During each watch those categories of water-user deemed as vulnerable are closely monitored, for example swimmers, paddle boarders and canoeists. The Bristol Channel with its unforgiving currents needs to be treated with respect at all times.

The nearby Sully Island needs constant attention as the causeway leading to it is covered by deep and fast flowing water for three hours either side of high tide. Despite numerous warning signs highlighting the danger of crossing the

Bristol Carriage Masters

- Religious or non-religious funerals
- Bespoke funerals for burial or cremation
- Fully guaranteed pre-paid funeral plans
- Direct cremations



177 Crow Lane, Henbury, Bristol, BS10 7DR
Telephone: 0117 950 8066
Website: www.bcm-funerals.co.uk
Email: admin@bcm-funerals.co.uk

Windmillcare Homes

— great places to Live



Windmill House

The original, elegant home in a delightful rural setting with 2 acres of beautiful gardens delivering unrivalled care

01454 413818



OSBOURNE COURT

Our brand new purpose-built home providing exceptional specialist dementia care in the heart of the village of Stoke Gifford

0117 944 8700

**Residential, Short-term Respite
and Day Care available**

enquiries@windmillcare.com

or www.windmillcare.com

TOCKINGTON OSTEOPATHY

HELPING YOU BACK TO HEALTH

Effective Treatment of:

- Back and Neck Pain
- Arthritic and Rheumatoid Pain
- Joint Pain and Injuries
- Sciatica and Trapped Nerves
- Tendonitis and Muscle Injuries
- Tension Headaches

Please call on **07870 219249** or visit our website www.tockingtonosteopathy.co.uk to make an appointment or discuss how we can help.

Run by Natalie Gladstone - over 20 years' experience.

Easy parking on site - all major health insurances covered.

Old Down Hill, Tockington, BS32 4PA.

causeway on a rising tide, most months individuals or groups of people get cut-off and are stranded on the island. This means a call by Nells Point watchkeepers to MCA, with the next step being the launching of the Barry Dock or Penarth lifeboat on a rescue mission.

For those interested in learning more about the NCI the following link may be of interest: <https://www.nci.org.uk>

Carols on the Green



Wednesday December 21st 6.30pm, Tockington Green

Come along with family and friends to Tockington Green, to sing along to carols and Christmas songs under the stars! Bring a torch or lantern and a mug if you would like some mulled wine. Tockington Church will be providing mince pies, teas and coffees. Bring an umbrella if it is wet!

We have lost several dear friends from Tockington recently and therefore we have chosen St. Peter's Hospice to benefit from donations, which can be made with cash on the night.

Any donations of mulled wine or a gazebo, would be greatly appreciated, to South View, or call Cath on 07740870418.

Tel: 01454 885766
Mob: 07724 166917

Ridge

Roofing and Property Maintenance

Roofing ❖ Chimney Repairs ❖ Lead Work
Guttering ❖ External Painting
General Maintenance ❖ **FREE Estimates**



D-CR

DOMESTIC APPLIANCES



DOMESTIC APPLIANCE REPAIR SPECIALIST

- WASHING MACHINE
- TUMBLE DRYER
- DISHWASHER

- FRIDGE FREEZER
- COOKER
- HOB OR HOOD

**Fast, friendly and efficient service
Sales - Service - Repair**

Tel: 01454 850522 - Mobile: 07917441539
Email: d-cr@live.co.uk - Web: www.d-crdomesticappliances.co.uk

EARTHWORKSUK

We offer a range of recycled and quarried products including 6F5, type 1, topsoil and decorative stone. These can be delivered straight to you on site or collected from us at our yard in Grombail. Check out all we can offer you on our website or contact us using the details below.

Skip Hire

Top Soil

Recycled Aggregates

Grab Lorry Hire

Tipper Hire

info@earthworksuk.co.uk www.earthworksuk.co.uk
Orders Line: 07782472727
Bristol: 01179 828265 - South Glos: 01454 501037




Lending with Heart and Mind

South Gloucestershire Council fund
a not-for-profit loan scheme for homeowners
and landlords*.

We understand the expense of maintaining
your home and we work with you to take the
stress out of funding repairs, improvements or
adaptations.

We see you as an individual, not a credit score.
Our knowledgeable team of advisers will guide
you through the process of applying for a home
improvement loan.

For a no-obligation assessment
or more information visit
www.lendology.org.uk or call 01823 461099

Heatherton Park Studios, Bradford on Tone, Taunton, TA4 1EU

*subject to eligibility

Brush Up Your Shakespeare!

Rehearsals are well underway for The Parish Players' next production. 'Kiss Me, Kate' will bring light and colour to the stage at Olveston Parish Hall (Upper Tockington Road BS32 4LQ) at 7.30pm on Wednesday 15th to Saturday 18th February 2023 (half term week).

Once again, Linda Evans is skilfully directing the show – a much-loved musical comedy, which will mark its 75th anniversary in 2023. It tells the story of divorced actors Lilli Vanessi and Fred Graham, whose off-stage relationship closely shadows their on-stage roles in a production of 'The Taming of the Shrew'. Confusion and conflict combine as the couple's Shakespearean performance merges into their backstage disagreement. If that wasn't enough, the cast is joined by two ham-fisted gangsters, determined to recover their boss's gambling winnings.

Parish Players present

noda
Musical Theatre

Kiss Me, Kate

Music and Lyrics by
Cole Porter
Book by
Sam & Bella Spewack



**Wednesday 15 to
Saturday 18 February
7.30pm**

**£10 Adults
£7 Children
£12 Premium
Bookings from 14 Jan
on 01454 202011**

At the Parish Hall, Tockington

This musical adaptation of 'Kiss Me, Kate' is presented by arrangement with
Lionel Lincoln, Ltd. and the estate of Tams Wright LLC. www.lionelthelibrary.co.uk

Of course, 'Kiss Me, Kate' is perhaps most famous for Cole Porter's memorable lyrics and music, and you can look forward to enjoying fantastic renditions of famous songs, under the experienced musical direction of Chloe Allsopp-Jones. They include the unforgettable 'Too Darn Hot', 'Brush Up Your Shakespeare', 'I Hate Men' and 'Another Op'nin', Another Show'. We are also excited to welcome our new choreographer, Jo Baxter, who is putting the cast through their paces.

Tickets go on sale in January (details will be in the next issue of Meeting Point), so write the dates in your diary now and watch out for more information.

It's not too late to get involved.
Back stage help is always

welcomed, to work on the scenery or costumes, or, in show week, to be part of the stage crew, manage the props, or join the front of house team.

You can contact us via secretaryparishplayers@gmail.com or, alternatively, via our Facebook page at www.facebook.com/OlvestonParishPlayers.

LINELA

embroid | print | promote

One place for everything promotional.
Specialising in embroidery,
printing and branded gifts



T Shirt Printing
Sports wear
Work wear
School wear
Promotional Products

Call us: 01454 615300

Email us: sales@linela.co.uk

www.linela.co.uk



Livewire Electricals
Electrical & Mechanical Solutions



Domestic, Commercial
and Industrial Installations

All electrics for new build, extensions and alterations to satisfy mandatory Building Regulations. Landlords safety inspections
Portable Appliance Testing (PAT)

Electrical and electronic service and repair
For 24 hour call-out service available please call Peter Jones: Tel: 07880 858785

Email: pete.livewire@blueyonder.co.uk

Local number Tel: 01454 613482

Visit our web site at
livewire-electrics.co.uk

BonneFreshClean
Carpet & Upholstery Cleaning Specialists

Love the look and smell of clean and fresh carpets and upholstery?

Bonne Fresh Clean brings to you a professional carpet and upholstery service that will leave them sparkling and fresh.

Call for a free no obligation quote today!

- Thorough, gentle deep cleaning, no residues
- Child and pet friendly treatments
- Latest industry approved qualification and full insurance



Bonne Fresh - Relax and enjoy beautifully clean and fresh carpets and upholstery!

T: 01454 436001 M: 07774 908410

W: www.bonnefreshclean.co.uk

44 Townsend Lane, Almondsbury, Bristol, BS32 4EQ

Cookin' On Gas Ltd



Repairs & Sales of all domestic appliances:



Gas & Electric Cookers and Hobs
Washing Machines, Dishwashers
Tumble Dryers

www.cookinongas.co.uk
enquires@cookinongasltd.co.uk

Matt Cole
1 Olive Gardens Tel 01454 851545
Alveston Mob 07715 705670

Old Down Cricket Club

Tony Gardner

150 Club Winners November 2022

£50 Bill Finch
£15 Roger Riggs
£5 Reg Purchase

Latest £25 Bonus Ball Winners

22/10/22 Roger Riggs
05/11/22 Roger Riggs

Up the Down!

Thanks from CRUK

Cancer Research UK raised a fantastic total amount of £3342 (inclusive of £750 pre-sales) at our annual Autumn Fair held at St. Helens School, Alveston on October 22nd.

The Committee would like to thank all our local supporters who attended and those who gave so generously by purchasing crafts, books, preserves, teas and cakes.

St Mary's Flower Rota

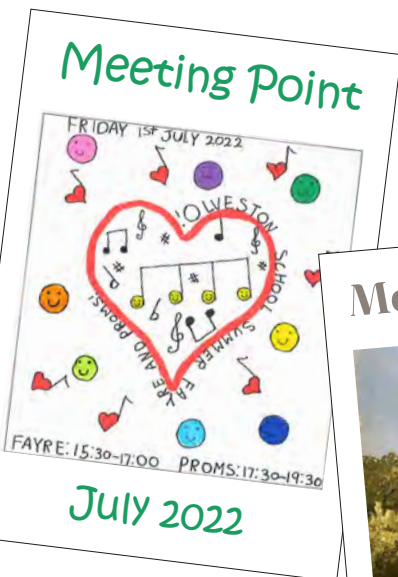
The flower group at St. Mary's, Olveston is looking to recruit new members to join the team. Briefly, it involves putting flowers in church once or twice a year, so isn't an onerous commitment.

If you are interested and would like to find out more about what it involves, please contact Avril Harley on 01454 418185.

Olveston and Tockington WI

Angela Green

We in the WI are looking forward to our Christmas Party on December 13th, with entertainment from the light music group, Frets and Fingers, a grand raffle and some lovely things to eat and drink. Happy Christmas everyone!





Delivering the highest standards of homecare in South Gloucestershire for 18 years

Premier Homecare is the leading homecare provider in North Bristol and South Gloucestershire, having cared for over 2,000 families, ensuring they are safe, healthy and looked after

- Short and long term home help
- Flexible hours
- Bespoke care support
- Highly trained and reliable carers
- Personal Care
- From cleaning to 24 hour Live-In care

Call today for help with a loved one

PREMIER HOME CARE

0117 959 2013
www.premier-homecare.com

Inspected and rated
Outstanding ☆
Care Quality Commission

good care guide
★★★★★

Great British Care Awards
2016 WINNER



el cuisine

Catering for any occasion
Private parties, Birthday and Anniversary Celebrations,
Weddings, Funerals, Corporate Events,
Formal Dinners, Shoot Lunches... whatever the occasion

www.el-cuisine.co.uk Please contact Emma 07931952939 info@el-cuisine.co.uk

Tockington Manor School and Nursery
for boys & girls aged 2 - 13

Discover our

- Family approach to education
- Envious Senior School entry
- Year 7 & 8 Pathway Programme
- Wrap-around care
- Small friendly classes
- Excellent facilities





Book your private tour at a time convenient to you
01454 613229

TOCKINGTON MANOR SCHOOL AND NURSERY
TMS

A Cost of Living Crisis, Inflation, a Collapse in the Value of Sterling, War in Ukraine.....

What to do? The simple answer is to join the u3a Thornbury Investment Group 1 Club and share the pain. The Club meets at 10am on the second Wednesday of each month in the Tockington Methodist Church to share views, knowledge, and expertise. The main aims of the Club are:

- **Social** - We meet in a local pub after monthly meetings for consolation, if our investments are not performing as hoped for, or to celebrate successes, so there is always an excuse for lunch and possibly a drink. We also meet with our other halves for a New Year's lunch and the awarding of prizes for the winners of club competitions.
- **Educational** - There are individual and group competitions, for example small groups meet separately during the year to compete in managing their group's fantasy portfolios, so no money involved. At the main monthly Club meetings one of the groups will present an economic and market review to be followed by a small number of individual presentations on proposals for potential Club investments plus periodic discussions or presentations on financial topics.
- **Investing** - Each member is expected to invest a relatively modest monthly amount in the Club's portfolio of investments. Members receive units in return that accumulate but which can be subsequently cashed in. Decisions on investing or selling club assets are made by club members who get one vote per person regardless of the number of units they hold. The aim is clearly to make a profit but also to learn about different types of investment. The purpose of this investment activity should therefore only be seen as a learning process as opposed to a core element of a member's personal finances.

Interested? You do not need to be an expert on financial matters, just somebody who is interested in investing and is prepared to contribute to the review of individual shares and to make a periodic proposal for an investment.

Why not come to a taster session by attending one of the Club's monthly meetings? If this appeals to you, please email our Chairman Bill Peters bill@onajourney.rest. We look forward to hearing from you.

'Indawes - Outdawes'
Decorating and Home Improvements
Painting | Wall Papering
Floor Laying

Martin Dawes 07720 509653
martin.dawes@live.com

Digger and Driver Available
Out-Door Services

A. D. D. PLANT

Groundwork, Digging & Clearing
Turfing, Any outdoor work

Tel: 01454 417372
Mobile: 07866 407683




The agent
for all seasons

keeping your garden beautiful...

ask us about **LAZYLAWN**

- LazyLawn - superior artificial grass supply and installation - licensee for Bristol & South Wales
- landscape design and build with 25 years experience
- tree surgery
- garden makeovers
- regular garden maintenance

Garretts Gardens and Landscapes

for Garretts Gardens or Landscapes
t 01454 614111 m 07974 109919
info@garrettslandscapes.co.uk
www.garrettsgardens.co.uk

Come rain or shine,
lisa costa estate agents have the experience and knowledge to take you smoothly through the moving process.



lisa costa

RESIDENTIAL SALES & LETTINGS

53 High Street | Thornbury | BS35 2AR
01454 279734 | sales@lisacosta.co.uk | lisacosta.co.uk

Please note: If your property is currently on the market, the terms and conditions of your Existing agency agreement must be considered before instructing ourselves.

The Railway Comes to Thornbury!

Olveston Parish Historical Society
Weds. 7th December 7.30pm. Methodist Church, The Street, Olveston
BS35 4DR All welcome! Pay on door. Annual membership: £10. One meeting: £3.

150 years ago, the railway finally arrived in Thornbury, to great rejoicing! Meg Wise, local historian and volunteer at Thornbury & District Museum, has discovered a huge amount of information about this. We can guarantee you'll hear some great stories about the coming of the railway and see photographs of the town you've not seen before!



Shown here is local historian Mary Bruton's illustration of the scene in Thornbury High Street on the day the railway opened. The mayor was pulled in triumph to The Swan Inn, following his arrival in Thornbury on the first train from Bristol. The Tockington Band featured prominently.



Here is Thornbury Railway Station in the Edwardian era. Meg will be pleased to tell you where the station was situated - and where it most definitely was not situated!

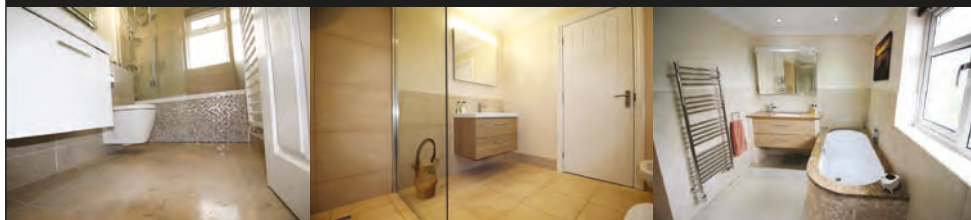
As an example of goods transported by rail, fishermen at Oldbury-on-Severn sent their salmon, packed in straw-lined baskets, for sale in Bristol, or for onward travel to be sold in London.

Come along and hear lots more stories! Meg will really bring it all alive.

Paul Whittaker

BATHROOMS & WETROOMS

DESIGN . SUPPLY . INSTALLATION



Tel: 07879 666221 . Website: www.paulwhittakerbathrooms.co.uk

Dunkley's

Chartered Accountants
30 YEAR ANNIVERSARY

HELPING YOU

MAKE THE RIGHT SOFTWARE
CHOICE FOR YOUR BUSINESS

TALK TO US ABOUT OUR CLOUD ACCOUNTING
SOFTWARE PACKAGES

T: 01454 619900 E: ADVICE@DUNKLEYS.ACCOUNTANTS
WOODLANDS GRANGE, WOODLANDS LANE, BRADLEY STOKE, BS32 4JY

How to Save Money on your Electricity Bill

Glynn Roylance

This is a very heavily abbreviated version of advice on the Thornbury Radio website as part of our December push on saving money on energy. Hopefully it gives you enough to stimulate your interest to read it at: www.thornbury.radio/electric

The Basics

First, we need to get you a bit energy-savvy. The aim is to try to identify things that are consuming energy unnecessarily and costing you money. So this is a balance of these factors:

- How useful/valuable is the energy consumption?
- How much power per hour is it using?
- How long is it on?

What can I do?

Step 1 – purchase a plug-in power meter device. There are loads on Ebay and Amazon at £15 or less or around £18 at Screwfix. You plug these between your device and the plug socket. They tell you how much power that device is using. They can also measure how much energy (units or kwh) that the device uses over a day, week etc. Armed with this device, get measuring! My advice is to measure things that are permanently plugged in. Typically, we want to find 'vampire' devices that are costing you 24 x 7 x 365. As a rule of thumb, at Oct 2022 prices, then the cost to you is £3 per watt per year. So, for example a 20watt Broadband/WiFi router is costing £60 per year.



Step 2 – purchase some smart plugs to automatically turn things off when they are not needed. You could use normal mechanical timer plugs, but smart plugs are now similar price (4 for £25) and they don't time-drift. Also, they can easily be checked and turned on/off remotely by a smartphone app.



PINPOINT

Aerial Drone Imagery

Fully Insured & CAA Qualified Drone Pilot
Ideal for Photos & Video of Land & Property
Call Neil: 07986 162088





Legal advice that brings balance to life

Award winning legal advice to help you navigate change and plan for the future.

gl LAW

Let's talk about you or your business www.gl.law 0117 906 9400

BUSINESS SERVICES · PROPERTY · DISPUTES · FAMILY LAW · WILLS & PROBATE

- All makes servicing and repairs
- Petrol and Diesel MOT Testing
- Tyres, Exhausts and Batteries
- Air Conditioning
- Latest Bosch On-Board Diagnostics
- Vehicle Sales



GREEN LANE GARAGE
OLVESTON

New Road, Olveston, BS35 4DX
01454 202030

the Good Garage Scheme 

When you rampage around your house with your power meter you may, or may not, get results like we found in our house:

- Phone chargers – 0 watts when not charging a phone. Forget worrying about them unless they are warm, in which case you will definitely measure more than 0 watts!
- Dishwasher – ours uses 7w continuously when not being used. That's £21 a year for no useful purpose. We now turn it off until we want to use it!
- Satellite receiver and audio-visual systems. Sometimes these can be using 30-40watts on standby – that's £90-120 per year at Oct 2022 prices – a definite target to switch off overnight!
- Some Old Wives' Tales
 - TV on standby. I've never found a TV that uses more than 1 watt on standby – that's £3 a year at October 2022 prices. Not worth worrying about
 - Turning off fridge overnight. NO! It will just warm up and have to work extra hard the next day to cool down again. If you really need to save on refrigeration costs, consider increasing the temperature setting to, say, 15C for the freezer and 5C for the fridge (NB: at your own risk - this may not comply with food hygiene recommendations.)
 - Hot water flask. Some people advocate filling a flask with boiling water in the morning to use throughout the day for making tea/coffee. Silly idea because a) it will not stay boiling and b) it will not use any less energy than boiling what you need each time. Plus, there is a big risk you will not use it all and so waste energy by tipping away warm water at the end of the day.

Summary

I've recently completed this exercise around our house. I estimate we are now saving £400 to £500 per year, a 10-15% reduction in our (high) overall usage. This results in a smaller carbon footprint and if repeated in every household could reduce the chances of power cuts this winter.

Loads more advice can be found on the Thornbury Radio website:
www.thornbury.radio/electric



XL Plumbing & Heating Solutions Ltd

- General Plumbing
- Boiler Installation, Servicing & Maintenance
- Gas Safety Certificates
- Bathroom Installation & Tiling

Contact Mark Mob: 07738 726803
Email: xlplumbing@hotmail.co.uk
Tel: 01454 549008
Web: www.xlplumbing.co.uk



gsharchitects



FREE CONSULTATION

For further information please contact us on:
info@gsharchitects.co.uk
www.gsharchitects.co.uk
 Almondsbury, Bristol

07780 000220

Build without planning permission

Quality design service from concept to completion

Planning, construction drawings and contract administration service tailored to suit you

Domestic, Commercial, and Sustainable Architecture.

Experienced working with Listed Buildings

Build your dream home in your garden

Development Advice and Appraisal

3D Visualisation Services

RIBA

Beauty at the Barn

4, Grey Gables, Vicarage Lane, Olveston
 For appointments telephone Nicola on
 01454 201717



Jessica Manicures

GEleration Nails

Shellac Nails

Jessica Pedicures

Spray Tanning

Waxing

Ear Piercing

Eyelash Perming

Eyebrow Shaping

Eyelash tinting
 And more....

Evening appointments available

Gift vouchers available



Olveston & Tockington
 Tennis Club

"Your local tennis club, next to Olveston Parish hall"

Make 2022 the year to get back on court.

Coaching for all ages.

Fabulous clubhouse with changing facilities, kitchen, TV and table tennis.

Call Martin 07720509653

Everyone welcome

New Passage Cat Kennels

Large Runs ~ Heated Chalets
 Licensed Cattery
 in Pilning

Tel: 01454 632 456
www.catkennels.co.uk



Design & Planning

Home Extensions - Change of Use - Floor Plans
 Full Planning & Building Regs drawing service
 Almondsbury based with successful local projects

contact Julian Lowther for friendly professional advice

t:0117 2591059 julian@jfl-planning.co.uk
 m:0789 0179546 www.jfl-planning.co.uk

G.V.R PITCHER & SONS

The Yard
 Haw lane
 Olveston
 Bristol



TEL: 01454 619299
 MOB: 07989 208964

Property Care & Improvements



Tel: 07887 652358
 Jed's N.E.A.T. Services
 (Nose Everything About Technology)



If you're treating someone to an XBOX, mobile phone, tablet or any other 'tech' this Christmas, I can help you get set up so there's no disappointment on the BIG DAY!

If you need help choosing what's best on the market for your requirements, or if you are having technical issues at home and just want some advice, I'm your man..... I offer help:-

- AT HOME – I can come to you
- IN PERSON – we can meet at Curry's PC World / John Lewis / Apple
- VIRTUAL – I can offer technical assistance over the phone / Zoom / Facetime

** I come highly recommended by many local villagers **

PRICING POLICY – Please just pay me what you think it's worth – SIMPLE

My name is Jed Williams, I'm 17 and live in Easter Compton
 I study IT at SGS College, Filton – I've had my own business helping local villagers for over 4 years
 Email: help@myneat.co.uk - Mob: 07887 652358 - Landline: 01454 406000 - Web: myneat.co.uk

*** TECHNICAL SUPPORT FOR YOU – AT HOME ***

CAR - VAN - MINIBUS

**SELF DRIVE - LOW-COST - SHORT/LONG TERM
WIDE VEHICLE SELECTION - CONTRACT HIRE**

- Fully Comprehensive Insurance
- Extra-Low Off Peak Rates
- No Hidden Charges
- Breakdown Cover
- Cars
- Minibuses
- Transits
- Sprinters
- Lutons & Tail Lifts

THORNBURY SELF DRIVE HIRE

Established Over 20 Years

www.tsdhire.co.uk
Mob: 07768 232424
Email: info@tsdhire.co.uk

01454 414111

COOPER ROAD, THORNBURY IND. EST., THORNBURY, BRISTOL BS35 3UP

THORNBURY AUTOBODIES

Car & Commercial Body Repairs

- Crash Repair • Re-Sprays • Dent Repair
- Spray Booth Facilities • Full Body Jigging • Recovery
- Top Standard Of Work
- Fully Insured
- Insurance & Private Work

Courtesy Vehicles • Free Estimates • Over 25 Years Experience

THORNBURY
01454 419985

Email: thornburyautobodies.ps@gmail.com www.thornburyautobodies.co.uk
Cooper Road, Thornbury Industrial Estate, BS35 3UP

WJC

Plumbing & Tiling

Bathroom & Wet Room Design & Installations
Tiling • General Plumbing
Kitchen Installation • Plastering

Billy Cook
WJC Plumbing & Tiling

07748 085 920
wjcpumbing@outlook.com

GreenForce



COP 27. Words need actions.

Sadly, at the conference in Egypt last month, the President Antonio Guterres revealed that very little progress is being made to reverse climate change and in fact emissions are still rising worldwide. Unless something is done very soon our planet will be consumed. At the moment we are on a cliff hanger. It is suggested that the way forward to achieve any results is with global collaboration.

Here is an A E I O U which could give hope for the future:

A	Actions
E	Emergency
I	Investment
O	Organisation
U	Urgency

Recycling

Special bags were distributed in the village recently for recycling soft plastic which is then collected with the kerbside rubbish. It is amazing how quickly a bag can be filled. This is another step forward in handling our waste which avoids it going into land fill.

Have you thought about taking the trouble to recycle all the trappings that come with Christmas? Look out for places to recycle the tree, cards and wrapping paper. Every effort made helps, however small. Merry Christmas

Alveston Gardens Association



Micronesian Adventure with Pam Forrest

Monday 5th December 2022

At 7.30pm in Alveston Jubilee Hall

All welcome – Visitors £3



GARDEN MACHINERY SPECIALISTS
SALES, SERVICE AND SPARES

E-MAIL: themowerdoctor@hotmail.co.uk WEBSITE: www.themowerdoctor.net
ADDRESS: Unit 2-3 The Rearing Unit, Oldbury Lane, Oldbury-On Severn, BS35 1RF
TELEPHONE: 01454 411 701







DEALERS FOR:








PHYSIOTHERAPY
CHIROPRACTIC
PODIATRY
CHIROPODY

"Optimise your Health"

Please Enquire:

Tel: 01454 528608
Email: info@optimuscp.com
Web: optimuscp.com

11 The Plain, Thornbury, BS35 2AG

OLDOWN
TREE SURGEONS

TREE SURGERY AND HEDGE MAINTENANCE

PROFESSIONAL. QUALIFIED. FULLY INSURED.

www.oldowntrees.org

Antony Leicester 07800512408 info@oldowntrees.org



Computer support and solutions for the home and business user.

- PC/laptop repairs
- Virus removal
- Wifi/broadband issues
- Sponsors of Olveston FC

EC COMPUTERS

How can we help? Tel: 01454 281 500 Web: www.eccomputers.co.uk

IT Support/Repairs Office Equipment Print Solutions Telecoms Cyber Security Managed Services Software/Database applications



Ali Baba and the 40 Thieves

It's Panto time again - oh yes it is!, Octopus Drama Group has the perfect antidote to the winter weather and the energy crisis! Written by local playwright and author Steven J Yeo, Ali Baba is a totally new and refreshing

take on the beloved story of Ali Baba and the 40 Thieves from the original Arabian Nights tales. Come along and cheer our hero Ali and his friend Morgiana as they heroically try to save greedy Cassim from the evil Asbad Asthat!

This is a riotous panto for all the family, full of magic and mayhem. Tickets will be available from mid-December at Rosie and Rex Gift Shop on Thornbury High St. Ticket prices are very affordable at just £8 for adults and £6 for anyone under 18. What a bargain.

Wednesday 11th to Friday 13th January 2023 at 7.30pm
Saturday 14th January at 11am and 2.30 pm
Christ the King Church Hall, Castle St.

Thornbury Library

Christmas is coming! Choose a book token, a perfect gift for book lovers, available at Thornbury Library

Keeping warm and well

Come and relax with a warm drink in the library Throughout the day on Wednesdays and Thursdays 9.30am to 4.00pm Use the computers or use your own iPad, phone etc. (Wi-Fi available) Read a book, a newspaper, browse the shelves, enjoy a communal puzzle, or just relax.

Meet the author Lynne Cavendish

Self-Published author Lynne Cavendish will be in the library on Monday 5th December from 10am-12pm to chat about her book 'The lights came on for Marcia Duncan'.

YOUR PC GURU

COMPUTING FOR 'MERE' MORTALS

01454 616365

- Home visits
- Computer Repair
- Phone & Tablet setup
- Home Wireless & Broadband
- Smart Home Tech
- Complete Mac support

www.yourpcguru.co.uk
Technology Advice & Repairs

JC 4x4 Ltd SPECIALIST IN LANDROVER

SERVICE • REPAIR WORK • DIAGNOSTICS • MOTS • OTHER VEHICLES WELCOME

CALL JAMES: 01454 261067 / 07966 086447

EDGE HEATING & PLUMBING

07307 727244

Free Quotes

Domestic	Radiant heating
Commercial	Boilers
Breakdowns/ call outs	Radiators
Servicing	Plumbing
Installations	
Warm air heating	LPG, natural gas, oil



www.edgeheatingandplumbing.com info@edgeheatingandplumbing.com

Have You Read...?

A book group for everyone. Come and enjoy an open book group with a difference. No set novel to read. Just drop in for an hour for refreshments and a chat.

Friday 2nd December 2pm

BFG's (Book Focus Group) for Year 7 and up

Come and spend an hour discussing your favourite books with others. A great way of finding brilliant new authors for you.

Thursday 8th December 4pm-5pm

Computer Support One to One

Book a session with our computer volunteer for IT and digital support.

Every Thursday 9.30am, 10.30am, 11.30am

Sight Support West of England drop in

Support and advice for people with visual impairments.

Monday 19th December 10am-1pm

Seasonal Crafts

Make some beautiful Seasonal Crafts to decorate your home (age 4+)

Saturday 10th December 11am- 12 noon

Create something wonderful for Christmas Day and New Year's Day (age 4+)

Wednesday 21st December 10.30am-12noon

To book any of the above activities pop in, or

email thornbury.library@southglos.gov.uk or tel. 01454 86800

Christmas opening hours

Sat 24th Dec 9.30-12.30

Sun 25th Dec- Wed 28th Dec CLOSED

Thurs 29th and Fri 30th 9.30-5.30

Sat 31st Dec 9.30-12.30

Sun 1st Jan- Tues 3rd CLOSED

Wed 4th Normal hours resume

Did you know?

Severn Beach Community Library is open

Mondays and Wednesdays 2.30pm-4.30pm

At Severn Beach Village Hall



Member of Federation
of Holistic Therapists

07765804144

****Introductory Offer****
£10 off any 60 min treatment

FULL BODY MASSAGE	60 MINS	£45
*AROMATHERAPY MASSAGE	60 MINS	£48
BACK, SHOULDER & NECK MASSAGE	30 MINS	£25
REFLEXOLOGY	60 MINS	£45

Please allow at least 15 minutes for Consultation

*A blend of pure essential oils will be tailored to address each individual's needs.



Dave Webb

Painter - Decorator

07809 869149

01454 201640

*Reliable, professional, friendly service.
Please ask for your free quotation*



Squire Sweep

A chimney sweep service from
Michael Squire

Tel: 07504 253 467

Email: squiresweep@gmail.com

Visit: www.squiresweep.co.uk



North Bristol Bathroom Showroom

Scan the QR code for a
No obligation
Survey, Design & Quotation
Appointment

North Bristol Bathroom Showroom
Gloucester Road
Almondsbury
Bristol
BS32 4HY
Tel: 0117 980 7419
Email: showroom@nbbsplumbing

Yours Faithfully

Michael Matthews
The Vine House of Prayer

When considering the opportunity to submit this article it is not easy to focus in on what might be of interest to readers, but what always amazes me is that all of us are having to face situations that are constantly changing either by outside circumstances and events, or on an individual and personal level.

What does one do when seemingly we cannot control or change what is going on around us? Well, I did make some suggestions for consideration in my 'Yours Faithfully' for the February edition that probably - like so many things in life - are easily forgotten. So, what can one rely on, or better still, who can we rely on?

At one of the many times we read about in the Old Testament of the Bible, when God was seeking to turn His people back to Himself at a time of great distress, the statement is recorded in Malachi 3:6 "I the LORD do not change. So you, O descendants of Jacob, are not destroyed"

God was making a statement based on His own faithfulness to His previous promises, and the strength of a promise being fulfilled depends on the character and goodness of the one who makes it.

"I the LORD do not change!"

Now without getting to deeply involved here with the many questions that arise in our own minds about so many distressing events happening in the world, to be able to embrace the truth of One who does not change and the positive promises that come from Him can bring a confidence and security that can be experienced as well as believed.

The psalmist wrote in Psalm 116:5-7 - "The LORD is gracious and righteous; our God is full of compassion. The LORD protects the simplehearted; when I was in great need, he saved me. Be at rest once more, O my soul, for the LORD has been good to you."

John the apostle wrote, "And we have seen and testify that the Father has sent his Son to be the Saviour of the world. If anyone acknowledges that Jesus is the Son of God, God lives in him and he in God. And so we know and rely on the love God has for us. **God is love.** [1 John 4:14-16]

Come to me (said Jesus), all you who are weary and burdened, and I will give you rest [Matthew 11:28]



MEMORIALS &
MONUMENTS



Supplied & Erected
NEIL VIZARD
01454 419108

BAMFIELD
TREE SERVICES
TREE SURGERY AND LOGS



www.bamfieldtreeservices.co.uk
07761 810483

prestige
event equipment hire

Supplying you with the best equipment to succeed!
CELEBRATIONS & CORPORATE EVENTS

CUTLERY, CHINA, GLASSWARE, LINEN, REFRIGERATION,
COOKING EQUIPMENT, BARBEQUES, FURNITURE & MORE

Fast and Efficient, we stock a wide variety of
equipment covering anything from
WEDDINGS to FESTIVALS.

For a FREE quote please call: 01179613170
info@prestigecateringhire.co.uk
www.prestigecatering.co.uk

HK **Harkell**
Building services

- MAINTENANCE
- BRICKWORK
- ROOFING
- FENCING
- REPAIRS
- PLASTERING
- CARPENTRY
- PATIO ETC

FOR A FREE QUOTATION PLEASE CALL
TEL: 01454 617110 MOBILE: 0787 6682546

Window Cleaning

07976 694744 - 0117 9085794



M. Gray Window Cleaning

Family run business for over 25 years
experience working in the Almondsbury,
Olveston, Aust areas - and nearby.

Email: mgwc1@hotmail.com

Church News

ST MARY the VIRGIN, OLVESTON

Dec 4	10am 6pm	Holy Communion Evensong	Rev Ann Lloyd Fran Breal
Dec 11	10am 4pm	Morning Prayer Salvation Army Band	Janet McBride David Shaw
Dec 17	4.30	'Refresh', Come and see The Christmas Story	Paul and Natasha Harrod
Dec 18	10am 6pm	Morning Prayer Village Carol Service	Rev David Bone Revs Moss & Lloyd
Dec 23	9pm	Carol Singing at the White Hart	David Shaw
Dec 24	4pm 11.15pm	Christingle Service Midnight Communion	Rev David Moss Rev Ann Lloyd
Dec 25	10am	Christmas Family Service	Rev Ann Lloyd

Every Saturday in Term Time, 'REFRESH', 4.30-5.30 - Fun, relaxed church for families, all welcome.

Every Wednesday, Holy Communion, 10am.

NB. Clergy may change.

Contact: Rev David Moss, 01454 415190; email: mossds@gmail.com

CHAPELRY OF ST JOHN, AUST

Dec 11	10am	Morning Prayer	Trevor Cook
Dec 18	4-5pm	Carol Service	Trevor Cook
Dec 24	11pm	Midnight Communion	Trevor Cook

Contact: Trevor Cook, 01454 618442

Church Wardens: Jenn Dickens 632312 and Clive Roberts 632238

ST MARY DE MALMESBURY, LITTLETON-ON-SEVERN

Dec 11	3-4pm	Carol Service	Tracey Black
Dec 25	9am	Holy Communion	Tracey Black

Contacts: Tracey Black 417660 and Tim Pyper 416422 /07802 419451

greenside
Landscaping

The Cottage, Hortham Lane,
Almondsbury, Bristol BS32 4JP

Greenside Landscaping can offer a wide range of services including:

**Artificial Grass ~ Brick & Block Driveways
Decking ~ Fencing & Gates
Garden Design ~ Patios & Paths
Planting ~ Ponds & Water Features
Turfing & Seeding ~ Walling**

We pride ourselves on flexibility and we strive to meet our client's requirements and budgets.

www.greenside-landscaping.co.uk
Tel: 01594 841559 Mob: 07980 384321
Email: paulbradburn@hotmail.com

BE DLAM
www.bedlambeds.com

- Free local delivery
- Free assembly
- Free disposal of your bed

Divans / Mattresses / Ottoman & Wall beds /
Memory foam & latex mattresses / Beds made
to measure / Pine, Metal & leather beds

**Open Tuesday to Friday: 9am-5pm
Saturday: 10am-3pm**

Visit our showroom: The Old Post Office
26a Gloucester Road, Rudgeway, Bristol,
BS35 3RY (by the speed camera)

01454 617 277 or 07887 853479

MORAS
Decorating Services

ANDREW MORAS
Quality Painting and Decorating Services

For your **FREE** no obligation quote contact Andrew:

07962069036

✉ andrew@morasdecorating.co.uk
www.morasdecorating.co.uk

Tavira
Algarve, Portugal
3 Bed Apartment
"can accommodate up to 8 people"

Modern 3-bedroom apartment in picturesque & historic Algarve town.
2-bathrooms including one en-suite, 2-balconies & roof terrace.
Fully furnished, sleeps 6-8. Easy walking to thriving town centre.
Close to railway station, golf courses & beaches. 30 minutes drive from Faro. Ideal for families or golfers. Tel: 07889 727729
Email: anthonyar@aol.com - www.aminpadtavira.co.uk

TAVIRA - EAST ALGARVE
EASYJET & RYANAIR
NOW FLYING TO FARO
FROM BRISTOL

Thornbury Stairlifts
SALES SERVICING & REPAIRS

• New & Re-conditioned Stairlifts & Warranty
• Removals & Relocations
• Free Surveys & Quotes - No Obligation
• Rentals for Straight Stairs

Independent, Professional & Friendly Advice
Over 24 years practical experience

Independent Stairlift Specialist
01454 413748 07833 318722
www.thornburystairlifts.co.uk

ST JOHN THE EVANGELIST, ELBERTON

Dec 11	9am	Morning Prayer	Judith Heybyrne
Dec 13	7-8pm	Carol Service	Judith Heybyrne
Dec 17	2.30pm	Christingle Service	Judith Heybyrne
Dec 25	9am	Holy Communion	Judith Heybyrne

Contacts: Judith Heybyrne 616725 and John Gunnery 413225

OLVESTON AND TOCKINGTON METHODIST CHURCH

Dec 4	10am	Tock Ch	Morning Worship led by Rev Dr John Emmett with Holy Communion
Dec 11	10am	Olv Ch	Carol Service led by Rev Dr Simon Edwards
Dec 18	10am	Tock Ch	Morning Worship led by Mrs Karen Bolton
Dec 25	10.15	Tock Ch	Christmas Day Celebration Service led by Rev Dr John Emmett

Contact: Rev Dr Simon Edwards 418176,
simon.edwards@methodist.org.uk

THE VINE House of Prayer, Pilning Street, Awkley BS35 4HL

Meeting at 11am every Sunday and on the 1st and 3rd Wednesdays of each month at 2.30pm.

Contact: Mike and Barbara Matthews, tel. 07512 917229 or email:
thevine_awkley@hotmail.com

HOLIDAY LET 6 BERTH HOLIDAY HOME
(2 Bed, 1 Ensuite)

LADRAM BAY
OTTERTON . BUDLEIGH SALTERTON . EX9 7BX

Central Heating . Double-Glazed
Private Beach . Fishing Trips . Cliff Walks
Restaurant . Bar . Live Entertainment
Indoor Pool . Kids Club
Shop . Cafe . Takeaway

Tony Gardner
07889 727 729

THE OASIS CHURCH, OLD DOWN

Services at 6.30pm every Sunday. All are welcome.

Contact: Neil Mobbs, cnmobbs@hotmail.com

AUST EVANGELICAL and LITTLETON EVANGELICAL CHURCHES

Contact: Danny Bamfield 01454 419324 email danny@thebamfields.co.uk

RC CHURCH OF CHRIST THE KING, Thornbury -

Mass on Sundays at 9.30 and 10.30am

Tel 01454 412223, www.ctk-thornbury.org.uk

SOCIETY OF FRIENDS (QUAKERS), Thornbury

Contact: Brian Hawkins, hawkinsb863@gmail.com 01454 854867

Diary Dates for December

Information believed to be correct at going to press.

1 Thurs	Coffee Shop	9-12	S+M
2 Fri	Jim Causley sings Christmas Songs, The Ship, Alveston (and Saturday at 10am)	7.30	
3 Sat	Christmas Coffee Morning The Pied Piper, TMTG Juniors, 2pm and 7pm also on Sunday at 2pm 'Refresh', relaxed fun for families The Femmes, harmony group	10-12 4.30 7pm	S+M PH S+M S+M
5 Mon	Monday Movies	7.30	S+M
6 Tues	Over 60's Coffee Morning Thornbury Memory Café	10-12 10.15	DGCL TMH
7 Wed	OPHS: The Railway Comes to Thornbury	7.30	OMC
8 Thurs	Thornbury Farmers' Market Coffee Shop	9-1.30 9-12	S+M
9 Fri	Over 60's Bingo or Quiz	2-4	DGCL
10 Sat	'Refresh', relaxed fun for families Rockpipes Band at St Helen's Alveston	4.30 7.30	S+M
11 Sun	Salvation Army Band, Christmas Concert	4pm	S+M
12 Mon	Severn Vale Flower Club	2pm	?

13 Tues	Over 60's Coffee Morning WI	10-12 7.30	DGCL PH
15 Thurs	Thornbury Farmers' Market Coffee Shop	9-1.30 9-12	S+M
16 Fri	Over 60's Bingo or Quiz	2-4	DGCL
20 Tues	Over 60's Coffee Morning Thornbury Memory Café	10-12 10.15- 11.45	DGCL TMH
21 Wed	Carols on the Green, Tockington	6.30	
22 Thur	Coffee Shop	10-12	S+M
23 Fri	Carol Singing in the White Hart, Olveston	9pm	
25 Sun	Christmas Day		
26 Mon	Boxing Day		
27 Tues	Bank Holiday		
29 Thurs	Coffee Shop	10-12	S+M

KEY: **AMH** - Alveston Methodist Hall, **CTK** - Christ the King, **DGCL** - Daldry Gardens Community Lounge, **EVH** - Elberton Village Hall, **OMC** - Olveston Methodist Church, **OPH** - Olveston Parish Hall, **S+M** - St Mary's Church,
SMCH - St Mary Church Hall Thornbury, **TMH** - Thornbury Methodist Church Hall



Contact details for any clubs or organisations in the Meeting Point area can be found in the Meeting Point Directory on the community website: www.olvostonandaust.com. If you would like to update your organisation's details, please email: meetingpointsecretary@olvostonandaust.com

Advertisements Neither Meeting Point, its editor, nor management committee accept any responsibility or give any guarantee in case of any dispute or claim as to quality, condition or delivery of commodities or services advertised in this magazine. It is not to be taken that publication implies recommendation. It is always advisable to check prices when ordering goods or services.

Views expressed by contributors are not necessarily those of the editor or Meeting Point magazine
Copyright Meeting Point 2022. Copyright remains with the author(s) and Meeting Point. No part of this publication may be reproduced or transmitted in any form without the prior permission of the copyright owners.

Meeting Point is printed by Motion Printing Ltd.



OLVESTON STORES & POST OFFICE

NOW STOCKING - JON THORNER'S FULL RANGE

NEW COSTA EXPRESS MACHINE IN STORE

HOME DELIVERIES (NO MINIMUM SPEND)

NEWSPAPERS DELIVERED (SMALL CHARGE)

PAYZONE FACILITY FOR BILL PAYMENTS, GAS, AND ELECTRIC TOP UPS

OUR INSTORE POST OFFICE OFFERS A WIDE RANGE OF SERVICES

CAR TAX
BILL PAYMENTS
CURRENCY ORDERS
POSTAGE
A RANGE OF INSURANCES
&
MUCH MORE

01454 612269

olvestonstores@btconnect.com

BONDS *of* THORNBURY

INDEPENDENT ESTATE AGENTS



A truly local independent estate agency with over 40 years of experience and with unrivalled knowledge of the property market within Thornbury and South Gloucestershire.
Our caring sales business is based on our reputation, honesty and integrity.

Please contact: Rowena Moncrieff
for further details...

14 The Plain, Thornbury
Tel No: 01454 858007

www.bondsofthornbury.co.uk
enquiries@bondsofthornbury.co.uk

