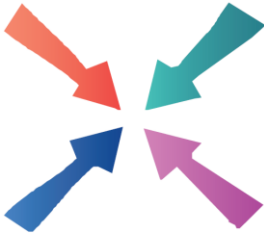


# Meeting Point



December 2018



# Meeting Point

**Volume 43, Number 3, December 2018**

The community magazine for the villages of Olveston, Tockington, Old Down, Lower Hazel, Awkley, Ingst, Aust, Elberton and Littleton upon Severn

## EDITOR:

**Marelin Orr-Ewing**  
Courtlands  
Olveston  
Bristol BS35 4DU  
Tel: 01454 610081  
*meetingpointeditor@gmail.com*

## ASSISTANT EDITOR:

**Angela Williams**  
Ashlea  
Haw Lane  
Olveston  
Bristol BS35 4EG  
Tel 01454 612850  
*meetingpointmagazine@gmail.com*

## ADVERTISING:

**Nigel Dawes**  
Cromwell House  
The Street,  
Olveston  
Bristol BS35 4DR  
Tel: 01454 201558  
*julie.dawes@tiscali.co.uk*

Publication date  
*1st of each month*

Material for December 2018  
to the Editor or Deputy Editor  
by 3<sup>rd</sup> December 2018.

## From the Editor

I know I am probably biased, but by far the most beautiful mass poppy display I saw this November was the one in the churchyard by the War Memorial in Olveston. We have got an article in the magazine this month giving us the story of exactly about how it came about. We also hear from a teacher at Olveston School, with an interesting account of how his class has been learning about the First World War and how they plan to have a lasting memorial in the school library.

Looking forward to December, however, we have got details about a number of Christmas events. There are concerts, shows, fairs (or fayres) and in the centre pages we have got Christmas and New Year opening hours for a range of local businesses. We hope you will find all this helpful.

All of us at Meeting Point wish our readers a very Merry Christmas and a Happy and Peaceful 2019.

*Marelin*

The cover is from a painting by the late John Crossley.

Meeting Point Founded in 1976 by the Anglican and Methodist churches in Olveston, near Bristol

Meeting Point magazine and Meeting Point Directory are online at the Community Website: [www.olvestonandaust.com](http://www.olvestonandaust.com)

# News from St Mary's

Debbie Harries



## **Outreach Project Sunday December 2<sup>nd</sup> 4pm St Mary's Church, Olveston.**

Please come and join us for a community tea and the launch of the 2018/2019 Outreach Project 'Sowing and Growing'. Hear all about both projects: The refugee village in Rwanda and the outdoor reflective space at Olveston School. All are welcome and there is no

charge. To help with catering, if you would like to come, please ring Gail on 01454 612709 or email [gail@gallowe.com](mailto:gail@gallowe.com) or just arrive! You will be most welcome.

## **Salvation Army Concert Sunday December 9<sup>th</sup> 7.30pm**

We are delighted to welcome Easton Salvation Army Brass Band again to St Mary's for another Christmas Concert. Please come along and enjoy the evening. Donations will be in aid of the Salvation Army's great work.

## **Christmas Tree Festival**

There will be a Christmas Tree Festival in St Mary's from Sunday December 9<sup>th</sup>. Do come in and enjoy the display!

## **Christmas Market Saturday December 15th from 4pm**

We are having a Christmas Market at St Mary's! Pop in to find those last-minute presents and decorations! Mulled wine, tea, coffee and mince pies are being served too!

## **Carols!**

Our Christmas Singalong with the choir at the White Hart is on Friday December 14th at 9pm, all are welcome.

Our Village Carol Service is on Sunday December 23rd at 6pm. We look forward to welcoming you.

Please see all our Christmas services in the Church News section of the magazine. We look forward to welcoming you over the Christmas period.

## **Advent Windows**

Our Advent Windows will start being lit from the 1<sup>st</sup> December. We hope you enjoy them as we prepare for Christmas.

1. Holly Cottage, New Road, Olveston
2. Greengates, The Street, Olveston
3. Green Lane Garage, New Road, Olveston
4. Lavender Cottage, Vicarage Lane, Olveston
5. 47 Laxton Close, Olveston
6. 2 The Crescent, Olddown
7. 30 Orchard Rise, Olveston
8. 3 Green Court, Olveston
9. Ashlea, Haw Lane, Olveston
10. 12 Orchard Rise, Olveston
11. Waypoint, New Road, Olveston
12. The White Hart, Olveston
13. 2 Green Court, Olveston
14. Daldry Gardens, Vicarage Lane, Olveston
15. 24 Orchard Rise, Olveston
16. Holly Cottage, Church Hill, Olveston
17. Orchard Lea, Vicarage Lane, Olveston
18. 14 The Crescent, Olddown
19. The Cottage, Elberton Road, Olveston
20. The Wesley Rooms, Tockington
21. Sheepcoombe House, Washingpool Hill, Tockington
22. Little Grange, The Green, Olveston
23. 1 Cromwell Court, Olveston
24. St Mary's Church, Olveston

## **From the Registers of St Mary's Olveston**

14th October

Baptism of Tabitha Helen Granville, daughter of  
Susan Ann Glanville and Neil Peter Glanville

## **Litter Pick**

*Rod Williams, 612850*

The final litter pick of the year will be at 1pm on Saturday 1<sup>st</sup> December, meeting at the Parish Hall car park.

# Christmas Trees in Olveston

Nordman Fir Super Premium Christmas Trees supplied by Frenchay Forestry will be on sale at Olveston School on  
Friday 7th December 15:30—17:30  
Saturday 8<sup>th</sup> December 10:00 – 11:00



Size (cm)	Size (ft)	Price
150 - 175 cm	5ft	£30.00
175 - 200cm	6ft	£35.00
200 - 225 cm	7ft	£40.00

If you're unable to attend during these times but would like to purchase a tree, please contact the School Office on 01454 613299. By buying the tree through us you are helping to raise much needed funds for the School.

## Computer Clinic Closing

*Adrian Baxter*

Due to falling numbers and a lack of volunteers we have had to take the sad decision to close the doors on The Computer Clinic. It is just a couple of months short of five years and we have had a lot of fun, some weird and wonderful problems to discuss and a few jokes along the way. Speaking personally, it has been fantastic to witness people coming in feeling a bit apprehensive or frustrated by their technology and over a period of time growing in confidence and actually starting to enjoy it.

We have had people from far and wide, the usual parish areas of Ingst, Tockington, Olveston and Old Down but also Elberton, Itchington, Alveston, Aust, Thornbury, Berkeley and Sheffield - and even two different regular visitors from the USA, one from Washington and the other from California whilst they were in the Parish visiting family.

I'd like to thank the Olveston & Tockington Methodists and the Parish Council for their support, our previous volunteers and finally my stalwart Friday night 'partner in crime' Glyn Varney, without whom it would not have been half as much fun. And last but by no means least to all those who have come along and used our services and made even my brain hurt a few times.

Our last day will be Friday the 14<sup>th</sup> December 2018 where there may be the odd mince pie or two to accompany the coffee and tea.

# Daldry Gardens Christmas

## Communion

Christmas Community Communion at Daldry Gardens with June Robbins will be on Wednesday 5th December at 2.30pm. All welcome. There will be a short service followed by mince pies and more! Please come and join us.

## Friends of St Mary's

The prize winners in the November draw, held on 1st November 2018 at the Friends' Committee Meeting were:

<u>Amount</u>	<u>Number</u>	<u>Name</u>
£150	502	Revd D Bone, Tockington
£75	471	Mrs J Panes, Olveston
£25	255	Mrs F M Riley, Bitton
£25	205	Mrs G Olewicz, Bow Street
£25	374	Mr P Savage, Olveston
£20	358	Mrs S Toft, Olveston
£20	605	Mrs M Lewis, Olveston
£20	378	Mr N Dawes, Olveston
£10	372	Dr M Wright, Olveston
£10	576	Mrs V Brazell, Olveston
£10	315	Mrs J Spratt, Tockington
£10	539	Dr M Wright, Olveston

If you are not yet a member and wish to join the lottery, please telephone Andy Phillips on 01454 614890.

## Old Down Cricket Club

*Tony Gardner 07889 727729*

### 150 Club Winners November 2018:

£50 Helen Barnett  
£15 Neil Cross  
£5 Bill Finch

Up the Down!!

# Underground Bristol

**Wed. 5th December 7.30 pm. Olveston Methodist Church**

The Historical Society's next meeting is a chance to find out from local civil engineer Hamish Orr-Ewing just what lies beneath our feet as we travel across Bristol.

He will explain how the geology and topography of Bristol have influenced and determined the city's development - below ground, as well as above! He will reveal how some of the infrastructure from centuries past still remains as archaeological sites below the surface of the city. Redcliffe caves, for instance (pictured here) have served as mines, an industrial tip, secure storage and a jail in the past.

Bringing us up to the present day, Hamish will share his knowledge of more recent infrastructure below the city's surface, gleaned from his own working experience of large-scale tunnelling under Bristol.



Come and get a whole new perspective on Bristol! Anyone is welcome to come to this talk... just turn up. £2 on the door for visitors.

Olveston Parish Historical Society [www.olvoston.com/historical-society](http://www.olvoston.com/historical-society)

## The Royal British Legion Women's Section Olveston Branch

In October we welcomed back Sally Taylor, who once again delighted us with her demonstration of innovative flower arrangements which she generously donated to our raffle as prizes.

In November we dedicated our activities to fund-raising for the National Poppy Appeal which culminated in the Remembrance Sunday ceremony on the 11<sup>th</sup> of that month, which also coincided with Armistice Day.

This month our meeting is on the 4<sup>th</sup> December and we will return to fund raising for our own branch with a beetle drive and a Christmas buffet.



# Oveston Parish Council Matters

## **Old Down Play Area**

On Sunday the 28th October an event was held at Old Down Play Area showcasing ideas for the redevelopment of the play area. The event was well attended with many families withstanding the blustery weather and enjoying a cup of hot chocolate and marshmallows. It was incredibly useful having the children look over the ideas/plans and then provide us with their feedback. It gave us a huge amount of insight into what they really wanted. A big thank you to everybody who helped us put the event together. We are always looking for more people to support the redevelopment of the play area so if you would like to help please contact:

Nina Lewis-Leaver: [nina.lewis-leaver@olvestonparishcouncil.gov.uk](mailto:nina.lewis-leaver@olvestonparishcouncil.gov.uk)

Louise Powell: [powelllouise967@gmail.com](mailto:powelllouise967@gmail.com)

## **Parking on Pavements**

This is now becoming a serious problem within the villages. Parking on the pavement may alleviate the possibility of having your wing mirrors clipped, however we do need to show consideration for our fellow parishioners, particularly those who have difficulty in walking.

## **Grant Awarding Policy**

Just in case you missed the announcement in last month's issue! The Awarding Policy means if you meet the criteria specified in the terms of the grant, you may well get a helping hand for a project or group that will benefit the community. For the forms go to: [www.olvestonparishcouncil.gov.uk](http://www.olvestonparishcouncil.gov.uk)

## **Parish Clerk**

The post is still available. The Council wishes to recruit a hard-working individual to work as Clerk/ Responsible Financial Officer. The weekly workload is approximately fifteen hours and includes two evening meetings per month. The Council provides a laptop; work can be done from home at hours to suit. A commitment to undertake the CILCA qualification is preferential. The closing date is 15<sup>th</sup> December with interviews to take place in early January. The application form can be found on our website. Applications to be sent to: [clerk@olvestonparishcouncil.gov.uk](mailto:clerk@olvestonparishcouncil.gov.uk)



## **Annual Parish Assembly**

This normally takes place during the first week in May although it could be held in late March/early April. Whilst the content of the Assembly has been set over many decades now might well be the time for a change with a far more active involvement from the Parishioners. If you have any suggestions or recommendations, please email them to: [clerk@olvestonparishcouncil.gov.uk](mailto:clerk@olvestonparishcouncil.gov.uk)

Finally, may we extend **Seasons' Greetings** to all our Parishioners with every good wish for the New Year.

# **Parish Players present 'The Sound of Music'**

Make a note in your diaries now, as Rodgers & Hammerstein's masterpiece 'The Sound of Music' is coming to Tockington for next February half term. The musical, based on the true story of the talented von Trapp family and their escape from the Nazis, was first staged in 1959 and so has been entertaining audiences around the world for six decades.

This much-loved show, with its splendid songs and memorable score, will be Parish Players' production for 2019. It will take place on Wednesday 20th to Saturday 23rd February at the Parish Hall, Tockington. Once again, it is the product of a creative team led by experienced director Linda Evans, so you can be sure of enjoying an evening to remember!

Tickets will go on sale on Saturday 5th January at Olveston Stores from 9.30am to 11.30am and will be available afterwards via a telephone booking line. Updates and further information will be available at:  
[www.facebook.com/OlvestonParishPlayers](http://www.facebook.com/OlvestonParishPlayers).

## **Tea and Chat**

If you find it difficult to get out and socialise, why not come to Tea and Chat? Meeting once a month, Tea and Chat is made up of people just like you and it's a great way to meet up with old friends and make some new ones at the same time.

The December Tea and Chat is going to be different. Instead of tea and cake there's going to be a Christmas lunch on Friday, December 7<sup>th</sup> at the home of Pat Savage, Westmead. Transport is provided and it's all free. To find out details of the time of the lunch and to request transport if necessary, please telephone Lynn 01454 612201 or Lesley 01454 613804

# Aust Parish Council Matters

*Tim Pyper (austparishcouncil@googlemail.com)*

## **New clerk**

The council has appointed Kath Godden to take over as clerk from me in January. Kath is a local – she lives in Almondsbury - and I hope that she will enjoy serving the council and our community as much as I have. I wish her all the best in her new role. Kath will continue with the same email address (as above) and her other contact details will be published on the website in due course.

## **Aust Roundabout traffic jams**

A representative of Highways England came to a recent meeting as we wished to discuss the traffic jams which build up at the Aust roundabout when the Severn Bridge is closed to high sided vehicles. The tail back towards Avonmouth caused by the closing off of one lane on the A403 northbound means that the crossing from Aust village to Passage Road is blocked by stationary traffic.

We couldn't persuade Highways England to do anything about this – they had a safety assessment recently and are worried about accidents to their staff who have to stand in the road to direct traffic. However, South Gloucestershire council are going to paint white “Keep Clear” markings on the area that gets blocked. We suggested a yellow box, but the bureaucratic process and cost mean that this might take a long time, so we hope that the white markings will at least help.

## **Swansong**

This is my last contribution to Meeting Point as clerk of Aust parish council. I will retire on 31<sup>st</sup> December after nine years in the role.

It has been an interesting role and given me an insight into the way we are governed at a local level. Government and local authorities often say that they value the involvement of local communities in policy and planning. This isn't always apparent in practice as one often feels that what one says falls on deaf ears. But we must keep trying. And perhaps it's me? One of my partners in my law firm always complained that he had not been consulted if we didn't agree with the views he expressed!

I am very grateful for the support of the Councillors who have always treated me very kindly and supported me in one or two difficult moments. And thank you too to all you residents of the Parish, especially those of you who have kindly said that you enjoy my musings in Meeting Point. I shall miss you!

# Of Mice and Me

Trevor Cook

Last winter I had the dubious pleasure of receiving two types of little visitor, both of whom decided to move in and share my home and attic.



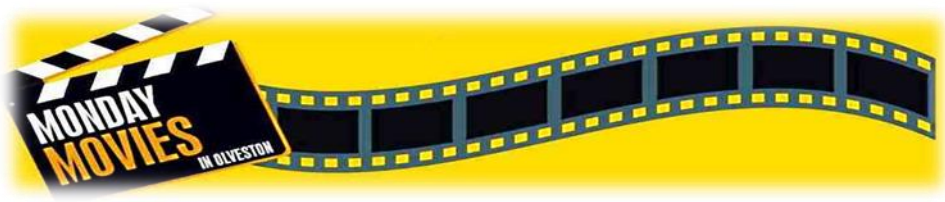
The first one I saw was a very small House Mouse (*see picture on the left.*) which I chased around my living room until it eventually dived for cover under the kitchen units. I never saw it again; which is a bit of a worry, but I haven't heard anything, nor smelled that particular, stale 'mousy' smell since then; nor have I found any droppings. So, I hope I can relax.

And then in the depths of winter I heard the familiar scritch, scritch, scratch of mice in my attic. I bought and installed mouse traps and was very surprised when I found I had caught a different kind of mouse altogether. Whereas the 'downstairs mouse' was clearly a House Mouse with a dull greyish-brown colour and a pointy nose, large eyes and ears and a scaly tail, the 'attic mice' (I caught two) were quite different. They had brown fur with a reddish tinge and a white or greyish underside; it was the internet that soon identified them as Field or Wood Mice. (*See picture below.*)

This was a surprise for me as all the descriptions I read said that Field Mice were exactly that, mice of the woods and hedgerows. It can only have been the warmth that attracted them, and which led them to nightly celebrations, dancing across my bedroom ceiling.

Nature is a lovely thing in its proper place but in the case of mice you must remember that it is not only rabbits that have a propensity for rapid breeding and that their habits will eventually lead to property damage. It's harsh, but my advice is that they have to go.





## DECEMBER PROGRAMME

Trevor Anderson

Christmas Greetings to all readers from the Movie Club Team in Olveston. Details of our December films are given below. Everyone is welcome (you don't need to be a Movie Club member), admission is free and there is no need to book.

### MONDAY MOVIES (7.30pm on the 1<sup>st</sup> and 3<sup>rd</sup> Mondays of each month)

**Mon 3 Dec:** The incredible true story of how a struggling salesman from Illinois met two brothers who were running a burger operation in 1950s California. He was so impressed by the brothers' speedy system of making food that, with a combination of ambition, persistence, and ruthlessness, he pulled the company from the brothers and then risked bankruptcy, his marriage and his reputation to create the biggest restaurant business in the world. As the Radio Times said: "See this film and you will never look at your local fast-food joint the same way again." (2016, 1h 55m, Cert 12)

**Mon 17<sup>th</sup> Dec:** Want a change from the 'traditional' Christmas film? If so, try this one. Margaret Sullavan and a young James Stewart star in this romantic comedy with a Christmas flavouring. Set in and around a shop in Budapest, the film tells the story of two co-workers who can barely stand the sight of one another, little knowing that they are falling in love by post as pen-pals. It's a film to make you pick up pen and paper and send your loved ones a letter. (1940, 1h 38m, Cert U)

**The Children's Movie Club** is currently 'on hold' and we urgently need more adults to join the team to enable it to continue. If you think you might like to help, please contact Martin Gibson on [mrtngibs@aol.com](mailto:mrtngibs@aol.com)

All the films are shown in **St Mary's Church, Olveston** and doors open 30 minutes before the start. Refreshments are available at all the shows, plus licensed bar in the evenings and popcorn and soft drinks in the mornings.



We make no charge for entry, but we do value and appreciate a small **donation** towards church running costs if you have enjoyed the show.

For copyright reasons we can't name the films here, but if you join the Movie Club we'll send you titles and full details by email. It costs nothing to join – just email me at [trevoranderson@btinternet.com](mailto:trevoranderson@btinternet.com)

# Olveston and Tockington W.I.

*Vicki Townsend*

A busy Summer and Autumn saw us successfully celebrate our centenary in September. Thanks to the many visitors who joined us for our Centenary Afternoon Tea.

Our October speaker was Jane Lesley, an inspirational lady, who left us feeling exhausted and total 'couch potatoes'. Jane is a lady who competes internationally in triathlons and Iron Man competitions. Swimming 2.5 miles, cycling 112 miles, followed by a marathon run in one day, Jane has won National, European and World titles in her age group. I will not give her age away, but she looked amazing and at least 20 years younger. Several members thought this could be the thing to do.....for at least two minutes!! A really amazing lady who gained our respect and admiration.

In November we held our AGM, a time when committee members are appointed. This was a special year as our President, Kim Prewett, who has completed 6 years of tireless service to the group stood down from the post. Kim was presented with a floral tribute in thanks for her never ending efforts for the group. Jane Haworth will be taking on the mantle of President and we extend best wishes to her. Kim will be a hard act to follow.

The December meeting is a members-only American Supper and social evening. Next month we will publish our programme for 2019, when we would like to welcome any new members.

## Tableaux of Christmas Carols and Songs

Fired with enthusiasm after last year's highly successful 'Christmas Tree and Nativity Festival', Olveston Methodist Church will this year be presenting a Tableaux of Christmas Carols and Songs. Local groups and organisations have been invited to portray their favourite carol or Christmas song in whatever way they wish, and we anticipate that the same diversity that was shown in last year's entries.

The event will run from Friday 7<sup>th</sup> to Sunday 9<sup>th</sup> December and the Church will be open from 10am until 5 pm on Friday and Saturday and from 12 noon to

4 pm on Sunday. Entry is free with any donations going to a new local charity 'Make a Mark.'

On Saturday 8<sup>th</sup> December the Church will also be running its Christmas Fayre from 11am to 2pm with stalls including Christmas gifts, cakes & produce and a bumper raffle. Light lunches will also be available. Why not come along and enjoy both events?

# Thornbury Choral Society - Autumn Concert 2018

**Saturday 1<sup>st</sup> December Castle School, Thornbury at 7.30pm.**

**“At the going down of the sun....”**

The Concert is a commemoration of the centenaries of 2018 – the close of the Great War and the birth of Women’s Suffrage.

To commemorate the centenary of the end of the First World War, Thornbury Choral Society will be performing ‘The Spirit of England’ in which Sir Edward Elgar brings together three poems from Laurence Binyon’s ‘The Winnowing Fan’ about important aspects of the War and sets them to some of his most beautiful, evocative music. Two other works by Elgar complete the Concert programme; Polonia, his symphonic prelude written to support Polish war charities, draws on traditional melodies from Poland and – much beloved by choral societies – ‘The Music Makers’. This work sets words by Arthur O’Shaunessey which reflect on how the artist and the composer are, and perhaps, must be, set apart from the rest of humankind – “We are the music makers, we are the dreamers of dreams”. Elgar’s music is equally reflective and you will hear snatches from many of his own and other works woven into the instrumental texture of the piece including Nimrod, Dream of Gerontius, Rule Britannia, the Marseillaise and Sea Pictures.

The Concert will be conducted by Steven Kings and the choir will be joined by soloists, Isabelle Peters (soprano) and Olivia Gomaz (alto). The Thornbury Camerata will perform ‘Polonia’ and provide the instrumental accompaniment to the other works.

Advance tickets – which are a pound cheaper than on the night - can be purchased from any Member of the Choir or from:

Tessa Sullivan 01454 417865 ([tess@keithsullivan.co.uk](mailto:tess@keithsullivan.co.uk)) or just before the concert from Thornbury Town Hall.

# Octopus Drama Group



Robin Hood will come riding through the glen and onto the Octopus stage in January. Along with his merry men and, of course, Friar Tuck (who has gone vegetarian with alarming consequences), he will continue his crusade to dethrone the wimpy Prince John and win the hand of the fair Maid Marion.

Of course, the wicked Sherriff of Nottingham will be there to thwart him, but who will prevail? With his gang of supporters, including merry maids, Nursey, the poor villagers and a gang of very knowledgeable forest children, how can he fail to win the day?

There is only one question remaining 'who is Gertie Applegirdle and what part does she have to play in this entertaining and lively plot?'

Written for Octopus by Peta Maurice, and directed by Adrian Dennis, this hilarious romp through Sherwood Forest is a real post- Christmas treat for all the family.

Christ the King Church Hall, Castle St, Thornbury

Wednesday 9<sup>th</sup> to Friday 11<sup>th</sup> January at 7.30pm

Saturday 12<sup>th</sup> January at 11 am and 2.30 pm

£7 for adults over 18 and £5 for concessions and children.

Available, from 3<sup>rd</sup> Dec, from Chappell and Matthews, Thornbury High St or call Karen on 01454 413783

## St Peter's Hospice Christmas Bazaar

**Thornbury Methodist Church Hall December 8<sup>th</sup> 10.00am - 12noon.**

There will be a variety of stalls including Cards, Gifts, Crafts, Homemade Preserves, Cakes, Books plus many more. There will be a Raffle and Teas.

Entry by Donation. Thank you for supporting St Peters – your local Hospice.

# November Puzzle Solutions

The November Puzzle was really hard. Sorry about that!

Here are the 10 street names, plus Rise, Hill, Road and Lane, picked out in different colours so you can locate them. How many did you get?

C	W	I	C	D	H	Y	V	F	H
M	A	O	N	I	A	I	F	O	C
E	H	T	L	G	C	O	Y	X	R
E	K	L	H	A	S	E	R	H	U
J	G	R	R	E	L	T	M	O	H
D	R	A	H	C	R	O	O	L	C
S	G	D	S	T	X	I	J	E	R
E	N	A	L	S	K	K	N	S	I
S	A	N	D	Y	A	U	L	E	S
H	U	R	Y	S	C	P	Q	V	E

**CATHERINE, CHURCH, FOXHOLES, HAW, HILL, INGST, LANE, LEY, ORCHARD, PASSAGE, RISE, ROAD, SANDY, VICARAGE**

## Alveston Gardens Association



A Presentation on Wild Flowers of the Azores

7.30pm Alveston Jubilee Hall, Monday 3<sup>rd</sup>  
December

All welcome – Visitors (£3) FFI: [www.alveston.org](http://www.alveston.org)



# Peter James

*Pat Thirkettle*

Peter, a familiar face behind the counter of the Olveston Stores, was born in Shepton Mallet of which he has hazy memories when it was a busy town; he visited it recently and the central Market Square, where his Dad worked in the Nat West Bank, is now run down and lifeless. When Peter was four his Dad was moved to Bristol and the family lived in Downend. Then his Dad became a Senior Tutor at Nat West's headquarters in Oxfordshire and the family



moved again. When Peter was sixteen his Dad was moved back to Downend and the family looked for property out here, including one in Olveston. However, they decided on a house in Upper Almondsbury and Peter did his A levels at Marlwood.

After school he did a year of computer programming but gave it up, a decision he slightly regrets now. Instead he worked for the Civil Service but also part time at The Bowl in Almondsbury. After redundancy he worked full time at The Bowl. In 2015 his Dad died and Peter needed to re-evaluate and took the opportunity to move to Olveston Stores. He loves the community spirit, which is rare these days and an antidote to

faceless shopping elsewhere.

As well as swimming and cycling, Peter is very involved in the arts scene in Thornbury. At present he is in rehearsal for the part of Little John in Robin Hood staged by Octopus at Christ the King Hall in January. He is also a member of Journeymen, an offshoot of TADS, who are performing three bitesized plays, one of which is called 'Contract Killer', where Peter plays a cat that replaces a useless cat employed to get rid of mice! These are staged in Heritage's dining room as part of a meal package. When not treading the boards, he writes songs and is about to complete a play about the last British soldier killed in WW1, which he hopes will be used by Journeymen.

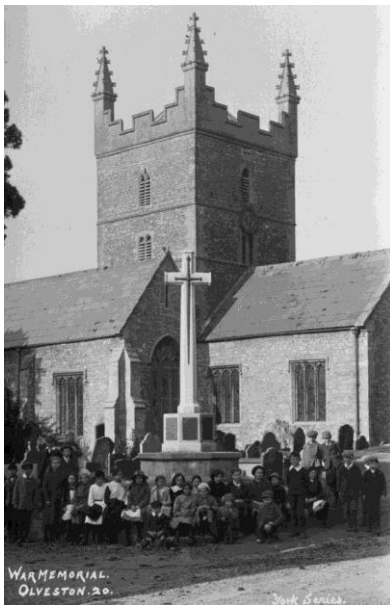
Olveston is blessed to still have shops, where it is a pleasure to be served by people like Peter and catch up on what is going on. Long may it last.

# Then.....and now

*Tom Carter, Year 5 teacher,  
Olveston Primary School*

When I saw the picture in last month's magazine of Olveston schoolchildren sitting in front of the newly dedicated War Memorial, I was inspired to share it with my class and had the idea to recreate it as a way of marking the centenary of the armistice at our school. All of the children recognise the significance of this year's anniversary and were so excited about making something which can act as a lasting legacy of this special occasion especially as, over the last term, we have been learning all about World War I: what it was like for people then, what exactly happened and how its effects are still felt; we are now moving on to learn about World War II in the same way.

Now the plan is to hang up both pictures in our refurbished school library, along with – hopefully – a list of names of all the people who went to our school who lost their lives in the war, to act as our own memorial. I have asked the Olveston Historical Society for their help with this, however if anyone knows of the names of any casualties of the first or second world wars who attended Olveston School, please do get in touch.



# The Olveston Poppy Display *Martin Gibson*



A Korean lady, Younghe Allison, living in Shirehampton, happened to visit the United Nations Cemetery in Pousin, South Korea and by pure chance she noticed the grave of a Tockington soldier – William Lansdown. He was just one of 885 British soldiers who died in the Korean War, aged only 19.

On her return to the UK, Younghe and her husband John, started to research the villages of Olveston & Tockington in the summer of 2018. This included the War Memorial in Olveston where she spotted the plaque commemorating the death of William Lansdown. Younghe wanted to honour the young man and so gathered two groups of Korean ladies, one in Bristol and the other

in Pousin, Korea, to make 885 crocheted poppies.

The day before Remembrance Sunday a gathering of people from the Bristol Korean community and St Mary's church 'planted' these waterproofed poppies in the shape of blood red angels' wings immediately behind the War Memorial. This was, and still is, a spectacular sight, and now the story has unfurled, a moving tribute to a young local boy who did his duty for his country.



# More December Events

A number of December events were included in last month's magazine so here is a brief summary, with some basic details.....

## Frosted!

Wednesday 5<sup>th</sup> December to Saturday 8<sup>th</sup> December. Pilning Village Hall.  
Weekdays 7.30pm, Saturday 1.30pm and 6.00pm. Adults £6/Concessions £4  
Booking Office 01454 633786/632813 or [villageplayerspilning@gmail.com](mailto:villageplayerspilning@gmail.com)

## Almondsbury Primary School Christmas Fayre

Friday 7<sup>th</sup> December 6 - 8pm (from 5.30pm for refreshments)  
There will be all the usual stalls and Father Christmas will be making a special appearance.

For more information call 01454 612517 or email  
[almondsburyschoolpa@gmail.com](mailto:almondsburyschoolpa@gmail.com)

## Alveston Singers Christmas Concerts

Saturday December 8<sup>th</sup> St. Mary's Church, Thornbury 7.30pm  
Tuesday December 11<sup>th</sup> Alveston Methodist Church 7.30pm  
Admission is free, with retiring collections for Cancer Research and  
Children's Hospice South West

## Thornbury Christmas Food and Gift Fair

Saturday 8<sup>th</sup> December 10am – 2pm Castle Street.

Back by popular demand, Castle Street is happy once again to be hosting  
Thornbury's Christmas Market.

# What's on at The Chantry

## **Collectables and Craft Fair Saturday 8<sup>th</sup> December 10am—2pm.**

Come down from the Food Fair and see the changes we have made and enjoy browsing the wide array of stalls around the building. Enjoy a coffee, tea or something stronger! Items to sell at our Fair on December 8<sup>th</sup> are always welcome.

## **Fundraiser Quiz Night December 20th at 7.30pm.**

Come and test your knowledge at our monthly Quiz. £1 per person and up to 4 in a team; bar open.

*www.thechantry.org.uk* email; *office@thechantry.org.uk* or 01454 414268

# Help for Carers over Christmas

The Christmas period is a time for celebration, but if you are looking after someone with an illness or disability it can mean added demands on top of an already stressful day-to-day life. Did you know there is a local charity which is dedicated to supporting unpaid carers? Carers Support Centre offer a range of services for carers of all ages living in Bristol & South Gloucestershire.

If you help look after family or friends who could not manage without this help, you are a carer. This could be caring for a relative, partner or friend who is ill, frail, disabled or has mental health or substance misuse problems. The variety of tasks that a carer takes on can be broad. They can include practical tasks such as cooking, cleaning, washing, ironing, paying bills, financial management and engaging appropriate services; personal care such as bathing, dressing, lifting, administering medication and collecting prescriptions; and emotional support such as listening, advocacy, problem solving, motivating and companionship.

This time of year can place extra demands on carers and if you're caring for someone it's important to find out what help is out there for you. Keith Sinclair, Chief Executive of Carers Support Centre, said: "Most carers first contact us through CarersLine and, when they do, they are often near breaking point. Our support workers guide them through the range of services available to make sure they are getting the best support. Our message to someone who is caring for a relative or friend is: don't wait for a crisis. Find out what support is available now."

If you or someone you know is a carer in need of help, contact CarersLine or visit the Carers Support Centre website for information, advice and to access any of their free services:

0117 965 2200 or [carersline@carerssupportcentre.org.uk](mailto:carersline@carerssupportcentre.org.uk) or  
[www.carerssupportcentre.org.uk](http://www.carerssupportcentre.org.uk)

## Yours Faithfully

*Revd Simon Edwards*

*Olveston and Tockington Methodist Church*

Above the door of a shop in a village I once lived in was a small black box. Most people didn't notice it, not because they couldn't see it but because they couldn't hear it. This small box emitted an unpleasant noise at a frequency that only younger people can hear, to discourage them from hanging about around the door! As people grew older, they lost the ability to hear it, but the noise was still there.

Through December, we hear familiar Christmas music, we see adverts telling us that we need to buy the latest toy, or vacuum, or perfume, to be happy. We put up trees, fairy lights, we eat mince pies and we wrap presents. We plan Christmas dinner, decide who we'll visit, and if they're coming to us we get our emergency chairs out so everyone can sit down.

Hopefully we enjoy all the Christmas things that we do, hopefully we find it a peaceful, happy time. But amidst all that, I wonder if we still hear the sound of Christ's coming? That sound is here, it resounds even in the darkest places of our world – a sound of peace, of joy and of love! The sound of Christ's coming is here, but so often we miss it. Perhaps we miss it because we are busy, or because we are so wrapped up with other things. Perhaps we miss it because we have simply lost the ability to hear it.

At the heart of Christmas is the birth of Jesus Christ, and to celebrate Christmas properly we need to hear the sound of his coming, we need to hear the great story, we need to listen and be filled with awe as God becomes flesh. We need to stop and listen for the sound of Christ's coming in our world and in our lives.

Amidst all the other things we are doing, we need to hear the sound of Christ's coming. That sound that will transform us and lead us deeper into the wonder of Christmas.

# Church News

## ST MARY THE VIRGIN, OLVESTON

Dec 2	8am 10am 6pm	Holy Communion Holy Communion Advent Carol Service	Rev Helen Webb Revs Moss & Lloyd Ministry Team & Amanda Luke
Dec 9	8am 10am 7.30	Holy Communion (BCP) Morning Prayer with Choir Salvation Army Concert	Rev Ann Lloyd Trevor Cook
Dec 16	8am 10am 6pm	Holy Communion Holy Communion with Choir NO SERVICE	Rev David Bone Revs Moss & Bone
Dec 23	8am 10am 6pm	Holy Communion Fourth Sunday Carol Service	Rev Ann Lloyd Janet McBride Rev Ann Lloyd
Dec 24	4pm 11.15	Christingle Midnight Holy Communion	Rev Helen Webb Rev D Bone
Dec 25	10am	Christmas Morning Worship	Trevor Cook
Dec 30	8am 10am 6pm	Holy Communion Morning Service NO SERVICE	Rev D Bone Trevor Cook

**Information on services correct at time of going to press.**

**Rev David Moss**, 01454 415190; email: [mossds@gmail.com](mailto:mossds@gmail.com)

**Verger:** Mrs June Robbins, 01454 617491

[www.stmarysolveston.org.uk/index.html](http://www.stmarysolveston.org.uk/index.html)

**PRAYER GROUP:** Mondays, 2.45pm in the Chancel

**WEDNESDAY HOLY COMMUNION:** At 9.15am except 4<sup>th</sup> Wed when it is at Olveston Methodist Church

**Morning Prayer** 8.30am daily ex. Wed

## CHAPELRY OF ST JOHN, AUST

Dec 9	09.45	Holy Communion	Revs Moss & Parker
Dec 23	4pm	Carol Service	Rev Ann Parker

**Focal Minister:** Rev Ann Parker, 01454 632329

e-mail [annatdibley@btinternet.com](mailto:annatdibley@btinternet.com)

**Church Wardens:** Jon Burnett 633835 & Jenn Dickens 632035

## ST MARY DE MALMESBURY, LITTLETON-ON-SEVERN

Dec 2		NO SERVICE	
Dec 9	3pm	Christingle Service. Mince pies mulled cider	Mrs Tracey Black & Rev David Moss
Dec 16		NO SERVICE	
Dec 25	9am	Holy Communion	Mrs Tracey Black

**Contact Mrs Tracey Black 01454 417660**

## ST JOHN THE EVANGELIST, ELBERTON

Dec 9	9am	Morning Worship	Judith Heybyrne
Dec 11	8am	Carols at Rock House	Rev David Moss
Dec 25	9am	Holy Communion & refreshments	Judith Heybyrne

**Contact Mrs Tracey Black 01454 417660**

## OLVESTON AND TOCKINGTON METHODIST CHURCH

Dec 2	10.00	Tock Ch	Morning Worship led by Mr Stephen Holliday Advent Carols with St Andrews Choir led by Rev Simon Edwards
	6pm	Tock Ch	
Dec 9	10am	Olv Ch	Morning Worship led by Mr Tim Lansdown
Dec 16	10am	Tock Ch	Morning Worship led by Mr Forward Maisokwadzo Carol Service led by Mr Glyn Varney
	6pm	Olv Ch	
Dec 23	10am	Olv. Ch.	Morning Worship led by Rev Simon Edwards Village Carol Service
	6pm	St Mary's Ch	
Dec 25	10.15	Tock Ch	Short Christmas Day Celebration Service led by Mr Peter Jones
Dec 30	10am	Tock Ch	Worship led by members of the congregation

**NORTHWICK LUNCHEON GROUP:** This meets at 12.30pm on Wed. 5<sup>th</sup> December. To book your lunch please ring 416528

**TOCKINGTON LUNCHEON GROUP will not meet in December**

**COFFEE MORNINGS:** Sats 10.30 - 12 noon in Olveston Methodist Hall

**PRAYER MEETINGS** Tuesdays 9.00-10.00 in Olveston Methodist Church.

**HOUSE GROUP:** Please see Church Newsletter for details.

**THE OLVESTON COMPUTER CLINIC:** no longer functioning.

**CONTACT:** Rev Simon Edwards Tel 01454 418176, email  
simon.edwards@methodist.org.uk



## **THE VINE House of Prayer**

Pilning Street, Awkley BS35 4HL

Sundays at 10.30am and Mondays and Wednesdays at 7.30pm We also visit other Churches and events so please check our Notice Board or contact: **Mike and Barbara Matthews**, tel. 07512 917229 or email: **thevine\_awkley@hotmail.com**

## **THE OASIS CHURCH, OLD DOWN**

Dec 2	6.30pm	Wully Perks
Dec 9	6.30pm	James Gulliford
Dec 16	6.30pm	Phil Moulden, Carol Service
Dec 23	6.30pm	Ceri Morgan-Davies
Dec 30	6.30pm	Lyllal Drewett

Each Thurs at 6.30pm Prayer & Praise Time

Contacts Jenny Parfitt [jennyparfitt@ymail.com](mailto:jennyparfitt@ymail.com)

Sue Tett [stett56@hotmail.co.uk](mailto:stett56@hotmail.co.uk)

**AUST EVANGELICAL CHURCH** Family Worship 11.00am

For more details contact Danny Bamfield 01454 419324.

e-mail [danny@thebamfields.co.uk](mailto:danny@thebamfields.co.uk)

## **LITTLETON EVANGELICAL CHURCH**

Evening Worship every Sunday at 6pm for details tel. 413247

**RC CHURCH OF CHRIST THE KING**, Thornbury -

Sun 8.30am Mass 11.00 Family Mass

Monday-Friday Daily Mass at 10am

Tel 01454 412223 [www.ctk-thornbury.org.uk](http://www.ctk-thornbury.org.uk)

**SOCIETY OF FRIENDS (QUAKERS)**, Thornbury

Meeting for Worship Sundays 10.30-11.30: The Hanover Room, The Chantry, Castle St. Wheelchair accessible. Children welcome with prior notice.

**Local contact:** Roger Howell [rog3er2@gmail.com](mailto:rog3er2@gmail.com) 01454 415035

**National:** [www.quaker.org.uk](http://www.quaker.org.uk) **Bristol area:** [www.bristolquakers.org.uk](http://www.bristolquakers.org.uk)

# Diary Dates for December 2018

The information given below is believed to be correct as we go to press.

1 <sup>st</sup> Sat	Coffee morning Litter Pick Thornbury Choral Soc. concert	10.30-12.00 1pm 7.30pm	MH PH CS
3 <sup>rd</sup> Mon	Donkey Nativity Carol Concert, Rudgeway, 3 <sup>rd</sup> to 15 <sup>th</sup> , except Sunday, ticket only. Monday Movie	6.30pm 7.30pm	 StM
4 <sup>th</sup> Tues	Friends of Daldry Gardens Coffee morning Tea/Coffee & Bisc. 50p Monthly Raffle British Legion Women. Bring some nibbles	10.30 -12.00 7.30pm	DGCL DGCL
5 <sup>th</sup> Wed	Holy Communion followed by tea and cake. Table Tennis every week OPHS Underground Bristol, Hamish Orr-Ewing 'Frosted' Pilning VH until 8 <sup>th</sup> incl Sat 1.30	2.30pm 7.00-8.30pm 7.30pm. 7.30pm	DGCL PH OMC
6 <sup>th</sup> Thurs	Coffee Shop Olveston Playgroup Thornbury Farmers' 'Market	9-12 09.30-11.30 09.00-1.30	OS+ MH
7 <sup>th</sup> Fri	Haven Memory Café Thornbury Carers Support Group Tableaux of Carols & Songs, also 8 <sup>th</sup> Almondsbury School Christmas Fayre	10.15-11.45 1-3pm 10am-5pm. 6-8pm	URC Chy AMC
8 <sup>th</sup> Sat	St Peter Hospice Bazaar Thornbury Food & Gift Fair, Castle St. Coffee Morning Coffee Morning Alveston Singers at St Mary's Thornbury	10-12 10-2 10..30-12.00 10.30-12.00 7.30pm	TMH MH AVH
9 <sup>th</sup> Sun	Tableaux of Carols & Songs, Salvation Army Concert	12-4 7.30pm	AMC StM
10 <sup>th</sup> Mon	Coffee Morning	10.30-12.00	MH
11 <sup>th</sup> Tues	Friends of Daldry Gardens Coffee morning Thornbury Memory Café WI. Christmas meeting, American Supper Alveston Singers	10.30-12.00 10.15-11.45 7.30pm 7.30pm	DGCL TMH PH AMC
14 <sup>th</sup> Fri			
15 <sup>th</sup> Sat	Coffee Morning	10.30-12.00	MH

	Parish Council Surgery	10.30-12.00	MH
17 <sup>th</sup> Mon	Monday Movie	7.30pm	StM
18 <sup>th</sup> Tues	Friends of Daldry Gardens Coffee morning	10.30-12.00	DGCL
19 <sup>th</sup> Wed	Carols on the Green, Tockington Olveston Parish Council Jazz at the White Hart Olveston	7.30pm 7.30pm 8.30pm	AP
20 <sup>th</sup> Thur	Coffee Shop Olveston Playgroup, Term ends	9-12 09.30-11.30	Ost MH
21 <sup>st</sup> Fri	Haven Memory Cafe	10.15-11.45	URC
22 <sup>nd</sup> Sat	Coffee Morning	09.00-12.00	OSt
24 <sup>th</sup> Mon	Coffee morning	10.30-12.00	MH
25 <sup>th</sup> Tue	Christmas Day		
26 <sup>th</sup> Wed	Boxing Day		
29 <sup>th</sup> Sat	Coffee Morning	10.30-12.00	MH
30 <sup>th</sup> Sun			

## Looking ahead to January

9 <sup>th</sup> -12 <sup>th</sup>	Robin Hood (2.30 Sat matinee)	7.30	CTK
12 <sup>th</sup>	Wriggle Jigglers Folk Concert	3pm	CH

**KEY:** AC Aust Church; AH – Armstrong Hall; AMC – Alv Meth. Ch.; AMH- Alv Meth. Hall; AP – Alexandra Pavilion; AVH – Aust Village Hall; CH – Cosham Hall; Chy – Chantry; CS Castle Sch. CTK Christ the King DGCL – Daldry Gardens Community Lounge; EVH – Elberton Village Hall; LVH Littleton Village Hall MH – Olv.Meth.Hall; OMC Olv Meth Ch OS – Olv. School; OSt – Olv. Stores; OSH Old Sch. Hall Alm; PH – Olv Parish Hall; StM St Mary's Church, Olv.; StMA Almondsbury Church StMTSt Mary's Thorn TCh Tock Chapel; TBCh - Thornbury Baptist Church; TMH – Thorn. Methodist Hall; ; TMS Tock Manor Sch.. URC United Reform Ch Th

**Contact details** for any clubs or organisations in the Meeting Point area can be found in the Meeting Point Directory on the community website: [www.olvostonandaust.com](http://www.olvostonandaust.com). If you would like to update your organisation's details, please email: [meetingpointsecretary@olvostonandaust.com](mailto:meetingpointsecretary@olvostonandaust.com)

**Advertisements** Neither Meeting Point, its editor, nor management committee accept any responsibility or give any guarantee in case of any dispute or claim as to quality, condition or delivery of commodities or services advertised in this magazine. It is not to be taken that publication implies recommendation. It is always advisable to check prices when ordering goods or services.

**Views** expressed by contributors are not necessarily those of the editor or Meeting Point magazine.

**Copyright Meeting Point 2018.** Copyright remains with the author(s) and Meeting Point. No part of this publication may be reproduced or transmitted in any form without the prior permission of the copyright owners.

Meeting Point is printed by Motion Printing LTD.

## 2018/2019 CHRISTMAS AND NEW YEAR OPENING HOURS

### DECEMBER

### JANUARY

#### LOCAL SHOPS

	<u>SAT 22ND</u>	<u>SUN 23RD</u>	<u>MON 24TH</u>	<u>TUE 25TH</u>	<u>WED 26TH</u>	<u>THU 27TH</u>	<u>FRI 28TH</u>	<u>SAT 29TH</u>	<u>SUN 30TH</u>	<u>MON 31ST</u>	<u>TUE 1ST</u>	<u>WED 2ND</u>
Oveston Stores	06.30 - 19.30	07.30 - 18.30	06.30 - 19.30	Closed	Closed	06.30 - 19.30	06.30 - 19.30	06.30 - 19.30	07.30 - 18.30	06.30 - 19.00	06.30 - 13.00	06.30 - 19.30
Post Office (lunch from 1 to 2pm)	09.00 - 12.30	Closed	09.00 - 13.00	Closed	Closed	09.00 - 17.30	09.00 - 17.30	09.00 - 12.30	Closed	09.00 - 13.00	Closed	09.00 - 17.30
The Crusty Loaf	07.00 - 14.00	Closed	07.00 - 13.00	Closed	Closed	Closed	Closed	07.00 - 14.00	Closed	07.00 - 13.00	Closed	Closed
Origins Butcher	Closed	Closed	08.00 - 13.00	Closed	Closed	Closed	Closed	Closed	Closed	Closed	Reopens 3rd January Sat - 13.00	
Old Down Country Park	10.00 - 16.00	10.00 - 16.00	10.00 - 16.00	Closed	Closed	10.00 - 16.00	10.00 - 16.00	10.00 - 16.00	10.00 - 16.00	10.00 - 16.00	Closed	10.00 - 16.00
Old Down Ice Rink and Aeris Skate Barn	10.00 - 20.00	10.00 - 20.00	10.00 - 20.00	Closed	Closed	10.00 - 20.00	10.00 - 20.00	10.00 - 20.00	10.00 - 20.00	10.00 - 16.00	Closed	TBA

#### ALVESTON SHOPS

Perry and Son Butchers	07.00 - 13.00	08.00 - 13.00	06.00 - 12.00	Closed	Closed	08.00 - 13.00	08.00 - 17.30	07.00 - 13.00	Closed	08.00 - 13.00	Closed	Closed
Alveston Stores	06.00 - 22.00	06.00 - 22.00	06.00 - 22.00	08.00 - 20.00	06.00 - 22.00	06.00 - 22.00	06.00 - 22.00	06.00 - 22.00	06.00 - 22.00	06.00 - 22.00	08.00 - 22.00	06.00 - 22.00
Alveston Pharmacy	09.00 - 13.00	Closed	09.00 - 18.00	Closed	Closed	09.00 - 18.00	09.00 - 18.00	09.00 - 13.00	Closed	09.00 - 13.00	Closed	09.00 - 18.00

#### HEALTH AND BEAUTY

Vicarage Farm	09.00 - 18.00	Closed	Apts. only	Closed	Closed	Apts. only	Apts. only	Apts. only	Closed	Apts. only	Closed	09.00 - 18.00
---------------	---------------	--------	------------	--------	--------	------------	------------	------------	--------	------------	--------	---------------

#### GARAGES

Green Lane Garage*	Closed	Closed	Closed	Closed	Closed	Closed	Closed	Closed	Closed	Closed	Closed	07.30 - 18.00
AFS Motor Engineers, Eberton Garage	Closed	Closed	Closed	Closed	Closed	Closed	Closed	Closed	Closed	Closed	Closed	08.30 - 17.00

#### COUNCIL SERVICES

Thornbury Library (staffed hours)	09.30 - 12.30	Closed	9.30 - 13.00	Closed	Closed	Closed	09.30 - 17.30	09.30 - 12.30	Closed	9.30 - 17.30	Closed	9.30 - 17.30
Thornbury Library (unstaffed hours)	8.00 - 9.30 12.45 - 19.30	08.00 - 19.30	8.00 - 9.30 13.15 - 15.30	Closed	Closed	08.00 - 19.30	8.00 - 9.30 17.45 - 19.30	8.00 - 9.30 12.45 - 19.30	08.00 - 19.30	8.00 - 9.30 17.45 - 19.30	Closed	8.00 - 9.30 17.45 - 19.30
All 'Sort It' Centres	08.30 - 16.30	08.30 - 16.30	08.30 - 14.00	Closed	Closed	08.30 to 16.30	08.30 to 16.30	08.30 to 16.30	08.30 to 16.30	08.30 to 16.30	Closed	08.30 to 16.30

### SUPPORT YOUR LOCAL TRADERS

**NB: TIMES CORRECT AS AT GOING TO PRESS**

\* Green Lane Garage emergency number: 07885 432278



#### EMERGENCY NUMBERS

999 POLICE FIRE AMBULANCE  
112 EMERGENCY NUMBER (FROM A MOBILE)

111 NATIONAL NON-EMERGENCY MEDICAL NUMBER  
101 NON-EMERGENCY NUMBER FOR THE POLICE (15P PER CALL)

