

# Meeting Point



August 2022

**TRUE BLUE TAXIS**  
(OLVESTON)

**Local Taxi Company**



**Honest, Reliable and Safe**

**Cash or Card Payments**



**Mobile:**

**07967 042794**

## Top-to-Tail Housekeeping

- Professional
- Dependable
- Comprehensive service

**Trading  
Standards  
Accredited**

**Felina  
Contract Cleaning**

01454 201562  
07790 050187  
cleaning@felina.biz  
www.felina.biz



**Weddings | Funerals | Bouquets | or just because...**

**Beautiful  
flowers for any  
occasion...**

Our Shop is open Tuesday to  
Saturday ~ 9.00am to 5.00pm

Taking walk in and phone orders

Delivering to BS35 and  
surrounding areas ~ Tuesday to  
Saturday from 9.00am to 5.00pm

Holding socially distanced  
meetings for weddings and  
memorials should you wish to  
discuss plans

Please call for prices or pop into  
the Shop in The Arcade,  
Thornbury



**t: 01454 416111  
e: flowers@joliesfleurs.co.uk**



**THORNBURY  
Chiropractic  
CLINIC**

[www.thornburychiropractic.co.uk](http://www.thornburychiropractic.co.uk)

The Georgian House, 6 The Plain

**Chiropractic**

Johnatan Williams Msc DC

Carol Williams MSc DC

**Acupuncture**

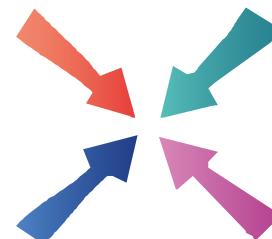
David Sanders Lic Ac. M.B. Ac.C

**Massage**

Josie Cole MTI

*Open weekdays 8.30am-7pm  
and Saturday mornings*

**01454 418259**



# Meeting Point

**Volume 46, Number 11, August 2022**

The community magazine for the villages of Olveston,  
Tockington, Old Down, Lower Hazel, Awkley, Ingst, Aust, Elberton and Littleton upon Severn

### EDITOR:

**Marelin Orr-Ewing**  
Courtlands  
Olveston  
Bristol BS35 4DU  
Tel: 01454 610081  
[meetingpointeditor@  
gmail.com](mailto:meetingpointeditor@gmail.com)

### ASSISTANT EDITOR:

**Angela Williams**  
Ashlea  
Haw Lane  
Olveston  
Bristol BS35 4EG  
Tel 01454 612850  
[meetingpointmagazine@  
gmail.com](mailto:meetingpointmagazine@gmail.com)

### ADVERTISING:

**Bernard Amos**  
Tel: 01454 620388  
[meetingpointadvertising@  
gmail.com](mailto:meetingpointadvertising@gmail.com)

Publication date  
*1st of each month*

Material for September 2022  
to the Editor or Deputy Editor  
by August 8th 2022

## From the Editor

I am really happy with the number of articles we have got this month, describing a variety of enjoyable activities that have been going on locally. The first to arrive was from the Scouts - a lively and upbeat account of their recent Fiesta at Woodhouse Park - it brought back memories of my own sons going there, when they were Scouts back in the 80s. Then, as promised, we have got articles, with pictures, of the celebrations held in Old Down and Aust over the Jubilee weekend. Olveston and Tockington WI has sent in an item which outlines their busy and entertaining sessions so far this year. Add to this all the events which are yet to come, and it is a very full edition.

This month's cover, a painting of the green lane behind Elberton by local artist Adrian Holmes, is quite special. Adrian has offered the proceeds from the sale of this painting to Meeting Point, to pass on to a charity or 'worthy cause' of our choice. Find out more about this generous offer on page 9.

Meeting Point Founded in 1976 by the Anglican and Methodist churches in Olveston, near Bristol.

Meeting Point magazine and Meeting Point Directory are online at the  
Community Website: [www.olvostonandaust.com](http://www.olvostonandaust.com)



# Thornbury Motors

- New and Used car sales
- Servicing, repairs and MOTs on all makes



thornburymotors.co.uk 01454 412535



Grovesend Road  
Thornbury  
Bristol  
BS35 2EF



## SAVAGE ASSOCIATES

Accountants·Business Advisors  
Corporate & Personal Tax Consultants

The Coach House, Aust Road  
Olveston, Bristol BS35 4DE  
Tel 01454 610388 Fax 01454 201541

for an initial consultation please contact:  
edd.savage@savageassociates.co.uk

## Vicarage Farm Holistic Therapy Centre

**Bringing balance back  
into your life.  
Offering a wide range of  
Holistic Treatments.**



### Hypnotherapy

A safe and effective treatment: to remove stress, anxiety, depression and phobias. Allowing positive and powerful changes in your life.

Tel 01454 614390  
www.vicaragefarm.org

## News from 1<sup>st</sup> Olveston Scout Group

It's been a fabulous summer already (with much more to come) and so we thought it timely to update you on what we've been up to and to advertise forthcoming events. The Group is in fine spirits after playing our part in the fabulous Platinum Jubilee Parade at the start of June and it was followed, just a week later, by 'The Big Fiesta', which brought together around 1,000 Beavers, Cubs, Scouts and Explorers and nearly 200 Leaders at Woodhouse Park.



Following two years of cancelled Scouting events, including camps and jamborees, it was a complete delight to be able to attend such a large and vibrant Scouting event. On a warm weekend in June, the Cotswold Edge and South Bristol District Commissioners arranged a weekend at Woodhouse Park Scout Camp, where our young members were able to try a vast range of activities: hovercraft driving, backwoods cooking, air rifle shooting, climbing, abseiling, tree top ropes course, tomahawk /axe throwing, archery, robots, drones, remote control cars, zorbing, quad bikes, Scalextrics, pedal go karts, trampolines, assault course, escape room, crafts, teamwork activities, crazy golf, outdoor chess, water slides, inflatables and laser quest games – which would you choose?

We are really proud of the 1st Olveston Scout Group members - not only did we have very strong attendance from all the sections, but our confident and socially aware youngsters volunteered for additional duties. Olivia Thomas, Stella Askey, Emily Gingell and Thea Tibbatts volunteered to help the District Commissioners conduct a guided tour for a special visitor, the Queen's Representative, Mrs Sheila Wileman MVO, who has been Secretary to the Lord Lieutenant of the County and City of Bristol since 1996. Sheila is a great



# D. YOUNG

## GARDEN SERVICES

Fully Qualified with over 16 years Experience  
Grass Cutting Hedge Cutting Turfing Fencing  
General Landscaping

Tel: 01454 416206 Mob: 07545 131488  
Email: d.younggardenservices@hotmail.com



### MD Aerials

Call Michael Dagger

**T: 01454 418 341 M: 07817 304 236**

Freeview – Freesat – Sky – DAB Aerials

Wall mounting LCD & Plasma  
televisions setting up & tuning

**freesat**

Freeview

mike@mdaerials.co.uk  
www.mdaerials.co.uk



### T. EDWARDS PLANT

#### Digger and Driver Hire

- Site/garden clearance
- Footings
- Drainage/soakaways
- Driveway preparation
- Stump removal
- Fencing & turfing
- Narrow access equipment



**Price or day work t: 07900 372349**  
**t.edwardsplant@gmail.com**  
CPCS/CITB qualified & insured

# S.J FARR

## KITCHEN FITTING SERVICES

Mobile: 07915673649

Our Associated Services Include:

- Plumbing
- Wall & Floor Tiling
- Decorating
- Plastering

City & Guilds Qualified

### Geoff Gulliver

#### Carpentry & Joinery, Littleton

ALSO  
UPVC Doors, Windows and  
Conservatories. For a very  
competitive **FREE** estimate

**Ring (01454) 414947**

# Divine

## Bathrooms & Wet Rooms

07584 666154  
Email: info@divinebathrooms.co.uk  
Web: divinebathrooms.co.uk



friend to Scouting in the region and this year she successfully nominated Avon County Scouts (of which we are part) for the Queen's Award for Voluntary Service, which was confirmed as part of the Queen's Birthday Honours and is the highest

award a local voluntary group can receive - all group members will soon receive a special badge to mark this award. Additionally, our four Fiesta volunteers were rewarded for their confidence and professionalism by Sheila, who bought them ice creams at the camp shop!





## Our newly extended stylish Thornbury Showroom now offers a Cash & Carry service

We have lots of carpet and vinyl remnants – are you looking for quality flooring at greatly reduced prices?  
Why not pop along and see what we have in stock.

We offer FREE home visits, measures and quotes



**LAMINATE | CARPETS | VINYL | ARTIFICIAL GRASS  
READY TO TAKE AWAY ON THE DAY**

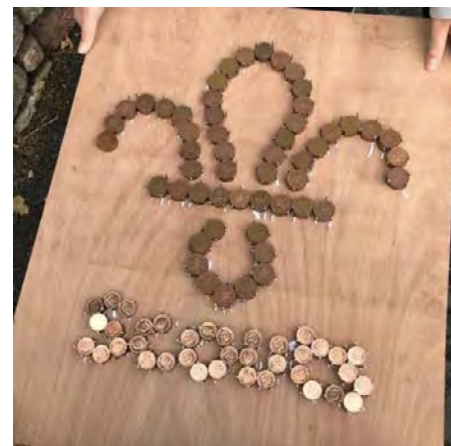
**Phoenix Flooring  
Limited** 

Unit 15 Hemingway Business Centre, Walker Way,  
Thornbury Bristol BS35 3US  
Opening Hours: Mon to Sat 9am – 5pm

DISABLED  
ACCESS

To finish off a fantastic day, there was a super-sized game of prize bingo – well done to Kai Tibbatts who won a remote-control car and numerous Scout souvenirs, for the last full house of the evening. We were very proud of our Cubs who entered the talent competition at the last-minute, Ellie Young, Megan Thomas and Ivy-Kate Forey entertained everyone with their musical hula-hoop performance. The talent show was very popular, and standards were extremely high, especially from the groups who had planned to enter and had clearly practised ahead of the day. We were also proud of one of our Cubs, Henry Venton, who volunteered to be one of the “Scouts’ got Talent” judges. Henry sat alongside the District Commissioners and an Explorer Scout and gave his honest opinion of each act in front of the 1,000-strong audience. Henry’s most amusing comment was *“well, that performance had me glued to my seat, in fact it’s just as well I was glued to my seat as otherwise I would have got up and walked out!”* Overall, it was a great day, and our special thanks go to the 1st Olveston Group Leaders who went to the Fiesta: Hannah Cameron, Iain Johnstone, Matt Thomas, Nick Gingell, Andy Hollingdale and James Askey.

With more to look forward to as the Cubs head to the coast for camp in late July and we return for what we hope will be a ‘normal’ year after the school holidays, we plan to hold our AGM at 18.30 at the Scout Hut on Monday 19<sup>th</sup> September – parents and local supporters are all invited and welcome. The 1<sup>st</sup> Olveston Scout Group Committee and leadership team is entirely made up of volunteers, so why not join us? If you would like a rewarding opportunity to support your community and local Scout Group, while having lots of fun, please get in touch with the Group Chair (Ange: 07710 452009). We welcome any relevant experience or skills, but the main attribute we seek is enthusiasm!



## The Line of Coins is Back

Save your coins and the date:

1<sup>st</sup> Olveston ‘Line of Coins’ is coming back to Olveston.

Saturday 1<sup>st</sup> October at 10am

from the Crusty Loaf to Olveston  
Stores .....and maybe  
back again.

**2 Men Went To Mow**

All Aspects of Garden Maintenance, Plants & Shrubs Supplied, Garden Rubbish Removal, Fully Insured

Garden and Tree Service Tel: 07956 311901  
Local, Friendly and Reliable Email kev@2menwenttomow.co.uk

Tree Surgery (NPTC Qualified)  
All Types of Tree Work Undertaken  
Contract Grass Cutting  
Beds & Borders Maintained  
Pruning and Hedge Cutting  
Planting

**FREE ESTIMATES!**

**L. & J. GULWELL**

Independent Family Funeral Directors

1 Quaker Lane • Thornbury

Tel: (01454) 418779

24hr Service

email: info@funerals.uk.net www.funerals.uk.net

Private Chapels of Rest

**COMPANION AND DRIVING SERVICE**

**Now taking bookings in your area!**

- For people of all ages unable to drive but wish to remain independent
- Supported trips to the doctor, hospital, shops, bank, hairdresser, vet, etc.
- Social outings, holidays, help at home and much, much more
- DBS checked and First-Aid trained
- Dementia friendly
- Wheelchair Accessible Vehicle
- Fully Licensed

To book your Daisy  
**07951 079 558 / 0333 014 6211**  
northbristol@drivingmissdaisy.co.uk  
www.drivingmissdaisy.co.uk

**Top quality Nursing and Residential Care**

**Beech House**

Beech House Care Home provides excellence in all aspects of care for all our residents, offering the best in nursing care for the elderly and residential care for people with a diagnosis of dementia.

Our unique care service includes:

- beautiful gardens
- purpose built homes with 24/7 air circulation
- spacious rooms and wide corridors
- top quality chefs
- television with DVD and telephone in each room
- wheelchair provision at no additional cost
- high technology baths and walk-in showers
- regular minibus trips
- programme of interesting and stimulating activities

**RECENTLY RATED Outstanding by Care Quality Commission**

To arrange a visit, telephone **01454 412266**  
For more information see [www.bristolcarehomes.co.uk](http://www.bristolcarehomes.co.uk)

**Bristol Care Homes**  
providing a unique care service

## Cover Painting to Raise Funds for Marlwood School

Adrian Holmes, whose beautiful painting is on our front cover this month, was interviewed for the May edition of the magazine. In that article he described how he ended up living in Olveston, his love of painting, his studio and the gallery space he is planning. At the end of the interview Adrian made a very generous offer: he would donate the proceeds of the sale of this painting to a charity - or 'worthy cause' - of our choice.

We have liaised with Friends of Marlwood School (FOMS), who suggested that the school's Art Department would be an ideal recipient. In fact, they could make very good use of some additional funds to purchase printing equipment for pupils to use. Our initial thoughts were to run an auction but, for various reasons, this was not going to be straightforward. Adrian has therefore offered to sell the painting through his website, and then donate the proceeds to FOMS.

So, to get a chance to purchase this original painting, and at the same time help Marlwood pupils who are studying Art, visit [adrianholmesart.com](http://adrianholmesart.com). In fact, why not visit Adrian's website anyway and see other examples of his work. Adrian's contact details are: [ahasales6@gmail.com](mailto:ahasales6@gmail.com).

All of us at Meeting Point, and our contacts at Marlwood, are very grateful to Adrian for this very kind and helpful offer. Thank you.



## CRUK Tortworth Event

Tortworth Lake is a beautiful setting for Thornbury and District Cancer Research Committee to hold their next fundraising event on Sunday 7th August, from 10am - 4pm.

We will be serving tea, coffee, soft drinks and cake throughout the day, which you are invited to purchase after a leisurely walk around the lake.

Directions: Go up A38 towards Falfield, take the turning for the motorway and head towards Charfield. After the lay-by on the right, take the right lane down a rural track to the end for parking for Tortworth Lake.



www.olvestonpreschool.co.uk/pilning-site

*pilning pre-school*

...a wonderful place to grow!

# Pilning Pre-School

**NOW OPEN!**

Offering amazing childcare to children aged 2-5 at the heart of our local community.

Pilning Village Hall  
Open 9:00am - 3:00pm  
Tel: 01454612074

Find us on Facebook

## Old Down's Platinum Jubilee Street Party

*Peter Floyd*



Before Olveston's Parade and other events on Friday, Tea on Tockington Green on Saturday and A Coronation Service (with trumpets) at St Mary's Olveston on Sunday, Old Down's celebration came first, on Thursday 2<sup>nd</sup> of June.

The sun shone and The Down was closed between either end of the Inner Down and life moved onto the street for the day. Bunting was strung from house to house across the street and flags were flown.



Tables were collected and set up in a long line, with white paper tablecloths and added to by a variety of personal furniture so that folk from Old Down and all around - young and old - could enjoy getting to know quite a lot of neighbours. There was a picnic, plus cream teas and a cake competition.

There were many games for the children, some in an adjacent paddock, such as bun bobbing and hopscotch on the road. One of the best was a huge pile of cardboard boxes into which scooters could be driven to dramatic effect. An Auction of Promises took place in The Fox in the evening. At the end of a lively afternoon, toasts were drunk, and the National Anthem was rather erratically, but enthusiastically, sung to loud cheers.

 **PawsPetCare**  
...simply for the love of animals

Providing care for your pets  
when you need it

Contact Helen for a friendly and reliable service  
07493 153520 or [enquiries@pawspetcare.com](mailto:enquiries@pawspetcare.com)  
[www.pawspetcare.com](http://www.pawspetcare.com)

## Frontline Martial Arts

Traditional Martial Arts / Taekwondo

Mighty Mites (under 10's): Fridays 4.30-5.15pm at  
Juniors (ages 10-13): Mondays 7.15-8.15pm  
Adults/over 13's: Mondays 8.15-9.45pm  
at Alveston Youth Centre



Tel: 07771 692222  
[www.frontline-ma.co.uk](http://www.frontline-ma.co.uk)

## SEVERN SIDE TAXIS

SIX SEAT COMFORT  
AIR CONDITIONED CAR



AIRPORTS  
BUS STATIONS

HOSPITALS  
EVENINGS OUT

RING STEVE WARD  
**07879 601011**

## THE WHITE HART INN Olveston



Traditional 17th Century English Pub

Catering for Parties and Functions  
Wide variety of cask & keg beers  
Skittle alley & pool table available  
Book now for Skittle Matches  
Award winning courtyard garden

Telephone: 01454 612175

## FRANCIS DESIGN & BUILD Carpentry & Building Services

For all aspects of carpentry

Doors, Skirting, Kitchens, Fencing,  
Decking, Stairs, Timber frame etc.

Call Craig on 07970 514409  
(or, if busy)

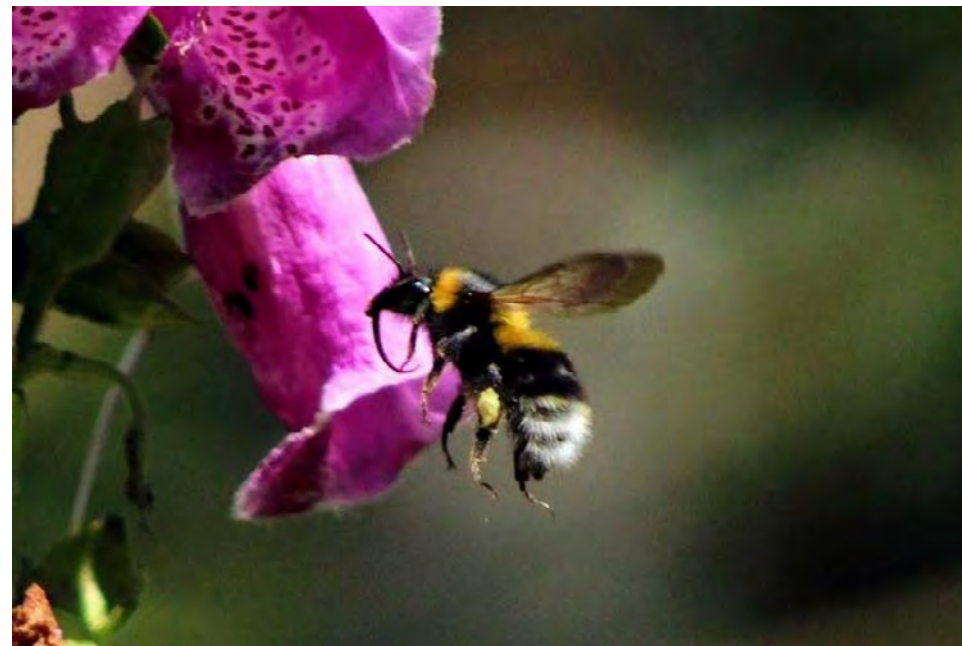
email: [craigyoung0308@live.co.uk](mailto:craigyoung0308@live.co.uk)

# The Life Cycle of a Bumble Bee

Paul Godwin


Did you know that in the UK there are approximately 270 species of bee, of which 25 are bumble bee (*Bombus*)? Others are solitary bees and the honeybee. Of the bumble bees, there are commoner species which we are much more likely to see in our gardens, including the garden bumble bee, the white-tailed bumble bee, the buff-tailed bumble bee, the common carder bumble bee, the early bumble bee and large red tailed bumble bee, all of which we can see locally.

Hopefully when you read this in August the bumble bees that we have in our countryside and gardens will have plenty of nectar and pollen rich plants to feed on, so their colonies can continue to thrive. Writing this at the beginning of July, bumble bees have had quite a tough time with a lot of wind and rain, so not the perfect start for their summer season. It is important that they are able to fly and continuously feed from spring into summer.




The bee in this photograph is a garden bumble bee and was taken in June 22. It is nesting in a rockery area in our garden and feeding on foxgloves. Differentiation between some bumble bees can be quite difficult; in identifying this bee the key factor was its very long tongue which is very suited to flowers such as foxglove, also the double yellow band on its thorax accompanied by a



**Severnside Heating & Plumbing** 

- Installations
- Servicing
- Repairs

Working locally since 2003. An experienced heating and plumbing engineer. For a no obligation quote please call Mike  
Mob: 07554 825813 Tel: 01454 613780



**LA Electrical Services**

Sockets, Lights, Security Lighting, Landlords Reports, Inspection & Testing, Consumer Units, Electric Heating, Rewires, New Builds, Garden Electrics, Car Charging Points, Solar PV, and More..

**Your Local Electrician Richard Corney**

  **01454 633 336**  
laelectrical.com



**"The Friendly pub where you arrive as our Guest and leave as our Friend"**

**BOARS HEAD AUST**

01454 632278

- Your local friendly Village pub
- Open 7 days a week
- Food Served from 12.00pm to 9pm every day
- 1<sup>st</sup> Friday of the month is Quiz Night
- Breakfast Available
- Chefs Table Food Experience
- Parties Catered for
- Open Log Fires
- Real Ales and Premium drinks available
- 5 star Food Hygiene rating

MAIN ROAD, AUST, BS35 4AX

**Baby and Toddler Music!**



Have fun and enjoy music with your child  
Meet others and share music as well as a cuppa and maybe cake  
Suitable for ages from 0-4 with a supporting adult of any age

10:30am Wednesdays in Severn Beach Village Hall

£2-5 for an hour session dependent on numbers

FFI Contact Janet Harrison [janet\\_harrison@outlook.com](mailto:janet_harrison@outlook.com) or 07562 212435 or turn up to a session

paler yellow band on its abdomen, and the white tail. It is quite similar to the white-tailed bumble bee, which has a single yellow band on its thorax. It can be seen from March to October



This bumble bee is the common carder, it is another very common visitor to our gardens. This photograph was taken in July 22, feeding on lavender. It is quite 'fluffy' and gingery in appearance with some black striping on its abdomen. it can be found in a wide range of settings for as long as it has flowers to feed on. If you see bumble bees in your garden flying low into rough grass or other hidden areas, it is possible that you will have a nest. Make sure you protect it and keep it undisturbed so the bumble bees can go about their business.

The life cycle begins in spring when temperatures begin to rise, and the queen bumble bee awakes. The queen has been hibernating alone in the soil, using up all the reserves of fat she has stored in her body to survive winter. As you may imagine, when she emerges she is very hungry and needs to access nectar to drink and food from flowers to regain her strength and energy. Once she has regained some strength, she will then begin to search for a nest sight. This is when you may well see bumble bees entering your house or outbuildings, they are not lost, but only looking for a suitable nest site. Of course, you will not want them to nest in your house, so make sure you have open doors and windows and very gently ask them to leave! Please don't go spraying or swatting them. Typically, their preferred nesting site will be in

**motion**  
motiondesignsprint

**Do you know we print the Meeting Point Magazine?**

We also print for lots of local clubs, events and businesses.

Based in Severn Beach we offer convenient off-road parking right outside our door!

We print everything from Wedding Stationery to Business Stationery

Our professional design and modern printing techniques have saved time and money for lots of people.

**Fast, efficient and professional.**

Why not let us print for you?

**01454 631289**  
info@motionprinting.co.uk  
www.motionprinting.co.uk

ALMONDSBURY PHYSIOTHERAPY AND SPORTS INJURY CLINIC

**Louise Brinson**  
Chartered Physiotherapist, hpc reg

Almondsbury Surgery, Sundays Hill  
Almondsbury, BS32 4DS

**Tel: 07786915442**  
**Fax: 014540615745**  
**E-mail: [physioulouise@hotmail.co.uk](mailto:physioulouise@hotmail.co.uk)**

Also at Aztec Spa Leisure Club

**ACE1**  
Window & Gutter Cleaning

**Window Cleaning**  
**Gutter Cleaning & Repair**  
**Fascia & Soffit Cleaning**  
**Conservatory Roof**  
**Solar Panel Cleaning**  
**Power Washing**

**M: 07590 201264**  
**T: 01454 436162**

 Gleaming Insurance

**Olveston and Tockington**

*Parish Hall*  
07780 515317

*A great venue for :*

- Fitness
- Parties
- Public events
- Music & Dance

Check availability & book online at [www.olvostonparishhall.co.uk](http://www.olvostonparishhall.co.uk)

*"Our newly decorated Hall"*





rough grass, an old rodents' nest, under out buildings or bird boxes. Not your living room.

Once a site has been found the queen will then collect pollen for the nest. From this she forms a mound of pollen and a wax which she secretes and then lays her first eggs. She also forms a nectar pot, which she places at the front of her mound. This is important as it is from this she will feed whilst she incubates her eggs. This stage lasts for several days after which grub like larvae emerge. Once the larvae have emerged the queen can leave the nest to collect pollen and nectar which the larvae feed on. After two weeks they have eaten sufficiently, and the larvae then spin a cocoon in which they can develop safely into adult female bees. It is worth noting if you see a queen and she has pollen sacks on her legs, she has already found a nest. A queen can be difficult to identify but in very general terms she will have a larger and longer body. This may give the impression she has short wings. The queen may also appear to have a shiny hairless back whilst the female worker bee will have a hairy or 'fuzzy' back.

It is now early summer, and this first brood of all female worker bees have emerged from their cocoons and begun to carry out work both inside and outside of the nest. Some bees go foraging for pollen and nectar and some do cleaning. The worker bees will carry on bringing pollen and nectar back to the nest now to feed the next batch off larvae. From now the queen will no longer leave the nest. She will remain inside laying more eggs.

The year progresses and it is late summer, and the nest will now produce offspring which are not female workers. They are male bees and the new queens. The males do not collect pollen for the colony, but only feed for themselves and try to mate with the new queens. The males will then leave the nest and not return. The new queens, once mated, also leave the nest and also do not return. They must feed heavily on pollen and nectar to prepare for their long hibernation in the soil, so that they have sufficient fat reserves to survive autumn and winter until they too emerge the following spring. The old queen and her nest, which she so carefully built, will come to its natural end as summer turns into autumn. Only the new queens will survive, and the life cycle of the bumble bee will begin again the next spring.

There is a lot of interesting information available on all bees. For this article I used The Bumble Bee Conservation Trust site, [www.bumblebeeconservation.org](http://www.bumblebeeconservation.org) and also the Wildlife Trust [www.wildlifetrusts.org](http://www.wildlifetrusts.org). Both have information on all types of bees.

It is interesting to observe how many different types of bees are visiting your garden. I have been quite surprised, and I am currently trying to identify some of them. Good luck if you try and photograph them, as they just will not stay still for a photograph!



### Bristol Carriage Masters

- Religious or non-religious funerals
- Bespoke funerals for burial or cremation
- Fully guaranteed pre-paid funeral plans
- Direct cremations



177 Crow Lane, Henbury, Bristol, BS10 7DR  
Telephone: 0117 950 8066  
Website: [www.bcm-funerals.co.uk](http://www.bcm-funerals.co.uk)  
Email: [admin@bcm-funerals.co.uk](mailto:admin@bcm-funerals.co.uk)

## Windmillcare Homes

— great places to Live



### Windmill House

The original, elegant home in a delightful rural setting with 2 acres of beautiful gardens delivering unrivalled care

01454 413818



### OSBOURNE COURT

Our brand new purpose-built home providing exceptional specialist dementia care in the heart of the village of Stoke Gifford

0117 944 8700

Residential, Short-term Respite  
and Day Care available

[enquiries@windmillcare.com](mailto:enquiries@windmillcare.com)

or [www.windmillcare.com](http://www.windmillcare.com)

## 'Indawes - Outdawes'

Decorating and  
Home Improvements

Painting | Wall Papering  
Floor Laying

Martin Dawes 07720 509653  
[martin.dawes@live.com](mailto:martin.dawes@live.com)

Your advert could be  
here and reaching  
1,500 households

Contact Bernard  
[meetingpointadvertising@  
gmail.com](mailto:meetingpointadvertising@gmail.com)

# News from St Mary's

Debbie Harries



## Church Fete

The annual St Mary's church fete will take place on Church Hill, and in the church grounds, on Bank Holiday Monday August 29th, 2pm to 4pm.

There will be games, things to buy, refreshments and entertainment. We're keen to have some new ideas for stalls, so if you have a suggestion, or are willing to help run a stall for an hour or so, please email: [paul.harrod@gmail.com](mailto:paul.harrod@gmail.com)

## Quiz

Our next quiz will be on September 3rd at 7.30pm  
Tickets £6 per person which includes supper.  
A maximum of 6 people per team.  
To book contact Debbie: [oboe-debbie@live.co.uk](mailto:oboe-debbie@live.co.uk)

# Friends of St Mary's

The prize winners in the July draw, held on 7th July 2022 were:

Amount	Number	Name
£150	216	Mrs J Hahn, Olveston
£75	311	Mr & Mrs A Maunder, Newquay
£25	248	Mr M Huke, Olveston
£25	596	Mr P Haworth, Olveston
£25	397	Mr & Mrs Pearce, Old Down
£25	571	Mr J Mayes, Tockington
£20	461	Mr & Mrs R Smith, Olveston
£20	460	Mr & Mrs R Smith, Olveston
£20	555	Mrs E Whitford, Tockington
£20	504	Mrs S Farr, Olveston
£10	353	Mrs J Jones, Olveston
£10	469	Mrs J Dawes, Olveston

If you are not yet a member and wish to join the lottery, please telephone Andy Phillips on 01454 614890 or email [andisp28@hotmail.co.uk](mailto:andisp28@hotmail.co.uk).

Don't forget, if you're not in – you can't win!



**Tel: 01454 885766**  
**Mob: 07724 166917**

# Ridge Roofing and Property Maintenance

Roofing ❖ Chimney Repairs ❖ Lead Work  
Guttering ❖ External Painting  
General Maintenance ❖ **FREE Estimates**



## D-CR DOMESTIC APPLIANCES

### DOMESTIC APPLIANCE REPAIR SPECIALIST

- WASHING MACHINE
- TUMBLE DRYER
- DISHWASHER
- FRIDGE FREEZER
- COOKER
- HOB OR HOOD

**Fast, friendly and efficient service**  
**Sales - Service - Repair**



**Tel: 01454 850522 - Mobile: 07917441539**  
**Email: d-cr@live.co.uk - Web: www.d-crdomesticappliances.co.uk**

## EARTHWORKSUK

We offer a range of recycled and quarried products including 6F5, type 1, topsoil and decorative stone. These can be delivered straight to you on site or collected from us at our yard in Cromhall. Check out all we can offer you on our website or contact us using the details below.

Skip Hire

Top Soil

Recycled Aggregates

Grab Lorry Hire

Tipper Hire







info@earthworksuk.co.uk www.earthworksuk.co.uk

Orders Line: 07782472727

Bristol: 01179 828265 - South Glos: 01454 501037




## Lending with Heart and Mind

South Gloucestershire Council fund a not-for-profit loan scheme for homeowners and landlords\*.

We understand the expense of maintaining your home and we work with you to take the stress out of funding repairs, improvements or adaptations.

We see you as an individual, not a credit score. Our knowledgeable team of advisers will guide you through the process of applying for a home improvement loan.

For a no-obligation assessment or more information visit [www.lendology.org.uk](http://www.lendology.org.uk) or call 01823 461099

Heatherton Park Studios, Bradford on Tone, Taunton, TA4 1EU

\*subject to eligibility

# Aust Parish Council

## Jubilee Celebrations

The weather forecast was for heavy rain all day on Sunday, 5<sup>th</sup> June. However, we were lucky our Parish Jubilee event was mainly dry. It wasn't quite right for picnic blankets on the ground, but nevertheless we reckon that more than 150 people from Aust, Elberton and Littleton came along to enjoy the activities in the Boar's Head field at Aust. Most picnics were eaten in the shelter of the big tent.



The afternoon started with a children's fancy dress parade – there were superheroes, a knight in armour, a royal hot air balloon, a starfish and even a little Queen Elizabeth. Everyone received a prize, but first prize went to hot air balloon Natalia Lacson (aged 7) from Littleton, pictured here in her costume.

A children's adventure party team from Bristol kept the children immersed in their interactive superhero adventure for more than an hour.

The 'It's a Knockout' challenge was highly competitive. Aust set an early lead with their convincing win in the tug of war. After that the supporters showed both their approval and disapproval of the judges' decisions as the teams battled in: wellie throwing, relay

racing under a black plastic sheet, plank walking and finally cabbage dribbling. Slowly and surely Elberton's crack team of six showed their prowess and gathered momentum on the scoreboard to romp home with the cup. Thank you to the comperes, those unpopular judges, the team captains, participants, and supporters from all the villages for making the event so successful.

The Boar's Head was very generous in letting us hold the event in their field, a big thank you to the team there. The biggest thanks, of course, go to the amazing team of volunteers who worked so hard to bring the event together and put on what we hope was a memorable day for our community.



# LINELA

embroid | print | promote

One place for everything promotional.  
Specialising in embroidery,  
printing and branded gifts



**T Shirt Printing**  
**Sports wear**  
**Work wear**  
**School wear**  
**Promotional Products**

Call us: 01454 615300

Email us: [sales@linela.co.uk](mailto:sales@linela.co.uk)

[www.linela.co.uk](http://www.linela.co.uk)



**Livewire Electricals**  
Electrical & Mechanical Solutions



Domestic, Commercial  
and Industrial Installations

All electrics for new build, extensions and alterations to satisfy mandatory Building Regulations. Landlords safety inspections  
Portable Appliance Testing (PAT)  
Electrical and electronic service and repair  
For 24 hour call-out service available please call Peter Jones: Tel: 07880 858785  
Email: [pete.livewire@blueyonder.co.uk](mailto:pete.livewire@blueyonder.co.uk)  
Local number Tel: 01454 613482  
Visit our web site at  
[livewire-electrics.co.uk](http://livewire-electrics.co.uk)

**BonneFreshClean**  
Carpet & Upholstery Cleaning Specialists

Love the look and smell of clean and fresh carpets and upholstery?

Bonne Fresh Clean brings to you a professional carpet and upholstery service that will leave them sparkling and fresh.

Call for a free no obligation quote today!

- Thorough, gentle deep cleaning, no residues
- Child and pet friendly treatments
- Latest industry approved qualification and full insurance



Bonne Fresh - Relax and enjoy beautifully clean and fresh carpets and upholstery!

T: 01454 436001 M: 07774 908410

W: [www.bonnefreshclean.co.uk](http://www.bonnefreshclean.co.uk)

44 Townsend Lane, Almondsbury, Bristol, BS32 4EQ



**People Can't Work Without Tools!**

Thornbury Rotary Club, along with other Rotary clubs, has been supporting "Tools for Self Reliance" for many years. It is a UK based charity working to help relieve poverty in Africa by renovating and sending redundant tools to them. They then work with local African organisations to deliver a programme of tools and training that brings about effective and sustainable change for carpenters, builders, blacksmiths, artisans and their communities. Primary countries they work in are Ghana, Malawi, Sierra Leone, Uganda and Zambia.

So, if you have tools you no longer require, please contact Rotarian

**Robin Cole-Morgan on 01454 414281**

He will arrange to pick up the tools and take them away at a time that suits everyone.

**What you could declutter and donate:**

Garden Tools and Workshop Tools (for example, spanners, screwdrivers, chisels, planes, and hammers). They can be hand tools or powered.

Thank you!



*Richard and Karen from the Boar's Head*

## Next Council Meeting

The Parish Council takes a break from meetings in August. Our next meeting will be held on Tuesday 13<sup>th</sup> September at 7:30pm in Elberton village hall.

Councillors, or I, can still be contacted about any local issues over the holidays, though response times may be slightly longer than normal.

Emma Pattullo, Parish Clerk (01454) 837271 / [austparishcouncil@gmail.com](mailto:austparishcouncil@gmail.com)



## Letting it Go for Nature

Q: What happens when somewhere which has always been just grass, has a spring cut in March, but is then left to grow for a couple of months?

A: Bee orchids and pyramidal orchids!

Residents may have noticed that some grassed areas around our villages have been left uncut for some time

now. It's part of a plan to support butterflies, bees and other insects and to help nature flourish. With this in mind, in Olveston Parish Council's Local Nature Action Plan, we have started to establish some meadow areas in the Vicarage Lane Playing Field and at the Old Down Sports Area.

We have started this with some gentle encouragement by seeding non-grass species. It may take some time for them to develop, but mostly we will be reducing grass cutting in these areas and letting nature get on with what it

## Beauty at the Barn

4, Grey Gables, Vicarage Lane, Olveston  
For appointments telephone Nicola on  
01454 201717



Jessica Manicures  
GEleration Nails  
Shellac Nails  
Jessica Pedicures  
Spray Tanning  
Waxing  
Ear Piercing  
Eyelash Perming  
Eyebrow Shaping  
Eyelash tinting  
And more....  
Evening appointments available  
Gift vouchers available



## Olveston & Tockington Tennis Club

*"Your local tennis club, next to Olveston Parish  
hall"*

**Make 2022 the year to get back  
on court.**

**Coaching for all ages.**

**Fabulous clubhouse with changing  
facilities, kitchen, TV and table tennis.**

**Call Martin 07720509653**

**Everyone welcome**



Tel: 07887 652358  
Jed's N.E.A.T. Services  
(Nose Everything About Technology)



**Technology brings us together and makes life easier. But.....**

**What should you buy?**

**How does it work?**

**And what if anything goes wrong?**

**Phones / laptops / tablets / TV's / Smart home systems. I can.....**

- Help you choose what's right for you
  - Teach you how it works
  - Fix existing 'tech' problems

**HOME VISITS – VIRTUAL REMOTE ASSISTANCE – PERSONAL SHOPPING**

**PRICING POLICY – Please pay me what you think is fair – SIMPLE ☺**

### ABOUT ME

Jed Williams – I'm 16 years old, live locally & have had my own business for over 3 years  
Email: [me@jedwilliams.co.uk](mailto:me@jedwilliams.co.uk) Website: [myneat.co.uk](http://myneat.co.uk) Tel: 07887 652358

does best. Which brings us back to bee and pyramidal orchids...the bee orchid, shown below on the right, was noticed in a grassed area that has been left to grow at the top of Orchard Rise. And the photograph of the pyramidal orchid (below left), was sent in by a resident who has left part of their lawn uncut for some time. Nature is amazing, surprising, and beautiful.



*Making Space for Wildlife is part of the Olveston Parish Council Biodiversity backed and funded initiative.*

## Olveston and Tockington WI

*Angela Green*

The WI has had a very successful first half of the year, with plenty of enthusiasm and numbers that are still increasing. We've had some excellent talks, starting with one from Steve Webb about being an MP and finishing, last month, with an enormously positive one from our local wildlife expert, Paul Godwin. Along the way we've learnt to make felt out of strands of wool (rather wet and messy, but it works like magic); we've been entertained with song and rhyme; we heard from Gill Leaper about the inspiring work being done in Malawi by her daughter Alice's charity, Butterfly Space; and we've solved a murder mystery. We've had a couple of trips out and held a tea party in one of Olveston's most beautiful gardens. So, if companionship, with varied entertainment, appeals to you, do come and try us out when we start up again in September.

Details will be in Meeting Point, or you can always ring me on 615222 for more information.





**Delivering the highest standards of homecare in South Gloucestershire for 14 years**

Inspected and rated  
**Outstanding** ☆

CareQuality Commission

good care guide  
★★★★★

Great British Care Awards  
2016 WINNER

Premier Homecare is the leading homecare provider in North Bristol and South Gloucestershire, having cared for over 2,000 families, ensuring they are safe, healthy and looked after

**Call today for help with a loved one**

**PREMIER HOME CARE**

**0117 959 2013**  
www.premier-homecare.com

- Short and long term home help
- Flexible hours
- Bespoke care support
- Highly trained and reliable carers
- Personal Care
- From cleaning to 24 hour Live-In care



**el cuisine**

Catering for any occasion  
Private parties, Birthday and Anniversary Celebrations,  
Weddings, Funerals, Corporate Events,  
Formal Dinners, Shoot Lunches... whatever the occasion

www.el-cuisine.co.uk Please contact Emma 07931952939 info @el-cuisine.co.uk



**Tockington Manor School and Nursery**  
for boys & girls aged 2 - 13

Discover our

- Family approach to education
- Envious Senior School entry
- Year 7 & 8 Pathway Programme
- Wrap-around care
- Small friendly classes
- Excellent facilities

Book your private tour at a time convenient to you  
01454 613229



## Olveston Parish Council

### Queen Alexandra Memorial Pavilion

There are big plans for the refurbishment of the Queen Alexandra Memorial Pavilion at Old Down. The architects have now produced definitive plans, and these will be exhibited in the Parish Hall on Wednesday 3rd August between 4pm and 8pm. The football club holds the lease of the building from the Parish Council and intends the redevelopment to be all inclusive and intend to provide meeting rooms for any organisation which might have such a need, better kitchen and bar facilities, as well as improved changing rooms. Part of the roadway will be altered close to the Bowls Club so as to meet highway regulations. This will entail the loss of perhaps 4 parking spaces but will enable 2 disabled spaces to be provided. Do please come along on the 3rd and meet the team and have your say in the proposals.

### Jubilee Business

We still have a few of the commemorative medals for the Queen's Platinum Jubilee left over. It was always the Council's intention to give a medal to everyone who took part, but in the event some people did not receive theirs. So please contact Martin Gibson on 07990970725 if you missed out.

The Jubilee Pudding Competition was won by Olveston resident, Barbara Maksymiw, with her 'Vanilla Jubilee Cheesecake with Red Berry Coulis'. We are hoping to catch up with Barbara soon and get her to share the recipe!

## Tockington Harvest Fayre 2022

*Maggie Spooner*

This year our annual Harvest Fayre will be held on Saturday 24<sup>th</sup> September at 2.00pm. As usual there will be delicious cream teas and home-made cakes, a children's fancy dress parade, performances from ROKH dance school, Junior Fascinating Rhythm (youth choir) and a display from Olveston Brownies. Stalls to browse and tempt you will include cakes, fresh garden produce, plants, books, 'As New' items. There will also be games and skill stalls for everyone, young and old!



Natalie Gladstone BSc(Hons) Ost  
**OSTEOPATH**  
 Back & neck pain, arthritic/ joint pain,  
 sports injuries, pre /post natal, whiplash,  
 cranial treatments, rehabilitation Pilates.

**Tel: 07870 219 249**

www.nataliegladstoneosteopath.co.uk

**OLD DOWN HILL, TOCKINGTON**

Easy parking. Day & evening appointments.  
 REGISTERED: EXPERIENCED: PROFESSIONAL



**Digger and Driver Available**  
 Out-Door Services

**A. D. D. PLANT**

Groundwork, Digging & Clearing  
 Turfing, Any outdoor work

**Tel: 01454 417372**  
**Mobile: 07866 407683**




The agent  
 for all seasons

keeping your garden  
 beautiful...

ask us about  
**LAZYLAWN**

- LazyLawn - superior artificial grass supply and installation - licensee for Bristol & South Wales
- landscape design and build with 25 years experience
- tree surgery
- garden makeovers
- regular garden maintenance

**Garretts Gardens and Landscapes**

for Garretts Gardens or Landscapes  
 t 01454 614111 m 07974 109919  
 info@garrettslandscapes.co.uk  
 www.garrettsgardens.co.uk

Come rain or shine,  
 lisa costa estate  
 agents have the  
 experience and  
 knowledge to take  
 you smoothly through  
 the moving process.

 **lisa costa**  
 RESIDENTIAL SALES & LETTINGS

53 High Street | Thornbury | BS35 2AR  
 01454 279734 | sales@lisacosta.co.uk | lisacosta.co.uk

Please note: If your property is currently on the market, the terms and conditions of your Existing agency agreement must be considered before instructing ourselves.

If you are having a sort-out over the summer months, we would be grateful for any good quality donations of new/unwanted presents, toiletries, plants, garden produce, jewellery, books and children's toys, games and soft toys. We are unable to accept any unwanted household items or 'bric a brac', so please take them to a local charity shop! Donations can be left in plastic bags outside the Wesley Room doors at any time, or contact Maggie Spooner on 610053 or Jane Sawyer, via email [jane@prologue.co.uk](mailto:jane@prologue.co.uk)



Olveston and Tockington Methodist Church relies on this event as a major source of funds for the upkeep of Tockington church building and Wesley Rooms, plus Olveston Church and hall. These continue to be used by a variety of different local community organisations.

*The photo shows a scene from the Fayre in 2018.*

We rely heavily on the generous offers of help that we receive to run this event, including preparing and setting up, running stalls, serving teas, washing up and packing up at the end of the day. Please contact Jane or Maggie if you are able to help in any way – we do appreciate it! There will be an update in the September edition of Meeting Point giving details of our competitions for children and the theme for the Fancy Dress parade.

## Sunbeams Toddler Group

Methodist Church Hall  
 1.30pm -3pm every Tuesday in term time. (We will be restarting on September 13<sup>th</sup>, after the summer break.)

All families with babies and toddlers are welcome, no need to book.  
 £2 per family includes drink and biscuits.

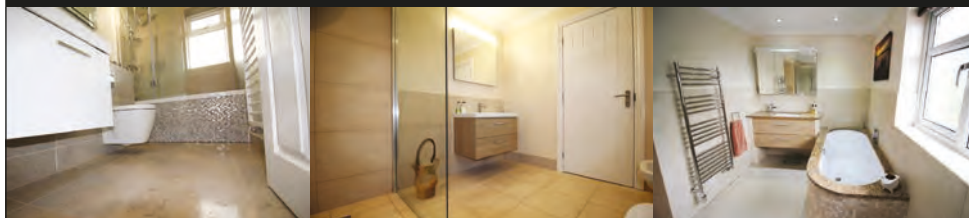
Further info on our Facebook page: *Sunbeams Toddler Group: Thornbury*



# Paul Whittaker

## BATHROOMS & WETROOMS

DESIGN . SUPPLY . INSTALLATION



Tel: 07879 666221 . Website: [www.paulwhittakerbathrooms.co.uk](http://www.paulwhittakerbathrooms.co.uk)

**Dunkley's**

Chartered Accountants  
30 YEAR ANNIVERSARY

**HELPING YOU**  
MAKE THE RIGHT SOFTWARE  
CHOICE FOR YOUR BUSINESS

TALK TO US ABOUT OUR CLOUD ACCOUNTING  
**SOFTWARE PACKAGES**

T: 01454 619900 E: [ADVICE@DUNKLEYS.ACCOUNTANTS](mailto:ADVICE@DUNKLEYS.ACCOUNTANTS)

WOODLANDS GRANGE, WOODLANDS LANE, BRADLEY STOKE, BS32 4JY

## Old Down Cricket Club

*Tony Gardner*

### 150 Club Winners July 2022:

£50 Bill Finch  
£15 Tony Williams  
£5 Stuart Bushell

### Latest £25 Bonus Ball Winners:

11/06/22 Simon Gould  
18/06/22 Roger Riggs  
25/06/22 Alex Grosvenor  
02/07/22 Simon Gould

### Upcoming Fixtures at The Park (13.00 Start):

30/07/22 1st XI v Chilcompton CC  
06/08/22 2nd XI v Bristol Malayee CC  
13/08/22 1st XI v Bath CC  
20/08/22 2nd XI v Abbots Leigh CC  
27/08/22 1st XI v Congresbury CC  
03/09/22 2nd XI v Frys CC

Up the Down!

## Severn Vale Flower Club

Our Members' Day with competitions was held on Monday 12<sup>th</sup> June at St Mary's Church Hall, Thornbury. This was our first Members' Day since the closure of the Armstrong Hall. We were not sure how it would all work out, considering it was a smaller hall and we were not sure many entries we would have for each competition. However, after members of our committee were coerced into putting in at least one arrangement each, we had seventy entries, including photographs. This proved to be an immense success with many positive comments.

Members judged the photos by putting a few coins against the ones they liked best with the money going to our chosen charity. Kathleen Taylor judged the competitions which she found challenging as there were so many entries to choose from. Margaret Orchard won the Kay Evans trophy. Sue Williams won the Carmen Pitts award. Susie Rees won the Nancy Robbins award and the Kathleen Hawkins award. Christine. Mullins won the award for a flower in a



**Legal advice that brings balance to life**

Award winning legal advice to help you navigate change and plan for the future.

**gl LAW**

**Let's talk about you or your business** [www.gl.law](http://www.gl.law) 0117 906 9400

BUSINESS SERVICES · PROPERTY · DISPUTES · FAMILY LAW · WILLS & PROBATE

- All makes servicing and repairs
- Petrol and Diesel MOT Testing
- Tyres, Exhausts and Batteries
- Air Conditioning
- Latest Bosch On-Board Diagnostics
- Vehicle Sales



**GREEN LANE GARAGE**  
OLVESTON

New Road, Olveston, BS35 4DX  
**01454 202030**





vase, which was a lovely crimson clematis. Members had a chance to look at the entries before enjoying nibbles and a cake, kindly made by June Lyons.

On Monday afternoon 11<sup>th</sup> July at Eastwood Park, we had an afternoon tea with a small demonstration for members and friends. If you are interested in coming to any of our afternoon demonstrations the next one is on Monday afternoon August 8<sup>th</sup> when Margaret Heal will be our demonstrator. On Monday September 12<sup>th</sup> Liz Gordon will be the demonstrator.

For more information, the numbers to ring are 01453 811089 or 01454 885213.

## Thornbury Area Youth Music

### Open Morning

**Saturday 10th September 9.30am to 11.30am**

**Manorbrook School, Thornbury, BS35 1JU**

Thornbury Area Youth Music (TAYM) is a charity run by parents for children who want to learn a musical instrument in a fun and supportive environment. TAYM runs term-time Saturday morning music classes at Manorbrook School, Thornbury. There are instrumental groups, classes, choir, theory and orchestras for musicians of all abilities aged four and above. TAYM is a charity (Reg. no: 1075032). Our classes are affordable. Instruments can be hired for a small fee.

Come along to our Open Morning to find out about our classes and orchestras. Your child can try a variety of instruments: cello, clarinet, trombone, saxophone, violin, cornet, trumpet and more! If your child already plays an instrument, they are welcome to join TAYM classes.

For more information contact:

[info@thornbury-music.org](mailto:info@thornbury-music.org) or [www.thornbury-music.org](http://www.thornbury-music.org)

## Thornbury Choral Society

It was with a mixture of excitement and apprehension that Thornbury Choral Society gathered on stage at the Castle School on May14th, for their first public performance since the beginning of the pandemic. Would we be up to the challenge? Would there be an audience?

In the event, all our fears were groundless. Under the leadership of our conductor, Steven Kings, the choir sang with great enthusiasm, and we had



**gsharchitects**



## FREE CONSULTATION

For further information please contact us on:

info@gsharchitects.co.uk  
www.gsharchitects.co.uk  
Almondsbury, Bristol

07780 000220

Build without planning permission

Quality design service from  
concept to completion

Planning, construction drawings and  
contract administration service  
tailored to suit you

Domestic, Commercial,  
and Sustainable Architecture.

Experienced working with  
Listed Buildings

Build your dream home in your  
garden

Development Advice and Appraisal

3D Visualisation Services

**RIBA**

## New Passage Cat Kennels

**Large Runs ~ Heated Chalets  
Licensed Cattery  
in Pilning**

**Tel: 01454 632 456  
www.catkennels.co.uk**



**Design & Planning**

Home Extensions - Change of Use - Floor Plans  
Full Planning & Building Regs drawing service  
Almondsbury based with successful local projects

contact Julian Lowther for friendly professional advice

t:0117 2591059 julian@jfl-planning.co.uk  
m:0789 0179546 www.jfl-planning.co.uk

## G.V.R PITCHER & SONS

**The Yard  
Haw lane  
Olveston  
Bristol**



**TEL: 01454 619299  
MOB: 07989 208964**

**Property Care & Improvements**

an audience of nearly a 100. It was so good to be involved in live music making again!

However, like many organisations our numbers have diminished since 2019 so we are actively recruiting new singers in all four voice parts. Maybe you sang at school or at university, or you are new to the area and want to meet new people. The Choral Society could be just the place for you. Just come along and see what we do. We do not hold auditions.

We meet on a Monday evening at 8.00pm in the United Reform Church. We perform two concerts a year, and our next concert will be in November when we have a really interesting programme. We shall be singing Karl Jenkins' The Armed Man and Misa Criolla by Ariel Ramirez.

We restart the autumn term on Monday September 5th with the AGM starting at 7.30pm and the following week on the 12th September we have a Welcome Meeting, with light refreshments starting at 7.30pm, followed by our rehearsal at 8.00pm.

Do come along to meet us, we would be delighted to see you.

FFI: [www.thornburychoralsociety.org.uk](http://www.thornburychoralsociety.org.uk)

Contact: Ruth Piolle 01454416518

## August at Thornbury Library

### Gadgeteers

There is still time to join up for this year's Summer Reading Challenge. It will continue until 10th September for all primary age children. Read six books over the holidays and earn yourself a medal.

### Look out for wonderful craft activities to drop in to throughout the holidays

Wednesday 10th August 10.30-12 Space Explorer Crafts

Wednesday 17th August 10.30-12 Summer Fair Side Show Crafts

Wednesday 24th August 10.30-12 Junk Box Challenge Crafting

### Community Learning

Your community learning development worker Aimee Hilbourne will be at Thornbury Library on Wednesday 3rd August from 9.30-11.30am to share information on a wide range of courses for Wellbeing, Employability, English, Maths, ESOL and IT offered by South Gloucestershire Council.

Or alternately you can find further information at:

[www.southglos.gov.uk/communitylearning](http://www.southglos.gov.uk/communitylearning)

FFI: email [thornbury.library@southglos.gov.uk](mailto:thornbury.library@southglos.gov.uk) or tel: 01454 868006

**CAR - VAN - MINIBUS**

**SELF DRIVE - LOW-COST - SHORT/LONG TERM  
WIDE VEHICLE SELECTION - CONTRACT HIRE**

- Fully Comprehensive Insurance
- Extra-Low Off Peak Rates
- No Hidden Charges
- Breakdown Cover
- Cars
- Minibuses
- Transits
- Sprinters
- Lutons & Tail Lifts

**THORNBURY**  
SELF DRIVE HIRE

Established Over 20 Years

www.tsdhire.co.uk  
Mob: 07768 232424  
Email: info@tsdhire.co.uk

**01454 414111**

COOPER ROAD, THORNBURY IND. EST., THORNBURY, BRISTOL BS35 3UP

**THORNBURY AUTOBODIES**

**Car & Commercial Body Repairs**

- Crash Repair • Re-Sprays • Dent Repair
- Spray Booth Facilities • Full Body Jigging • Recovery
- Top Standard Of Work
- Fully Insured
- Insurance & Private Work

Courtesy Vehicles • Free Estimates • Over 25 Years Experience

**THORNBURY**  
**01454 419985**

Email: thornburyautobodies.ps@gmail.com www.thornburyautobodies.co.uk  
Cooper Road, Thornbury Industrial Estate, BS35 3UP

**WJC**

**Plumbing & Tiling**

Bathroom & Wet Room Design & Installations

Tiling • General Plumbing

Kitchen Installation • Plastering

**Billy Cook**  
WJC Plumbing & Tiling

07748 085 920  
wjclumbing@outlook.com

## Summer Holidays Wordsearch

I C I N C I P E A M  
N G A M E S N U O A  
I B V C M I W V W E  
K D E L H C A E B R  
I E S S E F S G Y C  
B K N R S T P C R E  
F U N H J Q S X Y C  
S W I M M I N G P I

There are 9 words associated with summer holidays hidden in this wordsearch. They are things you might see, do, visit, wear or enjoy. 8 of them are nice things.....and one definitely isn't! Words go left to right, right to left, up and down and diagonally. Good luck!

**XL Plumbing & Heating Solutions Ltd**

- General Plumbing
- Boiler Installation, Servicing & Maintenance
- Gas Safety Certificates
- Bathroom Installation & Tiling

Contact Mark Mob: 07738 726803  
Email: xlplumbing@hotmail.co.uk  
Tel: 01454 549008  
Web: www.xlplumbing.co.uk

**safe**  
REGISTERED





**GARDEN MACHINERY SPECIALISTS**  
**SALES, SERVICE AND SPARES**

E-MAIL: [themowerdoctor@hotmail.co.uk](mailto:themowerdoctor@hotmail.co.uk) WEBSITE: [www.themowerdoctor.net](http://www.themowerdoctor.net)  
ADDRESS: Unit 2-3 The Rearing Unit, Oldbury Lane, Oldbury-On Severn, BS35 1RF  
TELEPHONE: 01454 411 701







DEALERS FOR:








**PHYSIOTHERAPY**  
**CHIROPRACTIC**  
**PODIATRY**  
**CHIROPODY**

"Optimise your Health"

Please Enquire:

Tel: 01454 528608  
Email: [info@optimuscp.com](mailto:info@optimuscp.com)  
Web: [optimuscp.com](http://optimuscp.com)

11 The Plain, Thornbury, BS35 2AG

**OLDOWN**  
TREE SURGEONS

TREE SURGERY AND HEDGE MAINTENANCE

PROFESSIONAL. QUALIFIED. FULLY INSURED.

[www.oldowntrees.org](http://www.oldowntrees.org)

Antony Leicester 07800512408 [info@oldowntrees.org](mailto:info@oldowntrees.org)



**Computer support and solutions for the home and business user.**

- PC/laptop repairs
- Virus removal
- Wifi/broadband issues
- Sponsors of Olveston FC

How can we help? Tel: 01454 281 500 Web: [www.eccomputers.co.uk](http://www.eccomputers.co.uk)

IT Support/Repairs Office Equipment Print Solutions Telecoms Cyber Security Managed Services Software/Database applications

## Savoury Courgette Cake

This recipe first appeared in Meeting Point back in the summer of 2017, in one of Chris Bolton's 'Veggie Matters' articles. It is worth a repeat this month as courgettes are exploding into life in veg gardens and allotments all over the place - and it is always a good idea to have recipes to help with a glut!



### Recipe

Take 2 courgettes and slice them thinly, then fry them with a little olive oil (10 to 15 mins). Dry them with kitchen paper. Mix 150gm plain flour, 2 teaspoons of baking powder and 3 eggs, and then add 1fl.oz of sunflower oil, and 4fl oz. of warm milk. Mix well, then add 200gms of grated gruyere. Check the seasoning and then add the courgettes to the mix.

To this mixture you can also, if you wish, add a handful of chopped bacon, a chopped onion, a few chopped black olives, a red pepper, or any other combination that you like! (Cook these ingredients with the courgettes).

Mix well, turn into a greased loaf tin and cook in a preheated oven at 200°C for 30-40 mins until golden.

Then enjoy with salad or as a nibble with a glass of chilled white wine, as the French do!

# YOUR PC GURU

COMPUTING FOR 'MERE' MORTALS

01454 616365

- Home visits
- Computer Repair
- Phone & Tablet setup
- Home Wireless & Broadband
- Smart Home Tech
- Complete Mac support

[www.yourpcguru.co.uk](http://www.yourpcguru.co.uk)  
Technology Advice & Repairs

## JC 4x4 Ltd SPECIALIST IN LANDROVER

SERVICE • REPAIR WORK • DIAGNOSTICS • MOTS • OTHER VEHICLES WELCOME

CALL JAMES: 01454 261067 / 07966 086447



07307 727244

### Free Quotes

Domestic	Radiant heating
Commercial	Boilers
Breakdowns/ call outs	Radiators
Servicing	Plumbing
Installations	
Warm air heating	LPG, natural gas, oil



[www.edgeheatingandplumbing.com](http://www.edgeheatingandplumbing.com) [info@edgeheatingandplumbing.com](mailto:info@edgeheatingandplumbing.com)

## Thornbury Memory Café

The café has now been successfully running for over 10 years and continues to be open on the second and fourth Tuesday of each month (NB: except in August) from 10.15am until 11.45 am. The venue is the Methodist Church Hall, just behind the Church on the High Street, Thornbury. Parking is very easy - just outside for Blue Badge holders, or in the nearby car park.

We have many regular visitors who come every fortnight, but we also have many newcomers who rapidly become regulars. Visitors with memory problems should come along with their carers, such as husbands, wives or others. New visitors will be made very welcome, so come along and give it a try. We are not a clinic, but we find that carers also benefit from the chance to chat to others in similar situations.

The setting is a normal café style, with our volunteers serving coffee, tea, soft drinks, biscuits and fruit, for which there is no charge, although we do have a voluntary contribution box. There is a lot of chatter and constant exchange of thoughts and ideas, and there is either entertainment or a visit from a speaker on a topical matter of interest.

Contact Sue Rowley on 01454 412941 or Louise Wright on 01454 260371 for further information, or just turn up, and we are sure you will enjoy the experience and the fun.

## OLVESTON PARISH TWINNING ASSOCIATION



Olveston Parish Twinning Association (OPTA) has been active for over 25 years. The basic arrangement of twinning visits to and from our friends in the Breton village of Bréhan continued smoothly until the interruption of the pandemic and restrictions on travel. The OPTA committee ran fund-raising events which, over the years, raised the necessary resources to host our French visitors and – at the same time – provided enjoyable evenings for local people.

Times change, however, and now we find ourselves in urgent need of a new committee to run OPTA if the twinning going to survive into the future. The existing committee members have, between them, served many years and for





# Dave Webb

Painter - Decorator

07809 869149

01454 201640

*Reliable, professional, friendly service.  
Please ask for your free quotation*



## Squire Sweep

A chimney sweep service from  
Michael Squire

Tel: 07504 253 467

Email: [squiresweep@gmail.com](mailto:squiresweep@gmail.com)

Visit: [www.squiresweep.co.uk](http://www.squiresweep.co.uk)

## MEDWAY DESIGNS Sewing & Alterations

- Bridal Wear •Alterations
- Evening Wear •Day Wear
- Soft Furnishings & re-upholstery

Ask about sewing lessons

Delivery & Collection Service Available

**Lois Coulson**  
0117 969 1798 /  
07950 396064

[loiscoulson@ymail.com](mailto:loiscoulson@ymail.com)

14 Watch Elm Close, Bradley Stoke

Call now for a friendly personal service

## Cookin' On Gas Ltd



Repairs & Sales of all  
domestic appliances:



Gas & Electric Cookers and Hobs  
Washing Machines, Dishwashers  
Tumble Dryers

[www.cookinongas.co.uk](http://www.cookinongas.co.uk)  
[enquires@cookinongasltd.co.uk](mailto:enquires@cookinongasltd.co.uk)

Matt Cole  
1 Olive Gardens Tel 01454 851545  
Alveston Mob 07715 705670

a variety of reasons such as age, health, or other commitments, will be standing down.

If you would be interested in finding out more about OPTA and what might be involved, please make contact via the editor of Meeting Point. (See page one for contact details.)

## Yours Faithfully

Revd. Neil Mobbs  
Oasis Church

How do we start and finish our day?

I find in Psalm 92, verses 1 and 2, the words "It is good to give thanks to the Lord ...to declare your loving kindness in the morning and your faithfulness at night" So what is our first thought as we wake up? Our God is loving and kind in His relationship with us. These qualities are part of His character. In the evening as we go to bed possibly reviewing the day, we consider his faithfulness, His loyalty to us.

The Psalm speaks a lot about His deeds or works in our lives. Material blessings, spiritual blessings, are given to us by God. So, as we begin and end our day, do we recall who He is and has done for us? R.T.Kendall, a famous minister and bible teacher, speaks of how he ends his day by giving thanks to God for three things that have occurred in the day, evidence of His love, kindness and faithfulness.

We are encouraged by Paul in his letters, in the New Testament, to be thankful as an attitude. If we are thankful or grateful to God on a daily basis, it affects our relationship with people, so we appreciate one another for what they mean to us or do for us. It has been stated by the Mayo Clinic in America, through a survey, that people who are appreciative or grateful, live longer! May we have an attitude of gratitude. God bless you!



MEMORIALS &  
MONUMENTS



Supplied & Erected  
NEIL VIZARD  
01454 419108

**BAMFIELD**  
TREE SERVICES  
TREE SURGERY AND LOGS



www.bamfieldtreeservices.co.uk  
07761 810483

**prestige**  
event equipment hire

Supplying you with the best equipment to succeed!  
CELEBRATIONS & CORPORATE EVENTS

CUTLERY, CHINA, GLASSWARE, LINEN, REFRIGERATION,  
COOKING EQUIPMENT, BARBEQUES, FURNITURE & MORE

Fast and Efficient, we stock a wide variety of  
equipment covering anything from  
WEDDINGS to FESTIVALS.

For a FREE quote please call: 01179613170  
info@prestigecateringhire.co.uk  
www.prestigecatering.co.uk

**HK** **Harkell**  
**Building services**

- MAINTENANCE
- BRICKWORK
- ROOFING
- FENCING
- REPAIRS
- PLASTERING
- CARPENTRY
- PATIO ETC

FOR A FREE QUOTATION PLEASE CALL  
TEL: 01454 617110 MOBILE: 0787 6682546

**Window Cleaning**

07976 694744 - 0117 9085794



**M. Gray Window Cleaning**

Family run business for over 25 years  
experience working in the Almondsbury,  
Olveston, Aust areas - and nearby.

Email: mgwc1@hotmail.com

## Church News

### ST MARY THE VIRGIN, OLVESTON

Aug 7	10am 6pm	Holy Communion Evensong	Rev David Bone Paul Harrod
Aug 14	10am 6pm	Morning Prayer Holy Communion	Janet McBride Rev David Moss
Aug 21	10am 6pm	Morning Prayer and Baptism Holy Communion	Rev Moss and Janet McBride Rev David Moss
Aug 28	10am 6pm	Holy Communion Evensong	Rev Anne Lloyd Janet McBride

Every Wednesday, Holy Communion, 10am, usually with Rev Ann Lloyd  
Church Fete, Monday 29 August 2pm.

**Contact:** Rev David Moss, 01454 415190 mossds@gmail.com

### CHAPELRY OF ST JOHN, AUST

Aug 14	10am	Morning Prayer	Trevor Cook
Aug 28	10am	Holy Communion	Rev David Bone

**Contact:** Trevor Cook, 01454 618442

Church Wardens: Jenn Dickens 632312 and Clive Roberts 632238

### ST MARY DE MALMESBURY, LITTLETON-ON-SEVERN

Aug 14	9am	Morning Prayer	Tracey Black
Aug 28	9am	Holy Communion	Rev David Moss

**Contacts:** Tracey Black 417660 and Tim Pyper 416422 /07802 419451

### ST JOHN THE EVANGELIST, ELBERTON

Aug 14	9am	Morning Prayer	Judith Heybyrne
Aug 28	9am	Holy Communion	Judith Heybyrne

**Contacts:** Judith Heybyrne 616725 and John Gunnery 413225



**greenside**  
Landscaping

The Cottage, Hortham Lane,  
Almondsbury, Bristol BS32 4JP

Greenside Landscaping can offer a wide range of services including:

**Artificial Grass ~ Brick & Block Driveways  
Decking ~ Fencing & Gates  
Garden Design ~ Patios & Paths  
Planting ~ Ponds & Water Features  
Turfing & Seeding ~ Walling**

*We pride ourselves on flexibility and we strive to meet our client's requirements and budgets.*

www.greenside-landscaping.co.uk  
Tel: 01454 250648 Mob: 07980 384321  
Email: paulbradburn@hotmail.com

**MORAS**  
Decorating Services

**ANDREW MORAS**  
Quality Painting and Decorating Services

For your **FREE** no obligation quote contact Andrew:

**07962069036**

✉ andrew@morasdecorating.co.uk  
www.morasdecorating.co.uk

**Tavira**  
Algarve, Portugal  
3 Bed Apartment  
"can accommodate up to 8 people"

Modern 3-bedroom apartment in picturesque & historic Algarve town. 2-bathrooms including one en-suite, 2-balconies & roof terrace. Fully furnished, sleeps 6-8. Easy walking to thriving town centre. Close to railway station, golf courses & beaches. 30 minutes drive from Faro. Ideal for families or golfers. Tel: 07889 727729 Email: anthonyar@aol.com - www.aminpadtavira.co.uk

TAVIRA - EAST ALGARVE  
EASYJET & RYANAIR  
NOW FLYING TO FARO  
FROM BRISTOL

**BEDLAM**  
www.bedlambeds.com

- Free local delivery
- Free assembly
- Free disposal of your bed

Divans / Mattresses / Ottoman & Wall beds /  
Memory foam & latex mattresses / Beds made  
to measure / Pine, Metal & leather beds

**Open Tuesday to Friday: 9am-5pm  
Saturday: 10am-3pm**

**Visit our showroom:** The Old Post Office  
26a Gloucester Road, Rudgeway, Bristol,  
BS35 3RY (by the speed camera)

**01454 617 277 or 07887 853479**

**Thornbury Stairlifts**  
SALES SERVICING & REPAIRS

• New & Re-conditioned Stairlifts & Warranty  
• Removals & Relocations  
• Free Surveys & Quotes – No Obligation  
• Rentals for Straight Stairs

Independent, Professional & Friendly Advice  
Over 24 years practical experience

**Independent Stairlift Specialist**  
**01454 413748 07833 318722**  
www.thornburystairlifts.co.uk

## OLVESTON AND TOCKINGTON METHODIST CHURCH

Aug 7	10.30am	St..Andrews Church, Filton	Morning Worship led by Rev Simon Edwards
Aug 14	10am	Olv Ch	Morning Worship with Communion led by Rev Simon Edwards
Aug 21	11am	Thornbury Methodist Ch	Morning Worship led by Rev Simon Edwards
Aug 28	10am	Olv Ch	Morning Worship led by Mrs Rosalie Doyle

**Contact:** Rev Dr Simon Edwards 418176,  
simon.edwards@methodist.org.uk

**THE VINE House of Prayer, Pilning Street, Awkley BS35 4HL**  
Meeting at 11am every Sunday and on the 1st and 3<sup>rd</sup> Wednesdays of each month at 2.30pm.

**Contact:** Mike and Barbara Matthews 07512 917229  
thevine\_awkley@hotmail.com

## THE OASIS CHURCH, OLD DOWN

Services at 6.30pm every Sunday. All are welcome.

**Contact:** Neil Mobbs cnmobbs@hotmail.com

## AUST EVANGELICAL and LITTLETON EVANGELICAL CHURCHES

**Contact:** Danny Bamfield 01454 419324 danny@thebamfields.co.uk

**HOLIDAY LET 6 BERTH HOLIDAY HOME**  
(2 Bed, 1 Ensuite)

**LADRAM BAY**  
OTTERTON . BUDLEIGH SALTERTON . EX9 7BX

Central Heating . Double-Glazed  
Private Beach. Fishing Trips . Cliff Walks  
Restaurant . Bar . Live Entertainment  
Indoor Pool . Kids Club  
Shop . Cafe . Takeaway

**Tony Gardner**  
07889 727 729

**RC CHURCH OF CHRIST THE KING**, Thornbury  
 Mass on Sundays at 9.30 and 10.30am  
**Contact:** 01454 412223 [www.ctk-thornbury.org.uk](http://www.ctk-thornbury.org.uk)

**SOCIETY OF FRIENDS (QUAKERS)**, Thornbury  
**Contact:** Brian Hawkins [hawkinsb863@gmail.com](mailto:hawkinsb863@gmail.com) 01454 854867

## Diary Dates for August

1 Monday	Thornbury Art Club Exhibition until 7th		TMH
2 Tuesday	Thornbury Macular and Low Vision Group Over 60's coffee morning, every Tuesday	10.30-12.30 10-12	TMH DGCL
3 Wednesday	Table Tennis every Wednesday	7pm	OPH
4 Thursday	Thornbury Farmers' Market Coffee Shop	9-1 10-12	S+M
5 Friday	Over 60's Bingo or Quiz, every Friday	2-4	DGCL
6 Saturday	Litter Pick, 612850	1pm	OPH
8 Monday	Severnvale Flower Club	2pm	SMCH
9 Tuesday	Over 60's coffee morning Thornbury Memory Café	10-12 10.15-11.45	DGCL TMH
11 Thursday	Coffee Shop	10-12	S+M
12 Friday	Over 60's Bingo or Quiz	2-4	DGCL
13 Saturday	Thornbury Horticulture Show, Turnberries	2pm	
15 Monday			
16 Tuesday	Over 60's coffee morning	10-12	DGCL
18 Thursday	Thornbury Farmers' Market Coffee Shop	9 - 1 10-12	S+M
19 Friday	Over 60's Bingo or Quiz	2-4	DGCL

22 Monday	Severnvale Flower Club, Practice Class	2pm	SMCH
23 Tuesday	Over 60's coffee morning, every Tuesday  Thornbury Memory Café  Olveston Parish Council	10-12  10.15-11.45 7.30	DGCL  TMH OPH
25 Thurs	Coffee Shop	10-12	S+M
27 Sat			
28 Sunday	Charity Garden Party, The Swan, Thornb'y	3pm	
29 Monday	Church Fete, Church Hill, Olveston	2-5	

KEY: **AMH** - Alveston Methodist Hall, **DGCL** - Daldry Gardens Community Lounge, **EVH** - Elberton Village Hall, **OPH** - Olveston Parish Hall, **S+M** - St Mary's Church, Olveston, **SMCH** - St Mary Church Hall Thornbury, **TMH** - Thornbury Methodist Church Hall

### Looking Ahead to September

Saturday 3rd, Quiz Night at St Mary's Church, Olveston, 7.30

Saturday 17<sup>th</sup>, Bristol Sinfonietta at St Mary's Church, Olveston, 7.30



**Contact details** for any clubs or organisations in the Meeting Point area can be found in the Meeting Point Directory on the community website: [www.olvestonandaust.com](http://www.olvestonandaust.com). If you would like to update your organisation's details, please email: [meetingpointsecretary@olvestonandaust.com](mailto:meetingpointsecretary@olvestonandaust.com)

**Advertisements** Neither Meeting Point, its editor, nor management committee accept any responsibility or give any guarantee in case of any dispute or claim as to quality, condition or delivery of commodities or services advertised in this magazine. It is not to be taken that publication implies recommendation. It is always advisable to check prices when ordering goods or services.

**Views** expressed by contributors are not necessarily those of the editor or Meeting Point magazine  
**Copyright Meeting Point 2022.** Copyright remains with the author(s) and Meeting Point. No part of this publication may be reproduced or transmitted in any form without the prior permission of the copyright owners.

Meeting Point is printed by Motion Printing Ltd.





## OLVESTON STORES & POST OFFICE

NOW STOCKING - JON THORNER'S FULL RANGE

NEW COSTA EXPRESS MACHINE IN STORE

HOME DELIVERIES (NO MINIMUM SPEND)

NEWSPAPERS DELIVERED (SMALL CHARGE)

PAYZONE FACILITY FOR BILL PAYMENTS, GAS, AND ELECTRIC TOP UPS

OUR INSTORE POST OFFICE OFFERS A WIDE RANGE OF SERVICES

CAR TAX  
BILL PAYMENTS  
CURRENCY ORDERS  
POSTAGE  
A RANGE OF INSURANCES  
&  
MUCH MORE

01454 612269

[olvestonstores@btconnect.com](mailto:olvestonstores@btconnect.com)

## BONDS *of* THORNBURY

INDEPENDENT ESTATE AGENTS



A truly local independent estate agency with over 40 years of experience and with unrivalled knowledge of the property market within Thornbury and South Gloucestershire.  
Our caring sales business is based on our reputation, honesty and integrity.

Please contact: Rowena Moncrieff  
for further details...

14 The Plain, Thornbury  
Tel No: 01454 858007

[www.bondsofthornbury.co.uk](http://www.bondsofthornbury.co.uk)  
[enquiries@bondsofthornbury.co.uk](mailto:enquiries@bondsofthornbury.co.uk)

