

Meeting Point

Volume 32, Number 6, March 2008

The community magazine for the villages of Olveston, Tockington, Old Down, Lower Hazel, Awkley, Ingst, Aust, Elberton and Littleton upon Severn

EDITOR:

Sue Hunter

Hazeldown,
Hazel Lane
Old Down
Tockington
Bristol BS32 4PL
Tel: 01454 412191

meetingpointeditor@gmail.com

ASSISTANT EDITOR:

Carol Norman-Vincenot

The Stocks
Main Road
Aust
Bristol BS35 4AX
Tel: 01454 631814

meetingpointmagazine@gmail.com

ADVERTISING:

Nigel Dawes

Cromwell House
The Street,
Olveston
Bristol BS35 4DR
Tel: 01454 201558

Publication date

1st of each month

**Material for April 2008 to
Editor or Deputy Editor by
12th March**

From the Editor

In the Church's Year, we celebrated the very end of the Christmas season with Candlemas on 3rd February and three days later we had Ash Wednesday and the beginning of Lent, so, in this issue, I can already wish you a Happy Easter on 23rd March! You can greet Easter Day in the open air at 6.30am in Olveston and at 8.00am in Tockington and of course there are Easter services elsewhere too.

Continuing the Village Garden theme, there is an article by Isobel Anderson on her own garden and Pat Poole has written to explain what is going on in the field next to Vicarage Lane - making a dream come true.

Recycling is another theme running through this issue. I am glad to report that the fact a third of food is thrown away in the UK does NOT apply to the over sixties who were raised in more stringent times. However I am going to think hard about buying bottled water in future which apparently takes 15 litres of water and a litre of oil to produce – so it's tap water for me in future.

Our cover is by Neil Cairncross.

Meeting Point Founded in 1976 by the Anglican and Methodist churches in Olveston, near Bristol

Village Person- Paul Mcquaid

Cycle Challenge of a Lifetime (Part Two)

Carol Norman-Vincenot

I don't think any amount of training for this kind of challenge can prepare one for the wrath of the British weather and Paul remembers one incident when he came back from a trial run and could hardly move and literally had to fall off the bike to get off it! High winds proved to be difficult to tackle and even with the 'de rigueur' lycra shorts the guys would still suffer rubbed knees, sun burn and sore backs. September was chosen as a month that would perhaps be kind in terms of the elements being neither too hot nor too cold, or so they thought.



The day of the ride dawned and another neighbour and good friend, Chris Bradley, very kindly drove them to John o' Groats to start the ride. Land's End is the extreme southwestward point of Great Britain, situated at the end of the Penwith Peninsula. John o' Groats is the traditionally acknowledged extreme northern point of Scotland, in northeastern Caithness. The distance from end to end is around 875 miles (1400 km).

The ride plan entailed staying in Youth Hostels 'en route' and this is what they did. Youth Hostels conjure up visions of uninspiring places to stay but this couldn't be further from the truth. The directory of Hostels across the United Kingdom is amazing; anything from scout huts and log cabins to haunted castles and stately homes! Some were really in the middle of nowhere and unstaffed, so you are in charge of feeding yourself. At the other end of the scale, the guys stayed in Carbisdale Castle, Sutherland, in the Scottish Highlands, a wonderful stately home on the shores of Loch Lomond.

The trip threw many interesting experiences and twists their way. On one occasion, having arrived at one of the best restaurants in Scotland, Duck Bay Hotel, Paul rang ahead to check with the Maître d' to see if their cycling attire would be suitable in an otherwise very formal dining room, as obviously due to limited space their wardrobe was pretty limited! The owner told them that they would be most welcome and on arrival Paul and Mark were shown to the best table in the house! They well remember attaching their bicycles to the railings next to all the Porsches and TVRs in the car park! Amongst the highs came the inevitable low points and one particular occasion Mark's bike snapped in two! Luckily for him his luggage tied to the back saved the day and he suffered no serious injury but this could have been very dangerous. After calling HQ (aka Sarah, Paul's wife, and her boss) they were able to track down a shop that very kindly lent him a bike on which to finish the ride and also sent the damaged bike home.

With regards to the charity that Paul and Mark chose, they wanted to pick something local and one that was small enough to make a real difference. This came in the form of the Jesse May Trust. The staff here were amazing, very supportive and extremely interested, so much so that they managed to get all the local media involved which was fantastic. The Jesse May Trust (www.jessiemaytrust.org.uk) in Bristol provides nursing care to terminally ill children. It really is heart warming to hear of the many sponsors that gave to the cause, including several local firms as well people they met 'en route' and even a chap in the hairdressers who overheard a conversation regarding the ride and pledged £20 on the spot! A final total of just short of £2,500 was very gratefully received, a superb achievement.

They met many inspiring and interesting people on their trip, from a group of school friends in their 70s who had done the trip as youngsters and were reliving the route in a more sedate fashion to a chap panning for gold in Scotland. There are so many more tales to tell.

Paul and Mark couldn't possibly have done the trip alone; they needed each other's expertise and encouragement when the going got tough and it inevitably did on several occasions but I get the impression that perhaps another trip could be in the offing sometime in the not too distant future!

Craft Fayre for Jessie May Trust

Saturday March 8th 10 - 4pm

In Almondsbury Old School Hall. £1 adult, children free

Jackie Shipley

We are having a Craft Fayre in aid of The Jessie May Trust. This will be the second attempt!!! The first was in December - it was a wash-out... The heavens opened all day. I'm hoping - second time lucky. The reason for the Craft Fayre is two-fold:-

Firstly, I think it will be a fun few hours for everyone, traders and public alike. We have Mother's Day coming soon, so a perfect opportunity to browse and hopefully purchase something a little different.

Secondly, it will support The Jessie May Trust which is a charity. Its carers are all medically trained to go into homes of children with life threatening diseases. It allows parents to have some precious quality time with other children in the family.

I had much needed and appreciated help from the Care Team with my son's palliative care. The Jessie May Trust made it possible for me to take my daughter to Brownies, gym etc.. I could do this knowing my son was in safe hands, in his own surroundings, what a relief! So, this is my way of saying THANK YOU to the Trust.

Please do come along, and help support these fantastic people; they really are a life-line. One of the Traders to enjoy on the day is **Small print** who create original pieces of silver jewellery with your child's fingerprint on it. Choose from a selection of cufflinks, charms or necklaces. A perfect gift idea for Mother's Day. There will also be **Phoenix cards, Virgin Vie, Homemade Jams. Handbags 4 u, Fairtrade bags and bowls, Nicky Webb Holistic Insights, Handmade knit wear. Children's Toys, HEAVENLY CHOCOLATE FOUNTAIN, and much more.**

Of course you could come along just to have a cup of tea/coffee and do our much loved activity - people watching!! Hope to see you there.

WI January Meeting

Joyce Davies

The New Year Meeting was well attended. The Institute's 90th Birthday will be celebrated in late June – when strawberries and gardens are at their best. It will be held in the lovely garden of Mrs Carmen Pitts.

The EGM will be held at the Winter Gardens, Weston super Mare on Wednesday March 26th. Names were taken of those wishing to attend the EGM and also the Know Your Cities visit to Birmingham. The resolutions for the London Annual General Meeting were discussed and selected.

Mr Eric Garrett opened his talk with a view of Olveston from Google. He then came down to earth and took us on a fascinating walk around the village illustrated with early photographs and more up to date ones of the buildings of interest.

On March 11th the speaker will be Mrs Aitkin of Thornbury Garden Shop – her subject will be 'Spring Gardens'. Visitors are always welcome.



A CHARITY BRIDGE DRIVE will be held at

The Almondsbury Old School Hall

on Thurs Mar. 27th 2008, starting 7.30 pm prompt

£7 INCLUDING REFRESHMENTS

Numbers limited

CONTACT RICHARD HARROP (01454) 416927

e-mail exall@thedown99.freeserve.co.uk

The following was passed to me from our local Parish Council's Newsletter. Some of you may have read it before but it's worth it for the chuckle it brings in this wet winter – Ed.

Thought for the Month



Noah weeping in his yard, but no Ark. 'Noah!' He roared, 'I'm about to start the rain! Where is the Ark?'

'Forgive me, Lord' begged Noah 'but things have changed. I needed Building Regulations approval. I've been arguing with the Fire Brigade about the need for a sprinkler system. My neighbours claim that I should have obtained planning permission for building the Ark in my garden because it is development of the site even though in my view it is a temporary structure. We have to go to the Secretary of State for a decision. Then the Department of Transport demanded a bond be posted for the future costs of moving power lines and other overhead obstructions, to clear the passage for the Ark's move to the sea. I told them that the sea would be coming to us, but they would hear nothing of it. Getting the wood was another problem. All the decent trees have Tree Preservation Orders on them and we live in a Site of Special Scientific Interest, which was set up in order to protect the spotted owl. I couldn't convince the environmentalists that I needed the wood to save the owls – no go! When I started gathering the animals the RSPCA sued me. They insisted that I was confining wild animals against their will. They argued that accommodation was too restrictive, and it was inhumane to put so many animals in a confined space. Then the County Council, the Environmental Agency, and the Rivers Authority ruled that I couldn't build the Ark until they'd conducted an environmental impact study on your proposed flood. I'm still trying to resolve a complaint from the Equal Opportunities Commission on how many BME I'm supposed to hire for my building team. The trades unions say I can't use my sons; they insist I have to hire only CSCS-accredited workers with Ark-building experience. To make matters worse, Customs and Excise claim I'm trying to leave the country illegally with endangered species and seized all my assets! So forgive me, Lord, but it would take at least 10 years for me to finish this Ark.'

Suddenly the skies cleared, the sun began to shine and a rainbow stretched across the sky. Noah looked up in wonder and asked 'you mean you're not going to destroy the world?' 'No' said the Lord 'the Government beat me to it'.

Recycling - a Load of Rubbish ?

Peter Floyd



A lively group, including some new faces, met at Sheepcombe in January for this topical debate. Mike Wright introduced the debate and gave us some astonishing headlines: for example a third of food in the UK is thrown away! We should buy less and use what we have with more care – but this means less economic growth which is politically unpopular.

But we do feel good about recycling which is therefore politically supported, for three main reasons :

First, that we are going to run out of raw materials.

Untrue. The earth has huge quantities of raw materials. Only oil/gas is problematical.

Second, that we are running out of holes to put waste in. Only partly true since we are always digging more – but they are not always politically or physically convenient.

Third, that converting raw materials into products consumes huge amounts of energy which in turn produces pollution and climate change. This is true and we should try to use less.

So what do we do?

To encourage waste reduction rather than recycling we should :

Buy goods for their whole life cycle cost, including their disposal at the end.

For example: do you buy disposable nappies which are dumped, or reusable nappies which cost a great deal of energy to clean ?

Reuse articles time after time.

For example: do you use a plastic bag and then throw it away or a bag that can be reused ?

Cut down on use of domestic energy.

For example : shower instead of bathing.

Buy more energy efficient domestic appliances.

A good discussion followed, but as usual with this subject, the ideas may be clear, but the examples soon become confused as between raw materials, production (and destruction), sales, costs, people and politics. All that might be concluded is that everyone should be more concerned about our use of the world's resources and power, particularly in the developed west where we are using far more than our fair share.

Bargain Hunting the Lazy Way

Jackie Cavanagh

There's a new fashion in the world of consumerism and retail therapy. It's known as bargain hunting **the lazy way!** But saving money can feel like a time guzzling, tiring business, so here are some tips to get you started on that lovely lazy road of saving money.

Did you know that one third of all food bought in the UK is thrown away? A clear waste of money, especially with food prices on the increase. For tasty recipes on how to eat the same but throw away less, then log on to lovefoodhatewaste.com This site gives you information on how to use leftover food in recipes and also gives advice on portion sizes. For instance, half a mug of dry rice is sufficient for 2 adults.

Are you “de-cluttering” your home or are you bucking the minimalism phase and craving knick-knacks? Either way if you have stuff that you can't shift on Ebay or the Charity shops, or you want stuff for free, then log on to freecycle.org This is a non-profit organisation who “change the world one gift at a time”. To register with them is free and the site is split geographically into areas so that you are not collecting or depositing stuff miles away from your home. Money doesn't exchange hands but you can shift your gear to some one who needs it more than you do and equally as a registered member you can pick up stuff that you do need for free.

If you are serious about purchasing things by spending as little as possible and with a little effort as possible then log on to moneysavingexpert.com This is a free site that is run by a journalist called Martin Lewis who boasts that a typical family can save up to £6000 per year by altering where they spend rather than altering their lifestyle. This website takes the legwork out of finding where we the consumer can find fabulous bargains on things from bank charges to fuel prices to gym memberships. This site also gives other top money saving hints but you can do as much or as little “not spending” as you want, but it is certainly worth a look as all the information that you need is in the one place.

And finally if even all that is too much bother then here are some very basic top saving tips that even the laziest of us can try.

- ❑ Use white vinegar instead of proprietary kitchen cleaners for worktops and sinks
- ❑ Use half a dishwasher tablet instead of a whole one in the dishwasher
- ❑ Use cheap cola instead of toilet bleach for the toilet.
- ❑ Use a solution of one part clear vinegar to ten parts water to soak out Perspiration Stains
- ❑ Use environmentally friendly “eco balls” rather than washing powder
- ❑ Don't leave appliances such as TV's or stereos on standby.
- ❑ If you have a car adaptor, use the car if you are going out to charge your mobile phone

- ❑ Don't leave phones, media players or games on charge longer than necessary

If you have any simple money saving tips like these that you have tried, then email or send them to Meeting Point on meetingpointeditor@gmail.com.

Oveston Parish Council News

January and February sometimes bring a bitter harvest to us all. Leaden skies, bullying winds and the seemingly never ending rattle of raindrops. Oh, for some sunshine! As you will know, our roads have collected thousands of gallons of water recently from the deluge and already the evidence of its destructive power is before us. You will, hopefully, be reassured that your Parish Council is assessing the worst hit areas and is negotiating with South Gloucestershire Council over potential priority repairs.

The footpaths, too, have taken a battering and we must use them carefully to avoid difficulties. While South Glos have admitted that, in the recent past, their care of open spaces and road side areas have not been ideal, they have promised to improve this service. You will have noticed that some footpaths, like the one beside Fernhill, have already been cleared.

Whether it's crazy commuters, rushing reps, speedy students or hairy hoorah-Henries, speed on our local roads is a matter that some of you, as well as the Parish Councillors, are becoming increasingly concerned about. We, with Matthew Riddle, our District Councillor, and our local policeman, PC Roger Hopes, are considering ways of dealing with the problem but if you have any new ideas to help or observations to make please get in touch.

Setting up a Parish Council website is still in process, under the watchful eye of Jane Turley-Green. We hope this will eventually offer a useful source of information to all who wish to use it.

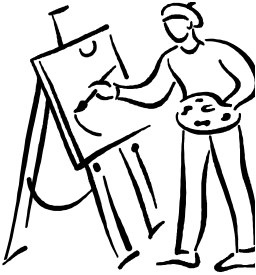
Investigations are continuing, too, into the possibility of affordable housing on three potential sites in the Parish, though things are still at an early stage here.

We thought we should give you advance notice of our Annual Parish Assembly, which will take place this year at the Queen Alexandra Memorial Pavilion, Old Down, at 7.30 p.m. on Tuesday 29th April. Everyone is welcome to this report on the important issues we have addressed in the past year and it will be accompanied by a guest speaker whose details will be published in the next issue of Meeting Point.

Any queries about any of our areas of responsibility can be made direct to a Parish Councillor or to the clerk to the Parish Council, Mrs Valerie Tutin, telephone 01454 613730 or e-mail at Ovestonnpc@googlemail.com

Painting – a Personal View

Mary Wilkins



I started painting about 15 years ago, in my mid-fifties – and rapidly became an addict! One of the lovely things about painting is that it helps you to become more observant. You start to look at things differently, noticing for instance, what colour things really are, rather than what colour you think they ought to be. I find myself constantly screwing up my eyes (it must look most peculiar!), as that is a good way of seeing tones, lights and darks, and it simplifies the scene. Another trick is making one's hands into a roughly picture-shaped form, in order to see what could be contained in a picture. In this way I have imagined many thousand more pictures than have actually come to birth.

People often say, "Oh painting, how lovely, it must be so relaxing!". Actually that is far from the truth, as it requires great focus and concentration. It is true, however, that when you are painting it is completely absorbing and there is no room for other thoughts and worries.

I started my painting career using pastels, and this has remained my favourite medium and my "comfort zone". I played around on my own for a while and then I went for a series of day courses with Jane Lampard at Wick for a couple of years. From her I learned a lot of the basic techniques, both of using pastels and also of making a picture. Since then I try to go on courses each year with different tutors, as from each one learns something new.

My favourite subjects are landscapes and seascapes and I also enjoy painting flowers, particularly growing in my own and other peoples' gardens. My work is mostly figurative – more or less realistic, though I do sometimes branch out into more abstract expression.

I've also experimented with painting in oils, acrylics and mixed media. The latter usually involves an acrylic underpainting, with pastels on top. This approach is great fun and can produce some quite surprising results! Some of them end up in the bin, but not all. Many people try watercolour first, which I think is the most challenging medium of all, because once it has gone wrong, there is not a lot you can do!

There are a large number of very good artists living in this area, both amateur and professional. Most of us belong to one or two of the local art clubs. These are great for demonstrations, painting days with various tutors and local exhibitions.

In the last two years a number of us have taken part in the Severn Vale Open Studios Arts Trail. In conjunction with the Thornbury Arts Festival, this takes place in late April and early May. We open up our homes and studios to visitors, who

can come and look at our work, have a cup of tea or coffee and a chat, and perhaps buy something which takes their fancy. Some people – the real enthusiasts – attempt to visit all the venues from Almondsbury to Berkeley! Some just visit two or three.

The dates for this year's trail are Saturday May 3rd until Saturday May 17th inclusive. There will be a brochure published with directions to all the venues, and dates and times that each one will be open. This comes out with the Thornbury Festival booklet, and will be available freely around Thornbury – in the library for instance. Participating artists will also have plenty to distribute.

The week before the trail, from Thursday 24th to Wednesday 30th April, there will be a "taster" exhibition in Thornbury Town Hall. One or two pieces by each of the participating artists will be on show there. The variety of work is huge: paintings, sculpture, pottery and other craft items, so do pop in and have a look, and then decide which artists' work you wish to see more of.

Finally, people often say "Oh painting, I'd love to, but I couldn't possibly!" The answer is, "you never know until you try, and you might surprise yourself." I did!

Music in the Church at Aust

Horse's Brawl play from their new album *Dindirin*

Horse's Brawl create haunting, strange but extraordinarily beautiful music with just a guitar, a fiddle and some recorders and crumhorns - blending early music and folk into a unique, new style. Even Radio 3 announcers get excited about it! "Dindirin", the song of the nightingale passing messages between two lovers, sets the stage for English, Spanish and Italian music from the 12th to the 19th century.

Horse's Brawl and *Dindirin* never get boring, and they kick off the new season at Aust church on Saturday 22nd March at 8pm. Tickets are available from Peter or Gina Dobbins on 01454 632306 or directly from the Boar's Head, Aust, or Olveston Stores.

Women's World Day of Prayer

Friday March 7th

This will be at 7.30 p.m. at **St. Peter's, Pilning** where the preacher will be the Rev Ann Parker. (In the February Meeting Point, the notice said that the service was at Aust – in fact there is no service at Aust that evening.)

There is also a service from 10.15 – 11.15 am at Tockington Methodist Church, where the speaker will be Janet McBride.

Winter in the Garden

Isobel Anderson



Our weather pattern up to the end of November last year was remarkably normal. Since then, it has been wet, cold and miserable with no let up, even now, in early February.

Our garden has loved it. I have never known it look so green, colourful and peaceful. The Phormium stands out with its large yellow leaves, edged with green, blowing in the gale force winds. The Choisya looks as though it will have flowers at any moment and the Pittisporum Tom Thumb, is a deep purple. Usually this time of the year it looks somewhat unhappy, waiting for the Spring and sun to arrive. Hebes, Buxus, Sempervirens, Lavandulas and Senecios have no damage from the inclement weather and the large grasses give the garden some interest with different shades of brown and fawn. The Contorted Hazel is a lovely shrub, well worth growing in a pot with cyclamen or polyanthus. In the summer it can be hidden in a corner out of the way, as the leaves look somewhat sick. Melianthus Major is another beautiful shrub with glaucous blue leaves. Ours has never had a flower and, in fact, should not have any growth in the winter, but this year it has remained green until now and goes well in a pot with winter heathers which are an excellent standby for most areas of the garden.

For the first time, I left some of my succulents outside in winter. It was a very unwise decision. I am not sure how many will have survived but what a great excuse to buy a few more! I definitely chose the wrong year to experiment but I feel if we gardeners don't experiment, we learn very little.

From the middle of October until the beginning of January I spend a lot of time clearing up the leaves from our trees. This job gets longer every year, so I must be getting slower, but the joy of seeing snowdrops in the middle of December, polyanthus flowering, pansies enjoying every drop of rain they receive, makes it all worthwhile. Bellis Daisies, Brompton Stocks and variegated wallflowers are flowering much too early. Do hope we don't have a dry spell!

Loads of bulbs are coming up now, some daffodils are already in flower and hyacinths are trying hard to push their flowers out of the ground. All this colour and beauty is really breathtaking but, for me, the wow factor is the Hellebores. They are a great addition to any garden with their beautiful multi-coloured flowers pushing up through the bare earth. The leaves can be cut off in the autumn, as it is possible for the plant to become diseased. I do ours in December, and then, in the middle of the darkest month of the year, comes this beautiful flower right through the bare soil to open into a nodding plant of such beauty. Everybody should have one because, after flowering, the leaves stay green until the end of the year when the cycle begins again.

Happy Gardening



Olveston School News

Drama Workshops on in-service day.

Written by Robynne—Year 6

On Monday the 28th January 2008, some children came to school to show some teachers from different schools how to use digital blue. Little did we know they would be asked to act and dance in front of the teachers too!

Firstly, Mr. Bonney took us to the new school hall and sat us down. Soon after, the teachers came pouring in. Secondly, we all got into partners and moulded each other into statues that we would be likely to see at a museum. Next, we had to dance crazily to weird music, when we got tapped on the shoulder, with our eyes closed. Mr. Bonney tapped Tom Cogram on the shoulder, and told the rest of us to open our eyes. Tom was the only one dancing! Ha-ha! The point was to make a complete fool of ourselves but more importantly, to build our confidence. Finally, to finish we had to say the alphabet, in a way that expressed the emotion that Mr. Bonney told us. Although unexpected, it was a lot of fun, and the teachers thought it was brilliant!

More Inset Day Antics

Written by Tom C and Dominic W—Year 5

On Monday the 28th of January, 16 teachers from St Helens, Severn Beach and Almondsbury came to see two workshops about what we did in school. This report is about the second workshop which was the digital blue cameras.

At the start we watched a PowerPoint presentation made by Robynne on using them, followed by a short animation by Thomas Cornes called 'The adventures of zig and zag'. Then Miss Bertham gave out step by step guides to animation and video recording using the digital blues. We found a camera and some teachers, then Miss Bertham gave each group some clay to make models with. When the groups had made their models, they used the stop motion on the digital blue program to make little movies. Afterwards we used the editing feature to do special effects (eg aliens, explosions and bugs) Then we saved them and went home.

Situation Vacant

Olveston School is currently looking for a cleaner to work for two hours a day. If you are interested in this position, please contact the School Office on 01454 613299.

Thank you

Anne Wike

As it has been impossible to respond personally to the hundreds of letters and cards they received, the family of Peter Wike would like to send their heartfelt thanks to all those who wrote to express condolences after his death last August. The family were very moved by the support from all members of the village, church and school. However, they want to send a special thanks to Faye Bertham and all the staff and pupils of Olveston, who have celebrated Peter's professional life with such warmth and kindness. Reverend Philip Rowe and June Robbins must also receive a mention for their sensitivity and the support they have given. Peter was very happy at Olveston School and he was passionate about all the projects he became involved with during his time there. The family knew of the great pride he had for his pupils and his staff and they wish everyone a successful and happy future.

The Wike Family



Way Forward Meeting

Kath Burgess

St Peters Hospice Severnside Support Group would like to invite you to an informal evening on Thursday March 13th at Thornbury Baptist Church at 7.30pm. We would welcome the opportunity to chat with you about our

fundraising events and also would be delighted if you would like to join us as a volunteer to help with our fundraising. We feel the "Way Forward" is to encourage more people to find out how we put the Fun in Fund raising and also hear from you of any ideas you may have for charity events for St Peters.

Please do join us for a cup of tea and a chat.

Recital of Songs and Arias

We are having this Recital at St Mary's on April 5th at 7.30pm

featuring Gill Olewicz

accompanied by David Shaw and Olwen Wonnacott

in aid of St Peter's Hospice and the Church

Tickets £5

Field with a View

Pat Poole



We were lucky enough to buy the field at the top of the hill on Vicarage Lane. Our friends greeted the news of our purchase with 'how wonderful!' or 'WHY?'

I was born on a farm and my husband on a smallholding. We live in a very ordinary semi-detached house, in Alveston and wanted space, sky and views and a pre retirement project. This is a very special field, with wonderful views, sunsets, buzzards soaring on the thermals and 85 different species of wild flowers in 2007.

Everyone has an opinion of what we should do with the field.....

Good idea to plant the steep bit by the road with trees

Don't plant trees there, you will block the view

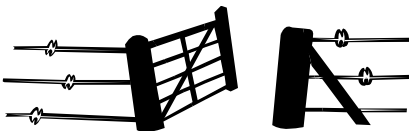
Please could you cut down the coppice growing in the old quarry as it blocks the view (No)

Why are you cutting the roadside hedge down?

Good that you have cut the roadside hedge down, you have improved the view. The hedge had to be laid as there were 9 dead elm trees that were in danger of falling into the road. We have planted 400 British native species trees along the roadside boundary.

My son did a Rural Resource Management degree and his research project was whether one should stake and put tree guards on new trees or not? The conclusion was it made little difference to survival. The Muntjac deer only nibbled some lower shoots, but the cellulose plant labels were well chewed.

We are slowly working towards the field being stock proof, when we hope to let it out, until we retire and have our own stock.



I am glad so many people are asking about our plans, and keeping an eye on our progress. It did not stop the gates being taken off their hinges twice, and someone stealing a set of hinges just

before Christmas, but it did result in someone reporting me to the police, when I was putting carpet squares over the fence, that were going to be used as weed suppressant, around the trees!

Midsummer Ball

(Apologies for the spelling of St Swithun (see below). The file got corrupted in transferring the original to the Meeting Point file and the errors were missed. Ed)

St Swithun was rarely called St Swathe or St Within, as recorded in last month's issue of Meeting Point, but St Mary's are putting the record straight by having a Midsummer Ball in his honour just so that people get his name right! It's on Tuesday July 15th, St Swithun's Day, in the marquee at Tockington Manor, by kind permission of Richard and Jane Tovey, beginning at 6.30pm. Tickets are an outrageous £60 but you get a fiver off if you book by April 1st - and tickets are selling fast. We can only accommodate 150 so it's first come, first served. Tickets may be available from Tony Bryan on 01454 616400 or a.g.bryan@btinternet.com. General enquiries to Roly Bain on 01454 616593 or roly@rolybain.co.uk



Olveston Pre-School Quiz and Curry Evening

Claire Gilronan

This is the next event to be held in aid of Olveston Pre School.

The date is **Friday 14th March**. The place is **Old Down Cricket and Social Club**
Teams of 4 at £5 each.

For more information or to purchase tickets contact Natasha Harrod on 01454 613642 or email natashaharrod@hotmail.com.

Village of the Year competition

Valerie Tutin

The Parish Council is pleased to confirm that Old Down, Olveston and Tockington will all be entering this competition (formerly the Best Kept Village Competition) this year. We are very grateful to Geoff Chappell (telephone 615806) who has agreed to coordinate the effort for Olveston, Dick Harrop (tel 416927), who has taken over as coordinator for Old Down and Keith Lazell (Tel 612845) who is again coordinating the Tockington entry. We are sure that everyone will help by keeping their own areas tidy and free of litter, but if you are interested in helping further, perhaps you will contact the above coordinators. We would again like to thank the outgoing coordinators, Tony Brown and Rod Williams, for all their hard work.

Stepping Stones is here to stay.

Gill Powell



Imagine my surprise, as leader of Stepping Stones to be told of a rumour that our preschool was closing.

However the rumour started, we would like to point out that there is nothing further from the truth. Admittedly next year, due to the low birth rate in South Glos, our numbers are lower than normal, but

this will just mean that your child will learn in a calm, quiet environment with a lot of individual attention. We feel this will only enhance your child's experience of Stepping Stones, especially for 2 ½ year olds who are leaving their parents for the first time. If you would like to see for yourself how we run, you're welcome to call in any time or come to our **Open Morning on Wednesday 19th March 9.30 – 11.30am at the Methodist church hall, Olveston.**

For more details please phone Gill on 01454 632828 or visit our website www.steppingstonesolveston.co.uk

Daldry Gardens Whist Drive

Frances Coleman

A whist drive takes place every Thursday evening in the Daldry Gardens Community Lounge at 7.30pm. This has been accidentally omitted from the Diary recently, hence this notice. Our numbers are somewhat reduced at present and anyone who hasn't been before but would like to take part in a friendly game of whist would be most welcome.

There is also an Open Coffee Morning on the first Tuesday of every month at 10.30am. Everyone welcome.

The Parish Players will present

My Fair Lady

at the Parish Hall, Tockington, Tuesday 4th - Saturday 8th March, 7.30 pm

**Box Office at Olveston Stores,
Saturday 1st March, 10 am -12 noon**

or telephone 612850. Tickets: adults £8, children £5

Police Report

Roger Hopes



The police priorities from the last two SSCG meetings are :

1. Speeding vehicles on the B4461 Elberton and HGVs exceeding the weight limit.
2. Speeding vehicles in Rockhampton.

At the start of the month, two vehicles were burnt out in Moor Lane, Tockington. One of these was earlier stolen from Yate.

At the end of the month, a reported stolen vehicle from Lockleaze, Bristol was attempted to be set on fire in Main Road, Aust. Hopefully this is not the start of a worrying trend for the Severn beat.

During the month of January, there were 10 reported crimes. Over the weekend of the 19th January, two premises were broken into in Aust. Both premises were entered through the rear after forcing windows open and numerous items of property were taken.

Over a period of perhaps a week, a trailer was stolen from outside a bungalow in Daldry Gardens, Olveston. Overnight on the 14th January, two vehicles were broken into, one in Aust and one in Tockington. A CD player and paperwork were taken from one vehicle and a car manual from the other. Registration plates were stolen from a vehicle in Aust on 24th January.

On 10th January, two vehicles were damaged in Passage Road, Aust. It would appear an attempt was made to remove the fuel cap on one and a window was smashed on the other.

Travel Lodge at Severn View Services reported damage to a window at the rear of the premises and a drive-off offence occurred from the petrol station.

Moving onto other things, residents from Oldbury-on-Severn have complained about vehicles parking on the pavement especially around Camp Road, causing people to walk into the road on dark nights. Residents and the Parish Council have asked for our assistance in enforcing the obstruction laws.

Because of an increase in crime and anti-social behaviour, we were able to issue notices to leave the car park of the Travel Lodge to Travellers who had camped there for some weeks.

Olveston Parish Countryside Group

will hold their AGM on Friday 28th March in the Olveston Methodist Hall at 7.30pm.

Jane Bain will be giving a talk on 'Living Sculptures'. Everyone is welcome.

From the Registers

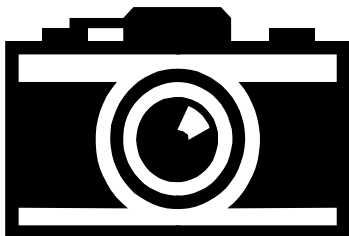
On 17th January 2008 at St John the Evangelist, Elberton, Funeral Service and Burial of Tom Hucker.

On 21st January 2008 Funeral Service and Cremation at Canford Crematorium of Betty Chalton, resident of Daldry Gardens

On 22nd January 2008 Burial of ashes in St Mary's Churchyard of Cyril Barry.

Photos of Olveston & Aust Parishes

Trevor Cook



As you may have read in last month's editorial, steps are being taken to create an Olveston & Aust website and we wish to incorporate a combination of line drawings and colour photos as part of our 'Home Page' to illustrate the beautiful area in which we live.

We would appreciate readers lending us any photographs and/or drawings which they consider would help us in creating a montage of buildings and landscapes and, at the same time, give us their permission to publish their pictures on the web. Once scanned, the material will be returned promptly to their owners.

If you feel that you have material which would help us in this endeavour, please contact Trevor Cook at Horton Lodge, Haw Lane, Olveston BS35 4EG phone 618442.

Old Down Cricket Club

150 Club Winners February:

£50 John Welsher

£15 Bill Finch

£ 5 Simon Panes

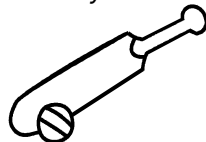
Latest £25 Bonus Ball Winners:

12th January Tony Gardner

19th January Dave Gardner

2nd February Ian Maunder

Tony Gardner



Tony Gardner 07889 727729 www.olddowncricketclub.co.uk



Weather-January 2008 *Marcus Bean*

ITEM	DATE RECORDED	ACTUAL READINGS 2008	ACTUAL READINGS 2007	LONG TERM AVERAGE
Max Temp °C	20 th	12.7	14.2	14.0
Min Temp °C	12 th	Minus 0.1	Minus 1.6	Minus 3.4
Max Press. mbars	25 th	1034	1032	1038
Min Press. mbars	15 th	974	986	985
Max Wind speed mph	31 st	47	57	52
Days with Gales(35kts +)	7 th ,8,9,10,13,14,15,18,19,22, & 31 st	11	11	6
Max Day Rainfall mm	15 th	20.10	32.13	18.80
Rainfall in Month mm	—	153.82	133.89	81.51

Summary

The first four days of January were overcast and reasonably benign but, on the 5th, the first of many Atlantic low pressure systems tracked to the North of Scotland and swung their troughs over us, bringing almost continuous very heavy rain and gale force winds. Many areas of the country experienced floods as the ground had become totally saturated. Admixed with the rain on the 11th, we had some sleet but temperatures were generally unusually warm. On the 23rd, high pressure started to build from the South, pushing the Atlantic troughs further North and bringing a drier spell to this area. This continued until the 30th, when the high pressure retreated Westwards, allowing an intense low pressure system close enough to bring gale force wind and heavy rain on the last day of the month.

January 1948 was the wettest since records began in 1766 and this January, with its rainfall being nearly twice the average – just beating the recent record of 1999, is among the ten wettest on record. As a result of the large number of low pressure systems, the average pressure was significantly below norm. Temperatures were above average, with only one air frost and fourteen ground frosts recorded.

Thornbury Library

Healthy living during the month of May

We hope to hold a series of displays, exhibitions, demonstrations etc. on the theme of health and healthy living during May. If you belong to a dance group, a power walking group or a hard of hearing support group etc. and would like to promote your group to a wider audience, please get in touch on 01454 868006.



Children's Easter holiday activities

These will be held in April during the school holidays. Please look out for details in the library or ring 01454 868006.

Thornbury Gazette on microfilm

2007 is now available on microfilm. In fact our microfilm copies go back to 1955 but the further back we go the more gaps we have. If you want to consult back copies, please contact us first so that we can

confirm we have the dates you require and can set up the micro-film reader. Please note it is rather old and does not print.

The Restoration of Kew Palace

Linda Hall

Dr Lee Prosser of Historic Royal Palaces is coming to Almondsbury to talk about the recent restoration of Kew Palace. This amazing house was built in 1631 by a wealthy merchant and later became a royal residence where poor George III was kept during his "mad" periods. The house has revealed many fascinating features during the 10-year programme of restoration work and has been refurbished as it was at the beginning of the 19th century. One of the most exciting finds was a fragment of painted balustrade showing what the original 1631 stair would have looked like and how it was altered before being replaced in 1734.

The talk has been arranged by the Friends of Winterbourne Medieval Barn as the first of a series of varied events for this year. The barn is one of a small number of large barns and remains one of the least well known. It has been dated by tree-ring dating to 1342 and was built by the lord of the manor; it has a splendid raised-cruck roof which is tremendously impressive. The barn itself will be open later in the year. The talk will be on Thursday 13th March at 7.30. at the Old School Hall - details from Linda Hall, **01633 889019**, or email hall.email@virgin.

Yours Faithfully

Ann Roberts

As I sit down to write this article, a young French bank trader has just been arrested for losing enormous sums of the bank's money, in what appears to be a frenzied addiction to betting on the world's money markets. Far too often we read of lives ruined by addictions as people seek to satisfy their inner desires and, consequently, my eye was drawn to an article in the 'Alpha News ' which arrived with the post recently.

Most of you will have heard of the Alpha course by now – if only from seeing adverts on the back of Bristol buses as you queue to get to work – and some of you will have been to one of the courses in the local Churches. However, you may be one of those who are still wondering what it's all about and why so many people, by now many thousands worldwide, join such a course. I suppose they're looking for an answer to those eternal questions " What is the purpose of life? " or " Is there really no more to it than living and dying? " but the young man's story in my Alpha News provided a heartening insight into how a real desire to find an answer can change lives.

To the outside world, Darren and his wife, Sarah, had everything: a big house, an expensive car and a thriving business. However, he became addicted to gambling and his family were firmly in third place behind the business and his addiction. Sarah was so unhappy she ate for comfort, her weight shot from eight to sixteen stone and eventually she stayed in bed for 18 months, afraid to leave her own house. Fortunately for them, one of the neighbours took the children to and from school and she also invited Sarah to an Alpha Course. At first, Sarah would not entertain the idea but eventually she felt so indebted to her neighbour that she accepted the invitation.

The rest of the story is one of those which lifts you on a rainy January day and makes you wonder why more people don't accept Jesus' invitation: " Seek and you will find" (Matthew 7 v 7). Sarah found that faith in God held the answer to her fear and emptiness. A few months later Darren agreed to join an Alpha Course, too, and he was able to find an experience and faith which enabled him to put his gambling behind him.

Not everyone who joins a course may have such a transformational time but if you receive an invitation in the future or see one of the adverts, maybe you won't dismiss it without considering whether there are questions in your heart which could be answered by Christianity. I hope you will give it some thought.

Church News: ST MARY THE VIRGIN, OLVESTON

March 2nd Mothering Sunday	8am	Holy Communion	Rev. Philip Rowe
	10am	Family Service	Rev. Philip Rowe
	10am	Breakfast Club	Breakfast Club Team
	6pm	Evensong - Choir	Rev. David Bone
March 9th Lent 5	8am	Holy Communion (BCP)	Canon David Sansum
	10am	Morning Worship - Choir	Canon John Poarch
	10am	Breakfast Club	Breakfast Club Team
	6pm	Methodist Anniversary	Tockington
March 16th Palm Sunday	8am	Holy Communion	PR/ Rev. Bone
	10am	Holy Communion	Rev. Rowe/Rev. Bain
	10am	Breakfast Club	Breakfast Club Team
	6pm	Vespers with Choir	Rev. David Bone
March 18th	7.30pm	Holy Communion	Rev. Philip Rowe
March 20th Maundy Thursday	7.30pm	Agapé	Rev. Fooks /Rev. Bain
March 21st Good Friday	2pm	Last Hour	Rev. Rowe/Rev. Bain
March 23rd Easter Day	6.30am	Dawn Eucharist (Vicar.Hill)	Rev. Roly Bain
	8am	Holy Communion (BCP)	Canon David Sansum
	10am	Holy Communion - Choir	Rev. Rowe/Rev. Bain
	6pm	Evensong (BCP)	
March 30th Easter 2	8am	Holy Communion	Canon David Sansum
	10am	Morning Prayer	Rev. David Bone
	10am	Breakfast Club	Breakfast Club Team
	6pm	Holy Communion (BCP) Choir	Rev. David Bone

Information on services correct at time of going to press.

CONTACT PERSONS:

The Rev Philip Rowe, (01454 613223); email: office@stmaryssevernside.org

Please contact Philip about Baptisms, marriages, funerals or other matters at any time, but please try to avoid Thursdays except in an emergency.

Mrs. June Robbins, Verger 01454 617491

Internet: www.stmarysolveston.org.uk/index.html

PRAYER GROUP: Mondays, 3.00pm in the Church (except third Monday)

WEDNESDAY HOLY COMMUNION: At 9.00am led by the Rev. Roly Bain

CHAPELRY OF ST JOHN, AUST

March 9 th	10am	Holy Communion	Rev David Bone
March 23 rd Easter Day	8am	Holy Communion	Rev David Bone
	10am	Family Service	Rev David Bone

Assistant Curate: Rev David Bone (01454 614601)

Church Wardens: Jo Jenkins (01454) 632838 and Janet Ford

ST MARY DE MALMESBURY, LITTLETON-ON-SEVERN

March 2 nd	9am	Holy Communion	Rev. David Pole
March 16 th	9am	Matins	Mr Don Streatfield

Contact person: Rev. David Pole (01454 414810); www.sthelensalveston.org

ST JOHN THE EVANGELIST, ELBERTON

March 9 th	9am	Matins	Mr Don Streatfield
March 23 rd	9am	Holy Communion	Rev. David Pole

Contact person: Rev. David Pole (01454 414810); www.sthelensalveston.org

OLVESTON AND TOCKINGTON METHODIST CHURCH

March 2 nd	10am	St. Marys	Mothering Sunday Service at St. Marys Junior Church in the Wesley Rooms
	6 pm	BristolCathedral	Bristol District Service led by the President of the Conference, Rev. Martyn Atkins
March 9 th	10am	Olveston Ch.	All Age Worship led by Rev. Tim Harrison. The Breakfast Club will join us later in the Service.
	6 pm	Tockington Ch.	Church Anniversary Service led by Rev. Peter Mortlock.
March 16 th	10am	Tockington Ch.	Morning Worship with Holy Communion, led by Rev. Iesinga Vunipola. Junior Church in the Wesley Rooms.
	4 pm	Daldry Gardens	Worship led by Mr. Glyn Varney.
March 23 rd	8am	Tockington Green	Easter Day Communion led by Rev. Iesinga Vunipola, followed by a light Breakfast in the Church. (Service in Church if wet)
	10am	Tockington Ch.	Easter Morning Worship led by Mr. Fe'ao Vunipola.
	6pm	Olveston Ch.	Easter Day Evening Worship with Holy Communion, led by Rev. Rosemary Davies.
March 30 th	10am	Tockington Ch.	Morning Worship led by Mr. Colston Smith Junior Church in the Wesley Rooms.
	6pm	Olveston Ch.	Evening Worship led by Rev. George Nuttall.

LIGHT LUNCHESES: Thursday 6th March at 12.15pm in the Tockington Wesley Rooms. To book your lunch please ring 416056.

NORTHWICK LUNCHEON GROUP: This meets at 12.30pm on Wednesday 5th March. To book your lunch please ring 416528.

PRAYER MEETINGS: Thursdays at 2.15pm in the Olveston Vestry.

COFFEE MORNINGS: Saturdays 10.30am – 12 noon in the Olveston Methodist Hall except the 8th March when it will be held in Tockington Chapel.

DISCUSSION GROUP: A Discussion Group covering topical subjects is held on the 4th Tuesday of every month. Meetings commence with coffee 10.30am for 11.00am. This month's meeting is on the 25th March.

CONTACT: Rev. Iesinga Vunipola. 01454 412269; iesinga@hotmail.com

THE VINE, AWKLEY The Vine, Pilning Street, Awkley

We meet in a relaxed, informal manner for worship, prayer and conversational Bible studies and incorporating Communion, normally on Sundays at 10.30am and Mondays and Wednesdays at 7.30pm. As we also visit other churches and events, please check Notice Board or contact **Mike and Barbara Matthews, tel. 07840793772 or email thevine_awkley@hotmail.com**

THE OASIS CHURCH, OLDOWN

March 2nd	6.30pm	Claud Sanderford
March 9th	6.30pm	Roger Greenslade
March 16th	6.30pm	Rev. Iesinga Vanipola
March 21st	10.00am	Good Friday - Ceri Morgan - Davies
March 23rd	6.30pm	Easter Sunday - Dolophus DeChikera
March 30th	6.30pm	Julian Richards

For further information please contact **Olwen Wonnacott (412141) or Paul Ashford (07774-110814); email: Paul@CalebGroup.net**

AUST EVANGELICAL CHURCH offers a warm welcome to Family Worship at 11.00am and to Evening Worship at 6.30pm. For more details, please phone 613134 or 632564. 'Happy are the people whose God is the Lord'.

BRISTOL CHRISTIAN FELLOWSHIP IN OLVESTON - well not so much in Olveston these days as we concentrate on serving the community primarily in other areas of Bristol and Thornbury. As followers of Christ, our heart is to be where the Lord wants us to be most effective and currently we are establishing our presence in North and East Bristol, as well as continuing to work with the other local churches in Thornbury and in the heart of Bristol amongst the most needy. Our Sunday morning meetings are held at The Grange School in Warmley at 11 am, but the life of the church continues in a variety of forms, locations and styles throughout the week. Please contact the **Fellowship Office in Almondsbury on 01454613305** for more information or on the internet at **www.bcfnet.com**

RC CHURCH OF CHRIST THE KING, Thornbury - each Sunday
8.30am - Mass 11.00am - Family Mass 6.30pm – Mass

SOCIETY OF FRIENDS (QUAKERS), Thornbury - Meeting for Worship
Sundays 10.30am. The Tudor Room, The Chantry, Castle Street

Diary Dates for March 2008

The information given below is believed to be correct as we go to press.

Sat 1 st	Olveston Methodist Hall Coffee Morning	10.30-12noon	OMH
Sun 2 nd	Mothering Sunday		
Mon 3 rd			
Tue 4 th	Tockington Toddlers Open Coffee Morning Royal British Legion – Women's Section My Fair Lady- Parish Players	10 -12noon 10.30am 7.30pm 7.30pm	WR DGCL DGCL PH
Wed 5 th	Historical Society – Jennifer Bone - "The Methodist Movement in the Olveston Area" (<i>NB - at Methodist Church, Tockington</i>) My Fair Lady – Parish Players	7.30pm 7.30pm	TMC PH
Thu 6 th	Olveston School World Book Day Olveston Baby and Toddlers Group My Fair Lady – Parish Players Whist Drive	2.30 – 4.30pm 7.30pm 7.30pm	MH PH DGCL
Fri 7 th	Tockington Chapel Open Weekend 7-9 th March St Mary's Church Choir Practice My Fair Lady – Parish Players	7-8pm 7.30pm	St.M PH
Sat 8 th	Olveston Methodist Hall Coffee Morning Aust Coffee Morning, followed by Aust Village Hall AGM Craft Fayre for Jesse May Trust My Fair Lady – Parish Players	10.30-12noon 10.30am 10 – 4pm 7.30pm	OMH AVH AOSH PH
Sun 9 th			
Mon 10 th			
Tue 11 th	Tockington Toddlers WI – 'Spring Gardens'- Mrs Aitkin	10-12noon 7.30pm	WR PH
Wed 12 th	An Evening of Chamber Music Royal British Legion – Men's Section	7.30pm 7.30pm	St. M DCGL
Thu 13 th	Olveston Baby and Toddlers Whist Drive – all welcome Thornbury Flower Club- Oasis Demo. St Peter's Hospice meeting; The Way Forward Whist Drive	2.30 – 4.30pm 7.30pm 7.30pm 7.30pm 7.30pm	MH DGCL TMH TBCh DGCL
Fri 14 th	St Mary's Church Choir Practice Olveston Pre-School Quiz and Curry Evening	7- 8pm 7.30pm	St M AP
Sat 15 th	Olveston Methodist Hall Coffee Morning	10.30-12noon	OMH
Sun 16 th			
Mon 17 th			
Tue 18 th	Tockington Toddlers	10-12noon	WR
Wed 19 th	Stepping Stones Pre-School Open Morning Bosom Buddies - Call Jennie on 884177	9.30-11.30 7.30pm call for venue	MH

Thu 20th	Olveston School Inset Day Whist Drive	7.30pm	DGCL
Fri 21 st			
Sat 22 nd	Olveston Methodist Hall Coffee Morning Music in the Church at Aust - Horses Brawl and Dindirin - Peter or Gina Dobbins on 632306	10.30-12noon 8pm	OMH Aust Church
Sun 23 rd			
Mon 24 th			
Tue 25 th	Tockington Toddlers Olveston Parish Council Meeting Fibromyalgia Support Group Craft-making for Coffee Morning	10-12noon 7.30pm 7 - 9.00pm	WR AP AMH
Wed 26 th			
Thu 27 th	Olveston Baby and Toddlers Whist Drive Charity Bridge Drive	2.30 – 4.30pm 7.30pm 7.30pm	MH DGCL AOSH
Fri 28 th	OPTA Great Wine Challenge Olveston Parish Countryside Group AGM	7.30pm 7.30pm	PH MH
Sat 29 th	Olveston Methodist Hall Coffee Morning	10.30-12noon	OMH
Sun 30 th	Marlwood School: Car Boot Sale	From 9.30am	
Mon 31 st			

Key: **ACR** – Almondsbury Church Rooms; **AH** – Armstrong Hall, **AMC** – Alveston Methodist Church; **AMH**- Alveston Methodist Hall; **AOSH** – Almondsbury Old School Hall; **AP** – Alexandra Pavilion, **AVH** – Aust Village Hall; **CCCP** – Castle Court Car Park; **CH** – Cossham Hall; **Chy** – Chantry; **DGCL** – Daldry Gardens Community Lounge; **EVH** – Elberton Village Hall; **MH** – Olveston Methodist Hall; **OS** – Olveston School; **PH** – Olveston Parish Hall; **StM** – St Mary’s Church, Oliv.; **StMA** Almondsbury Church; **TBCh** - Thornbury Baptist Church; **TMC** – Tockington Methodist Church; **TMH** – Thorn. Methodist Hall; **URC** Thorn United Reform Church; **WR** – Wesley Rooms.

MEETING POINT is pleased to provide contact details for any clubs or organisations in the Parishes. Please contact our Advertising Manager whose details can be found on page one.

Advertisements are accepted on the understanding that the description of goods or services is correct and true. Every effort is made to see that the information is correct and reliable. Neither Meeting Point, its editor, nor management committee accept any responsibility or give any guarantee in case of any dispute or claim as to quality, condition or delivery of commodities or services. It is not to be taken that publication implies recommendation of any advertisement. It is always advisable to check prices when ordering goods or services. Views expressed by contributors are not necessarily those of the editor or Meeting Point magazine.

Copyright Meeting Point 2008. Copyright remains with the author(s) and Meeting Point. No part of this publication may be reproduced, stored in a retrieval system, or transmitted in any form without the prior permission of the copyright owners.